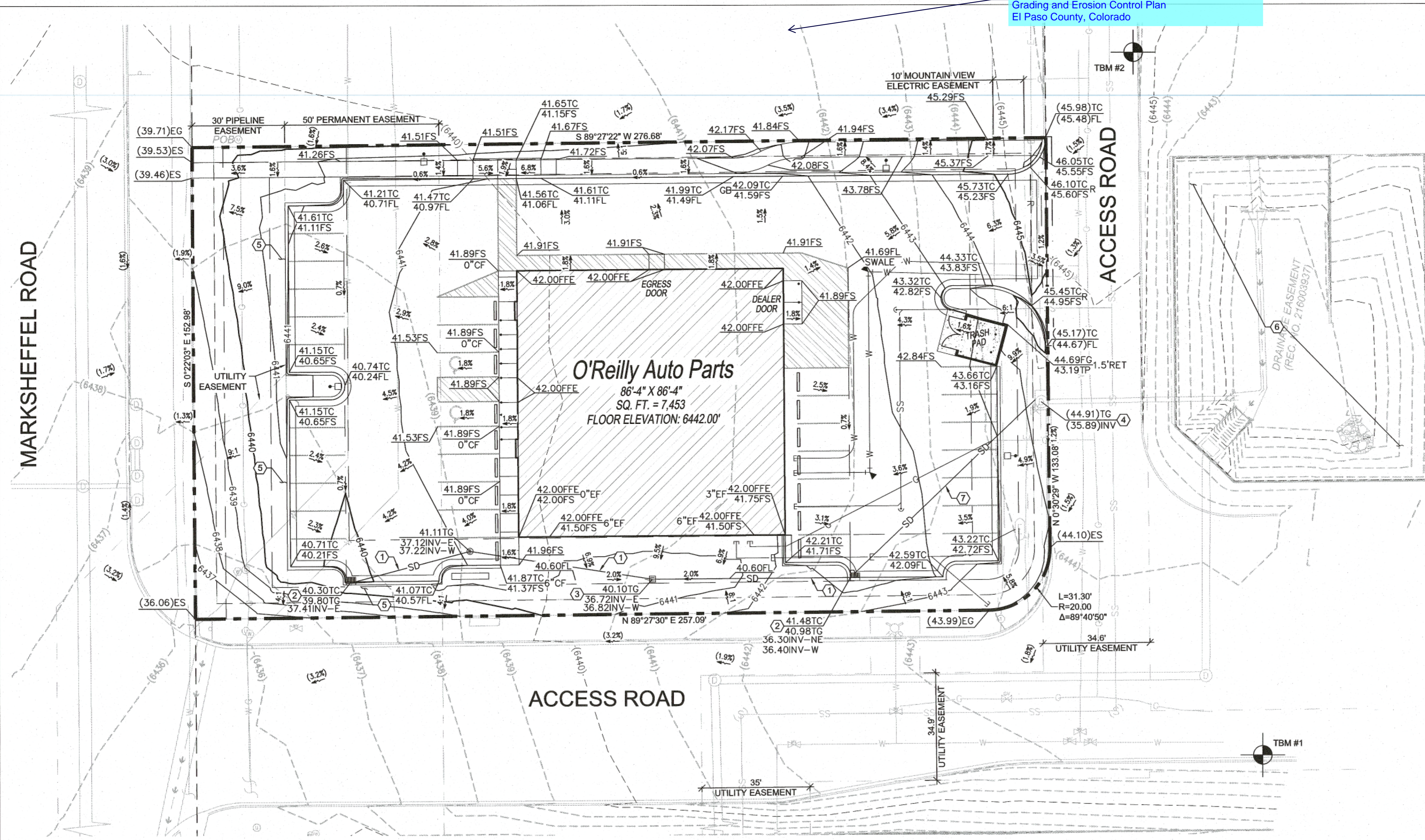
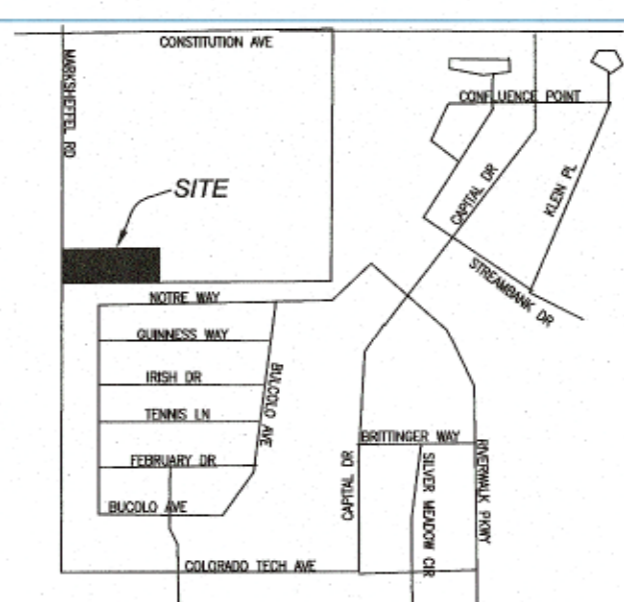


Add Title:  
O'Reilly Auto Parts Store  
Grading and Erosion Control Plan  
El Paso County, Colorado



**VICINITY MAP**



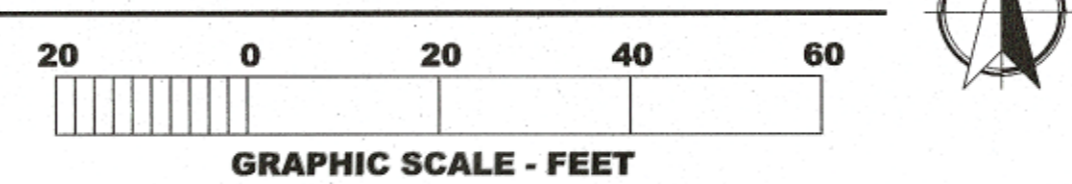
**SYMBOLS LEGEND**

- NOTE: REFER TO SURVEY FOR EXISTING CONDITIONS SYMBOLS LEGEND.
- (300.00) EXISTING ELEV.
  - 300.00 PROPOSED ELEV.
  - (4.300) EXISTING CONTOURS
  - 4300 PROPOSED CONTOURS
  - 1.5% PROPOSED FLOW ARROW
  - (1.5%) EXISTING FLOW ARROW
  - ADJACENT PROPERTY LINE/ RIGHT OF WAY
  - EASEMENT LINE
  - BUILDING/LANDSCAPE SETBACK LINE
  - PROPOSED SAWCUT
  - PROPERTY LINE/ RIGHT OF WAY
  - [Hatched Box] NEW BUILDING CONSTRUCTION
  - UNDERGROUND STORAGE FOOTPRINT
  - [Square] NEW SIGN LOCATION
  - [Square] NEW CONCRETE PARKING BLOCK
  - [Square] PROPOSED LIGHT POST
- LIST**
- BACK OF WALK
  - CURB CUT
  - CURB FACE
  - EXPOSED FOUNDATION
  - EXISTING GROUND
  - EXISTING SURFACE
  - FINISHED FLOOR ELEVATION
  - FINISHED GROUND
  - FLOW LINE
  - FINISHED SURFACE
  - HIGH POINT
  - INVERT ELEVATION
  - RETAIN
  - RIDGE
  - SIDEWALK
  - TEMPORARY BENCHMARK
  - TOP OF CURB
  - TRASH PAD
  - BW
  - CC
  - CF
  - EF
  - EG
  - ES
  - FF/FFE
  - FG
  - FL
  - FS
  - HP
  - INV
  - RET
  - R
  - SW/BW
  - TBM
  - TC
  - TP

Add Sheet index

**1 SITE GRADING PLAN**

C1.1 SCALE: 1" = 20'-0"



**GENERAL NOTES**

REFER TO PROJECT MANUAL FOR ADDITIONAL REQUIREMENTS.

SITE CONDITIONS BASED UPON SURVEY PROVIDED BY OWNER FIELD VERIFY EXISTING CONDITIONS BY DETAILED INSPECTION PRIOR TO SUBMITTING BID AND BEGINNING CONSTRUCTION. NOTIFY ENGINEER IF EXISTING CONDITIONS DEVIATE SUBSTANTIALLY FROM THOSE INDICATED HEREIN.

FIELD VERIFY SANITARY SEWER SERVICE CONNECTION INVERT PRIOR TO ESTABLISHING FINAL FINISH FLOOR ELEVATION. NOTIFY ENGINEER IF EXISTING CONDITIONS REQUIRE REVISED FINISH FLOOR ELEVATION TO PROVIDE PROPER DRAINAGE.

ACCESSIBLE PARKING AREAS TO SLOPE 2% MAXIMUM IN ALL DIRECTIONS. DESIGNATED ACCESSIBLE ROUTE TO SLOPE 5% MAXIMUM IN DIRECTION OF TRAVEL WITH 2% MAXIMUM CROSS SLOPE.

THE PROPOSED DEVELOPMENT DISTURBS LESS THAN ONE ACRE.

**ADA NOTE**

ALL ACCESSIBLE PATHS OF TRAVEL ARE TO ABIDE BY THE FOLLOWING PARAMETERS:

- CROSS-SLOPE NOT TO EXCEED 2%
- LONGITUDINAL SLOPE NOT TO EXCEED 5%
- LONGITUDINAL RAMP SLOPE NOT TO EXCEED 8.33%
- RAMP LANDINGS NOT TO EXCEED 2% (LANDING PLACEMENT PER RAMP DETAILS).
- PATHWAYS EXCEEDING THESE STANDARDS WILL BE REPLACED AT THE CONTRACTORS EXPENSE

**SITE EXCAVATION REQUIREMENTS**

- A A GEOTECHNICAL ANALYSIS HAS BEEN PERFORMED ON THIS SITE. REFER TO PROJECT MANUAL.
- B FOLLOW GEOTECHNICAL ANALYSIS RECOMMENDATIONS FOR SITE EXCAVATION REQUIREMENTS.
- C REFER TO STRUCTURAL DRAWINGS FOR BUILDING EXCAVATION REQUIREMENTS.

**BENCHMARK**

TEMPORARY BENCHMARK #1: ELEVATION = 6443.54', SET MAG NAIL, N:1377025.58, E:3233108.44.  
TEMPORARY BENCHMARK #2: ELEVATION = 6445.80', SET MAG NAIL, N:1377253.45, E:3233066.72.

VERTICAL DATUM: BASED ON OPUS SOLUTION DATED 4/30/2019, NAVD88.

GRADE FLAG ELEVATIONS SHOWN HEREON ARE TRUNCATED BY 6400 FEET.

**BASIS OF BEARING**

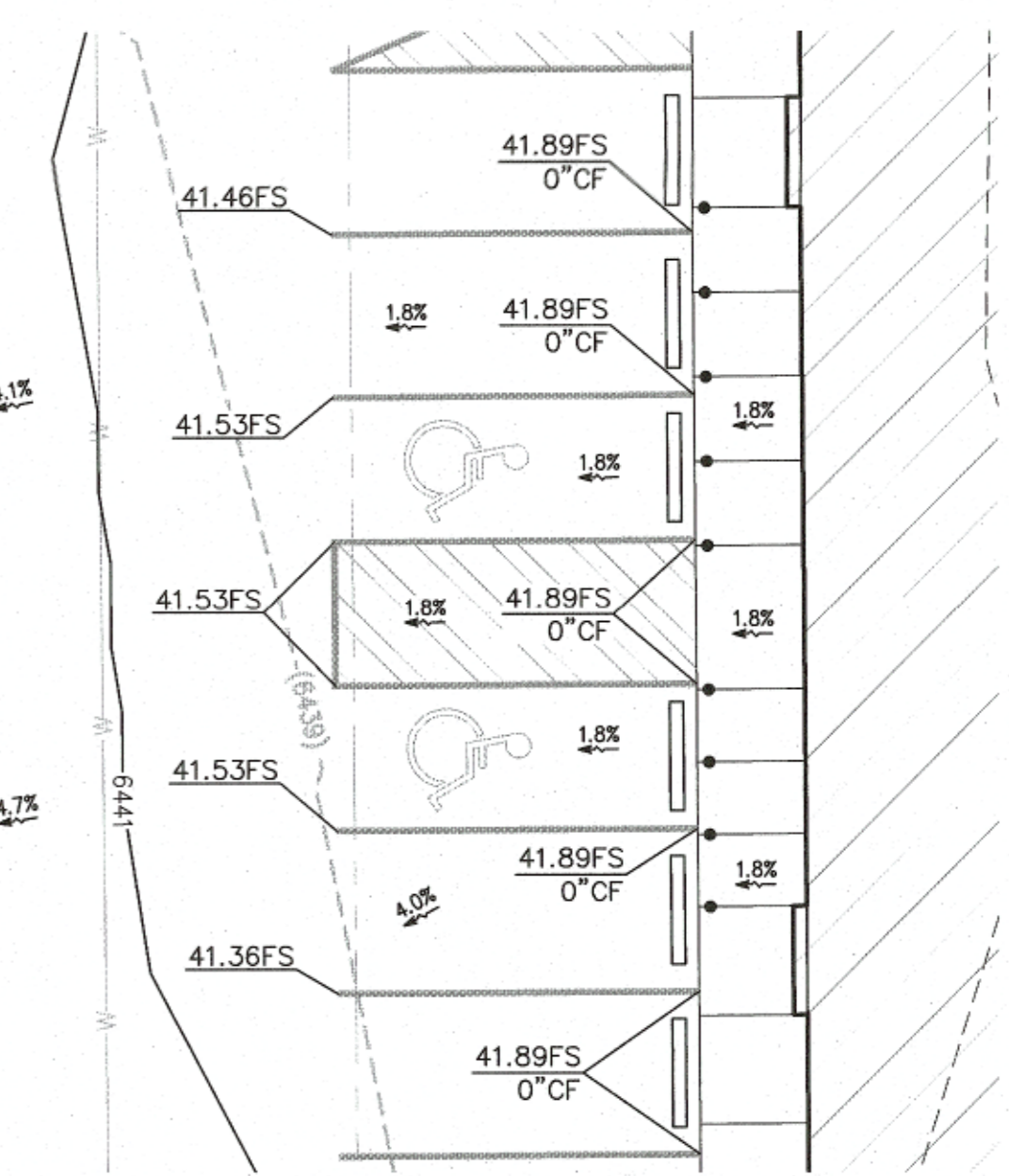
BEARINGS ARE BASED ON GRID CENTRAL FOR COLORADO COORDINATE SYSTEM, CENTRAL ZONE, NAD83. LATITUDE = 38°51'57.09193", LONGITUDE = 10°40'53.61704", CONVERGENCE ANGLE = 0°11'59".

**KEY NOTES**

- ① 12" HDPE STORM DRAIN PIPE AT 0.5% SLOPE.
- ② 24"x24" NYLOPLAST CURB INLET WITH STANDARD GRATE.
- ③ 24" AREA INLET WITH 24" NYLOPLAST DOME GRATE.
- ④ CONNECT TO EXISTING STORM DRAIN MANHOLE.
- ⑤ 2' BENCH AT 2%.
- ⑥ EXISTING WATER QUALITY AND DETENTION POND.
- ⑦ 15" HDPE STORM DRAIN PIPE AT 0.5% SLOPE.

**2 ADA PARKING DETAIL**

C1.1 SCALE: 1" = 10'-0"



Add PCD File No. PPR202

OWNER'S STATEMENT:  
THE OWNER WILL COMPLY WITH THE REQUIREMENTS OF THE GRADING AND EROSION CONTROL PLAN.

OWNER SIGNATURE \_\_\_\_\_ DATE \_\_\_\_\_

ENGINEER'S STATEMENT:  
THIS GRADING AND EROSION CONTROL PLAN WAS PREPARED UNDER MY DIRECTION AND SUPERVISION AND IS CORRECT TO THE BEST OF MY KNOWLEDGE AND BELIEF. SAID PLAN HAS BEEN PREPARED ACCORDING TO THE CRITERIA ESTABLISHED BY THE COUNTY FOR GRADING AND EROSION CONTROL PLANS. I ACCEPT RESPONSIBILITY FOR ANY LIABILITY CAUSED BY ANY NEGLIGENT ACTS, ERRORS OR OMISSIONS ON MY PART IN PREPARING THIS REPORT.

ENGINEER OF RECORD SIGNATURE \_\_\_\_\_ DATE \_\_\_\_\_

EL PASO COUNTY:  
COUNTY PLAN REVIEW IS PROVIDED ONLY FOR GENERAL CONFORMANCE WITH COUNTY DESIGN CRITERIA. THE COUNTY IS NOT RESPONSIBLE FOR THE ACCURACY AND ADEQUACY OF THE DESIGN, DIMENSIONS, AND/OR ELEVATIONS WHICH SHALL BE CONFIRMED AT THE JOB SITE. THE COUNTY THROUGH THE APPROVAL OF THIS DOCUMENT ASSUMES NO RESPONSIBILITY FOR COMPLETENESS AND/OR ACCURACY OF THIS DOCUMENT. FILED IN ACCORDANCE WITH THE REQUIREMENTS OF THE EL PASO COUNTY LAND DEVELOPMENT CODE, DRAINAGE CRITERIA, AND ENGINEERING CRITERIA MANUAL AS AMENDED.

COUNTY PROJECT ENGINEER SIGNATURE \_\_\_\_\_ DATE \_\_\_\_\_

Update signature block per the attached checklist.  
County signature block has a second paragraph.

PREPARED UNDER THE SUPERVISION OF TAIT & ASSOCIATES, INC.

6163 East County Road 16  
Loveland, CO 80537  
P: 970.613.1447 F: 970.613.1897  
www.tait.com

**TAIT**  
Since 1964

Los Angeles, Boke, Sacramento, Dallas, Rancho Cucamonga, Denver

**CRAIG A. SCHNEIDER, AIA**  
ARCHITECT

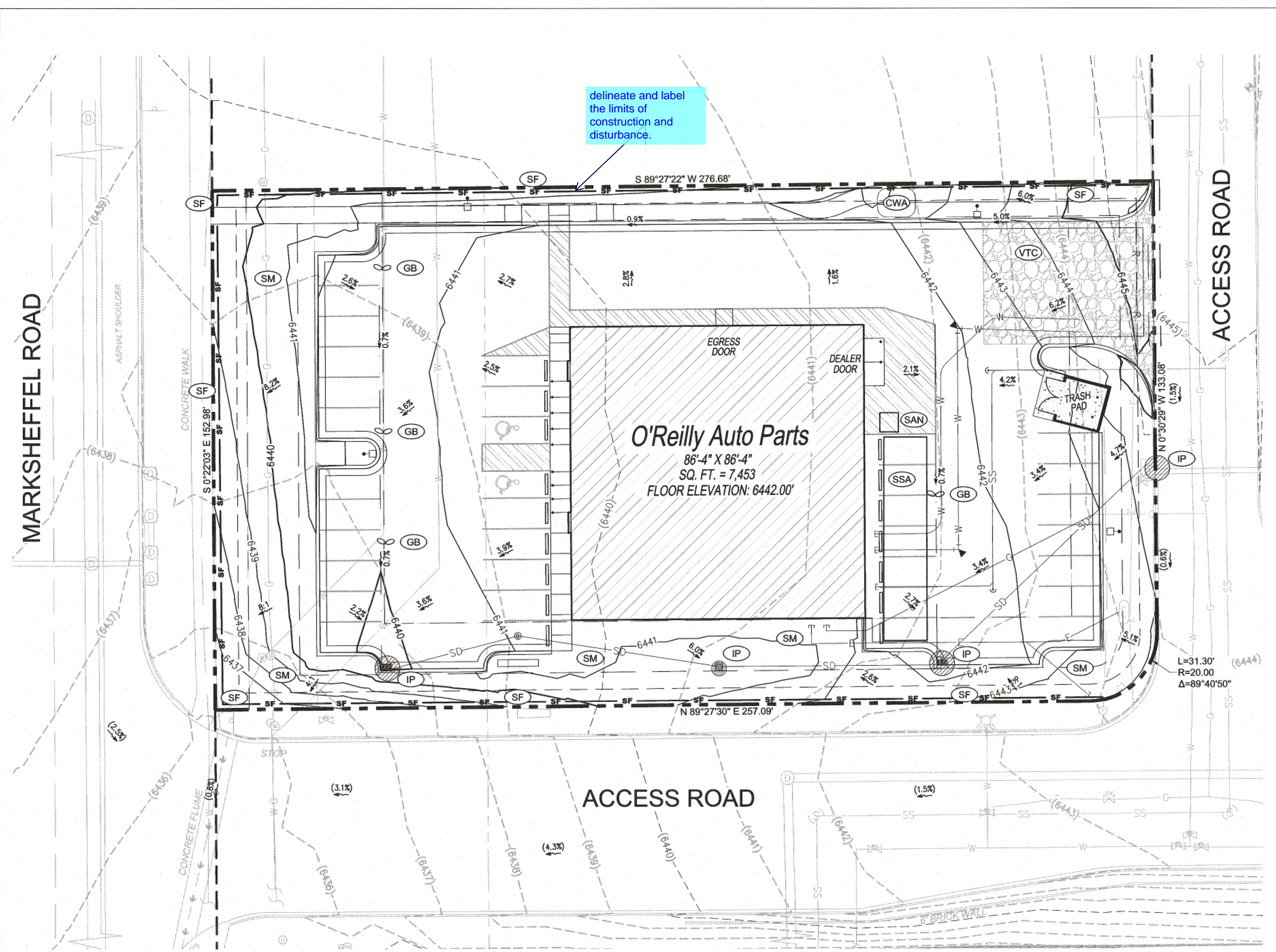
1736 East Sunshine, Suite 417  
Springfield, Missouri 65804  
e-mail: architect@eaststarchitect.com  
417.862.0558  
Fax: 417.862.3265

PROJECT:  
**NEW O'REILLY AUTO PARTS STORE**  
N. MARKSHEFFEL ROAD  
COLORADO SPRINGS, CO #11  
**SITE GRADING PLAN**

**O'Reilly AUTO PARTS**  
CORPORATE OFFICES  
233 SOUTH PATTERSON  
SPRINGFIELD, MISSOURI 65802  
(417) 862-2674 TELEPHONE

COMM #	4369
DATE:	10-11-19
REVISION	
DATE:	



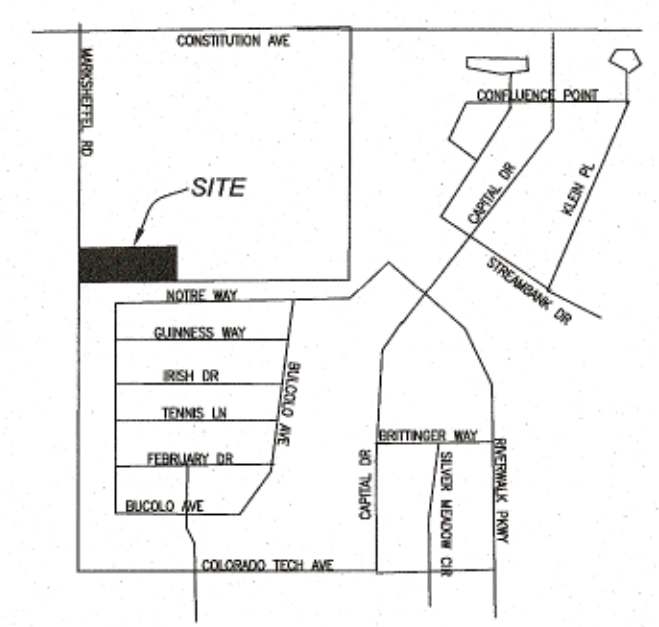


delineate and label the limits of construction and disturbance.

### GENERAL PHASING NOTES

- PHASE 1:(PRE-CONSTRUCTION)**
1. INSTALLATION OF EROSION CONTROL SILT FENCE.
  2. DEMOLITION OF EXISTING SITE IMPROVEMENTS.
    - SILT FENCE
      - PLACED IN AREAS WITH POTENTIAL TO RELEASE SEDIMENT OFFSITE.
    - VEHICLE TRACKING CONTROL
    - SANITARY FACILITIES
- PHASE 2:(DURING GRADING, AND PAVING)**
4. INSTALLATION OF ALL STORM WATER DRAINAGE IMPROVEMENTS.
  5. ROUGH GRADING.
  6. CONSTRUCTION OF NEW SITE IMPROVEMENTS.
  7. FINAL GRADING.
    - CONCRETE WASHOUT AREA
      - PRIOR TO ANY CONCRETE WORK
    - SEEDING AND MULCHING
      - STOCKPILES OVER 7-DAYS IDLE
- PHASE 3:(POST PAVING)**
8. PLACEMENT OF FINAL LANDSCAPING ITEMS AND SOD.
  9. REMOVAL OF EROSION CONTROL FENCE.
    - FINAL LANDSCAPE INSTALLATION PER LANDSCAPE PLANS
    - REMOVE REMAINING EROSION CONTROL BMP'S ONCE STABILIZED

### VICINITY MAP



### CONSTRUCTION EGRESS NOTES

1. CONSTRUCTION EGRESS SHALL BE 25' MINIMUM WIDTH AND 30' MINIMUM LENGTH AND 6" MIN THICKNESS OF STONE (1.5"-3.5") COARSE AGGREGATE WITH GEOTEXTILE UNDERLINER. REFER TO CITY OR STATE FOR ANY ADDITIONAL REQUIREMENTS.
2. THE EXIT SHALL BE MAINTAINED IN A CONDITION WHICH WILL PREVENT TRACKING OR FLOW OF MUD ONTO PUBLIC RIGHT-OF-WAY. THIS MAY REQUIRE PERIODIC TOP DRESSING WITH 1.5-3.5 INCH STONE, AS CONDITIONS DEMAND, AND REPAIR AND/OR CLEAN OUT OF ANY STRUCTURE USED TO TRAP SEDIMENT. ALL MATERIALS SPILLED, DROPPED, WASHED, OR TRACKED FROM VEHICLES OR SITE ONTO ROADWAYS OR INTO STORM DRAINS MUST BE REMOVED IMMEDIATELY.
3. WHEELS MUST BE CLEANED TO REMOVE MUD PRIOR TO ENTRANCE ONTO PUBLIC RIGHT-OF-WAY. WHEN WASHING IS REQUIRED, IT SHALL BE DONE ON AN AREA WITH CRUSHED STONE WHICH DRAINS INTO AN APPROVED SEDIMENT TRAP OR SEDIMENT BASIN LOCATED PER CITY OR STATE REQUIREMENTS.

### EROSION CONTROL SYMBOLS

TITLE	KEY	SYMBOL
SILT FENCE	SF	SF
VEHICLE TRACKING CONTROL	VTC	[Symbol]
CONCRETE WASHOUT AREA	CWA	[Symbol]
SANITARY FACILITIES	SAN	[Symbol]
STABILIZED STAGING AREA MATERIAL/EQUIP. STORAGE	SSA	[Symbol]
SEEDING AND MULCHING	SM	[Symbol]
GRAVEL BAG	GB	[Symbol]
INLET PROTECTION	IP	[Symbol]

### SYMBOLS LEGEND

NOTE: REFER TO SURVEY FOR EXISTING CONDITIONS SYMBOLS LEGEND.

(1000)	EXISTING CONTOURS
1000	PROPOSED CONTOURS
1.5%	PROPOSED FLOW ARROW
(1.5%)	EXISTING FLOW ARROW
---	PROPERTY LINE
[Hatched Box]	NEW BUILDING CONSTRUCTION
[Stippled Box]	ASPHALT PATCH
[Square]	NEW MONUMENT SIGN LOCATION
[Line]	NEW CONCRETE PARKING BLOCK
[Dashed Line]	PROPOSED SWALE IN PAVEMENT/LANDSCAPE
[Square]	PROPOSED LIGHT POST

### BENCHMARK

TEMPORARY BENCHMARK #1: ELEVATION = 6443.54', SET MAG NAIL, N:1377025.58, E:3233108.44.  
 TEMPORARY BENCHMARK #2: ELEVATION = 6445.80', SET MAG NAIL, N:1377253.45, E:3233066.72.

VERTICAL DATUM: BASED ON OPUS SOLUTION DATED 4/30/2019, NAVD88.  
 GRADE FLAG ELEVATIONS SHOWN HEREON ARE TRUNCATED BY 6400 FEET.

### BASIS OF BEARING

BEARINGS ARE BASED ON GRID CENTRAL FOR COLORADO COORDINATE SYSTEM, CENTRAL ZONE, NAD83. LATITUDE = 38°51'57.09193", LONGITUDE = 10°40'53.61704". CONVERGENCE ANGLE = 0°11'59".

### SITE EXCAVATION REQUIREMENTS

A GEOTECHNICAL ANALYSIS HAS BEEN PERFORMED ON THIS SITE. REFER TO PROJECT MANUAL.

FOLLOW GEOTECHNICAL ANALYSIS RECOMMENDATIONS FOR SITE EXCAVATION REQUIREMENTS.

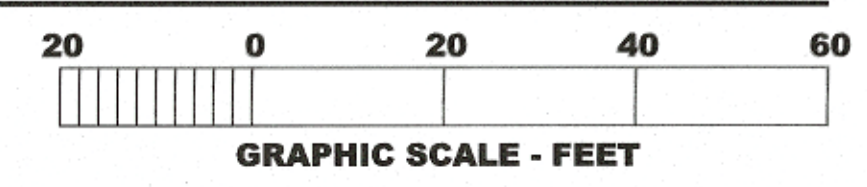
REFER TO STRUCTURAL DRAWINGS FOR BUILDING EXCAVATION REQUIREMENTS.

**CAUTION:**  
 INFORMATION ON THIS DRAWING CONCERNING TYPE AND LOCATION OF UNDERGROUND AND OTHER UTILITIES IS NOT GUARANTEED TO BE ACCURATE OR ALL INCLUSIVE. THE CONTRACTOR IS RESPONSIBLE FOR MAKING HIS OWN DETERMINATION AS TO THE TYPE AND LOCATION OF UNDERGROUND AND OTHER UTILITIES AS MAY BE NECESSARY TO AVOID DAMAGE THERETO.



### 1 SITE EROSION CONTROL PLAN

C1.2 SCALE: 1" = 20'-0"



PREPARED UNDER THE SUPERVISION OF TAIT & ASSOCIATES, INC.

**TAIT**  
 Since 1984

6163 East County Road 16  
 Loveland, CO 80537  
 P: 970/613/1447 F: 970/613/1897  
 www.tait.com

Los Angeles, Boise, Sacramento, Denver, Dallas, Rancho Cucamonga

ALEX HOIHE PE 41703

**CRAIG A. SCNEIDER, AIA**  
 ARCHITECT

1736 East Sunshine, Suite 417  
 Springfield, Missouri 65804  
 e-mail: architect@eterryscneider.com

417.862.6558  
 Fax: 417.862.3285

**PROJECT:**  
 NEW O'REILLY AUTO PARTS STORE  
 N. MARKSHEFFEL ROAD  
 COLORADO SPRINGS, CO #11

**SITE EROSION CONTROL PLAN**

**O'Reilly AUTO PARTS**

CORPORATE OFFICES  
 233 SOUTH PATTERSON  
 SPRINGFIELD, MISSOURI 65802  
 (417) 862-2674 TELEPHONE

COMM #	4369
DATE:	10-11-19
REVISION	
DATE:	



# STANDARD NOTES FOR EL PASO COUNTY GRADING AND EROSION CONTROL PLANS

- STORMWATER DISCHARGES FROM CONSTRUCTION SITES SHALL NOT CAUSE OR THREATEN TO CAUSE POLLUTION, CONTAMINATION, OR DEGRADATION OF STATE WATERS. ALL WORK AND EARTH DISTURBANCE SHALL BE DONE IN A MANNER THAT MINIMIZES POLLUTION OF ANY ON-SITE OR OFF-SITE WATERS, INCLUDING WETLANDS.
- NOTWITHSTANDING ANYTHING DEPICTED IN THESE PLANS IN WORDS OR GRAPHIC REPRESENTATION, ALL DESIGN AND CONSTRUCTION RELATED TO ROADS, STORM DRAINAGE AND EROSION CONTROL SHALL CONFORM TO THE STANDARDS AND REQUIREMENTS OF THE MOST RECENT VERSION OF THE RELEVANT ADOPTED EL PASO COUNTY STANDARDS, INCLUDING THE LAND DEVELOPMENT CODE, THE ENGINEERING CRITERIA MANUAL, THE DRAINAGE CRITERIA MANUAL, AND THE DRAINAGE CRITERIA MANUAL VOLUME 2. ANY DEVIATIONS TO REGULATIONS AND STANDARDS MUST BE REQUESTED, AND APPROVED, IN WRITING.
- A SEPARATE STORMWATER MANAGEMENT PLAN (SWMP) FOR THIS PROJECT SHALL BE COMPLETED AND AN EROSION AND STORMWATER QUALITY CONTROL PERMIT (ESQCP) ISSUED PRIOR TO COMMENCING CONSTRUCTION. DURING CONSTRUCTION THE SWMP IS THE RESPONSIBILITY OF THE DESIGNATED QUALIFIED STORMWATER MANAGER OR CERTIFIED EROSION CONTROL INSPECTOR AND SHALL BE LOCATED ON SITE AT ALL TIMES DURING CONSTRUCTION AND SHALL BE KEPT UP TO DATE WITH WORK PROGRESS AND CHANGES IN THE FIELD.
- ONCE THE ESQCP IS APPROVED AND A "NOTICE TO PROCEED" HAS BEEN ISSUED, THE CONTRACTOR MAY INSTALL THE INITIAL STAGE EROSION AND SEDIMENT CONTROL MEASURES AS INDICATED ON THE APPROVED GEC. A PRECONSTRUCTION MEETING BETWEEN THE CONTRACTOR, ENGINEER, AND EL PASO COUNTY WILL BE HELD PRIOR TO ANY CONSTRUCTION. IT IS THE RESPONSIBILITY OF THE APPLICANT TO COORDINATE THE MEETING TIME AND PLACE WITH COUNTY STAFF.
- CONTROL MEASURES MUST BE INSTALLED PRIOR TO COMMENCEMENT OF ACTIVITIES THAT MAY CONTRIBUTE POLLUTANTS TO STORMWATER. TEMPORARY SEDIMENT AND EROSION CONTROL MEASURES FOR ALL SLOPES, CHANNELS, DITCHES, OR ANY DISTURBED LAND AREA SHALL BE COMPLETED IMMEDIATELY UPON COMPLETION OF THE DISTURBANCE.
- ALL TEMPORARY SEDIMENT AND EROSION CONTROL MEASURES SHALL BE MAINTAINED AND REMAIN IN EFFECTIVE OPERATING CONDITION UNTIL PERMANENT SOIL EROSION CONTROL MEASURES ARE IMPLEMENTED AND FINAL STABILIZATION IS ESTABLISHED. ALL PERSONS ENGAGED IN LAND DISTURBANCE ACTIVITIES SHALL ASSESS THE ADEQUACY OF CONTROL MEASURES AT THE SITE AND IDENTIFY IF CHANGES TO THOSE CONTROL MEASURES IS NEEDED TO ENSURE THE CONTINUED EFFECTIVE PERFORMANCE OF THE CONTROL MEASURES. ALL CHANGES TO TEMPORARY SEDIMENT AND EROSION CONTROL MEASURES MUST BE INCORPORATED INTO THE STORMWATER MANAGEMENT PLAN PRIOR TO IMPLEMENTATION.
- TEMPORARY STABILIZATION SHALL BE IMPLEMENTED ON DISTURBED AREAS AND STOCKPILES WHERE GROUND DISTURBING CONSTRUCTION ACTIVITY HAS PERMANENTLY CEASED OR TEMPORARILY CEASED FOR LONGER THAN 14 DAYS. AN AREA THAT IS GOING TO REMAIN IN AN INTERIM STATE FOR MORE THAN 60 DAYS SHALL ALSO BE STABILIZED.
- FINAL STABILIZATION MUST BE IMPLEMENTED AT ALL APPLICABLE CONSTRUCTION SITES. FINAL STABILIZATION IS ACHIEVED WHEN ALL GROUND DISTURBING ACTIVITIES ARE COMPLETE AND ALL DISTURBED AREAS EITHER HAVE A UNIFORM VEGETATIVE COVER WITH INDIVIDUAL PLAN DENSITY OF 70 PERCENT OF PRE-DISTURBANCE LEVELS ESTABLISHED OR EQUIVALENT PERMANENT ALTERNATIVE STABILIZATION METHOD IS IMPLEMENTED. ALL TEMPORARY SEDIMENT AND EROSION CONTROL MEASURES SHALL BE REMOVED UPON FINAL STABILIZATION AND BEFORE PERMIT CLOSURE.
- ALL PERMANENT STORMWATER MANAGEMENT FACILITIES SHALL BE INSTALLED AS DEFINED IN THE APPROVED PLANS. ANY PROPOSED CHANGES THAT EFFECT THE HYDROLOGY OR HYDRAULICS OF A PERMANENT STORMWATER MANAGEMENT STRUCTURES MUST BE APPROVED BY THE ECM ADMINISTRATOR PRIOR TO IMPLEMENTATION.
- ANY EARTH DISTURBANCE SHALL BE CONDUCTED IN SUCH A MANNER SO AS TO EFFECTIVELY MINIMIZE ACCELERATED SOIL EROSION AND RESULTING SEDIMENTATION. ALL DISTURBANCES SHALL BE DESIGNED, CONSTRUCTED, AND COMPLETED SO THAT THE EXPOSED AREA OF ANY DISTURBED LAND SHALL BE LIMITED TO THE SHORTEST PRACTICAL PERIOD OF TIME. PRE-EXISTING VEGETATION SHALL BE PROTECTED AND MAINTAINED WITHIN 50 HORIZONTAL FEET OF A WATERS OF THE STATE, UNLESS INFEASIBLE.
- COMPACTION OF SOIL MUST BE PREVENTED IN AREAS DESIGNATED FOR INFILTRATION CONTROL MEASURES OR WHERE FINAL STABILIZATION WILL BE ACHIEVED BY VEGETATIVE COVER. AREAS DESIGNATED FOR INFILTRATION CONTROL SHALL ALSO BE PROTECTED FROM SEDIMENTATION DURING CONSTRUCTION UNTIL FINAL STABILIZATION IS ACHIEVED.
- ANY TEMPORARY OR PERMANENT FACILITY DESIGNED AND CONSTRUCTED FOR THE CONVEYANCE OF STORMWATER AROUND, THROUGH, OR FROM THE EARTH DISTURBANCE AREA SHALL BE A STABILIZED CONVEYANCE DESIGNED TO MINIMIZE EROSION AND THE DISCHARGE OF SEDIMENT OFF SITE.
- CONCRETE WASH WATER SHALL BE CONTAINED AND DISPOSED OF IN ACCORDANCE WITH THE SWMP. NO WASH WATER SHALL BE DISCHARGED TO OR ALLOWED TO RUNOFF TO STATE WATERS, INCLUDING ANY SURFACE OR SUBSURFACE STORM DRAINAGE SYSTEM OR FACILITIES. CONCRETE WASHOUT SHALL NOT BE LOCATED IN AN AREA WHERE SHALLOW GROUNDWATER MAY BE PRESENT, OR WITHIN 50 FEET OF A SURFACE WATER BODY.
- DEWATERING OPERATIONS: UNCONTAMINATED GROUND WATER MAY BE DISCHARGED ON SITE, BUT MAY NOT LEAVE THE SITE IN THE FORM OF SURFACE RUNOFF.
- EROSION CONTROL BLANKETING IS TO BE USED ON SLOPES STEEPER THAN 3:1.
- BUILDING, CONSTRUCTION, EXCAVATION, OR OTHER WASTE MATERIALS SHALL NOT BE TEMPORARILY PLACED OR STORED IN THE STREET, ALLEY, OR OTHER PUBLIC WAY, UNLESS IN ACCORDANCE WITH AN APPROVED TRAFFIC CONTROL PLAN. BMP'S MAY BE REQUIRED BY EL PASO COUNTY ENGINEERING IF DEEMED NECESSARY, BASED ON SPECIFIC CONDITIONS AND CIRCUMSTANCES.
- VEHICLE TRACKING OF SOILS AND CONSTRUCTION DEBRIS OFF-SITE SHALL BE MINIMIZED. MATERIALS TRACKED OFFSITE SHALL BE CLEANED UP AND PROPERLY DISPOSED OF IMMEDIATELY.
- CONTRACTOR SHALL BE RESPONSIBLE FOR THE REMOVAL OF ALL WASTES FROM THE CONSTRUCTION SITE FOR DISPOSAL IN ACCORDANCE WITH LOCAL AND STATE REGULATORY REQUIREMENTS. NO CONSTRUCTION DEBRIS, TREE SLASH, BUILDING MATERIAL WASTES OR UNUSED BUILDING MATERIALS SHALL BE BURIED, DUMPED, OR DISCHARGED AT THE SITE.
- THE OWNER, SITE DEVELOPER, CONTRACTOR, AND/OR THEIR AUTHORIZED AGENTS SHALL BE RESPONSIBLE FOR THE REMOVAL OF ALL CONSTRUCTION DEBRIS, DIRT, TRASH, ROCK, SEDIMENT, AND SAND THAT MAY ACCUMULATE IN THE STORM SEWER OR OTHER DRAINAGE CONVEYANCE SYSTEM AND STORMWATER APPURTENANCES AS A RESULT OF SITE DEVELOPMENT.
- THE QUANTITY OF MATERIALS STORED ON THE PROJECT SITE SHALL BE LIMITED, AS MUCH AS PRACTICAL, TO THAT QUANTITY REQUIRED TO PERFORM THE WORK IN AN ORDERLY SEQUENCE. ALL MATERIALS STORED ON-SITE SHALL BE STORED IN A NEAT, ORDERLY MANNER, IN THEIR ORIGINAL CONTAINERS, WITH ORIGINAL MANUFACTURER'S LABELS.
- NO CHEMICALS ARE TO BE USED BY THE CONTRACTOR, WHICH HAVE THE POTENTIAL TO BE RELEASED IN STORMWATER UNLESS PERMISSION FOR THE USE OF A SPECIFIC CHEMICAL IS GRANTED IN WRITING BY THE ECM ADMINISTRATOR. IN GRANTING THE USE OF SUCH CHEMICALS, SPECIAL CONDITIONS AND MONITORING MAY BE REQUIRED.
- BULK STORAGE OF PETROLEUM PRODUCTS OR OTHER LIQUID CHEMICALS IN EXCESS OF 55 GALLONS SHALL HAVE ADEQUATE SECONDARY CONTAINMENT PROTECTION TO CONTAIN ALL SPILLS AND PREVENT ANY SPILLED MATERIAL FROM ENTERING STATE WATERS, INCLUDING ANY SURFACE OR SUBSURFACE STORM DRAINAGE SYSTEM OR FACILITIES.
- NO PERSON SHALL CAUSE THE IMPEDIMENT OF STORMWATER FLOW IN THE FLOW LINE OF THE CURB AND GUTTER OR IN THE DITCH FLOW LINE.
- INDIVIDUALS SHALL COMPLY WITH THE "COLORADO WATER QUALITY CONTROL ACT" (TITLE 25, ARTICLE 8, CRS), AND THE "CLEAN WATER ACT" (33 USC 1344), IN ADDITION TO THE REQUIREMENTS INCLUDED IN THE DCM VOLUME II AND THE ECM APPENDIX I. ALL APPROPRIATE PERMITS MUST BE OBTAINED BY THE CONTRACTOR PRIOR TO CONSTRUCTION (NPDES, FLOODPLAIN, 404, FUGITIVE DUST, ETC.). IN THE EVENT OF CONFLICTS BETWEEN THESE REQUIREMENTS AND LAWS, RULES, OR REGULATIONS OF OTHER FEDERAL, STATE, OR COUNTY AGENCIES, THE MORE RESTRICTIVE LAWS, RULES, OR REGULATIONS SHALL APPLY.
- ALL CONSTRUCTION TRAFFIC MUST ENTER/EXIT THE SITE AT APPROVED CONSTRUCTION ACCESS POINTS.
- PRIOR TO ACTUAL CONSTRUCTION THE PERMITEE SHALL VERIFY THE LOCATION OF EXISTING UTILITIES.
- A WATER SOURCE SHALL BE AVAILABLE ON SITE DURING EARTHWORK OPERATIONS AND UTILIZED AS REQUIRED TO MINIMIZE DUST FROM EARTHWORK EQUIPMENT AND WIND.
- THE SOILS REPORT FOR THIS SITE HAS BEEN PREPARED BY TERRACON CONSULTANTS, INC. AND SHALL BE CONSIDERED A PART OF THESE PLANS.
- AT LEAST TEN (10) DAYS PRIOR TO THE ANTICIPATED START OF CONSTRUCTION, FOR PROJECTS THAT WILL DISTURB 1 ACRE OR MORE, THE OWNER OR OPERATOR OF CONSTRUCTION ACTIVITY SHALL SUBMIT A PERMIT APPLICATION FOR STORMWATER DISCHARGE TO THE COLORADO DEPARTMENT OF PUBLIC HEALTH AND ENVIRONMENT, WATER QUALITY DIVISION. THE APPLICATION CONTAINS CERTIFICATION OF COMPLETION OF A STORMWATER MANAGEMENT PLAN (SWMP), OF WHICH THIS GRADING AND EROSION CONTROL PLAN MAY BE A PART. FOR INFORMATION OR APPLICATION MATERIALS CONTACT:  
 COLORADO DEPARTMENT OF PUBLIC HEALTH AND ENVIRONMENT  
 WATER QUALITY CONTROL DIVISION  
 WQCD - PERMITS  
 4300 CHERRY CREEK DRIVE SOUTH  
 DENVER, CO 80246-1530  
 ATTN: PERMITS UNIT



Replace with the latest notes from the GEC Checklist.

Include the temporary BMP details on the plan set.  
 Make sure details are sufficiently scaled to be legible when sheet is printed on 11x17

PREPARED UNDER THE SUPERVISION OF TAIT & ASSOCIATES, INC.



6163 East County Road 16  
 Loveland, CO 80537  
 P: 970(613)1447 F: 970(613)1897  
 www.tait.com



Los Angeles Boke Sacramento  
 Denver Rancho Cucamonga

ALEX HOIME, PE 41703

**CRAIG A. SCHNEIDER, AIA**  
**ARCHITECT**

417-862-0558  
 FAX: 417-862-3265  
 e-mail: architect@cschneider.net

PROJECT:  
**NEW O'REILLY AUTO PARTS STORE**  
**N. MARKSHEFFEL ROAD**  
**COLORADO SPRINGS, CO #11**

**O'Reilly AUTO PARTS**  
 CORPORATE OFFICES  
 233 SOUTH PATTERSON  
 SPRINGFIELD, MISSOURI 65802  
 (417) 862-2674 TELEPHONE

COMM # 4369  
 DATE: 10-11-19  
 REVISION  
 DATE:



# GEC Plan\_V1.pdf Markup Summary

## Callout (5)



**Subject:** Callout  
**Page Label:** 3  
**Lock:** Locked  
**Author:** dsdlaforce  
**Date:** 2/10/2020 9:10:49 AM  
**Status:**  
**Color:** ■  
**Layer:**  
**Space:**

Replace with the latest notes from the GEC Checklist.



**Subject:** Callout  
**Page Label:** 1  
**Lock:** Locked  
**Author:** dsdlaforce  
**Date:** 2/10/2020 9:10:50 AM  
**Status:**  
**Color:** ■  
**Layer:**  
**Space:**

Update signature block per the attached checklist. County signature block has a second paragraph.



**Subject:** Callout  
**Page Label:** 2  
**Lock:** Locked  
**Author:** dsdlaforce  
**Date:** 2/10/2020 9:10:56 AM  
**Status:**  
**Color:** ■  
**Layer:**  
**Space:**

delineate and label the limits of construction and disturbance.



**Subject:** Callout  
**Page Label:** 1  
**Lock:** Locked  
**Author:** dsdlaforce  
**Date:** 2/10/2020 9:10:57 AM  
**Status:**  
**Color:** ■  
**Layer:**  
**Space:**

Add Title:  
O'Reilly Auto Parts Store  
Grading and Erosion Control Plan  
El Paso County, Colorado



**Subject:** Callout  
**Page Label:** 1  
**Lock:** Locked  
**Author:** dsdlaforce  
**Date:** 2/10/2020 9:10:57 AM  
**Status:**  
**Color:** ■  
**Layer:**  
**Space:**

Add PCD File No. PPR202



---

File Attachment (1)

---



**Subject:** File Attachment  
**Page Label:** 3  
**Lock:** Locked  
**Author:** dsdlaforce  
**Date:** 2/10/2020 9:10:50 AM  
**Status:**  
**Color:** ■  
**Layer:**  
**Space:**

---

Text Box (2)

---



**Subject:** Text Box  
**Page Label:** 3  
**Lock:** Locked  
**Author:** dsdlaforce  
**Date:** 2/10/2020 9:10:53 AM  
**Status:**  
**Color:** ■  
**Layer:**  
**Space:**

Include the temporary BMP details on the plan set.  
Make sure details are sufficiently scaled to be legible when sheet is printed on 11x17

OF BOX  
SECTION  
ADD FOOTPRINT  
NO BLOCK  
P  
REAR WALLS  
CREATE



---

**Subject:** Text Box  
**Page Label:** 1  
**Lock:** Locked  
**Author:** dsdlaforce  
**Date:** 2/10/2020 9:10:58 AM  
**Status:**  
**Color:** ■  
**Layer:**  
**Space:**

Add Sheet index