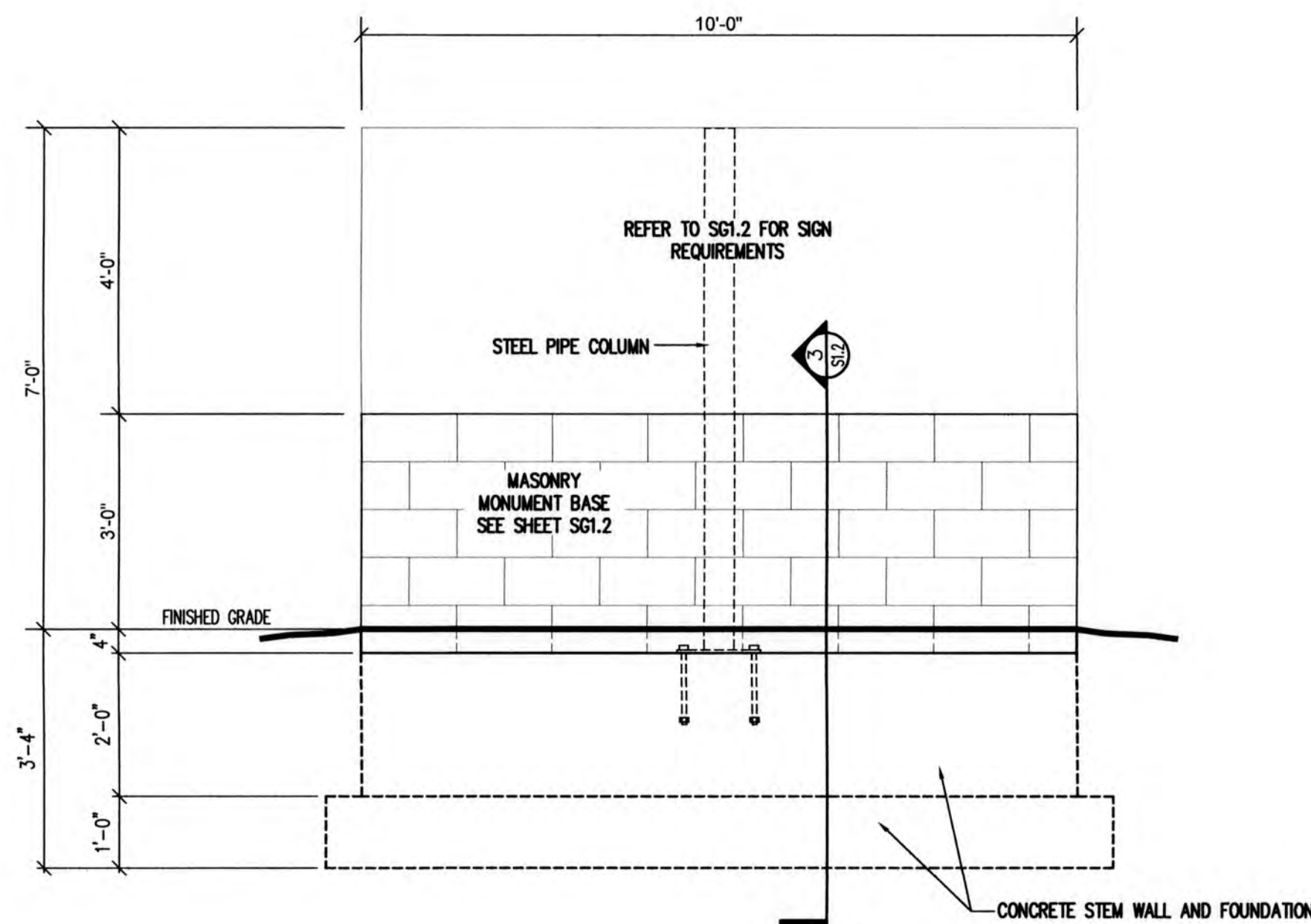


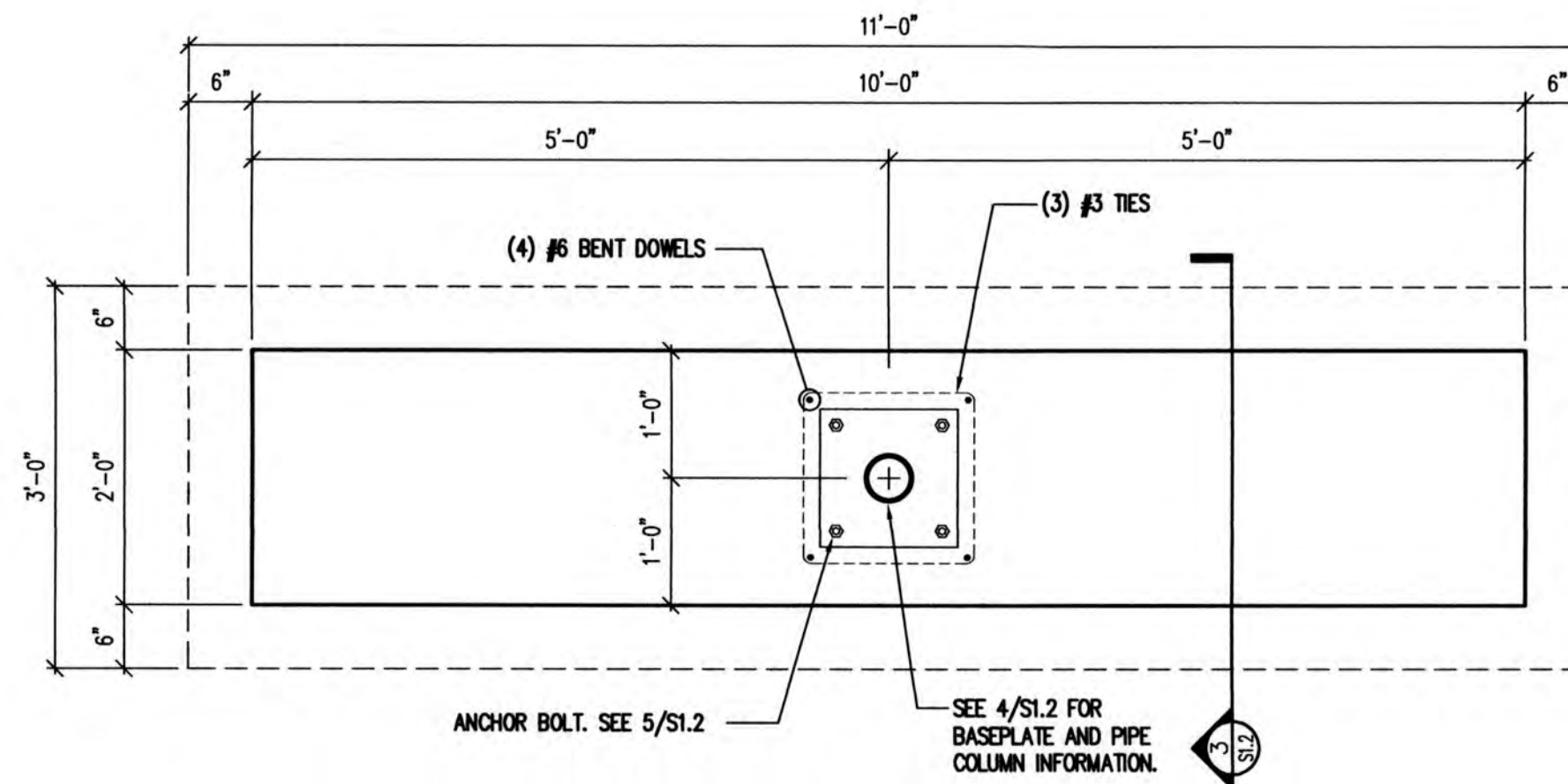
General Note: a sign permit will be required to be submitted separately. It can be initiated online at epcdevplanreview.com



1 GROUND SIGN ELEVATION

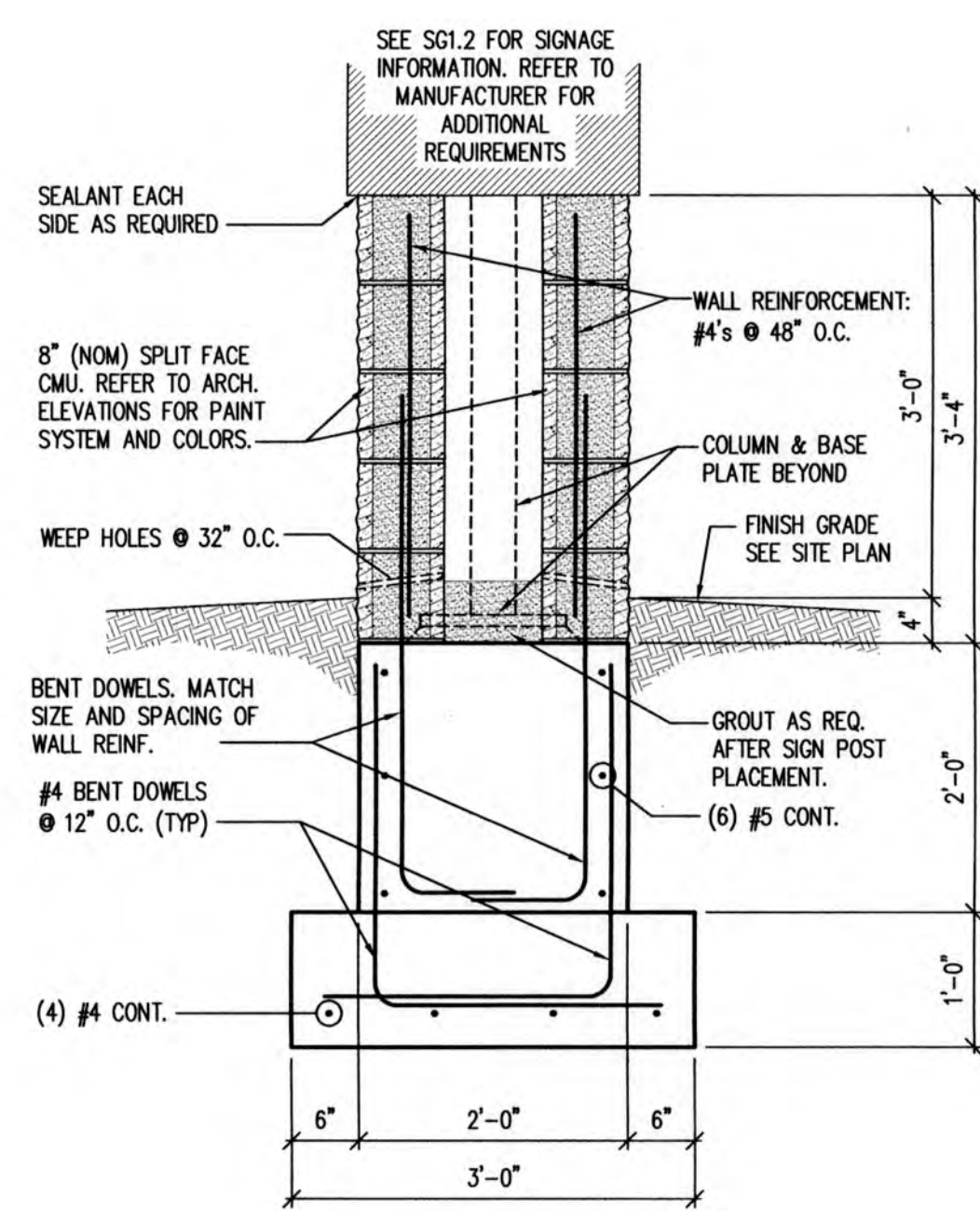
S1.2 SCALE: 1/2" = 1'-0"

NOTE:
VERIFY LOCATION PRIOR TO POURING TO ASSURE NO INTERFERENCE WITH UTILITIES



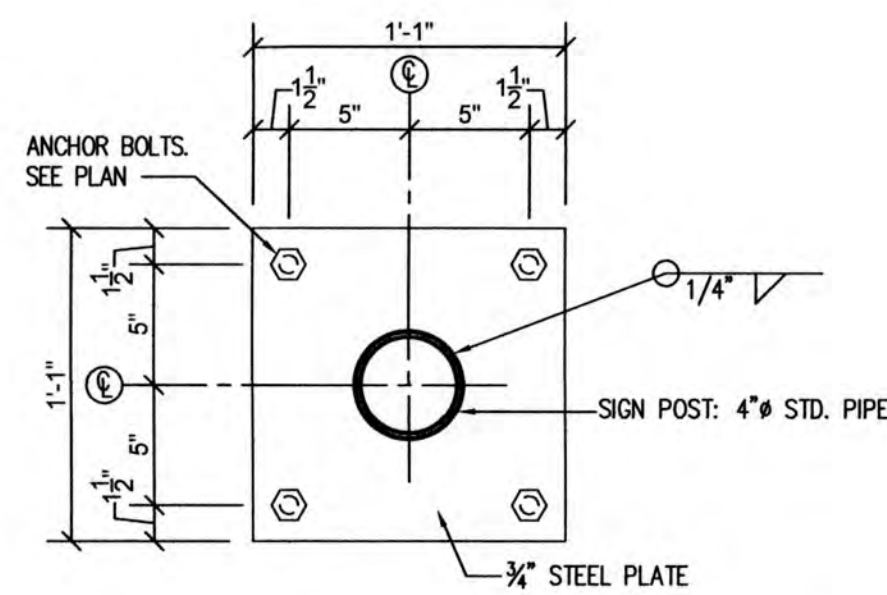
2 MONUMENT SIGN FOUNDATION PLAN

S1.2 SCALE: 3/4" = 1'-0"



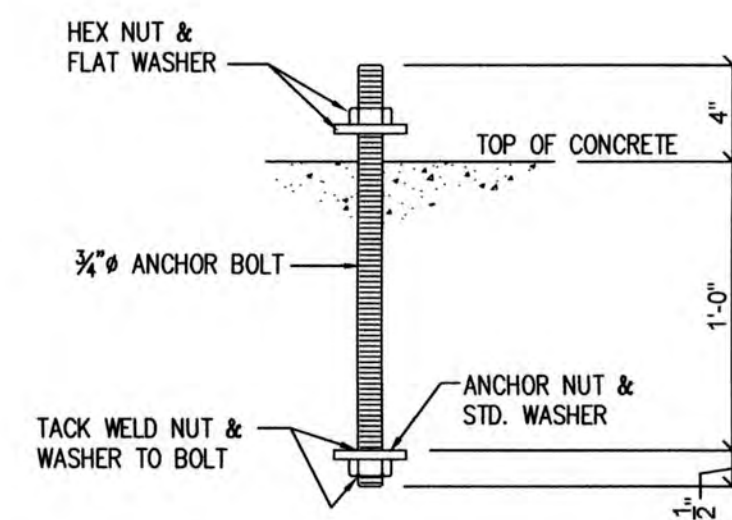
3 MONUMENT SIGN FOUNDATION SECTION

S1.2 SCALE: 3/4" = 1'-0"



4 SIGN BASE PLATE

S1.2 SCALE: 1 1/2" = 1'-0"



BOLT MATERIAL MAY BE F1554 GR. 36, OR CONTINUOUSLY THREADED A36 ROD. ALL ANCHOR BOLTS SHALL BE CLEAN AND FREE OF ALL OIL, GREASE, ICE, ETC.

5 ANCHOR BOLT DETAIL

S1.2 SCALE: 1 1/2" = 1'-0"

GENERAL NOTES

- A. REFER TO PROJECT MANUAL FOR ADDITIONAL REQUIREMENTS.
- B. CONTACT OWNER'S OR TENANT'S DESIGNATED PROJECT ADMINISTRATOR FOR QUESTIONS OR CLARIFICATIONS.
- C. SITE SIGN FOUNDATIONS AND ROUGH-IN ELECTRICAL TO BE PROVIDED BY CONTRACTOR.
- D. REQUIRED GOVERNMENTAL PERMITS FOR PERMANENT TYPE SIGNAGE TO BE PROVIDED BY OWNER OR OTHERS (N.I.C.).

DESIGN CRITERIA

- A. GOVERNING BUILDING CODE
2017 PIKES PEAK REGIONAL BUILDING CODE (2015 IBC)
- B. WIND CRITERIA:
B.1. RISK CATEGORY II
B.2. $V_w = 130$ mph
B.3. $V_w = 100.7$ mph
B.4. EXPOSURE "C"
- C. SEISMIC CRITERIA:
C.1. SITE CLASS = D
C.2. SDC = B
C.3. $S_s = 0.185$
C.4. $S_1 = 0.059$
C.5. $S_{s1} = 0.197$
C.6. $S_{11} = 0.094$

STRUCTURAL NOTES

- A. A GEOTECHNICAL ANALYSIS HAS BEEN PERFORMED ON THIS SITE. SEE PROJECT MANUAL FOR GEOTECHNICAL INFORMATION. APPROPRIATE RECOMMENDATIONS STATED IN THE GEOTECHNICAL REPORT ISSUED BY TERRACON CONSULTANTS, INC DATED SEPTEMBER 20, 2019 SHALL BE FOLLOWED.
- B. THESE FOUNDATIONS HAVE BEEN DESIGNED FOR A VERTICAL SOIL BEARING OF 2500 psf.
- C. BRACE POLE SIGN AGAINST LATERAL FORCES UNTIL CONCRETE HAS REACHED SPECIFIED COMPRESSIVE DESIGN STRENGTH.
- D. ALL READY MIX CONCRETE SHALL BE 4000 psi FOR ALL CONCRETE PLACEMENT. DO NOT ADD WATER TO THE MIX DESIGN AFTER DELIVERY TO THE PROJECT SITE.
- E. EXPOSED EXTERIOR CONCRETE SHALL BE AIR-ENTRAINED (TOTAL AIR CONTENT = 5%).
- F. HOT OR COLD WEATHER CONCRETING SHALL BE IN ACCORDANCE WITH ACI 306-89 AND ACI 306-1-90, RESPECTIVELY.
- G. ANY CONCRETE PLACED BY MEANS OF PUMPING SHALL BE DONE IN ACCORDANCE WITH ACI 304.2R (82).
- H. CEMENT SHALL CONFORM TO A.S.T.M. C-150 TYPE III.
- I. AGGREGATES SHALL CONFORM TO A.S.T.M. C-33 FOR NORMAL WEIGHT CONCRETE.
- J. READY MIX CONCRETE SHALL BE MIXED AND DELIVERED IN ACCORDANCE WITH A.S.T.M. C-94.
- K. ADMIXTURES MAY BE USED WITH THE APPROVAL OF THE STRUCTURAL ENGINEER. ADMIXTURES USED TO INCREASE THE WORKABILITY OF THE CONCRETE SHALL NOT BE CONSIDERED TO REDUCE THE CEMENT CONTENT. NO CALCIUM CHLORIDE ADMIXTURES ALLOWED.
- L. FABRICATOR QUALIFICATIONS: FABRICATOR MUST PARTICIPATE IN THE AISC QUALITY CONTROL PROGRAM AND BE DESIGNATED AN AISC-CERTIFIED PLANT.
- M. MATERIALS:
• STRUCTURAL STEEL..... ASTM A992, GRADE 50ksi
• PLATES, ANGLES, AND MISC STEEL..... ASTM A36ksi
• ANCHOR RODS..... ASTM F1554, GRADE 36
• HIGH STRENGTH BOLTS..... ASTM F3125
• WELDING ELECTRODES..... AWS A5.1 (E70XX)
• PIPE..... ASTM A53, GRADE B
• ROUND HSS..... ASTM A500, GRADE B, Fy = 42ksi

CMU NOTES

- A. CMU SHALL CONFORM TO CURRENT BUILDING CODE PROVISIONS.
- B. VERTICAL CELLS TO BE FILLED SHALL ALIGN TO MAINTAIN AN UNOBSTRUCTED VERTICAL SHAFT NOT LESS THAN 2"x3".
- C. PROVIDE 9 ga. LADDER TYPE JOINT REINFORCEMENT AT 16" O.C.
- D. CENTER VERTICAL REINFORCEMENT WITH 9 ga. HOT DIP GALVANIZED REBAR POSITIONERS 24" AT O.C.



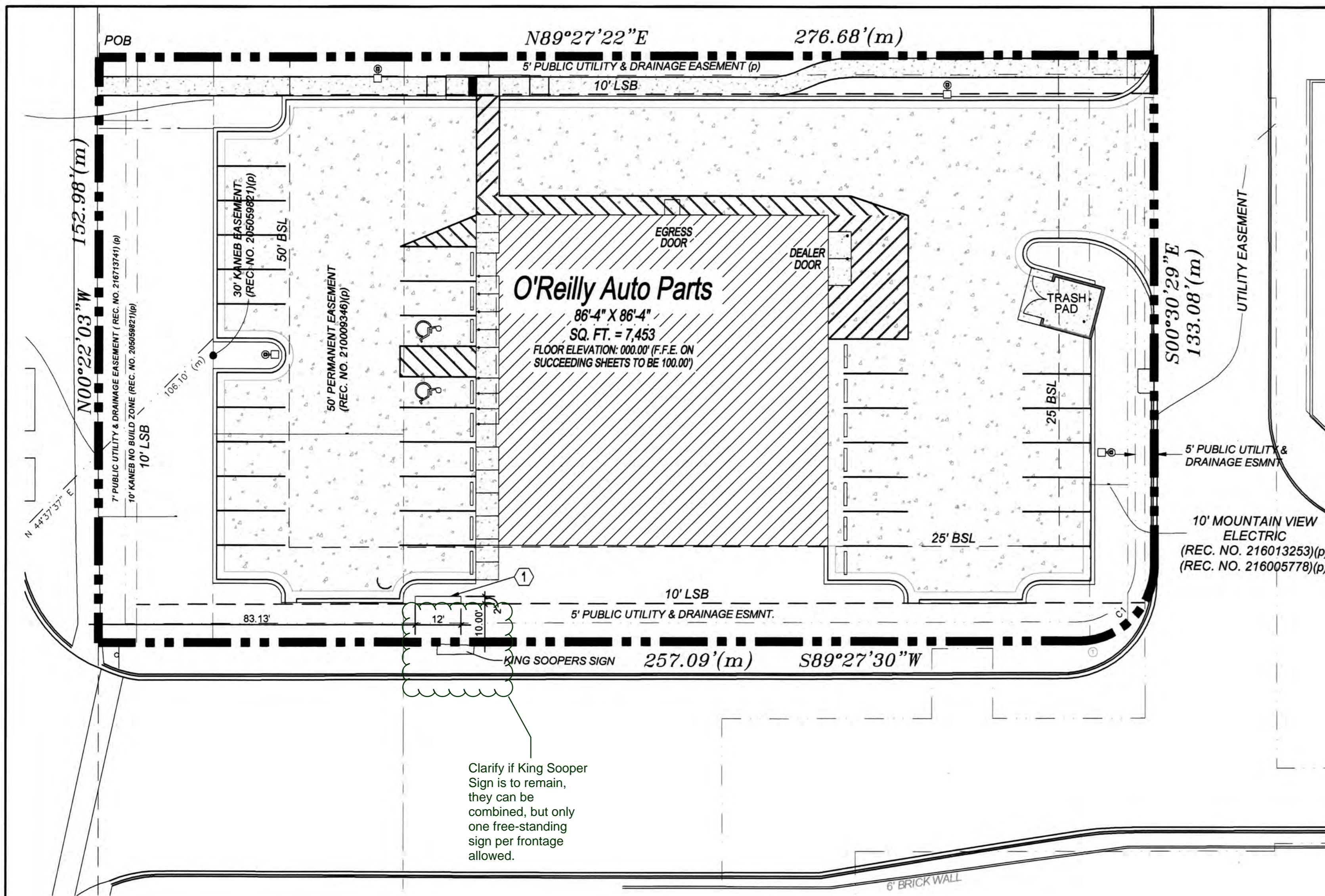
CRAIG A. SCHNEIDER, AIA
ARCHITECT
1736 East Sunshine, Suite 417
Springfield, Missouri 65804
417.862.0558
417.862.3265
e-mail: architect@estertyschneider.com

PROJECT:
NEW O'REILLY AUTO PARTS STORE
N. MARKSHEFFEL ROAD
COLORADO SPRINGS, CO #11
SIGN FOUNDATION DETAILS

O'Reilly AUTO PARTS
CORPORATE OFFICES
233 SOUTH PATTERSON
SPRINGFIELD, MISSOURI 65802
(417) 862-2674 TELEPHONE

COMM # 4369
DATE: 10-11-19
REVISION
DATE:

Jeffrey S. Smith, P.E.
Jeffrey S. Smith P.E. 24554
1801 W 32nd St Bldg B Ste 104 * JOPLIN, MISSOURI 64804
P.O. Box 8102 * JOPLIN, MISSOURI 64802
PHONE: 417-624-0444 * FAX: 417-624-0430



1 SITE SIGNAGE PLAN
SG1.1 SCALE: 1" = 20'-0"



Clarify if King Sooper Sign is to remain, they can be combined, but only one free-standing sign per frontage allowed.

GENERAL NOTES

- (A) REFER TO PROJECT MANUAL AND SCOPE OF WORK SCHEDULE FOR ADDITIONAL REQUIREMENTS.
- (B) SITE DIMENSIONS TO FACE OF CONCRETE FOUNDATION, SIDEWALK, CURB GUTTER LINE, PROPERTY LINE, OR CENTER LINE OF STRIPING UNLESS OTHERWISE NOTED.
- (C) COORDINATE WORK WITH OTHER SITE RELATED DEVELOPMENT DRAWINGS.
- (D) PRIOR TO INSTALLATION, CONTRACTOR TO VERIFY LOCATIONS OF LIGHT POLES, LANDSCAPING, AND UTILITIES DO NOT CONFLICT WITH SITE SIGN LOCATION SHOWN. REFER TO US1 AND CIVIL FOR UTILITY LOCATIONS. IF CONFLICT IS DISCOVERED, CONTRACTOR TO NOTIFY OWNER'S REPRESENTATIVE PRIOR TO PROCEEDING WITH THE WORK.
- (E) "COMING SOON" TEMPORARY CONSTRUCTION SIGN TO BE PROVIDED BY CONTRACTOR. APPLIED SIGNAGE GRAPHICS TO BE OWNER FURNISHED AND CONTRACTOR INSTALLED. LOCATE TEMPORARY CONSTRUCTION SIGN ON SITE SO AS TO BE VISIBLE TO PUBLIC FROM RIGHT-OF-WAY. REFER TO DETAIL 1/SG1.2.

SPECIAL NOTE:
 AVOID OBSCURING VISIBILITY OF SITE SIGN FROM RIGHT OF WAY WITH LARGE PLANTINGS AND LANDSCAPING. SUBMIT LANDSCAPING LAYOUT FOR FINAL OWNER REVIEW AND APPROVAL PRIOR TO INSTALLATION.

KEY NOTES

- (1) SITE SIGN, REFER TO ELEVATION 2/SG1.2



CRAIG A. SCHNEIDER, AIA
ARCHITECT

417.862.0558
 Fax: 417.862.3265
 e-mail: archtct@esteryschneider.com

1736 East Sunshine, Suite 417
 Springfield, Missouri 65804

PROJECT:
NEW O'REILLY AUTO PARTS STORE
N. MARKSHEFFEL ROAD
COLORADO SPRINGS, CO #11
SITE SIGNAGE PLAN

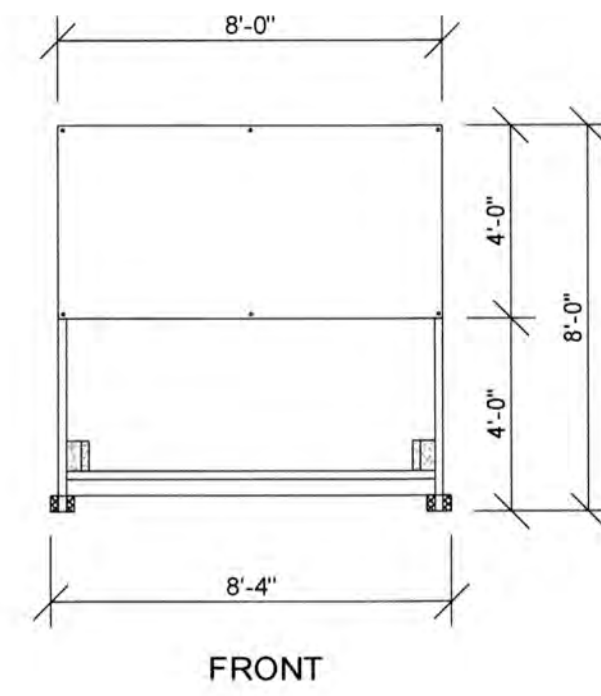
O'Reilly AUTO PARTS
 CORPORATE OFFICES
 233 SOUTH PATTERSON
 SPRINGFIELD, MISSOURI 65802
 (417) 862-2674 TELEPHONE

COMM #	4369
DATE:	10-11-19
REVISION	
DATE:	

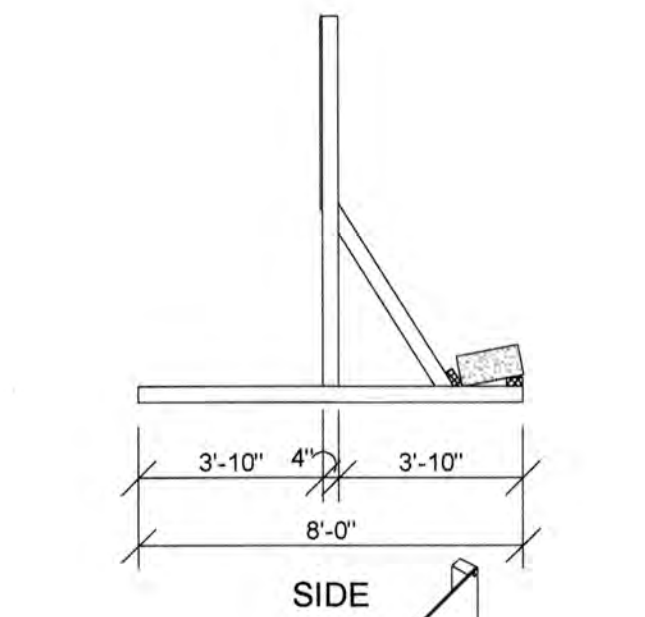
CAUTION:
 INFORMATION ON THIS DRAWING CONCERNING TYPE AND LOCATION OF UNDERGROUND AND OTHER UTILITIES IS NOT GUARANTEED TO BE ACCURATE OR ALL INCLUSIVE. THE CONTRACTOR IS RESPONSIBLE FOR MAKING HIS OWN DETERMINATION AS TO THE TYPE AND LOCATION OF UNDERGROUND AND OTHER UTILITIES AS MAY BE NECESSARY TO AVOID DAMAGE THERETO.



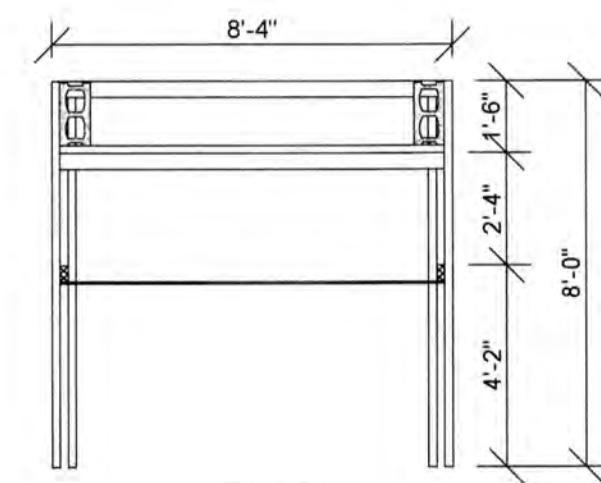
Know what's below
Call before you dig.



FRONT

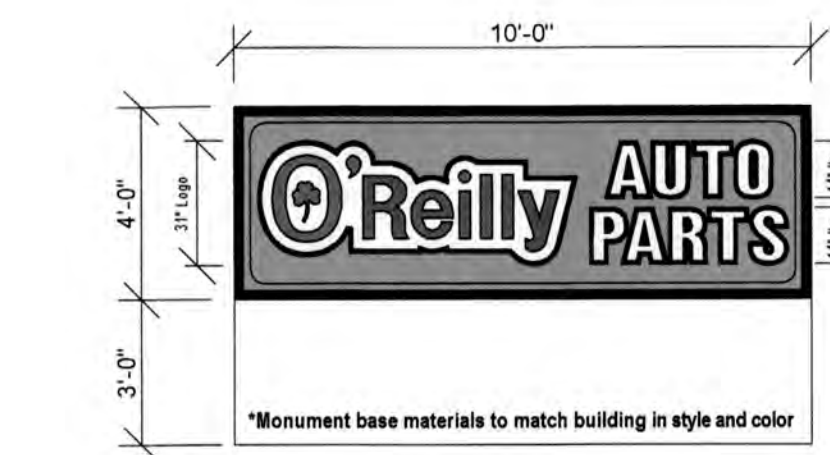
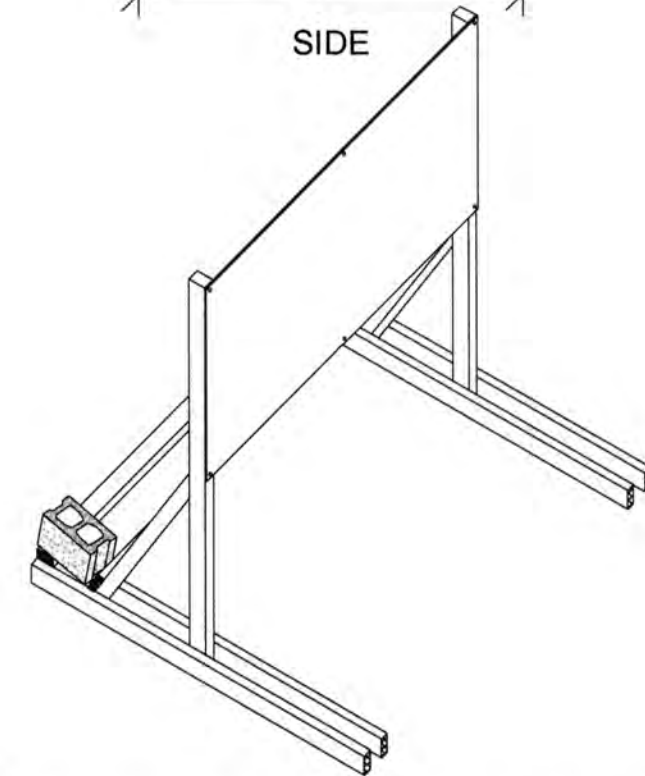


SIDE



TOP

1
COMING SOON
TEMPORARY CONSTRUCTION SIGN
SQ1.2 SCALE: 1/4" = 1'-0"

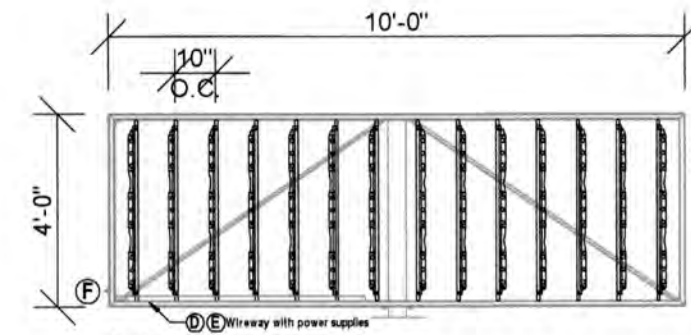


Part 4.12 Monument Cabinet, RS OF 48 30 11, R

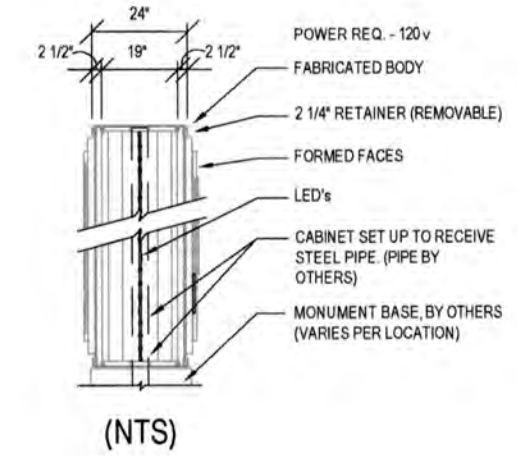
Manufacture and supply one (1) new diff illum. monument cabinet with formed and embossed faces.

- A) Faces are formed out of lean with 2" draw. "O'Reilly" graphics are double embossed, "Auto Parts" copy is single embossed with painted graphics on 2nd surface. Graphics to match PMS 200c Red, PMS 342c Green, Black and White.
- B) 24" deep fabricated cabinet with 2 1/4" (removable) non-hinged retainers. Cabinet internally set up to receive steel pipe (pipe by others). Vertical GE (GEDS71-2) White DS LED illumination. Paint cabinet to: Gloss Black. Internal pipe/cabinet exposure calculation: C80

2
GROUND SIGN ELEVATION
SQ1.2 SCALE: 1/4" = 1'-0"



- A) 24" deep fabricated cabinet with support structure and 2 1/4" retainers
- B) 4" Sch. 40 steel pipe provided by others, shown for reference only.
- C) GE-Tetra PowerStrip DS White LED's, Part #GEDS71-2 (7100HQ) 14 LED's per module (7 LED's per side) on GE-Tetra Mounting Rails, Part #GEDSRL08 Rails on 10" centers, 42 total modules.
- D) GE-Tetra Power Supplies, Part #GEPS24-100U 24 Volt 120-277VAC 50/60 HZ Load capacity: 16 modules per power supply. Total of three (3) per display.
- E) Fabricated aluminum internal power supply wireway.
- F) Disconnect Switch.



(NTS)

GENERAL NOTES

- A) REFER TO PROJECT MANUAL FOR ADDITIONAL REQUIREMENTS.
- B) CONTACT OWNER'S OR TENANT'S DESIGNATED PROJECT ADMINISTRATOR FOR QUESTIONS OR CLARIFICATIONS.
- C) PERMANENT SIGNAGE OWNER FURNISHED AND INSTALLED. (REFER TO SCOPE OF WORK SCHEDULE). SIGNAGE GRAPHICS PROVIDED FOR REFERENCE ONLY (N.I.C.) AND CONTRACTOR'S COORDINATION WITH SPECIFIC PROJECT CONSTRUCTION CONDITIONS.
- D) SITE SIGN ROUGH-IN ELECTRICAL TO BE PROVIDED BY CONTRACTOR.
- E) REQUIRED GOVERNMENTAL PERMITS FOR PERMANENT TYPE SIGNAGE TO BE PROVIDED BY SIGN COMPANY PER OWNER'S DIRECTION (N.I.C.)
- F) "COMING SOON" TEMPORARY CONSTRUCTION SIGN TO BE PROVIDED BY GENERAL CONTRACTOR. APPLIED SIGNAGE GRAPHICS TO BE OWNER FURNISHED AND GENERAL CONTRACTOR INSTALLED. LOCATE TEMPORARY CONSTRUCTION SIGN ON SITE SO AS TO BE VISIBLE TO PUBLIC FROM RIGHT-OF-WAY.
- G) UNLESS OTHERWISE INDICATED, SITE POLE SIGN FOUNDATION CONSTRUCTION BY SIGN CONTRACTOR (BY OTHERS - NOT IN CONTRACT) AND SITE MONUMENT SIGN FOUNDATION CONSTRUCTION BY GENERAL CONTRACTOR (BASE BID).

SPECIAL NOTE:
SIGN DESIGN BY OTHERS, REFER TO SIGN CONTRACTOR'S SHOP DRAWINGS FOR ADDITIONAL REQUIREMENTS.

NOTE:
REFER TO SHEET S1.2 FOR SIGN FOUNDATION SYSTEM STRUCTURAL REQUIREMENTS.

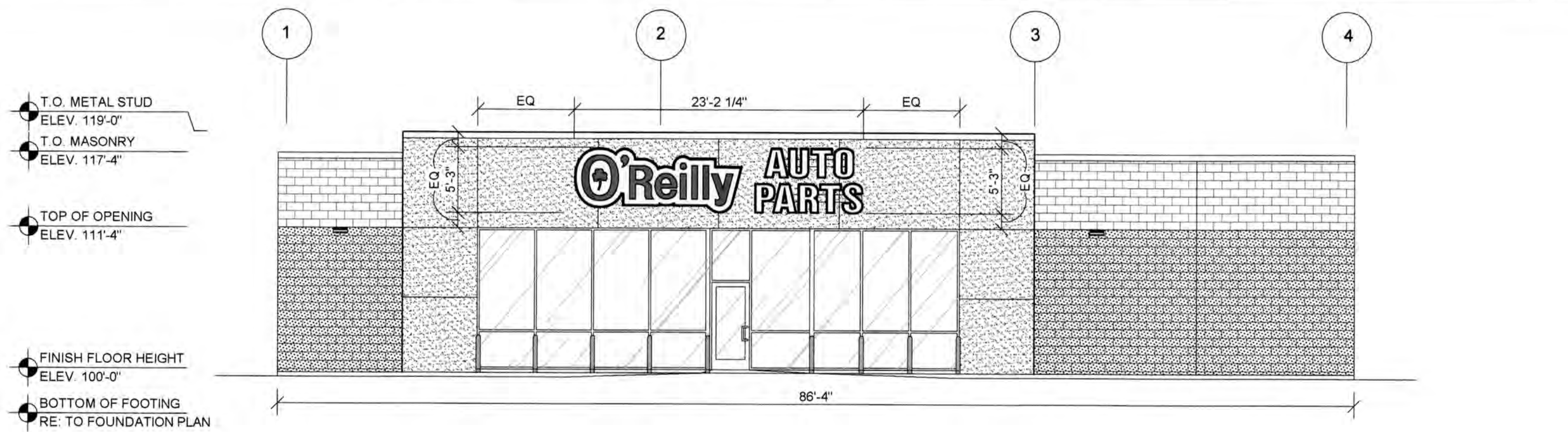
DESIGN BY OTHERS FOR REFERENCE ONLY

CRAIG A. SCHNEIDER, AIA
ARCHITECT
417.862.0558
417.862.3265
Fax: 417.862.3265
e-mail: architect@caterjtschneider.com

PROJECT:
NEW O'REILLY AUTO PARTS STORE
N. MARKSHEFFEL ROAD
COLORADO SPRINGS, CO #11
SITE SIGNAGE DETAILS

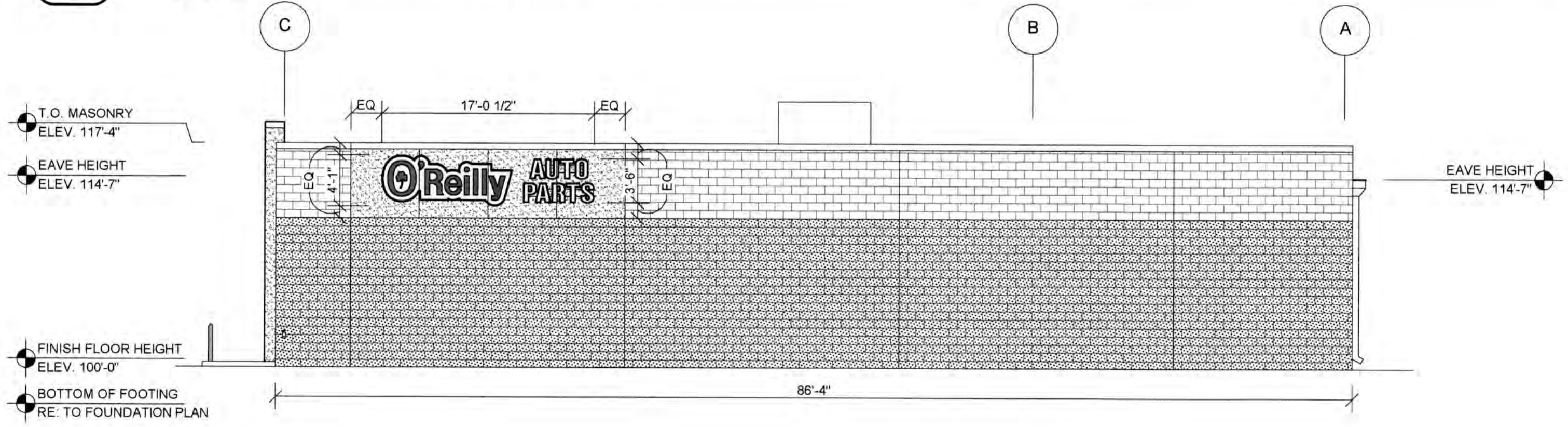
O'Reilly AUTO PARTS
CORPORATE OFFICES
233 SOUTH PATTERSON
SPRINGFIELD, MISSOURI 65802
(417) 862-2674 TELEPHONE

COMM #	4369
DATE:	10-11-19
REVISION	
DATE:	



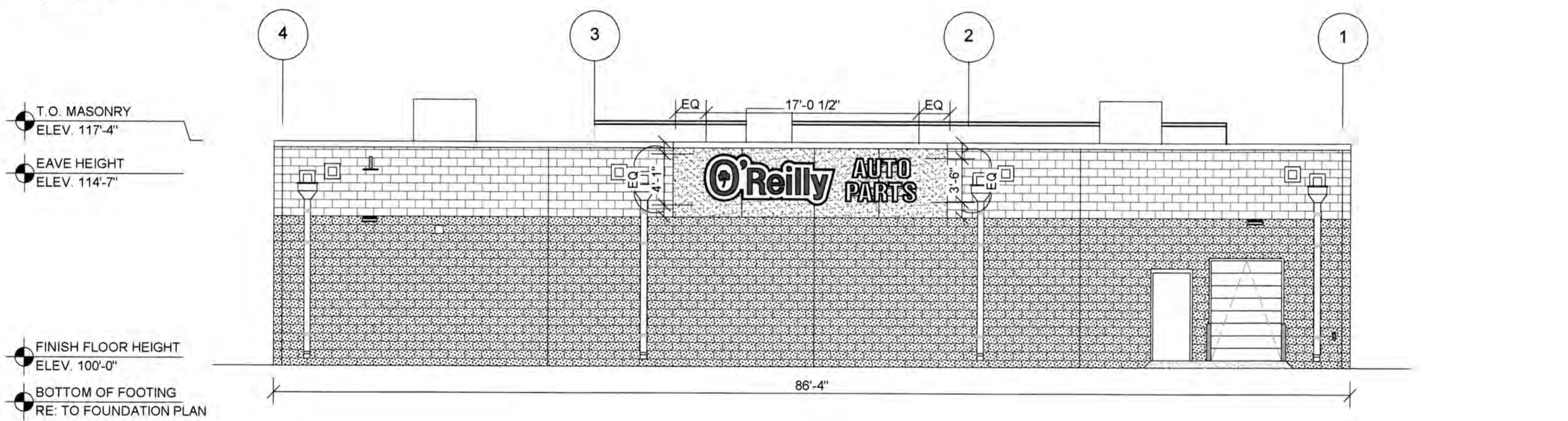
1 FRONT EXTERIOR ELEVATION

SG2.1 SCALE: 1/8" = 1'-0"



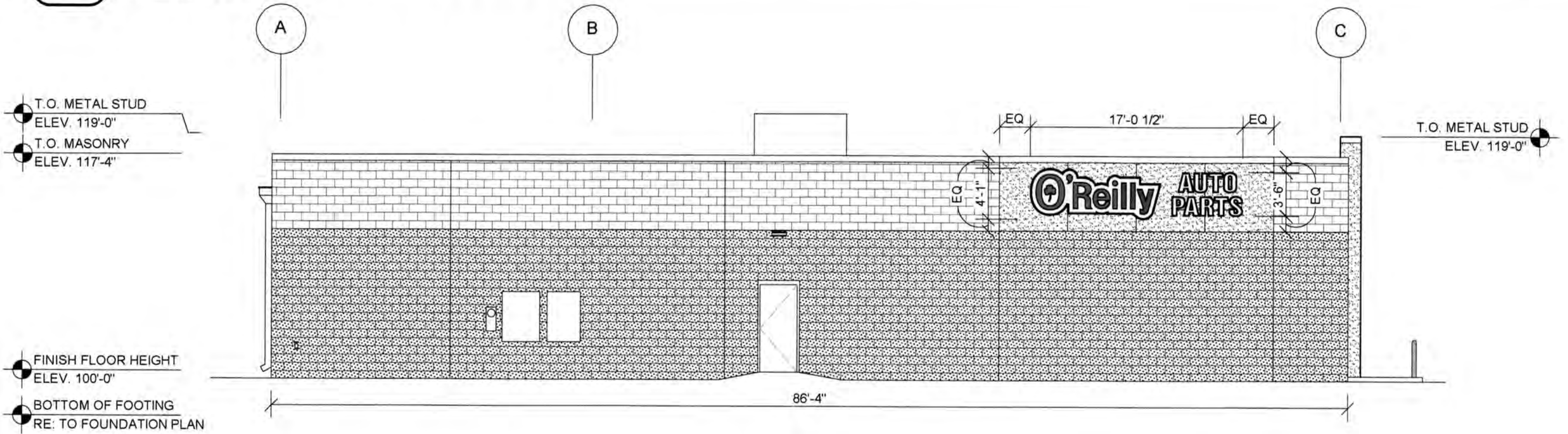
2 RIGHT EXTERIOR ELEVATION

SG2.1 SCALE: 1/8" = 1'-0"



3 REAR EXTERIOR ELEVATION

SG2.1 SCALE: 1/8" = 1'-0"

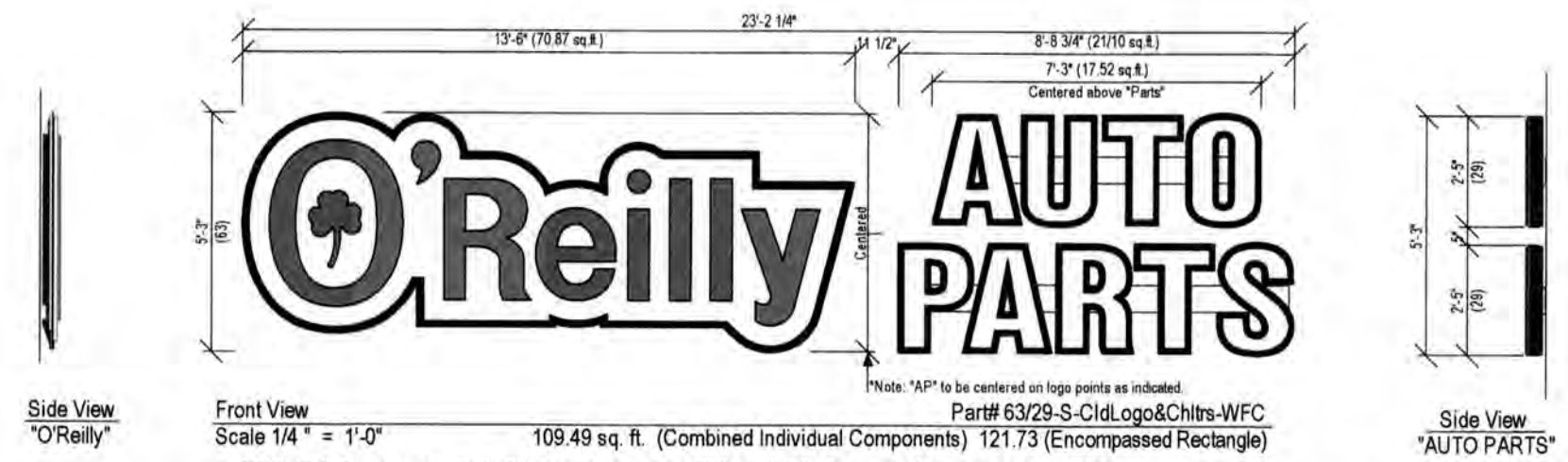


4 LEFT EXTERIOR ELEVATION

SG2.1 SCALE: 1/8" = 1'-0"

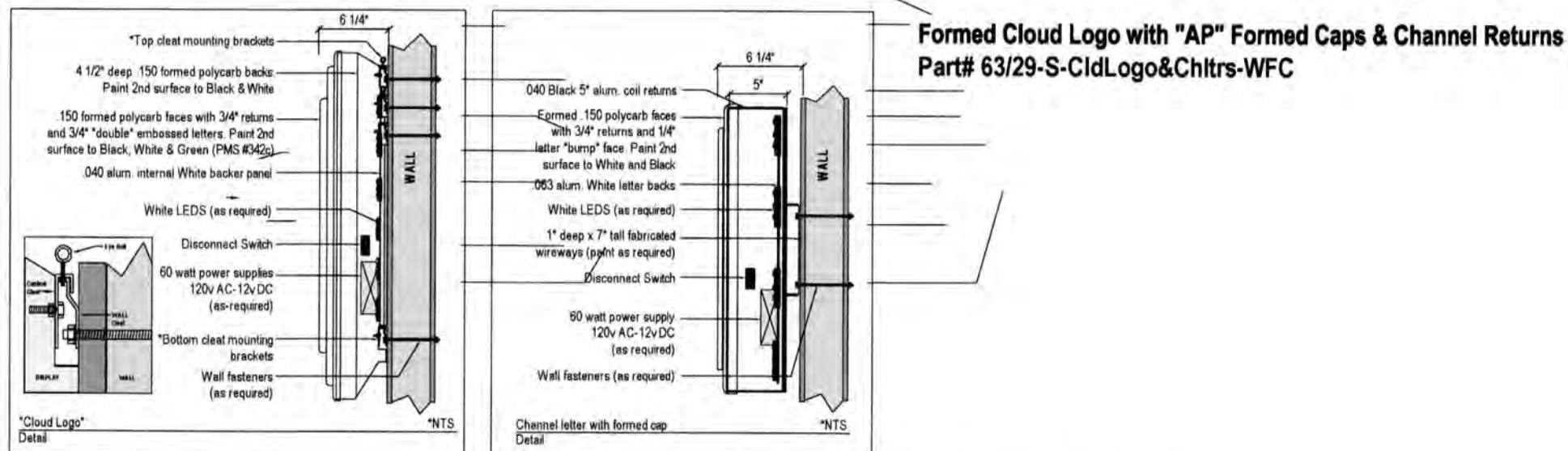
GENERAL NOTES

- A CONTACT OWNER'S OR TENANT'S DESIGNATED PROJECT ADMINISTRATOR FOR QUESTIONS OR CLARIFICATIONS.
- B BUILDING PERMANENT SIGNAGE OWNER FURNISHED AND INSTALLED. (REFER TO SCOPE OF WORK SCHEDULE). SIGNAGE GRAPHICS PROVIDED FOR REFERENCE ONLY (N.I.C.) AND CONTRACTOR'S COORDINATION WITH SPECIFIC PROJECT CONSTRUCTION CONDITIONS. CONTRACTOR TO PROVIDE BACKING AND ROUGH-IN ELECTRICAL AS REQUIRED FOR INSTALLATION. REFER TO A2.1 FOR EXTERIOR BUILDING FINISH.
- C REQUIRED GOVERNMENTAL PERMITS FOR PERMANENT TYPE SIGNAGE TO BE PROVIDED BY OWNER OR OTHERS (N.I.C.).



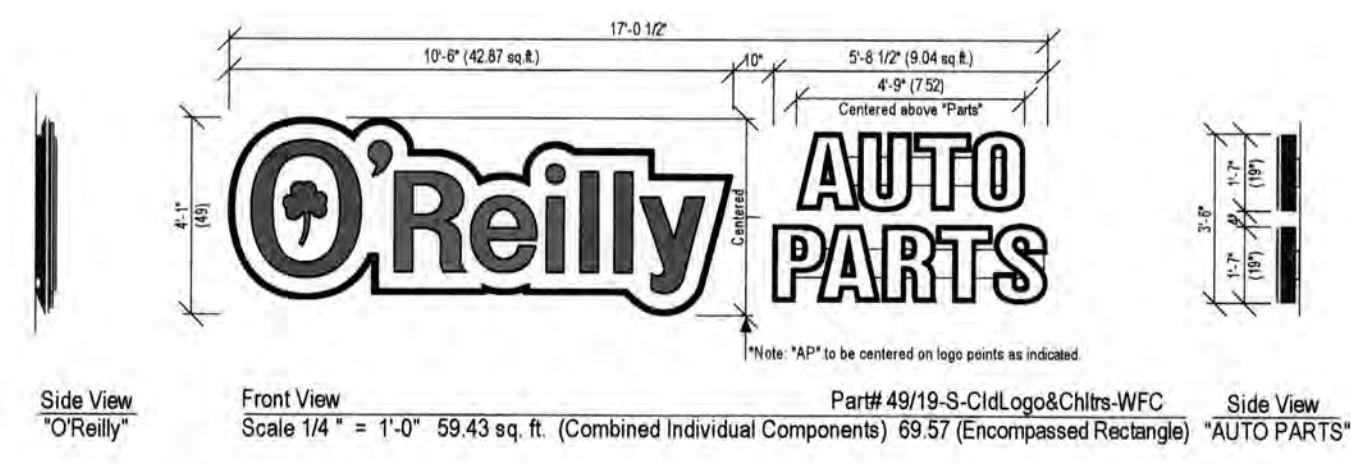
5 FRONT WALL SIGN ELEVATION

SG2.1 SCALE: 1/4" = 1'-0"



6 FRONT WALL SIGN MOUNTING DETAILS

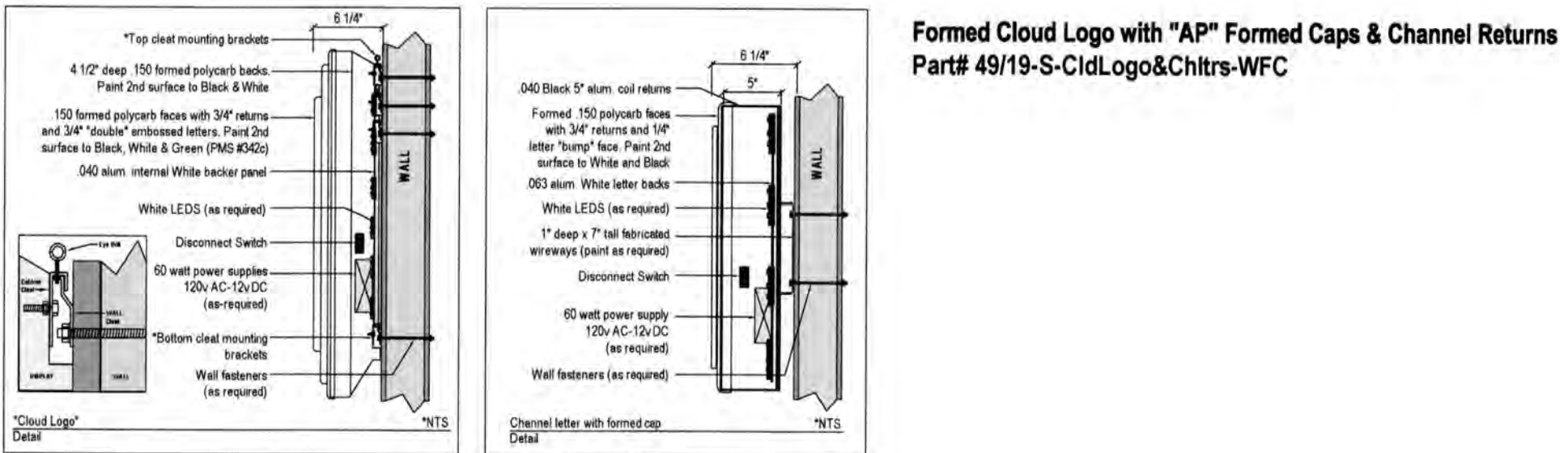
SG2.1 SCALE: 1/4" = 1'-0"



"O'Reilly" Cloud Logo with "AP" channel letters on 7" (h) x 1" (d) wireways. Wireways paint to TBD
 "O'Reilly" Cloud Logo is formed polycarb with double embossment with 2nd surface painted graphics. Paint match to: Green (PMS# 342c), Black and White.
 "AP" to have formed polycarb caps with 1/4" letter "bumps". Black 5" aluminum coil returns. 2nd surface Black and White paint. WHITE LED illumination.

5 FRONT WALL SIGN ELEVATION

SG2.1 SCALE: 1/4" = 1'-0"



5 FRONT WALL SIGN DETAILS

SG2.1 SCALE: 1/4" = 1'-0"



CRAIG A. SCHNEIDER, AIA
 ARCHITECT
 1736 East Sunshine, Suite 417
 Springfield, Missouri 65804
 417.862.0558
 Fax: 417.862.3265
 e-mail: architect@estefschneider.com

PROJECT:
 NEW O'REILLY AUTO PARTS STORE
 N. MARKSHEFFEL ROAD
 COLORADO SPRINGS, CO #11
BUILDING EXTERIOR SIGNAGE

O'Reilly AUTO PARTS
 CORPORATE OFFICES
 233 SOUTH PATTERSON
 SPRINGFIELD, MISSOURI 65802
 (417) 862-2674 TELEPHONE

COMM #	4369
DATE:	10-11-19
REVISION	
DATE:	

