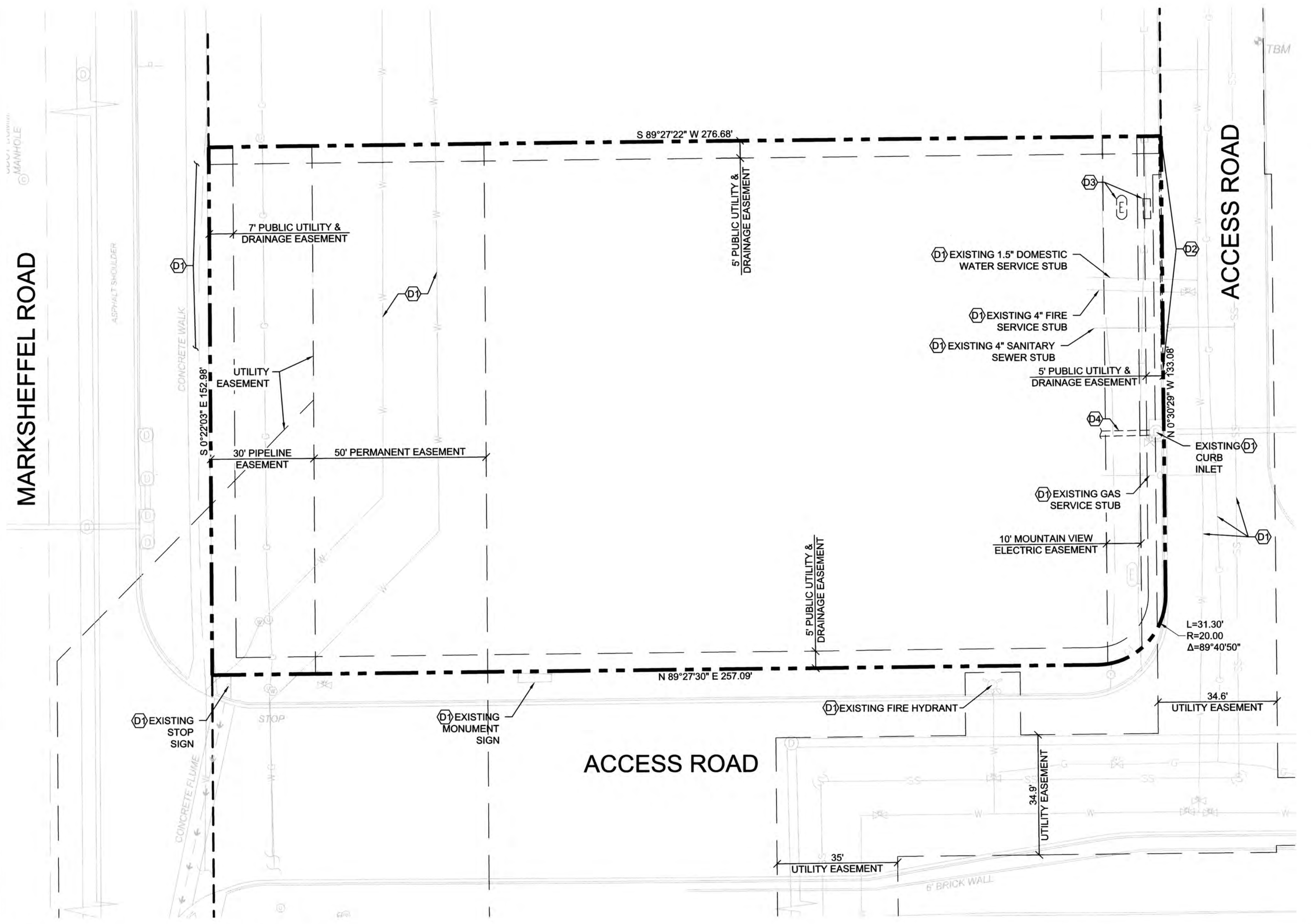
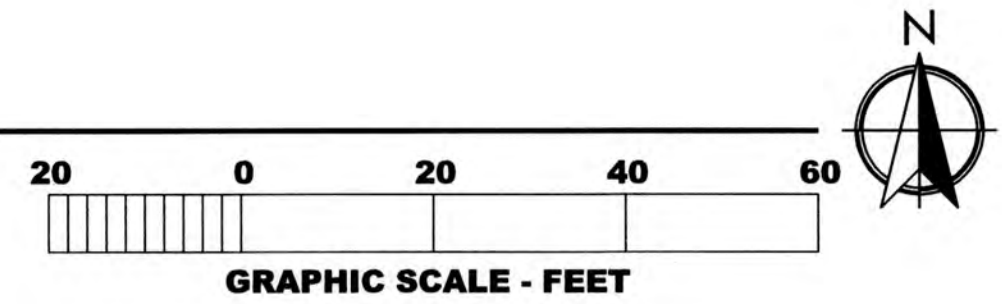


RECEIVED
OCT 10 2018
1736 EAST SUNSHINE, SUITE 417
SPRINGFIELD, MO



1 SITE DEMOLITION PLAN

D1.1 SCALE: 1" = 20'-0"



GENERAL NOTES

- A REFER TO PROJECT MANUAL FOR ADDITIONAL REQUIREMENTS.
- B SITE CONDITIONS BASED UPON SURVEY PROVIDED BY OWNER. FIELD VERIFY EXISTING CONDITIONS BY DETAILED INSPECTION PRIOR TO SUBMITTING BID AND BEGINNING CONSTRUCTION. NOTIFY ARCHITECT IF EXISTING CONDITIONS DEVIATE SUBSTANTIALLY FROM THOSE INDICATED HEREIN.
- C REMOVE ALL EXISTING SITE CONSTRUCTION AND DELETERIOUS MATERIALS UNLESS OTHERWISE NOTED.
- D EXISTING CONSTRUCTION TO REMAIN TO BE PROTECTED AS REQUIRED. REPLACE AND/OR REPAIR EXISTING CONSTRUCTION DAMAGED DUE TO CONTRACTOR ACTIVITIES.
- E ALL DEMOLITION MATERIALS SHALL BECOME PROPERTY OF CONTRACTOR FOR PROPER DISPOSAL UNLESS OTHERWISE NOTED.
- F EXISTING UNDERGROUND INSTALLATION SUCH AS WATER MAINS, GAS MAINS, SEWERS, TELEPHONE LINES, POWER LINES, AND BURIED STRUCTURES IN THE VICINITY OF THE WORK ARE INDICATED ON THE DRAWINGS ONLY TO THE EXTENT SUCH INFORMATION HAS BEEN MADE AVAILABLE. THERE IS NO GUARANTEE AS TO THE ACCURACY OR COMPLETENESS OF SUCH INFORMATION AND ALL RESPONSIBILITY FOR THE ACCURACY AND COMPLETENESS IS EXPRESSLY DISCLAIMED. GENERALLY SERVICE CONNECTIONS ARE NOT INDICATED ON THE DRAWINGS. CONTRACTOR SHALL BE RESPONSIBLE FOR DISCOVERY OF EXISTING UNDERGROUND INSTALLATIONS IN ADVANCE OF EXCAVATING OR TRENCHING BY CONTRACTING LOCAL UTILITIES.

KEY NOTES

- D1 PROTECT EXISTING IMPROVEMENTS IN PLACE.
- D2 EXISTING CURB AND GUTTER TO BE REMOVED. SAW CUT ASPHALT PAVEMENT 2' OFF FACE OF CURB.
- D3 CONTRACTOR TO COORDINATE WITH UTILITY COMPANY FOR REMOVAL AND RELOCATION OF TRANSFORMER.
- D4 EXISTING 18" RCP TO BE REMOVED

ENVIRONMENTAL GENERAL NOTES

- A AN ENVIRONMENTAL ANALYSIS HAS BEEN PERFORMED ON THE EXISTING SITE. REFER TO PROJECT MANUAL.
- B IF THIS PROJECT CONTAINS HAZARDOUS MATERIALS, CONTRACTOR TO PROVIDE WORK REQUIRED FOR PROPER REMOVAL, HANDLING, AND DISPOSAL PER ENVIRONMENTAL ANALYSIS RECOMMENDATIONS.

SYMBOLS LEGEND

NOTE: REFER TO SURVEY FOR EXISTING CONDITIONS SYMBOLS LEGEND.

- EXISTING CONDITIONS TO REMAIN.
- - - EXISTING CONDITIONS TO BE REMOVED.
- — — PROPERTY LINE
- - - - ADJACENT PROPERTY LINE
- - - - EXISTING EASEMENT

BASIS OF BEARING

BEARINGS ARE BASED ON GRID CENTRAL FOR COLORADO COORDINATE SYSTEM, CENTRAL ZONE, NAD83. LATITUDE = 38°51'57.09193", LONGITUDE = 10°40'53.61704", CONVERGENCE ANGLE = 0°11'59".

PREPARED UNDER THE SUPERVISION OF TAIT & ASSOCIATES, INC.

6143 East County Road 16
Loveland, CO 80537
P: 970/413/1447 F: 970/613/1897
www.tait.com

TAIT
Since 1984

Los Angeles, Boise, Sacramento, Denver, Dallas, Rancho Cucamonga

ALEX HOINE, PE 41703

CRAIG A. SCHNEIDER, AIA
ARCHITECT

1736 East Sunshine, Suite 417
Springfield, Missouri 65804
e-mail: architect@esteryschneider.com

417.862.8588
Fax: 417.862.3265

PROJECT:
**NEW O'REILLY AUTO PARTS STORE
N. MARKSHEFFEL ROAD
COLORADO SPRINGS, CO #11**

SITE DEMOLITION PLAN

O'Reilly AUTO PARTS

CORPORATE OFFICES
233 SOUTH PATTERSON
SPRINGFIELD, MISSOURI 65802
(417) 862-2874 TELEPHONE

COMM # 4369
DATE: 10-11-19
REVISION
DATE:

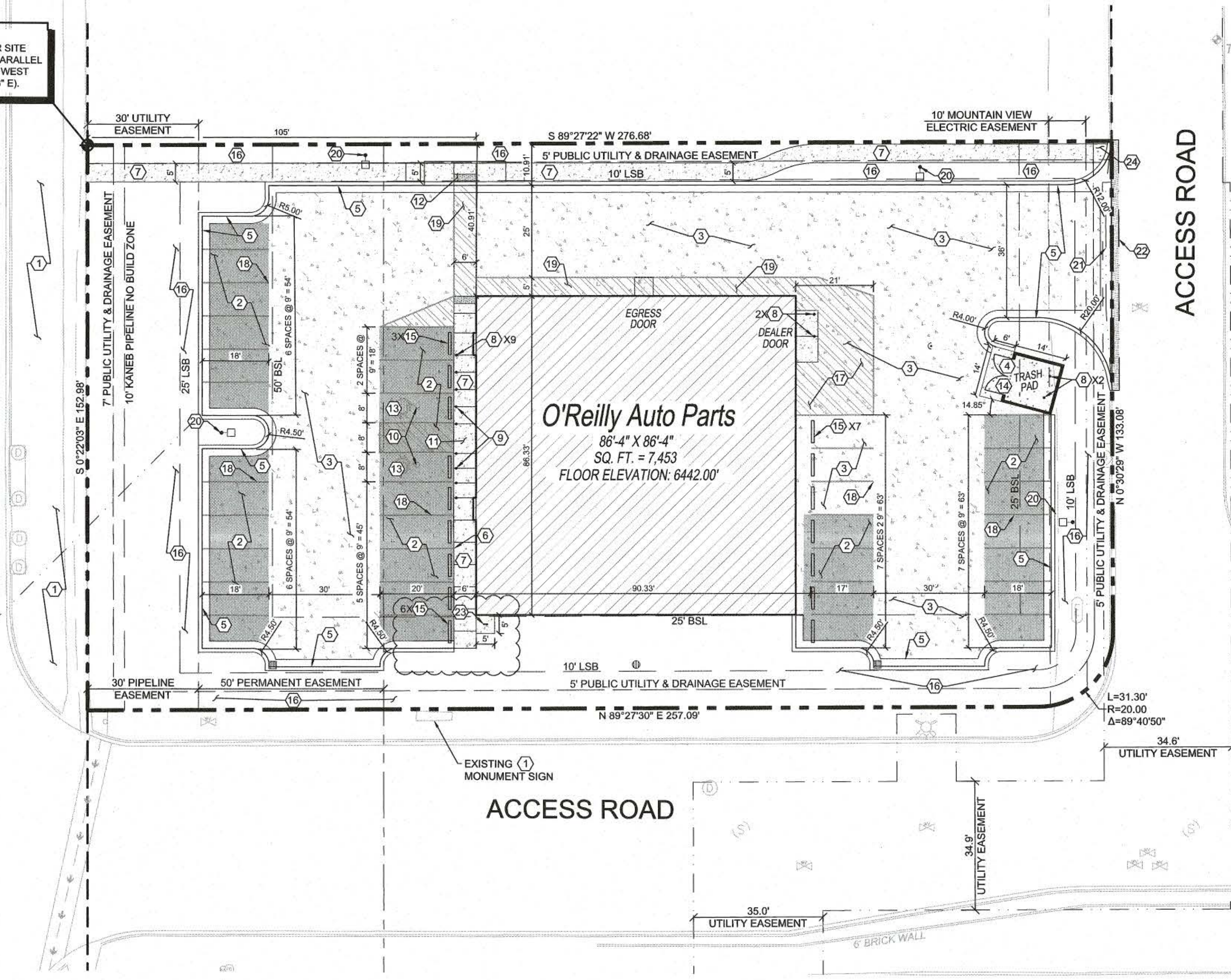
CAUTION:
INFORMATION ON THIS DRAWING CONCERNING TYPE AND LOCATION OF UNDERGROUND AND OTHER UTILITIES IS NOT GUARANTEED TO BE ACCURATE OR ALL INCLUSIVE. THE CONTRACTOR IS RESPONSIBLE FOR MAKING HIS OWN DETERMINATION AS TO THE TYPE AND LOCATION OF UNDERGROUND AND OTHER UTILITIES AS MAY BE NECESSARY TO AVOID DAMAGE THERETO.



**Know what's below
Call before you dig.**

SPECIAL NOTE:
POINT OF BEGINNING FOR SITE DEVELOPMENT LAYOUT PARALLEL AND PERPENDICULAR TO WEST PROPERTY LINE (S 0°22'03" E).

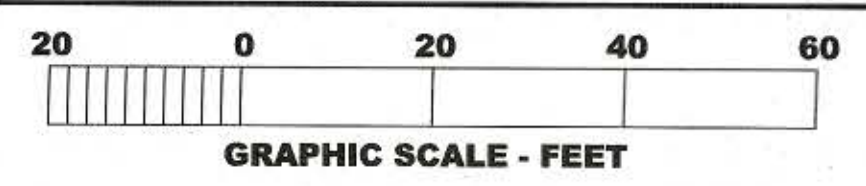
MARKSHEFFEL ROAD



ACCESS ROAD

1 SITE DEVELOPMENT PLAN

C2.1 SCALE: 1" = 20'-0"



KEY NOTES

- 1 PROTECT EXISTING IMPROVEMENTS IN PLACE.
- 2 CONCRETE PAVING (LIGHT DUTY) AT PARKING AREAS AS SHOWN HEREON, REFER TO DETAIL 1/C2.2.
- 3 CONCRETE PAVING (MEDIUM DUTY) AT DRIVE AREAS, DRIVE APRONS, PARKING AREAS, AND FIRE LANES AS SHOWN HEREON, REFER TO DETAIL 2/C2.2.
- 4 CONCRETE PAVING (TRASH PAD) AT REFUSE AREA, REFER TO DETAIL 3/C2.2.
- 5 CONCRETE CURB, REFER TO DETAIL 4/C2.2.
- 6 CONCRETE SIDEWALK CURB, REFER TO DETAIL 5/C2.2. REFER TO SHEET C1.1 FOR ELEVATIONS.
- 7 CONCRETE SIDEWALK, REFER TO DETAIL 6/C2.2. REFER TO STRUCTURAL DRAWINGS FOR LAYOUT OF CONTROL AND EXPANSION JOINTS ADJACENT TO BUILDING PERIMETER.
- 8 STEEL BOLLARD, REFER TO DETAIL 7/C2.2. PROVIDE (2) AT REFUSE CONTAINER AREA, (2) AT SECTIONAL OVERHEAD FREIGHT DOOR, AND (9) AT FRONT ENTRY. REFER TO STRUCTURAL DRAWINGS FOR LAYOUT OF BOLLARDS ADJACENT TO BUILDING PERIMETER.
- 9 HANDICAP PARKING SIGN, REFER TO DETAIL 11/C2.2.
- 10 ACCESSIBLE PARKING SYMBOL PAVEMENT STRIPING, REFER TO DETAIL 8/C2.2.
- 11 ACCESSIBLE AISLE TRANSITION, REFER TO DETAIL 9/C2.2.
- 12 ACCESSIBLE CONCRETE CURB RAMP, REFER TO DETAIL 10/C2.2.
- 13 ACCESSIBLE PARKING SPACE WITH ACCESS AISLE (ADA COMPLIANT) NOT TO EXCEED 2% SLOPE MAXIMUM IN ANY DIRECTION. PROVIDE PAVEMENT MARKINGS TO MATCH STRIPING COLOR UNLESS OTHERWISE REQUIRED TO COMPLY WITH GOVERNING ACCESSIBILITY REGULATIONS.
- 14 TRASH ENCLOSURE, REFER TO DETAILS ON SHEET C2.3.
- 15 CONCRETE BUMPER BLOCK (8" W X 5" H X 6'-0" LONG) ANCHORED TO PAVING WITH (2) 1'-6" LONG #4 REBAR.
- 16 LANDSCAPING. SEE LANDSCAPING PLANS FOR ADDITIONAL INFORMATION.
- 17 STRIPED LOADING ZONE PROVIDE 4" STRIPING AS SHOWN. USE HIGHWAY MARKING PAINT - YELLOW (2 COATS).
- 18 4" WIDE PAVEMENT STRIPING AS SHOWN USING HIGHWAY MARKING PAINT - YELLOW (2 COATS).
- 19 STRIPED PEDESTRIAN PATH PROVIDE 4" STRIPING AS SHOWN. USE HIGHWAY MARKING PAINT - YELLOW (2 COATS).
- 20 PARKING LOT LIGHTING, REFER TO UTILITIES SITE PLAN FOR TYPE AND CONSTRUCTION.
- 21 3" CROSS PAN PER EL PASO COUNTY DOT STANDARD DRAWING SD_2-28, REFER TO SHEET C1.1 FOR ELEVATIONS.
- 22 SAWCUT 2" OFF EDGE OF CONCRETE.
- 23 INSTALL INVERTED "U" BIKE RACK. REFER TO DETAIL 12/C2.2.
- 24 PROPOSED SIDEWALK CONNECTION TO ADJACENT PROPERTY

GENERAL NOTES

- A REFER TO PROJECT MANUAL FOR ADDITIONAL REQUIREMENTS. ALL ON SITE CONCRETE TO BE 4,000 PSI.
- B SITE DIMENSIONS TO FACE OF CONCRETE FOUNDATION, SIDEWALK, CURB GUTTER LINE, PROPERTY LINE, OR CENTER LINE OF STRIPING UNLESS OTHERWISE NOTED.
- C COORDINATE WORK WITH OTHER SITE RELATED DEVELOPMENT DRAWINGS.
- D REFER TO STRUCTURAL DRAWINGS FOR BUILDING DIMENSIONS AND LAYOUT OF SIDEWALKS ADJACENT TO BUILDING PERIMETER.
- E PRIOR TO INSTALLATION, CONTRACTOR TO VERIFY LOCATIONS OF LIGHT POLES, LANDSCAPING, AND UTILITIES DO NOT CONFLICT WITH SITE SIGN LOCATION SHOWN. IF CONFLICT IS DISCOVERED, CONTRACTOR TO NOTIFY OWNER'S REPRESENTATIVE PRIOR TO PROCEEDING WITH THE WORK.

ZONING CODE

ZONING CLASSIFICATION:	COMMERCIAL REGIONAL
PROPERTY AREA:	21,678 SQ. FT.
PAVEMENT AREA:	18,888 SQ. FT.
PARKING SUMMARY	
PARKING FORMULA:	1 SP. PER 250 SQ. FT. GFA
SPACE SIZE:	9' x 18'
SPACES REQUIRED:	30
SPACES PROVIDED (PROPOSED):	35
H.C. SPACES PROVIDED:	2
BICYCLE PARKING REQUIRED:	1.5
BICYCLE PARKING PROVIDED:	2

SYMBOLS LEGEND

- NOTE: REFER TO SURVEY FOR EXISTING CONDITIONS SYMBOLS LEGEND.
- NEW BUILDING CONSTRUCTION
 - HEAVY DUTY CONCRETE
 - STANDARD DUTY CONCRETE
 - NEW CONCRETE PAVING BLOCK
 - NEW LIGHT POLE LOCATION
 - PROPERTY LINE
 - ADJACENT PROPERTY LINE

BASIS OF BEARING

BEARINGS ARE BASED ON GRID CENTRAL FOR COLORADO COORDINATE SYSTEM, CENTRAL ZONE, NAD83. LATITUDE = 38°51'57.09193", LONGITUDE = 10°40'53.61704", CONVERGENCE ANGLE = 0°11'59".

ADA NOTE

THE PARTIES RESPONSIBLE FOR THIS PLAN HAVE FAMILIARIZED THEMSELVES WITH ALL CURRENT ACCESSIBILITY CRITERIA AND SPECIFICATIONS AND THE PROPOSED PLAN REFLECTS ALL SITE ELEMENTS REQUIRED BY THE APPLICABLE ADA DESIGN STANDARDS AND GUIDELINES AS PUBLISHED BY THE UNITED STATES DEPARTMENT OF JUSTICE. APPROVAL OF THIS PLAN BY EL PASO COUNTY DOES NOT ASSURE COMPLIANCE WITH THE ADA OR ANY REGULATIONS OR GUIDELINES ENACTED OR PROMULGATED UNDER OR WITH RESPECT TO SUCH LAWS.

PREPARED UNDER THE SUPERVISION OF TAIT & ASSOCIATES, INC.

6163 East County Road 16
Loveland, CO 80537
P: 970/613/1447 F: 970/613/1897
www.tait.com

TAIT
Since 1964

Los Angeles Sacramento
Denver Rancho Cucamonga

ALEX HOIME, PE #1703

CRAIG A. SCHNEIDER, AIA
ARCHITECT

1736 East Sunshine, Suite 417
Springfield, Missouri 65804
e-mail: architect@craftschneider.com

417-862-0558
417-862-3265

PROJECT:
NEW O'REILLY AUTO PARTS STORE
N. MARKSHEFFEL ROAD
COLORADO SPRINGS, CO #11
SITE DEVELOPMENT PLAN

O'Reilly AUTO PARTS

CORPORATE OFFICES
SOUTH PATERSON
SPRINGFIELD, MISSOURI 65802
(417) 862-2674 TELEPHONE

COMM #	4369
DATE:	10-11-19
REVISION	
DATE:	02-26-2020

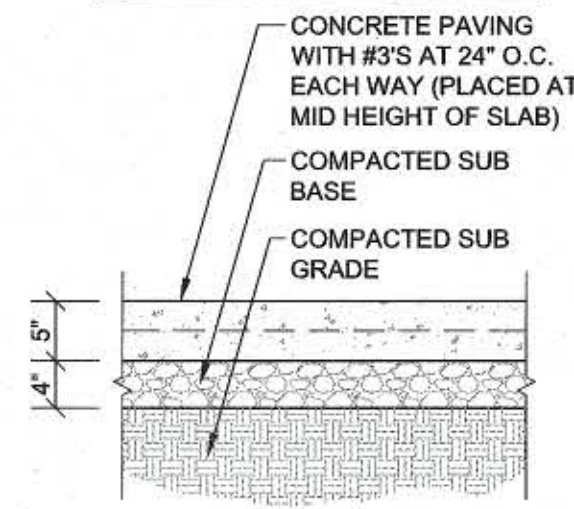
CAUTION:
INFORMATION ON THIS DRAWING CONCERNING TYPE AND LOCATION OF UNDERGROUND AND OTHER UTILITIES IS NOT GUARANTEED TO BE ACCURATE OR ALL INCLUSIVE. THE CONTRACTOR IS RESPONSIBLE FOR MAKING HIS OWN DETERMINATION AS TO THE TYPE AND LOCATION OF UNDERGROUND AND OTHER UTILITIES AS MAY BE NECESSARY TO AVOID DAMAGE THERE TO.



**Know what's below
Call before you dig.**

C2.1

PROVIDE CONTROL JOINTS AT 12'-0" O.C. (25% SLAB THICKNESS)

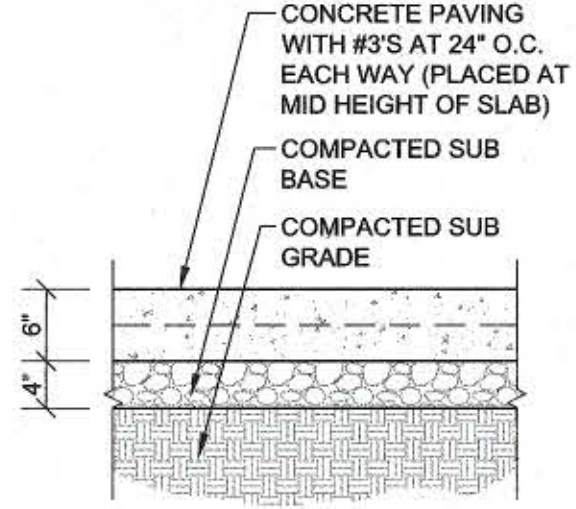


**PAVEMENT DESIGN IS BASED ON GEOTECHNICAL REPORT FROM TERRACON PROVIDED BY THE OWNER DATED 09/20/2019. CONTRACTOR IS RESPONSIBLE TO FULLY READ AND FOLLOW THE RECOMMENDATIONS OF THE PROJECT GEOTECHNICAL REPORT.

1 CONCRETE (LIGHT DUTY) PAVING SECTION

C2.2 SCALE: 3/4" = 1'-0"

PROVIDE CONTROL JOINTS AT 12'-0" O.C. (25% SLAB THICKNESS)

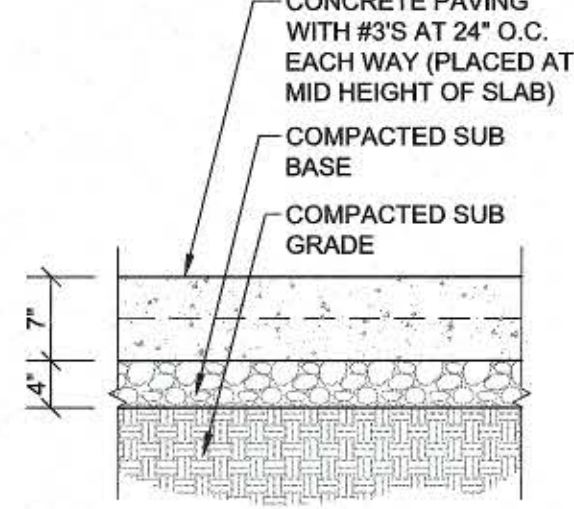


**PAVEMENT DESIGN IS BASED ON GEOTECHNICAL REPORT FROM TERRACON PROVIDED BY THE OWNER DATED 09/20/2019. CONTRACTOR IS RESPONSIBLE TO FULLY READ AND FOLLOW THE RECOMMENDATIONS OF THE PROJECT GEOTECHNICAL REPORT.

2 CONCRETE (MEDIUM DUTY) PAVING SECTION

C2.2 SCALE: 3/4" = 1'-0"

PROVIDE CONTROL JOINTS AT 12'-0" O.C. (25% SLAB THICKNESS)

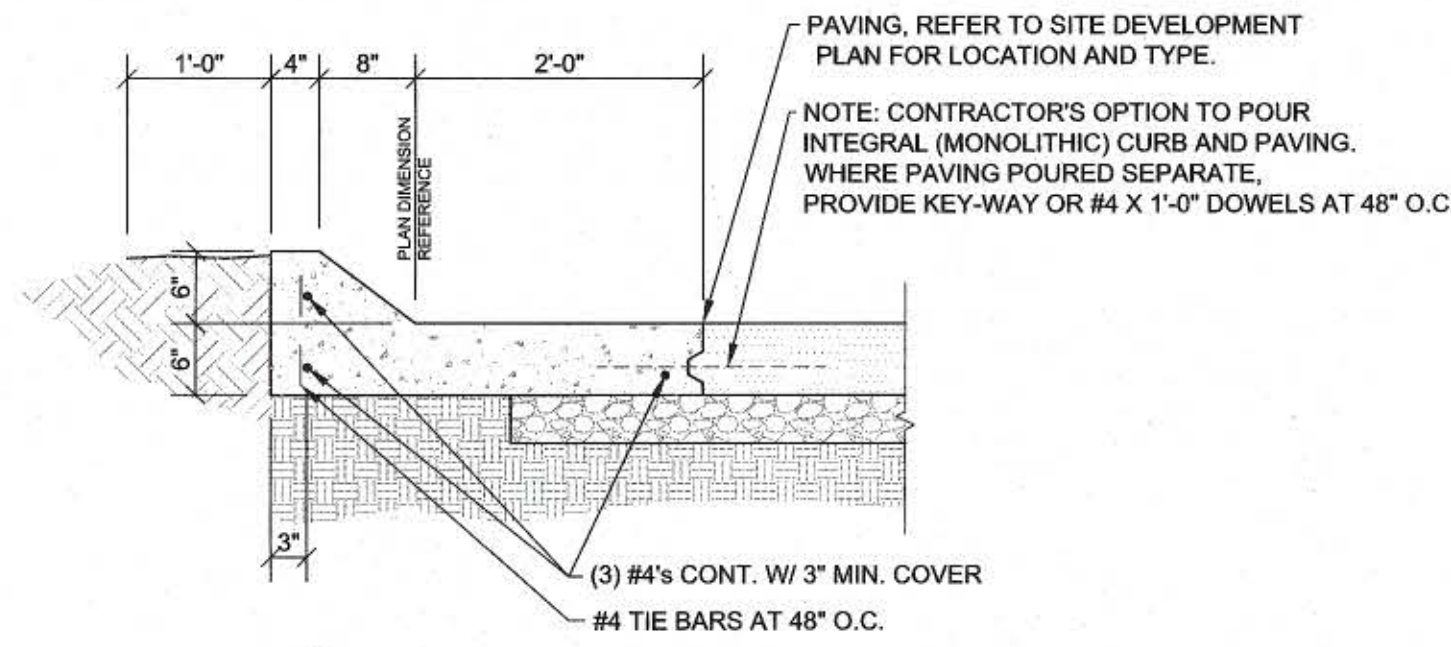


**PAVEMENT DESIGN IS BASED ON GEOTECHNICAL REPORT FROM TERRACON PROVIDED BY THE OWNER DATED 09/20/2019. CONTRACTOR IS RESPONSIBLE TO FULLY READ AND FOLLOW THE RECOMMENDATIONS OF THE PROJECT GEOTECHNICAL REPORT.

3 CONCRETE (HEAVY DUTY) PAVING SECTION

C2.2 SCALE: 3/4" = 1'-0"

PROVIDE CONTROL JOINTS AT 10'-0" O.C. (25% SLAB THICKNESS)



PAVING, REFER TO SITE DEVELOPMENT PLAN FOR LOCATION AND TYPE.

NOTE: CONTRACTOR'S OPTION TO POUR INTEGRAL (MONOLITHIC) CURB AND PAVING. WHERE PAVING POURED SEPARATE, PROVIDE KEY-WAY OR #4 X 1'-0" DOWELS AT 48" O.C.

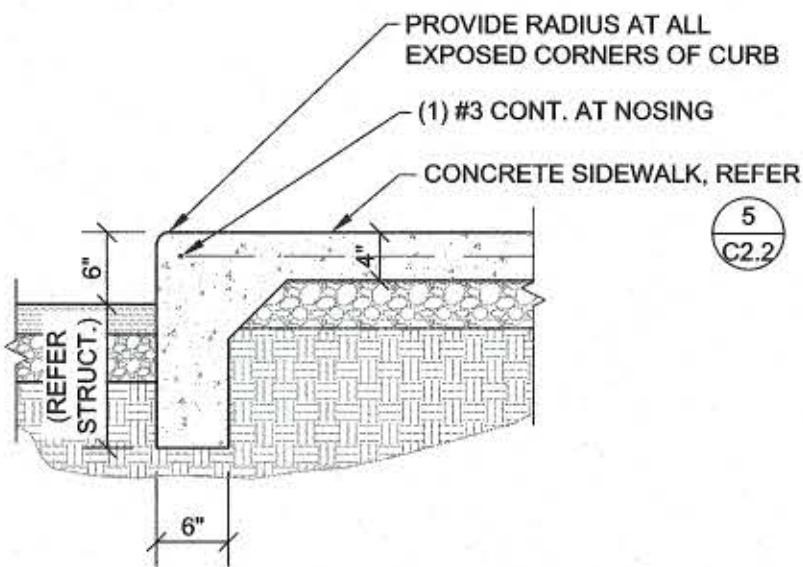
4 CONCRETE CURB SECTION

C2.2 SCALE: 3/4" = 1'-0"

GENERAL NOTES

- (A) REFER TO PROJECT MANUAL FOR ADDITIONAL REQUIREMENTS.
- (B) DIMENSIONS ARE TO ROUGH FACE OF CONCRETE, FRAMING, OR CENTER LINE OF STRUCTURE UNLESS OTHERWISE INDICATED.
- (C) REFER TO CIVIL DRAWINGS FOR ADDITIONAL REQUIREMENTS.
- (D) REFER TO ARCHITECTURAL EXTERIOR FINISH SCHEDULE FOR ADDITIONAL MATERIAL TYPES, COLORS, AND FINISHES.

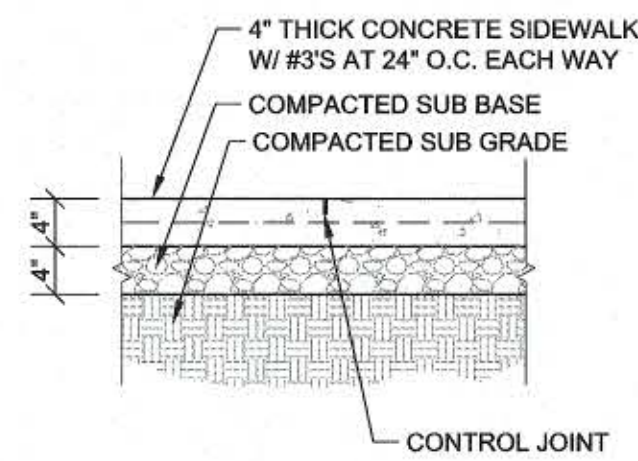
NOTE: REFER TO SITE GRADING PLAN FOR ELEVATIONS OF PAVEMENT ADJACENT TO SIDEWALKS.



5 CONCRETE SIDEWALK CURB SECTION

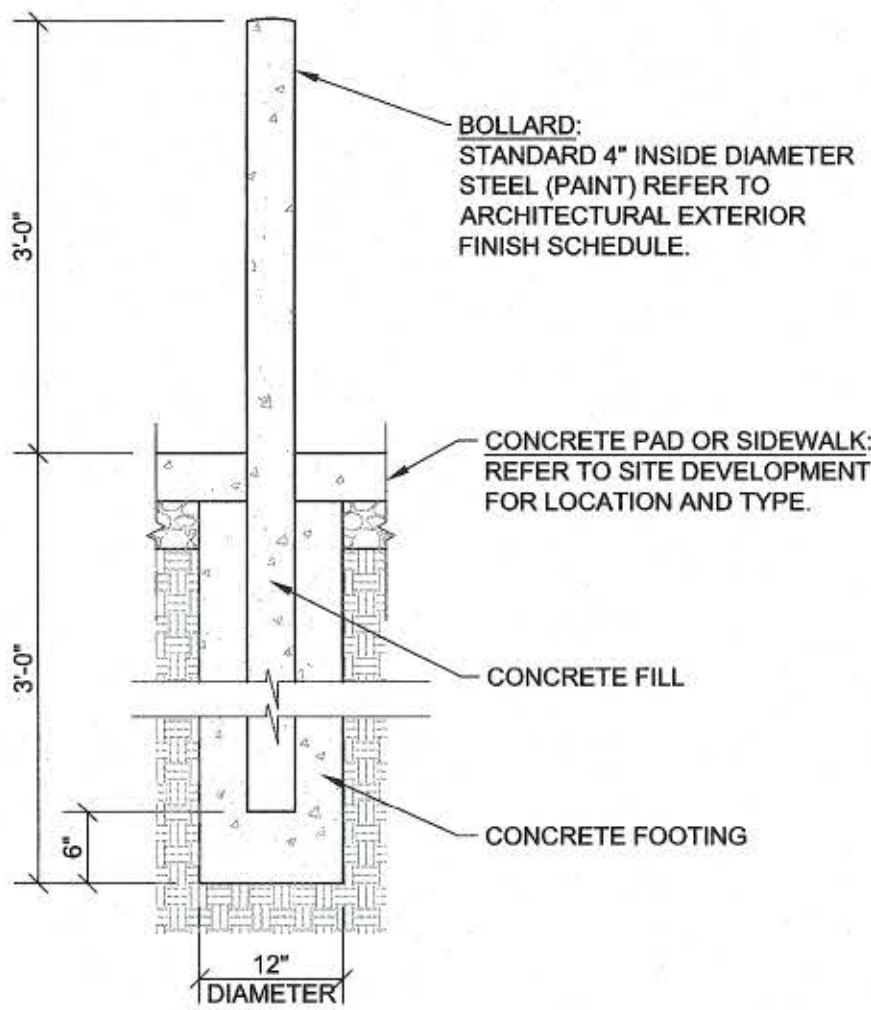
C2.2 SCALE: 3/4" = 1'-0"

PROVIDE TOOLED CONTROL JOINTS AT 6' O.C. (25% SLAB THICKNESS) AND ISOLATION JOINTS AT 24' O.C., UNLESS OTHERWISE NOTED.



6 CONCRETE SIDEWALK SECTION

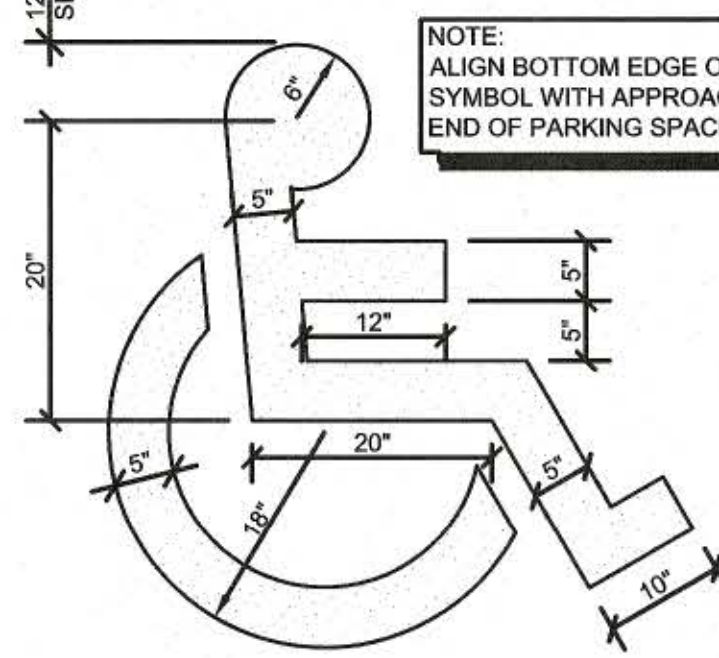
C2.2 SCALE: 3/4" = 1'-0"



7 STEEL BOLLARD SECTION

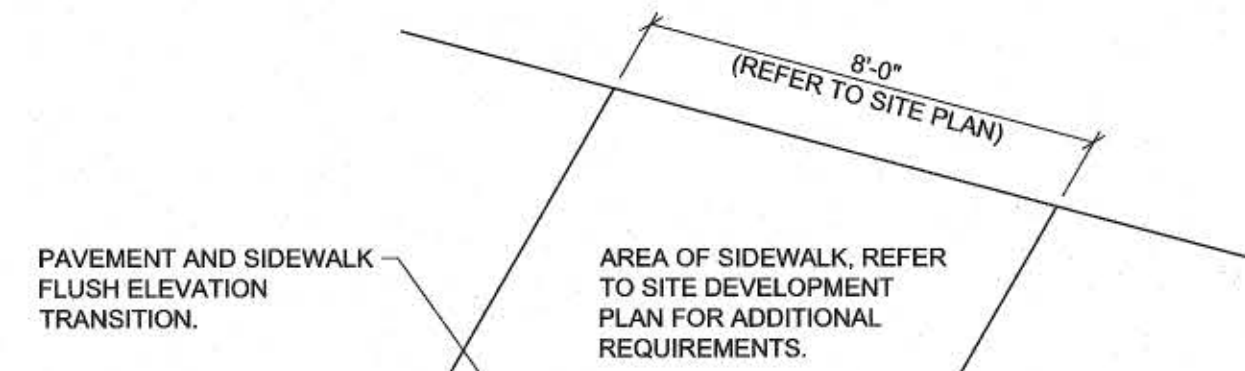
C2.2 SCALE: 3/4" = 1'-0"

NOTE: SYMBOL TO BE PAINTED (HIGHWAY GRADE) OR DECAL ADHERED TO PAVEMENT. COLOR TO MATCH STRIPING UNLESS OTHERWISE REQUIRED BY LOCAL ACCESSIBILITY STANDARDS.



8 ACCESSIBLE PARKING PAVEMENT STRIPING DETAIL

C2.2 SCALE: 3/4" = 1'-0"

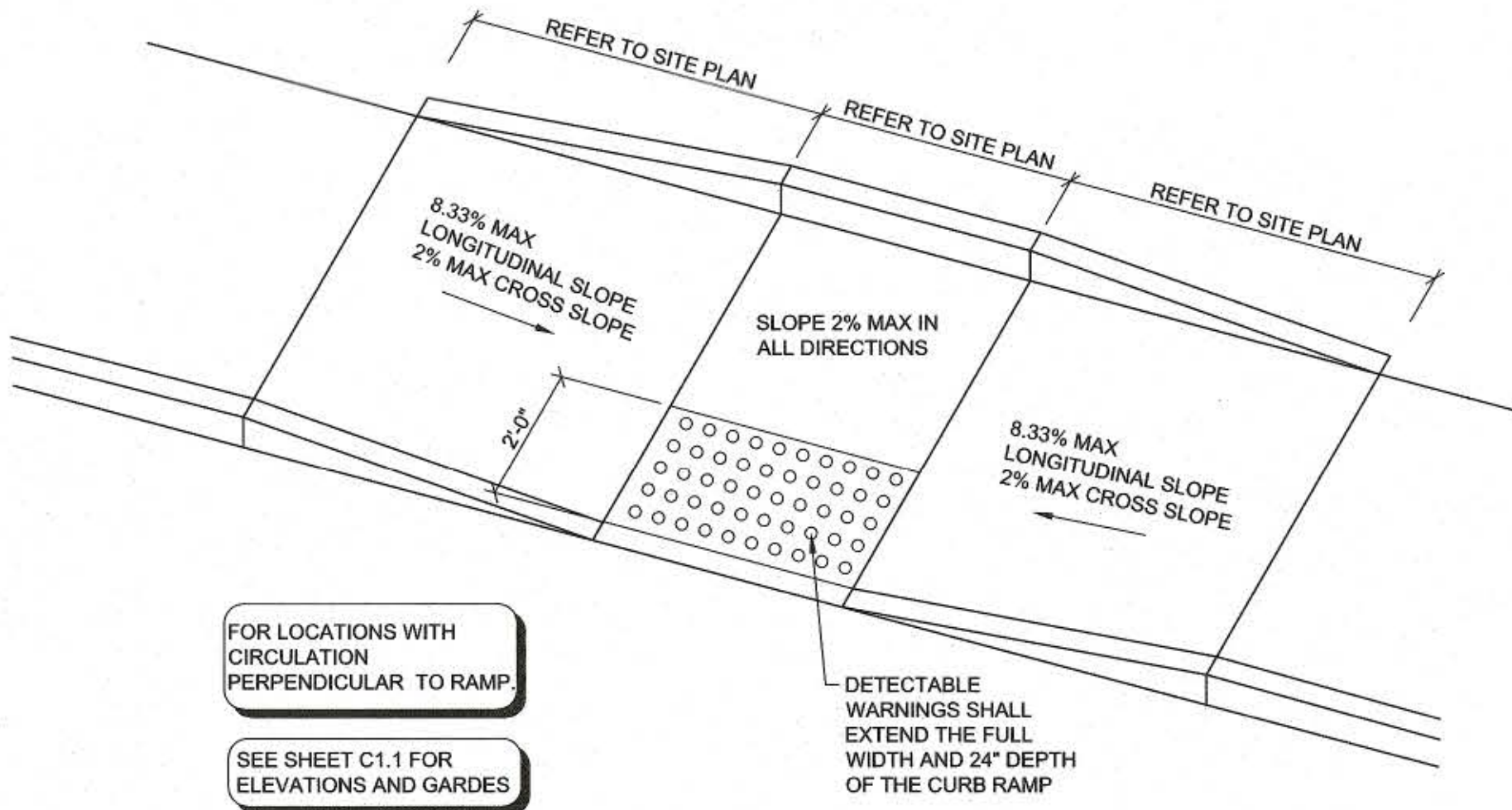


FOR LOCATIONS WITH CIRCULATION PERPENDICULAR TO RAMP.

AREA OF ACCESSIBLE AISLE AND PARKING PAVEMENT, REFER TO SITE DEVELOPMENT PLAN FOR ADDITIONAL REQUIREMENTS.

9 ACCESSIBLE AISLE TRANSITION DETAIL

C2.2 SCALE: (NOT TO SCALE)

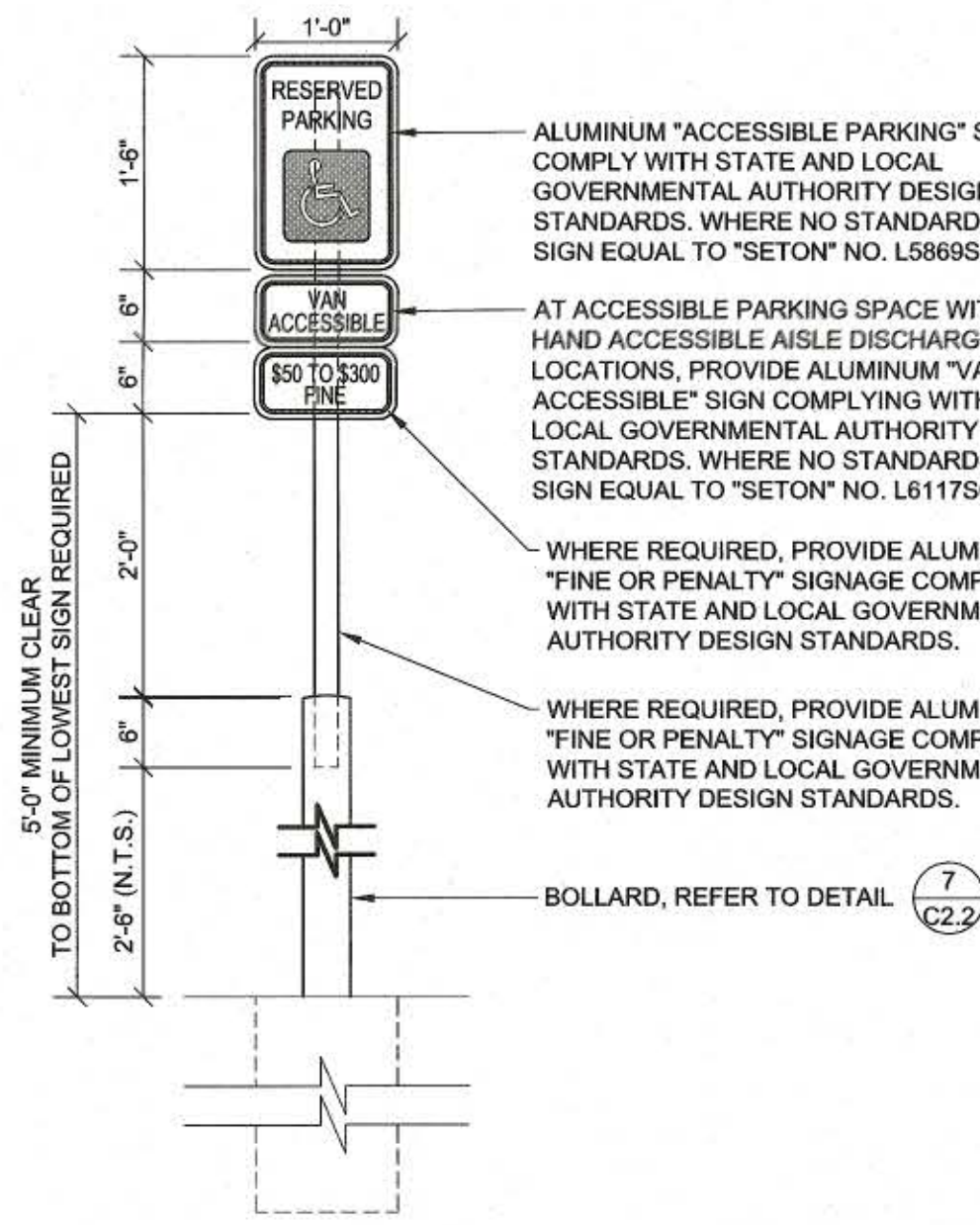


FOR LOCATIONS WITH CIRCULATION PERPENDICULAR TO RAMP
SEE SHEET C1.1 FOR ELEVATIONS AND GARDES

DETECTABLE WARNINGS SHALL EXTEND THE FULL WIDTH AND 24" DEPTH OF THE CURB RAMP

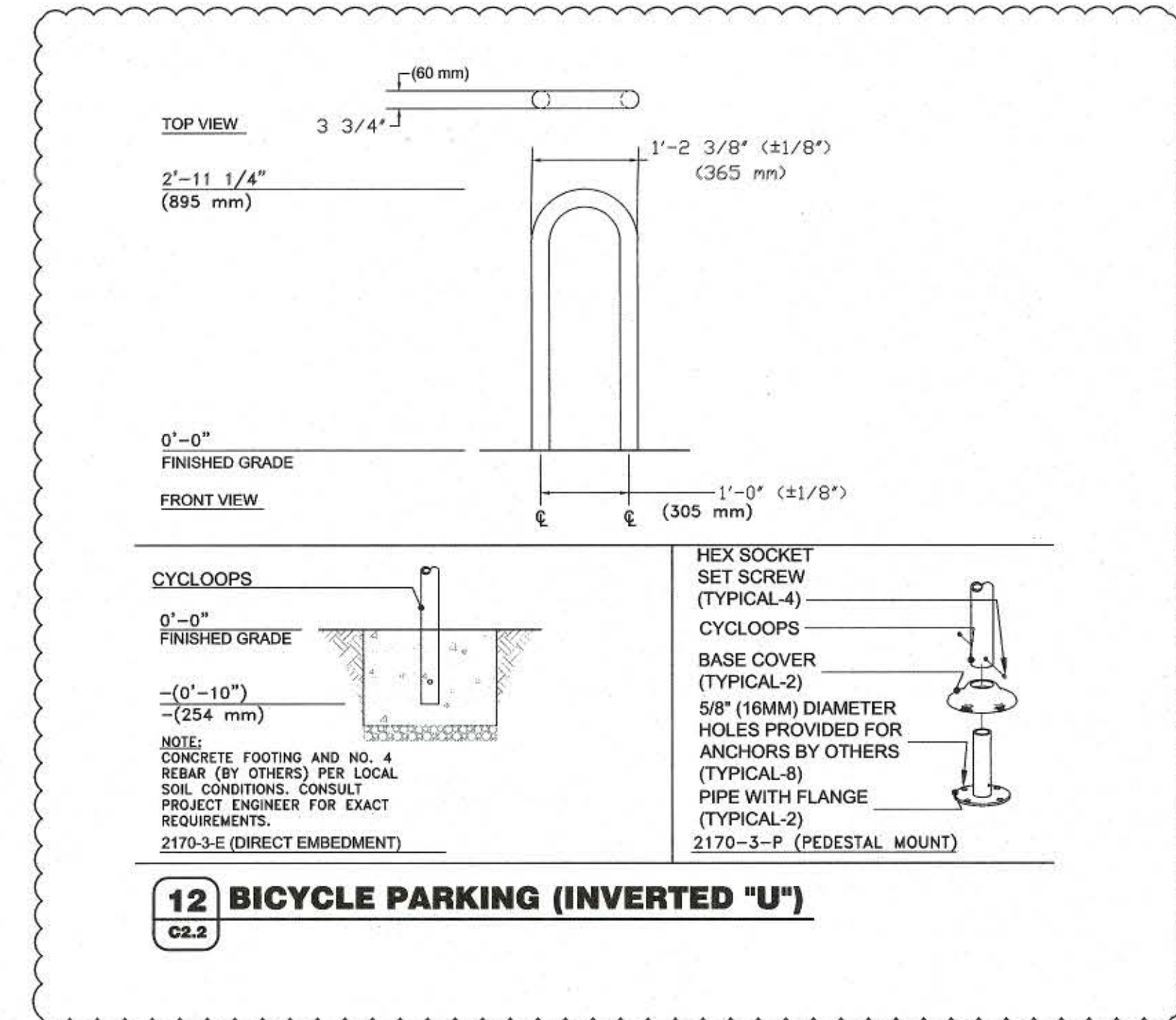
10 CONCRETE SIDEWALK CURB RAMP DETAIL

C2.2 SCALE: (NOT TO SCALE)



11 HANDICAP PARKING SIGN DETAIL

C2.2 SCALE: 3/4" = 1'-0"



12 BICYCLE PARKING (INVERTED "U")

C2.2

PREPARED UNDER THE SUPERVISION OF TAIT & ASSOCIATES, INC.

TAIT
Since 1984

6163 East County Road 16
Loveland, CO 80537
p: 970/613/1477 f: 970/613/1897
www.tait.com

Los Angeles, Boise, Sacramento, Denver, Dallas, Rancho Cucamonga

ALEX HOME, PE 41703

CRAIG A. SCNEIDER, AIA
ARCHITECT

1736 East Sunshine, Suite 417
Springfield, Missouri 65804
e-mail: architect@caterlyschneider.com

417.862.0558
Fax: 417.862.3265

PROJECT:
NEW O'REILLY AUTO PARTS STORE
N. MARKSHEFFEL ROAD
COLORADO SPRINGS, CO #11

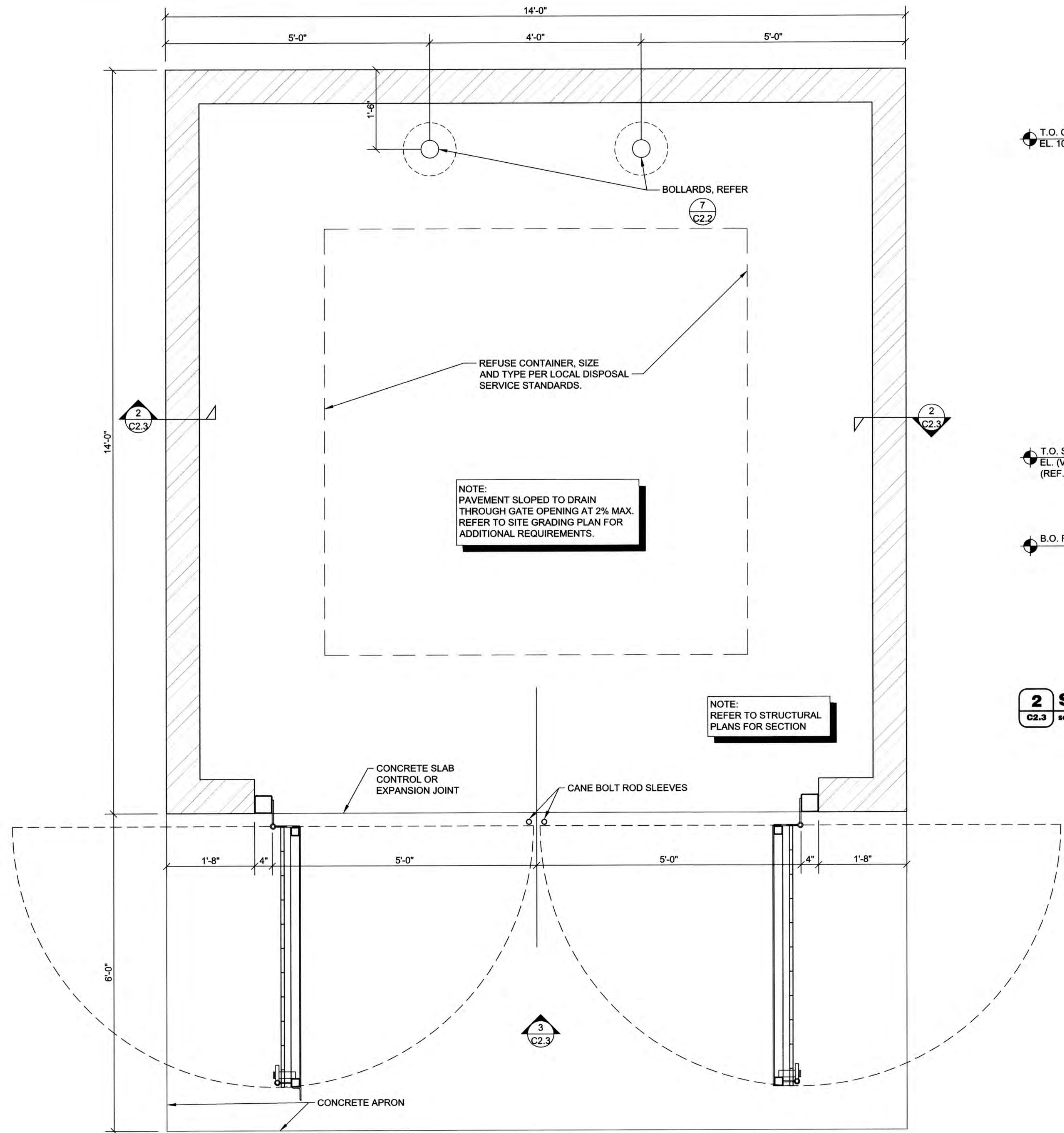
SITE DETAILS

O'Reilly AUTO PARTS

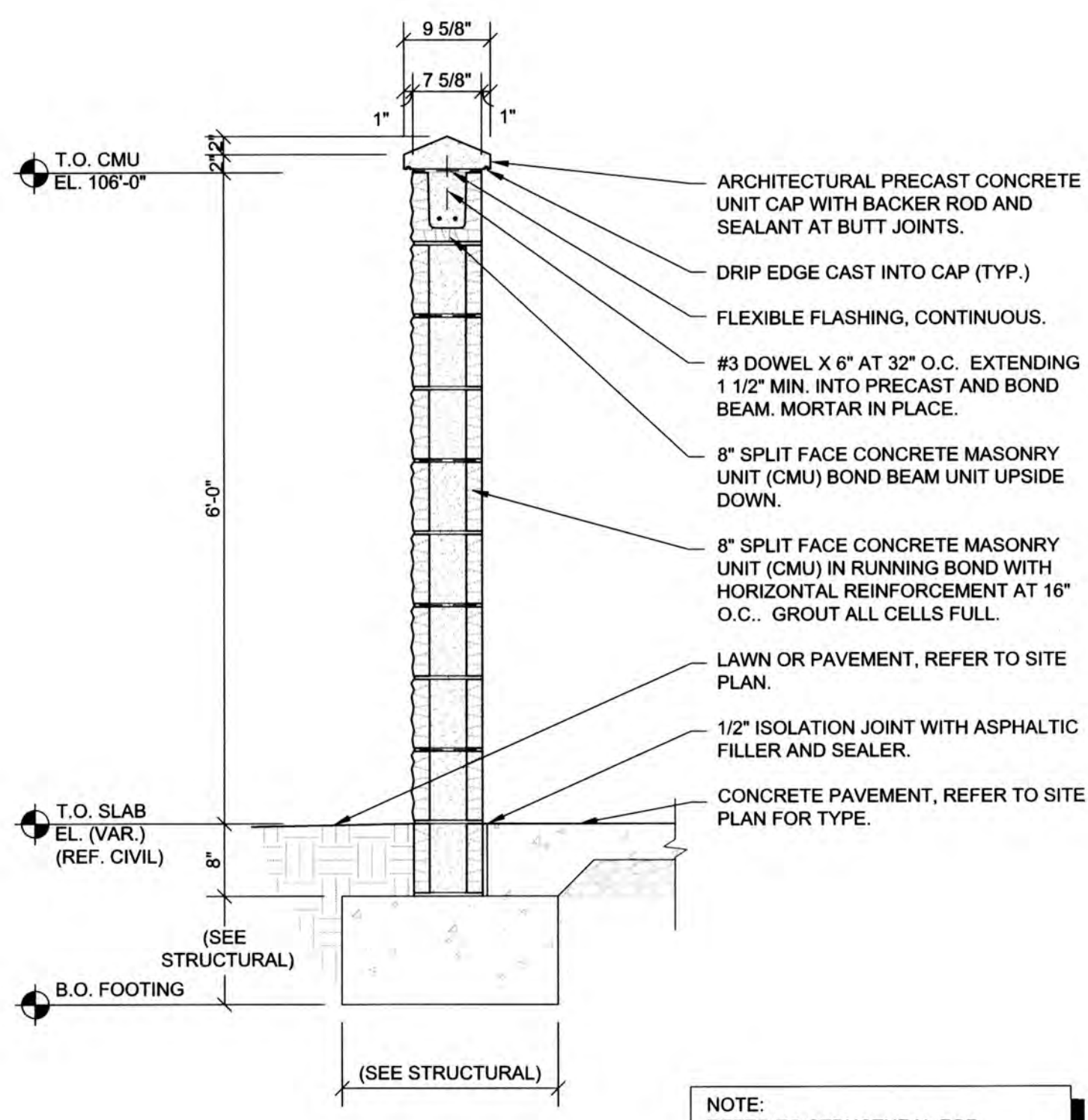
CORPORATE OFFICES
233 SOUTH PATTERSON
SPRINGFIELD, MISSOURI 65802
(417) 862-2674 TELEPHONE

COMM #	4369
DATE:	10-11-19
REVISION	
DATE:	02-26-2020

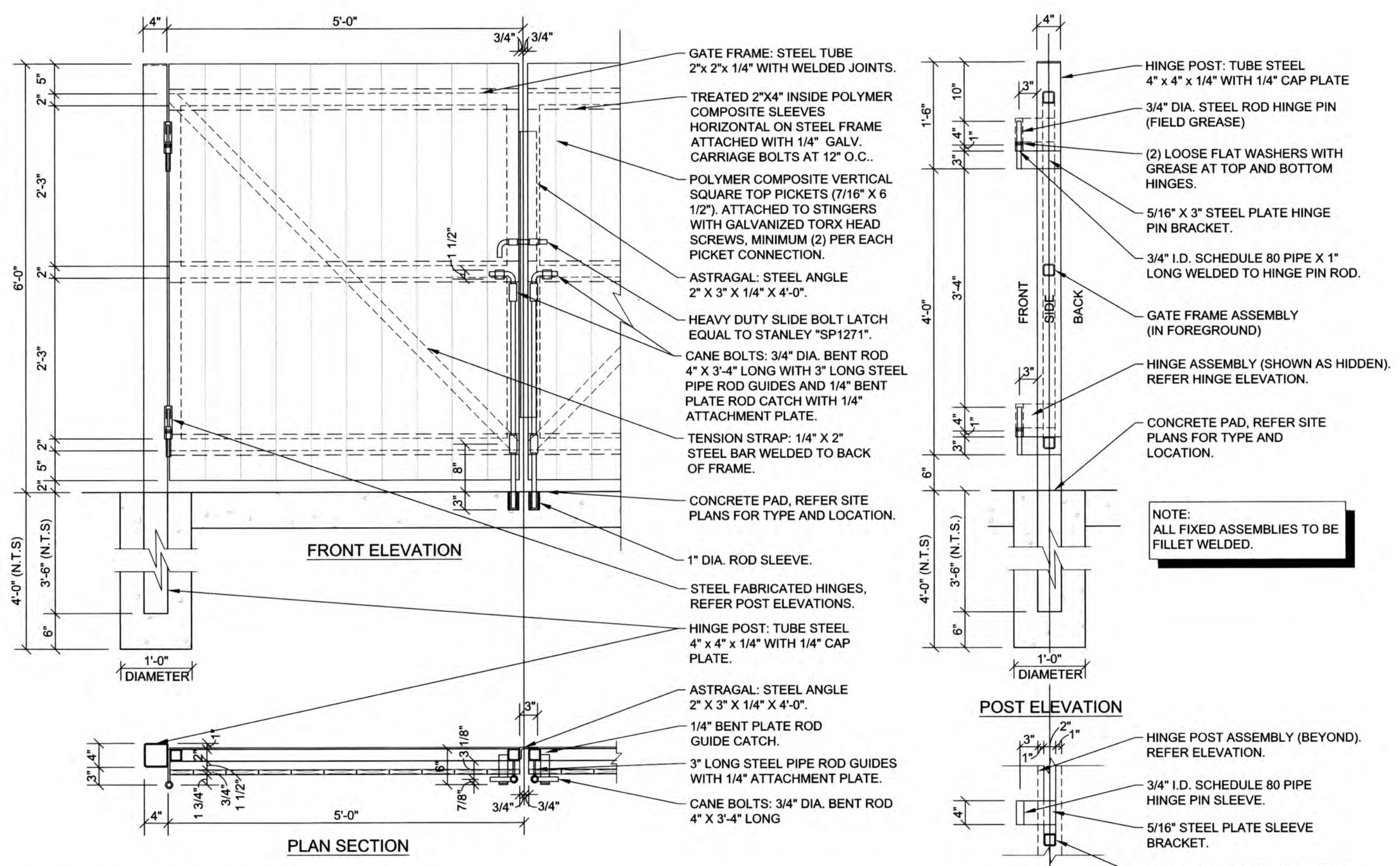
RECEIVED
OCT 10 2019
1736 E SUNSHINE ST. SUITE 417
SPRINGFIELD, MO



1 MASONRY SCREEN FENCE REFUSE ENCLOSURE PLAN
C2.3 SCALE: 3/4" = 1'-0"



2 SCREEN FENCE SECTION
C2.3 SCALE: 3/4" = 1'-0"



3 SCREEN FENCE GATE DETAIL
C2.3 SCALE: 3/4" = 1'-0"

GENERAL NOTES

- (A) REFER TO PROJECT MANUAL FOR ADDITIONAL REQUIREMENTS.
- (B) DIMENSIONS ARE TO ROUGH FACE OF CONCRETE, MASONRY, FRAMING, OR CENTER LINE OF STRUCTURE UNLESS OTHERWISE INDICATED.
- (C) REFER TO CIVIL AND STRUCTURAL DRAWINGS FOR ADDITIONAL REQUIREMENTS.
- (D) REFER TO ARCHITECTURAL EXTERIOR FINISH SCHEDULE FOR MATERIAL TYPES, COLORS, AND FINISHES. UNLESS OTHERWISE INDICATED PROVIDE FINISHES AS FOLLOWS:
 1. ALL MASONRY SURFACES TO MATCH TEXTURES AND FIELD COLOR OF BUILDING. EXPOSED MASONRY INSIDE ENCLOSURE TO BE PRIMED AND PAINTED (2) COATS OF COLOR TO MATCH ENCLOSURE EXTERIOR MASONRY.
 2. ALL EXPOSED ARCHITECTURAL PRECAST TO BE NATURAL CONCRETE COLOR IN SMOOTH FORM FINISH.
 3. ALL NON-GALVANIZED METAL PARTS TO BE PRIMED AND PAINTED (2) COATS SHERWIN WILLIAMS SW6468 "HUNT CLUB".
 4. POLYMER COMPOSITE MATERIAL COLOR TO BE EQUAL TO FIBERON "COASTAL CEDAR", "JATOPA", OR "CEDAR". FINAL COLOR TO BE SELECTED FROM MANUFACTURER'S STANDARD SAMPLES.

PREPARED UNDER THE SUPERVISION OF TAIT & ASSOCIATES, INC.

6163 East County Road 16
Loveland, CO 80537
P: 970/413/1447 F: 970/613/1897
www.tait.com

TAIT
Since 1944

Los Angeles, Boise, Sacramento, Denver, Dallas, Rancho Cucamonga

ALEX HONIE, PE 41703

CRAIG A. SCHNEIDER, AIA
ARCHITECT

1736 East Sunshine, Suite 417
Springfield, Missouri 65804
417.962.0558
Fax: 417.962.3265
e-mail: architect@esteryschneider.com

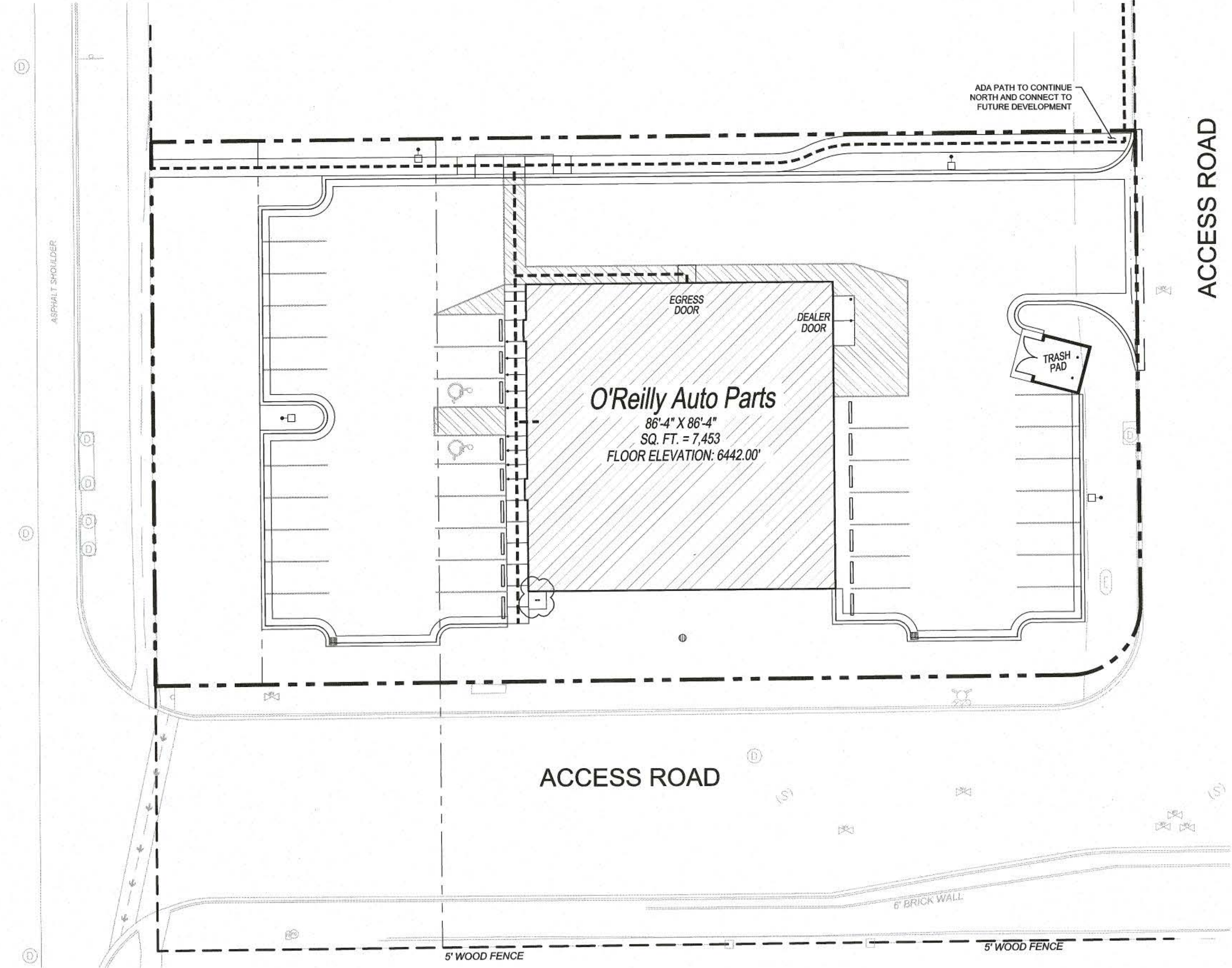
PROJECT:
NEW O'REILLY AUTO PARTS STORE
N. MARKSHEFFEL ROAD
COLORADO SPRINGS, CO #11
REFUSE ENCLOSURE

O'Reilly AUTO PARTS
CORPORATE OFFICES
233 SOUTH PATTERSON
SPRINGFIELD, MISSOURI 65802
(417) 862-2674 TELEPHONE

COMM #	4369
DATE:	10-11-19
REVISION	
DATE:	

MARKSHEFFEL ROAD

1 ADA ROUTE PLAN
C2.4 SCALE: 1" = 20'-0"



SYMBOLS LEGEND

NOTE: REFER TO SURVEY FOR EXISTING CONDITIONS SYMBOLS LEGEND.

- NEW BUILDING CONSTRUCTION
- AREA OF CONCRETE
- NEW MONUMENT SIGN LOCATION
- NEW CONCRETE PAVING BLOCK
- NEW LIGHT POLE LOCATION
- PROPERTY LINE
- ADJACENT PROPERTY LINE
- ACCESSIBLE ROUTE

ADA NOTE

THE PARTIES RESPONSIBLE FOR THIS PLAN HAVE FAMILIARIZED THEMSELVES WITH ALL CURRENT ACCESSIBILITY CRITERIA AND SPECIFICATIONS AND THE PROPOSED PLAN REFLECTS ALL SITE ELEMENTS REQUIRED BY THE APPLICABLE ADA DESIGN STANDARDS AND GUIDELINES AS PUBLISHED BY THE UNITED STATES DEPARTMENT OF JUSTICE. APPROVAL OF THIS PLAN BY EL PASO COUNTY DOES NOT ASSURE COMPLIANCE WITH THE ADA OR ANY REGULATIONS OR GUIDELINES ENACTED OR PROMULGATED UNDER OR WITH RESPECT TO SUCH LAWS.



PREPARED UNDER THE SUPERVISION OF TAIT & ASSOCIATES, INC.

TAIT
Since 1944

6143 East County Road 16
Loveland, CO 80537
P: 970/613/1447 F: 970/613/1897
www.tait.com

Los Angeles Boise Sacramento
Denver Dallas Rancho Cucamonga

ALEX HOWE, PE #1703

CRAIG A. SCHNEIDER, AIA
ARCHITECT

1736 East Sunshine, Suite 417
Springfield, Missouri 65804
417-862-9558
Fax: 417-862-9265
e-mail: architect@estertyschneider.com

PROJECT:
NEW O'REILLY AUTO PARTS STORE
N. MARKSHEFFEL ROAD
COLORADO SPRINGS, CO #11
ADA ROUTE PLAN

O'Reilly AUTO PARTS

CORPORATE OFFICES
233 SOUTH PATTERSON
SPRINGFIELD, MISSOURI 65802
(417) 862-2674 TELEPHONE

COMM #	4369
DATE:	10-11-19
REVISION	
DATE:	02-26-2020

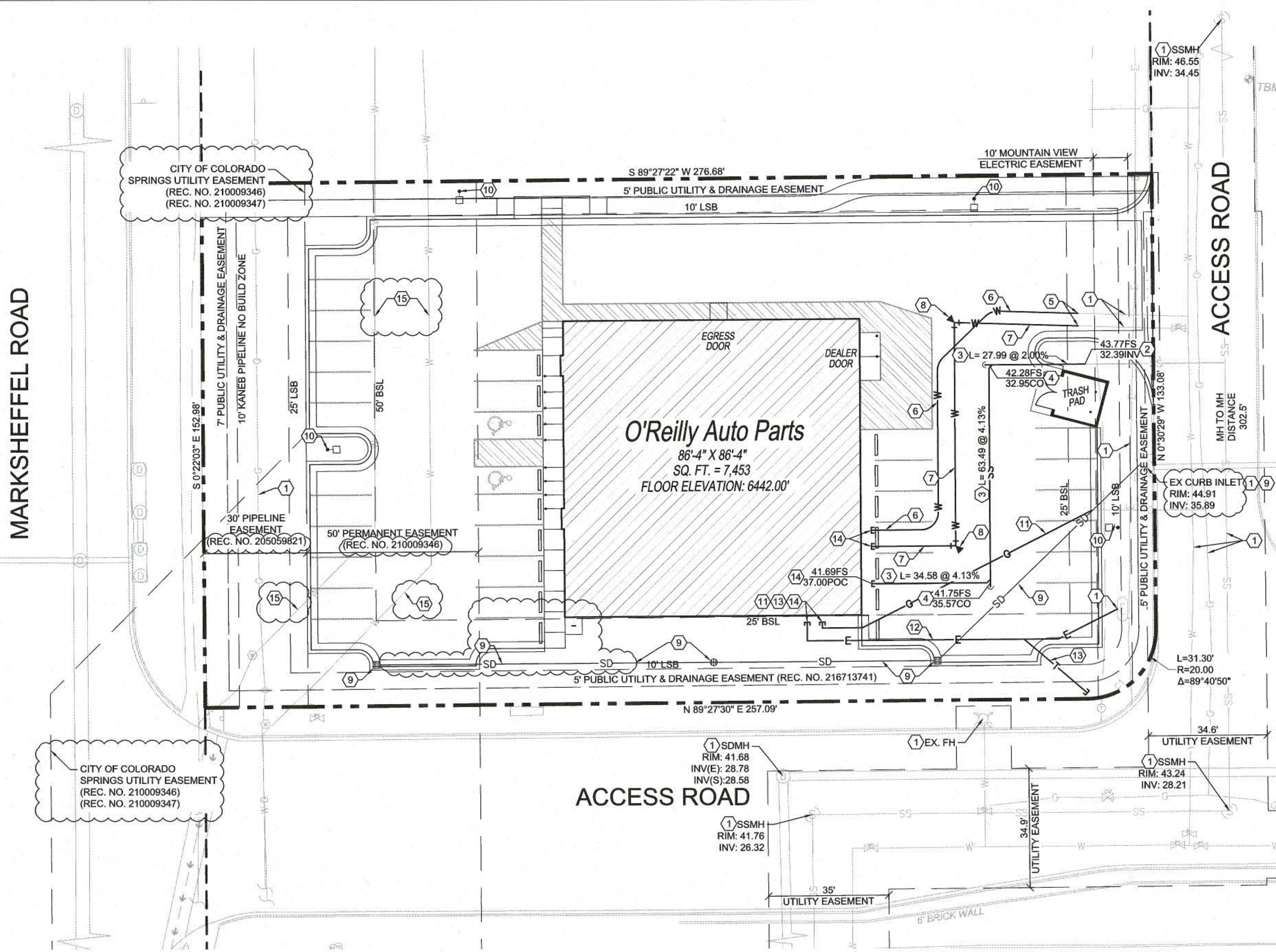
CAUTION:
INFORMATION ON THIS DRAWING CONCERNING TYPE AND LOCATION OF UNDERGROUND AND OTHER UTILITIES IS NOT GUARANTEED TO BE ACCURATE OR ALL INCLUSIVE. THE CONTRACTOR IS RESPONSIBLE FOR MAKING HIS OWN DETERMINATION AS TO THE TYPE AND LOCATION OF UNDERGROUND AND OTHER UTILITIES AS MAY BE NECESSARY TO AVOID DAMAGE THERETO.



**Know what's below
Call before you dig.**

C2.4

MARKSHEFFEL ROAD



1 SITE UTILITY PLAN
 C3.1 SCALE: 1" = 20'-0"

GENERAL NOTES

- CONTRACTOR SHALL COORDINATE WITH ALL UTILITY COMPANIES, USING UTILITY CONTACT INFORMATION GIVEN. COORDINATE FOR ALL UTILITY WORK SHOWN. GIVE UTILITY COMPANIES NOTICE OF CONSTRUCTION START DATE AND ESTIMATED COMPLETION DATE.
- PRIOR TO INSTALLATION, GENERAL CONTRACTOR TO CONFIRM THAT LIGHT POLES, LANDSCAPING AND UTILITIES DO NOT CONFLICT WITH SIGN LOCATION SHOWN. IF ANY POTENTIAL CONFLICT IS DISCOVERED, GENERAL CONTRACTOR TO CONTACT THE O'REILLY PROJECT ADMINISTRATOR BEFORE PROCEEDING.

SAWCUT NOTE

- WHERE NEW UTILITY SERVICES ARE ROUTED UNDER EXISTING PAVED AREAS, ALL EXISTING PAVING SHALL BE REMOVED IN THE FOLLOWING STEPS:
- CALL 811.
 - REMOVAL AND TRENCHING.
 - INSTALLATION OF UTILITY.
 - BACKFILL AND COMPACTION.
 - INSTALLATION OF NEW PAVING THAT MATCHES THE EXISTING SURROUNDING PAVING IN BOTH MATERIAL AND ELEVATION. CONTRACTOR SHALL COORDINATE, OBTAIN AND PAY FOR ALL REQUIRED PERMITS AND LICENSES TO PERFORM THIS WORK AND SHALL BE RESPONSIBLE FOR ALL TRAFFIC CONTROL WHILE PERFORMING SAWCUTTING OPERATIONS AS NECESSARY.

EXISTING CONDITIONS NOTES

- THE CONTRACTOR IS OBLIGATED TO INSPECT FOR EXISTING CONDITIONS/INSTALLATIONS AND AVAILABLE INFORMATION PRIOR TO SUBMITTING A BID, REFER TO SPECIFICATIONS ALSO.
- EXISTING INSTALLATIONS (SUCH AS WATER MAINS LINES, GAS MAINS LINES, SEWER MAINS LINES, TELEPHONE LINES, POWER LINES, AND UTILITY STRUCTURES IN THE VICINITY OF THE WORK TO BE DONE) ARE INDICATED ON THE DRAWINGS ONLY TO THE EXTENT THAT SUCH INFORMATION HAS BEEN MADE AVAILABLE TO OR DISCOVERED BY THE ENGINEER IN PREPARING THE DRAWINGS. THERE IS NO GUARANTEE AS TO THE ACCURACY OR COMPLETENESS OF SUCH INFORMATION, AND ALL RESPONSIBILITY FOR THE ACCURACY AND COMPLETENESS THEREOF IS EXPRESSLY DISCLAIMED.
- THE CONTRACTOR SHALL BE SOLELY RESPONSIBLE FOR LOCATING ALL EXISTING INSTALLATIONS.
- ANY DELAY, ADDITIONAL WORK, FEES OR EXTRA COST TO THE CONTRACTOR CAUSED BY RESULTING FROM DAMAGE TO OR MODIFICATIONS OF EXISTING INSTALLATIONS BY THE CONTRACTOR OR AFFECTED UTILITY COMPANY SHALL NOT CONSTITUTE A CLAIM FOR EXTRA WORK, ADDITIONAL PAYMENT OR DAMAGES.
- THE CONTRACTOR SHALL FIELD VERIFY ALL EXISTING CONSTRUCTION PRIOR TO SUBMITTING HIS BID. NO EXTRAS WILL BE PAID DUE TO UNANTICIPATED EXISTING CONDITIONS / INSTALLATIONS.

SITE UTILITY KEY NOTES

- PROTECT EXISTING IMPROVEMENTS IN PLACE.
- CONNECT TO EXISTING 4" Ø SANITARY SEWER STUB. CONTRACTOR TO FIELD VERIFY HORIZONTAL AND VERTICAL LOCATION PRIOR TO CONSTRUCTION. CONTRACTOR TO NOTIFY ENGINEER OF RECORD OF ANY DISCREPANCIES FROM THIS PLAN.
- 4" Ø PVC SANITARY SEWER INSTALLED PER SLOPES AND INVERTS SHOWN HEREON AND PER COLORADO SPRINGS UTILITIES STANDARDS. 128 LF
- TRAFFIC RATED ELBOW AND CLEAN OUT INSTALLED AT INVERTS SHOWN HEREON AND PER COLORADO SPRINGS UTILITIES STANDARD DETAIL D1-4.
- CONTRACTOR TO FIELD VERIFY AND CONNECT TO EXISTING WATER MAIN STUB
- 1.5" Ø TYPE K COPPER DOMESTIC WATER LINE. 116 LF
- PROVIDE 4" Ø FIRE SPRINKLER SERVICE. SIZE OF FIRE SERVICE AND HYDRAULIC CALCULATIONS TO BE PREPARED AND CONFIRMED BY FIRE SPRINKLER DESIGN CONSULT. 129 LF
- PROVIDE BEND AND THRUST BLOCK AS SHOWN HEREON AND PER COLORADO SPRINGS UTILITIES STANDARD A4-2.
- PROVIDE CATCH BASINS AND STORM DRAIN PER DETAILS AND ELEVATIONS ON SHEET C1.1.
- LIGHT POLE. REFER TO PLANS PREPARED BY MEP.
- PROPOSED GAS SERVICE ALIGNMENT SHOWN FOR REFERENCE ONLY. REFER TO PLANS PREPARED BY MEP FOR INSTALLATION.
- PROPOSED ELECTRICAL SERVICE ALIGNMENT SHOWN FOR REFERENCE ONLY. REFER TO PLANS PREPARED BY MEP FOR INSTALLATION.
- PROPOSED COMMUNICATION SERVICE ALIGNMENT SHOWN FOR REFERENCE ONLY. REFER TO PLANS PREPARED BY MEP FOR INSTALLATION.
- UTILITY CONNECTION AT BUILDING. COORDINATE CONNECTIONS WITH MEP PLANS.
- EXISTING 42" & 54" STEEL PUBLIC WATER MAINS TO REMAIN.

UTILITIES LEGEND

SS	PROPOSED SANITARY SEWER
W	PROPOSED WATER SERVICE
SD	PROPOSED STORM DRAIN SERVICE
E	PROPOSED ELECTRICAL SERVICE
T	PROPOSED TELEPHONE SERVICE
G	PROPOSED GAS SERVICE
SS	EXISTING SANITARY SEWER
W	EXISTING WATER MAIN
FO	EXISTING FIBER OPTIC SERVICE
G	EXISTING GAS MAIN
T	EXISTING TELEPHONE SERVICE
E	EXISTING ELECTRICAL UTILITY
---	PROPERTY LINE
---	EASEMENT LINE
▨	NEW BUILDING CONSTRUCTION
▭	NEW CONCRETE PARKING BLOCK
---	NEW CLEANOUT
+□	NEW LIGHT POLE

UTILITY COMPANY CONTACTS

WATER:	CHEROKEE METROPOLITAN DISTRICT JONATHON SMITH - (719) 597-5080 EXT 112
WASTEWATER:	CHEROKEE METROPOLITAN DISTRICT JONATHON SMITH - (719) 597-5080B EXT 112
ELECTRICITY:	MOUNTAIN VIEW ELECTRIC ASSOCIATION LYNN H. - (719) 495-2283
NATURAL GAS:	COLORADO SPRINGS UTILITIES ENYSHIA ATENCIO - (719) 668-4426
TELEPHONE:	CENTURY LINK (719) 362-5403

BENCHMARK

TEMPORARY BENCHMARK #1: ELEVATION = 6443.54', SET MAG NAIL, N:1377025.58, E:3233108.44.
 TEMPORARY BENCHMARK #2: ELEVATION = 6445.80', SET MAG NAIL, N:1377253.45, E:3233066.72.
 VERTICAL DATUM: BASED ON OPUS SOLUTION DATED 4/30/2019, NAVD88.
 GRADE FLAG ELEVATIONS SHOWN HEREON ARE TRUNCATED BY 6400 FEET.

BASIS OF BEARING

BEARINGS ARE BASED ON GRID CENTRAL FOR COLORADO COORDINATE SYSTEM, CENTRAL ZONE, NAD83. LATITUDE = 38°51'57.09193", LONGITUDE = 10°40'53.61704", CONVERGENCE ANGLE = 0°11'59".

PREPARED UNDER THE SUPERVISION OF TAIT & ASSOCIATES, INC.

6163 East County Road 16
 Loveland, CO 80537
 P: 970.613.1417
 F: 970.613.1897
 www.tait.com

Los Angeles, Boise, Sacramento, Denver, Rancho Cucamonga

TAIT
 Since 1984

CRAIG A. SCHNEIDER, AIA
ARCHITECT
 1736 East Sunshine, Suite 417
 Springfield, Missouri 65804
 e-mail: architect@eaterschneider.com
 417.862.0558
 Fax: 417.862.3265

PROJECT:
NEW O'REILLY AUTO PARTS STORE
N. MARKSHEFFEL ROAD
COLORADO SPRINGS, CO #11
SITE UTILITY PLAN

O'Reilly AUTO PARTS
 CORPORATE OFFICES
 233 SOUTH PATTERSON
 SPRINGFIELD, MISSOURI 65802
 (417) 862-2674 TELEPHONE

COMM #	4369
DATE:	10-11-19
REVISION	
DATE:	02-26-2020

Know what's below
Call before you dig.