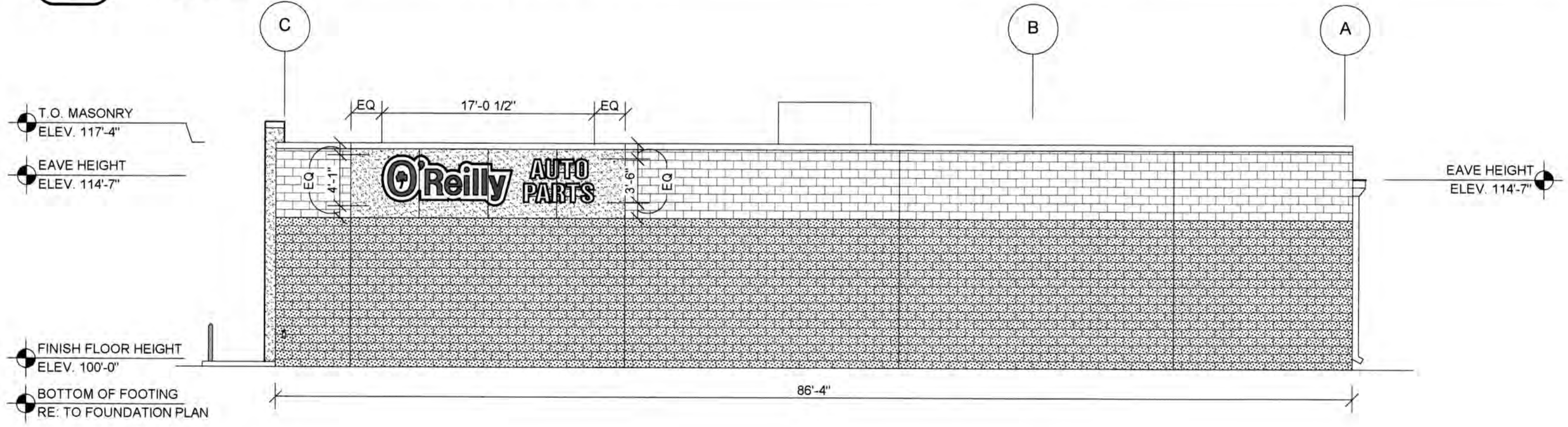


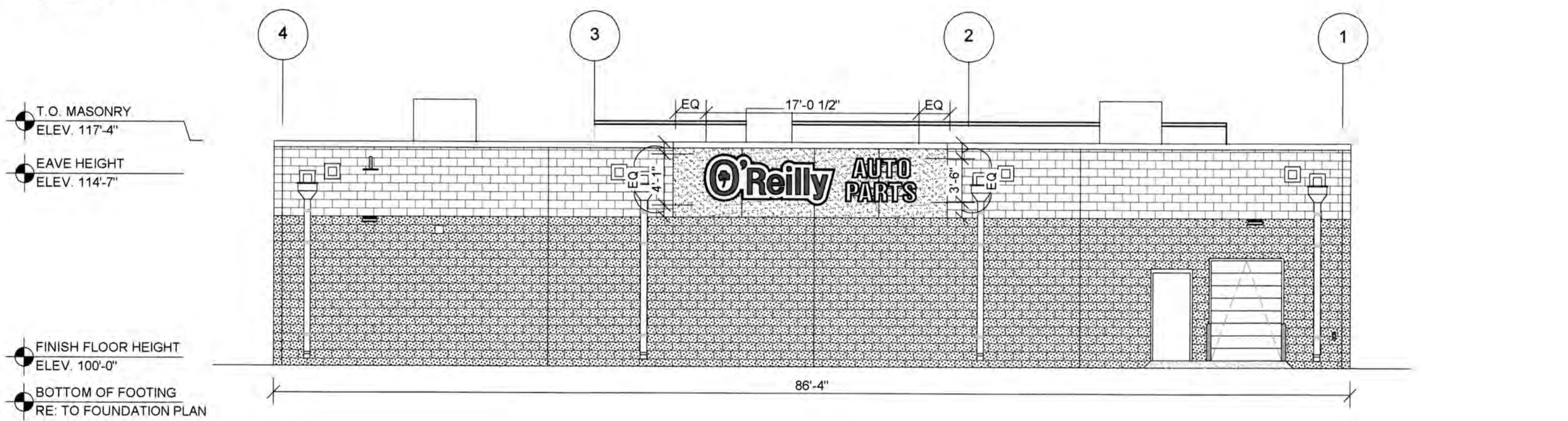
1 FRONT EXTERIOR ELEVATION

SG2.1 SCALE: 1/8" = 1'-0"



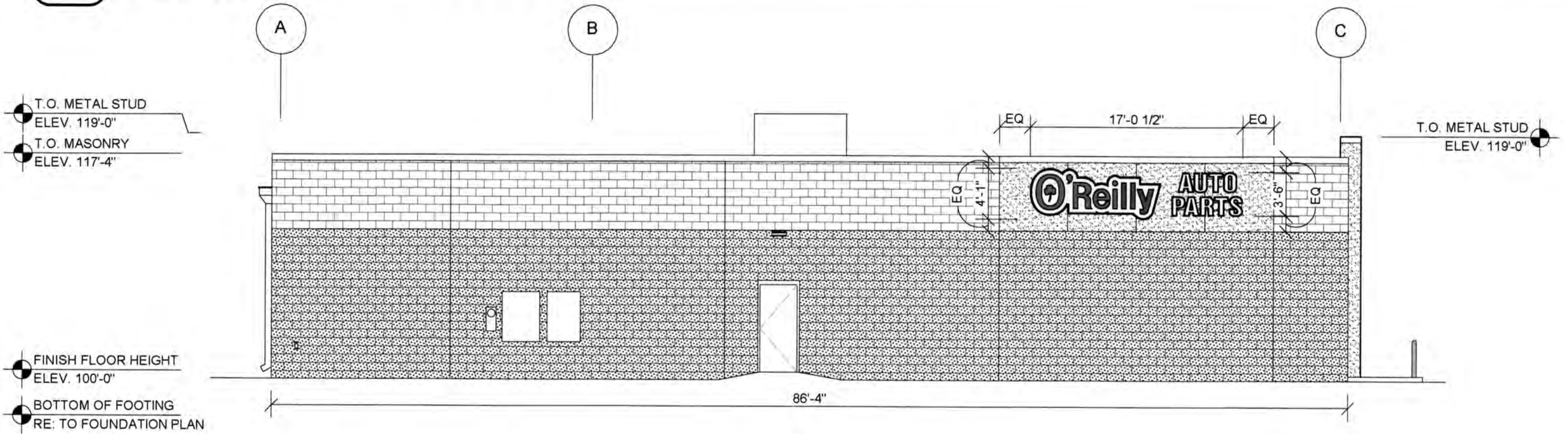
2 RIGHT EXTERIOR ELEVATION

SG2.1 SCALE: 1/8" = 1'-0"



3 REAR EXTERIOR ELEVATION

SG2.1 SCALE: 1/8" = 1'-0"

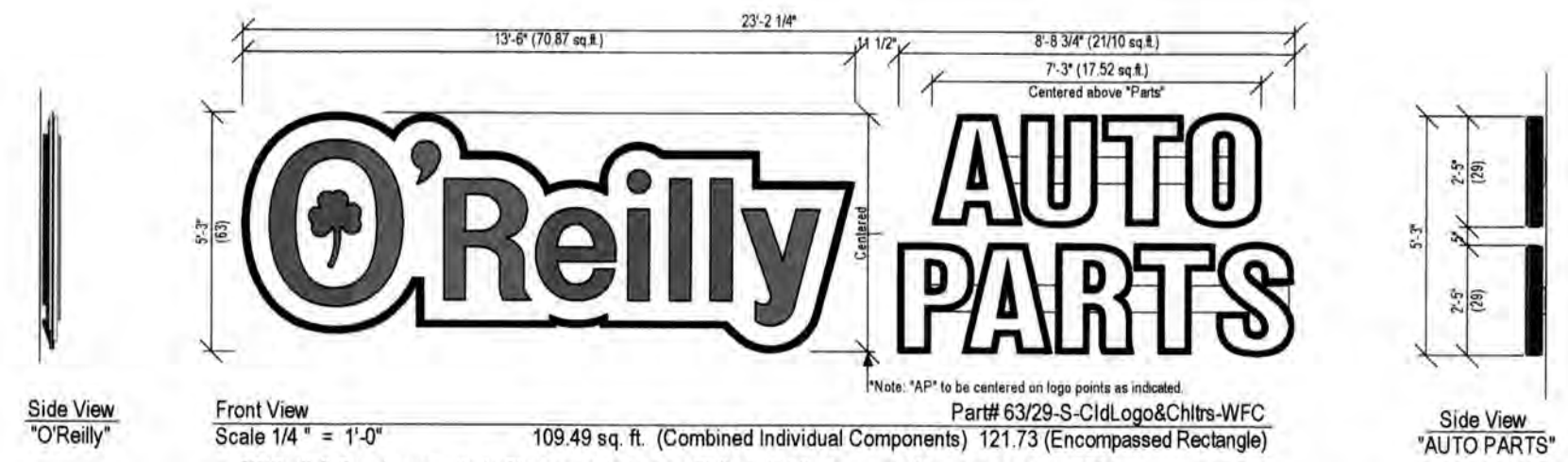


4 LEFT EXTERIOR ELEVATION

SG2.1 SCALE: 1/8" = 1'-0"

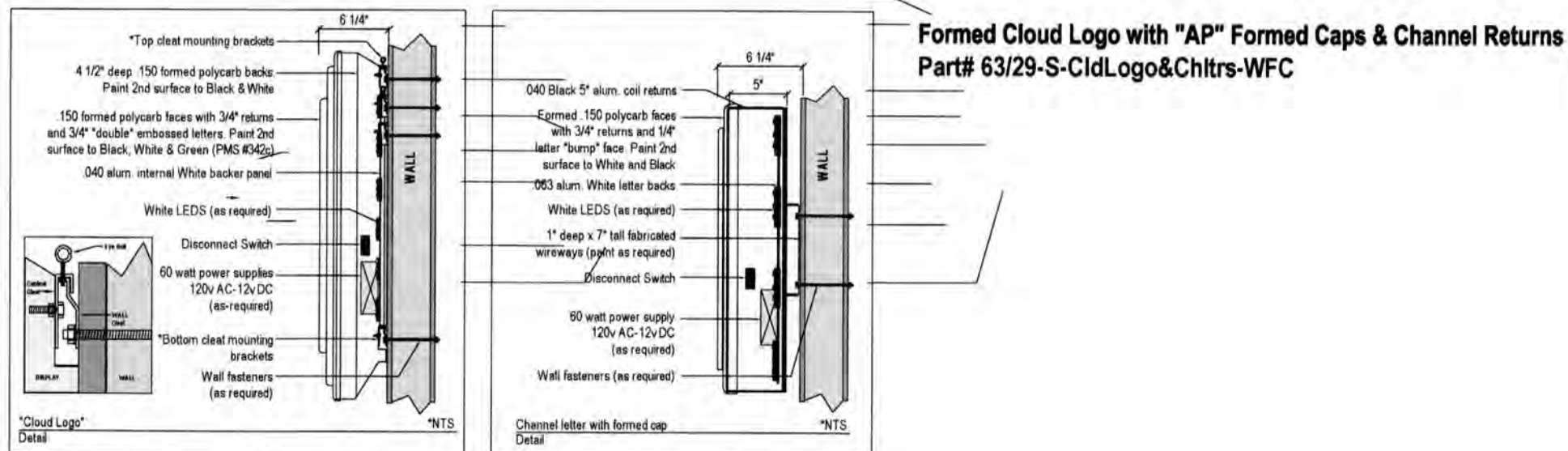
GENERAL NOTES

- A CONTACT OWNER'S OR TENANT'S DESIGNATED PROJECT ADMINISTRATOR FOR QUESTIONS OR CLARIFICATIONS.
- B BUILDING PERMANENT SIGNAGE OWNER FURNISHED AND INSTALLED. (REFER TO SCOPE OF WORK SCHEDULE). SIGNAGE GRAPHICS PROVIDED FOR REFERENCE ONLY (N.I.C.) AND CONTRACTOR'S COORDINATION WITH SPECIFIC PROJECT CONSTRUCTION CONDITIONS. CONTRACTOR TO PROVIDE BACKING AND ROUGH-IN ELECTRICAL AS REQUIRED FOR INSTALLATION. REFER TO A2.1 FOR EXTERIOR BUILDING FINISH.
- C REQUIRED GOVERNMENTAL PERMITS FOR PERMANENT TYPE SIGNAGE TO BE PROVIDED BY OWNER OR OTHERS (N.I.C.).



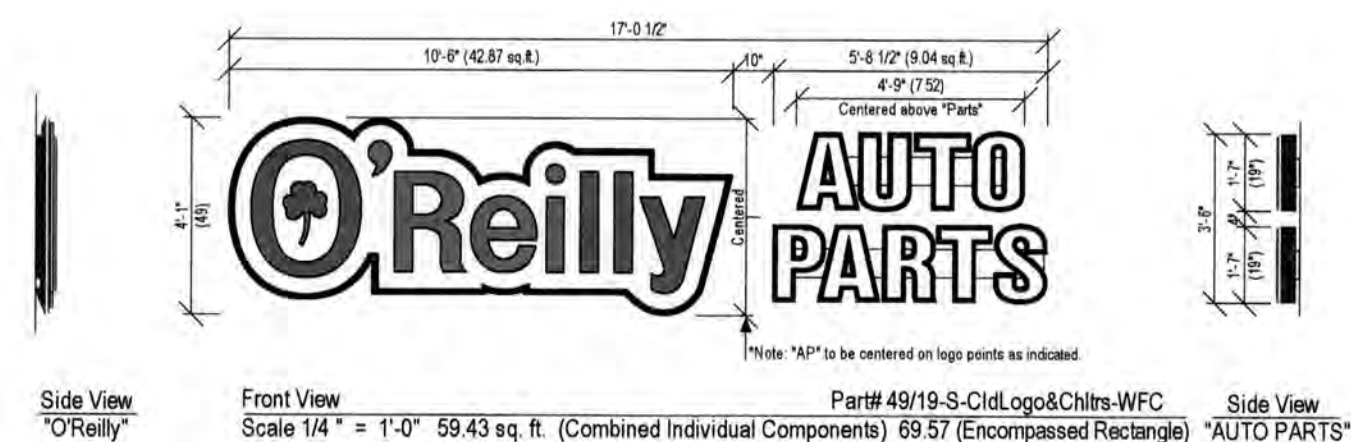
5 FRONT WALL SIGN ELEVATION

SG2.1 SCALE: 1/4" = 1'-0"



6 FRONT WALL SIGN MOUNTING DETAILS

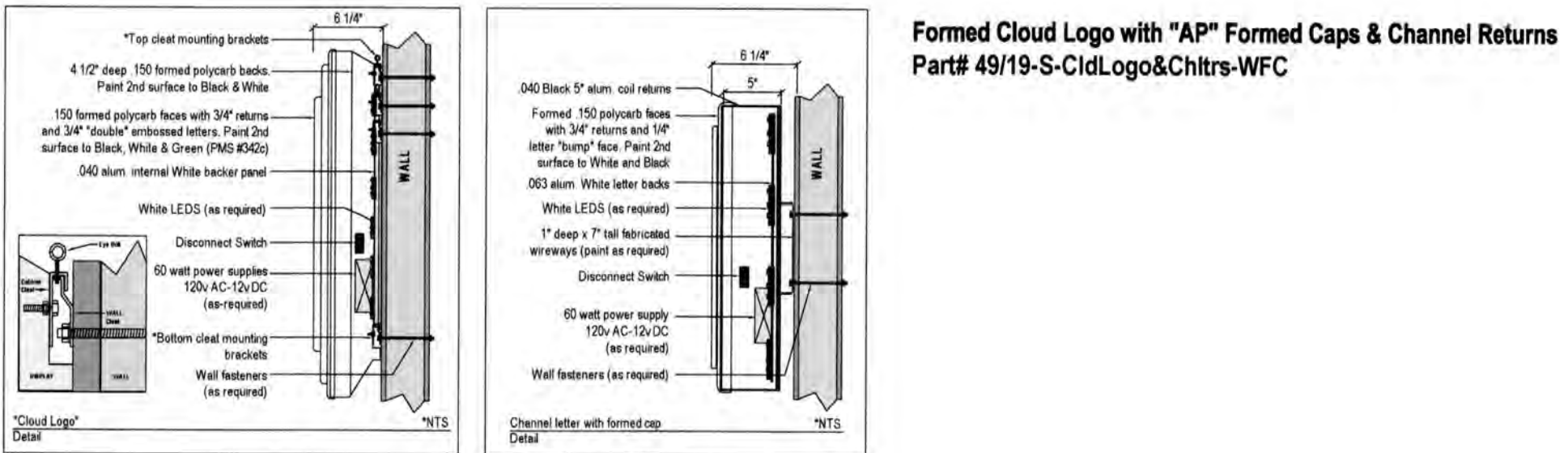
SG2.1 SCALE: 1/4" = 1'-0"



*"O'Reilly" Cloud Logo with "AP" channel letters on 7" (h) x 1" (d) wireways. Wireways paint to TBD
 *"O'Reilly" Cloud Logo is formed polycarb with double embossment with 2nd surface painted graphics. Paint match to: Green (PMS# 342c), Black and White.
 *"AP" to have formed polycarb caps with 1/4" letter "bumps". Black 5" aluminum coil returns. 2nd surface Black and White paint. WHITE LED illumination.

5 FRONT WALL SIGN ELEVATION

SG2.1 SCALE: 1/4" = 1'-0"



5 FRONT WALL SIGN DETAILS

SG2.1 SCALE: 1/4" = 1'-0"



CRAIG A. SCHNEIDER, AIA
 ARCHITECT
 1736 East Sunshine, Suite 417
 Springfield, Missouri 65804
 417.862.0558
 Fax: 417.862.3265
 e-mail: architect@estefschneider.com

PROJECT:
 NEW O'REILLY AUTO PARTS STORE
 N. MARKSHEFFEL ROAD
 COLORADO SPRINGS, CO #11
BUILDING EXTERIOR SIGNAGE

O'Reilly AUTO PARTS
 CORPORATE OFFICES
 233 SOUTH PATTERSON
 SPRINGFIELD, MISSOURI 65802
 (417) 862-2674 TELEPHONE

COMM #	4369
DATE:	10-11-19
REVISION	
DATE:	