

- EXISTING CONDITIONS NOTES**
1. THE CONTRACTOR IS OBLIGATED TO INSPECT FOR EXISTING CONDITIONS/INSTALLATIONS AND AVAILABLE INFORMATION PRIOR TO SUBMITTING A BID, REFER TO SPECIFICATIONS ALSO.
 2. EXISTING INSTALLATIONS (SUCH AS WATER MAINS/LINES, GAS MAINS/LINES, SEWER MAINS/LINES, TELEPHONE LINES, POWER LINES, AND UTILITY STRUCTURES IN THE VICINITY OF THE WORK TO BE DONE) ARE INDICATED ON THE DRAWINGS ONLY TO THE EXTENT THAT SUCH INFORMATION HAS BEEN MADE AVAILABLE TO OR DISCOVERED BY THE ENGINEER IN PREPARING THE DRAWINGS. THERE IS NO GUARANTEE AS TO THE ACCURACY OR COMPLETENESS OF SUCH INFORMATION, AND ALL RESPONSIBILITY FOR THE ACCURACY AND COMPLETENESS THEREOF IS EXPRESSLY DISCLAIMED.
 3. THE CONTRACTOR SHALL BE SOLELY RESPONSIBLE FOR LOCATING ALL EXISTING INSTALLATIONS.
 4. ANY DELAY, ADDITIONAL WORK, FEES OR EXTRA COST TO THE CONTRACTOR CAUSED BY OR RESULTING FROM DAMAGE TO OR MODIFICATION OF EXISTING INSTALLATIONS BY THE CONTRACTOR OR AFFECTED UTILITY COMPANY SHALL NOT CONSTITUTE A CLAIM FOR EXTRA WORK, ADDITIONAL PAYMENT OR DAMAGES.
 5. THE CONTRACTOR SHALL FIELD VERIFY ALL EXISTING CONSTRUCTION PRIOR TO SUBMITTING HIS BID. NO EXTRAS WILL BE PAID DUE TO UNANTICIPATED EXISTING CONDITIONS/INSTALLATIONS.

**CONTRACTOR CAUTION!!!
VERIFY SEWER LINE ELEVATION**

BEFORE STARTING ANY BUILDING PAD GRADING AND PLUMBING WORK, THE CONTRACTOR SHALL FIELD VERIFY LOCATION, MATERIAL, CONDITION, ACCESSIBILITY (INCLUDING STATE HIGHWAY OR OTHER RIGHTS-OF-WAY) AND WORKABLE FLOW LINE ELEVATION OF THE EXISTING SANITARY SEWER SERVICE LINE OR MAIN.

IF A WORKABLE FLOW LINE HAS NOT BEEN ESTABLISHED AT THE TIME OF FINAL SANITARY SEWER SERVICE CONNECTION, THEN THE CONTRACTOR SHALL BE RESPONSIBLE FOR ALL EXPENSES ASSOCIATED WITH THE INSTALLATION OF A NEW GRINDER PUMP SYSTEM EQUAL TO "ENVIRONMENT ONE" #DH152

PHONE: (518) 346-6161 TO MEET OWNER AND LOCAL REQUIREMENTS.

1 TELEPHONE SERVICE REQUIREMENTS

SPECIAL NOTE: NEW PHONE SERVICE TO BUILDING SHALL BE AN UNDERGROUND SERVICE. CONTRACTORS TO SCHEDULE INSTALLATION OF U/G TELEPHONE SERVICE CONDUIT WITH OWNER. CONTACT (417) 874-7288.

CONTRACTOR SHALL CONTACT PHONE COMPANY AND VERIFY REQUIRED SIZE OF CONDUIT (2", 3" OR 4") PVC SCHEDULE 40 CONDUIT WITH RIGID GALVANIZED STEEL LONG SWEEP BENDS @ 18-24" DEPTH FOR PHONE SERVICE. PROVIDE MINIMUM 1/4" POLYPROPYLENE PULL LINE. PLACE CONDUIT A MINIMUM OF 12" FROM U/G ELECTRIC CONDUIT IN SAME TRENCH.

CAP END OF CONDUIT AT PROPERTY LINE BELOW FINISHED GRADE AND INSTALL CABLE MARKER FOR PHONE COMPANY, IF NECESSARY. OTHERWISE, CONTINUE PHONE SERVICE CONDUIT TO A POLE AND INSTALL RIGID GALVANIZED STEEL CONDUIT A MINIMUM 10' (FT.) ABOVE FINISHED GRADE ATTACHED TO POLE.

CONTRACTOR SHALL COORDINATE INSTALLATION AND VERIFY REQUIREMENTS WITH PHONE COMPANY, PLUS INCLUDE ALL FEES (IF ANY) BY PHONE COMPANY FOR INSTALLATION OF NO LESS THAN 10 PAIR CABLE, IN MENTIONED CONDUIT, TO CONTRACTOR INSTALLED 4' X 6' X 3/4" FIRE RETARDING BACKBOARD (IF PLYWOOD, PAINT BOARD W/FIRE RETARDING PAINT) WITHIN BUILDING. CONTRACTOR TO PROVIDE #6 AWG CU, GROUND TO TELEPHONE EQUIPMENT LOCATION FROM ELECTRICAL GROUNDING ELECTRODE SYSTEM. FINAL CONNECTIONS AND INSIDE PHONE WIRING BY OWNER.

ONLY IF UNDERGROUND PHONE SERVICE IS NOT AVAILABLE-THEN MAY CONTRACTOR INSTALL APPROPRIATE OVERHEAD PHONE SERVICE RISER, WEATHER HEAD, ETC. COORDINATE WITH OWNER & PHONE CO.

UTILITIES CONTACTS:

ELECTRIC: MOUNTAIN VIEW ELECTRIC ASSOCIATION, CORRIE SMITH; (719)-495-2283
TELEPHONE: CENTURY LINK, CUSTOMER SERVICE; (719)-362-5403
WATER/SEWER: CHEROKEE METROPOLITAN DISTRICT, SHANE JEFF; (719)-597-5060, EXT.112
GAS: CITY OF COLORADO SPRINGS UTILITIES, GINNY HALVORSON; (719)-688-4426
PETROLEUM PIPELINE: MAGELLAN PIPELINES, DANIEL RICHESON; (719)-396-1046

CONTRACTOR TO CONTACT UTILITY COMPANIES FOR TAPPING AND FINAL CONNECTION RESPONSIBILITIES.

NEW UTILITIES

W WATER SERVICE
IR IRRIGATION SERVICE
UGE UNDERGROUND ELECTRIC
UGT UNDERGROUND PHONE
S SANITARY SEWER
OHE OVERHEAD ELECTRIC
OHT OVERHEAD PHONE
G GAS SERVICE (BY GAS CO.)

SAW CUT
BORE
GRAVEL

P.O.C. = POINT OF CONNECTION BETWEEN SITE PIPING (SPEC 02700) AND BUILDING PIPING (SPEC 21 13 13, 22 00 00) LOCATED 5'-0" OUTSIDE BUILDING, AS NECESSARY - SPEC 21 13 13 DENOTES LANDSCAPE IRRIGATION.

GENERAL NOTE:

PRIOR TO INSTALLATION, GENERAL CONTRACTOR SHALL CONFIRM THAT LIGHT POLES, LANDSCAPING AND UTILITIES DO NOT CONFLICT WITH SIGN LOCATION SHOWN. IF ANY POTENTIAL CONFLICT IS DISCOVERED, GENERAL CONTRACTOR SHALL CONTACT THE O'REILLY PROJECT ADMINISTRATOR BEFORE PROCEEDING.

EMS KEYNOTE

1 EMS / LIGHTING CONTROL PANEL. SEE EM SHEETS FOR MORE INFORMATION.

STOP-CALL BEFORE YOU DIG!

811



**CRAIG A. SCHNEIDER, AIA
ARCHITECT**

1736 East Sunshine, Suite 417
Springfield, Missouri 65804
e-mail: architect@esteryschneider.com

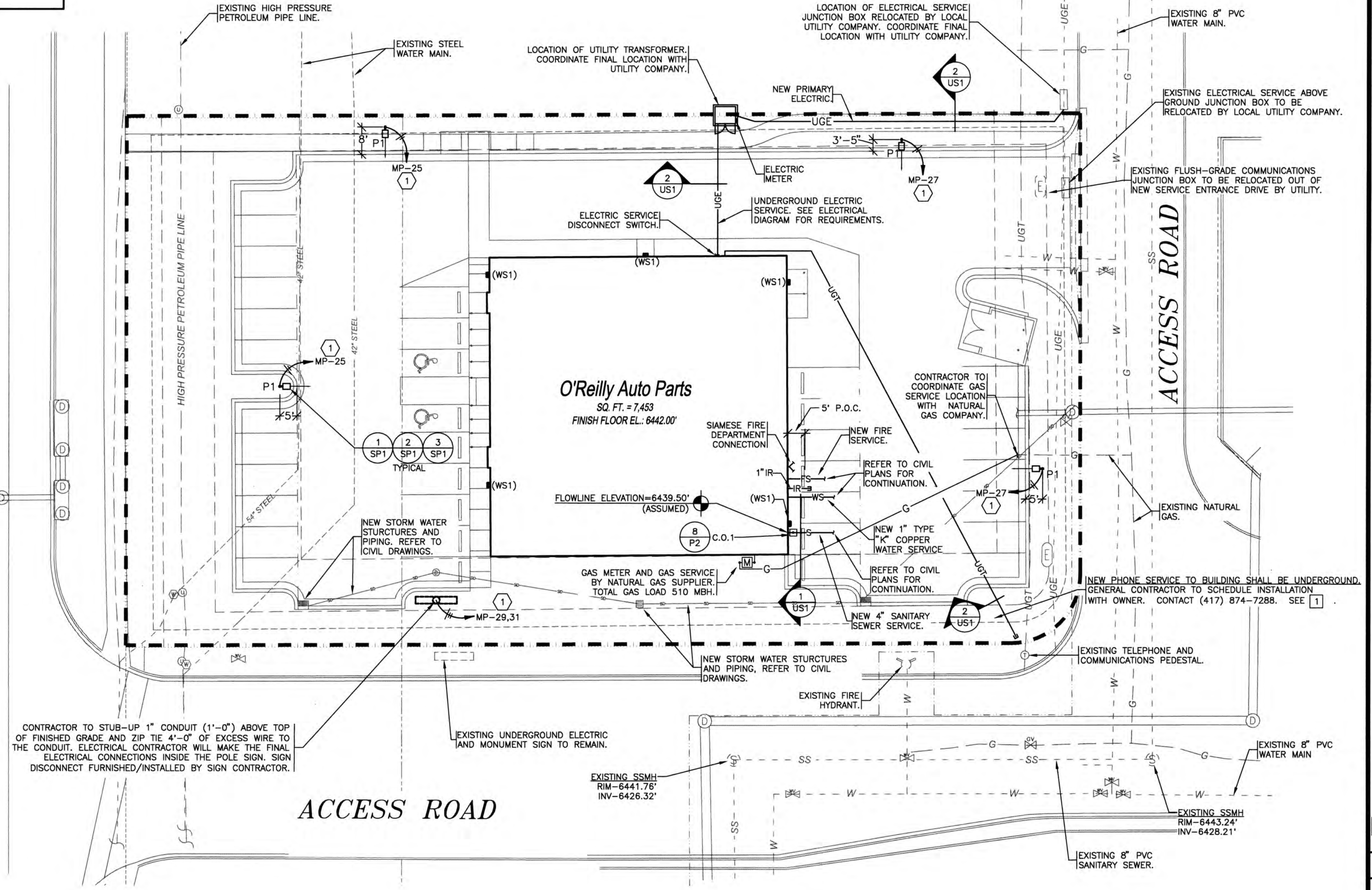
**PROJECT:
NEW O'REILLY AUTO PARTS STORE
N. MARKSHEFFEL ROAD
COLORADO SPRINGS, CO #11
UTILITIES SITE PLAN**

O'Reilly AUTO PARTS

CORPORATE OFFICES
233 SOUTH PATTERSON
SPRINGFIELD, MISSOURI 65802
(417) 862-2674 TELEPHONE

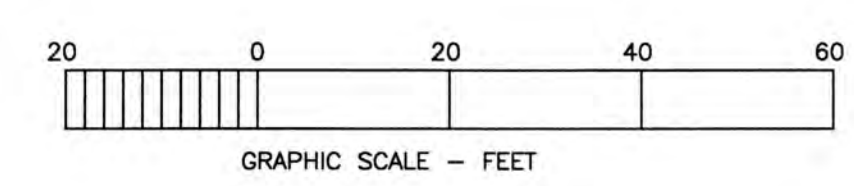
COMM # 4369
DATE: 10-11-19
REVISION
DATE:

US1



UTILITIES SITE PLAN

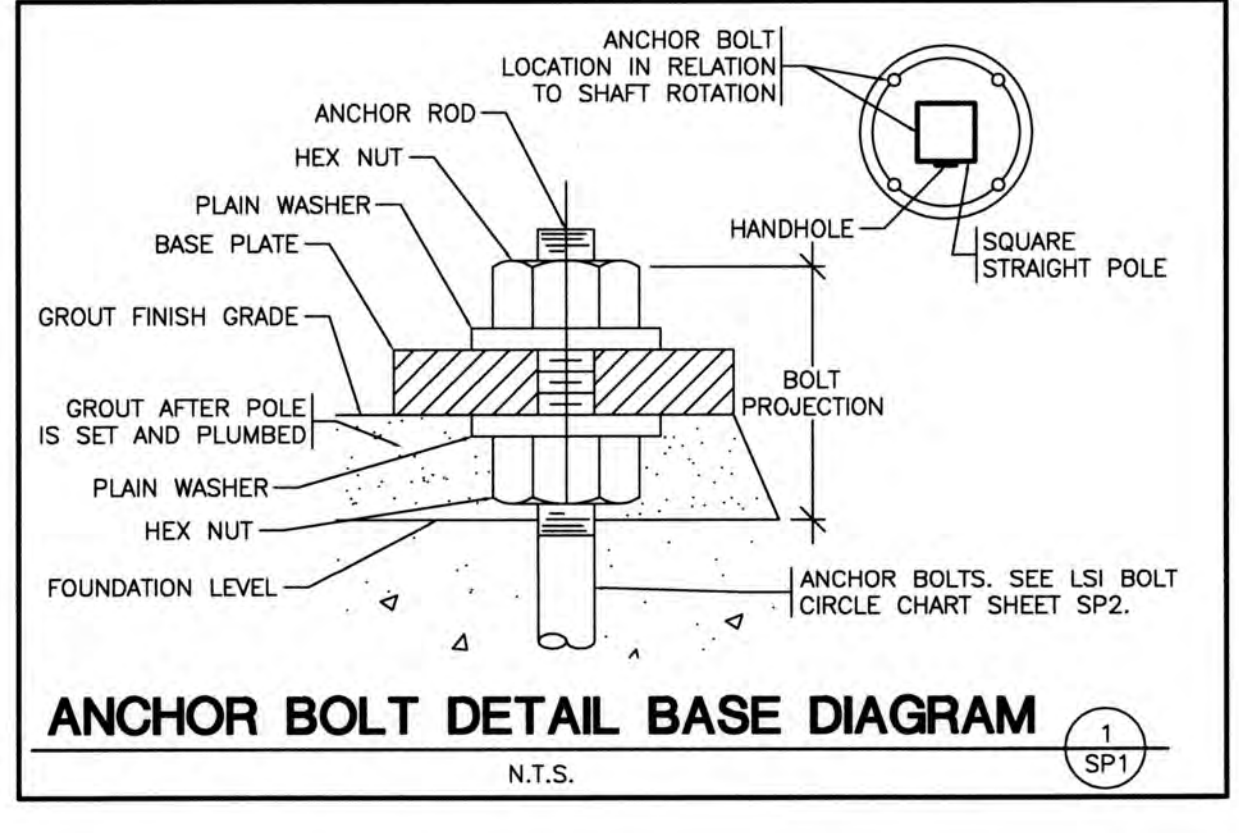
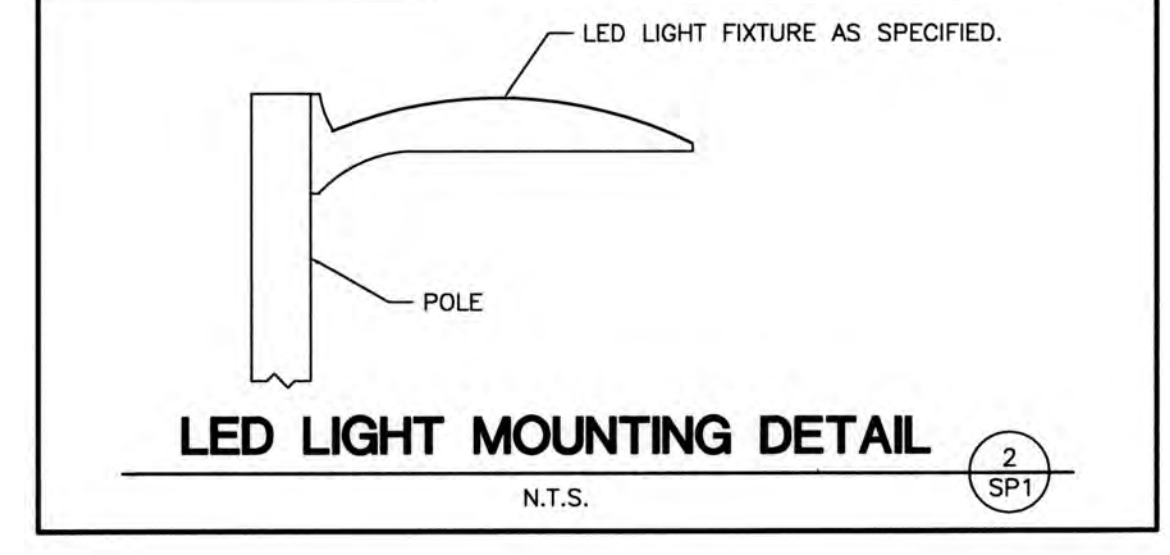
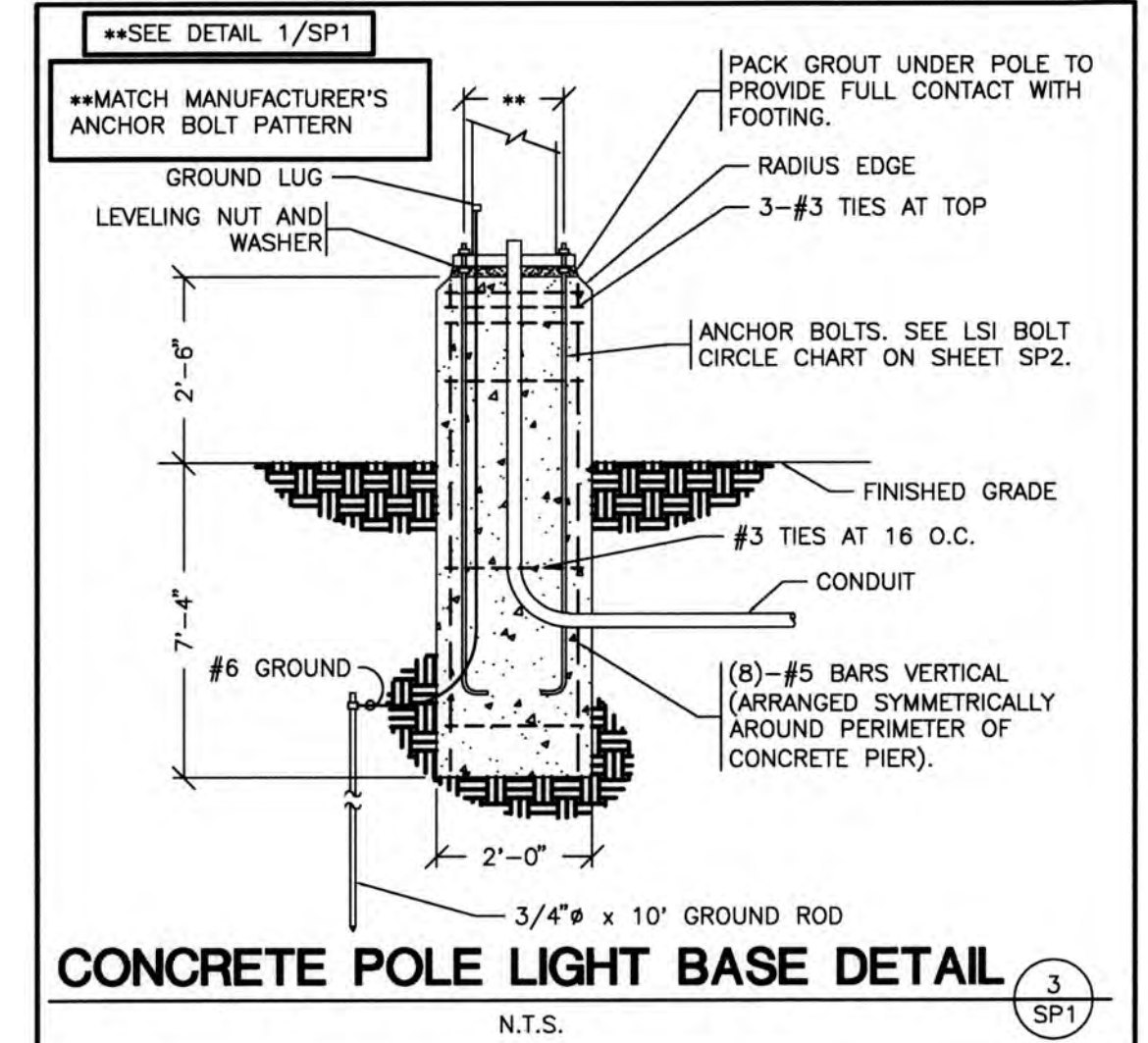
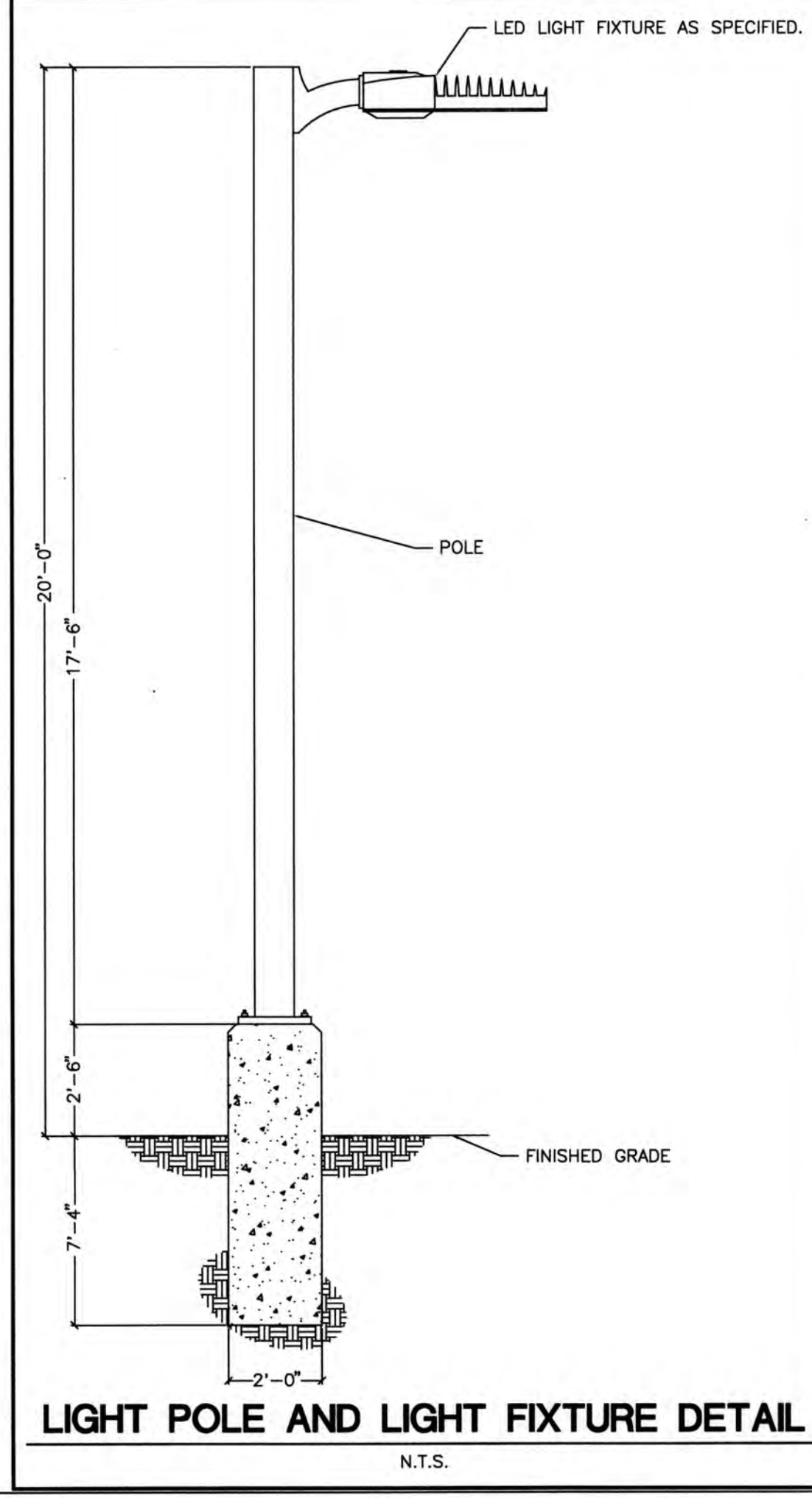
SCALE: 1"=20'



AUTOMATIC LIGHTING CONTROL

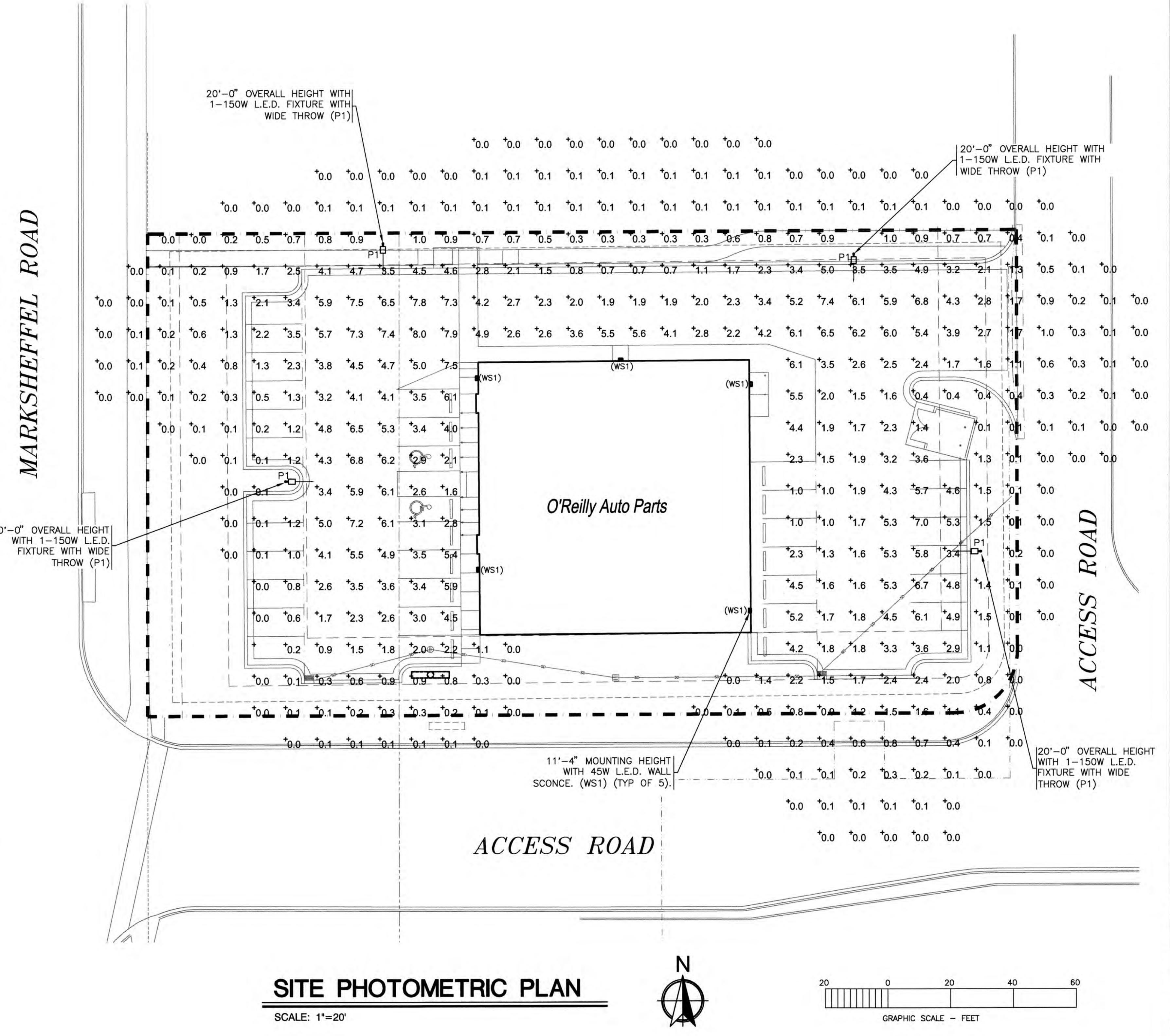
COMPLIANCE WITH ENERGY CODE IS ACHIEVED BY:

- ONCE THE EMS HAS BEEN PROGRAMMED, THE INTERIOR AND EXTERIOR LIGHTS WILL TURN ON AND OFF USING THE FOLLOWING LOGIC: SEE EM SHEETS.
 - INTERIOR WORK LIGHTS WILL TURN ON WITH FIRST MOTION IN THE STORE AND WILL TURN OFF 15 MINUTES AFTER LAST MOTION ONCE THE STORE IS CLOSED.
 - INTERIOR SALES LIGHTS WILL TURN ON AT STORE OPENING AND TURN OFF 15 MINUTES AFTER STORE CLOSING.
 - EXTERIOR SIGN LIGHTS WILL TURN ON WHEN ITS DARK ENOUGH OUTSIDE ANYTIME DURING STORE HOURS, AND WILL TURN OFF AT STORE CLOSING.
 - EXTERIOR SITE LIGHTS WILL TURN ON WHEN IT IS DARK ENOUGH OUTSIDE AND IT IS WITHIN STORE HOURS OR THERE IS MOTION IN THE STORE. THEY WILL TURN OFF 30 MINUTES AFTER LAST MOTION ONCE THE STORE IS CLOSED.
- RESTROOMS AND OFFICES: ALL LIGHTING IN THESE AREAS ARE CONTROLLED BY OCCUPANT-SENSING DEVICES.



EXTERIOR LIGHT FIXTURE SCHEDULE										
ALL ITEMS LISTED ON THE "LIGHT FIXTURE SCHEDULE" WILL BE SUPPLIED BY THE OWNER (O'REILLY). ITEMS SHALL BE DIRECT ORDERED AND OR RELEASED FROM THE LISTED ELECTRICAL EQUIPMENT DISTRIBUTOR:					GRAYBAR ELECTRIC CO. INC. 11885 LACKLAND ROAD ST. LOUIS, MO 63146			GRAYBAR O'REILLY TEAM EMAIL: oreilly@graybar.com TOLL FREE: (314) 573-2080		
MARK	MFR.	CATALOG NUMBER	SUPPLY VOLTAGE	FINISH	MOUNTING		LAMPS		WATTAGE	NOTES
					SURFACE WALL	SURF. CEILING	FLUORESCENT	LED		
LED EXTERIOR LIGHTS										
WS1	LSI	XWM-FT-LED-06L-80-UE-BRZ NO SUBSTITUTIONS	120	DARK BRONZE	X		X		45	FULL CUT-OFF. ARCHITECTURAL ELEVATIONS SHOW DIMENSIONED LOCATIONS.
LED POLE LIGHTS										
P1	LSI	MFM-LED-18L-SIL-3-UM-DIM-80-80CRI-BRZ-IL	120	DARK BRONZE		X	X		150	17'-6" POLE LENGTH, FULL CUT-OFF, NO SUBSTITUTIONS. ANCHOR BOLTS W/HARDWARE & TEMPLATE. WITH INTERNAL LOUVER HOUSE SIDE SHIELD.
	LSI	550B3-S11G-17.5-S-BRZ-LAB-SBC								

FIXTURE QUANTITY TO BE VERIFIED WITH SITE PLAN QUANTITY



CRAIG A. SCHNEIDER, AIA
ARCHITECT
1736 East Sunshine, Suite 417
Springfield, Missouri 65804
417-862-0558
417-862-3265
e-mail: architect@craftschneider.com

PROJECT:
NEW O'REILLY AUTO PARTS STORE
N. MARKSHEFFEL ROAD
COLORADO SPRINGS, CO #11
SITE PHOTOMETRIC PLAN

O'Reilly AUTO PARTS
CORPORATE OFFICES
233 SOUTH PATTERSON
SPRINGFIELD, MISSOURI 65802
(417) 862-2674 TELEPHONE

COMM # 4369
DATE: 10-11-19
REVISION
DATE:

