



SITE LOCATION

Spring Tabernacle  
Christian Fellowship



Burgess Rd

BURGESS RD

Mello Memories



Wild Blue Cats!

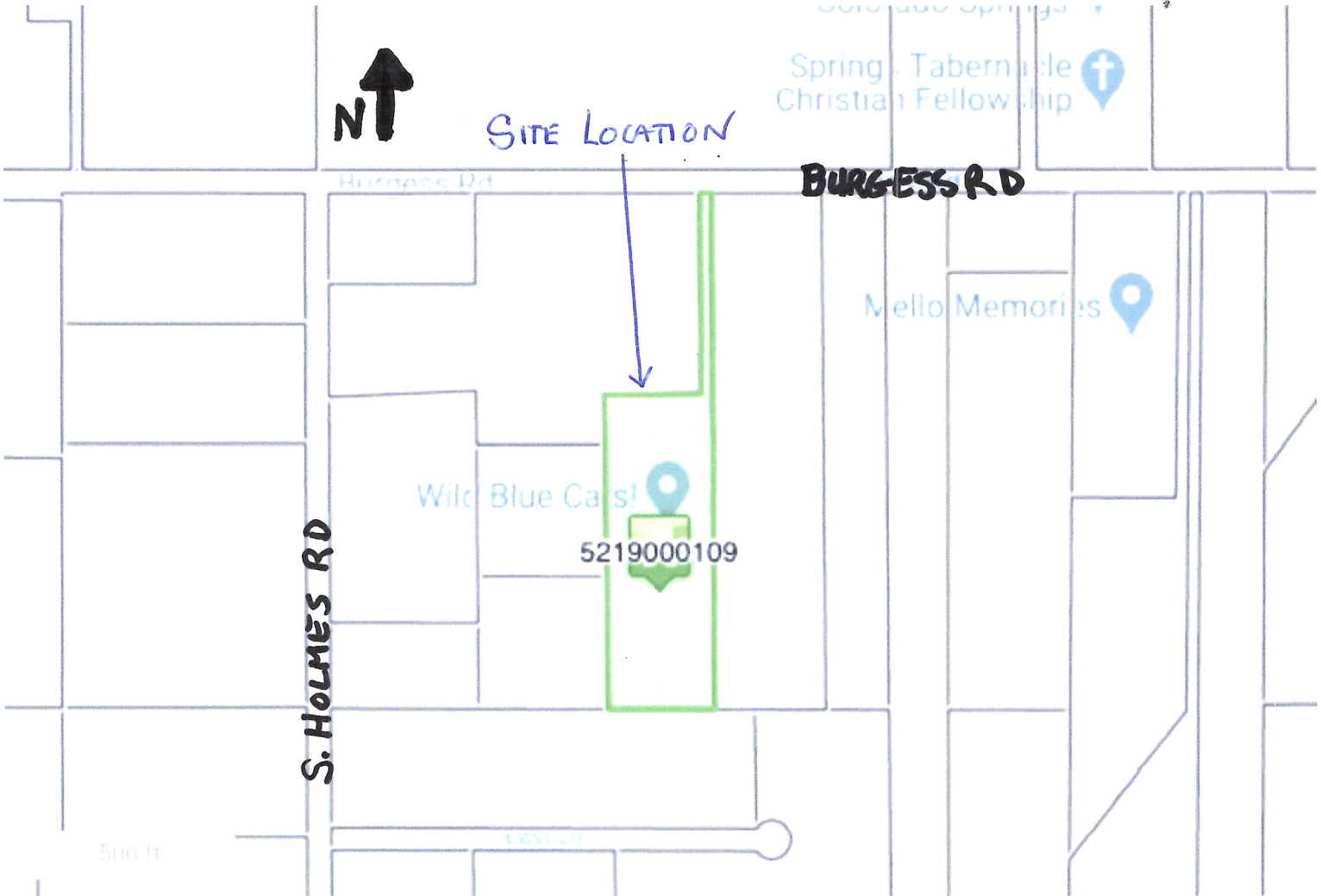
5219000109



S. HOLMES RD

500 ft

East Ln



# El Paso County Parcel Information

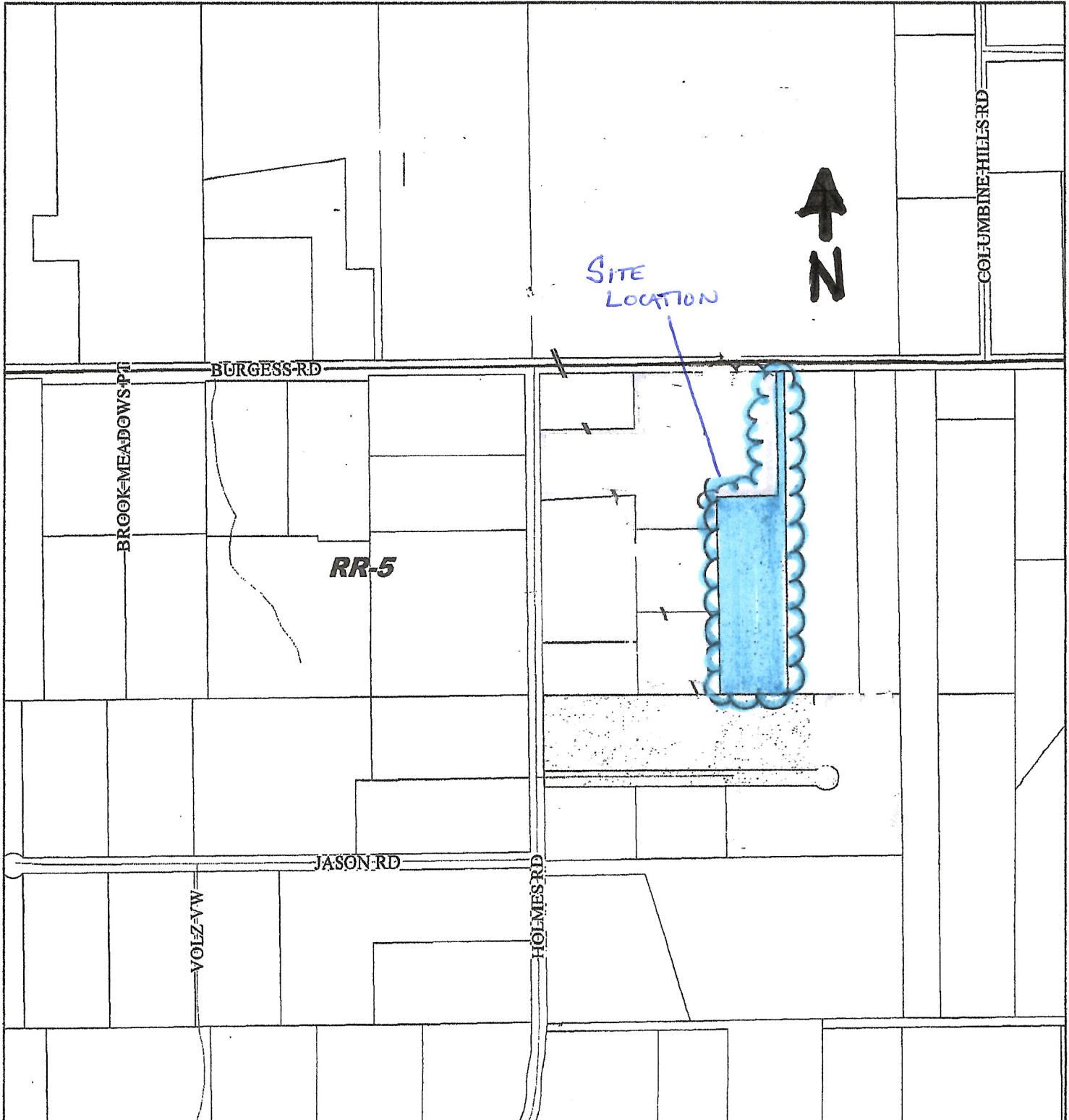
File Name: **AL-14-004**

Zone Map No.: **523.19**

PARCEL	NAME	CITY	STATE
5219000109	TRIMBOLI MICHAEL S		
5219000038	LKC LIVING TRUST		
5219000047	CROSSADRESS TRUSTEE		
5975 BURGESS RD	COLORADO SPRINGS	CO	
11235 S HOLMES RD	COLORADO SPRINGS	CO	

ZIP	ZIPLUS
80908	
80908	

Date: **SEPTEMBER 8, 2014**



Please report any parcel discrepancies to:  
 El Paso County Assessor  
 1675 W. Garden of the Gods Rd.  
 Colorado Springs, CO 80907  
 (719) 520-6600



COPYRIGHT 2013 by the Board of County Commissioners, El Paso County, Colorado. All rights reserved. No part of this document or data contained hereon may be reproduced, used to prepare derivative products, or distributed without the specific written approval of the Board of County Commissioners, El Paso County, Colorado. This document was prepared from the best data available at the time of printing. El Paso County, Colorado, makes no claim as to the completeness or accuracy of the data contained hereon.