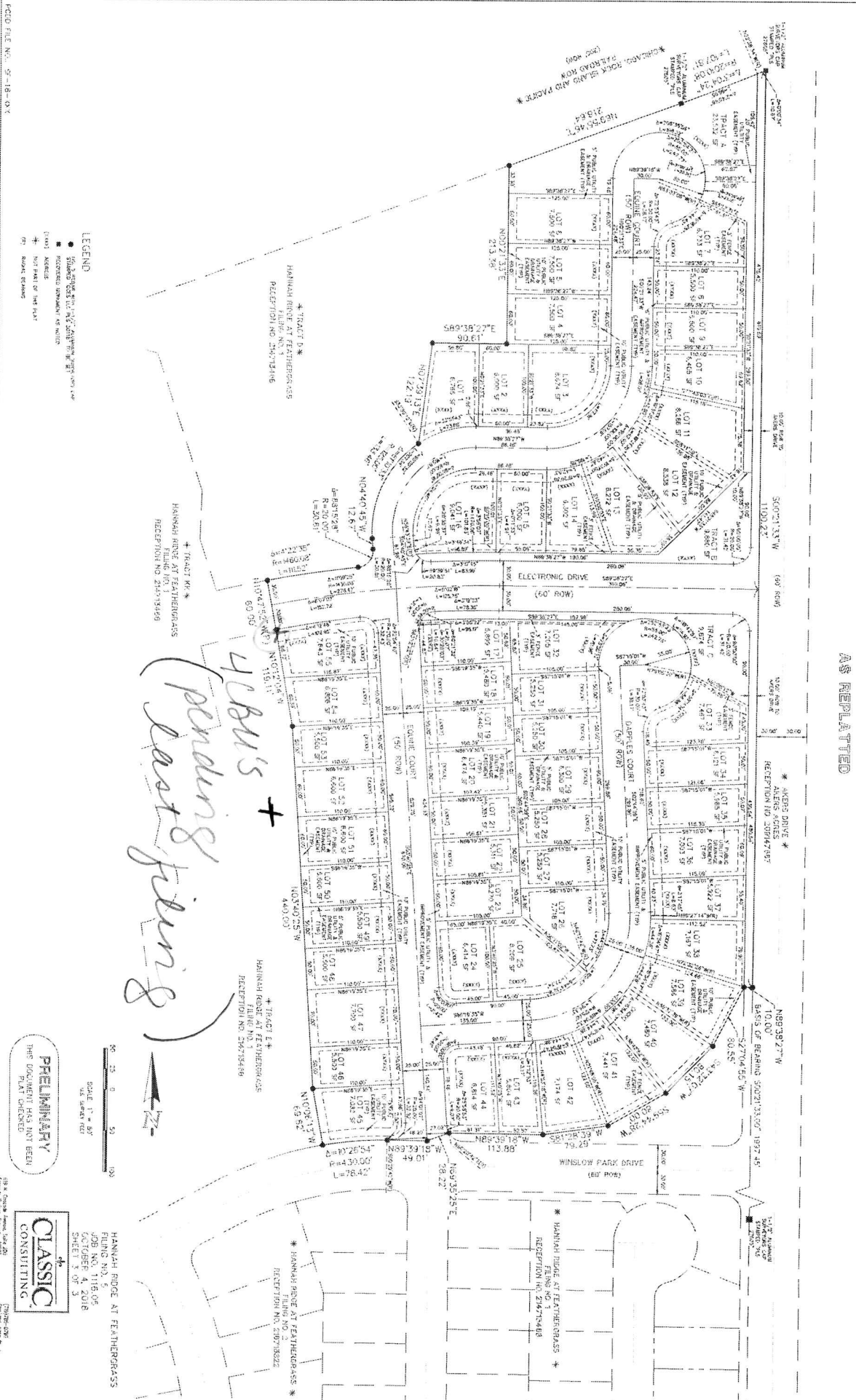


**HANNAH RIDGE AT FEATHERGRASS FILING NO. 5**  
 A REPEAT OF TRACTS HH AND JJ OF HANNAH RIDGE AT FEATHERGRASS FILING NO. 1, RECEPTION NO. 244719248, RECORDS OF EL PASO COUNTY COLORADO  
 A PORTION OF SECTION 32, TOWNSHIP 19 SOUTH, RANGE 65 WEST OF THE SIXTH PRINCIPAL MERIDIAN, EL PASO COUNTY, COLORADO  
 AS REPLATED



**LEGEND**

- Easement
- Proposed Change
- Not Part of Plat
- Not Part of Plat

**PRELIMINARY**  
 THIS DOCUMENT HAS NOT BEEN  
 PLAT CHECKED

**CLASSIC**  
 CONSULTING

HANNAH RIDGE AT FEATHERGRASS  
 FILING NO. 5  
 OCTOBER 4, 2018  
 SHEET 3 OF 3

SCALE 1" = 80'  
 AS SHOWN

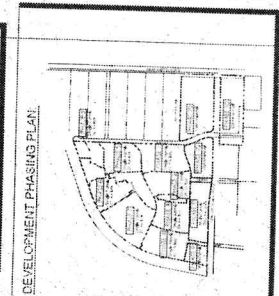
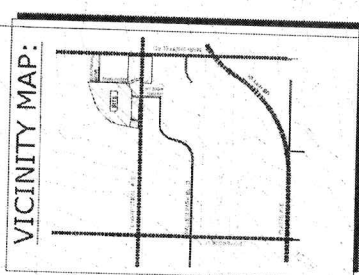


PLAT FILE NO. 5-18-03

*Hudson Ridge at Feathergrass*

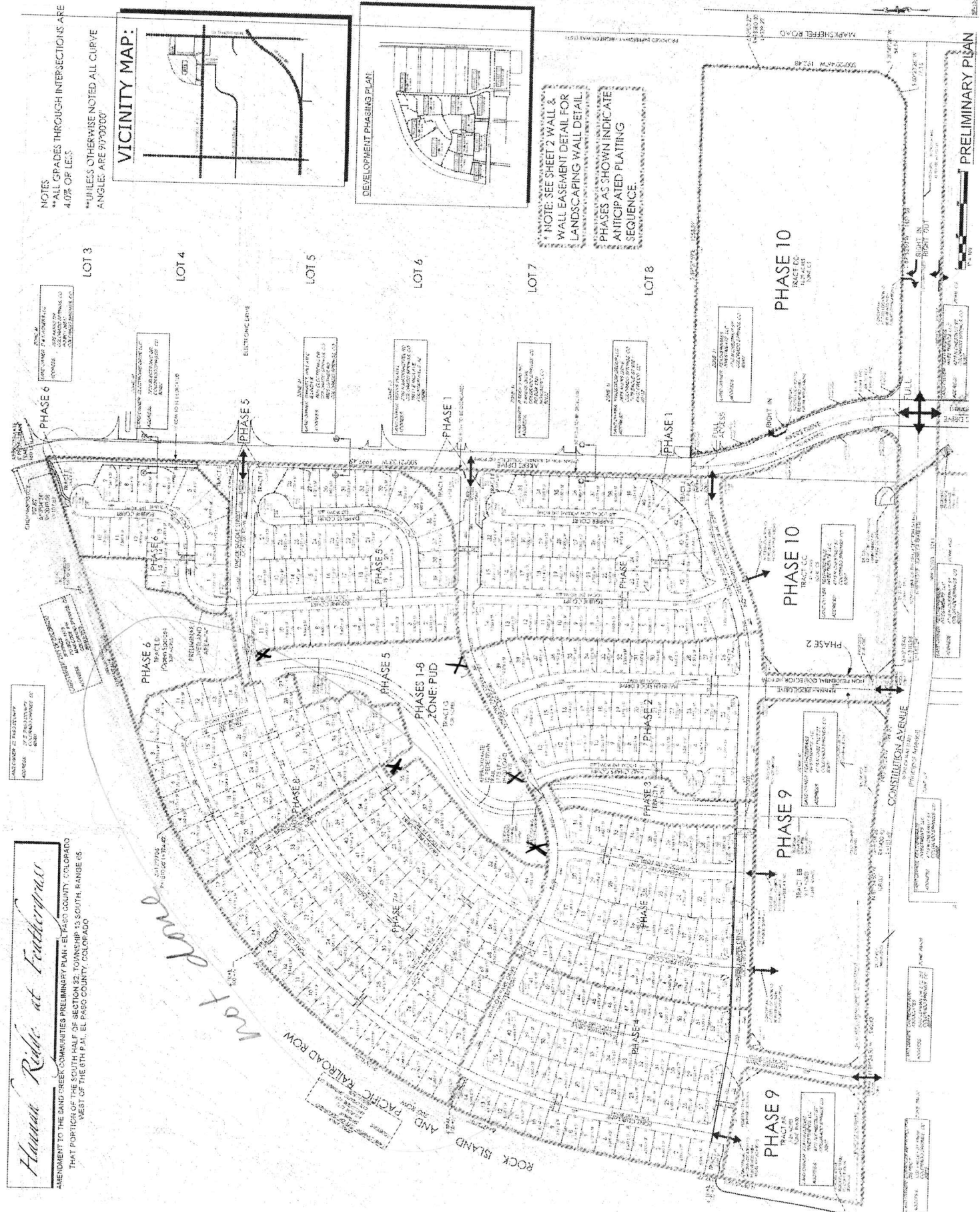
AMENDMENT TO THE SAND CREEK COMMUNITIES PRELIMINARY PLAN - EL PASO COUNTY, COLORADO  
 THAT PORTION OF THE SOUTH HALF AND SECTION 32, TOWNSHIP 13 SOUTH, RANGE 05  
 WEST OF THE 6TH P.M., EL PASO COUNTY, COLORADO

NOTES  
 \*\*ALL GRADES THROUGH INTERSECTIONS ARE  
 4.0% OR LESS  
 \*\*UNLESS OTHERWISE NOTED ALL CURVE  
 ANGLE: ARE 97°00'00"



NOTE: SEE SHEET 2 WALL &  
 WALL EASEMENT DETAIL FOR  
 LANDSCAPING WALL DETAIL  
 PHASES AS SHOWN INDICATE  
 ANTICIPATED PLATING  
 SEQUENCE.

LOT 3  
 LOT 4  
 LOT 5  
 LOT 6  
 LOT 7  
 LOT 8



PRELIMINARY PLAN

SHEET 2