

LANDSCAPE REQUIREMENTS					
LANDSCAPE SETBACKS (LS)					
Street Name / Boundary	Street Classification	Width (ft.) Req. / Prov.	Linear Footage	Tree Req. / Ft.	Tree Req. /Prov.
Akers Drive (Filing 5)	Non Arterial	10'/10'	1,036'	1/30	34.5 /35
Internal Landscaping (IL)					
Net Site Area (SF) (Less Public R.O.W.)	Percent Min. Internal Area	Internal Area (SF) Req. / Prov.		Internal Trees (1/500 SF) Req. / Prov.	
NA	NA	NA SF		NA/NA	
Shrub Substitutions Req. / Prov.	Ornamental grass Req. / Prov.	Setback Abbr.	Percent Ground Plane Cov. Req./Prov.		
0/0	0/0	IL	75%/75%		
LANDSCAPE BUFFERS & SCREENS (LB)					
Street Name / Boundary	Width (ft.) Req. / Prov.	Linear Footage	Tree Req. / Prov. Buffer Trees (1/15')	Evergreen Trees Req. (33%) / Prov.	
Akers Drive (Filing 5 not applicable)		15' / 15'	1,036	0/0	0/0
Length 6' Opaque Struct. Req. / Prov.	Buffer Noted on Plan (LB)	Percent Ground Plane Cov. Req./ Prov.			
Akers Drive (Filing 5 not applicable) LB		75% / 75%		(NA Tract will have 6' wall)	

PLANT AND TREE WARRANTY NOTE

ALL STOCK IS WARRANTED TO BE TRUE TO NAME. IF ANY STOCK PROVES TO BE OTHERWISE, SELLER WILL NOT BE LIABLE FOR ANY AMOUNT GREATER THAN ORIGINAL PURCHASE PRICE. THIS WARRANTY IS MADE EXPRESSLY IN LIEU OF ANY AND ALL OTHER WARRANTIES, EXPRESSED OR FIT FOR ANY PARTICULAR PURPOSE EXCEPT EXPRESSLY PROVIDED FOR. LIABILITY OF SELLER IS LIMITED TO REPLACEMENT OF ANY GOODS WHICH DO NOT CONFIRM TO WARRANTIES.

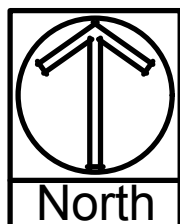
WINTER WATERING IS TO BE DONE AFTER MOISTURE CHECKS HAVE BEEN COMPLETED OF ALL PLANTS AND TREES. WARRANTY DOES NOT COVER PLANTS AND TREES DUE TO LACK OF WATER.

WARRANTY IS GOOD FOR ONE GROWING SEASON (APPROXIMATELY SIX MONTHS). PLANTS PURCHASED AFTER JULY 1ST ARE WARRANTED UNTIL MAY 1ST. PLANTS PURCHASED JANUARY 1ST THROUGH JULY 2ND ARE WARRANTED UNTIL NOVEMBER 30TH. SOME PLANTS CARRY NO WARRANTY. (TURF INCLUDED) SUCH AS ANNUALS, PERENNIALS, ROSES, ARBOREVITAE, AND A FEW OTHER VARIETIES. INSTALLATION IS NOT COVERED UNDER WARRANTY.

ALL NON-IRRIGATED SEED CARRIES NO WARRANTY.

LANDSCAPE IRRIGATION NOTE

LANDSCAPE TO BE IRRIGATED WITH A PROGRAMMABLE IRRIGATION CONTROLLER. TREES, SHRUBS, ORNAMENTAL GRASSES, AND PERENNIALS TO BE DRIP IRRIGATED WHEN LOCATED IN MULCH AREAS. TURF OR IRRIGATED SEED AREAS TO BE SPRAY IRRIGATED WITH POP UP SPRAY OR ROTOR HEADS. IRRIGATION SYSTEM TO HAVE A RAIN SENSOR.



SCALE 1"=80'

UTILITY NOTE

CALL 1-800-922-1987 FOR UTILITY LOCATIONS TO VERIFY LOCATION AND DEPTH OF ALL UNDERGROUND UTILITIES PRIOR TO START OF WORK. KEEP TREES 10' FROM GAS MAINS & 15' FROM SEWER AND WATER MAIN LINES. KEEP TREES 6' MINIMUM DISTANCE FROM ANY OTHER UTILITIES. RESOLVE ANY TREE / UTILITY CONFLICTS SHOWN ON PLANS IN THE FIELD. CONTACT LANDSCAPE ARCHITECT FOR RECOMMENDATIONS IF NEEDED.

PROVIDE CLEARANCE OF ALL PLANT MATERIALS AT ELECTRIC VAULTS AND TRANSFORMERS (REFER TO COLORADO SPRINGS UTILITIES CONSTRUCTION STANDARD DRAWING 18-302 FOR SPECIFIC CLEARANCE REQUIREMENTS).

KEEP ALL SHRUBS 3' CLEAR OF ALL FIRE HYDRANTS AT MATURE SIZE.

SITE CONDITIONS NOTE

THE LANDSCAPE IS SUBJECT TO CHANGE BASED ON SITE GRADING, DRAINAGE, CONFIGURATION, AND SIZE. ANY ADJUSTMENTS WILL BE MADE DURING LANDSCAPE CONSTRUCTION. PLANT MATERIAL SYMBOLS ARE SHOWN AT MATURE WIDTH.

SEE SHEET L-5 FOR PLANTING AND GROUNDCOVER LEGEND



ALL AMERICAN
LANDSCAPE ARCHITECTURE & IRRIGATION DESIGN
RESIDENTIAL & COMMERCIAL LANDSCAPE INSTALLATION
1925 AEROPOLAZA DRIVE
COLORADO SPRINGS, CO 80916
719.537.4313

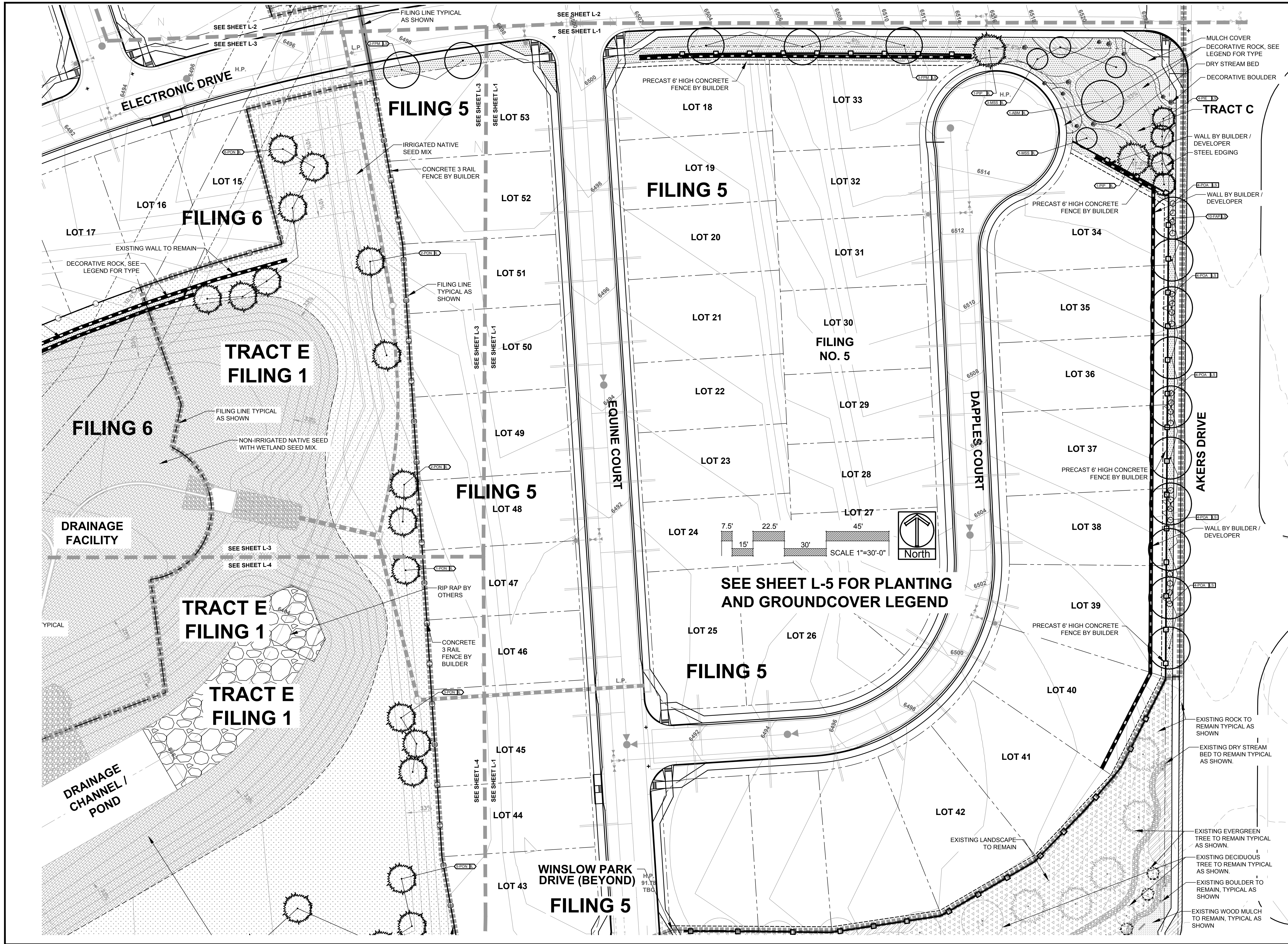
DATE	REVISION DESCRIPTION
10/11/18	Update base and grading.


☐ FOR CONSTRUCTION
☒ NOT FOR CONSTRUCTION



HANNAH RIDGE
FILING 5-7, COMMON AREAS

JOB NUMBER	2346-0718
DATE	8/21/18
DRAWN BY	MB
DRAWING DESCRIPTION	TITLE SHEET
SHEET #	L-TS
© 2013 BY ALL AMERICAN • ALL RIGHTS RESERVED	






ALL AMERICAN
LANDSCAPE ARCHITECTURE & IRRIGATION DESIGN
1925 AEROPOLAZA DRIVE
COLORADO SPRINGS, CO 80916
719.637.4313

DATE	REVISION DESCRIPTION
10/11/18	Update base and grading.

☐ FOR CONSTRUCTION
☒ NOT FOR CONSTRUCTION



CLASSIC
COMMUNITIES

HANNAH RIDGE
FILING 5-7, COMMON AREAS

JOB NUMBER
2346-0718

DATE
8/21/18

DRAWN BY
MB

DRAWING DESCRIPTION
PRELIMINARY LANDSCAPE PLAN

SHEET #
L-1

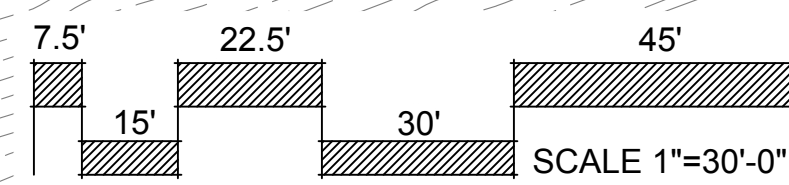
© 2013 BY ALL AMERICAN • ALL RIGHTS RESERVED

CALLOUT KEY

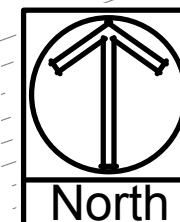
- PLANT ABBREVIATION
- SITE CATEGORY ABBREVIATION
- TREE CALLOUT
- SHRUB & ORN. GRASS CALLOUT
- PERENNIAL CALLOUT
- PLANT QUANTITY

PLANT SYMBOL KEY

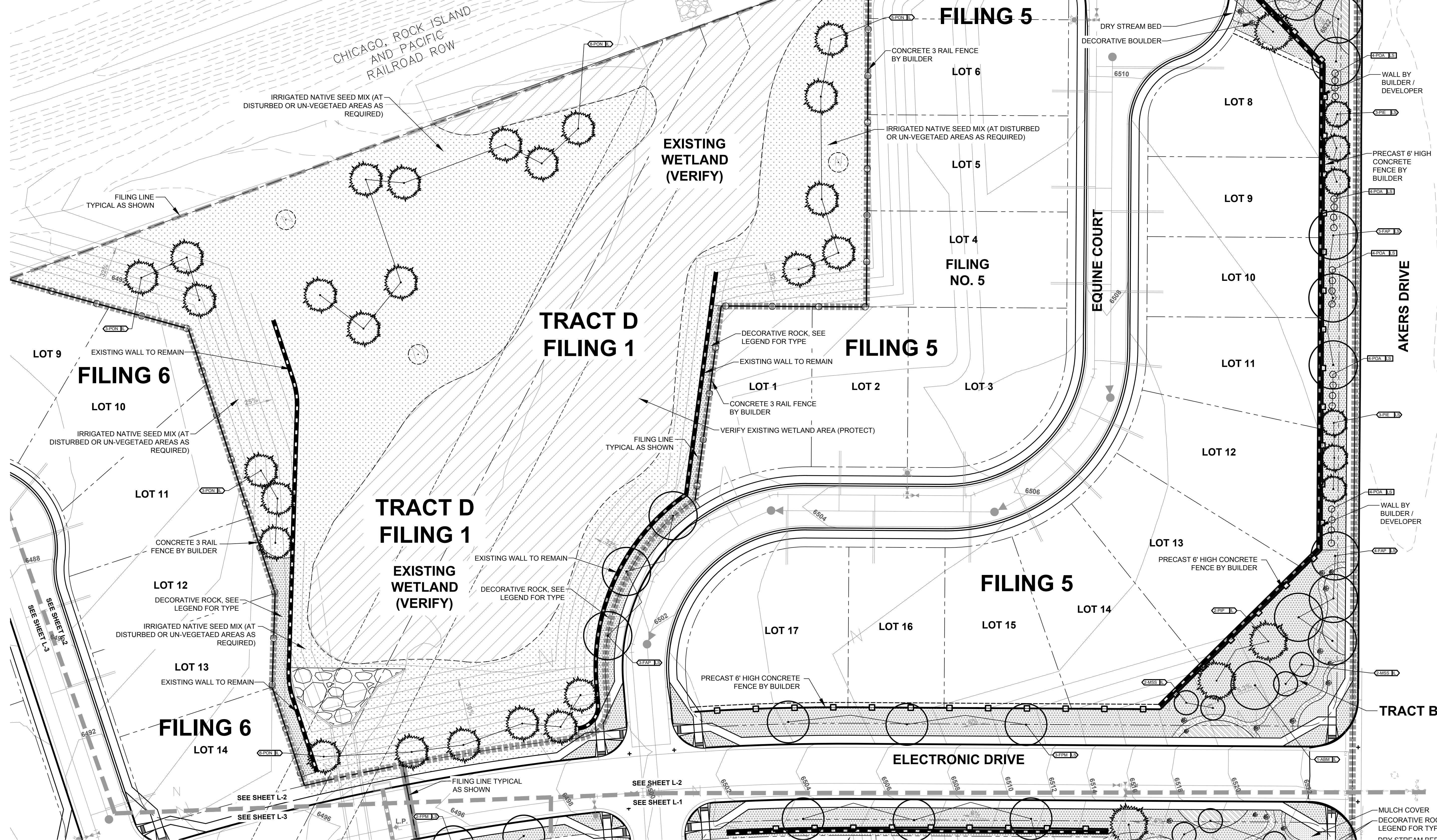
- DECIDUOUS TREE
- ORNAMENTAL TREE
- EVERGREEN TREE
- DECIDUOUS SHRUBS
- EVERGREEN SHRUBS
- ORNAMENTAL GRASSES
- PERENNIALS



SEE SHEET L-5 FOR PLANTING AND GROUND COVER LEGEND



CHICAGO, ROCK ISLAND AND PACIFIC RAILROAD ROW



ALL AMERICAN
LANDSCAPE ARCHITECTURE & IRRIGATION DESIGN
RESIDENTIAL & COMMERCIAL LANDSCAPE INSTALLATION
1925 AEROPOLAZA DRIVE
COLORADO SPRINGS, CO 80916
719.637.4313

DATE	REVISION DESCRIPTION
10/11/18	Update base and grading.

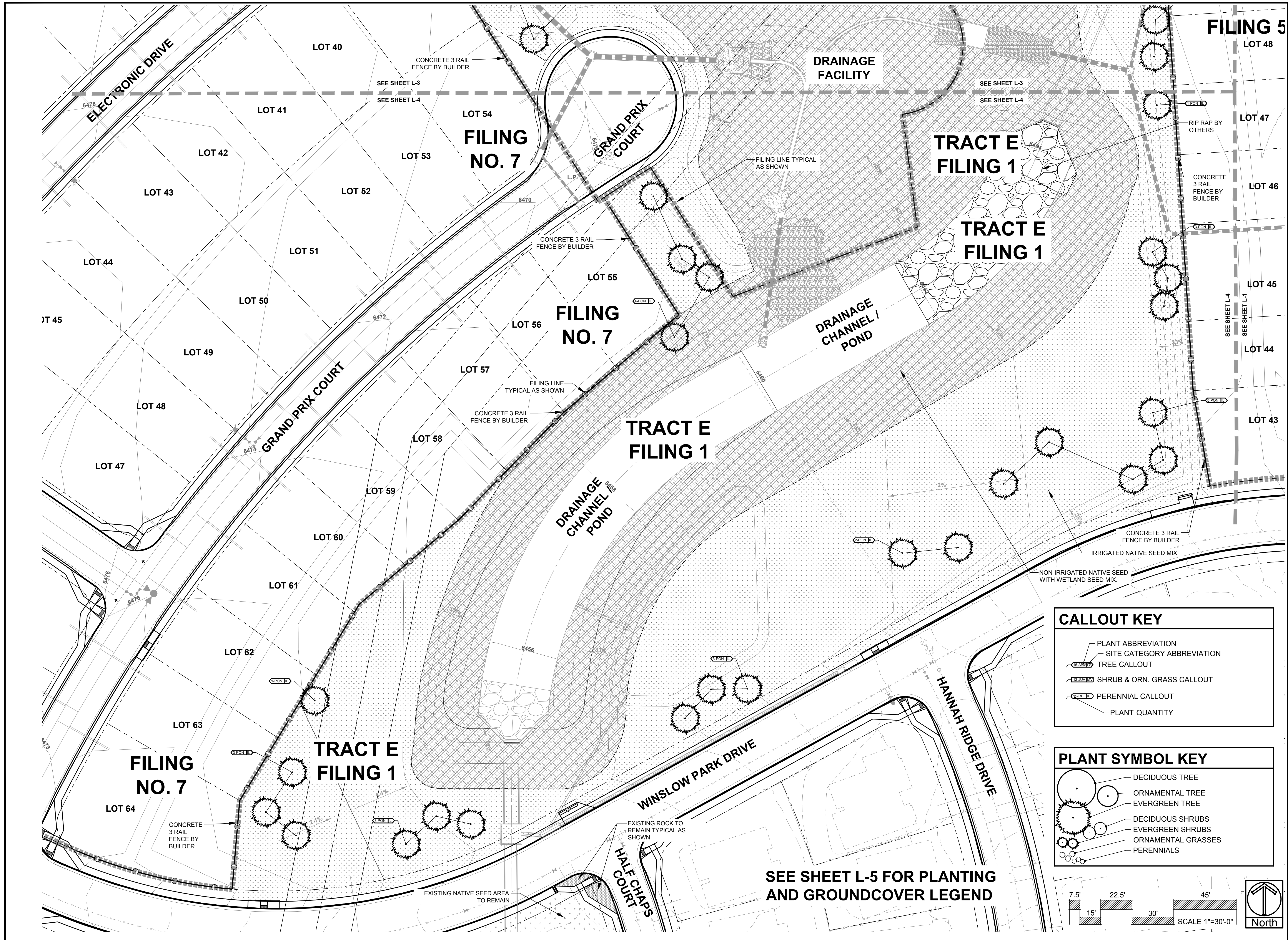
- ☐ FOR CONSTRUCTION
☒ NOT FOR CONSTRUCTION



HANNAH RIDGE
FILING 5-7, COMMON AREAS

JOB NUMBER	2346-0718
DATE	8/21/18
DRAWN BY	MB
DRAWING DESCRIPTION	PRELIMINARY LANDSCAPE PLAN
SHEET #	L-2

© 2013 BY ALL AMERICAN • ALL RIGHTS RESERVED



ALL AMERICAN
LANDSCAPE ARCHITECTURE & IRRIGATION DESIGN
RESIDENTIAL & COMMERCIAL LANDSCAPE INSTALLATION
1925 AEROPOLAZA DRIVE
COLORADO SPRINGS, CO 80916
719.637.4313

DATE	REVISION DESCRIPTION
10/11/18	Update base and grading.

☐ FOR CONSTRUCTION
☒ NOT FOR CONSTRUCTION

CLASSIC
COMMUNITIES

HANNAH RIDGE
FILING 5-7, COMMON AREAS

JOB NUMBER: 2346-0718
DATE: 8/21/18
DRAWN BY: MB
DRAWING DESCRIPTION: PRELIMINARY LANDSCAPE PLAN
SHEET #: L-4
© 2013 BY ALL AMERICAN • ALL RIGHTS RESERVED

CALLOUT KEY

- PLANT ABBREVIATION
- SITE CATEGORY ABBREVIATION
- TREE CALLOUT
- SHRUB & ORN. GRASS CALLOUT
- PERENNIAL CALLOUT
- PLANT QUANTITY

PLANT SYMBOL KEY

- DECIDUOUS TREE
- ORNAMENTAL TREE
- EVERGREEN TREE
- DECIDUOUS SHRUBS
- EVERGREEN SHRUBS
- ORNAMENTAL GRASSES
- PERENNIALS

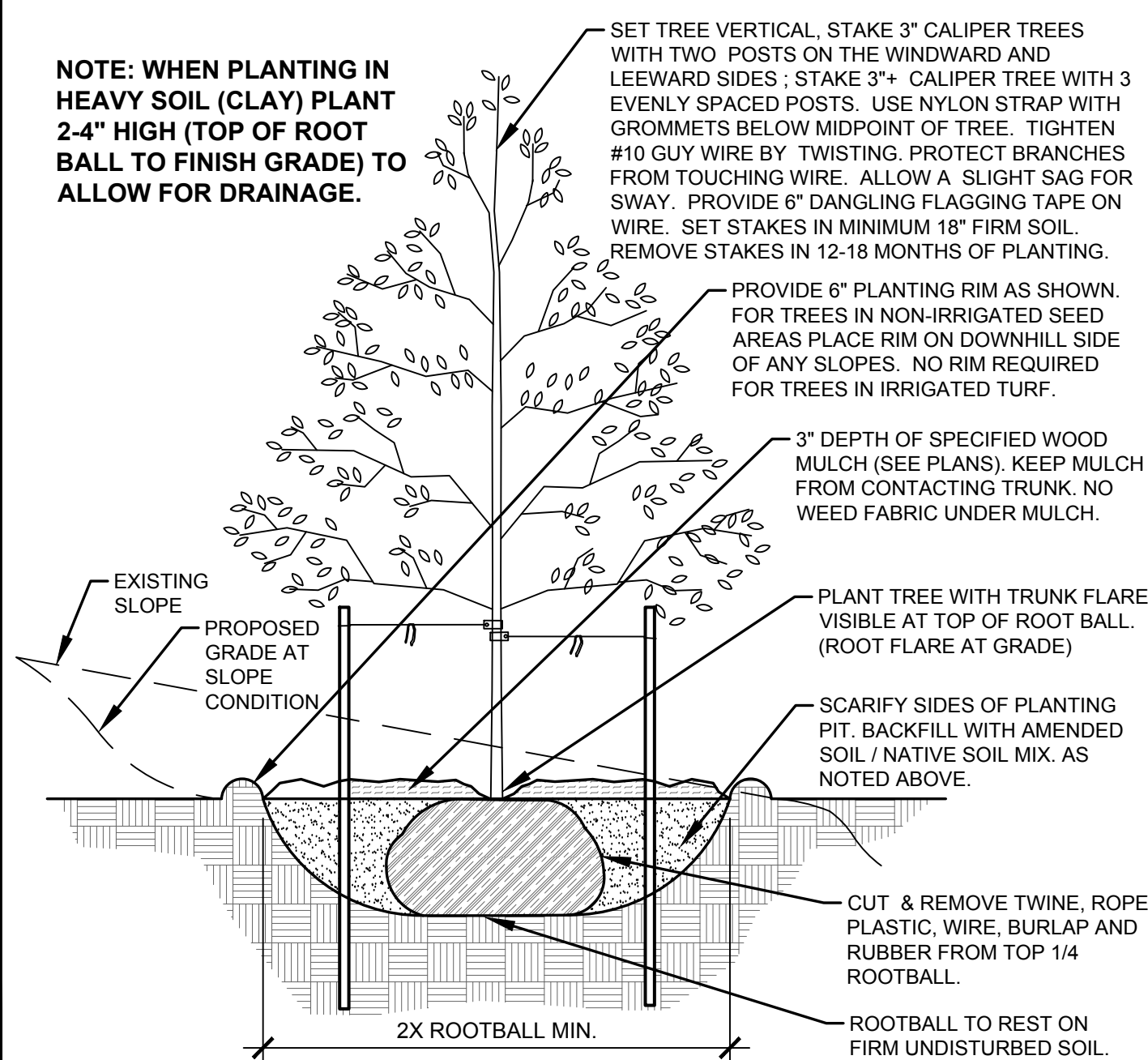
7.5' 15' 22.5' 30' 45'

SCALE 1"=30'-0"

North

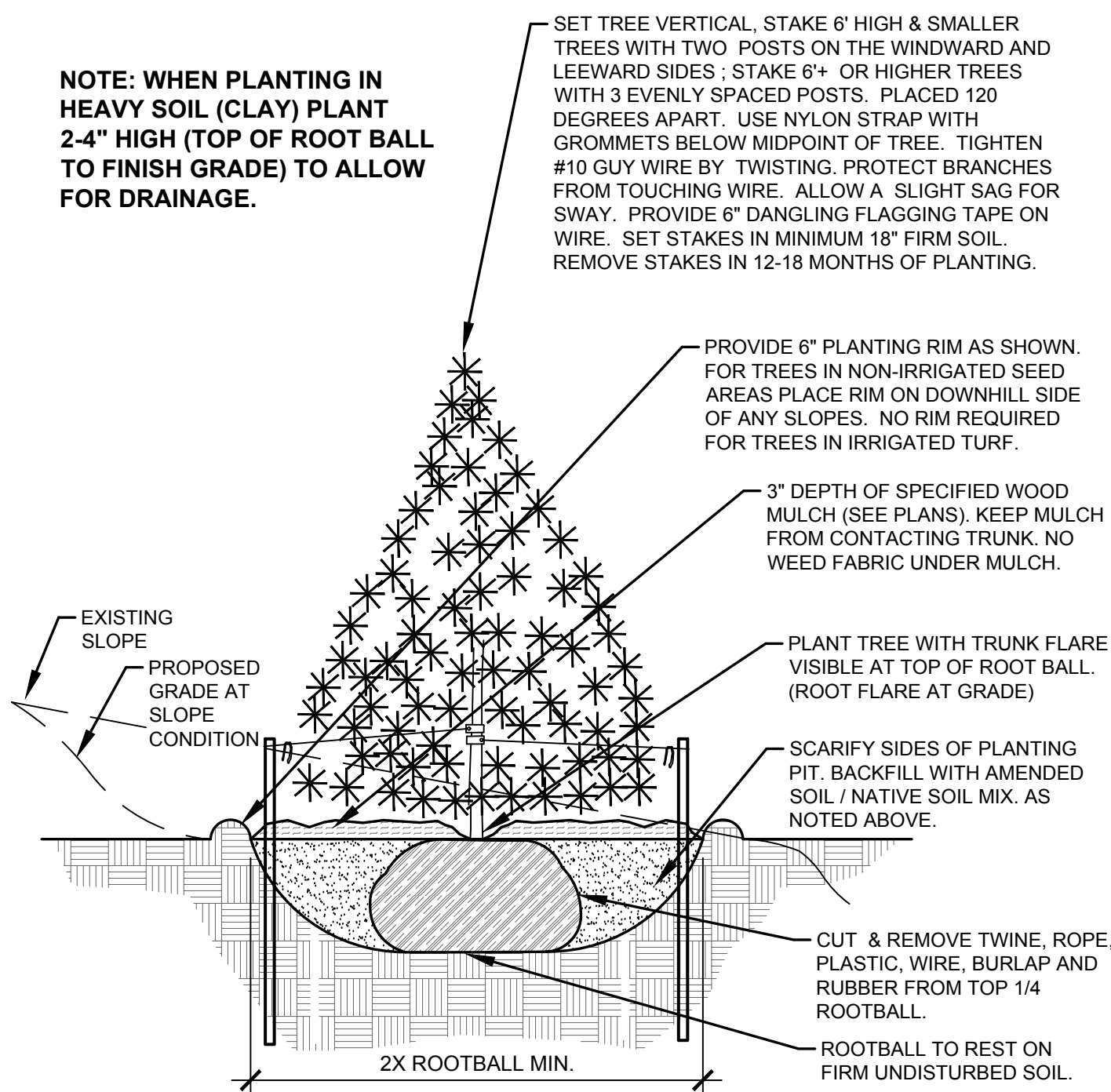
SEE SHEET L-5 FOR PLANTING AND GROUNDCOVER LEGEND

- NOTES:
- MARK NORTH SIDE OF TREE AT NURSERY AND PLANT TREE IN THE SAME ORIENTATION.
 - DON'T REMOVE OR CUT LEADER.
 - PRUNE DEAD, BROKEN, CROSSING, OR WEAK BRANCHES PRIOR TO PLANTING. DO NOT REMOVE TERMINAL BUDS THAT EXTEND TO TREE CROWN.
 - NO STRUCTURAL PRUNING OF TREE UNTIL AFTER ESTABLISHMENT PERIOD OF 2 GROWING SEASONS.
 - REMOVE ANY DOUBLE LEADERS UNLESS OTHERWISE NOTED.
 - KEEP TREE MOIST AND SHADED UNTIL PLANTING. AVOID FALL PLANTING IF POSSIBLE.
 - AMENDED BACK FILL SHALL BE 70% SOIL FROM PLANTING PIT AND 30% ORGANIC MATERIAL.
 - WRAP TRUNK ON EXPOSED SITES OR SPECIES WITH THIN BARK. USE ELECTRICAL TAPE, NOT TWINE. WRAP MID OCTOBER AND REMOVE BY END OF MARCH.
 - COORDINATE WITH CITY FORESTRY FOR CURRENT INSECT & DISEASE RECOMMENDATIONS PRIOR TO PLANTING.



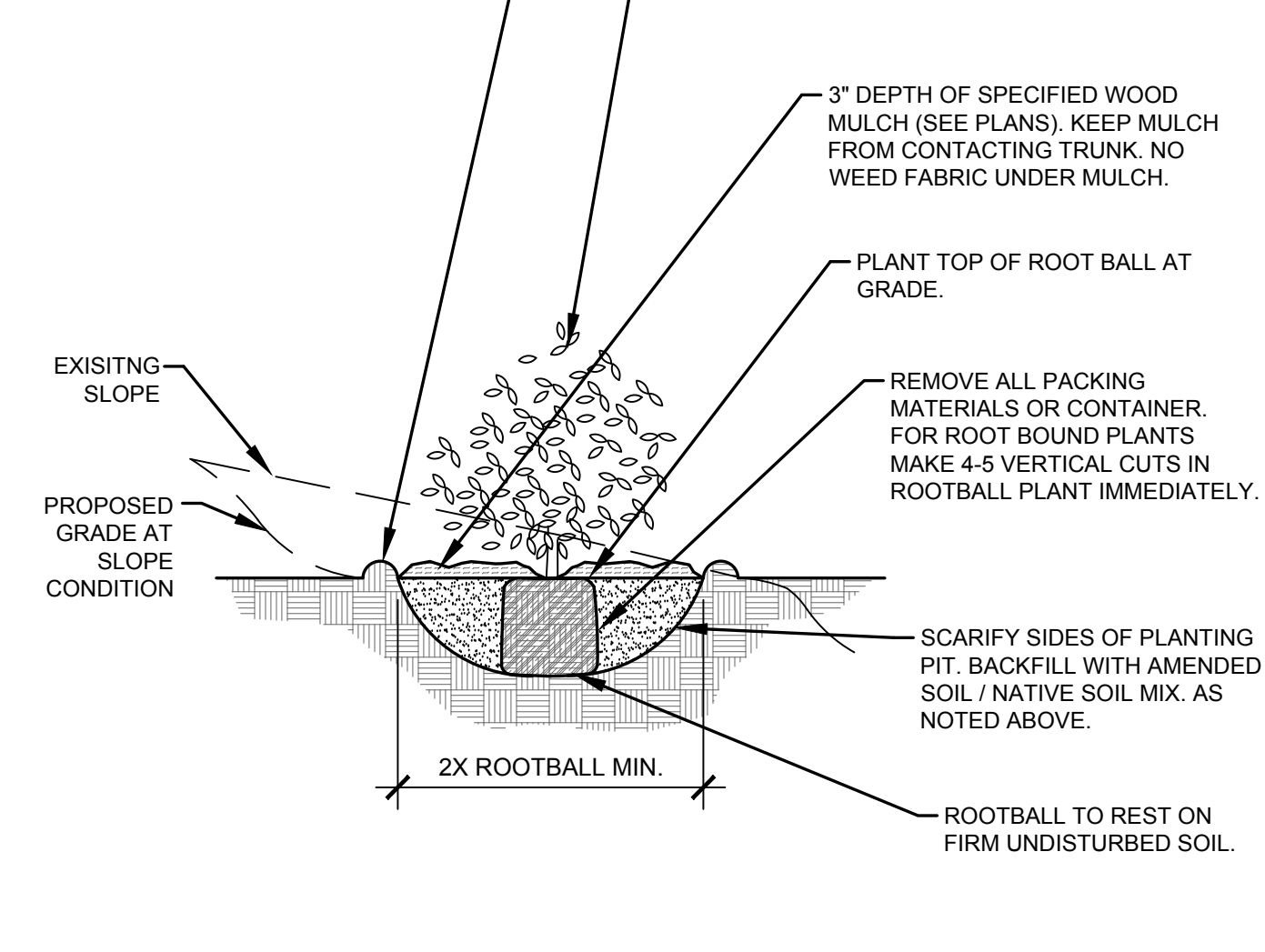
A DECIDUOUS TREE PLANTING DETAIL
NOT TO SCALE

- NOTES:
- MARK NORTH SIDE OF TREE AT NURSERY AND PLANT TREE IN THE SAME ORIENTATION.
 - DON'T REMOVE OR CUT LEADER.
 - PRUNE DEAD, OR BROKEN BRANCHES PRIOR TO PLANTING.
 - REMOVE ANY DOUBLE LEADERS UNLESS OTHERWISE NOTED.
 - KEEP TREE MOIST AND SHADED UNTIL PLANTING.
 - AMENDED BACK FILL SHALL BE 70% SOIL FROM PLANTING PIT AND 30% ORGANIC MATERIAL.
 - PINE AND SPRUCE SPECIES TO BE SPRAYED FOR IPS BARK BEETLE PRIOR TO PLANTING COORDINATE WITH CITY FORESTRY.
 - ALL TREES TO BE DEEP WATERED AT TIME OF PLANTING.



B EVERGREEN TREE PLANTING DETAIL
NOT TO SCALE

- NOTES:
- PRUNE DEAD, OR BROKEN BRANCHES PRIOR TO PLANTING.
 - KEEP PLANTS MOIST AND SHADED UNTIL PLANTING.
 - AMENDED BACK FILL SHALL BE 70% SOIL FROM PLANTING PIT AND 30% ORGANIC MATERIAL.
 - ALL SHRUBS IN ROCK AREAS TO RECEIVE A WOOD MULCH RING.
 - SHRUBS TO BE DEEP WATERED AT TIME OF PLANTING.



C SHRUB PLANTING DETAIL
NOT TO SCALE

LANDSCAPE INSTALLATION NOTES

- EDGING FOR TURF, PLANTING BEDS, ROCK, OR MULCH AREAS TO BE ROLL TOP STEEL EDGING WITH PINS OR APPROVED EQUAL. EDGING TO BE EXPOSED 12" +/- ABOVE FINISHED GRADES. INSTALL PER MANUFACTURE'S RECOMMENDATIONS.
- SOD TO BE BLUEGRASS SOD. LAY SOD WITH TIGHT STAGGERED EDGES. (IF APPLICABLE)
- ALL SEEDED TURF / SOD AREAS TO BE AMENDED WITH: 4 CUBIC YARDS OF ORGANIC SOIL AMENDMENT PER 1,000 SF. TILLED INTO THE TOP 6" OF SOIL. (IF APPLICABLE)
- LANDSCAPE WEED FABRIC TO BE INSTALLED PRIOR TO INSTALLING ROCK. INSTALL FABRIC STAPLES AT 5" O.C. SEAMS IN FABRIC TO BE OVERLAPPED 6" MIN. AND SECURED WITH STAPLES. (IF APPLICABLE)
- ROCK OR MULCH COVER SHALL BE CONTINUOUS UNDER ALL SHRUBS THROUGHOUT THE PROJECT SITE. INSTALL A MULCH RING AROUND ALL PLANT MATERIAL. IN ROCK AREAS AS FOLLOWS: TREES = 36" DIAMETER MULCH RING. SHRUBS = 18" DIAMETER MULCH RING. PERENNIALS AND ORNAMENTAL GRASSES = 12" MULCH RING. MULCH RINGS TO BE CASCADE MULCH. 3" IN DEPTH WITH NO WEED FABRIC NOTE: ALL TREES IN TURF AREAS TO RECEIVE A 24" DIAMETER MULCH RING. (IF APPLICABLE)
- ALL BOULDERS (IF APPLICABLE) TO BE BURIED 1/3 BELOW GRADE TO PROVIDE A NATURAL APPEARANCE.
- CONTRACTOR TO INSTALL ALL LANDSCAPE AS SHOWN ON THIS PLAN AND MAKE ANY ADJUSTMENTS NECESSARY DUE TO FIELD VARIATIONS OR ANY UTILITY CHANGES OR DEVIATIONS. MAJOR DEVIATIONS FROM THIS PLAN ARE TO BE APPROVED BY OWNER'S REPRESENTATIVE OR LANDSCAPE ARCHITECT.
- EXISTING SOIL IN ALL PLANTING BED AREAS TO BE AMENDED WITH THE FOLLOWING: 3 CUBIC YARDS OF ORGANIC SOIL AMENDMENT PER 1,000 SF TILLED INTO TOP 6" OF SOIL.
- IF APPLICABLE: ALL PARKING LOT ISLAND PLANTERS SHALL BE TILLED / REMOVED TO A DEPTH OF 30" AND REPLACED WITH GRADE 'B' TOPSOIL OR EQUAL.
- ALL NURSERY PLANT MATERIAL BOTANICAL NAME TAGS TO REMAIN ATTACHED TO THE PLANT MATERIAL. AFTER FINAL INSPECTION THEY ARE TO BE REMOVED.
- LANDSCAPE CONTRACTOR TO NOTIFY LANDSCAPE ARCHITECT IF DOWNSPOUTS OR STORM DRAINAGE FROM ADJACENT LOTS WILL ADVERSELY AFFECT LANDSCAPED AREAS ON THESE PLANS.

EXISTING TREE PROTECTION (IF APPLICABLE)
ANY EXISTING TREES OR PLANT MATERIAL NOTED TO BE PROTECTED ON THESE PLANS ARE TO BE PROTECTED FROM CONSTRUCTION DAMAGE. CONTRACTOR WILL TAKE RESPONSIBILITY FOR ANY DAMAGE TO EXISTING PROTECTED TREES OR LANDSCAPE.

ANY DAMAGE TO EXISTING TREES OR PLANT MATERIAL CALLED OUT TO BE PROTECTED SHALL BE REPLACED WITH EQUIVALENT PLANT MATERIAL.

BARK BEETLE PROTECTION NOTE (IF APPLICABLE)
LANDSCAPE CONTRACTOR TO PROVIDE PROTECTION FOR ALL NEW PINE TREES FOR BARK BEETLE PROTECTION. INSPECT ALL PINE TREES PRIOR TO PLANTING AND SPRAY TREES WITH THE FOLLOWING:
- ASTROGRAND FERTICHRIN
- APPLY TREATMENT 2 TIMES A YEAR FOR TWO CONSECUTIVE YEARS PER MANUFACTURE'S GUIDELINES

SLOPE PROTECTION (IF APPLICABLE)
CONTRACTOR TO INSTALL EROSION CONTROL BLANKETS OR EQUAL ON SEEDED SLOPES 3:1 AND STEEPER. SECURE BLANKETS TO SLOPE PER MANUFACTURE'S RECOMMENDATIONS.

EROSION CONTROL BLANKET TO CONTAIN 100% AGRICULTURAL STRAW BLANKET WITH PHOTO-DEGRADABLE NETTING ON BOTH SIDES.

CONTRACTOR TO PROVIDE 4-8" DIAMETER COBBLE (WITH LANDSCAPE FABRIC) FOR ALL CURB INLETS INTO DETENTION AREAS IF APPLICABLE. PROVIDE A SWALE FROM INLET TO DETENTION AREA A MINIMUM OF 2' WIDE AND MAXIMUM 3' WIDE. (IF APPLICABLE)

LANDSCAPE CONTRACTOR NOTES

- STOCKPILE SOIL (IF APPLICABLE) ON SITE AS SHOWN ON PLANS. STOCKPILED SOIL TO BE USED FOR FILL SOIL FOR LANDSCAPE AREAS AS NEEDED.
- REMOVE WEEDS, DEAD TREES / SHRUBS, DEBRIS FROM SITE PRIOR TO BEGINNING LANDSCAPE CONSTRUCTION.
- PLANT QUANTITIES IN PLANT LEGEND ARE FOR CONVENIENCE ONLY. CONTRACTOR TO INSTALL ALL PLANT MATERIAL PER PLANS.
- INSTALLATION OF PLANT MATERIALS TO BE IN ACCORDANCE WITH THE ASSOCIATED LANDSCAPE CONTRACTORS OF COLORADO HANDBOOK (ALCC), 2007 OR CURRENT EDITION FOR ALL LANDSCAPE CONSTRUCTION ON THIS SITE.
- LANDSCAPE CONTRACTOR IS RESPONSIBLE FOR THEFTS OR DAMAGE TO ALL PLANT MATERIAL AFTER PLANT MATERIAL IS DELIVERED TO THE JOB SITE.
- CONTRACTOR IS RESPONSIBLE FOR CONTACTING LANDSCAPE ARCHITECT FOR ALL REQUIRED INSPECTIONS. PROVIDE 48 HOURS MINIMUM NOTICE PRIOR TO SCHEDULE INSPECTIONS. INSPECTIONS TO INCLUDE:
 - PLANT PLACEMENT, PLANT SPECIES, MATERIAL SIZE, AND QUALITY.
 - HARDSCAPE MATERIAL PLACEMENT / PLANTING BED EDGING.
 - IRRIGATION MAIN LINE / HEAD PLACEMENT INSPECTION (AS APPLICABLE).

SEEDING NOTES

IRRIGATED NATIVE SEED TO BE SHARP BROS. SEED CO. "LOW GROW HIGH ALTITUDE MIX". APPLY SEED AT 2 LBS/1,000 SF USING A ONE STEP HYDRO-SEED PROCESS. SEE BELOW FOR WHAT THE MIX CONTAINS.

WHEATGRASS, WESTERN	NEBRASKA SEDGE
44%	2.5%
WHEATGRASS, STREAMBANK	ALKALAI SACATON
16%	1.5%
BOTTLEBRUSH, SQUIRRELTAIL	POW. MANNAGRASS
13%	1%
CANADIAN WILDRYE	BALTIC RUSH
11%	5%
SWITCHGRASS	PATH RUSH
10%	5%

SOIL IN IRRIGATED SEED AREAS TO BE AMENDED WITH: A1 ORGANICS "CLASS 1 BIOCOMP" AT 4 C.Y./1000 SF TILLED INTO TOP 4-6" OF SOIL PRIOR TO SEEDING. USE SUPER CROP FERTILIZER 20-20-10 AT 4 LBS PER 1,000 SF 2-3 WEEKS AFTER EMERGENCE. ADD 1 LB. NITROGEN PER 1000 SF MID TO LATE JUNE, EARLY TO MID AUGUST, AND LATE SEPTEMBER.

NON-IRRIGATED NATIVE SEED TO BE ARKANSAS VALLEY SEED, INC. "RIPARIAN MIX". APPLY SEED AT 2 LBS/1,000 SF USING A ONE STEP HYDRO-SEED PROCESS. SEE BELOW FOR WHAT THE MIX CONTAINS.

WHEATGRASS, WESTERN	NEBRASKA SEDGE
44%	2.5%
WHEATGRASS, STREAMBANK	ALKALAI SACATON
16%	1.5%
BOTTLEBRUSH, SQUIRRELTAIL	POW. MANNAGRASS
13%	1%
CANADIAN WILDRYE	BALTIC RUSH
11%	5%
SWITCHGRASS	PATH RUSH
10%	5%

SOIL IN NON-IRRIGATED SEED AREAS TO BE AMENDED WITH: 1/3 HIGH QUALITY TOP SOIL, 2/3 COW MANURE, AND 1/3 NATIVE SOIL AT 4 C.Y./1000 SF TILLED INTO TOP 4-6" OF SOIL PRIOR TO SEEDING. 2-3 WEEKS AFTER EMERGENCE ADD SUPER CROP FERTILIZER 20-20-10 AT 4 LBS PER 1,000 SF. ADD 1 LB. NITROGEN PER 1000 SF IN MID TO LATE JUNE, IN EARLY TO MID AUGUST, AND LATE SEPTEMBER.

ANY EXISTING SEEDED AREAS THAT ARE DISTURBED NEAR PROPERTY BOUNDARIES TO BE SEEDED WITH THE FOOTHILLS MIX USING A ONE STEP HYDRO-MULCH.

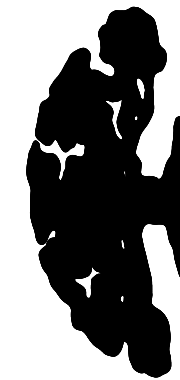
ANY BARE AREAS LARGER THAN A SQUARE FOOT AFTER SEED GERMINATION TO BE SEEDED TO FILL IN SUCH AREAS.

PLANTING LEGEND

ABBR. QTY. BOTANICAL NAME			COMMON NAME	SIZE	NOTES
DECIDUOUS TREES					
ABM	2	Acer x freemanii 'Autumn Blaze'	Maple, Autumn Blaze	1-1/2"	Z=4, 6.5K
FAP	27	Fraxinus americana 'Autumn Purple'	Ash, Autumn Purple	1-1/2"	Z=4, 6.5K, M
FPM	8	Fraxinus pennsylvanica 'Marshall'	Ash, Marshal Seedless	1-1/2"	Z=3, 8.5K, M
MSS	12	Malus 'Spring Snow'	Crabapple, Spring Snow	1-1/2"	F, Z=4, 8.5K, M
EVERGREEN TREES					
PIE	12	Pinus edulis	Pine, Pinyon	6'	X, R, D, Z=3, 7.5K, L
PIP	6	Picea pungens	Spruce, Colorado Blue	6'	R, D, Z=3, 10K, M, H
PON	66	Pinus ponderosa	Pine, Ponderosa	6'	R, D, Z=3, 9.5K, L
DECIDUOUS SHRUBS					
POA	40	Potentilla fruticosa 'Abbotswood'	Potentilla, Abbotswood	5 Gal	R, D, F, Z=2, 10K

GROUND COVER LEGEND

SYMBOL	DESCRIPTION	QUANTITY
	1-1/2" CIMARRON GRANITE ROCK 3" IN DEPTH WITH WEED FABRIC	46,813 SF
	1-1/2" COTTONWOOD RIVER ROCK 3" IN DEPTH WITH WEED FABRIC	4,780 SF
	5-12" & 2-4" MIX OF ARKANSAS TAN WITH 3/4" ARKANSAS TAN ROCK INFILL, 3" IN DEPTH WITH WEED FABRIC	3,502 SF
	CASCADE MULCH 3" IN DEPTH WITH NO WEED FABRIC	866 SF
	IRRIGATED NATIVE SEED LOW GROW MIX (PROVIDE EROSION CONTROL BLANKETS ON SLOPES 3:1 OR STEEPER)	226,363 SF
	NON-IRRIGATED NATIVE SEED TO BE RIPARIAN MIX (PROVIDE EROSION CONTROL BLANKETS ON SLOPES 3:1 OR STEEPER)	120,425 SF
	DECORATIVE BOULDER	35 TOTAL
	STEEL EDGING	803 LF



ALL AMERICAN
LANDSCAPE ARCHITECTURE & IRRIGATION DESIGN
RESIDENTIAL & COMMERCIAL LANDSCAPE INSTALLATION
1925 AEROPOLAZA DRIVE
COLORADO SPRINGS, CO 80916
719.637.6313

DATE	REVISION DESCRIPTION
10/11/18	Update base and grading.

☐ FOR CONSTRUCTION

☒ NOT FOR CONSTRUCTION



HANNAH RIDGE
FILING 5-7, COMMON AREAS

JOB NUMBER
2346-0718

DATE
8/21/18

DRAWN BY
MB

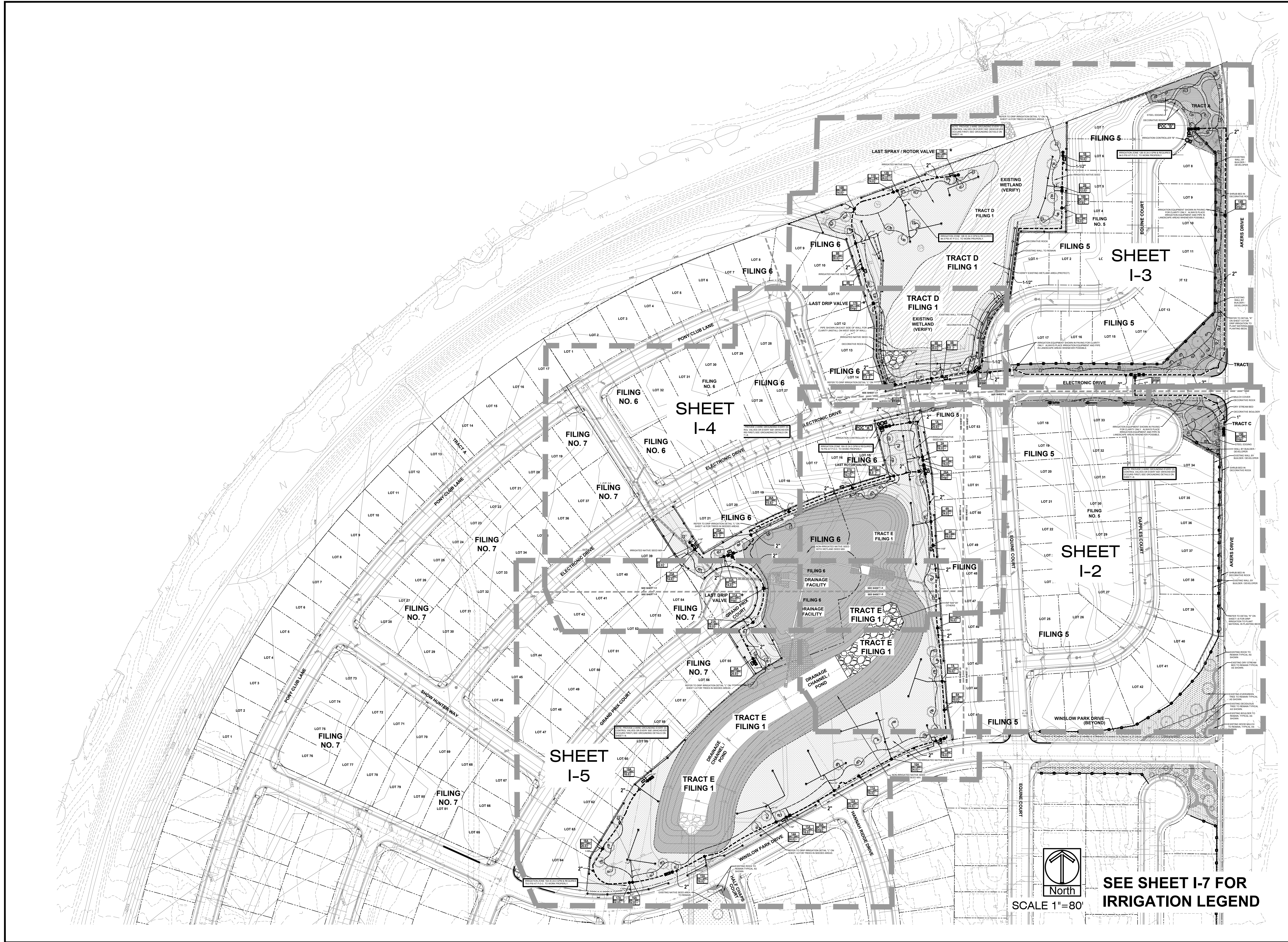
DRAWING DESCRIPTION

**PLANTING DETAILS
& NOTES**

SHEET #

L-5

© 2013 BY ALL AMERICAN • ALL RIGHTS RESERVED



ALL AMERICAN
LANDSCAPE ARCHITECTURE & IRRIGATION DESIGN
RESIDENTIAL & COMMERCIAL LANDSCAPE INSTALLATION
1925 AEROPOLAZA DRIVE
COLORADO SPRINGS, CO 80916
719.537.4313

DATE	REVISION DESCRIPTION
10/11/18	Revise Irrigation per updated base and grading

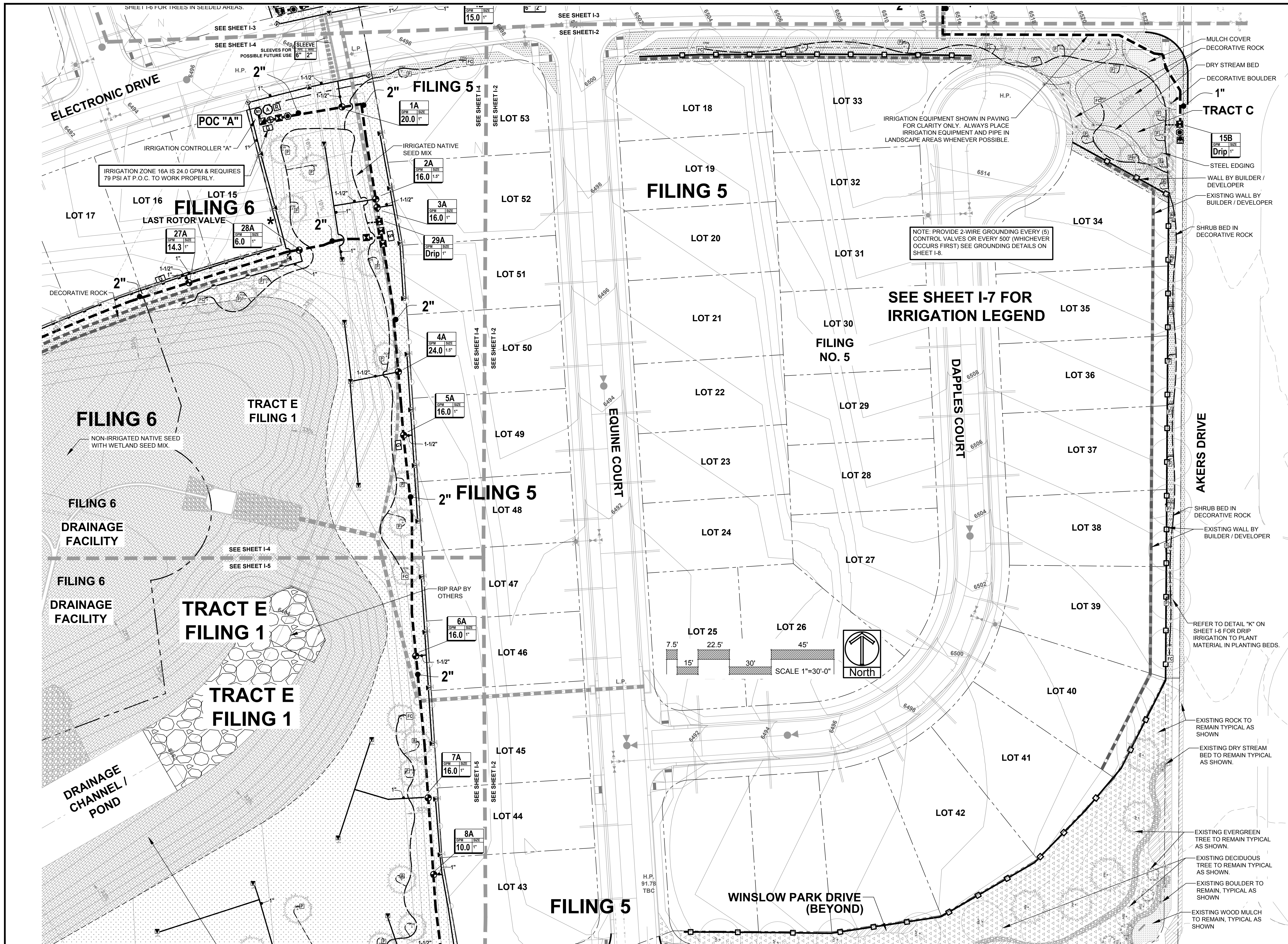
☐ FOR CONSTRUCTION
☒ NOT FOR CONSTRUCTION



HANNAH RIDGE
FILING 5-7, COMMON AREAS

JOB NUMBER	2346-0718
DATE	8/21/18
DRAWN BY	MB
DRAWING DESCRIPTION	OVERALL IRRIGATION PLAN
SHEET #	I-1
© 2013 BY ALL AMERICAN • ALL RIGHTS RESERVED	

SEE SHEET I-7 FOR
IRRIGATION LEGEND



ALL AMERICAN
LANDSCAPE ARCHITECTURE & IRRIGATION DESIGN
RESIDENTIAL & COMMERCIAL LANDSCAPE INSTALLATION
1925 AEROPOLAZA DRIVE
COLORADO SPRINGS, CO 80916
719-637-4313

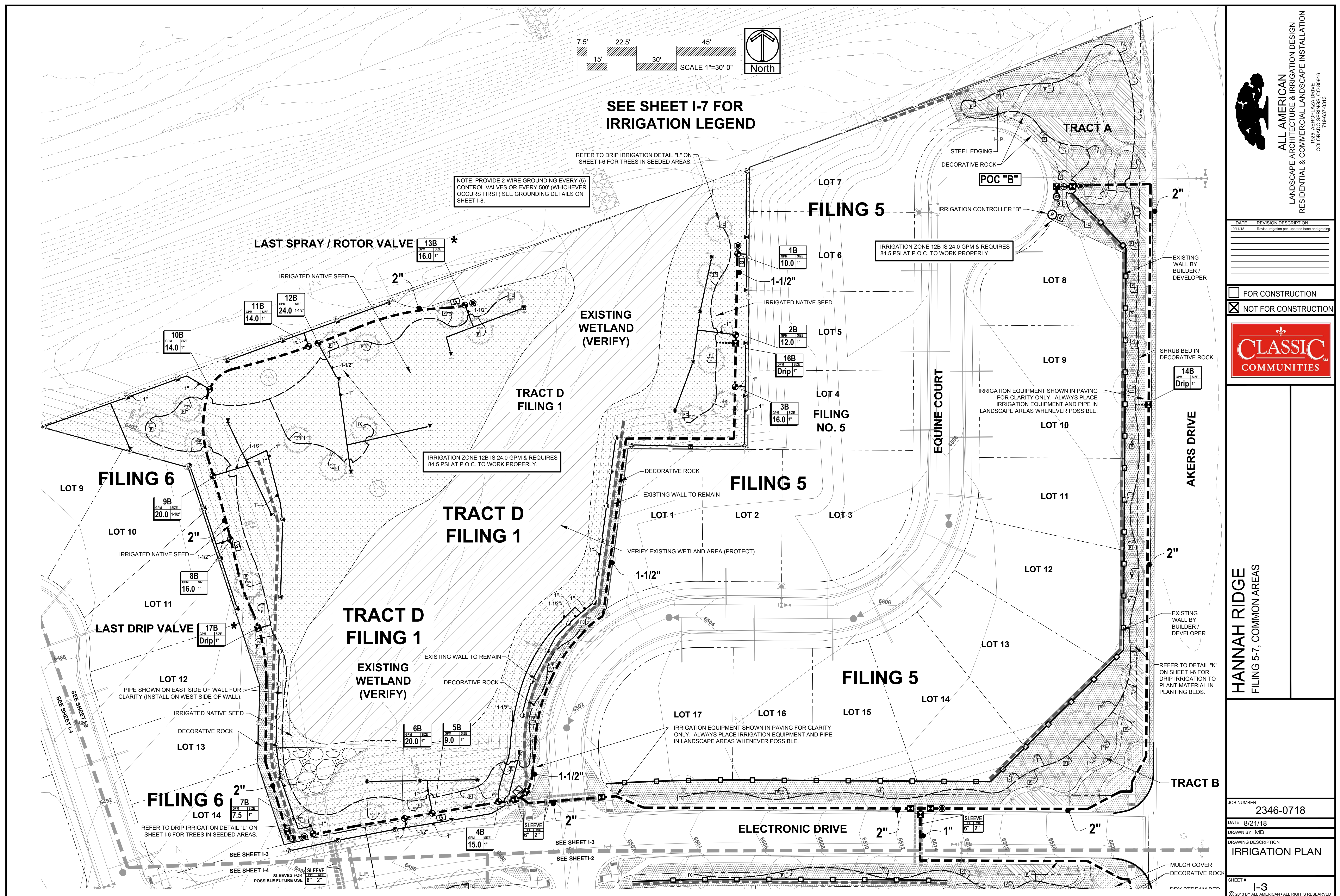
DATE	REVISION DESCRIPTION
10/11/18	Revised irrigation per updated base and grading

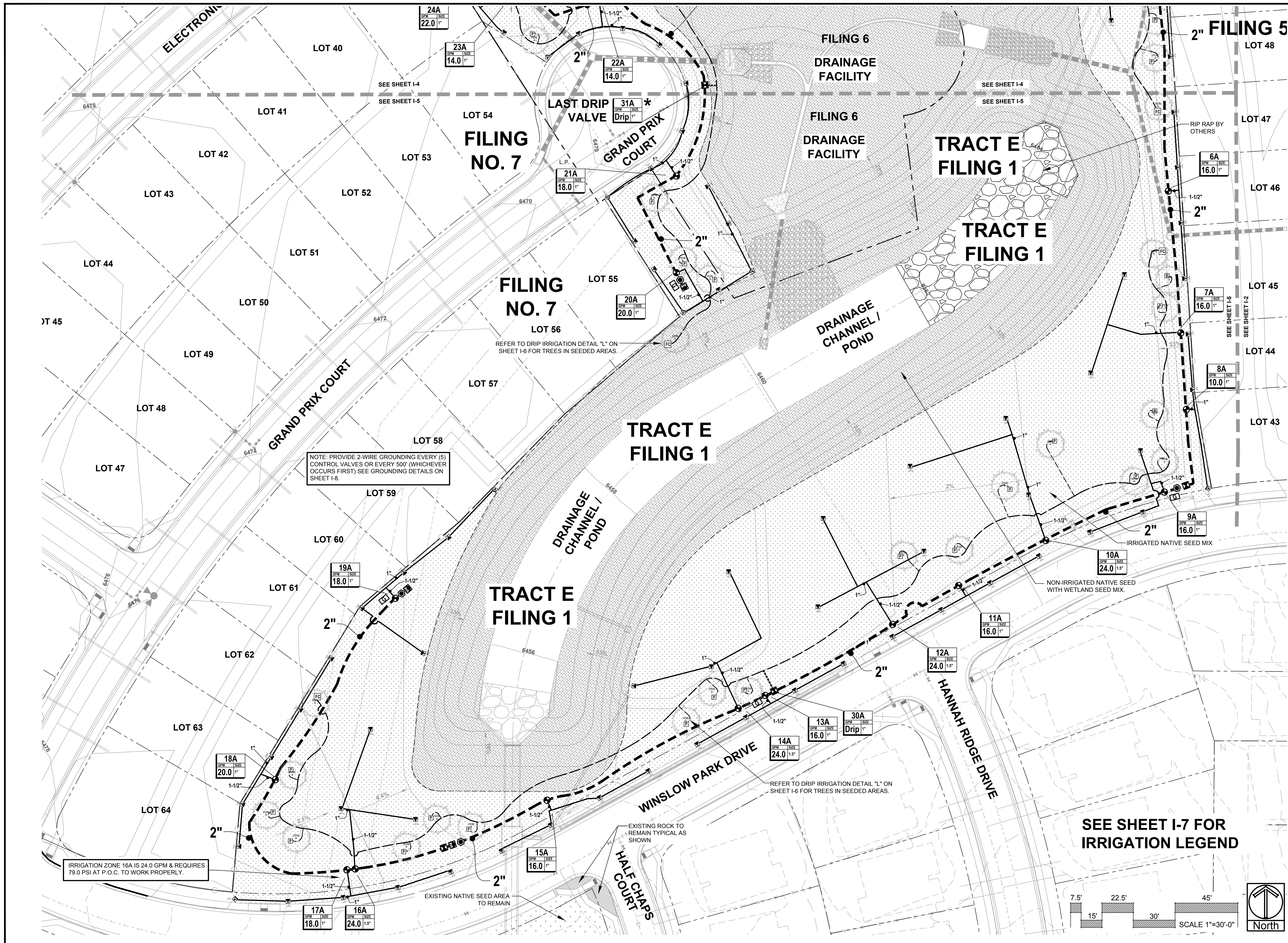
☐ FOR CONSTRUCTION
☒ NOT FOR CONSTRUCTION




HANNAH RIDGE
FILING 5-7, COMMON AREAS

JOB NUMBER	2346-0718
DATE	8/21/18
DRAWN BY	MB
DRAWING DESCRIPTION	IRRIGATION PLAN
SHEET #	I-2
© 2013 BY ALL AMERICAN • ALL RIGHTS RESERVED	








ALL AMERICAN
LANDSCAPE ARCHITECTURE & IRRIGATION DESIGN
RESIDENTIAL & COMMERCIAL LANDSCAPE INSTALLATION
1925 AEROPOLAZA DRIVE
COLORADO SPRINGS, CO 80916
719.637.4313

DATE	REVISION DESCRIPTION
10/11/18	Revise Irrigation per updated base and grading

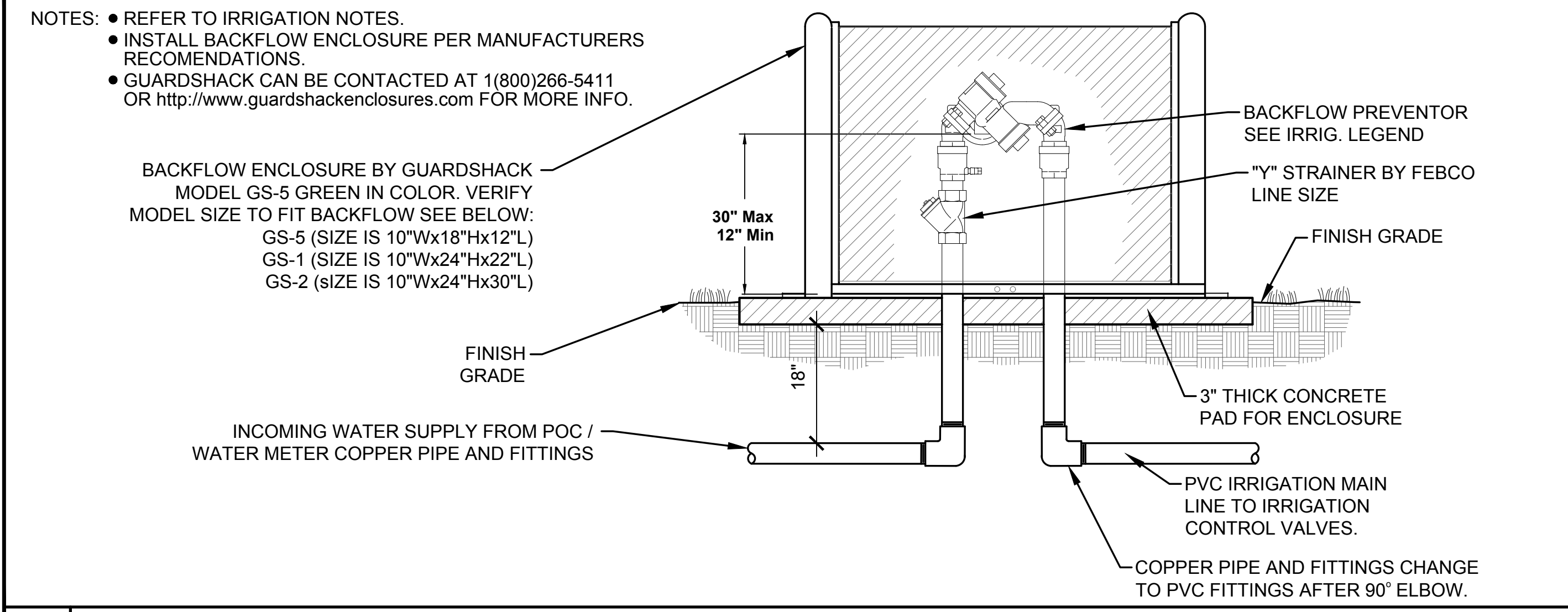
☐ FOR CONSTRUCTION
☒ NOT FOR CONSTRUCTION



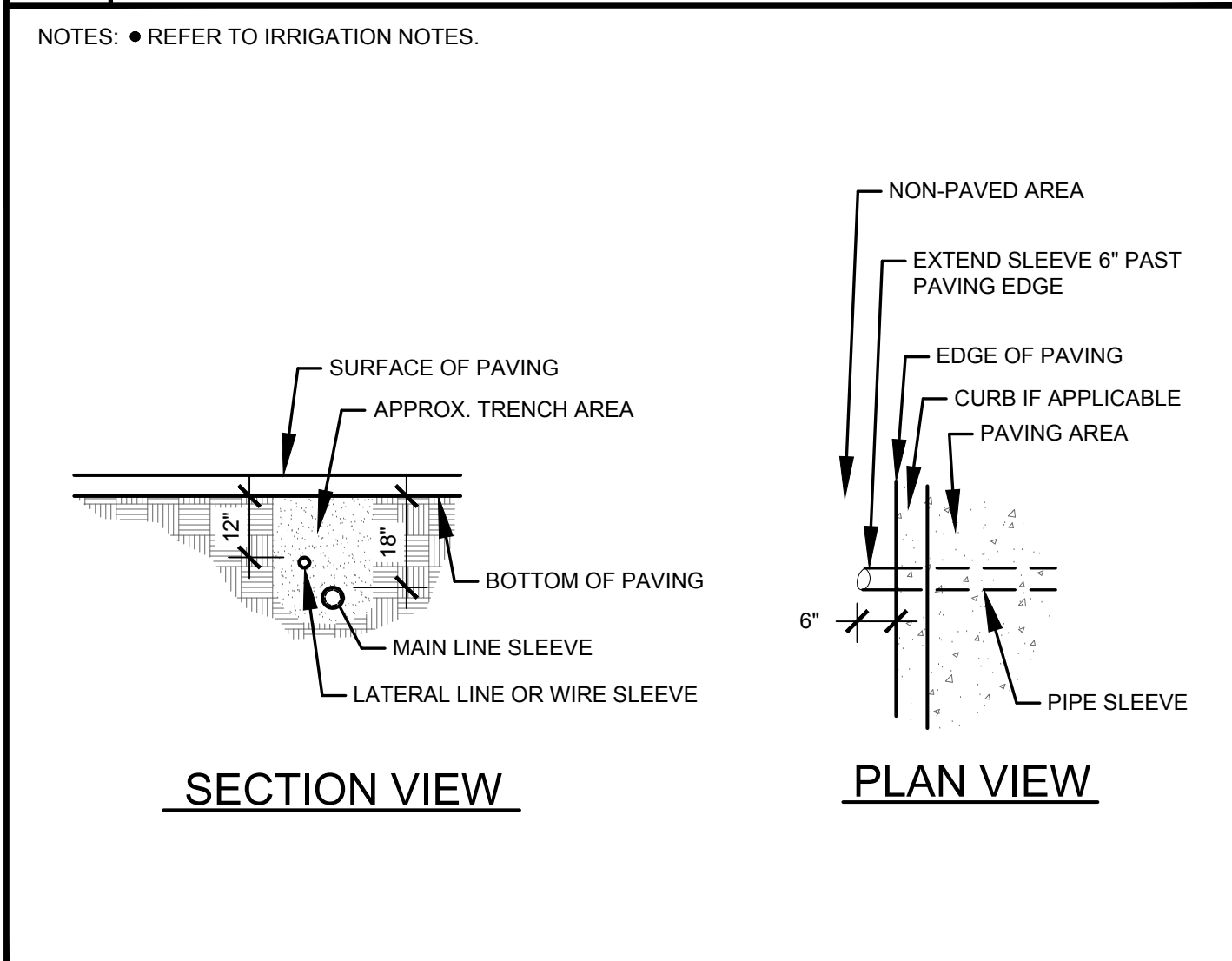
CLASSIC
COMMUNITIES

HANNAH RIDGE
FILING 5-7, COMMON AREAS

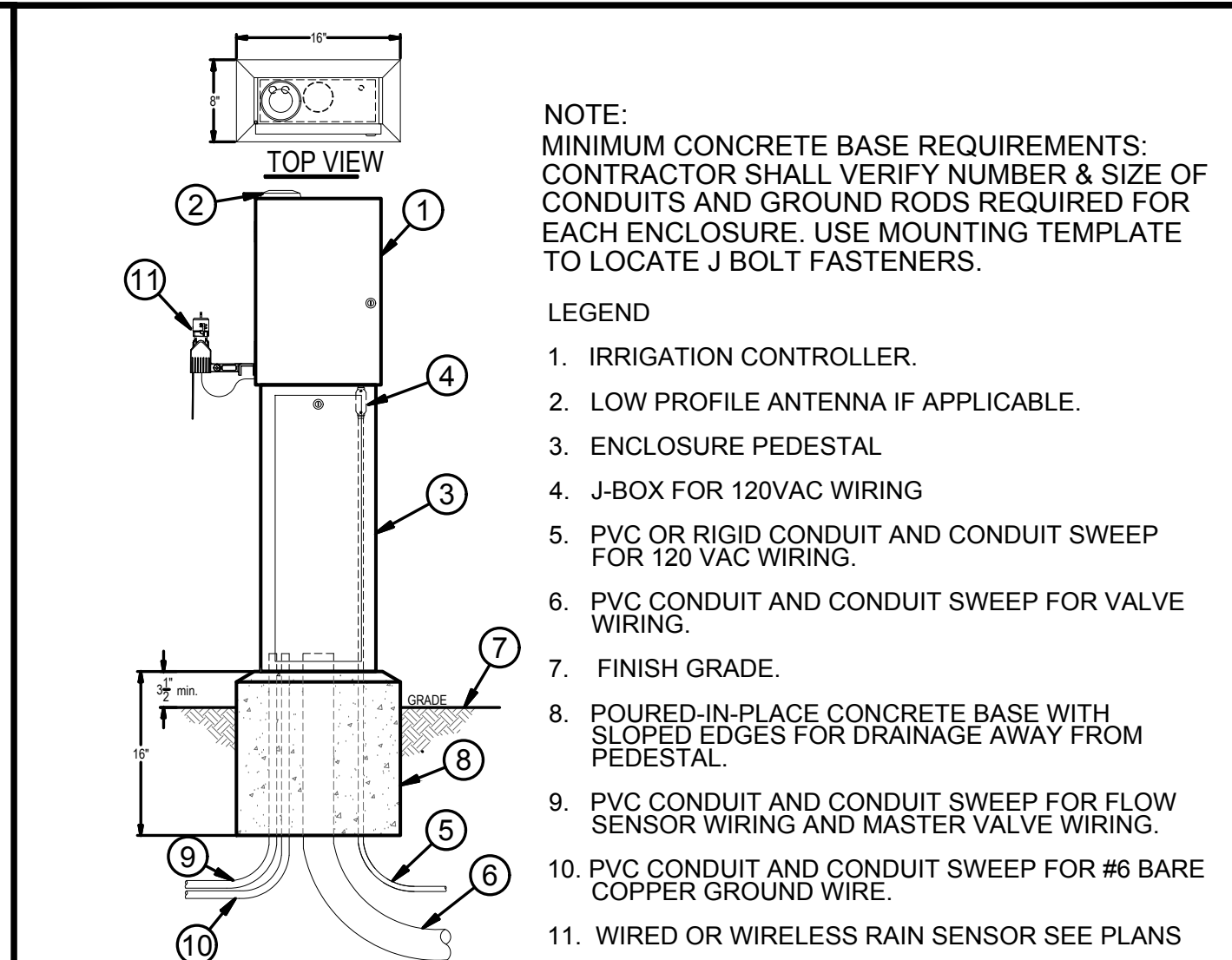
JOB NUMBER 2346-0718
DATE 8/21/18
DRAWN BY MIB
DRAWING DESCRIPTION IRRIGATION PLAN
SHEET # I-5
© 2013 BY ALL AMERICAN • ALL RIGHTS RESERVED



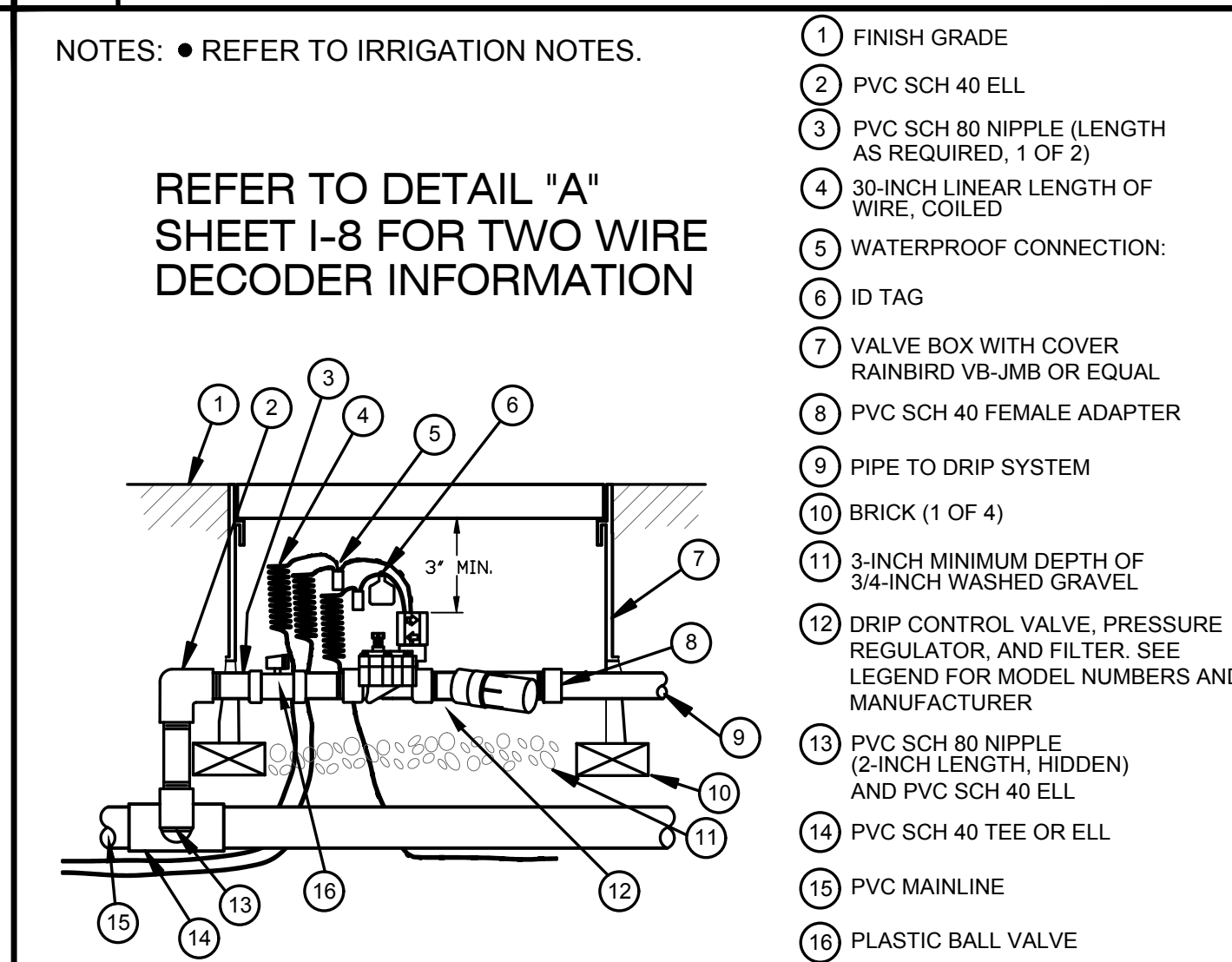
A OUTDOOR BACKFLOW PREVENTOR IN ENCLOSURE
NTS



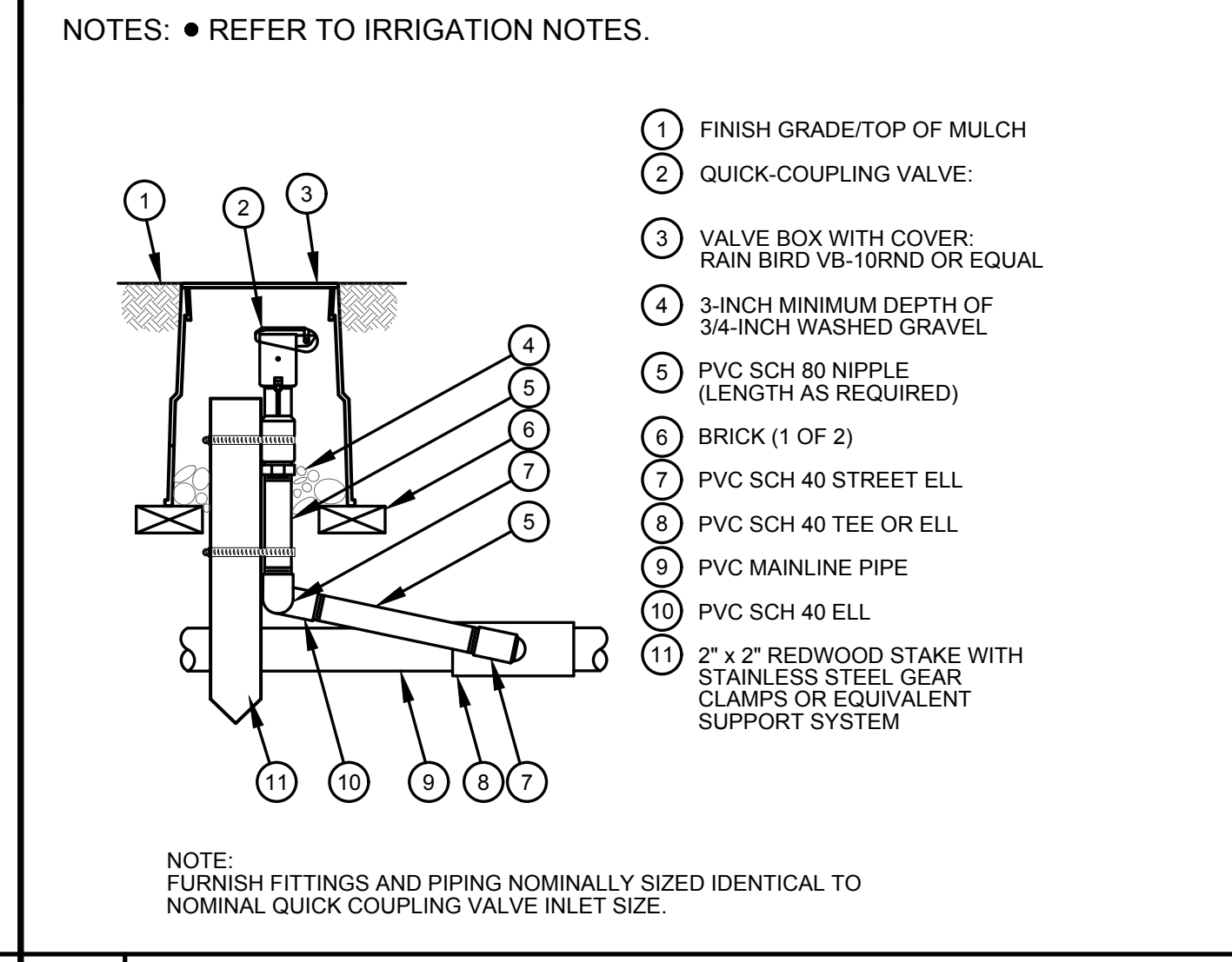
D PIPE SLEEVING
NTS



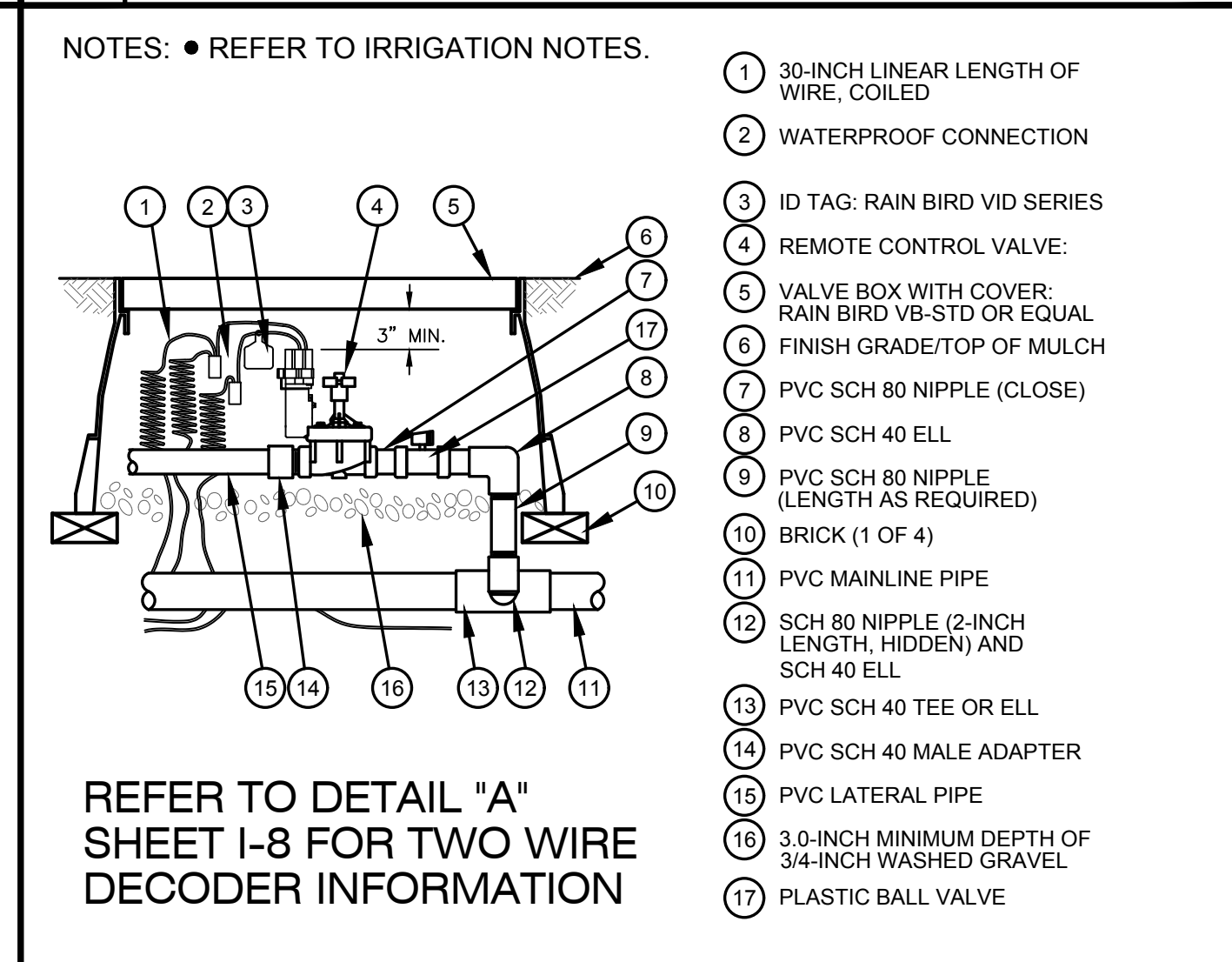
E IRRIGATION CONTROLLER PEDESTAL
NTS



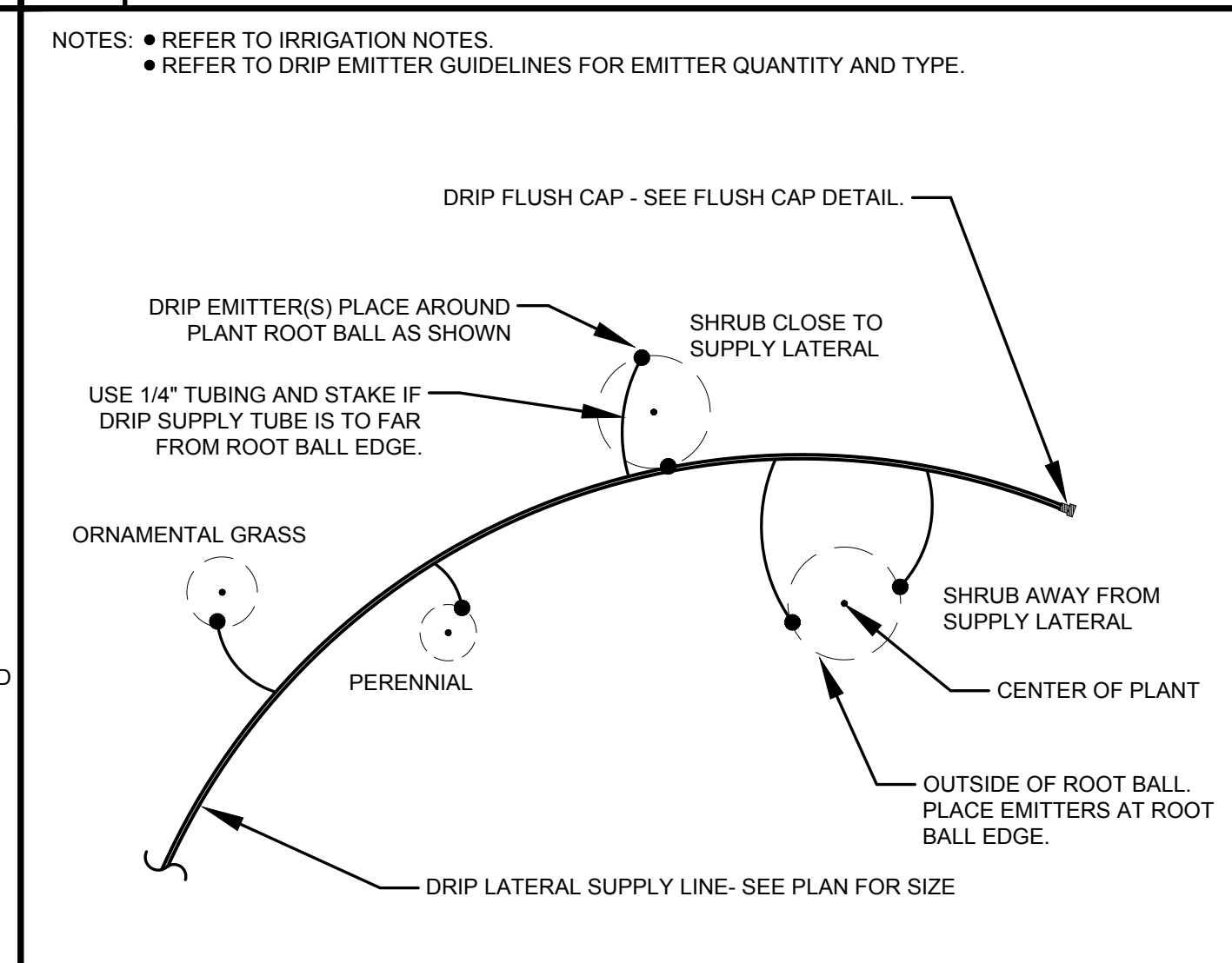
J DRIP CONTROL VALVE / FILTER ASSEMBLY
NTS



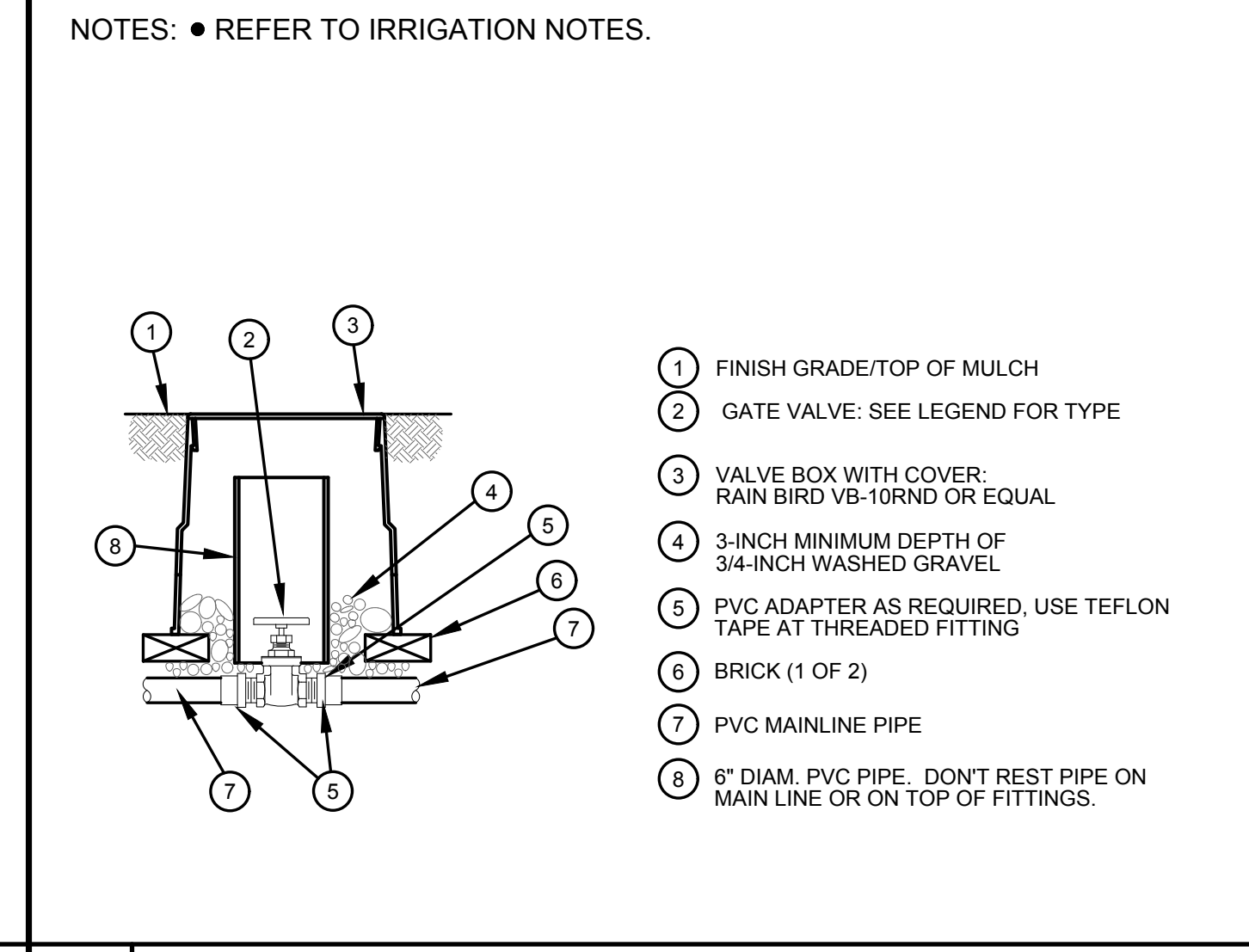
B QUICK COUPLER VALVE
NTS



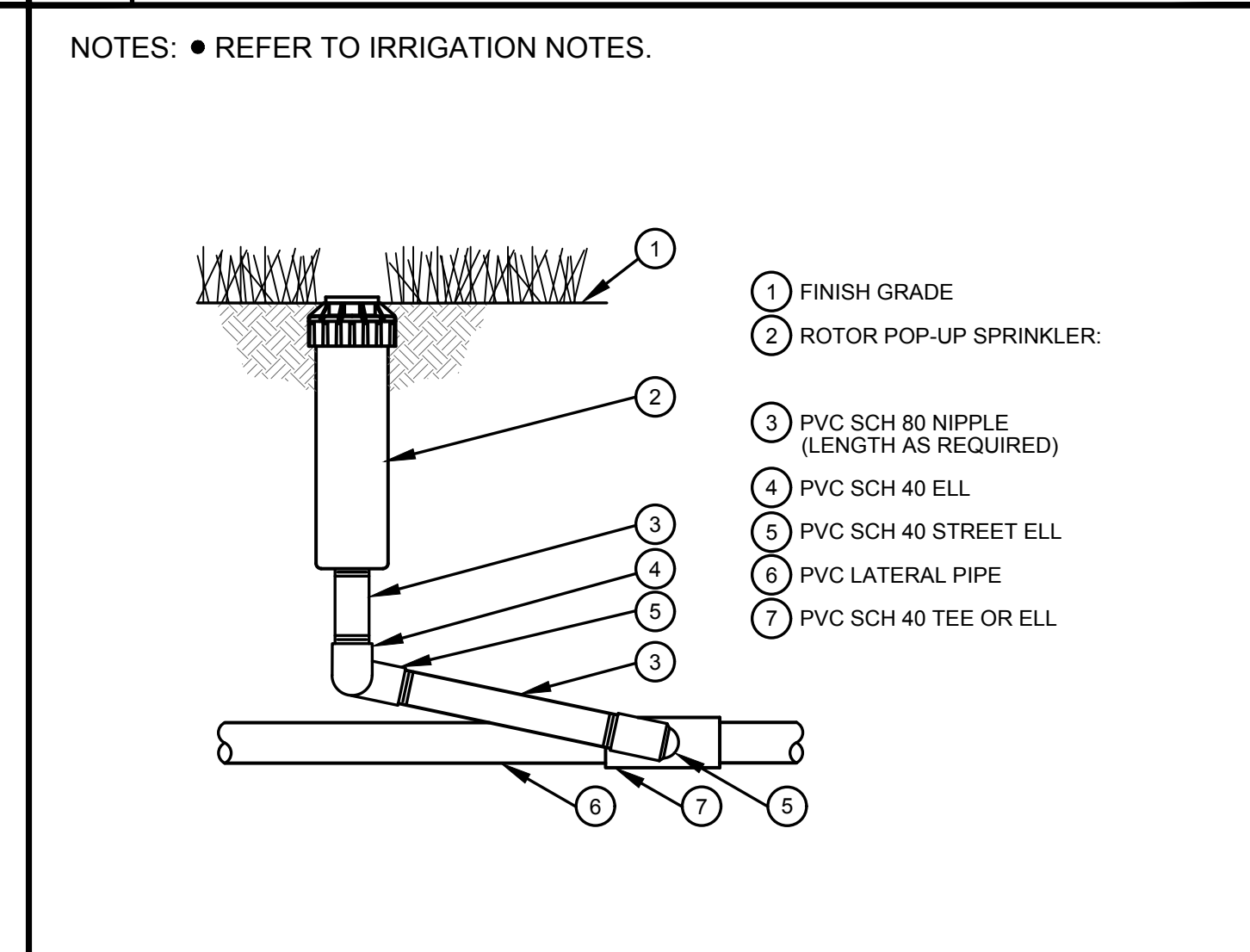
F REMOTE CONTROL VALVE
NTS



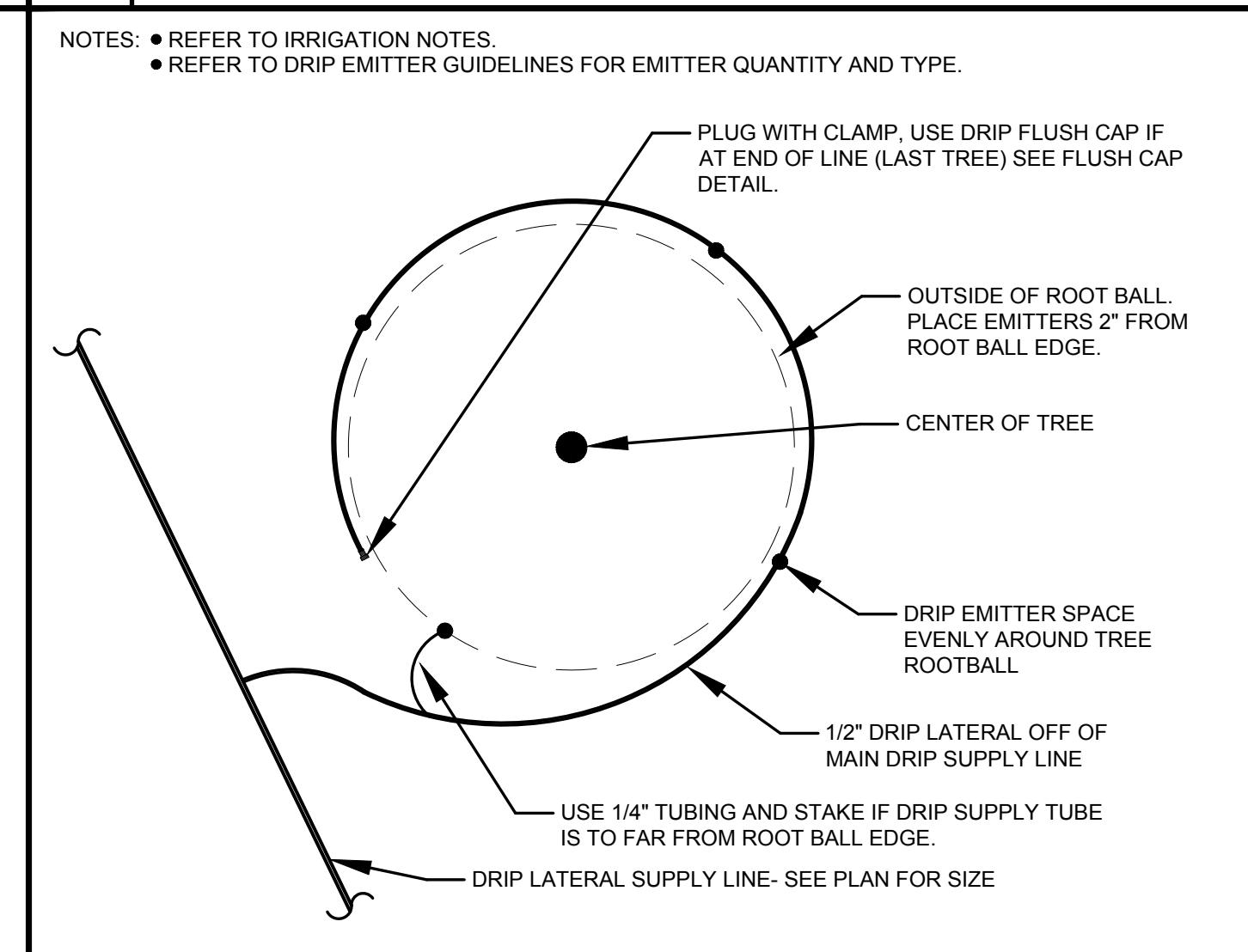
K SHRUB, ORN. GRASS, & PERENNIAL DRIP EMITTER PLACEMENT
NTS



C GATE VALVE
NTS




H ROTOR HEAD
NTS



L TREE DRIP EMITTER PLACEMENT
NTS


SEE I-7 FOR 1/4" TUBING DRIP STAKE AND FLUSH CAP DETAILS



ALL AMERICAN
LANDSCAPE ARCHITECTURE & IRRIGATION DESIGN
RESIDENTIAL & COMMERCIAL LANDSCAPE INSTALLATION
1925 AEROPOLAZA DRIVE
COLORADO SPRINGS, CO 80916
719.637.4313

DATE	REVISION DESCRIPTION
10/11/18	Revise Irrigation per updated base and grading

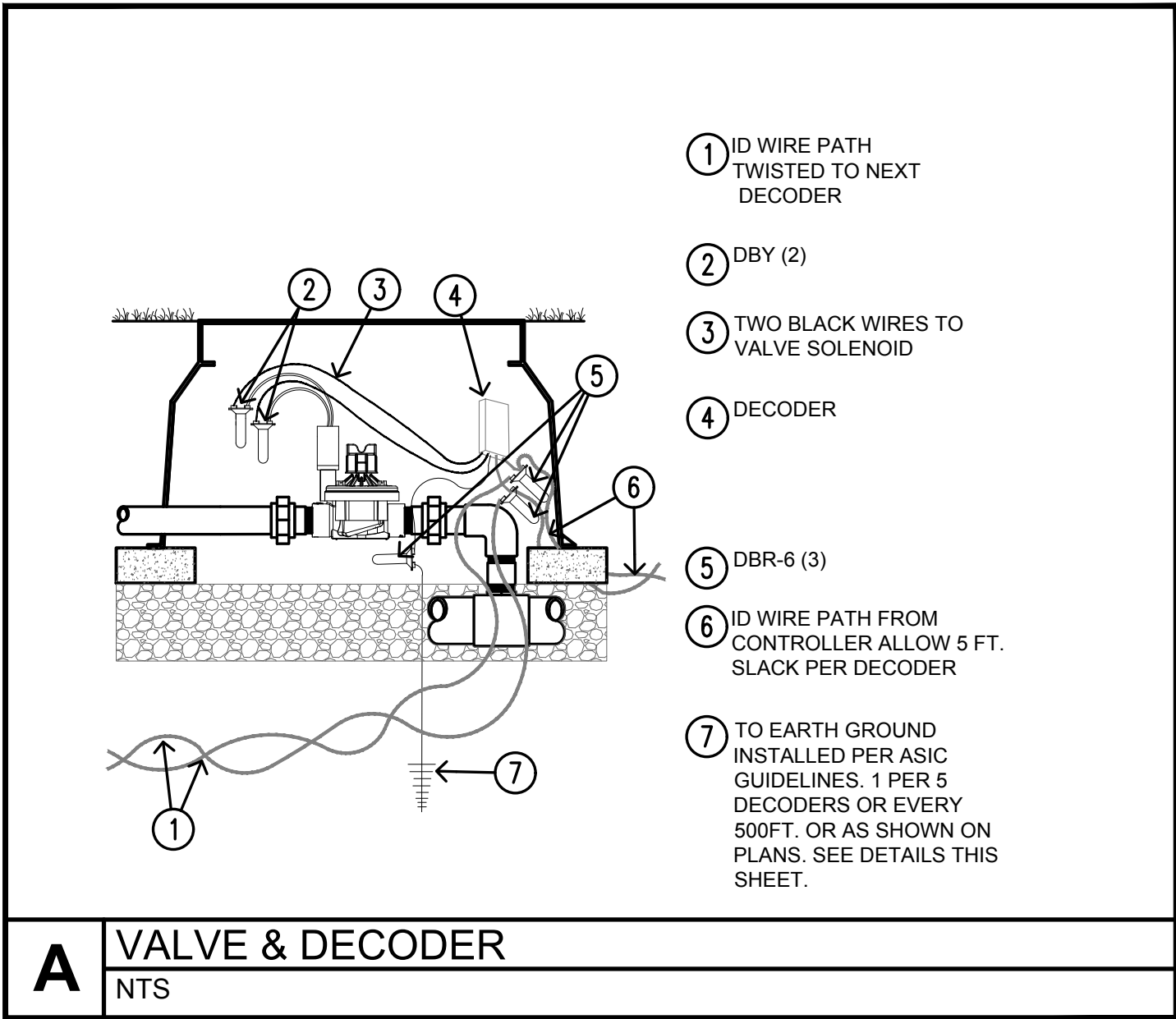
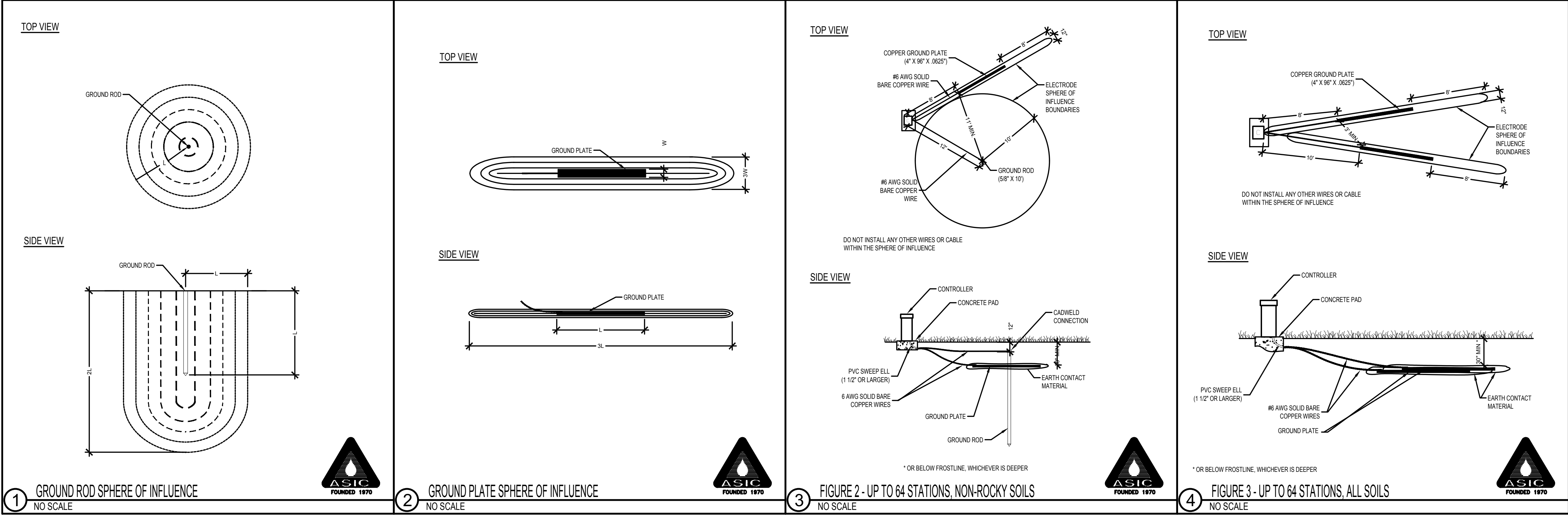
☐ FOR CONSTRUCTION
☒ NOT FOR CONSTRUCTION



CLASSIC
COMMUNITIES

HANNAH RIDGE
FILING 5-7, COMMON AREAS

JOB NUMBER	2346-0718
DATE	8/21/18
DRAWN BY	MB
DRAWING DESCRIPTION	IRRIGATION DETAILS
SHEET #	I-6
© 2013 BY ALL AMERICAN • ALL RIGHTS RESERVED	



MANUFACTURER NOTES (DETAILS 1-4 THIS SHEET)

- THESE NOTES ARE FOR THE PRODUCTS LISTED IN THE GROUNDING DETAILS SHOWN ON THIS SHEET.
- EARTH CONTACT MATERIAL TO BE POWERSET (PAIGE PART NUMBER 1820058) OR POWERFILL (PAIGE PART NUMBER 1820059 FOR NON POROUS SOILS).
- CADWELL CONNECTIONS TO BE FROM PAIGE WIRE.
- GROUNDING PLATES TO BE 4" X 96" AND 4" X 36" PAIGE PART NUMBERS 182119L AND 182201
- GROUNDING RODS TO BE COPPER CLAD GROUND ROD PAIGE PART NUMBER 182007 (5/8" DIA. X 10' LONG)
- #6 AWG SOLID BARE COPPER WIRE PAIGE PART NUMBER 160678
- CONTRACTOR TO INSTALL ALL THESE PRODUCTS ACCORDING TO MANUFACTURERS RECOMMENDATIONS

THE ABOVE IS AVAILABLE FROM PAIGE ELECTRIC CO. LP
2683 W. LAKE VAN NESS CIRCLE
FRESNO, CA 93711

CONTACT: VINCE NOLETTI
PHONE: 559-431-2346 FAX: 559-431-2574
EMAIL: VNOLLETTI@PAIGEELECTRIC.COM

WIRE NOTES

- NOTE: ALL WIRE CONNECTIONS TO TWO WIRE AND DECODERS TO BE DBR-6 CONNECTORS.
- DBY-6 CONNECTORS CAN BE USED FROM THE DECODER WIRES LEADING TO THE IRRIGATION CONTROL VALVE SOLENOID WIRES ONLY. (SEE DETAILS ON THIS SHEET FOR CLARITY)



ALL AMERICAN
LANDSCAPE ARCHITECTURE & IRRIGATION DESIGN
RESIDENTIAL & COMMERCIAL LANDSCAPE INSTALLATION
1925 AEROPOLAZA DRIVE
COLORADO SPRINGS, CO 80916
719-537-3313

DATE	REVISION DESCRIPTION
10/11/18	Revise Irrigation per updated base and grading

☐ FOR CONSTRUCTION

☒ NOT FOR CONSTRUCTION



HANNAH RIDGE
FILING 5-7, COMMON AREAS

JOB NUMBER
2346-0718

DATE
8/21/18

DRAWN BY
MIB

DRAWING DESCRIPTION
IRRIGATION
DETAILS & NOTES

SHEET #
1-8

© 2013 BY ALL AMERICAN • ALL RIGHTS RESERVED