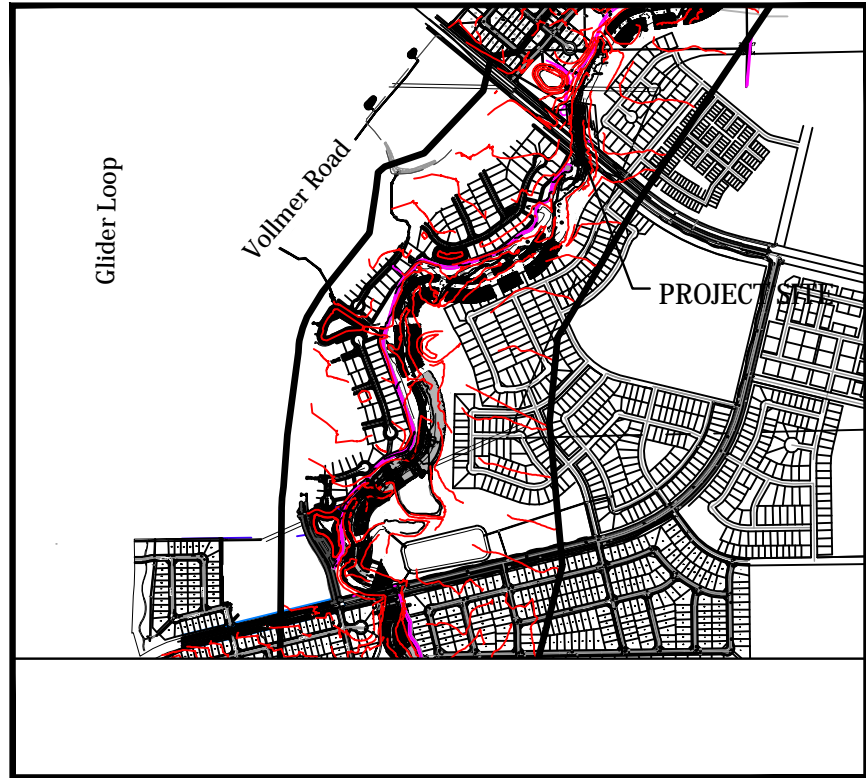


STERLING RANCH DEVELOPMENT
BRIARGATE BOULEVARD BRIDGE DESIGN PLANS
EL PASO COUNTY, COLORADO

Kiowa Project No. 19032
7/29/2021



VICINITY MAP
SCALE: N.T.S.

GENERAL NOTES

- Profile design lines are based on centerline, as shown, unless otherwise noted.
- All new construction to conform to the specifications of El Paso County Department of Public Works. Any asphalt removed is to be replaced to meet the specifications of the El Paso County Public Works Department.
- For pavement design, curb and gutter, and sidewalks see individual plan and profile sheets. Pavement design to be based on Resistance Value 'R' derived from Hveem tests and are to be approved by the Engineering Division of the El Paso County Planning and Community Development prior to work above subgrade.
- At intersections, all curb returns will have 20-foot radius unless otherwise noted.
- All existing utilities have been shown according to the best available information. The contractor is responsible for field location and verification prior to beginning work. If it appears that there could be a conflict with any utilities, whether indicated on the plans or not, the contractor is to notify the engineer and owner immediately. The contractor is responsible for the protection and repair (if necessary) of all utilities.
- A Pre-Construction meeting shall be held with the El Paso County Planning and Community Development prior to any construction.
- Approved plans, Engineering Criteria Manual, etc. is required to be on-site at all times during construction.
- All necessary permits, such as SWMP, ESQCP, Fugitive Dust, Access, C.O.E. 404, etc. shall be obtained prior to construction.
- All handicap ramps to be per El Paso County Standard SD 2-40.
- The contractor shall coordinate locations and layout with the El Paso County Planning and Community Development on the placement of any pedestrian ramps prior to construction of the curb.
- Where appropriate, neatly saw cut all existing concrete and asphalt. Repair/replace all disturbed existing items with like materials and thicknesses.
- All disturbed areas shall be revegetated with native grasses within 21 days of excavation per Erosion Control Plan.
- The prepared Erosion/Sediment Control Plan is to be considered a part of these plans and its requirements adhered to during the construction of this project.
- All storm and sanitary sewer pipe lengths and slopes are figured from center of manhole or bend. Pipe lengths are given as a horizontal length.
- All storm sewer bedding to be per CDOT Standards.
- All storm sewer pipe shall be Class III B Wall unless otherwise shown on the storm sewer plan and profile sheets.
- All wyves and bends used in construction of storm sewer facilities shall be factory fabricated, unless approved by the El Paso County Planning and Community Development.
- Construction and materials used in all storm and sanitary sewer manholes shall be per specifications. Storm sewer radial deflections to be grouted or installed per manufacturer's recommendations.
- Storm sewer manholes sizes as follows unless otherwise shown:
18" thru 36" use 48" I.D. manhole
42" thru 48" use 60" I.D. manhole
54" thru 60" use 72" I.D. manhole
NOTE: Manhole sizes tabulated here shall be increased, if necessary, to accommodate incoming laterals.
- All horizontal stationing is based on the 'Face of Curb', unless otherwise shown.
- All vertical design and top of curb are based on the design point shown in the typical cross section.
- The curb line design point is located at the intersection of the face and top of curb for the Type III Standard 6-inch vertical curb. See typical street section for design point locations.
- Vertical curb to be used between curb returns (CR) and at curb inlets. Transitions from ramp to vertical curb shall be 10-feet unless otherwise approved by the El Paso County Public Services Department. All other curb & gutter to be ramp curb & gutter.
- Cross pans to be per El Paso County Standard Detail SD 2-26.
- Curb returns shall be straight graded from CR to CR unless otherwise noted.
- Inlets are Type 'R' inlets (CDOT STD M-604-12) unless otherwise noted.

BENCHMARK:
THE TOP OF AN ALUMINUM SURVEYORS CAP, STAMPED "8953"
NORTHING = 411416.273
EASTING = 235167.071
ELEVATION = 7023.42

THE TOP OF RED PLASTIC SURVEYORS CAP, ILLEGIBLE
NORTHING = 410095.404
EASTING = 235052.131
ELEVATION = 7000.40

THE TOP OF RED PLASTIC SURVEYORS CAP, STAMPED "38141"
NORTHING = 411399.962
EASTING = 233849.817
ELEVATION = 7030.82

BASIS OF BEARING
THE SOUTH LINE OF THE SOUTHWEST QUARTER (SW $\frac{1}{4}$) OF SECTION 34, TOWNSHIP 12 SOUTH, RANGE 65 WEST OF THE 6TH P.M. AS MONUMENTED AT THE SOUTHWEST CORNER OF SAID SOUTHWEST QUARTER (SW $\frac{1}{4}$) BY A 2-1/2" ALUMINUM CAP STAMPED "LS 11624" AND AT THE SOUTHEAST CORNER OF SAID SOUTHWEST QUARTER (SW $\frac{1}{4}$) BY A 2-1/2" ALUMINUM CAP STAMPED "LS11624", SAID LINE BEARS N 89°14'14" E, A DISTANCE OF 2,722.56 FEET.



Know what's below.
Call before you dig.

EL PASO COUNTY STANDARD NOTES

- All drainage and roadway construction shall meet the standards and specifications of the City of Colorado Springs/El Paso County Drainage Criteria Manual, Volumes 1 and 2, and the El Paso County Engineering Criteria Manual.
- Contractor shall be responsible for the notification and field notification of all existing utilities, whether shown on the plans or not, before beginning construction. Location of existing utilities shall be verified by the contractor prior to construction. Call 811 to contact the Utility Notification Center of Colorado (UNCC).
- Contractor shall keep a copy of these approved plans, the Grading and Erosion Control Plan, the Stormwater Management Plan (SWMP), the soils and geotechnical report, and the appropriate design and construction standards and specifications at the job site at all times, including the following:
 - El Paso County Engineering Criteria Manual (ECM)
 - City of Colorado Springs/El Paso County Drainage Criteria Manual, Volumes 1 and 2
 - Colorado Department of Transportation (CDOT) Standard Specifications for Road and Bridge Construction
 - CDOT M & S Standards
- Notwithstanding anything depicted in these plans in words or graphic representation, all design and construction related to roads, storm drainage and erosion control shall conform to the standards and requirements of the most recent version of the relevant adopted El Paso County standards, including the Land Development Code, the Engineering Criteria Manual, the Drainage Criteria Manual, and the Drainage Criteria Manual Volume 2. Any deviations from regulations and standards must be requested, and approved, in writing. Any modifications necessary to meet criteria after-the-fact will be entirely the developer's responsibility to rectify.
- It is the design engineer's responsibility to accurately show existing conditions, both onsite and offsite, on the construction plans. Any modifications necessary due to conflicts, omissions, or changed conditions will be entirely the developer's responsibility to rectify.
- Contractor shall schedule a pre-construction meeting with El Paso County Planning and Community Development (PCD) - Inspections, prior to starting construction.
- It is the contractor's responsibility to understand the requirements of all jurisdictional agencies and to obtain all required permits, including but not limited to El Paso County Erosion and Stormwater Quality Control Permit (ESQCP), Regional Building Floodplain Development Permit, U.S. Army Corps of Engineers-issued 401 and/or 404 permits, and county and state fugitive dust permits.
- Contractor shall not deviate from the plans without first obtaining written approval from the design engineer and PCD. Contractor shall notify the design engineer immediately upon discovery of any errors or inconsistencies.
- All storm drain pipe shall be Class III RCP unless otherwise noted and approved by PCD.
- Contractor shall coordinate geotechnical testing per ECM standards. Pavement design shall be approved by El Paso County PCD prior to placement of curb and gutter and pavement.
- All construction traffic must enter/exit the site at approved construction access points.
- Sight visibility triangles as identified in the plans shall be provided at all intersections. Obstructions greater than 18 inches above flowline are not allowed within sight triangles.
- Signing and striping shall comply with El Paso County Department of Public Works and MUTCD criteria. [If applicable, additional signing and striping notes will be provided.]
- Contractor shall obtain any permits required by El Paso County Department of Public Works, including Work Within the Right-of-Way and Special Transport permits.
- The limits of construction shall remain within the property line unless otherwise noted. The owner/developer shall obtain written permission and easements, where required, from adjoining property owner(s) prior to any off-site disturbance, grading, or construction.

INDEX OF SHEETS

GEC0	GRADING & EROSION CONTROL COVER SHEET
GEC1	GRADING & EROSION CONTROL PLANS
GEC2	GEC NOTES AND SPECIFICATIONS
GEC3	GEC NOTES AND SPECIFICATIONS
GEC4	GEC NOTES AND SPECIFICATIONS

ABBREVIATIONS

ASSY = ASSEMBLY	MIN. = MINIMUM
BDY = BOUNDARY	NTS = NOT TO SCALE
BOP = BOTTOM OF PIPE	OD = OUTSIDE DIAMETER
CL = CENTERLINE	PC = POINT OF HORIZONTAL CURVATURE
CRA = CONCRETE REVERSE ANCHOR	PP = PROPOSED
CTRB = CONCRETE THRUST BLOCK	PT = POINT OF HORIZONTAL TANGENCY
CR = POINT OF CURB RETURN	PVC = POLY VINYL CHLORIDE PIPE
DIP = DUCTILE IRON PIPE	PVC = POINT OF VERTICAL CURVATURE
EL = ELEVATION	PVI = POINT OF VERTICAL INTERSECTION
ESMT = EASEMENT	PVT = POINT OF VERTICAL TANGENCY
EX. = EXISTING	RCB = REINFORCED CONCRETE BOX
FC = FACE OF CURB	RCP = REINFORCED CONCRETE PIPE
FES = FLARED END SECTION	ROW = RIGHT OF WAY
FLG = FLANGE	RT = RIGHT
FL = FLOWLINE	SHT = SHEET
GB = GRADE BREAK	SS = SANITARY SEWER
HP = HIGH POINT	STA = STATION
HORIZ = HORIZONTAL	STD = STANDARD
HYD = HYDRANT	TA = TOP OF ASPHALT
I.D. = INSIDE DIAMETER	TC = TOP OF CURB
LT = LEFT	TOP = TOP OF PIPE
LF = LINEAR FEET	TOR = TOP OF ROCK
LP = LOW POINT	TYP = TYPICAL
MAX = MAXIMUM	VC = VERTICAL CURVE
MH = MANHOLE	VERT = VERTICAL

STATEMENTS

Design Engineer's Statement:

These detailed plans and specifications were prepared under my direction and supervision. Said plans and specifications have been prepared according to the criteria established by the County for detailed roadway, drainage, grading and erosion control plans and specifications, and said plans and specifications are in conformity with applicable master drainage plans and master transportation plans. Said plans and specifications meet the purposes for which the particular roadway and drainage facilities are designed and are correct to the best of my knowledge and belief. I accept responsibility for any liability caused by any negligent acts, errors or omissions on my part in preparation of these detailed plans and specifications.

Todd Cartwright, P.E. #33365 _____ Date
For and on behalf of Kiowa Engineering Corp.

Owner/Developer's Statement:

I, the owner/developer have read and will comply with of the requirements of the Grading and Erosion Control Plans and all of the requirements specified in these detailed plans and specifications.

James Morley _____ Date
Sterling Ranch Metropolitan District

El Paso County:

County plan review is provided only for general conformance with County Design Criteria. The County is not responsible for the accuracy and adequacy of the design, dimensions, and/or elevations which shall be confirmed at the job site. The County through the approval of this document assumes no responsibility for completeness and/or accuracy of this document.

Filed in accordance with the requirements of the El Paso County Land Development Code, Drainage Criteria Manual, and Engineering Criteria Manual as amended.

In accordance with ECM Section 1.12, these construction documents will be valid for construction for a period of 2 years from the date signed by the El Paso County Engineer. If construction has not started within those 2 years the plans will need to be resubmitted for approval, including payment of review fees at the Planning and Community Development Directors discretion.

Jennifer Irvine, P.E. _____ Date
County Engineer / ECM Administrator



STERLING RANCH DEVELOPMENT
BRIARGATE BOULEVARD BRIDGE DESIGN PLANS
GRADING AND EROSION CONTROL PLANS
EL PASO COUNTY, COLORADO

Project No.: 19032

Date: 7/29/2021

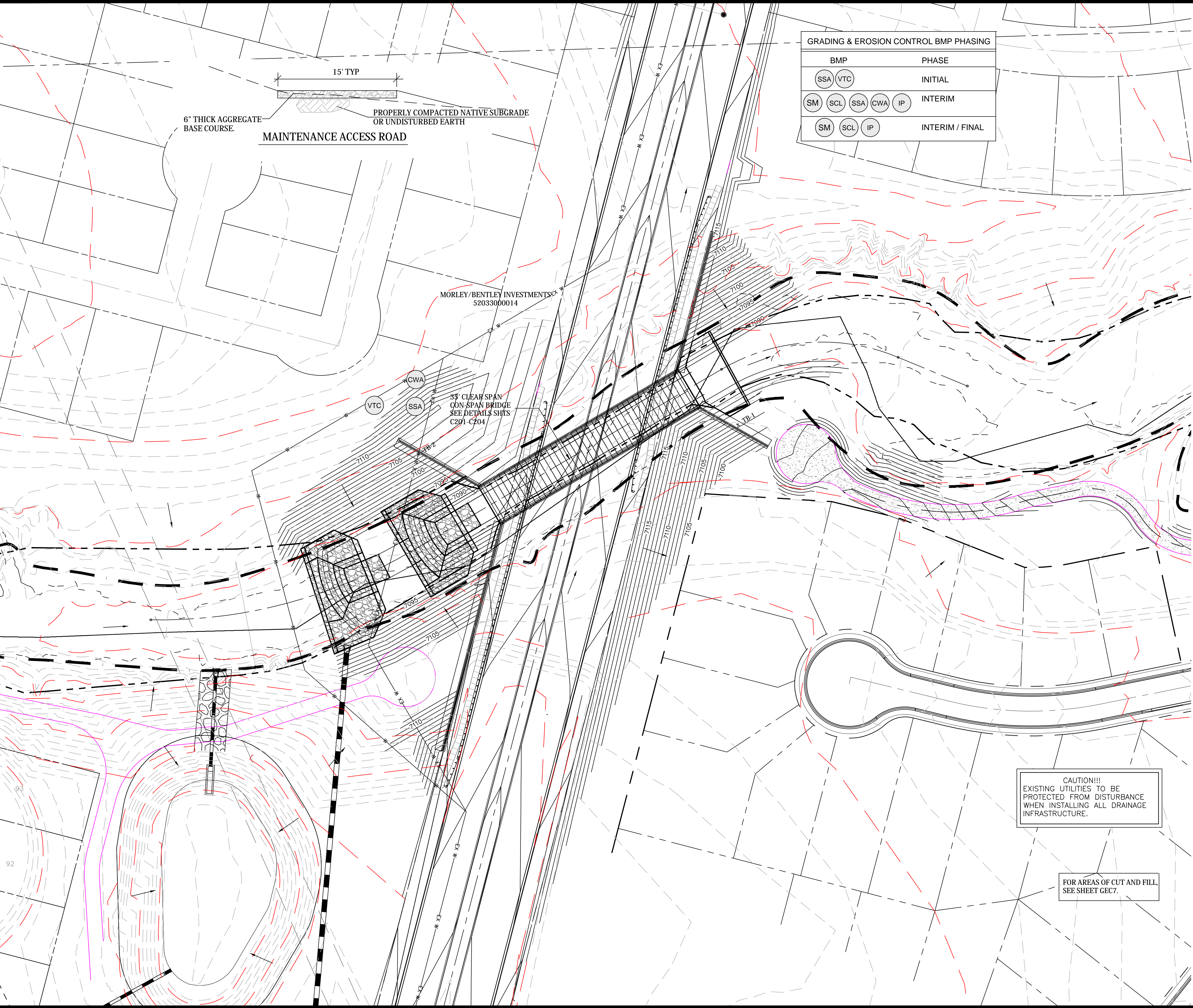
Design: TAC

Drawn: PAV

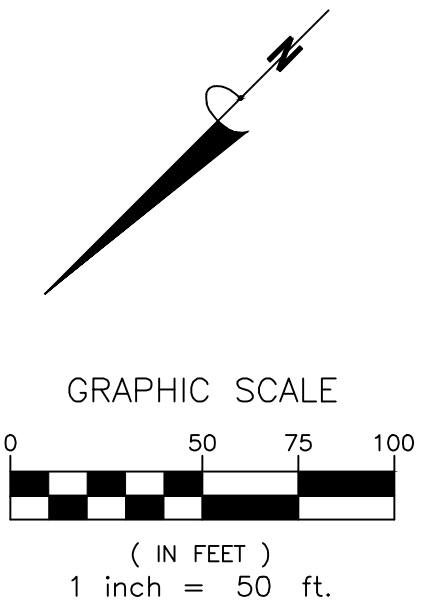
Check:

Revisions:

GECO



GRADING & EROSION CONTROL BMP PHASING	
BMP	PHASE
SSA VTC	INITIAL
SM SCL SSA CWA IP	INTERIM
SM SCL IP	INTERIM / FINAL



- LEGEND
- VTC VEHICLE TRACKING CONTROL
 - IP INLET PROTECTION
 - CWA CONCRETE WASHOUT AREA
 - SCL SEDIMENT CONTROL LOGS
 - SSA STABILIZED STAGING AREA
 - SM SEED AND MULCH
 - TRM TURF REINFORCEMENT MAT
 - ECB EROSION CONTROL BLANKET
 - TOR TOP OF SOIL/RIPRAP
 - LIMITS OF GRADING & CONSTRUCTION
 - 10+00 EXISTING FEMA 100 YEAR FLOODPLAIN
 - PROFILE CENTERLINE
 - PROPERTY LINE

- BANK LINING LEGEND
- ROUTED BOULDER 36"-48"
 - TYPE I SOIL RIPRAP D50-9"
 - TYPE M SOIL RIPRAP D50-12"
 - TRUF REINFORCED MAT
 - WETLAND MITIGATION VEGETATION

- NOTES:
- CONTRACTOR TO IDENTIFY MATERIAL AND SOIL STOCKPILES AREA ON THE SWMP PRIOR TO THE COMMENCEMENT OF MOBILIZATION AND PROVIDE PERIMETER CONTROL CONSTRUCTION FENCE. CONTRACTOR SHALL IDENTIFY STABILIZED STAGING AREA ON THE PLAN, THE LOCATION OF VEHICLE AND EQUIPMENT STORAGE AND MAINTENANCE, STORAGE AREAS FOR FERTILIZERS AND PESTICIDES, ON SITE WASTE MANAGEMENT MEASURES SUCH AS PORTOLETS, TRASH ROLL-OFF AND CONCRETE TRUCK AND EQUIPMENT WASHING AREA PRIOR TO THE COMMENCEMENT OF LAND DISTURBING ACTIVITIES.
 - CONTRACTOR TO IDENTIFY STABILIZED STAGING AREA PRIOR TO THE COMMENCEMENT OF MOBILIZATION.
 - CONSTRUCTION FENCING SHALL BE PROVIDED AT LIMITS OF GRADING/CONSTRUCTION AS PART OF THE INSTALLATION OF THE INITIAL BMPs.
 - CONTRACTOR SHALL PROVIDE CONSTRUCTION FENCING AROUND AREAS TO REMAIN UNDISTURBED BUT WITHIN LIMITS OF GRADING.
 - VEHICLE TRACKING BMPs FOR THIS PROJECT WILL BE LOCATED OFFSITE FROM THE WORK SHOWN ON THESE PLANS. VEHICLE TRACKING OFFSITE FROM THE PROJECT SHALL BE MAINTAINED CONTINUOUSLY THROUGHOUT THE PERIOD OF CONSTRUCTION.
 - THERE WILL BE NO DEDICATED ASPHALT OR CONCRETE BATCH PLANS REQUIRED FOR THIS PROJECT.
 - EXISTING VEGETATION IS MAINLY GRASSES AND HERBS WITH SMALLER AMOUNTS OF SHRUBS. EXISTING VEGETATION IS ESTIMATED AT 80%, BUT CONTRACTOR SHALL FIELD VERIFY PRIOR TO CONSTRUCTION.

CAUTION!!!
EXISTING UTILITIES TO BE
PROTECTED FROM DISTURBANCE
WHEN INSTALLING ALL DRAINAGE
INFRASTRUCTURE.

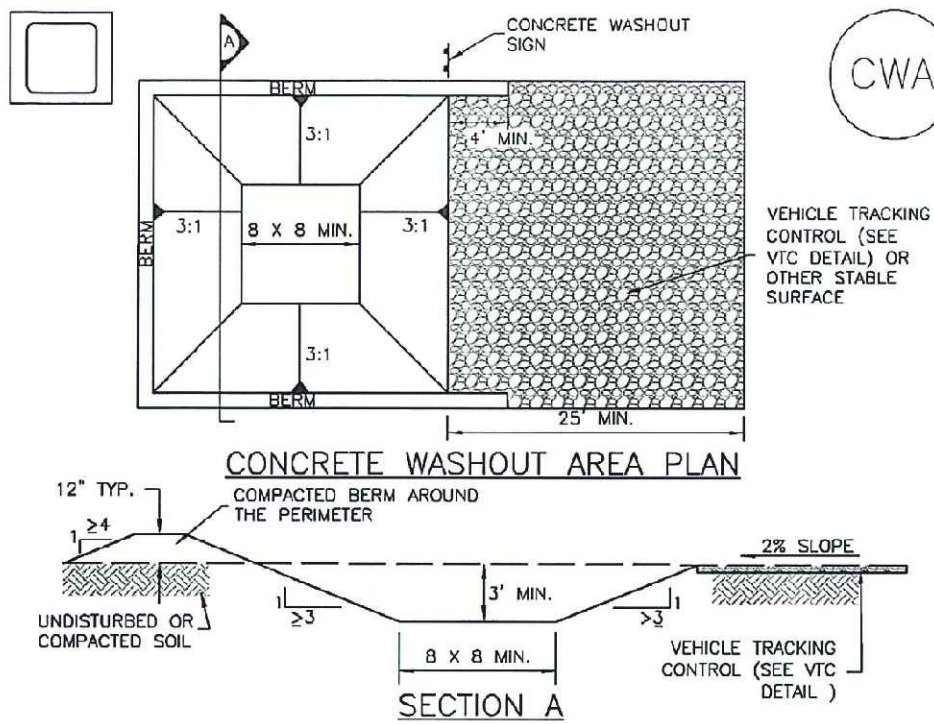
FOR AREAS OF CUT AND FILL,
SEE SHEET GEC7.

STERLING RANCH DEVELOPMENT
BRIARGATE BOULEVARD BRIDGE DESIGN PLANS
GRADING AND EROSION CONTROL PLANS
EL PASO COUNTY, COLORADO

Project No.:	19032
Date:	7/29/2021
Design:	TAC
Drawn:	PAV
Check:	
Revisions:	

GEC1

Concrete Washout Area (CWA)MM-1



- CWA-1. CONCRETE WASHOUT AREA**
- CWA INSTALLATION NOTES**
- SEE PLAN VIEW FOR:
CWA INSTALLATION LOCATION.
 - DO NOT LOCATE AN UNLINED CWA WITHIN 400' OF ANY NATURAL DRAINAGE PATHWAY OR WATERBODY. DO NOT LOCATE WITHIN 1,000' OF ANY WELLS OR DRINKING WATER SOURCES. IF SITE CONSTRAINTS MAKE THIS IMPOSSIBLE, OR IF HIGHLY PERMEABLE SOILS EXIST ON SITE, THE CWA MUST BE INSTALLED WITH AN IMPERMEABLE LINER (16 MIL MIN. THICKNESS) OR SURFACE STORAGE ALTERNATIVES USING PREFABRICATED CONCRETE WASHOUT DEVICES OR A LINED ABOVE GROUND STORAGE ARE SHOULD BE USED.
 - THE CWA SHALL BE INSTALLED PRIOR TO CONCRETE PLACEMENT ON SITE.
 - CWA SHALL INCLUDE A FLAT SUBSURFACE PIT THAT IS AT LEAST 8' BY 8' SLOPES LEADING OUT OF THE SUBSURFACE PIT SHALL BE 3:1 OR FLATTER THE PIT SHALL BE AT LEAST 3' DEEP.
 - BERM SURROUNDING SIDES AND BACK OF THE CWA SHALL HAVE MINIMUM HEIGHT OF 1'.
 - VEHICLE TRACKING PAD SHALL BE SLOPED 2% TOWARDS THE CWA.
 - SIGNS SHALL BE PLACED AT THE CONSTRUCTION ENTRANCE, AT THE CWA, AND ELSEWHERE AS NECESSARY TO CLEARLY INDICATE THE LOCATION OF THE CWA TO OPERATORS OF CONCRETE TRUCKS AND PUMP RIGS.
 - USE EXCAVATED MATERIAL FOR PERIMETER BERM CONSTRUCTION.

November 2010Urban Drainage and Flood Control DistrictCWA-3
Urban Storm Drainage Criteria Manual Volume 3

MM-1Concrete Washout Area (CWA)

- CWA MAINTENANCE NOTES**
- INSPECT BMPs EACH WORKDAY AND MAINTAIN THEM IN EFFECTIVE OPERATING CONDITION. MAINTENANCE OF BMPs SHOULD BE PROACTIVE, NOT REACTIVE. INSPECT BMPs AS SOON AS POSSIBLE (AND ALWAYS WITHIN 24 HOURS) FOLLOWING A STORM THAT CAUSES SURFACE EROSION, AND PERFORM NECESSARY MAINTENANCE.
 - FREQUENT OBSERVATIONS AND MAINTENANCE ARE NECESSARY TO MAINTAIN BMPs IN EFFECTIVE OPERATING CONDITION. INSPECTIONS AND CORRECTIVE MEASURES SHOULD BE DOCUMENTED THOROUGHLY.
 - WHERE BMPs HAVE FAILED, REPAIR OR REPLACEMENT SHOULD BE INITIATED UPON DISCOVERY OF THE FAILURE.
 - THE CWA SHALL BE REPAIRED, CLEANED, OR ENLARGED AS NECESSARY TO MAINTAIN CAPACITY FOR CONCRETE WASTE, CONCRETE MATERIALS, ACCUMULATED IN PIT, SHALL BE REMOVED ONCE THE MATERIALS HAVE REACHED A DEPTH OF 2'.
 - CONCRETE WASHOUT WATER, WASTED PIECES OF CONCRETE AND ALL OTHER DEBRIS IN THE SUBSURFACE PIT SHALL BE TRANSPORTED FROM THE JOB SITE IN A WATER-TIGHT CONTAINER AND DISPOSED OF PROPERLY.
 - THE CWA SHALL REMAIN IN PLACE UNTIL ALL CONCRETE FOR THE PROJECT IS PLACED.
 - WHEN THE CWA IS REMOVED, COVER THE DISTURBED AREA WITH TOP SOIL, SEED AND MULCH OR OTHERWISE STABILIZED IN A MANNER APPROVED BY THE LOCAL JURISDICTION.
- (DETAIL ADAPTED FROM DOUGLAS COUNTY, COLORADO AND THE CITY OF PARKER, COLORADO, NOT AVAILABLE IN AUTOCAD).
NOTE: MANY JURISDICTIONS HAVE BMP DETAILS THAT VARY FROM UDFCD STANDARD DETAILS. CONSULT WITH LOCAL JURISDICTIONS AS TO WHICH DETAIL SHOULD BE USED WHEN DIFFERENCES ARE NOTED.

CWA-4Urban Drainage and Flood Control DistrictNovember 2010
Urban Storm Drainage Criteria Manual Volume 3

PROJECT SPECIFIC GRADING AND EROSION CONTROL NOTES

- All earthwork required of this construction shall be completed in accordance with all applicable sections of the Project Specifications and Soil Investigation Report (Geotechnical Report).
- Rubbish including timber, concrete rubble, trees, brush, and asphalt shall not be backfilled adjacent to any of the structures or be in the placement of any unclassified fill. The Contractor shall be responsible for the removal and hauling of such materials to a suitable spoil area. Costs associated with the removal of such materials shall be paid for as documented in the Project Specifications.
- Excess excavation shall become the property of the Contractor and shall be disposed of at the Contractor's expense. The cost of haulage and spilling of excess excavated materials shall be paid for as documented in the Project Specifications.
- Water shall be used as a dust palliative as required and shall be included in the cost for earthwork item(s). No separate payment will be made for dust control associated with the site construction.
- The road grades shall be cleared of vegetation and the topsoil stockpiled for later use.
- All grading shall be in conformance with the Geotechnical Report for the area.
- Placement of fill for roadway embankments shall be completed in conformance with the Geotechnical Report.
- Grading contours shown on this plan are to final grade.
- Compaction under filled areas, including roadway and detention basin embankments, shall be 95 percent of the maximum Standard Proctor Density (ASTM D698) at two (2) percent of optimum moisture content.
- No rubble or debris shall be placed in the backfill under any of the proposed buildings, streets, curb & gutter, sidewalk and drainage structures or within five (5) feet of a building footprint. Properly graded rubble may be used in some locations as specified and verified by the Geotechnical Engineer.
- Contractor is responsible for reviewing the site prior to bidding to verify site conditions.
- Contractor is responsible for providing erosion control measures as approved by the El Paso County PCD Engineering Division and as may be required by the El Paso County Inspector.
- All slopes equal to or greater than 3:1 shall require anchored soil retention blanket (SRB), Geocir 700 or equal.
- The Developer is responsible for maintaining erosion control measures until a mature stage of vegetation is established.
- All soils used for fill must be approved by a representative of the Geotechnical Engineer.
- All natural ground to receive fill must be properly scarified, watered and compacted prior to placing fill.
- The Contractor is solely responsible for the design, maintenance and operation of any required dewatering system. The Contractor shall perform such independent investigation as he deems necessary to satisfy himself as to the subsurface groundwater conditions and unstable soil conditions to be encountered throughout the construction. Contractor shall coordinate the dewatering system with El Paso County when associated with public facilities.
- No fill shall be placed, spread or rolled while it is frozen, thawing or during unfavorable weather conditions. When the work is interrupted by heavy rain, fill operations shall not be resumed until a representative of the Geotechnical Engineer indicates that the moisture content and density of the previously placed fill are as specified. Fill surfaces may be scarified and recompactd after rainfall if necessary, to obtain proper moisture density relation.
- Additional erosion control structures and/or grading may be required at the time of construction.
- Sediment removal for erosion control facilities shall be performed continuously for proper function.
- Base mapping was provided by MS Civil Engineers The date of the last survey update was 2019.
- Proposed Construction Schedule:
Begin Construction: pending
End Construction: pending
Total Site Area = 60 Acres
- Area to be disturbed = 47.3 Acres (est.).
Existing 100-year runoff coefficient = 0.25
Proposed 100-year runoff coefficient = 0.25
Existing Hydrologic Soil Groups: HSG A & B
Site is currently undeveloped and covered with native grasses on mild to moderate to steep slopes (1%-4%).
- Site is located in the Sand Creek Drainage Basin.

STERLING RANCH DEVELOPMENT
BRIARGATE BOULEVARD BRIDGE DESIGN PLANS
GEC NOTES AND SPECIFICATIONS
EL PASO COUNTY, COLORADO

Project No.: 19032
Date: 7/29/2021
Design: TAC
Drawn: PAV
Check:
Revisions:

GEC2

Celebrating 30 years
Kiowa
Engineering Corporation
1604 South 21st Street
Colorado Springs, Colorado 80904
(719) 630-7342

