



Elite Properties of America, Inc.
20TRM-Timber Ridge Multi-Plate
Structure & Bank Stabilization
Transmittal of Contractor's
Submittal
(Attached to each Submittal)

Date: 12/01/2020

To: Bill Richie

From: Tezak Heavy Equipment Co., Inc.

Responsible Contact: Cory O'Canna

Submittal Description: Rebar Shop Drawings

Variation to Contract: N

Submittal Number: 002

New Submittal: Y

Re-Submittal: N

Revision Number: 0

Specification Section:
(Cover only one section with each transmittal)

Drawing Number:

Notes/Comments:

Please see attached Submittal 002 Rev 00 - Rebar Shop Drawings for your review and approval.

CONTRACTOR hereby certifies that CONTRACTOR has complied with the requirements of Contract Documents in preparation, review, and submission of designated Submittal, and the Submittal is complete and in accordance with Contract Documents and requirement of the laws and regulations and governing agencies.

From:

Date:

12/01/2020

Brandon Houser
Tezak Heavy Equipment Co., Inc.

SUBMITTAL REVIEW

☒ NO EXCEPTIONS TAKEN

☐ MAKE CORRECTIONS AS NOTED

☐ REVISE AND RESUBMIT

☐ NOT REVIEWED (Submittal does not pertain to civil prepared documents)

Classic Consulting Engineers & Surveyors, LLC has reviewed this Submittal only for the limited purpose of checking for general conformance with the survey and civil documents prepared for this project. This review does not warranty or guarantee installation will be in conformance with these documents, nor does it relieve the contractor from adhering to all required government specifications and regulations.

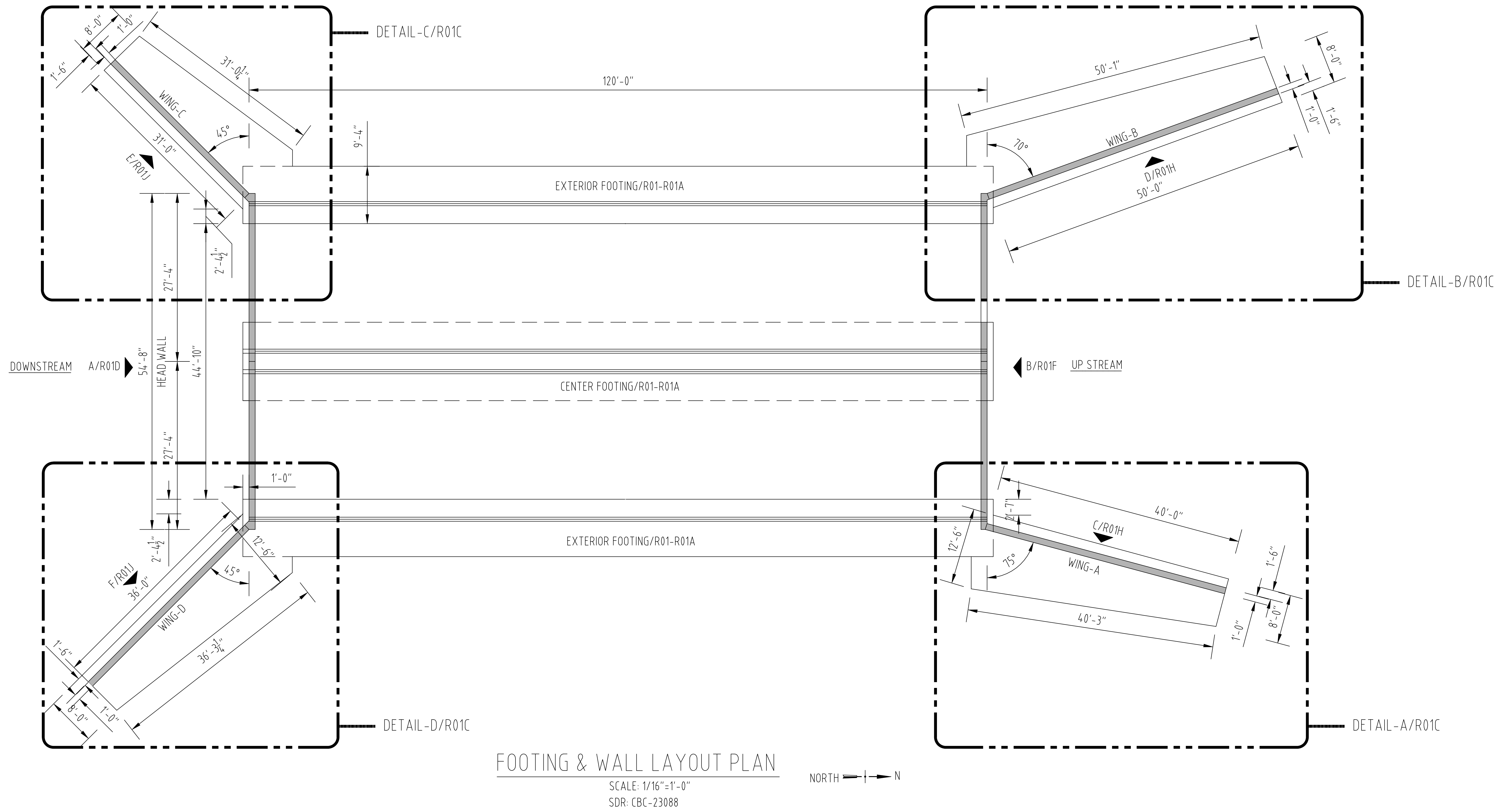
By:

Project No:

1145,00

Date:

12/10/2020



* USE IN CONJUNCTION WITH THE CONTRACT DRAWINGS *
- FOR SECTIONS SEE CONTRACT DRAWINGS -



THIS PLACING DRAWING WAS PREPARED FROM CONTRACT DOCUMENTS DATED: 03/20/20

Cust: PPC CONSTRUCTION, INC

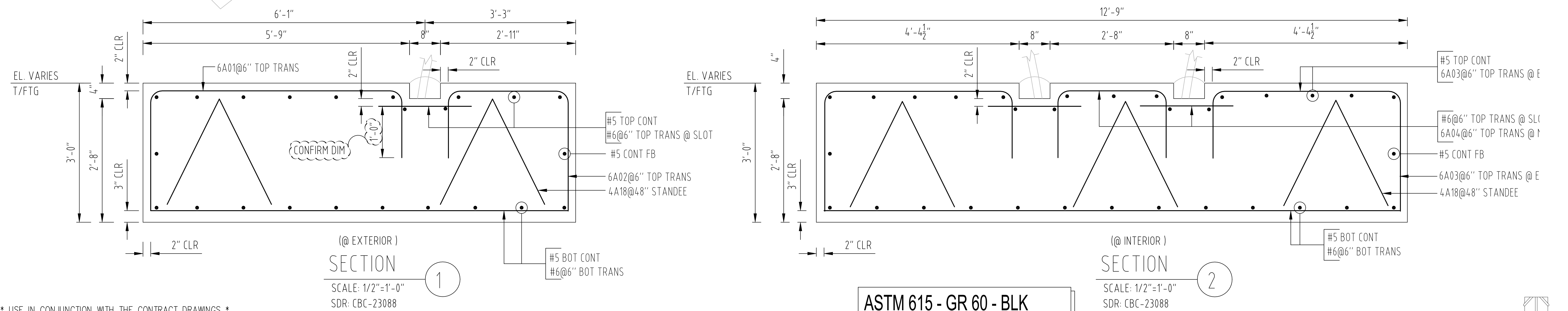
Project: TIMBER RIDGE MULTI-PLATE

For Approval 11/19/20
Issue Date

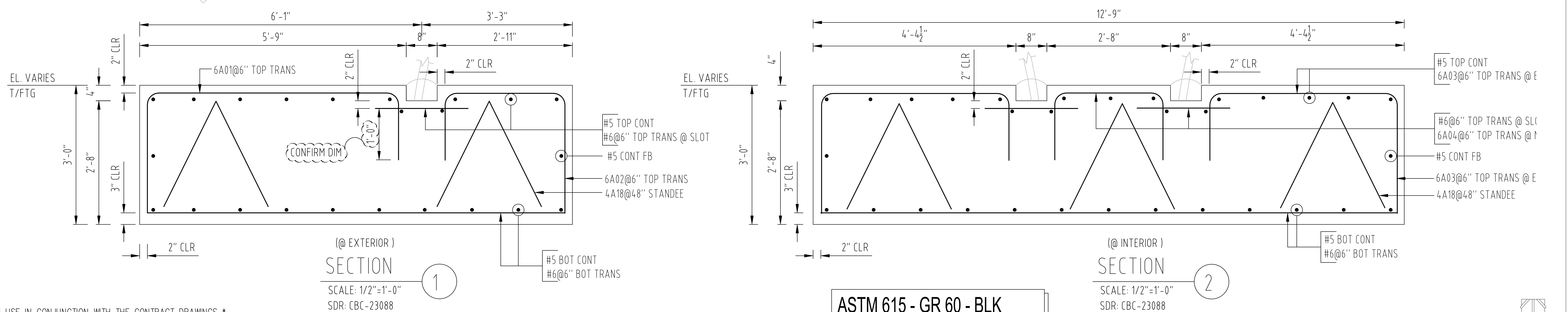
Drawing #: 045-20045257
(Structure) R01

0

MST



MST



Drawing #: R01B 0
(Structure)

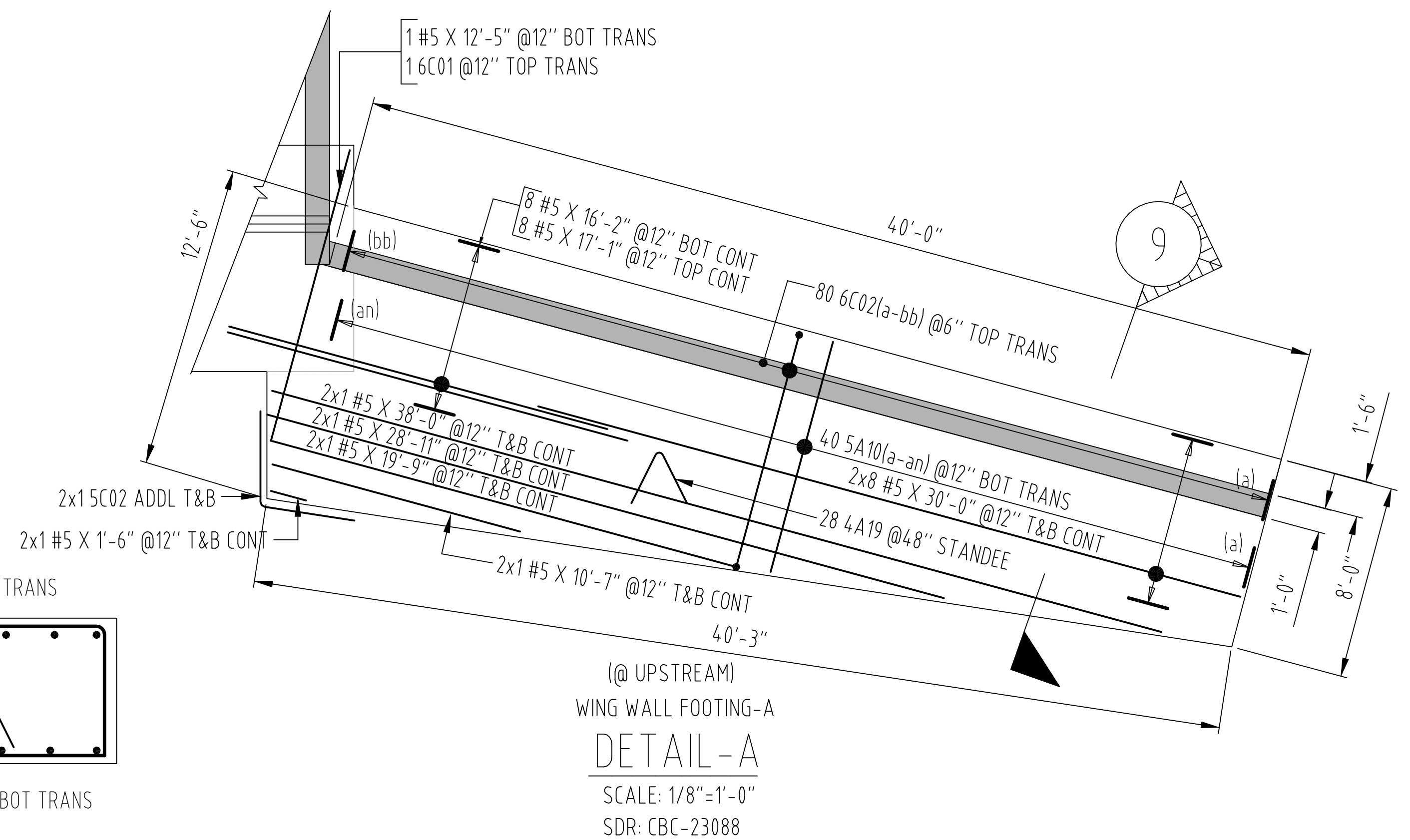
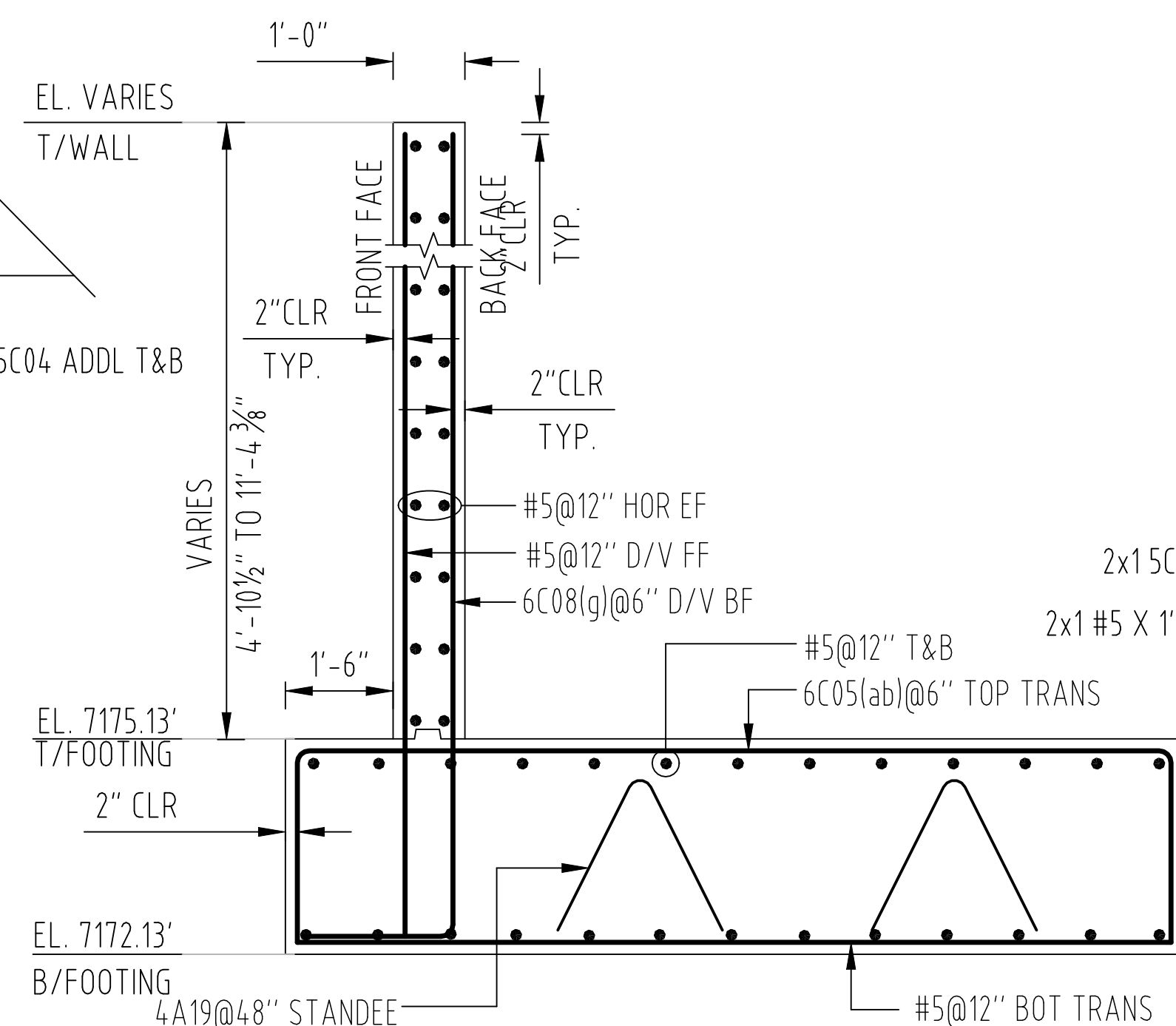
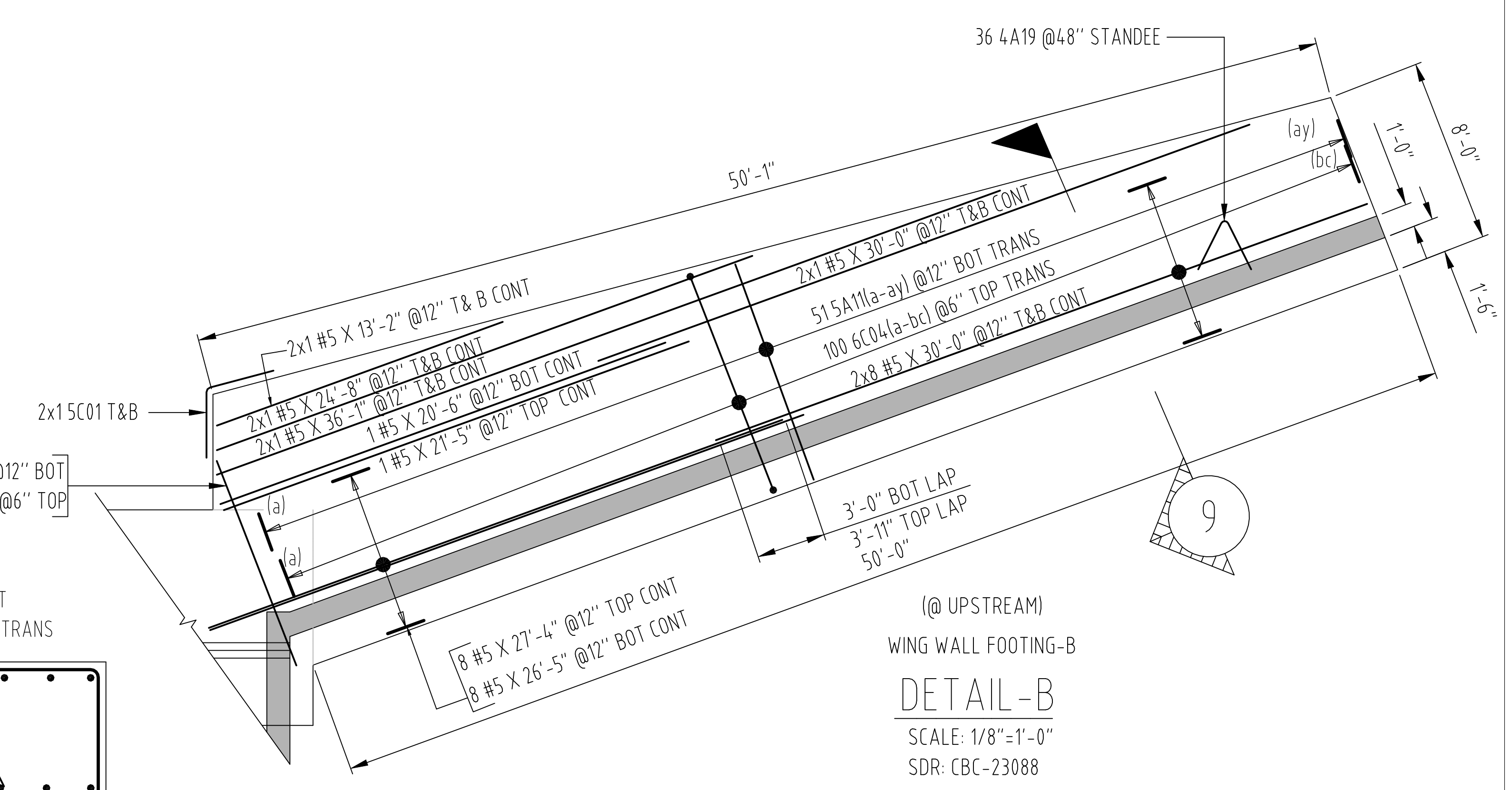
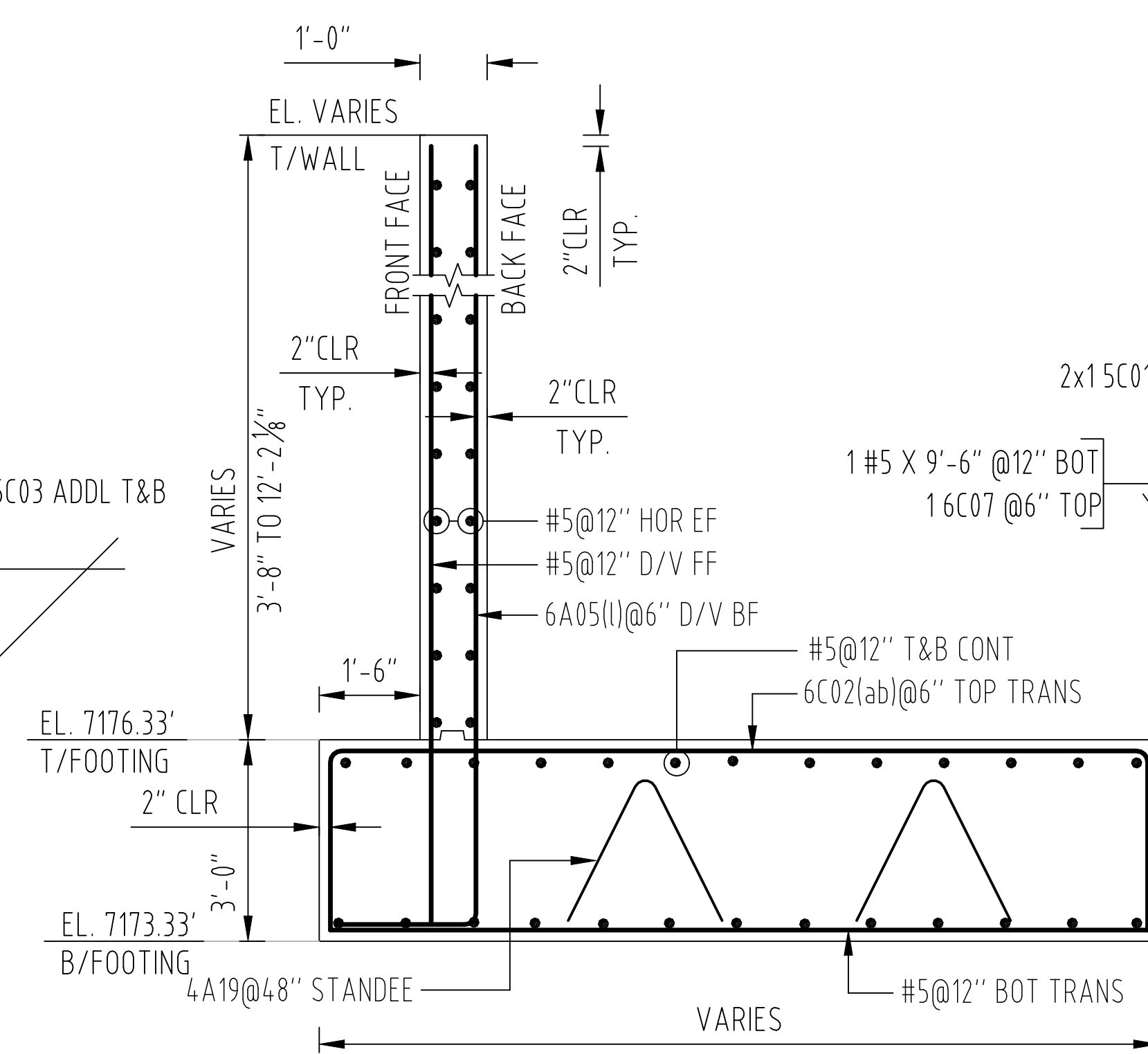
ASTM 615 - GR 60 - BLK

JOB # 045-20045257

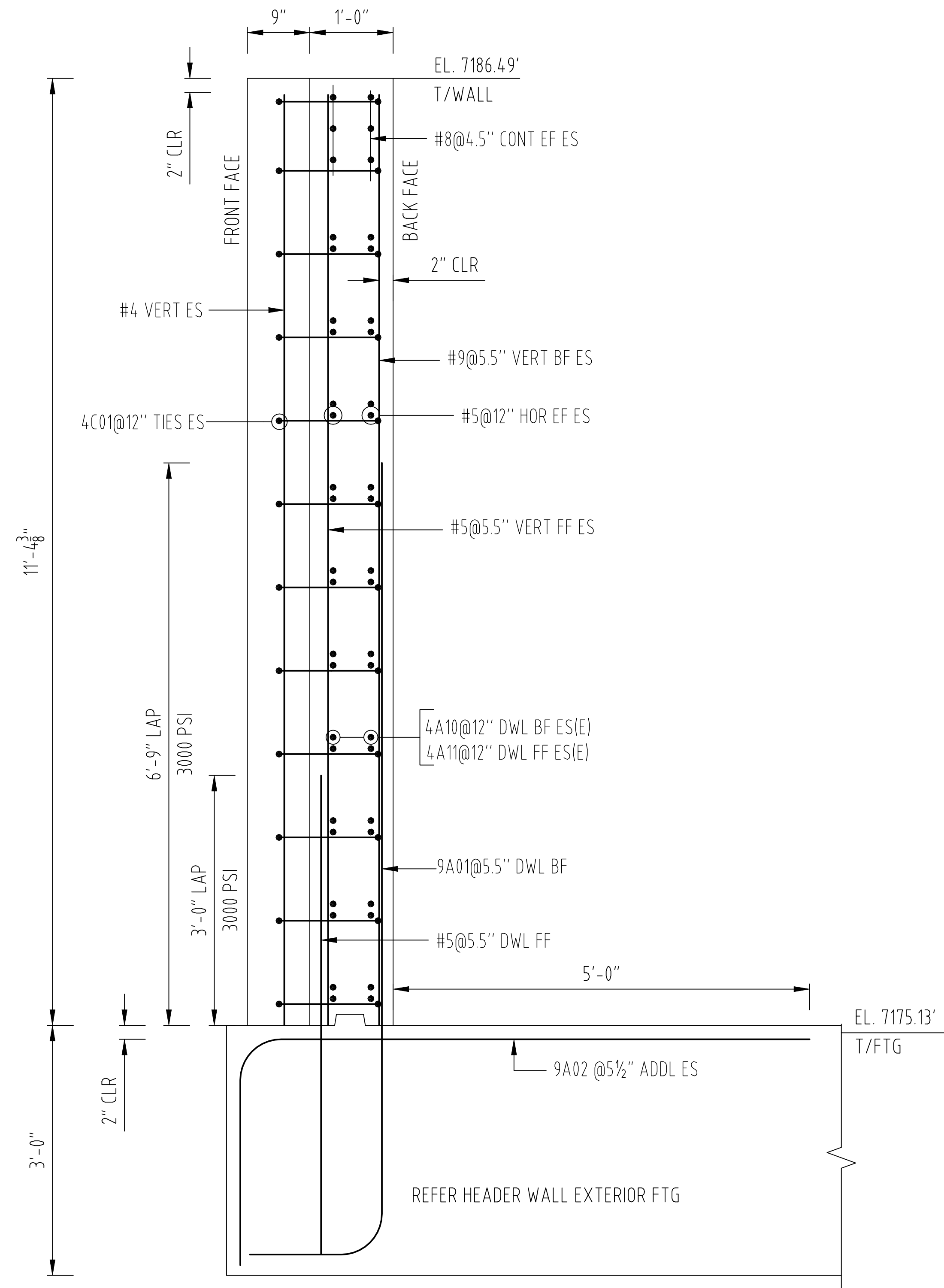
#: R01B

0

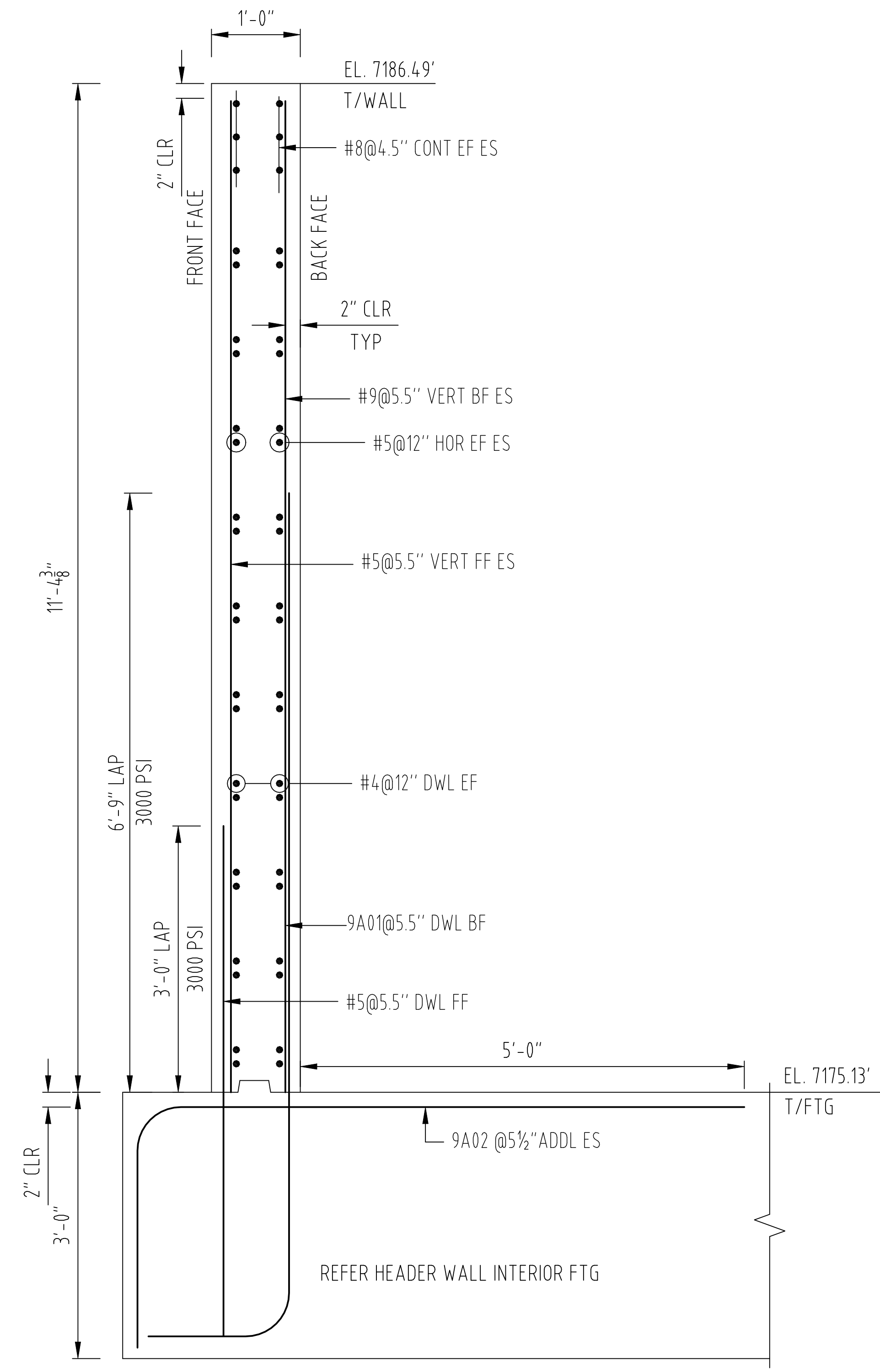
MST



MST



(@ EXTERIOR FTG)
SECTION 3
SCALE: 1/2"=1'-0"
SDR: AA/CBC-23088



(@ INTERIOR FTG)
SECTION 5
SCALE: 1/2"=1'-0"
SDR: CC/CBC-23088

* USE IN CONJUNCTION WITH THE CONTRACT DRAWINGS *
- FOR SECTIONS SEE CONTRACT DRAWINGS -



THIS PLACING DRAWING WAS PREPARED FROM CONTRACT DOCUMENTS DATED: 03/20/20

Cust: PPC CONSTRUCTION, INC

Project: TIMBER RIDGE MULTI-PLATE

For Approval 11/19/20
Issue Date

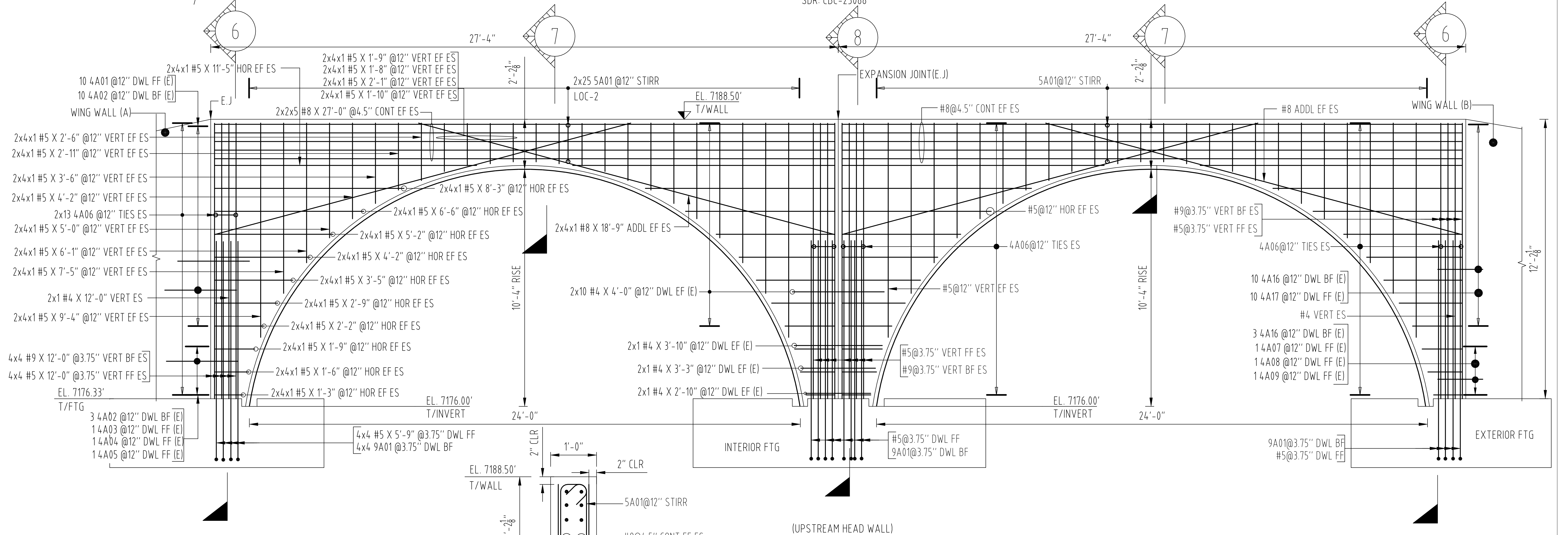
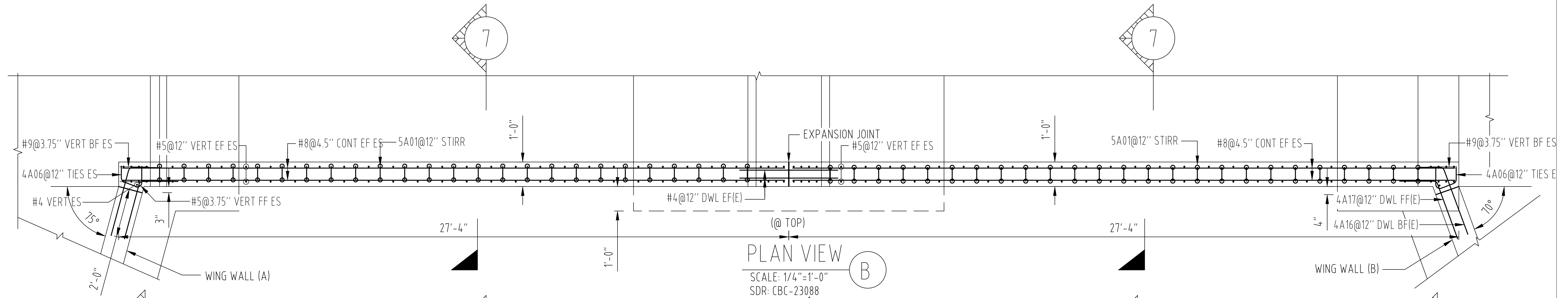
ASTM 615 - GR 60 - BLK

JOB # 045-20045257

Drawing #:
(Structure) R01E

0

MST



* USE IN CONJUNCTION WITH THE CONTRACT DRAWINGS *
- FOR SECTIONS SEE CONTRACT DRAWINGS -



THIS PLACING DRAWING WAS PREPARED FROM CONTRACT DOCUMENTS DATED: 03/20/20

Cust: PPC CONSTRUCTION, INC

Project: TIMBER RIDGE MULTI-PLATE

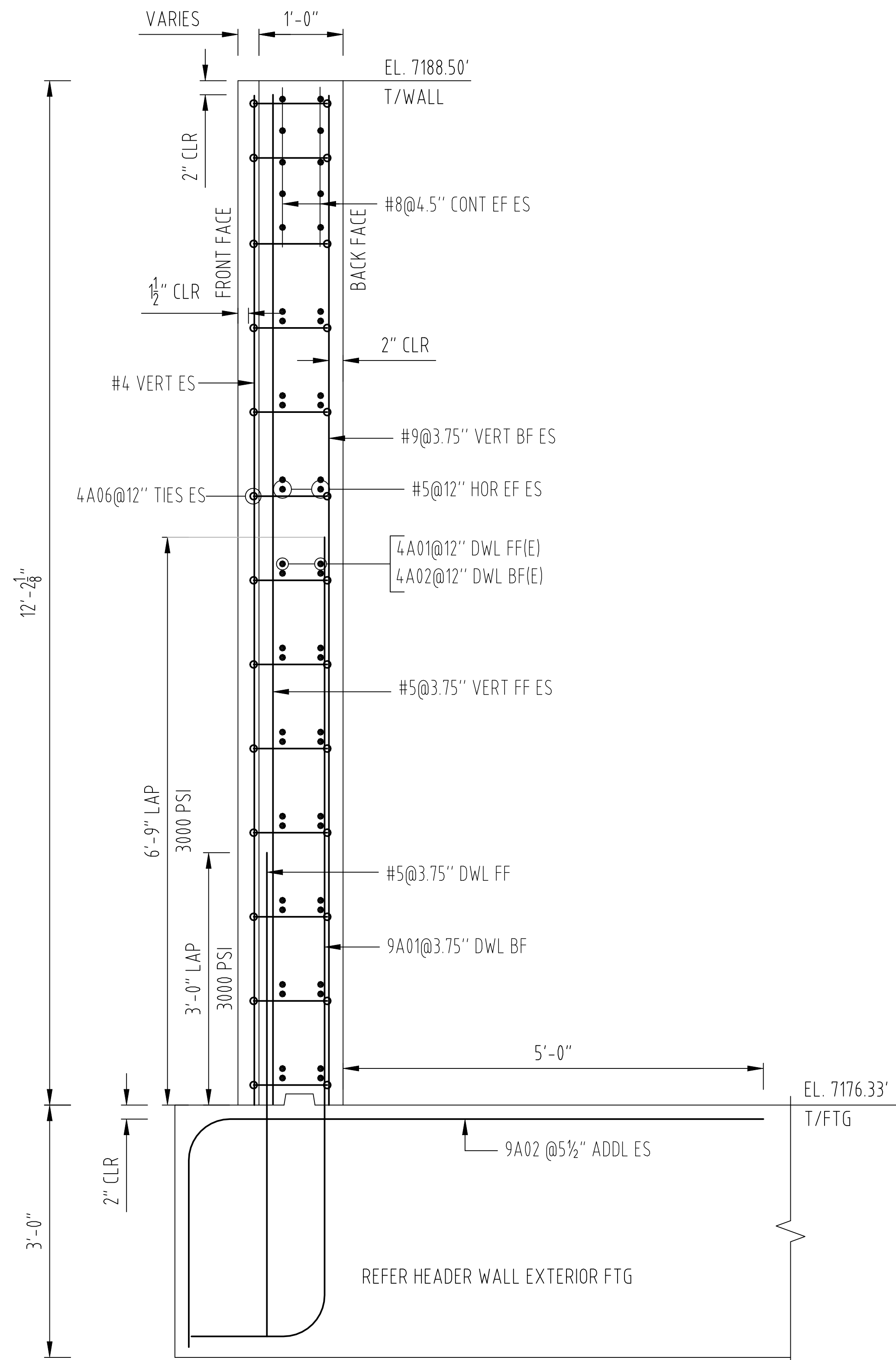
For Approval 11/19/20
Issue Date

JOB # 045-20045257

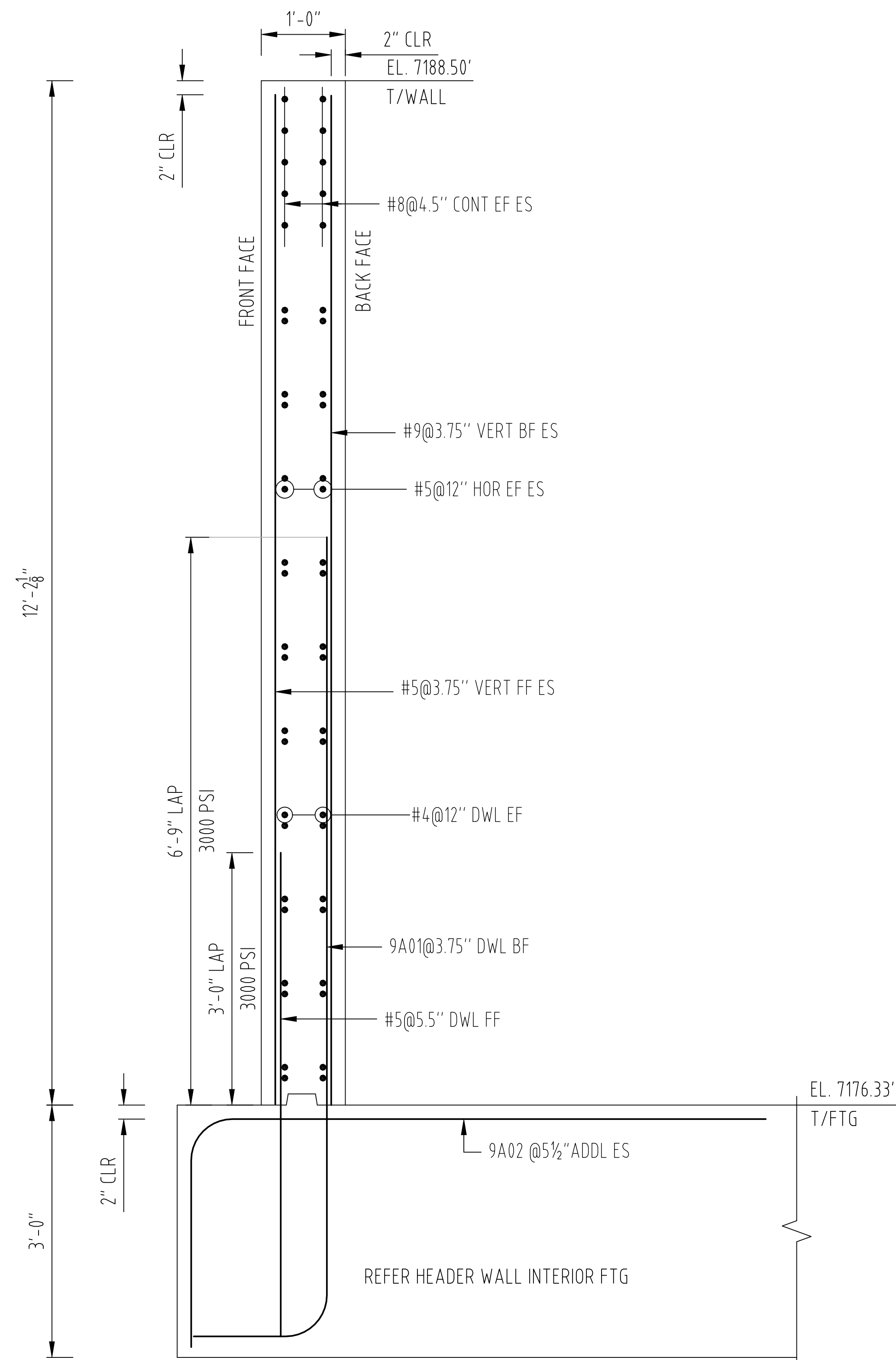
Drawing #:
(Structure) R01F

0

MST



(@ EXTERIOR FTG)
SECTION 6
SCALE: 1/2"=1'-0"
SDR: D/CBC-23088



(@ INTERIOR FTG)
SECTION 8
SCALE: 1/2"=1'-0"
SDR: F/CBC-23088

* USE IN CONJUNCTION WITH THE CONTRACT DRAWINGS *
- FOR SECTIONS SEE CONTRACT DRAWINGS -



THIS PLACING DRAWING WAS PREPARED FROM CONTRACT DOCUMENTS DATED: 03/20/20

Cust: PPC CONSTRUCTION, INC

Project: TIMBER RIDGE MULTI-PLATE

For Approval 11/19/20
Issue Date

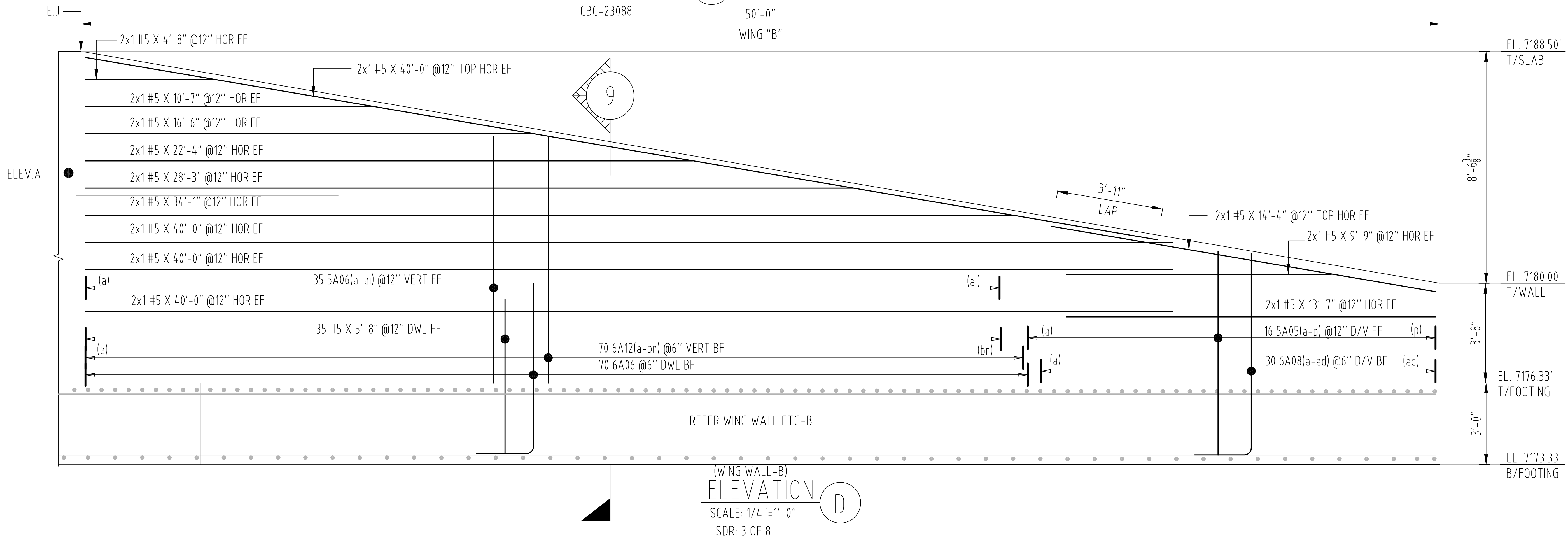
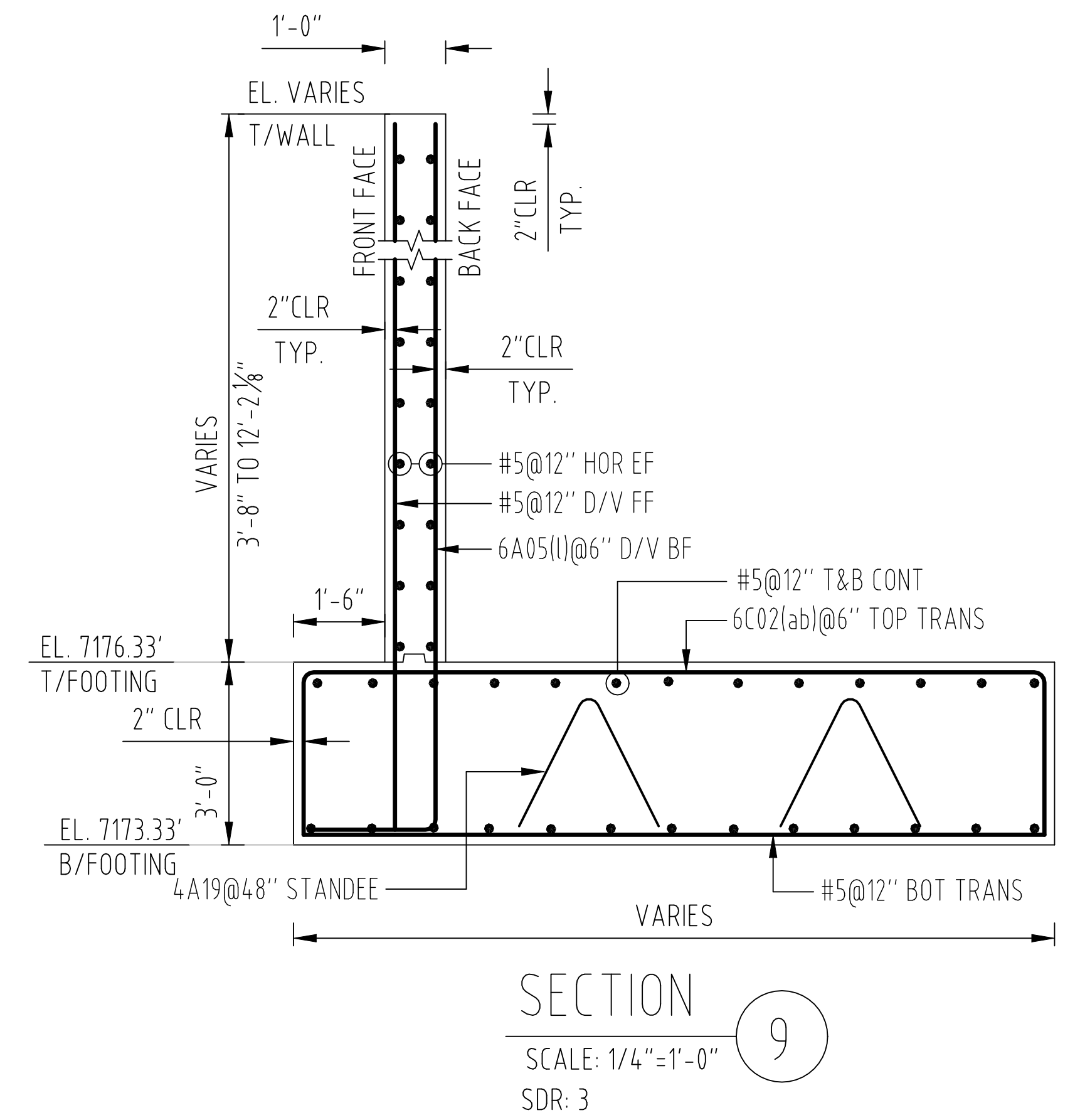
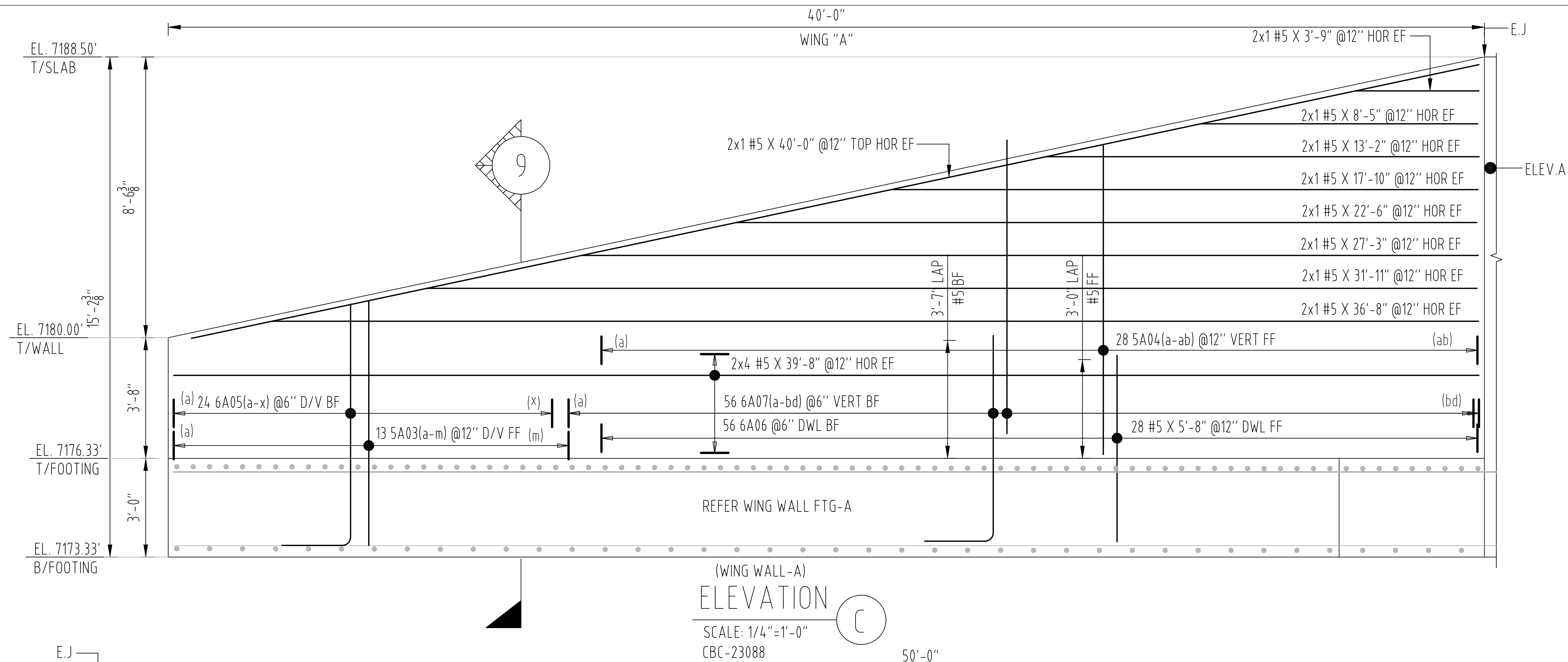
ASTM 615 - GR 60 - BLK

JOB # 045-20045257

Drawing #:
(Structure) R01G

0

MST



* USE IN CONJUNCTION WITH THE CONTRACT DRAWINGS *
- FOR SECTIONS SEE CONTRACT DRAWINGS -



THIS PLACING DRAWING WAS PREPARED FROM CONTRACT DOCUMENTS DATED: 03/20/20

Cust: PPC CONSTRUCTION, INC

Project: TIMBER RIDGE MULTI-PLATE

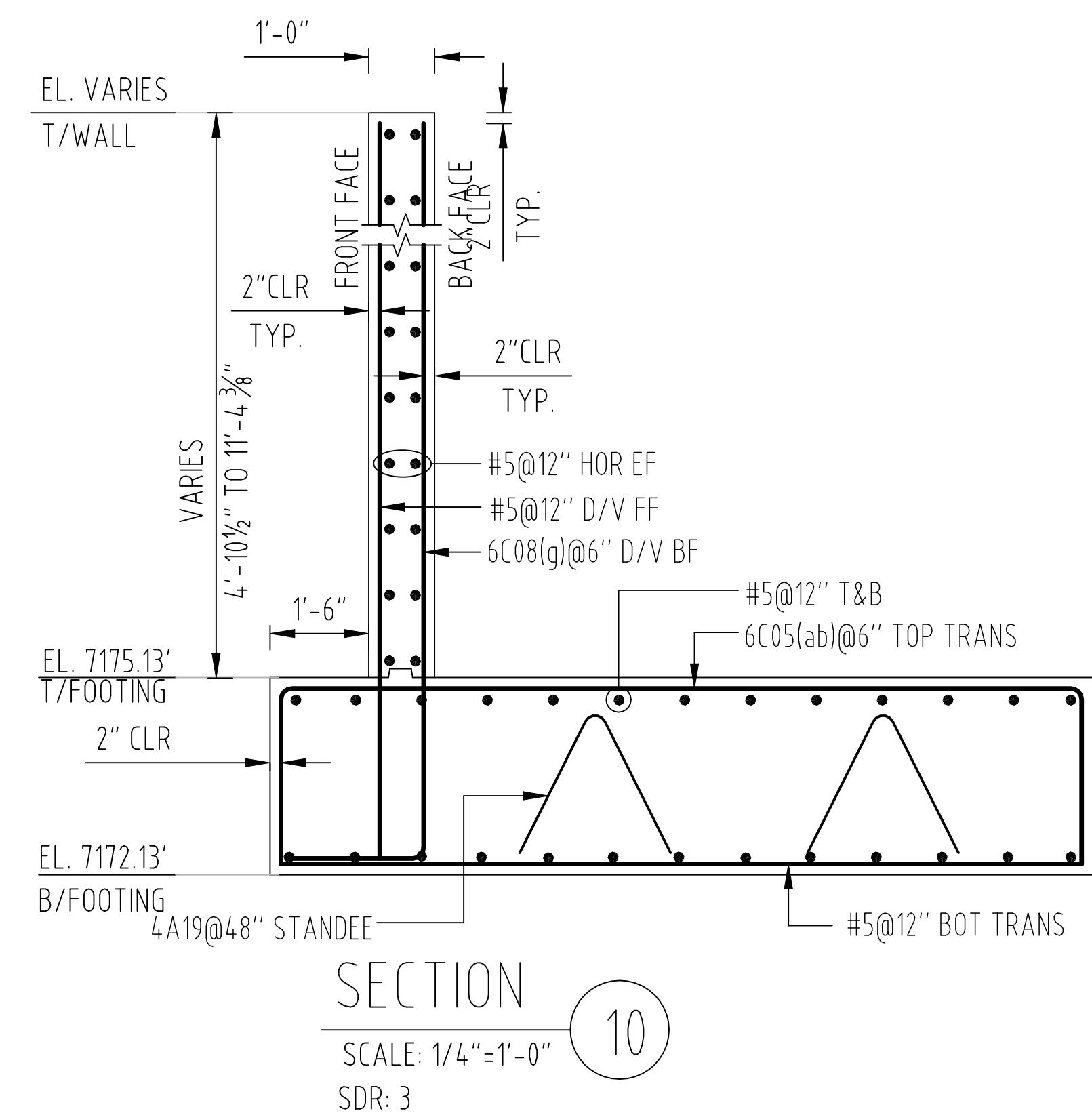
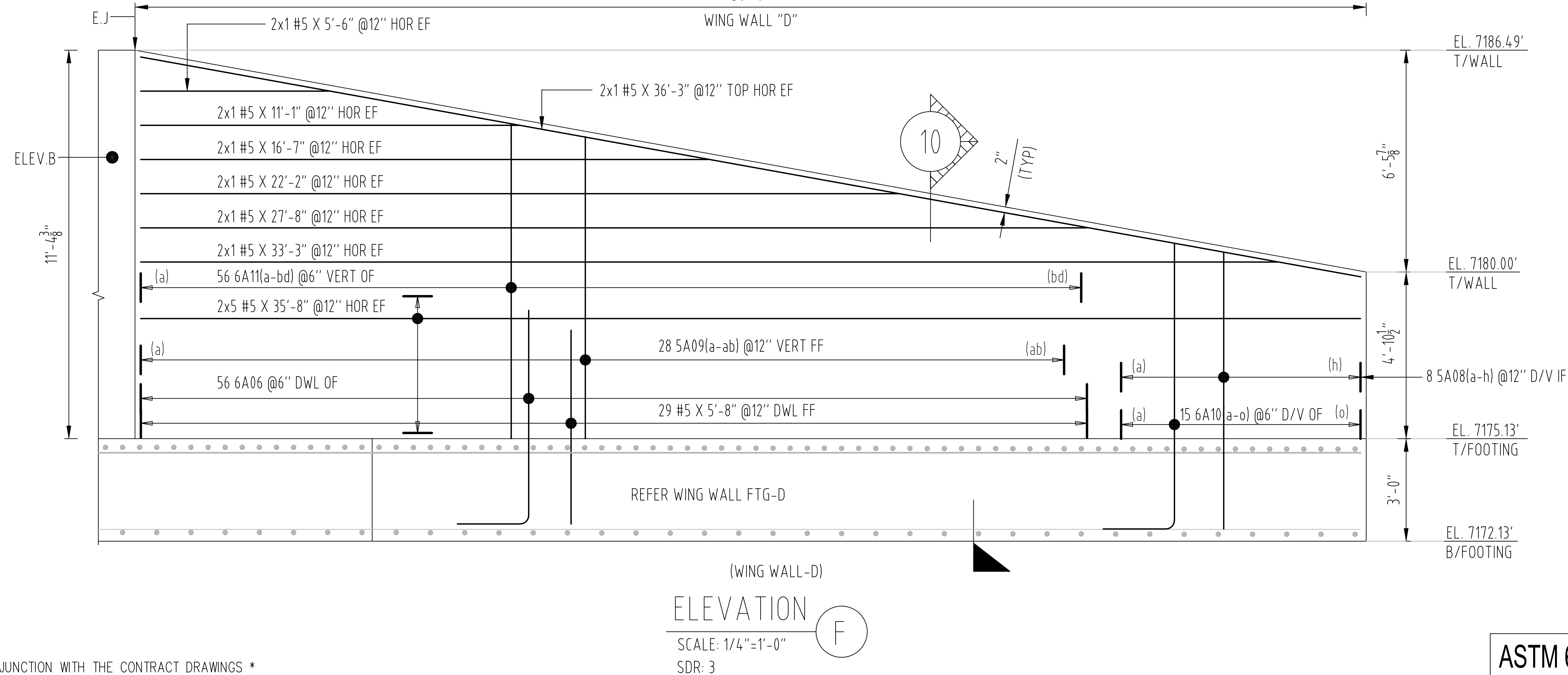
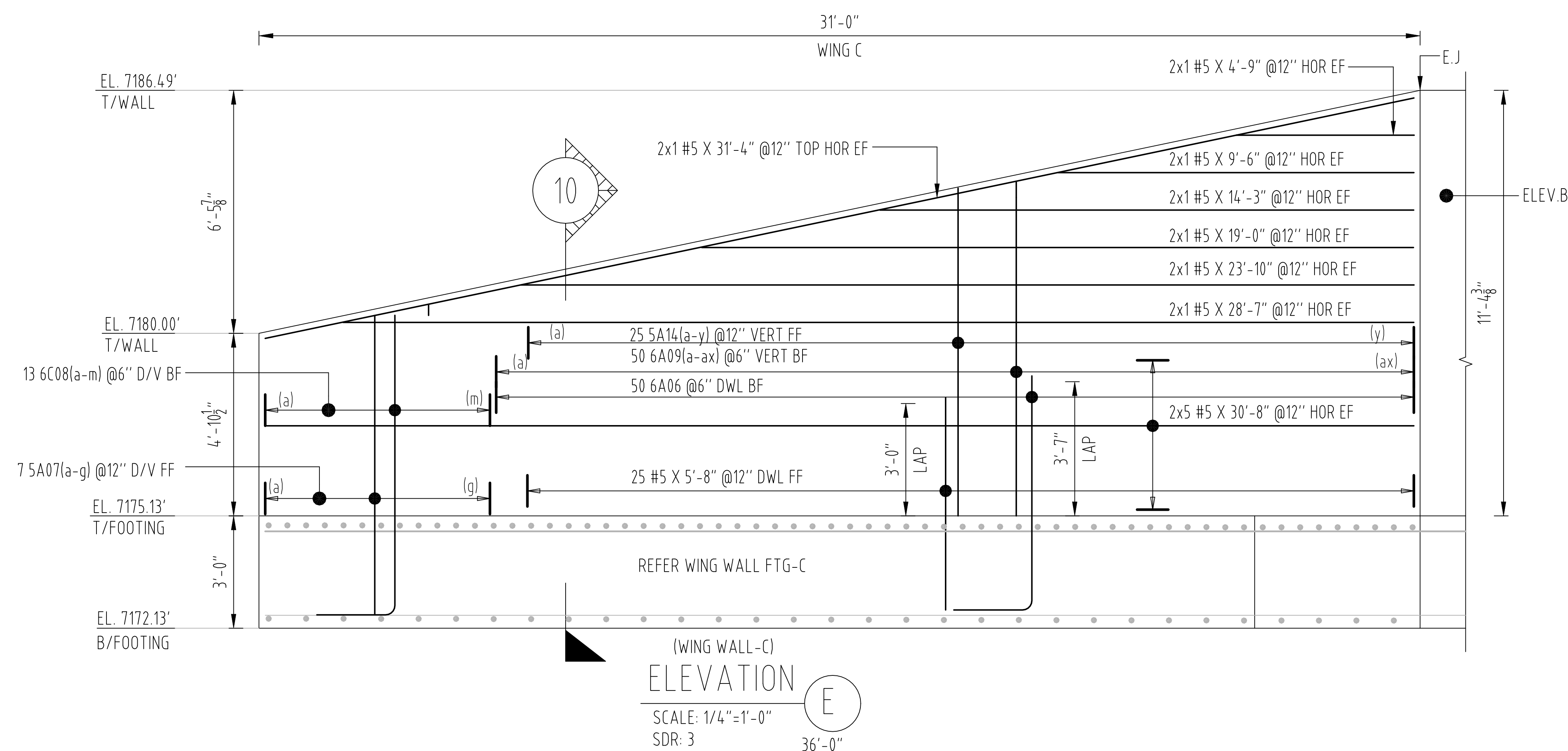
For Approval 11/19/20
Issue Date

Drawing #: 045-20045257
(Structure)

R01H
0

MST

ASTM 615 - GR 60 - BLK



* USE IN CONJUNCTION WITH THE CONTRACT DRAWINGS *
- FOR SECTIONS SEE CONTRACT DRAWINGS -



THIS PLACING DRAWING WAS PREPARED FROM CONTRACT DOCUMENTS DATED: 03/20/20

Cust: PPC CONSTRUCTION, INC

Project: TIMBER RIDGE MULTI-PLATE

For Approval 11/19/20
Issue Date

JOB # 045-20045257

Drawing #:
(Structure) R01J

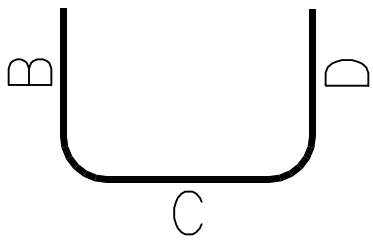
0

MST

FOR VARYING BARS

Total Qty	Bar Size	Total Length	Bar Mark	Bend type	BENDING DIMENSIONS										
					A	B	C	D	E	F/R	G	H	J	K	O
24	#6	8'-3" - 10'-8"	6A05(a - x)	17		2'-1"	6'-2" - 8'-7"								
56	#6	6'-1" - 11'-11"	6A07(a - bd)	0		6'-1" - 11'-11"									
30	#6	8'-3" - 10'-9"	6A08(a - ad)	17		2'-1"	6'-2" - 8'-8"								
50	#6	6'-0" - 11'-1"	6A09(a - ax)	0		6'-0" - 11'-1"									
15	#6	9'-6" - 10'-9"	6A10(a - o)	17		2'-1"	7'-5" - 8'-8"								
56	#6	6'-2" - 11'-2"	6A11(a - bd)	0		6'-2" - 11'-2"									
70	#6	6'-1" - 12'-0"	6A12(a - br)	0		6'-1" - 12'-0"									
80	#6	12'-10" - 17'-3"	6C02(a - bb)	17		2'-7"	7'-8" - 12'-1"	2'-7"							
62	#6	12'-10" - 17'-4"	6C03(a - bc)	17		2'-7"	7'-8" - 12'-2"	2'-7"							
100	#6	12'-10" - 17'-4"	6C04(a - bc)	17		2'-7"	7'-8" - 12'-2"	2'-7"							
73	#6	12'-10" - 17'-3"	6C05(a - bb)	17		2'-7"	7'-8" - 12'-1"	2'-7"							
13	#6	9'-6" - 10'-9"	6C08(a - m)	17		2'-1"	7'-5" - 8'-8"								
13	#5	6'-2" - 8'-9"	5A03(a - m)	0		6'-2" - 8'-9"									
28	#5	6'-4" - 12'-0"	5A04(a - ab)	0		6'-4" - 12'-0"									
16	#5	6'-2" - 8'-9"	5A05(a - p)	0		6'-2" - 8'-9"									
35	#5	6'-3" - 12'-0"	5A06(a - ail)	0		6'-3" - 12'-0"									
7	#5	7'-5" - 8'-8"	5A07(a - g)	0		7'-5" - 8'-8"									
8	#5	7'-5" - 8'-8"	5A08(a - h)	0		7'-5" - 8'-8"									
28	#5	6'-4" - 11'-2"	5A09(a - ab)	0		6'-4" - 11'-2"									
40	#5	7'-8" - 12'-1"	5A10(a - an)	0		7'-8" - 12'-1"									
51	#5	7'-8" - 12'-2"	5A11(a - ay)	0		7'-8" - 12'-2"									
37	#5	7'-8" - 12'-1"	5A12(a - ak)	0		7'-8" - 12'-1"									
32	#5	7'-8" - 12'-2"	5A13(a - af)	0		7'-8" - 12'-2"									
25	#5	6'-2" - 11'-2"	5A14(a - y)	0		6'-2" - 11'-2"									

17

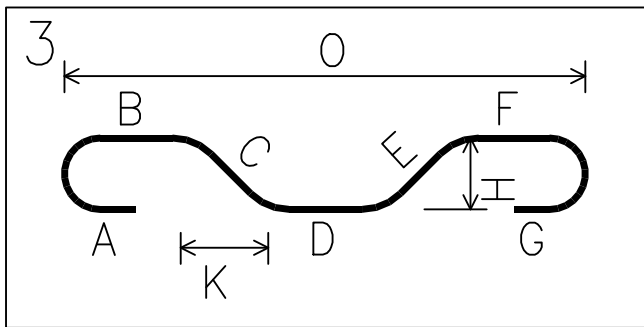


0



FOR EPOXY COATED BARS

Total Qty.	Bar Size	Total Length	Bend Mark	Bend type	BENDING DIMENSIONS										
					A	B	C	D	E	F/R	G	H	J	K	O
10	#4	4'-0¼"	4A01	3		2'-5¼"	1'-7"					1'-6½"		4¼"	2'-9½"
13	#4	4'-0¼"	4A02	3		2'-10½"	1'-1¾"					1'-1½"		3"	3'-1½"
1	#4	3'-7¾"	4A03	3		2'-5¼"	1'-2"					1'-1¾"		3"	2'-8¾"
1	#4	3'-3½"	4A04	3		2'-5¼"	10¼"					10"		2"	2'-7¼"
1	#4	3'-0¼"	4A05	3		2'-5¼"	7"					7"		1¼"	2'-6½"
1	#4	3'-7½"	4A07	3		2'-6"	1'-1½"					1'-0¾"		4¼"	2'-10¼"
1	#4	3'-3½"	4A08	3		2'-6"	9½"					9"		3"	2'-9"
1	#4	3'-1½"	4A09	3		2'-6"	7½"					7¼"		2"	2'-8"
20	#4	5'-8¼"	4A10	3		2'-4"	3'-4¼"					2'-4¾"		2'-4"	4'-8"
18	#4	4'-0¼"	4A11	3		3'-1¾"	10½"					7¾"		7"	3'-8¾"
2	#4	3'-10"	4A12	3		3'-1¾"	8¼"					6¼"		5½"	3'-7¼"
2	#4	3'-11¼"	4A13	3		7"	3'-4¼"					2'-4¾"		2'-4"	2'-11"
4	#4	3'-6¼"	4A14	3		3'-1¾"	4½"					3½"		2¾"	3'-4½"
2	#4	3'-9¾"	4A15	3		5"	3'-4¼"					2'-4¾"		2'-4"	2'-9"
13	#4	3'-11"	4A16	3		11¾"	2'-11¼"					2'-9¾"		11¾"	1'-11½"
10	#4	4'-0½"	4A17	3		1'-6"	2'-6½"					2'-4¾"		10"	2'-4"



* USE IN CONJUNCTION WITH THE CONTRACT DRAWINGS *
- FOR SECTIONS SEE CONTRACT DRAWINGS -



THIS PLACING DRAWING WAS PREPARED FROM CONTRACT DOCUMENTS DATED: 03/20/20

Cust: PPC CONSTRUCTION,INC

Project: TIMBER RIDGE MULTI-PLATE

For Approval 11/19/20
Issue Date

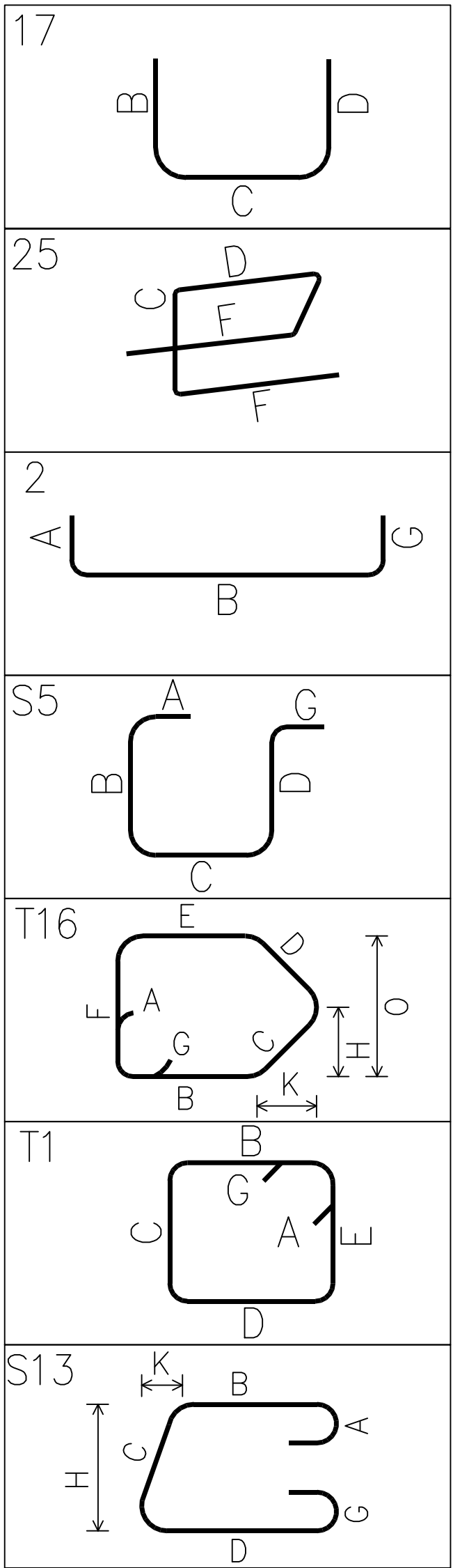
JOB # 045-20045257

Drawing #:
(Structure) R01K

0

MST

Total Qty.	Bar Size	Total Length	Bend Mark	Bend type	BENDING DIMENSIONS										
					A	B	C	D	E	F/R	G	H	J	K	O
26	#4	2'-5¼"	4A06	S13		7¼"	11"	11"				10½"		3½"	
248	#4	8'-4"	4A18	25		1'-6"	2'-4"	8"	2'-4"	1'-6"		2'-3¼"		1'-1½"	
111	#4	8'-5½"	4A19	25		1'-6"	2'-4¾"	8"	2'-4¾"	1'-6"		2'-4"		1'-2"	
24	#4	3'-0"	4C01	T16		7"	11"	11"	7"			7½"	8¾"	8"	1'-2¼"
50	#5	5'-2½"	5A01	T1	5½"	6¾"	1'-7"	6¾"	1'-7"		5½"				
50	#5	3'-6½"	5A02	T1	5½"	6¾"	9"	6¾"	9"		5½"				
2	#5	6'-0½"	5C01	3		3'-0"	3'-0½"					2'-11½"		8¾"	3'-8¾"
2	#5	7'-10½"	5C02	3		3'-11"	3'-11½"					3'-11"		6¾"	4'-5¾"
2	#5	7'-10½"	5C03	3		3'-11"	3'-11½"					3'-2½"		2'-3¾"	6'-2¾"
2	#5	6'-2"	5C04	3		3'-1"	3'-1"					2'-5½"		1'-10½"	4'-11½"
488	#6	9'-4"	6A01	S5	1'-4"	5'-5"	2'-7"								
488	#6	6'-6"	6A02	S5	1'-4"	2'-7"	2'-7"								
488	#6	7'-11½"	6A03	S5	1'-4"	4'-0½"	2'-7"								
244	#6	5'-0"	6A04	2	1'-4"	2'-4"					1'-4"				
232	#6	8'-4"	6A06	17		2'-1"	6'-3"								
1	#6	14'-10"	6C01	17		2'-5"	12'-5"								
1	#6	13'-10"	6C06	17		2'-5"	11'-5"								
1	#6	11'-11"	6C07	17		2'-5"	9'-6"								
28	#9	11'-1"	9A01	17		1'-7"	9'-6"								
24	#9	9'-4"	9A02	2	2'-6"	6'-10"									



LAP SCHEDULE		
3000 psi CLASS-B LAP CASE-1		
BAR DIA	TOP	OTHERS
#3	28"	22"
#4	37"	29"
#5	47"	36"
#6	56"	43"
#7	81"	63"
#8	93"	72"
#9	105"	81"
#10	118"	91"

* USE IN CONJUNCTION WITH THE CONTRACT DRAWINGS *
- FOR SECTIONS SEE CONTRACT DRAWINGS -



THIS PLACING DRAWING WAS PREPARED FROM CONTRACT DOCUMENTS DATED: 03/20/20

Cust: PPC CONSTRUCTION,INC

Project: TIMBER RIDGE MULTI-PLATE

For Approval 11/19/20
Issue Date

JOB # 045-20045257

Drawing #:
(Structure) R01L

0

MST