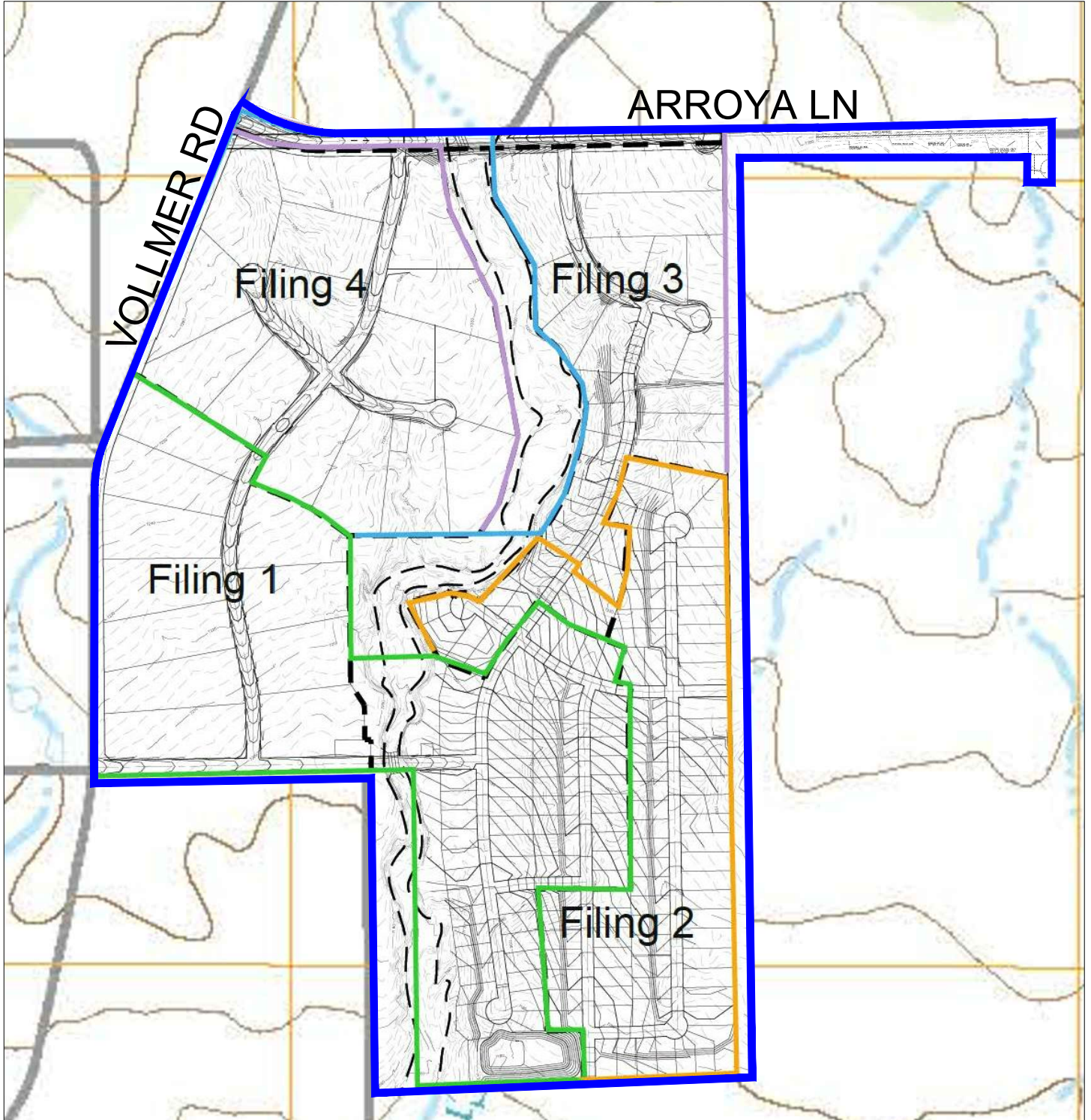
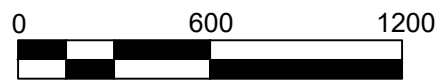


NOI MAP
RETREAT AT TIMBERRIDGE
VOLLMER RD & ARROYA LN
UNINCORPORATED EL PASO COUNTY, CO 80908
OWNER/OPERATOR: TIMBER RIDGE DEVELOPMENT LLC
LATITUDE 38.98370°, LONGITUDE -104.66598°



TOTAL PROJECT AREA
AREA OF PROJECT DISTURBANCE: ~210 ACRES



1 inch = 600 feet