

- NOTES:
1. ACTIVE SITE MAP REFLECTS CURRENT ACTIVITY, POTENTIAL POLLUTANT SOURCES, AND BMP'S IN USE.
 2. SEE PLANNED BMP MAPS FOR ADDITIONAL DETAIL.
 3. EROSION CONTROL MEASURES SHOULD BE INSTALLED FROM AREAS WITH FINAL LANDSCAPING. SEE SWAMP NARRATIVE FOR FURTHER REQUIREMENTS.
 4. MAP LEGEND CAN BE FOUND ON SEPARATE SHEET IN THIS SWAMP.
 5. IT IS THE PERMITTEE'S RESPONSIBILITY TO ADJUST OR REMOVE INLET PROTECTIONS AS NECESSARY PRIOR TO LARGE RAIN EVENTS THAT MAY EXCEED THE NORMAL CAPACITY OF THE INLET PROTECTION TO PREVENT FLOODING AND POTENTIAL PROPERTY DAMAGE.

NOTE: SCALES SHOWN ARE FOR 11x17 SHEETS. FOR OTHER SIZES.

0 180 320
1 inch = 180 feet

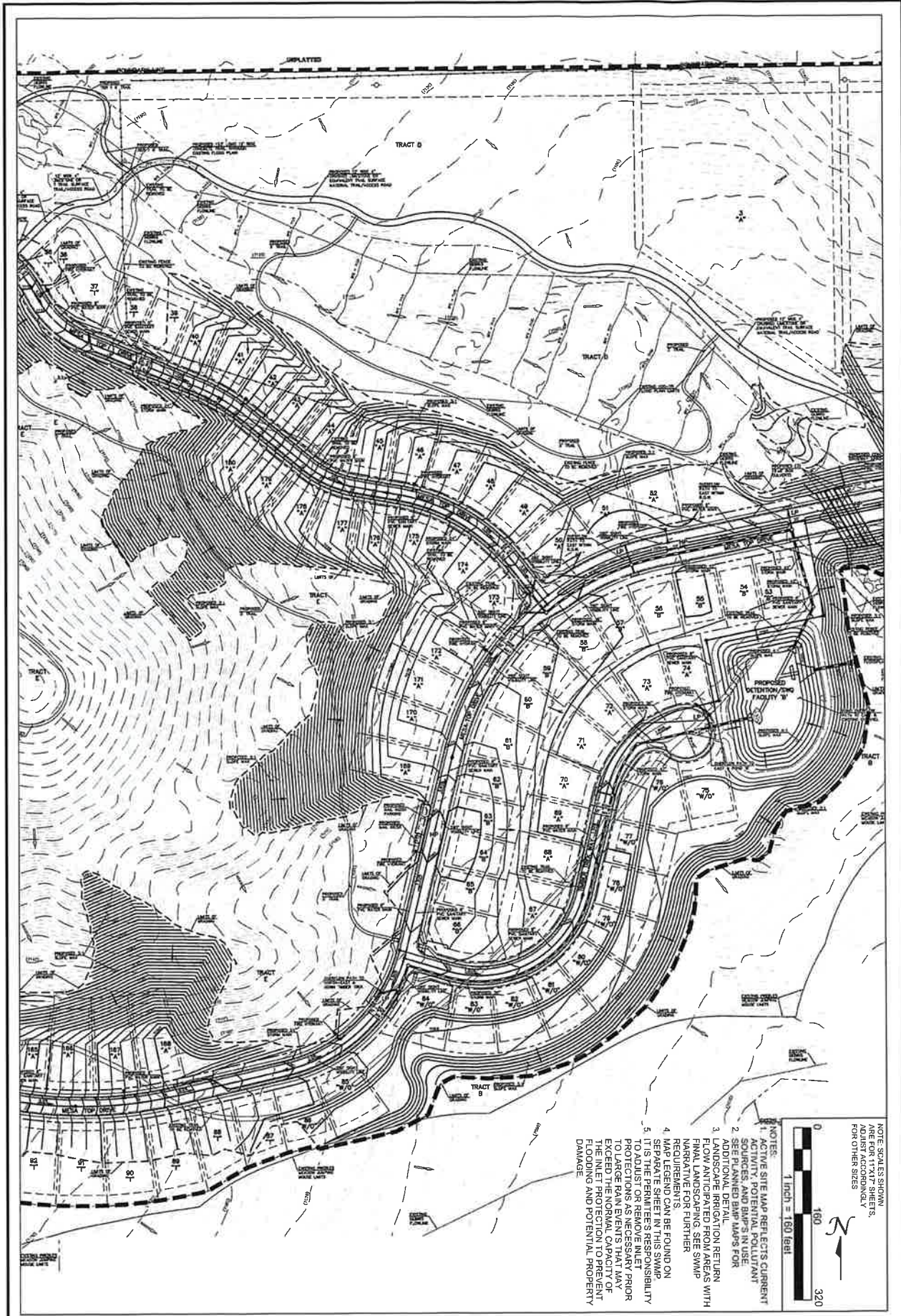
PROJECT:	FOREST LAKES PHASE 2
	ACTIVE SITE MAP
OWNER/PERMITTEE:	FOREST LAKES RESIDENTIAL DEVELOPMENT LLC

CMS
Environmental Solutions

1776 S. Broadway
Denver, CO 80210
P: (720) 343-6561
F: (303) 923-3416

NO.	DATE	REVISIONS	ENG.	CAD.
0	10/7/2019	ORIGINAL	DH	E.J.

ASM-1



NOTE: SCALES SHOWN ARE FOR 11x17 SHEETS. ADJUST ACCORDINGLY FOR OTHER SIZES



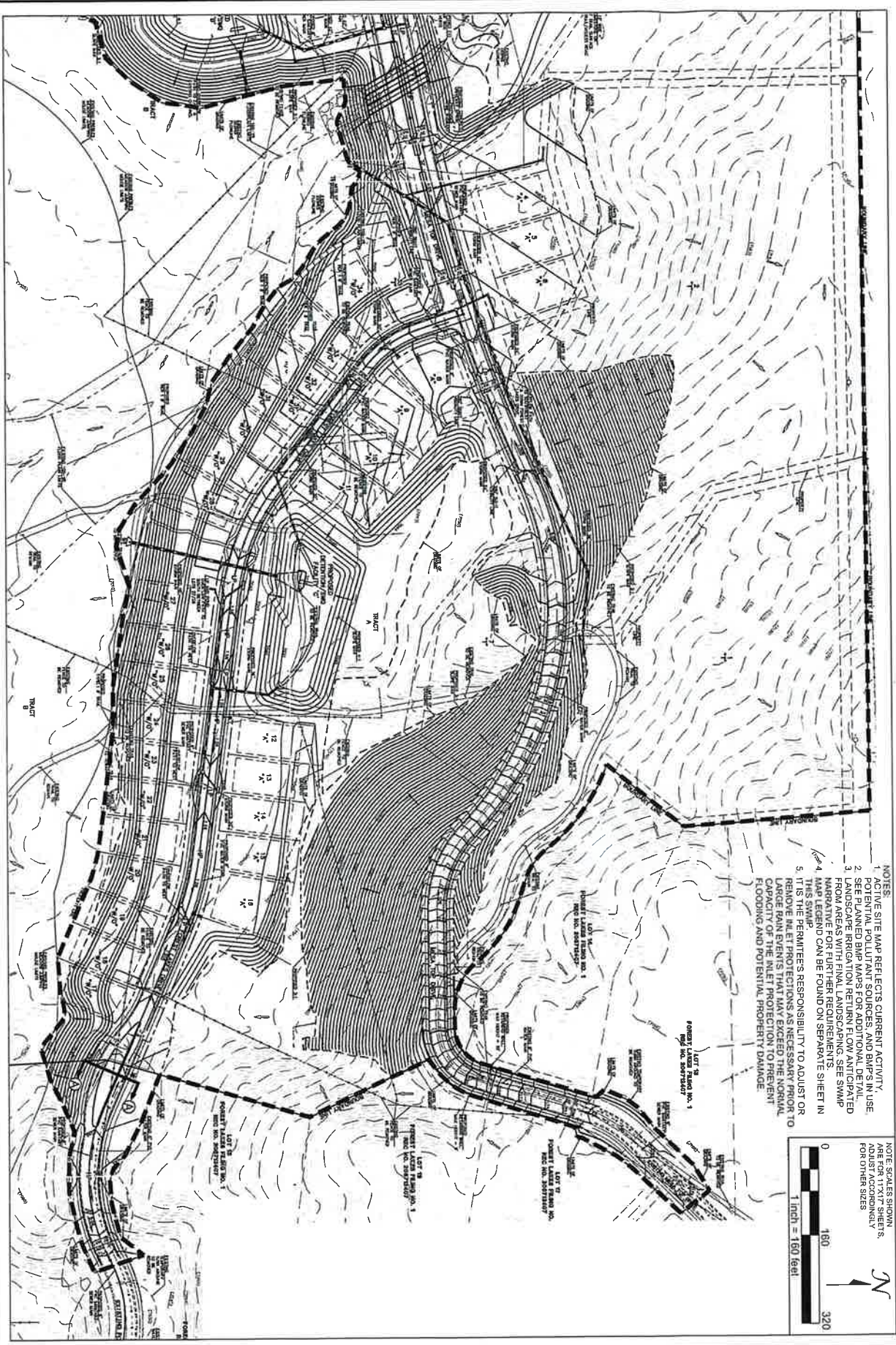
- NOTES:
1. ACTIVE SITE MAP REFLECTS CURRENT SOURCES AND BMP'S IN USE. SEE PLANNED BMP MAPS FOR ADDITIONAL DETAIL.
 2. LANDSCAPE IRRIGATION RETURN FLOW ANTICIPATED FROM AREAS WITH MANGLINE FOR FURTHER REQUIREMENTS.
 3. MAP LEGEND CAN BE FOUND ON SEPARATE SHEET IN THIS SWMP.
 4. IT IS THE PERMITTEE'S RESPONSIBILITY TO ADJUST OR REMOVE INLET PRIOR TO LARGE RAIN EVENTS THAT MAY EXCEED THE NORMAL CAPACITY OF THE INLET PROTECTION TO PREVENT FLOODING AND POTENTIAL PROPERTY DAMAGE.

ASM-2	PROJECT:	FOREST LAKES PHASE 2
	SHEET TITLE:	ACTIVE SITE MAP
	OWNER/PERMITTEE:	FOREST LAKES RESIDENTIAL DEVELOPMENT LLC

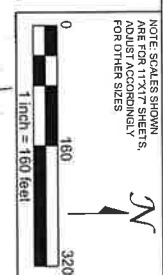


1778 S. Broadway
Denver, CO 80210
P: (720) 343-5561
F: (303) 923-3416

NO.	DATE	REVISIONS	ENG.	CAD.
		ORIGINAL		
0	10/7/2019			



- NOTES:
1. ACTIVE SITE MAP REFLECTS CURRENT ACTIVITY.
 2. POTENTIAL POLLUTANT SOURCES AND BMPs IN USE.
 3. SEE PLANNED BMP MAPS FOR ADDITIONAL DETAIL.
 4. LANDSCAPE IRRIGATION RETURN FLOW ANTICIPATED FROM AREAS WITH FINAL LANDSCAPING. SEE SWAMP MANAGEMENT PLAN FOR DETAILED INFORMATION. SWAMP MATERIALS CAN BE FOUND ON SEPARATE SHEET IN THIS SWAMP.
 5. IT IS THE PERMITTEE'S RESPONSIBILITY TO ADJUST OR REMOVE MLEET PROTECTIONS AS NECESSARY PRIOR TO LARGE RAIN EVENTS THAT MAY EXCEED THE NORMAL CAPACITY OF THE MLEET PROTECTION TO PREVENT FLOODING AND POTENTIAL PROPERTY DAMAGE.



PROJECT:	FOREST LAKES PHASE 2	
	SHEET TITLE:	
	ACTIVE SITE MAP	
OWNER/PERMITTEE:	FOREST LAKES RESIDENTIAL DEVELOPMENT LLC	

1778 S. Broadway
 Denver, CO 80210
 P. (720) 343-4551
 F. (303) 823-3416

NO.	DATE	REVISIONS	ENG.	CAD.
0	10/7/2018	ORIGINAL		

ASM-3