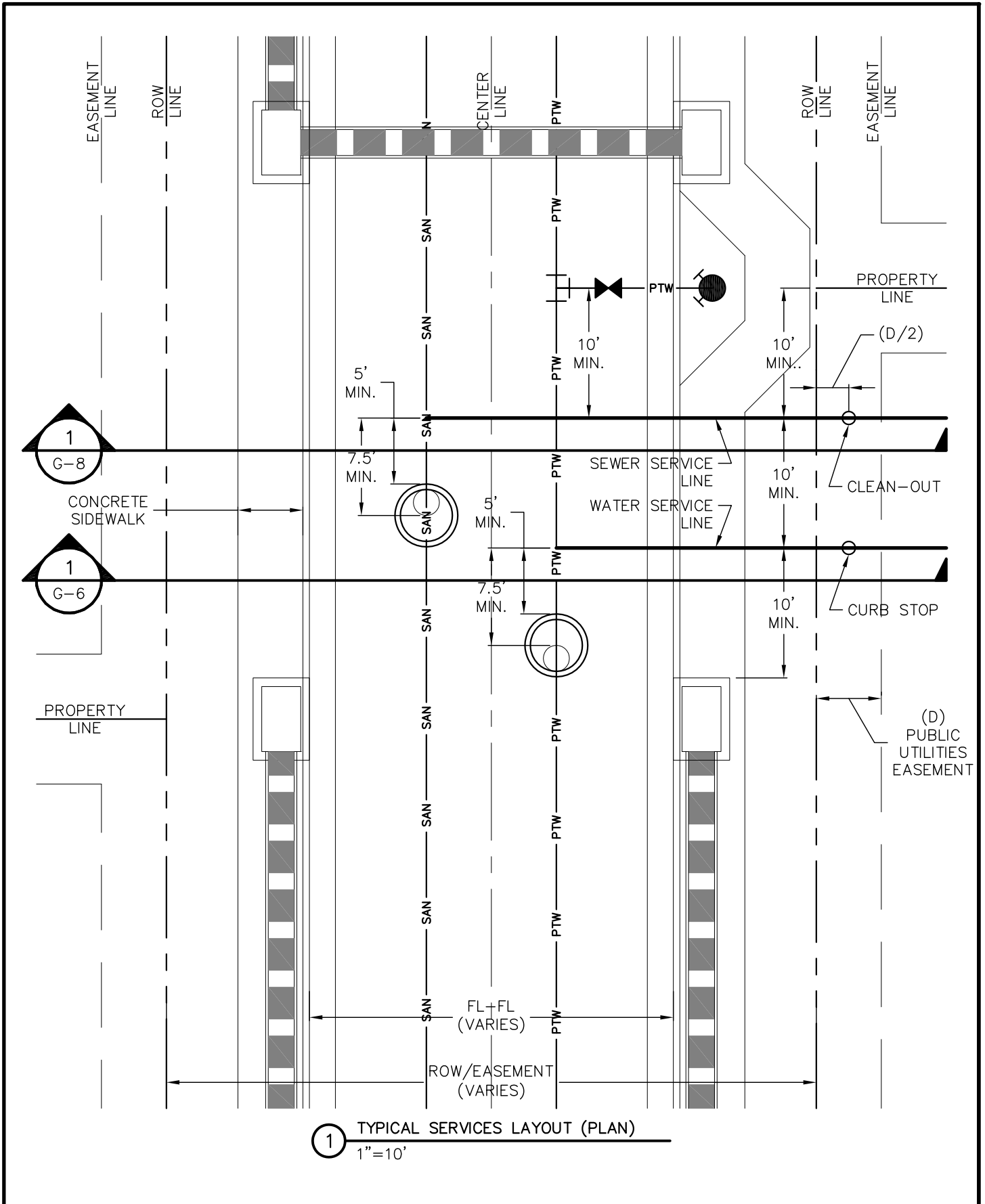


1 TYPICAL UTILITIES LAYOUT (PLAN)
1"=10'

	TYPICAL UTILITIES LAYOUT (PLAN)	G-3
	GENERAL	-
	THIS CONSTRUCTION DETAIL SHOWS GENERAL CONFORMANCE TO SYSTEM SPECIFICATIONS AND MAY NEED TO BE ADJUSTED FOR SPECIFIC APPLICATIONS.	MAY 13, 2014



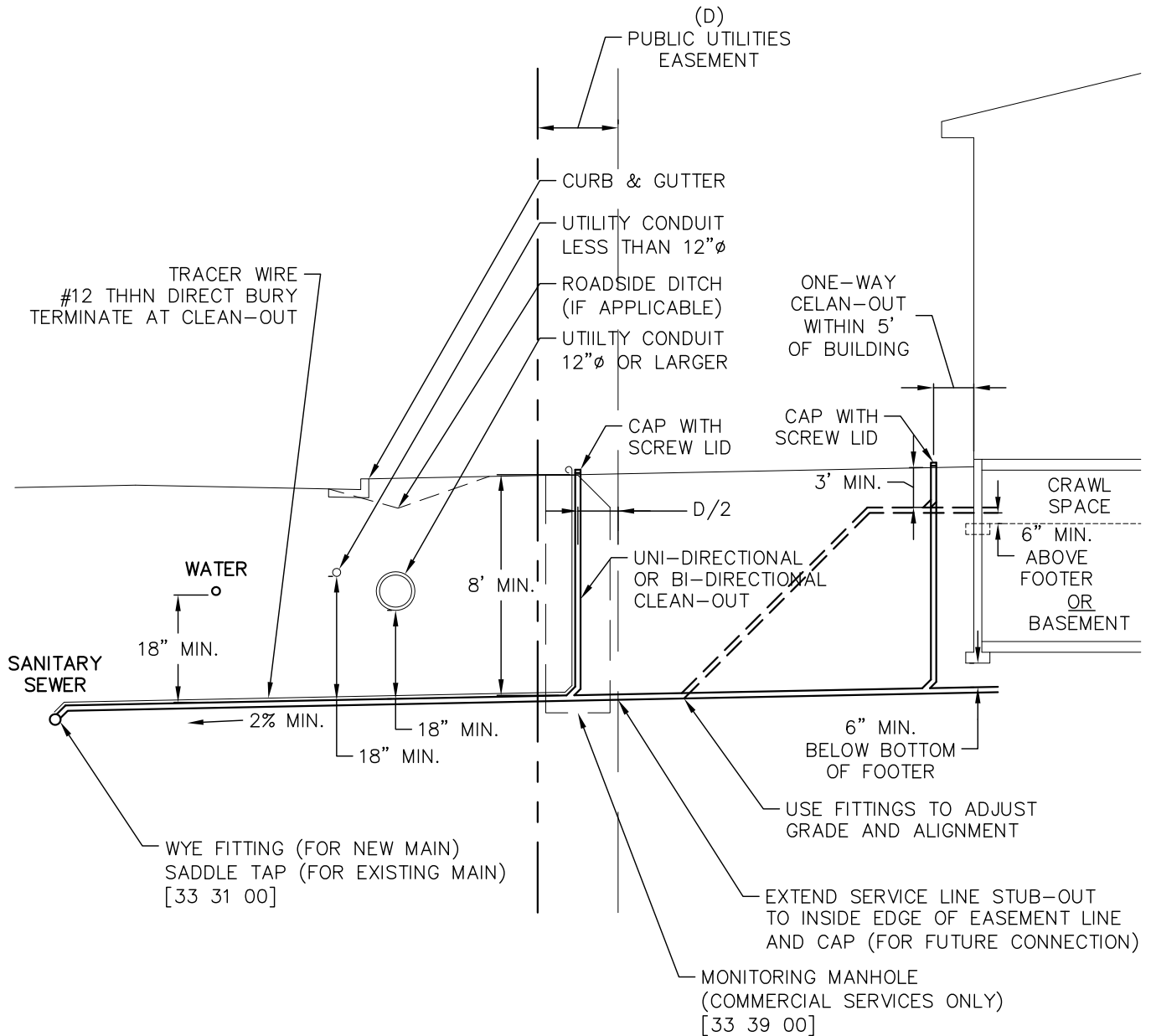
1 TYPICAL SERVICES LAYOUT (PLAN)
1"=10'

	TYPICAL SERVICES LAYOUT (PLAN)	G-5
	GENERAL	-
	THIS CONSTRUCTION DETAIL SHOWS GENERAL CONFORMANCE TO SYSTEM SPECIFICATIONS AND MAY NEED TO BE ADJUSTED FOR SPECIFIC APPLICATIONS.	MAY 13, 2014

REFER TO WATER & SEWER SERVICE LINE EQUIPMENT SPECIFICATIONS FOR SUPPLEMENTAL INFORMATION
(APP C OF THE SYSTEM SPECIFICATIONS)

GENERAL NOTES:

- PROVIDE METAL T-POST AT CURB STOP WHEN CONSTRUCTION OF STUB-OUT TO LOT IS COMPLETE. T-POST MAY BE REMOVED AFTER CONNECTION TO SERVICE STUB.
- INTERMEDIATE CLEAN-OUT ASSEMBLIES REQUIRED AT 100' INTERVALS (FOR UNI-DIRECTIONAL) OR 200' INTERVALS (FOR BI-DIRECTIONAL) BETWEEN PROPERTY LINE CLEAN-OUT AND BUILDING CLEAN-OUT..

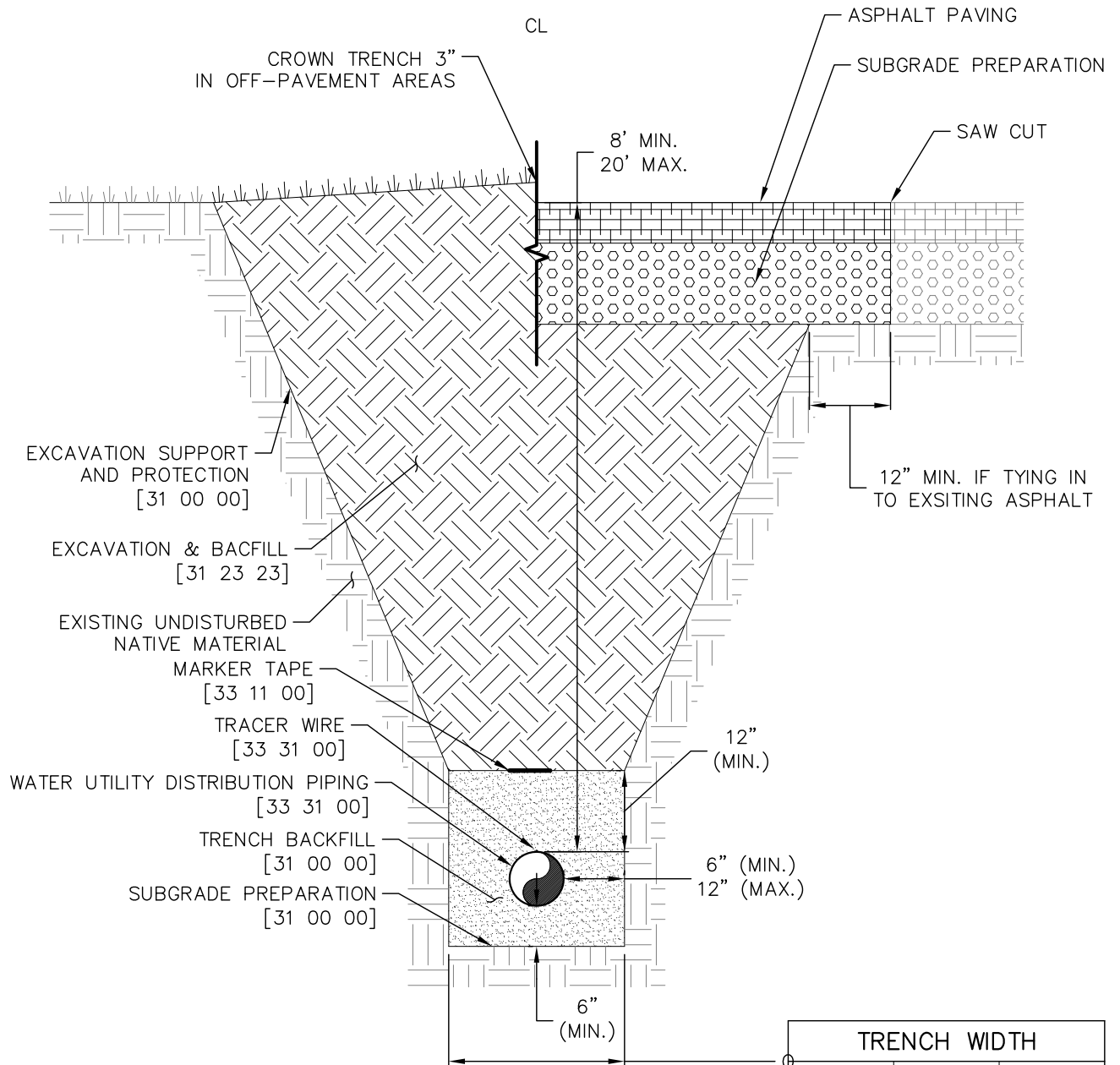


1 TYPICAL SEWER SERVICE (SECTION)
1"=10'

	TYPICAL SEWER SERVICE (SECTION)	G-8
	GENERAL	-
	THIS CONSTRUCTION DETAIL SHOWS GENERAL CONFORMANCE TO SYSTEM SPECIFICATIONS AND MAY NEED TO BE ADJUSTED FOR SPECIFIC APPLICATIONS.	MAY 13, 2014

VEGETATED SURFACE

PAVED SURFACE



1 TYPICAL TRENCH SECTION
1"=2'

TRENCH WIDTH		
PIPE DIAMETER	MINIMUM WIDTH	MAXIMUM WIDTH
4"	1'-4"	2'-4"
6"	1'-6"	2'-6"
8"	1'-8"	2'-8"
10"	1'-10"	2'-10"
12"	2'-0"	3'-0"
14"	2'-2"	3'-2"



WOODMOOR
WATER & SANITATION DISTRICT NO. 1

TYPICAL SEWER TRENCH SECTION
SANITARY UTILITY SEWERAGE PIPING

S-1

33 31 00

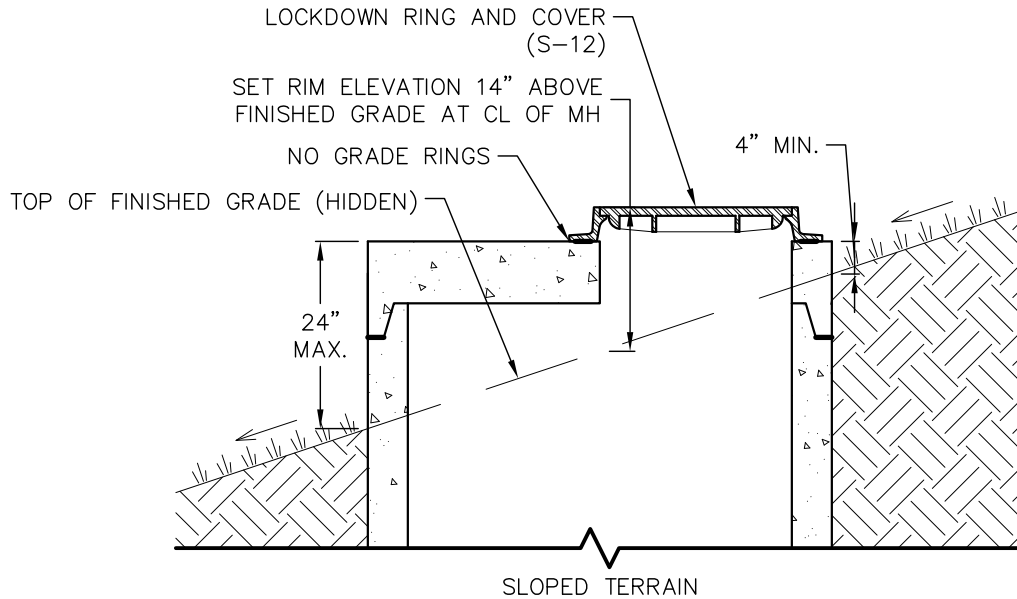
THIS CONSTRUCTION DETAIL SHOWS GENERAL CONFORMANCE TO SYSTEM SPECIFICATIONS AND MAY NEED TO BE ADJUSTED FOR SPECIFIC APPLICATIONS.

MAY 13, 2014

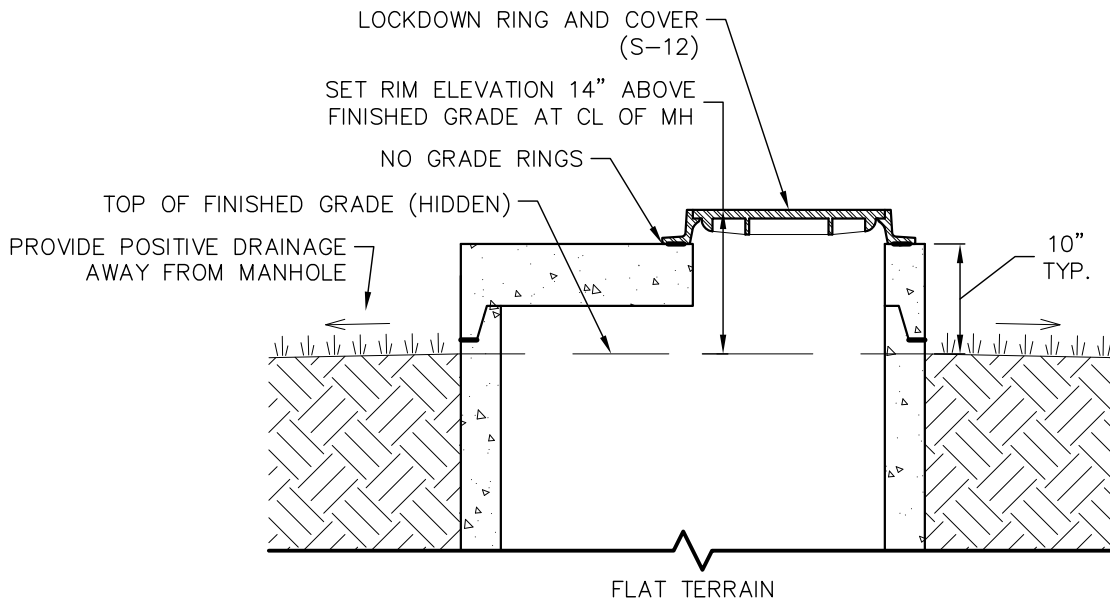
SEE DRAWING S-9 FOR FINISHING IN PAVED SURFACES

APPLICATION NOTES:

- USE FLAT TOP MANHOLES IN LOCATIONS OUTSIDE OF ASPHALT



① MANHOLE OUTSIDE OF PAVEMENT
1" = 2'



② MANHOLE OUTSIDE OF PAVEMENT
1" = 2'



WOODMOOR
WATER & SANITATION DISTRICT NO. 1

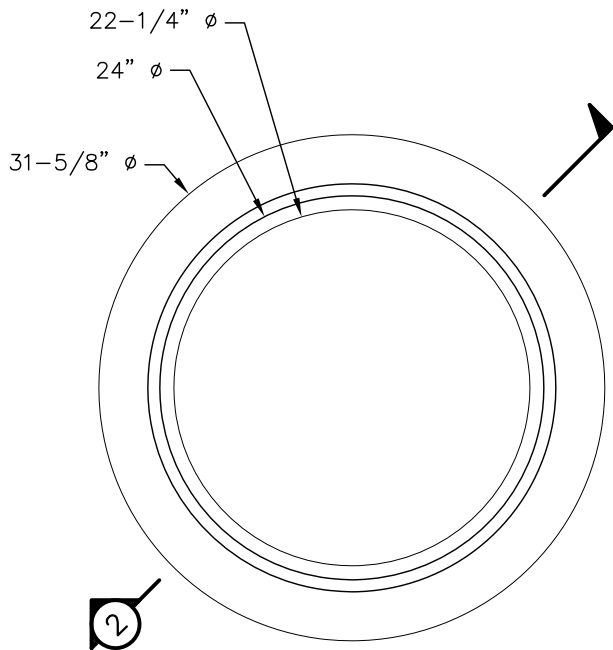
MANHOLES IN UNPAVED AREAS
SANITARY UTILITY SEWERAGE STRUCTURES

S-10

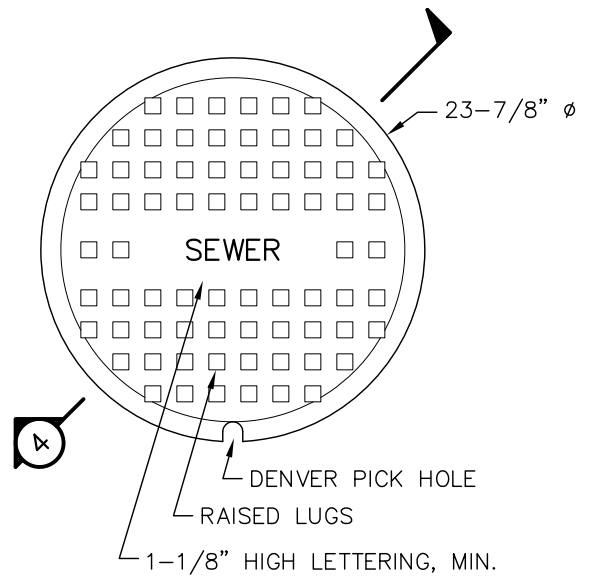
33 39 00

THIS CONSTRUCTION DETAIL SHOWS GENERAL CONFORMANCE TO SYSTEM SPECIFICATIONS AND MAY NEED TO BE ADJUSTED FOR SPECIFIC APPLICATIONS.

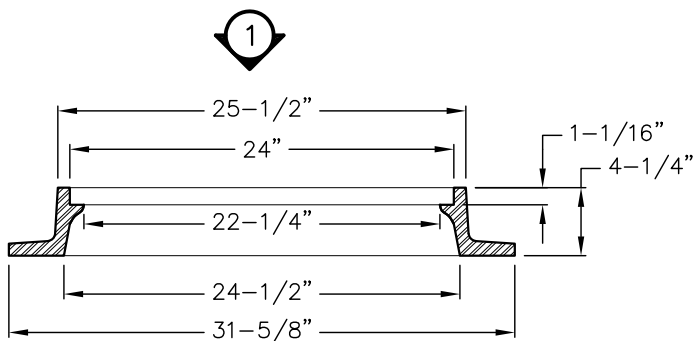
MAY 13, 2014



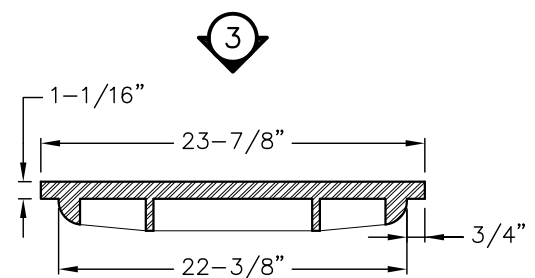
1 REGULAR RING PLAN
1" = 1'



3 REGULAR COVER PLAN
1" = 1'



2 REGULAR RING SECTION
1" = 1'



4 REGULAR COVER SECTION
1" = 1'



WOODMOOR
WATER & SANITATION DISTRICT NO. 1

STANDARD SEWER RING & COVER
SANITARY UTILITY SEWERAGE STRUCTURES

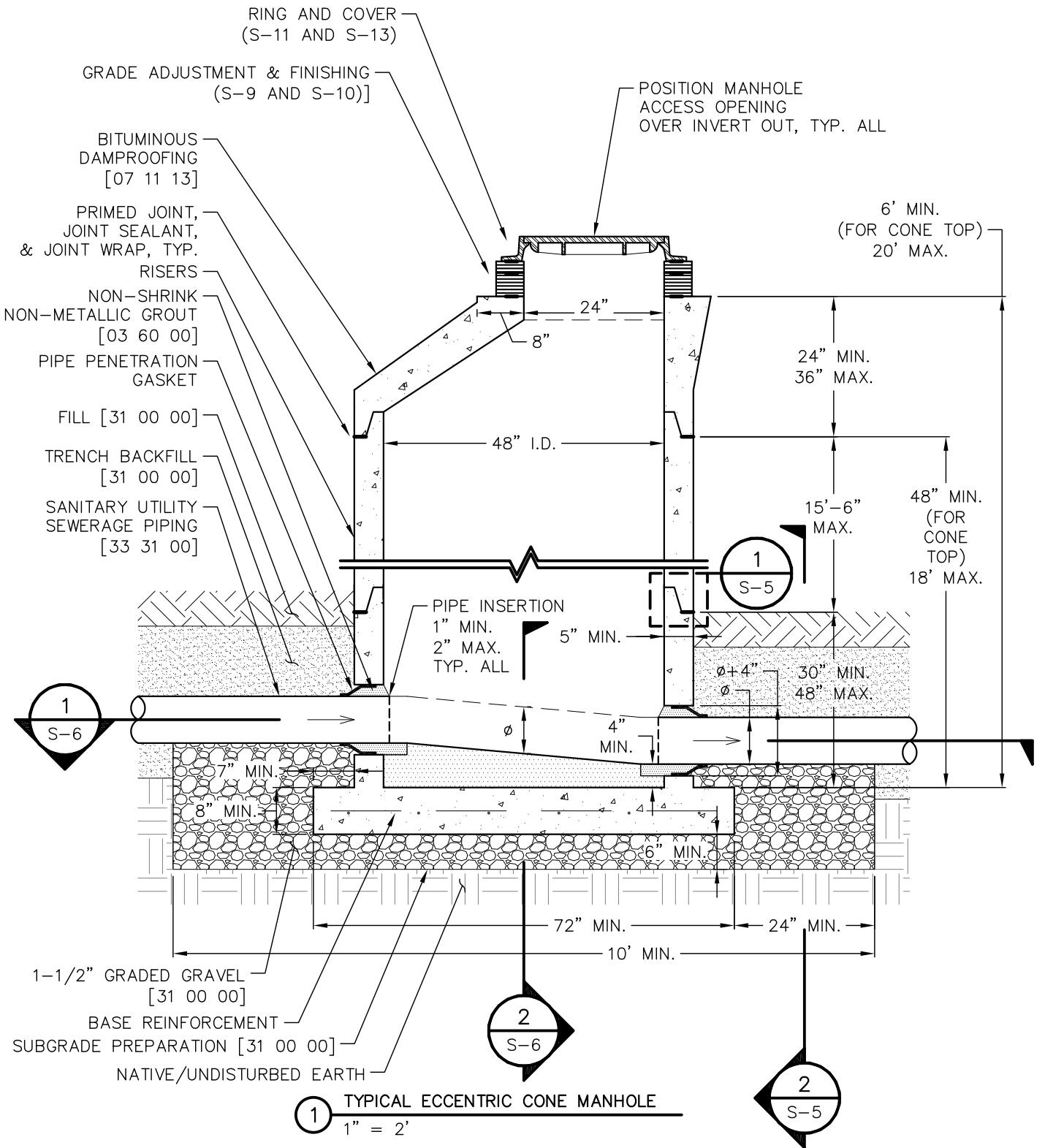
THIS CONSTRUCTION DETAIL SHOWS GENERAL CONFORMANCE TO SYSTEM SPECIFICATIONS AND MAY NEED TO BE ADJUSTED FOR SPECIFIC APPLICATIONS.

S-11

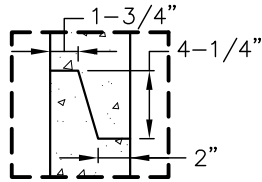
33 39 00

MAY 13, 2014

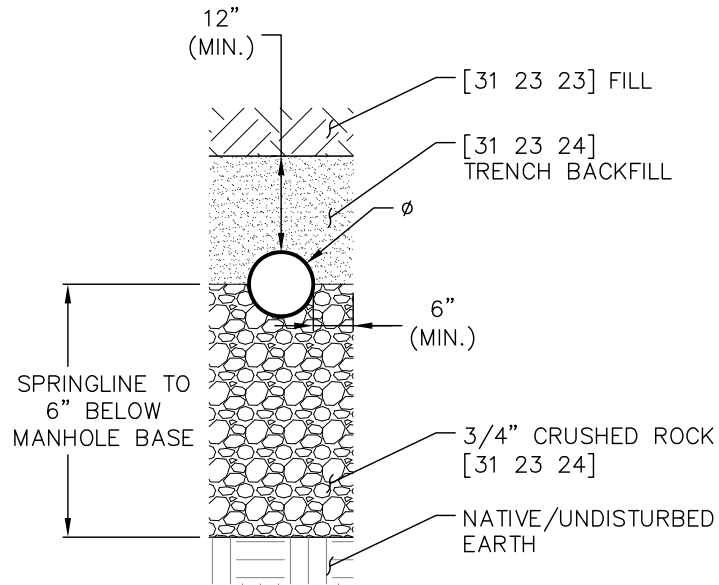
SEE DRAWING S-3 FOR TYPICAL FLAT TOP MANHOLE



TYPICAL ECCENTRIC CONE MANHOLE	S-2
SANITARY UTILITY SEWERAGE STRUCTURES	33 39 00
THIS CONSTRUCTION DETAIL SHOWS GENERAL CONFORMANCE TO SYSTEM SPECIFICATIONS AND MAY NEED TO BE ADJUSTED FOR SPECIFIC APPLICATIONS.	MAY 13, 2014



① TONGUE AND GROOVE JOINT
1" = 1'



② PIPE BEDDING AT CONNECTION TO MANHOLE
1" = 2'



WOODMOOR
WATER & SANITATION DISTRICT NO. 1

MANHOLE DETAILS
SANITARY UTILITY SEWERAGE STRUCTURES

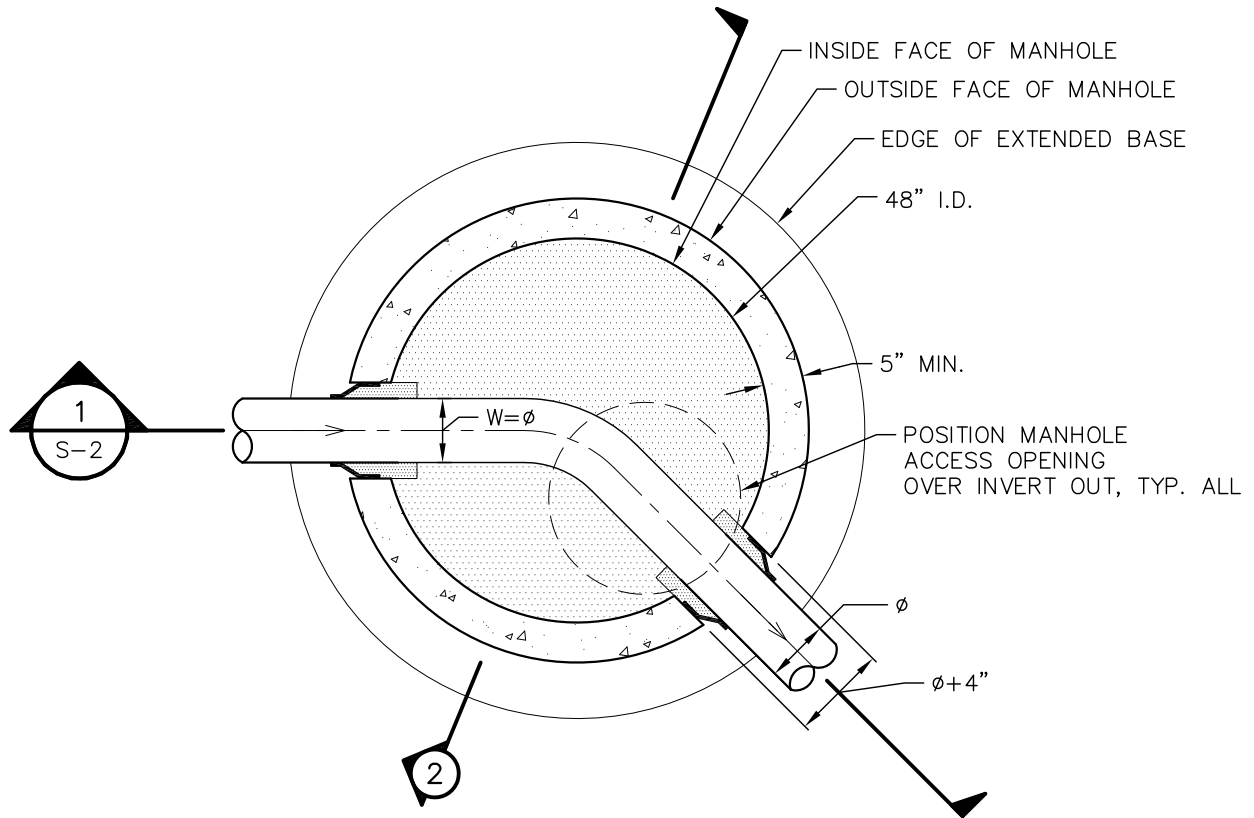
S-5

33 39 00

THIS CONSTRUCTION DETAIL SHOWS GENERAL CONFORMANCE TO SYSTEM SPECIFICATIONS AND MAY NEED TO BE ADJUSTED FOR SPECIFIC APPLICATIONS.

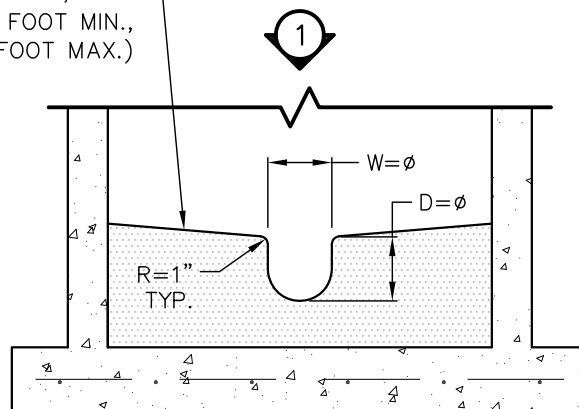
MAY 13, 2014

SEE DRAWING S-7 FOR HIGH-VELOCITY CHANNEL AND BENCH



① STANDARD CHANNEL AND BENCH (PLAN)
1" = 2'

SLOPE BENCH TOWARDS CHANNEL
AT 1" PER FOOT, TYP.
(½" PER FOOT MIN.,
1-½" PER FOOT MAX.)



② STANDARD CHANNEL AND BENCH (SECTION)
1" = 2'



WOODMOOR
WATER & SANITATION DISTRICT NO. 1

SEWER MANHOLE STANDARD BASE
SANITARY UTILITY SEWERAGE STRUCTURES

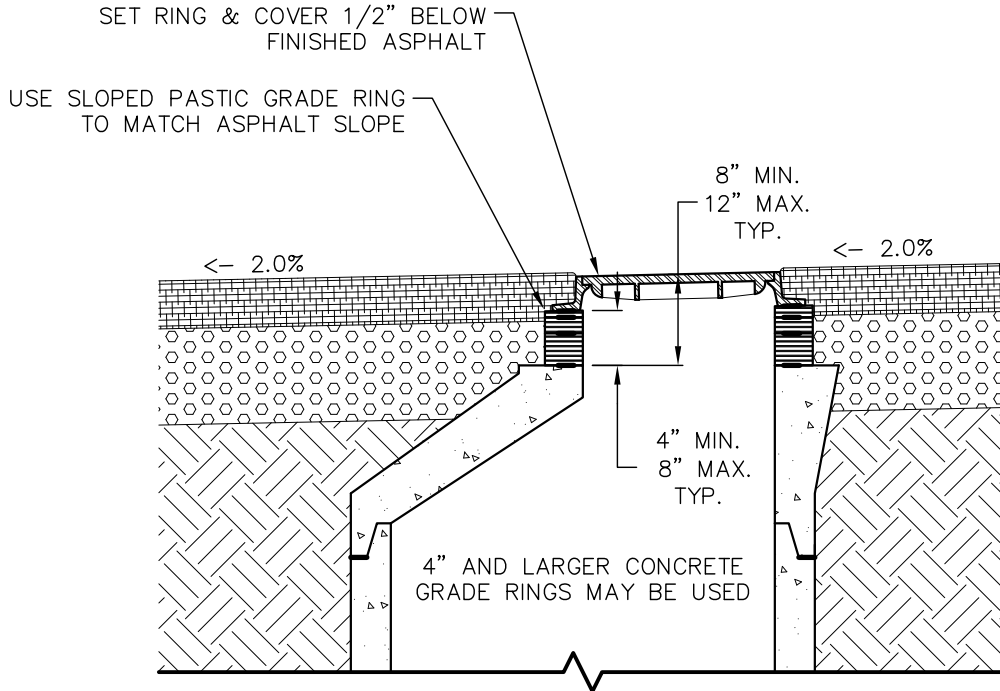
THIS CONSTRUCTION DETAIL SHOWS GENERAL CONFORMANCE TO SYSTEM SPECIFICATIONS AND MAY NEED TO BE ADJUSTED FOR SPECIFIC APPLICATIONS.

S-6

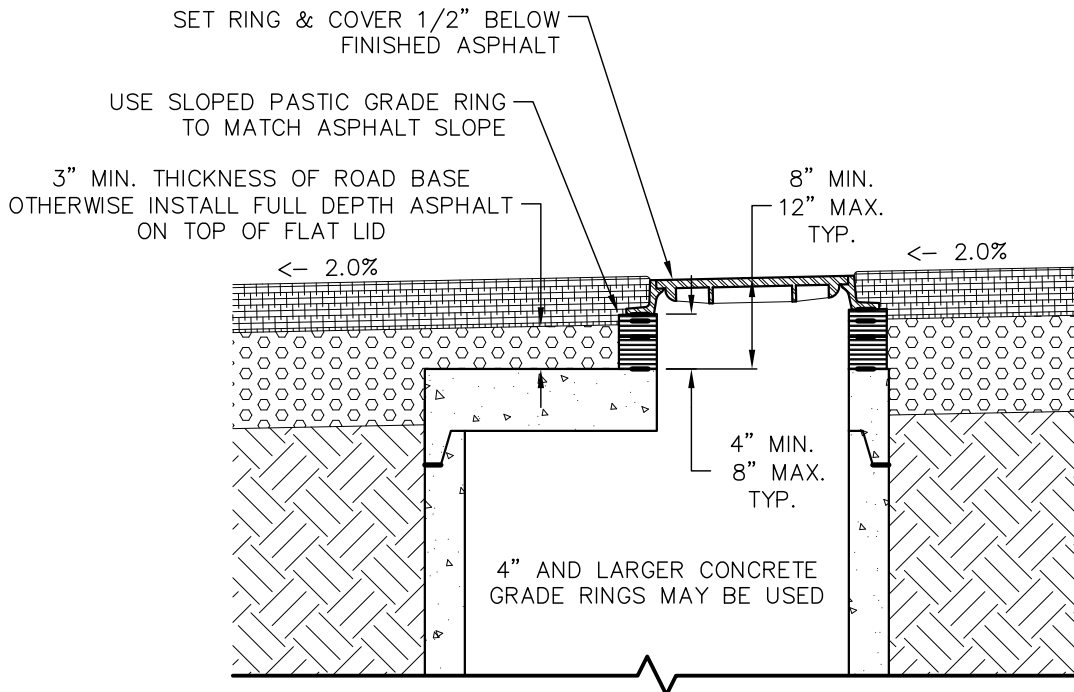
33 39 00

MAY 13, 2014

SEE DRAWING S-10 FOR FINISHING IN NON-PAVED SURFACES



1 CONE TOP MANHOLE IN PAVEMENT
1" = 2'



2 FLAT TOP MANHOLE IN PAVEMENT
1" = 2'



WOODMOOR
WATER & SANITATION DISTRICT NO. 1

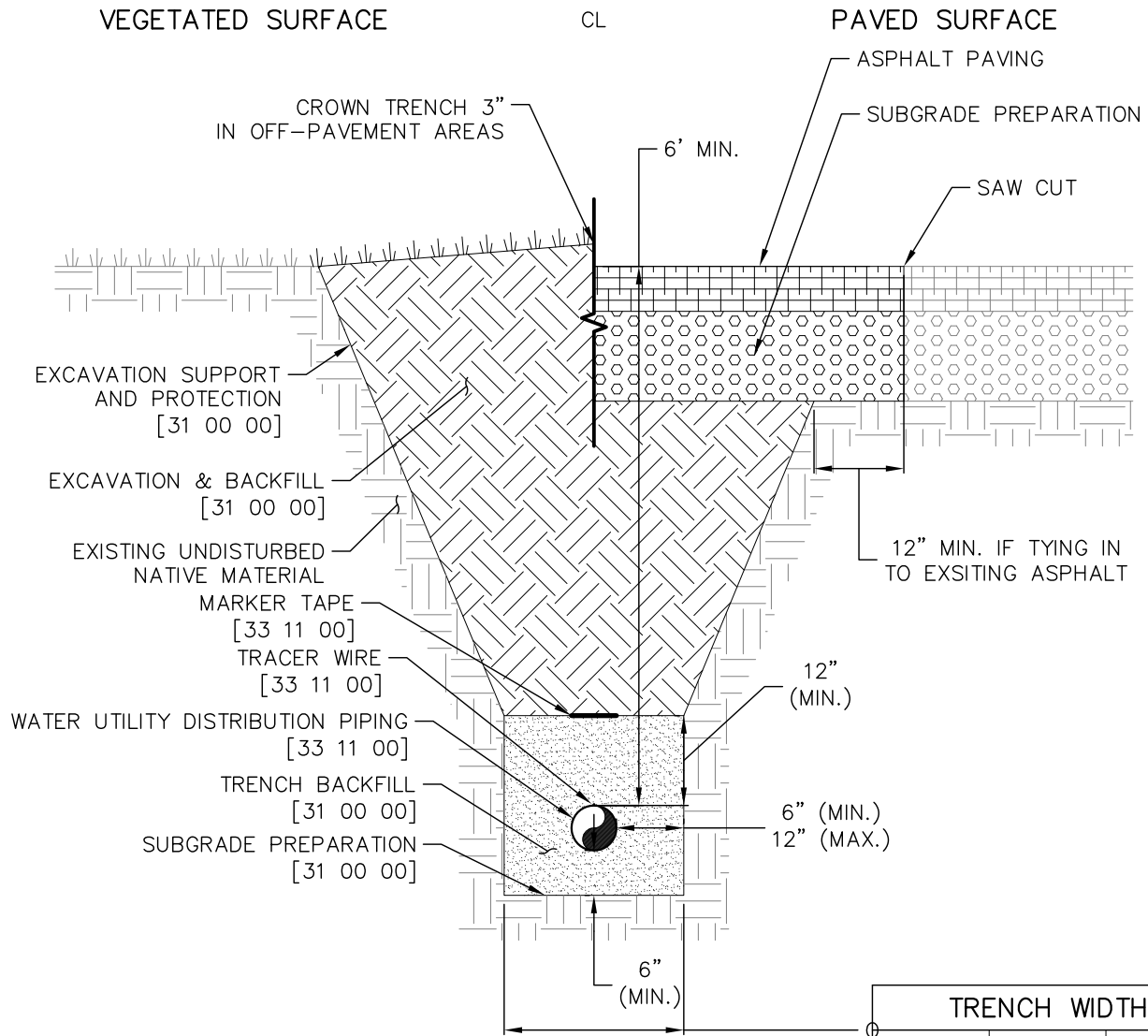
MANHOLES IN PAVED AREAS
SANITARY UTILITY SEWERAGE STRUCTURES

S-9

33 39 00

THIS CONSTRUCTION DETAIL SHOWS GENERAL CONFORMANCE TO SYSTEM SPECIFICATIONS AND MAY NEED TO BE ADJUSTED FOR SPECIFIC APPLICATIONS.

MAY 13, 2014



1 TYPICAL WATER TRENCH (SECTION)
1"=2'

TRENCH WIDTH		
PIPE DIAMETER	MINIMUM WIDTH	MAXIMUM WIDTH
4"	1'-4"	2'-4"
6"	1'-6"	2'-6"
8"	1'-8"	2'-8"
10"	1'-10"	2'-10"
12"	2'-0"	3'-0"
14"	2'-2"	3'-2"



WOODMOOR
WATER & SANITATION DISTRICT NO. 1

TYPICAL WATER TRENCH

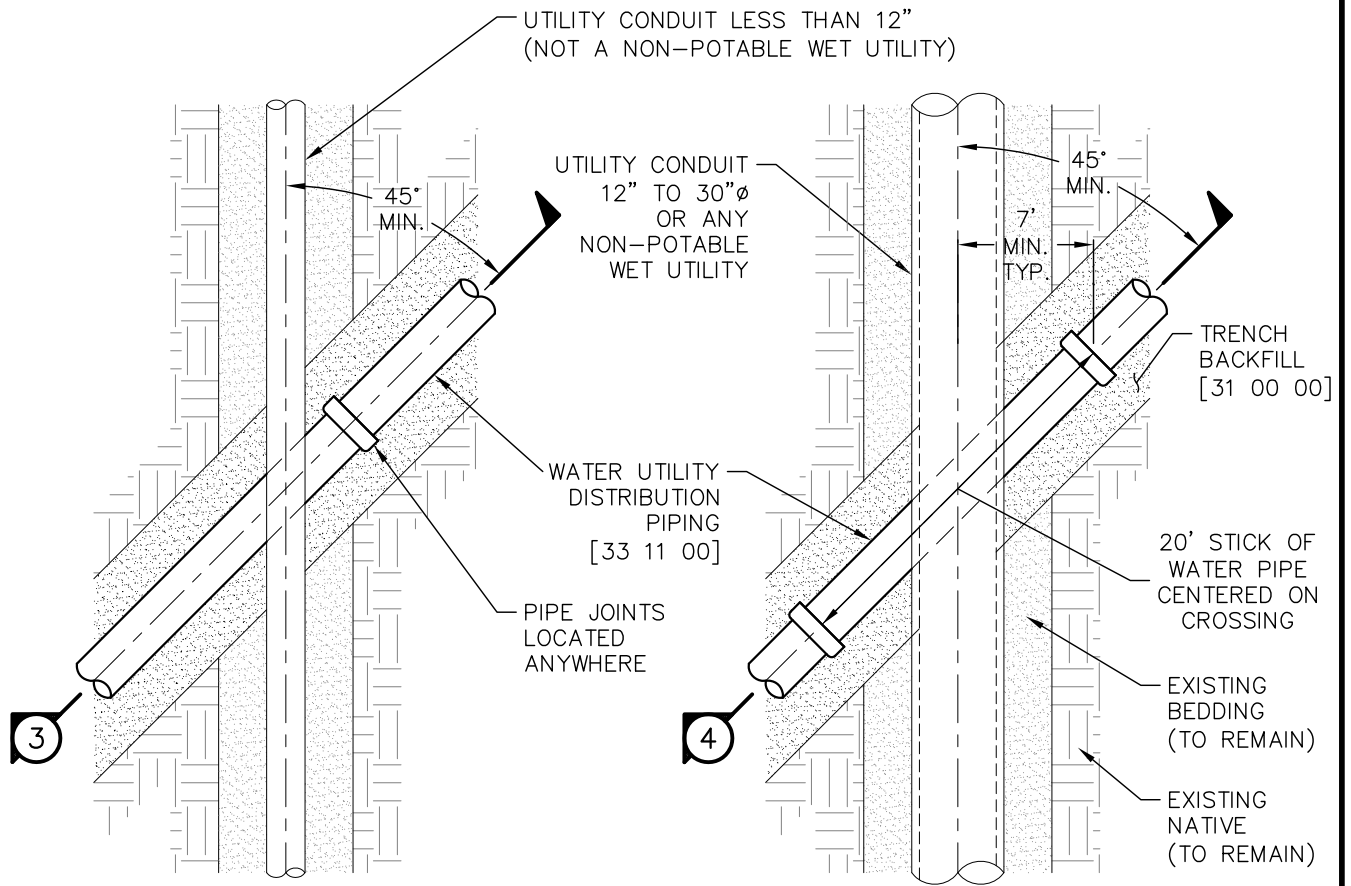
WATER UTILITY DISTRIBUTION PIPING

THIS CONSTRUCTION DETAIL SHOWS GENERAL CONFORMANCE TO SYSTEM SPECIFICATIONS AND MAY NEED TO BE ADJUSTED FOR SPECIFIC APPLICATIONS.

W-1

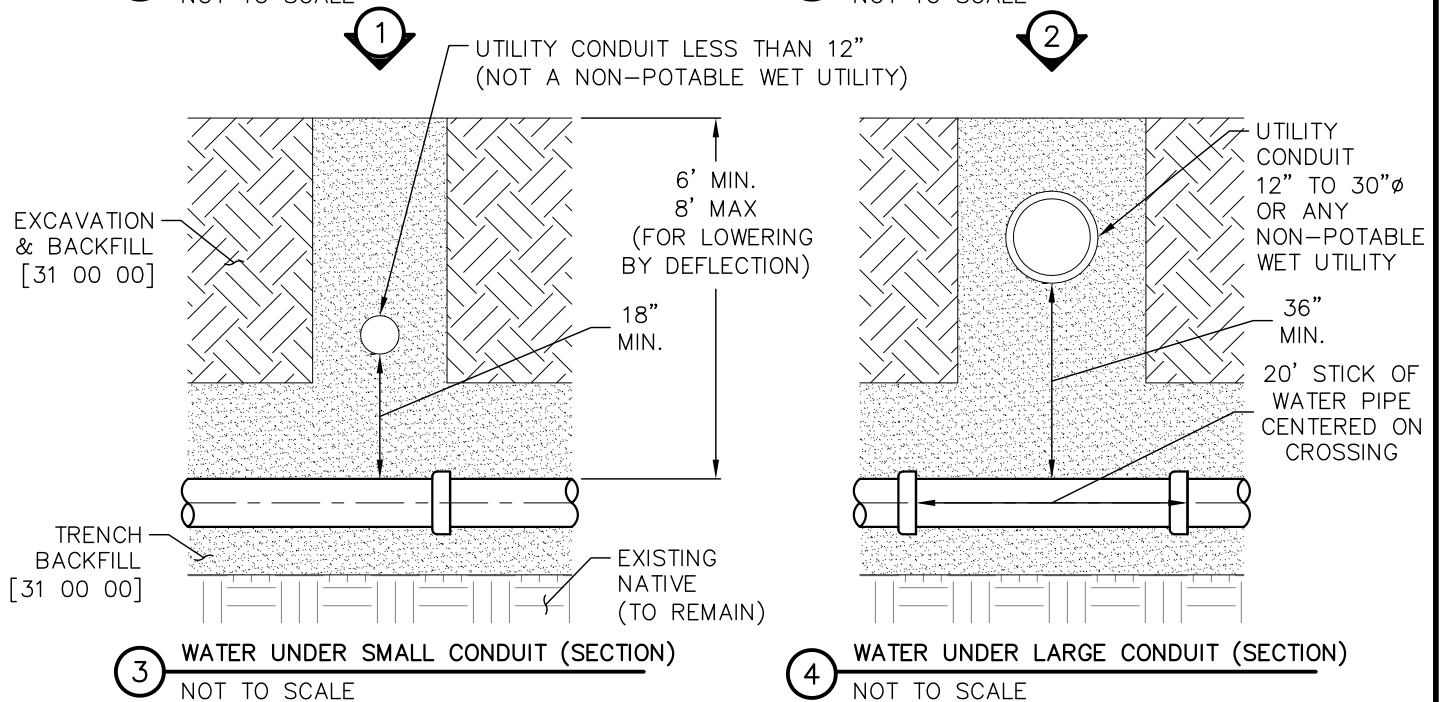
33 11 00

MAY 13, 2014



1 WATER UNDER SMALL CONDUIT (PLAN)
NOT TO SCALE

2 WATER UNDER LARGE CONDUIT (PLAN)
NOT TO SCALE



WOODMOOR
WATER & SANITATION DISTRICT NO. 1

WATER CROSSING UNDER UTILITIES

W-3

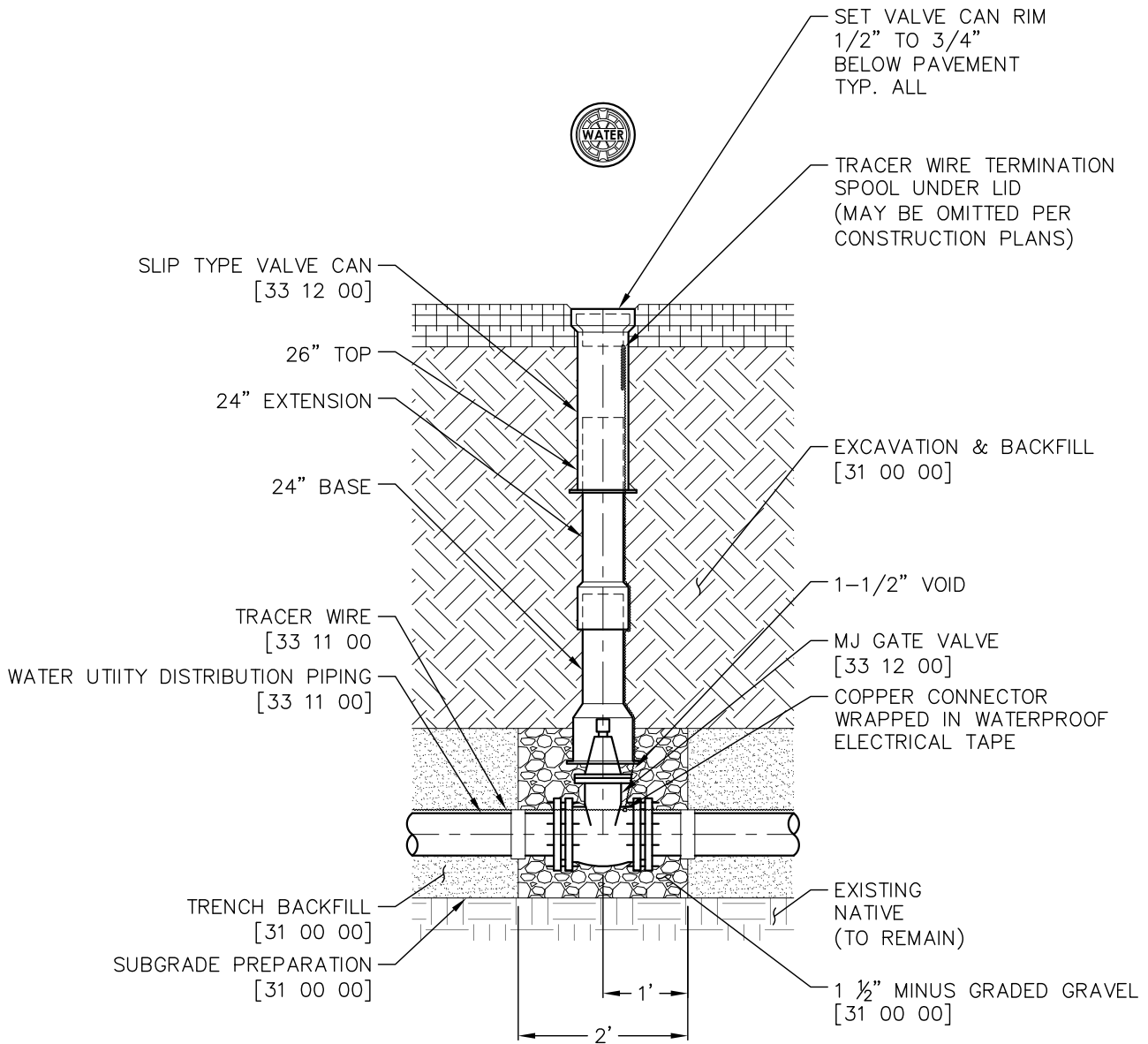
WATER UTILITY DISTRIBUTION PIPING

33 11 00

THIS CONSTRUCTION DETAIL SHOWS GENERAL CONFORMANCE TO SYSTEM SPECIFICATIONS AND MAY NEED TO BE ADJUSTED FOR SPECIFIC APPLICATIONS.

MAY 13, 2014

FOR INSTALLATIONS IN UNPAVED AREAS
SEE DRAWING W-6



① GATE VALVE DETAIL
1"=2'



WOODMOOR
WATER & SANITATION DISTRICT NO. 1

GATE VALVE

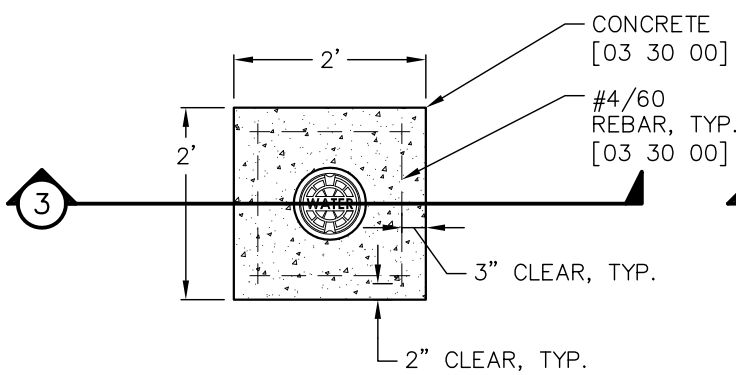
WATER UTILITY DISTRIBUTION EQUIPMENT

THIS CONSTRUCTION DETAIL SHOWS GENERAL CONFORMANCE TO SYSTEM SPECIFICATIONS AND MAY NEED TO BE ADJUSTED FOR SPECIFIC APPLICATIONS.

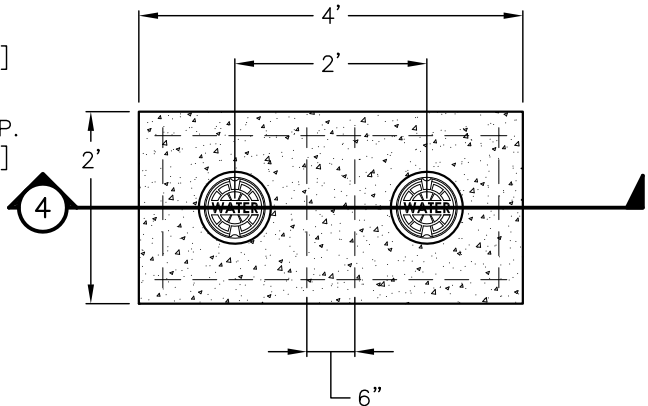
W-4

33 12 00

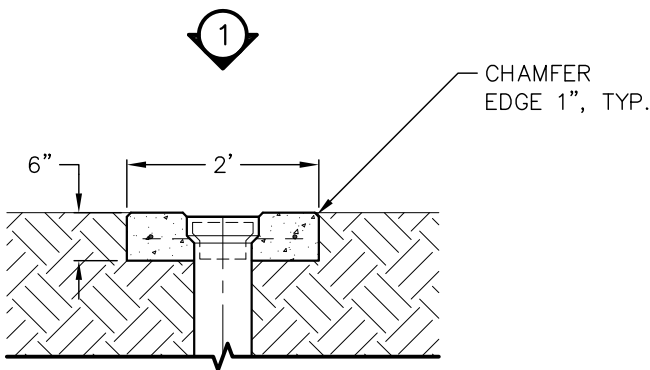
MAY 13, 2014



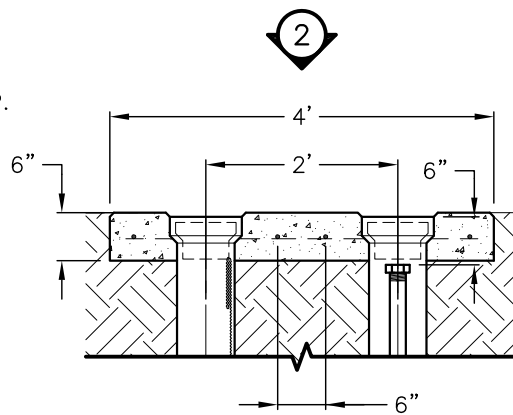
1 CONCRETE COLLAR SINGLE (PLAN)
 1"=2'



2 CONCRETE COLLAR DOUBLE (PLAN)
 1"=2'



3 CONCRETE COLLAR SINGLE (SECTION)
 1"=2'



4 CONCRETE COLLAR DOUBLE (SECTION)
 1"=2'



WOODMOOR
 WATER & SANITATION DISTRICT NO. 1

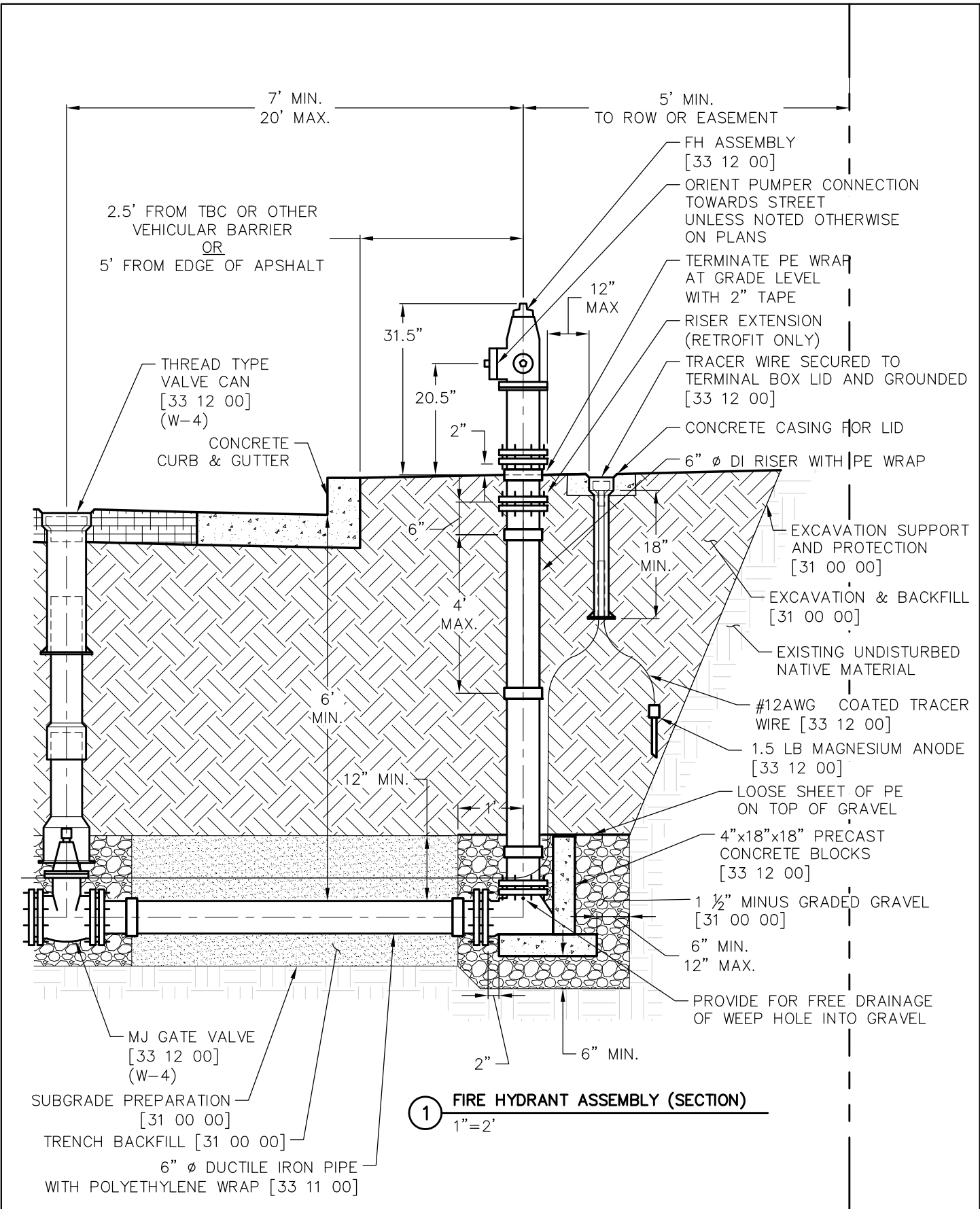
VALVE CANS IN UNPAVED AREAS
 WATER UTILITY DISTRIBUTION EQUIPMENT


THIS CONSTRUCTION DETAIL SHOWS GENERAL CONFORMANCE TO SYSTEM SPECIFICATIONS AND MAY NEED TO BE ADJUSTED FOR SPECIFIC APPLICATIONS.

W-6

33 12 00

MAY 13, 2014



 <p>WOODMOOR WATER & SANITATION DISTRICT NO. 1</p>	<p>FIRE HYDRANT ASSEMBLY</p>	<p>W-8</p>
	<p>WATER UTILITY DISTRIBUTION EQUIPMENT</p>	<p>33 12 00</p>
	<p><small>THIS CONSTRUCTION DETAIL SHOWS GENERAL CONFORMANCE TO SYSTEM SPECIFICATIONS AND MAY NEED TO BE ADJUSTED FOR SPECIFIC APPLICATIONS.</small></p>	<p><small>APRIL 10, 2020</small></p>