

NRG 300 SERIES

PERIMETER WALL PACK

FEATURES

- New higher output plus increased lumens per watt
- 4000K and 5000K high CRI LEDs provide optimal color recognition
- 1,800+ lumens at 10+ LPW
- Universal voltage 120-277V (including photocontrol)
- Non-cutoff reflector fills surrounding area with safety/security illumination
- 1/2 bottom knockout for surface conduit wiring
- Rigid cast aluminum back housing
- One-piece polycarbonate front
- Tamper proof hardware included

SPECIFICATIONS

CONSTRUCTION

- Full polycarbonate front provides vandal resistance and efficient spread of forward and lateral light coverage
- Internally painted bronze finish for cast rig appearance
- LED unit is an excellent upgrade from HID systems retaining a 17x LED system with a 1700+ lumen output, 4000K or 5000K CCT, 80 CRI, 60,500 hr. rated life at L54
- Rugged cast aluminum back housing for rigid mounting. Built-in 1/2" conduit knockout for surface conduit wiring. Back hub allows access to recessed wiring boxes, two point mounting. Additional center-pin torx screws provided for tamper-resistant applications

OPTICS

- Single driver 50/60 Hz, 120-277V
- NRG-300, 1,858/1704 lumens, 4000K/5000K, 12/10 LPW, CRI 80, 1 driver at 100mA
- PC version 120V-277V

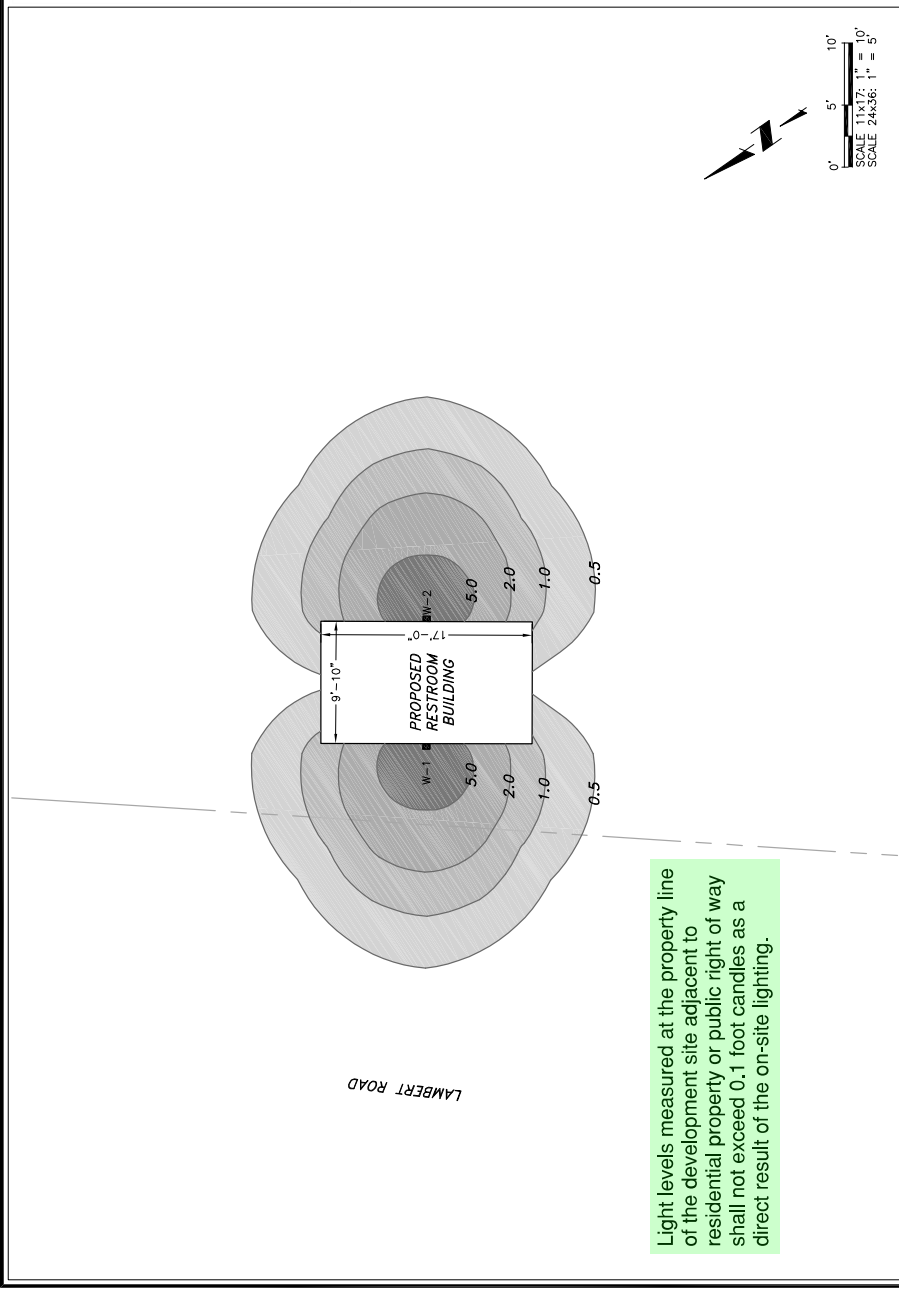
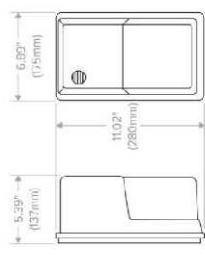
CERTIFICATIONS

- Listed to UL 1598 for use in wet locations

WARRANTY

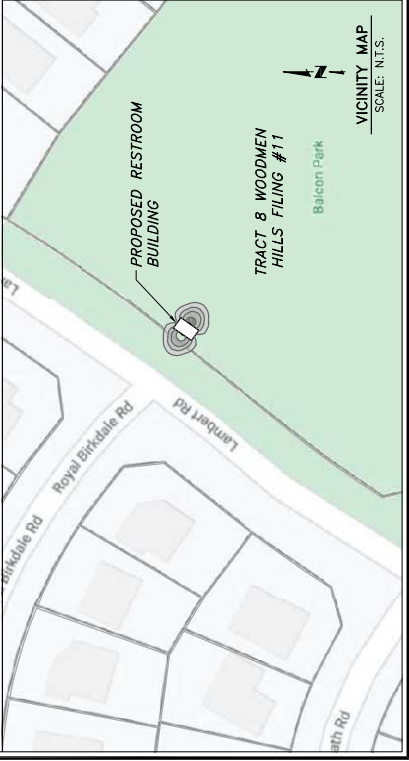
- 5 Year warranty
- See -LL Standard Warranty for additional information

DIMENSIONS



Light levels measured at the property line of the development site adjacent to residential property or public right of way shall not exceed 0.1 foot candles as a direct result of the on-site lighting.

KEY DATA	
Lumen Range	1794-1858
Wattage	16.6
Efficacy Range (LPW)	110-112
Fixture Protection Life (Hours)	170,000
Weight lbs. (kg)	6 lbs. (2.7kg)



SYMBOL	LABEL	QUANTITY	MANUFACTURER	LAMP	NUMBER LAMPS	LUMENS PER LAMP	LIGHT LOSS FACTOR	CATALOG NUMBER	WATTAGE	VOLTAGE	MAX INPUT AMPS	COLOR	WEIGHT LBS. (KG)
■	W	2	HUBBELL	LED	1	1,858	1.00	NRG-356L-4K-U-PC	16.6W	120-277V	.15	DARK BRONZE MATTE TEXTURED	6 (2.7)

DESIGNER: JDS-HYDRO CONSULTANTS, INC.
 5540 TECH CENTER DR., SUITE 100
 COLORADO SPRINGS, COLORADO 80919
 (719) 227-0072

WOODMEN HILLS METROPOLITAN DISTRICT
 BALCON PARK RESTROOM
 PHOTOMETRIC PLAN

NO.	DESCRIPTION	BY	APP.	DATE
1				
2				
3				
4				
5				
6				
7				

PRELIMINARY

Add PCD File #

Project No.: 112.125
 Date: 12/02/21
 Design: RMM
 Drawn: SGC
 Check: RMM

SHEET 1 OF 1