

October 31, 2024

Ms. Elizabeth Nijkamp (Deputy County Engineer)
Mr. Gilbert Laforce (Engineering Manager)
Department of Public Works
2880 International Circle
Colorado Springs, CO 80910

Subject: Trails at Aspen Ridge Filing 1
Roadway Repair Recommendations
Colorado Springs, Colorado
Project No. 22.141

Dear Ms. Nijkamp and Mr. LaForce:

During a meeting on October 16, 2024 between representatives of El Paso County Department of Public Works, Colorado Land Acquisition (COLA), and CMT Technical Services - Colorado (CMT), proposed repairs to areas of utility trench settlement within the roadways of the subject development were discussed. CMT was requested to provide a summary of the proposed repairs. The purpose of this letter is to summarize CMT's recommendations.

CMT performed observations in November 2022 and August 2024 to observe and document existing distress. CMT's observations are summarized in Tables 1 and 2 and Figures A1.0 through A1.7, appended.

CMT observed that the number of distress locations increased, the severity of previously existing distresses increased, and distress within the mainline trenches had developed during the time period between CMT's November 2022 and August 2024 observations. CMT initially recommended performing isolated excavations where settlement had occurred within the service lateral trenches. The existing extent of distress does not allow for isolated repairs at laterals for a majority of the roadways in Filing 1. There are isolated sections of roads where the distress is still limited to the laterals and isolated repairs at laterals are still recommended. The locations where isolated excavations are recommended include:

- Big Johnson Drive.
- Falling Rock Drive.
- Eastern cul-de-sac of Buffalo Horn Drive.
- Storm Castle Court.
- Wagon Hammer Drive between addresses 5402 and 5426.

At all other locations, CMT recommends that the partial depth repairs be performed for the entire width of the street and extend to the back of the sidewalk at lateral locations. A plan view of the extent of the repair areas and a detail of the proposed repairs trench repairs are attached.

CMT understands that Widefield Water and Sanitation District (Widefield) has identified areas where repairs are required to the sanitary mainline and laterals. In order to perform the repairs required by Widefield, full depth removal and replacement of the utility trench backfill will be necessary. At the

locations where full depth replacement of the utility trench backfill is performed, the final subgrade and pavement sections should comply with the approved Entech Engineering, Inc. non-CTS pavement design alternate.

LIMITATIONS

The opinions expressed in this letter represent professional judgments that were prepared based on CMT’s site evaluations, visits, and information made available to it. If new information becomes available, CMT should be contacted and retained to review the new information. CMT reserves the right to modify any conclusions and recommendations deemed appropriate upon discovery and review of new or additional information.

Please contact CMT with any comments or questions regarding this information.

Sincerely,
CMT TECHNICAL SERVICES - COLORADO



Aaron D. Bagley, P.E.
Senior Consultant

ADB/ksm

Attachments

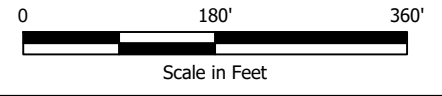
C:\Users\mreed\CMT Technical Services\Colorado Forensic - Ekernal Sharpoint - CMT Project Files\22.141.F Trails at Aspen Ridge Settlement Evaluation\ACAD\22.141 Updated Pavement Distress ID Map.dwg 9/9/2024 8:29 AM

CMT LEGEND:

REPAIRS AT INDIVIDUAL DISTRESS LOCATIONS

FULL ROADWAY REPAIR

SEE FIGURES A1.0 THROUGH A1.7 FOR DISTRESS LOCATIONS



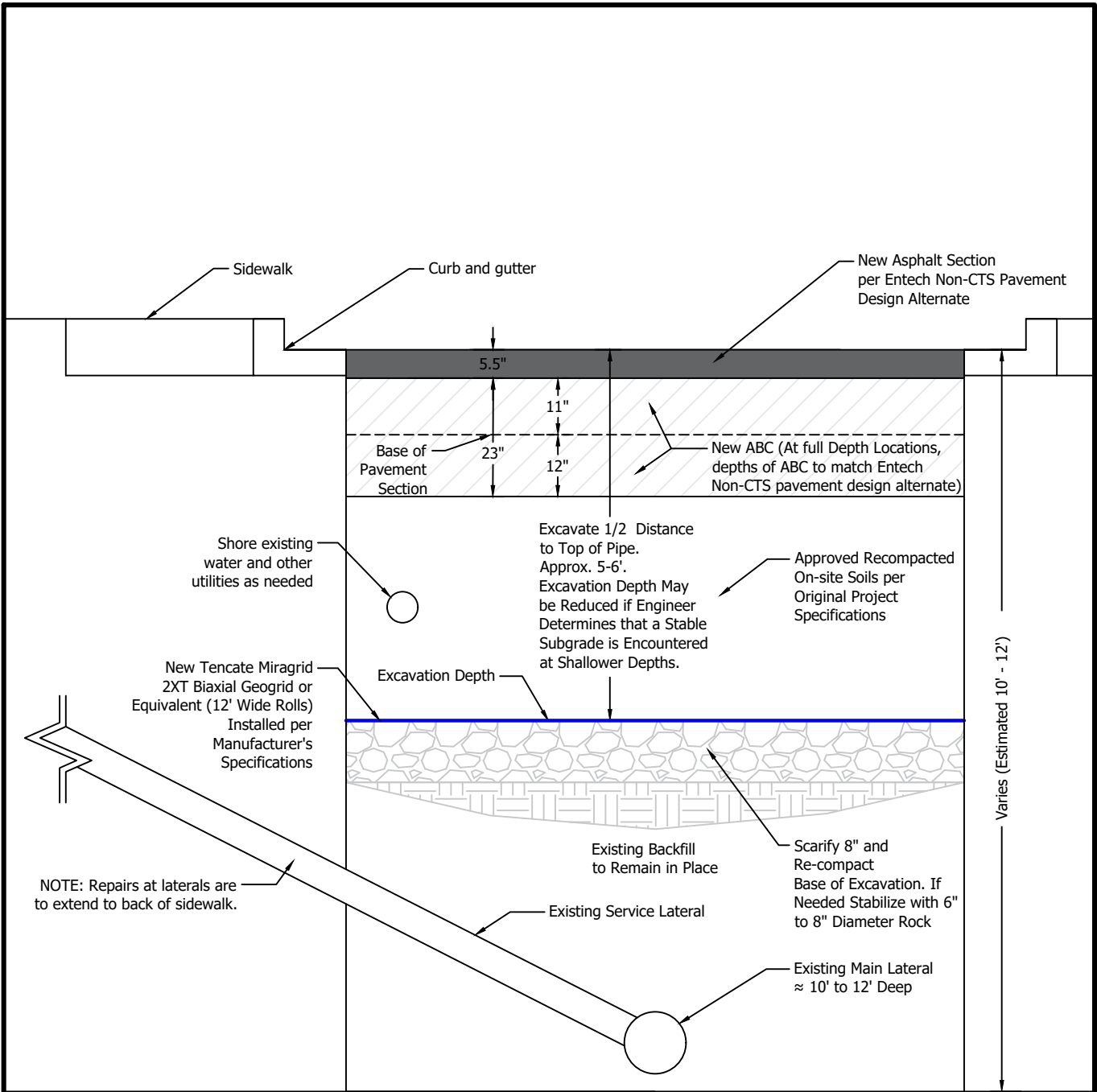
BACKGROUND IMAGE FROM NEARMAP, DATED APRIL 17, 2024.



REPAIR RECOMMENDATIONS

PROJECT NO:	22.141
PROJECT NAME:	Trails at Aspen Ridge Settlement Evaluation
DRAWN BY:	MSR
DWG DATE:	09.09.24
CHECKED BY:	ADB
REV. DATE:	--

A2.0



NOTE: Repairs at laterals are to extend to back of sidewalk.

ABC = Aggregate Base Course

Not to Scale

Whole Width Roadway
Partial Depth Repair Detail

PROJECT NO:	22.141		
PROJECT NAME:	Trails at Aspen Ridge Settlement Evaluation		
DRAWN BY:	MSR	CHECKED BY:	ADB
DWG DATE:	09.13.24	REV. DATE:	10.30.24



TABLE 1
Asphalt Distress Comparison Table
Trails at Aspen Ridge
Project No. 22.141

CMT Distress ID	Address or Closest Intersection	Table B-1 CMT Report May 23, 2023					August 2024					Settlement of sidewalk/ curb and gutter (Y/N)	Photograph Numbers		
		Distress Type	Severity	Dimensions		Area (SF)	Photograph Numbers	New Repair (Y/N)	Distress Type	Depth of Depression(s) (in)	Severity			Approximate Dimensions	
				Length x Width (ft)										Length x Width (ft)	Area (SF)
54	7949 Buffalo Horn Drive	Patching	Low	4.5 x 4.5	20	DIST_54-1*	N	Patch Depressions	- 3, 1-3/4; 2-7/8 (string line)	Low Medium to High	50.0 x 22.0	1100	N	DIST_54-5 through DIST_54-12	
55	7937 Buffalo Horn Drive	Depression	Low	8.0 x 4.0	32	DIST_55-1 and DIST_55-2	N	Depression	7-1/16 (string line)	High	25.0 x 22.0	550	Y	DIST_55-3 through DIST_55-8	
56	7913 Buffalo Horn Drive	Depression	Low	8.0 x 5.0	40	DIST_56-1	N	Depression	4 (string line)	High	30.0 x 10.0	300	Y	DIST_56-2 through DIST_56-6	
57	Sidewinder Drive and Buffalo Horn Drive	Patching	Medium	2.0 x 3.0	6	DIST_57-1	Y	Patch Depression	- 2-5/8	High High	25.0 x 20.0	500	N	DIST_57-2 through DIST_57-7	
58	7889 Buffalo Horn Drive	Patching	Medium	12.0 x 10.0	120	DIST_58-1 through DIST_58-3	Y	Patch Depression	- 3-3/4 (string line)	High High	34.0 x 22.0	748	Y	DIST_58-4 through DIST_58-9	
59	7877 Buffalo Horn Drive	Depression	Medium	18.0 x 10.0	180	DIST_59-1 and DIST_59-2	Y	Patch Depression	- 3-9/16 (string line)	High High	35.0 x 22.0	770	N	DIST_59-3 through DIST_59-9	
60	7865 Buffalo Horn Drive	Depression	Low	8.0 x 10.0	80	DIST_60-1 and DIST_60-2	Y	Patch Depression	- 3-1/2 (string line)	High High	30.0 x 25.0	750	Y	DIST_60-3 through DIST_60-8	
61	7853 Buffalo Horn Drive	Patching	Low	23.0 x 12.0	276	DIST_61-1 and DIST_61-2	N	Patch Depression	- 4-3/8 (string line)	Low High	32.0 x 22.0	704	N	DIST_61-3 through DIST_61-8	
62	7841 Buffalo Horn Drive	Patching	Low	1.5 x 2.0	3	DIST_62-1	Y	Patch Depression	- 4-7/8 (string line)	Low High	32.0 x 20.0	640	Y	DIST_62-2 through DIST_62-10	
63	7829 Buffalo Horn Drive	Depression	Low	12.0 x 4.0	48	DIST_63-1 and DIST_63-2	Y	Patch Depression	- 2-3/4 (string line)	Low High	29.0 x 20.0	580	Y	DIST_63-3 through DIST_63-9	
64	7805 Buffalo Horn Drive	Patching	Medium	60.0 x 40.0	2400	DIST_64-1 through DIST_64-6	N	Patch	-	Medium	60.0 x 40.0	2400		DIST_64-7 through DIST_64-10	
65	5492 Lazy Ridge Drive	Depression	Low	8.0 x 7.0	56	DIST_65-1	Y	Depressions propagated across road (combined)	5-1/8 (string line)	High	40.0 x 30.0	1200	N	DIST_65-2 through DIST_65-10	
66	5493 Lazy Ridge Drive	Depression	Medium	12.0 x 6.0	72	DIST_66-1 and DIST_66-2									
67	5490 Wagon Hammer Drive	Patching	Low	5.0 x 5.0	25	DIST_67-1 through DIST_67-4	N	Patch	-	Low	5.0 x 5.0	25	N	DIST_67-5 and DIST_67-6	
68	5482 Wagon Hammer Drive	Patching	Medium	12.0 x 12.0	144	DIST_68-1 through DIST_68-4	N	Patch Depression	- 1-13/16	Medium Medium	15.0 x 12.0	180	Y	DIST_68-11 through DIST_68-17	
69	5474 Wagon Hammer Drive	Depression	Low	6.0 x 6.0	36	DIST_69-1 through DIST_69-4	N	Depression	1-5/8 (string line)	Medium	23.0 x 12.0	276	Y	DIST_69-10 through DIST_69-15	
70	5466 Wagon Hammer Drive	Depression	Low	7.0 x 4.0	28	DIST_70-1 through DIST_70-4	N	Depression	3/8	Low	10.0 x 8.0	80	N	DIST_70-8 through DIST_70-12	
71	5450 Wagon Hammer Drive	Depression	Low	6.0 x 4.0	24	DIST_71-1 through DIST_71-5	N	Depression	7/16	Low	8.0 x 6.0	48	N	DIST_71-6 through DIST_71-10	
72	5442 Wagon Hammer Drive	Depression	Low	7.0 x 4.0	28	DIST_72-1 through DIST_72-4	N	Depression	1-1/4 (string line)	Medium	25.0 x 15.0	375	N	DIST_72-5 through DIST_72-10	
73	5434 Wagon Hammer Drive	Depression	Low	5.0 x 5.0	25	DIST_73-1 through DIST_73-4	N	Depression	2	High	11.0 x 16.0	176	Y	DIST_73-14 through DIST_73-19	
74	5426 Wagon Hammer Drive	Depression	Low	7.0 x 4.0	28	DIST_74-1 through DIST_74-4	N	Depression	7/16	Low	7.0 x 4.0	28	N	DIST_74-5 through DIST_74-8	
75	5418 Wagon Hammer Drive	Depression	Low	7.0 x 5.0	35	DIST_75-1 through DIST_75-4	N	Depression	3/8	Low	7.0 x 5.0	35	N	DIST_75-5 through DIST_75-8	
76	5410 Wagon Hammer Drive	Depression	Low	8.0 x 5.0	40	DIST_76-1 through DIST_76-4	N	Depression	1/4	Low	8.0 x 5.0	40	N	DIST_76-5 through DIST_76-8	
77	5402 Wagon Hammer Drive	Depression	Low	8.0 x 6.0	48	DIST_77-1 through DIST_77-7	N	Depression	13/16	Low	10.0 x 6.0	60	N	DIST_77-8 through DIST_77-11	
78	5378 Wagon Hammer Drive	Patching	Low	18.0 x 6.2	111	DIST_78-1 through DIST_78-3	N	Patch Depression	- 7/8; 2-11/16 (stringline)	Low High	29.0 x 15.0	435	N	DIST_78-4 through DIST_78-11	
79	5370 Wagon Hammer Drive	Depression	Low	9.0 x 5.0	45	DIST_79-1 through DIST_79-5	N	Depression	2-1/2 (stringline)	High	30.0 x 15.0	450	N	DIST_79-6 through DIST_79-14	
80	5362 Wagon Hammer Drive	Depression	Low	12.0 x 7.0	84	DIST_80-1 through DIST_80-5	N	Depression	1-5/8 (stringline)	Medium	26.5 x 15.0	398	Y	DIST_80-11 through DIST_80-17	
81	5354 Wagon Hammer Drive	Patching	Low	8.0 x 3.3	27	DIST_81-1 through DIST_81-7	N	Patch Depression	- 2-1/16	High High	16.0 x 15.0	240	Y	DIST_81-12 through DIST_81-17	
82	5346 Wagon Hammer Drive	Depression	Medium	11.0 x 5.0	55	DIST_82-1 through DIST_82-5	Y	Patch Depression	- 13/16	Low Low	18.0 x 14.0	252	N	DIST_82-15 through DIST_82-19	
83	5338 Wagon Hammer Drive	Patching	High	24.0 x 18.0	432	DIST_83-1 through DIST_83-14	N	Patch Depression	- 1	High Low	24.0 x 18.0	432	N	DIST_83-15 through DIST_83-19	
84	5315 Wagon Hammer Drive	Depression	Low	10.0 x 6.5	65	DIST_84-1 and DIST_84-5	Y	Patch	-	Low	10.0 x 6.5	65	N	DIST_84-6 through DIST_84-9	
85	5339 Wagon Hammer Drive	Patching	Low	28.5 x 11.5	328	DIST_85-1 through DIST_85-3	N	Patch	-	Low	28.5 x 11.5	328	N	DIST_85-4 through DIST_85-7	
86	5347 Wagon Hammer Drive	Patching	Low	21.0 x 6.5	137	DIST_86-1 through DIST_86-6	N	Patch Depression	- 4-1/2 (stringline)	High High	27.0 x 15.0	405	N	DIST_86-7 through DIST_86-11	
87	5355 Wagon Hammer Drive	Patching	Low	10.0 x 7.0	70	DIST_87-1	Y	Patch Active Repair	- -	-	25.0 x 15.0	375	N	DIST_87-2 through DIST_87-5	
88	5363 Wagon Hammer Drive	Patching	Low	8.0 x 5.0	40	DIST_88-1 and DIST_88-4	N	Patch Depression	- 2 (stringline)	Low High	25.0 x 15.0	375	Y	DIST_88-5 through DIST_88-12	
89	5371 Wagon Hammer Drive	Patching	Low	18.0 x 8.5	153	DIST_89-1 through DIST_89-8	N	Patch Depression	- 15/16	Low Low	18.0 x 8.5	153	N	DIST_89-11 through DIST_89-15	
90	5387 Wagon Hammer Drive	Patching	Low	8.0 x 7.0	56	DIST_90-1 through DIST_90-5	N	Patch	3-3/4 (stringline)	High	26.0 x 15.0	390	Y	DIST_90-12 through DIST_90-20	
91	5395 Wagon Hammer Drive	Depression	Low	10.5 x 4.5	47	DIST_91-1 through DIST_91-6	N	Depression	1-3/4 (stringline)	Medium	22.0 x 15.0	330	Y	DIST_91-9 through DIST_91-16	
92	5403 Wagon Hammer Drive	Patching	Low	6.5 x 7.5	49	DIST_92-1 through DIST_92-7	N	Patch Depression	- 1-7/16 (stringline)	Medium Medium	22.0 x 15.0	330	Y	DIST_92-13 through DIST_92-18	
93	5411 Wagon Hammer Drive	Patching	Medium	6.5 x 6.0	39	DIST_93-1 through DIST_93-5	N	Patch Depression	- 2	Medium Medium	10.0 x 11.0	110	Y	DIST_93-8 through DIST_93-11	
94	5419 Wagon Hammer Drive	Patching	Low	12.5 x 9.0	113	DIST_94-1 and DIST_94-2	N	Patch	-	Low	12.5 x 9.0	113	Y	DIST_94-3 through DIST_94-6	
95	5427 Wagon Hammer Drive	Depression	High	13.0 x 14.5	189	DIST_95-1 through DIST_95-7	N	Depression	3-1/8 (stringline)	High	20.0 x 15.0	300	Y	DIST_95-16 through DIST_95-23	
96	5435 Wagon Hammer Drive	Patching	Low	9.0 x 6.5	59	DIST_96-1 through DIST_96-3	Y	Patches Depression	- 2-3/16 (stringline)	Medium to Low High	18.0 x 15.0	270	Y	DIST_96-13 through DIST_96-20	
97	5443 Wagon Hammer Drive	Depression	Low	10.0 x 5.0	50	DIST_97-1 through DIST_97-5	N	Depression	1-7/8 (stringline)	Medium	21.0 x 15.0	315		DIST_97-6 through DIST_97-10	
98	5451 Wagon Hammer Drive	Depression	Medium	11.0 x 13.0	143	DIST_98-1 and DIST_98-5	Y	Patch Depression	- 2-1/2 (stringline)	Medium High	20.0 x 12.0	240	N	DIST_98-6 through DIST_98-11	
99	5467 Wagon Hammer Drive	Patching	Low	20.0 x 6.5	130	DIST_99-1 through DIST_99-7	N	Patch Depression	- 2-7/16 (stringline)	Medium High	20.0 x 10.0	200	Y	DIST_99-12 through DIST_99-16	

* Revised
1 Location of Ninyo and Moore Distress ID N9
2 Location of Ninyo and Moore Distress ID N10
3 Location of Ninyo and Moore Distress ID N12

TABLE 1
Asphalt Distress Comparison Table
Trails at Aspen Ridge
Project No. 22.141

CMT Distress ID	Address or Closest Intersection	Table B-1 CMT Report May 23, 2023					August 2024								
		Distress Type	Severity	Dimensions		Area (SF)	Photograph Numbers	New Repair (Y/N)	Distress Type	Depth of Depression(s) (in)	Severity	Approximate Dimensions		Settlement of sidewalk/curb and gutter (Y/N)	Photograph Numbers
				Length x Width (ft)	Area (SF)							Length x Width (ft)	Area (SF)		
100	5475 Wagon Hammer Drive	Patching	Medium	12.0 x 8.5	102	DIST_100-1 through DIST_100-4	Y	Patches Depression	- 3-7/16 (stringline)	Medium High	21.0 x 17.0	357	Y	DIST_100-10 through DIST_100-14	
101	5483 Wagon Hammer Drive	Depression	Medium	9.0 x 6.5	59	DIST_101-1 through DIST_101-5	N	Depression	3-1/2	High	12.0 x 15.0	180	Y	DIST_101-12 through DIST_101-18	
102	5491 Wagon Hammer Drive	Depression	Low	6.0 x 5.0	30	DIST_102-1 through DIST_102-5	N	Depression	1/2	Low	8.0 x 5.0	40	N	DIST_102-6 through DIST_102-10	
103	5379 Wagon Hammer Drive	Depression	Low	15 x 12	180	DIST_103-4 through DIST_103-7	N	Depression	3-9/16 (stringline)	High	26.0 x 15.0	390	N	DIST_103-18 through DIST_103-22	
104	8225 Buffalo Horn Drive	Depression	Low	10 x 8	80	DIST_104-1 through DIST_104-5	N	Depression	2-1/16	High	12.0 x 15.0	180	N	DIST_104-6 through DIST_104-9	
105	8249 Falling Rock Drive			Not applicable			N	Depression	11/16 (string line)	Low	8.0 x 20.0	160	N	DIST_105-1 through DIST_105-5	
106	8232 Falling Rock Drive			Not applicable			N	Depression	1-1/2 (string line)	Medium	12.0 x 22.0	264	N	DIST_106-1 through DIST_106-5	
107	8216 Falling Rock Drive			Not applicable			N	Depression	2-1/16 (string line)	High	12.0 x 27.0	324	N	DIST_107-1 through DIST_107-6	
108	5328 Sunday Gulch Drive			Not applicable			N	Depression	2-1/16 (string line)	High	50.0 x 30.0	1500	Y	DIST_108-1 through DIST_108-7	
109	5336 Sunday Gulch Drive			Not applicable			N	Depression	1-5/16 (string line)	Medium	35.0 x 30.0	1050	N	DIST_109-1 through DIST_109-5	
110	5344 Sunday Gulch Drive			Not applicable			N	Depression	2-11/16 (string line)	High	44.0 x 18.0	792	Y	DIST_110-1 through DIST_110-8	
111	5359 Sunday Gulch Drive			Not applicable			N	Depression	1-1/4 (string line)	Medium	30.0 x 21.0	630	N	DIST_111-1 through DIST_111-6	
112	5367 Sunday Gulch Drive			Not applicable			N	Depression	1-7/16 (string line)	Medium	30.0 x 20.0	600	N	DIST_112-1 through DIST_112-5	
113	5376 Sunday Gulch Drive			Not applicable			N	Depression	1-1/8	Medium	8.0 x 12.0	96	N	DIST_113-1 through DIST_113-5	
114	5376 Sunday Gulch Drive			Not applicable			N	Depression	2-1/2 (string line)	High	26.0 x 20.0	520	Y	DIST_114-1 through DIST_114-5	
115	8163 Lookout Court			Not applicable			N	Depression	4-5/8 (string line)	High	34.0 x 19.0	646	N	DIST_115-1 through DIST_115-5	
116	8136 Lookout Court			Not applicable			N	Depressions	13/16, 1-1/8	Low and Medium	33.0 x 20.0	660	N	DIST_116-1 through DIST_116-7	
117	8149 Lookout Court			Not applicable			N	Depression	1-1/16 (string line)	Medium	20.0 x 22.0	440	N	DIST_117-1 through DIST_117-5	
118	5407 Sunday Gulch Drive			Not applicable			N	Depression	3-3/8 (string line)	High	36.0 x 22.0	792	N	DIST_118-1 through DIST_118-7	
119	5415 Sunday Gulch Drive			Not applicable			N	Depression	2-11/16	High	18.0 x 30.0	540	N	DIST_119-1 through DIST_119-7	
120	5423 Sunday Gulch Drive			Not applicable			N	Depression	7; 9-15/16 (stringline)	High	27.0 x 22.0	594	Y	DIST_120-1 through DIST_120-12	
121	5440 Sunday Gulch Drive			Not applicable			Y	Patches Depression	- 3-1/16	High High	26.0 x 30.0	780	Y	DIST_121-1 through DIST_121-8	
122	5439 Sunday Gulch Drive			Not applicable			N	Depression	3-15/16	High	20.0 x 15.0	300	Y	DIST_122-1 through DIST_122-9	
123	5447 Sunday Gulch Drive			Not applicable			N	Depressions	3-7/16, 1-1/2 (string line)	Medium and High	14.0 x 10.0 50.0 x 12.0	740	N	DIST_123-1 through DIST_123-8	
124	5455 Sunday Gulch Drive			Not applicable			Y	Patch Depression	- 6-1/16 (string line)	High High	50.0 x 30.0	1500	Y	DIST_124-1 through DIST_124-8	
125	5463 Sunday Gulch Drive			Not applicable			N	Depression	1-5/8	Medium	12.0 x 6.0	72	N	DIST_125-1 through DIST_125-5	
126	5472 Sunday Gulch Drive			Not applicable			N	Depression	3-7/16	High	25.0 x 12.0	300	N	DIST_126-1 through DIST_126-6	
127	8249 Buffalo Horn Drive			Not applicable			N	Depression	7/8	Low	10.0 x 10.0	100	N	DIST_127-1 through DIST_127-4	
128	8273 Buffalo Horn Drive			Not applicable			N	Depression	1-15/16	Medium	19.0 x 14.0	266	N	DIST_128-1 through DIST_128-4	
129	8250 Buffalo Horn Drive			Not applicable			N	Depression	3-15/16 (string line)	High	15.0 x 24.0	360	Y	DIST_129-1 through DIST_129-5	
130	8237 Buffalo Horn Drive			Not applicable			N	Depression	1-1/4	Medium	12.0 x 8.0	96	N	DIST_130-1 through DIST_130-4	
131	8238 Buffalo Horn Drive			Not applicable			N	Depression	2 (string line)	Medium	30.0 x 26.0	780	Y	DIST_131-1 through DIST_131-11	
132	8153 Buffalo Horn Drive			Not applicable			Y	Patches Depressions	- 2-3/8, 2-3/8	Low High	30.0 x 20.0	600	N	DIST_132-1 through DIST_132-9	
133	5472 Windy Pass Court			Not applicable			Y	Depression	3 (string line)	High	19.0 x 15.0	285	Y	DIST_133-1 through DIST_133-5	
134	5430 Windy Pass Court			Not applicable			N	Depressions	1-1/4, 3-5/16, 2	Medium to High	50.0 x 30.0	1500	N	DIST_134-1 through DIST_134-9	
135	5416 Windy Pass Court			Not applicable			N	Depression	1-3/16	Medium	16.0 x 10.0	160	Y	DIST_135-1 through DIST_135-3	
136	5417 Windy Pass Court			Not applicable			N	Depression	1-9/16	Medium	28.0 x 12.0	336	N	DIST_136-1 through DIST_136-4	
137	8141 Buffalo Horn Drive			Not applicable			N	Depression	2-1/16	High	15.0 x 22.0	330	Y	DIST_137-1 through DIST_137-10	
138	5474 Storm Castle Court			Not applicable			N	Depression	1-3/4 (string line)	Medium	20.0 x 12.0	240	Y	DIST_138-1 through DIST_138-9	
139	5446 Storm Castle Court			Not applicable			N	Depression	1-11/16 (string line)	Medium	22.0 x 12.0	264	Y	DIST_139-1 through DIST_139-4	
140	5418 Storm Castle Court			Not applicable			N	Depression	2-5/8 (string line)	High	17.0 x 15.0	255	Y	DIST_140-1 through DIST_140-6	
141	5419 Storm Castle Court			Not applicable			N	Depression	13/16	Low	4.0 x 10.0	40	N	DIST_141-1 through DIST_141-9	
142	8069 Buffalo Horn Drive			Not applicable			N	Depression	1-5/8 (string line)	Medium	18.0 x 11.0	198	Y	DIST_142-1 through DIST_142-8	
143 ¹	8045 Buffalo Horn Drive			Not applicable			N	Depression	3-1/4 (string line)	High	23.0 x 12.0	276	Y	DIST_143-1 through DIST_143-6	
144	8033 Buffalo Horn Drive			Not applicable			N	Depression	2-1/16	High	18.0 x 12.0	216	N	DIST_144-1 through DIST_144-4	
145	7973 Buffalo Horn Drive			Not applicable			N	Depression	3-1/4 (string line)	High	32.0 x 22.0	704	Y	DIST_145-1 through DIST_145-5	
146 ²	7925 Buffalo Horn Drive			Not applicable			N	Depression	6-1/8 (string line)	High	15.0 x 42.0	630	Y	DIST_146-1 through DIST_146-5	
147	7925 Buffalo Horn Drive			Not applicable			N	Depression	5-9/16	High	25.0 x 13.0	325	N	DIST_147-1 through DIST_147-5	
148	7925 Buffalo Horn Drive			Not applicable			Y	Patch	-	Low	5.0 x 5.5	28	N	DIST_148-1 through DIST_148-2	
149	7901 Buffalo Horn Drive			Not applicable			N	Depression	1-1/4	Medium	38.0 x 10.0	380	Y	DIST_149-1 through DIST_149-4	
150	7805 Buffalo Horn Drive			Not applicable			N	Depression	5-7/8 (string line)	High	25.0 x 20.0	500	Y	DIST_150-1 through DIST_150-6	
151	Intersection of Buffalo Horn Drive and Triple Tree Loop			Not applicable			N	Depression	2-13/16	High	11.0 x 9.0	99	Y	DIST_151-1 through DIST_151-4	
152	5459 Sidewinder Drive			Not applicable			N	Depression	1-9/16 (string line)	Medium	22.0 x 20.0	440	N	DIST_152-1 through DIST_152-5	
153 ³	5459 Sidewinder Drive			Not applicable			Y	Patch Depression	- 2-1/16 (string line)	High High	31.0 x 19.0	589	N	DIST_153-1 through DIST_153-5	
154	5490 Wagon Hammer Drive			Not applicable			N	Depression	2-3/8	High	10.0 x 10.0	100	N	DIST_154-1 through DIST_154-5	
155	5490 Wagon Hammer Drive			Not applicable			Y	Patch Depression	- 2-3/16	Low High	40.0 x 10.0	400	N	DIST_155-1 through DIST_155-5	
156	5450 Wagon Hammer Drive			Not applicable			N	Depression	7/8	Low	10.0 x 15.0	150	N	DIST_156-1 through DIST_156-4	
157	5434 Wagon Hammer Drive			Not applicable			N	Depression	2-13/16	High	38.0 x 10.0	380	N	DIST_157-1 through DIST_157-4	
158	5386 Wagon Hammer Drive			Not applicable			N	Depression	1-1/8, 1-3/8	Medium	10.0 x 65.0	650	N	DIST_158-1 through DIST_158-9	
159	5378 Wagon Hammer Drive			Not applicable			N	Depression	11/16	Low	8.0 x 10.0	80	N	DIST_159-1 through DIST_159-4	
160	5362 Wagon Hammer Drive			Not applicable			N	Depression	2-1/16	High	31.0 x 11.0	341	N	DIST_160-1 through DIST_160-5	
161	5354 Wagon Hammer Drive			Not applicable			N	Depression	2-5/8	High	37.0 x 10.0	370	N	DIST_161-1 through DIST_161-5	

* Revised
1 Location of Ninyo and Moore Distress ID N9
2 Location of Ninyo and Moore Distress ID N10
3 Location of Ninyo and Moore Distress ID N12

TABLE 1
Asphalt Distress Comparison Table
Trails at Aspen Ridge
Project No. 22.141

CMT Distress ID	Address or Closest Intersection	Table B-1 CMT Report May 23, 2023					August 2024								
		Distress Type	Severity	Dimensions		Area (SF)	Photograph Numbers	New Repair (Y/N)	Distress Type	Depth of Depression(s) (in)	Severity	Approximate Dimensions		Settlement of sidewalk/curb and gutter (Y/N)	Photograph Numbers
				Length x Width (ft)								Length x Width (ft)	Area (SF)		
162	5338 Wagon Hammer Drive			Not applicable				N	Depression	3-1/4	High	17.0 x 10.0	170	N	DIST_162-1 through DIST_162-6
163	5330 Wagon Hammer Drive			Not applicable				Y	Patch	-	Medium	19.0 x 13.0	247	Y	DIST_163-1 through DIST_163-5
164	5330 Wagon Hammer Drive			Not applicable				N	Depression	1-1/4	Medium	24.0 x 10.0	240	N	DIST_164-1 through DIST_164-4
165	5315 Wagon Hammer Drive			Not applicable				Y	Patch	-	Low	65.0 x 29.0	1885	N	DIST_165-1 through DIST_165-6
166	5315 Wagon Hammer Drive			Not applicable				N	Depression	1-3/16	Medium	22.0 x 8.0	176	N	DIST_166-1 through DIST_166-5
167	5315 Wagon Hammer Drive			Not applicable				Y	Patch	-	Low	27.0 x 30.0	810	N	DIST_167-1 through DIST_167-6
168	5331 Wagon Hammer Drive			Not applicable				N	Depression	1-5/16	Medium	28.0 x 15.0	420	N	DIST_168-1 through DIST_168-6

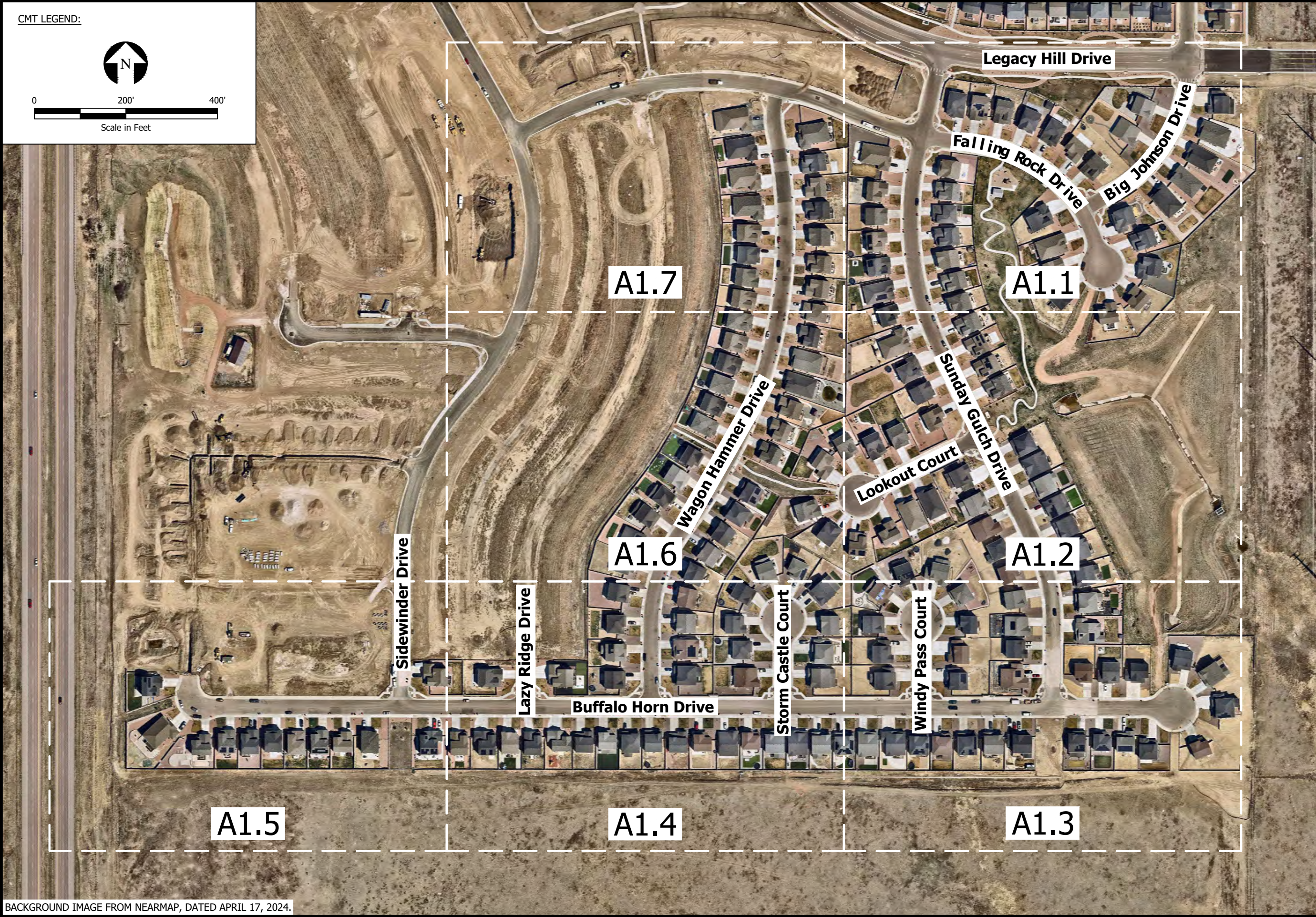
* Revised
1 Location of Ninyo and Moore Distress ID N9
2 Location of Ninyo and Moore Distress ID N10
3 Location of Ninyo and Moore Distress ID N12

TABLE 2
Ninyo Moore Asphalt Distress Comparison Table
Trails at Aspen Ridge
Project No. 22.141

Ninyo & Moore Distress Summary Table March 29, 2024								CMT 2024							
Distress ID	Address/Closest Intersection	Distress Type	Severity	Dimensions	Area (SF)	Notes	Photo Nos.	New Repair (Y/N)	Distress Type	Depth of Depression(s) (in)	Severity	Approximate Dimensions		Settlement of sidewalk/curb and gutter (Y/N)	Photograph Numbers
				L x W (ft)								Length x Width (ft)	Area (SF)		
N1	5456 Sunday Gulch Drive	Depression	Medium	5 x 2	10	2" Depression	150	N	Depression	2-1/2 (string line)	High	24.0 x 12.0	288	Y	DIST_N1-1 through DIST_N1-6
N2	5464 Sunday Gulch Drive	Patch	Low	5 x 15	75	Asphalt Patch with crack seal, slight raveling	151	Y	Patch	-	Low	30.0 x 78.0	2340	N	DIST_N2-1 through DIST_N2-3
N3	8213 Buffalo Horn Drive	Patch	High	20 X 10	200	Asphalt Patch with crack seal, slight raveling, cracks in curb and gutter	152, 153	Y	Patch	-	Low	30.0 x 70.0	2100	N	DIST_N3-1 through DIST_N3-5
N4	5431 Sunday Gulch Drive	Depression	Medium	10 x 10	100	3 1/2 " depression in asphalt , and settlement in sidewalk	154	N	Depressions	6-13/16, 2-15/16 (string line), 1-1/2	High	58.0 x 30.0	1740	Y	DIST_N4-1 through DIST_N4-15
N5	8189 Buffalo Horn Drive	Patch	Low	20 x 27	540	Moderate Raveling, Curb and Gutter replaced	155	Y	Patch Depressions	- 3-13/16 (string line), 3-1/2	Medium High	58.0 x 20.0	1160	N	DIST_N5-1 through DIST_N5-9
N6	8177 Buffalo Horn Drive	Patch	Low	8 x 15	120	Asphalt Patch with crack seal, slight raveling, little additional settlement	156	Y	Patch Depression	- 4-3/4 (string line)	Medium High	45.0 x 20.0	900	Y	DIST_N6-1 through DIST_N6-7
N7	5431 Windy Pass Court	Patch	Low	10 x 15	150	Asphalt Patch with crack seal, slight raveling, little additional settlement	157	Y	Patch Depressions	- 1-3/4, 1/2	Low Low to Medium	38.0 x 22.0	836	N	DIST_N7-1 through DIST_N7-6
N8	8141 Windy Pass Court	Patch	Low	5 x 10	50	Asphalt Patch with crack seal, slight raveling, cracks in curb and gutter	158	Y	Depression	2-5/16 (string line)	High	26.0 x 15.0	390	Y	DIST_N8-1 through DIST_N8-6
N9	8045 Buffalo Horn Drive	Depression	Low	4 x 8	32	1 " depression and cracks in curb and gutter	159	N	Depression	3-1/4 (string line)	High	23.0 x 12.0	276	Y	DIST_N9-1 through DIST_N9-6
N10	7925 Buffalo Horn Drive	Patch	Medium	15 x 20	300	Patch with additional settlement, severe cracking in curb and gutter and settlement in sidewalk	160, 161	N	Depression	6-1/8 (string line)	High	15.0 x 42.0	630	Y	DIST_N10-1 through DIST_N10-5
N11	7901 Buffalo Horn Drive	Depression	Low	4 x 8	32	1 1/2 " depression in asphalt, minor cracks in Curb and Gutter	162	Y	Patch Depression	- 4-7/8 (string line)	Low High	33.0 x 22.0	726	Y	DIST_N11-1 through DIST_N11-7
N12	5459 Sidewinder Drive	Depression	Low	4 x 8	32	2" Depression in asphalt, additional settlement in sidewalk	163	Y	Patch Depression	- 2-1/16 (string line)	Low High	35.5 x 17.0	604	N	DIST_N12-1 through DIST_N12-4 and DIST_153-1 through DIST_153-5

C:\Users\jmeed\CMT_Technical_Services\Colorado_Forensic - External_Sharpshoot - CMT_Project_Files\22.141.F_Trails at Aspen_Ridge_Settlement_Evaluation\ACAD\22.141_Updated_Pavement_Distress_ID_Map.dwg 9/4/2024 4:28 PM

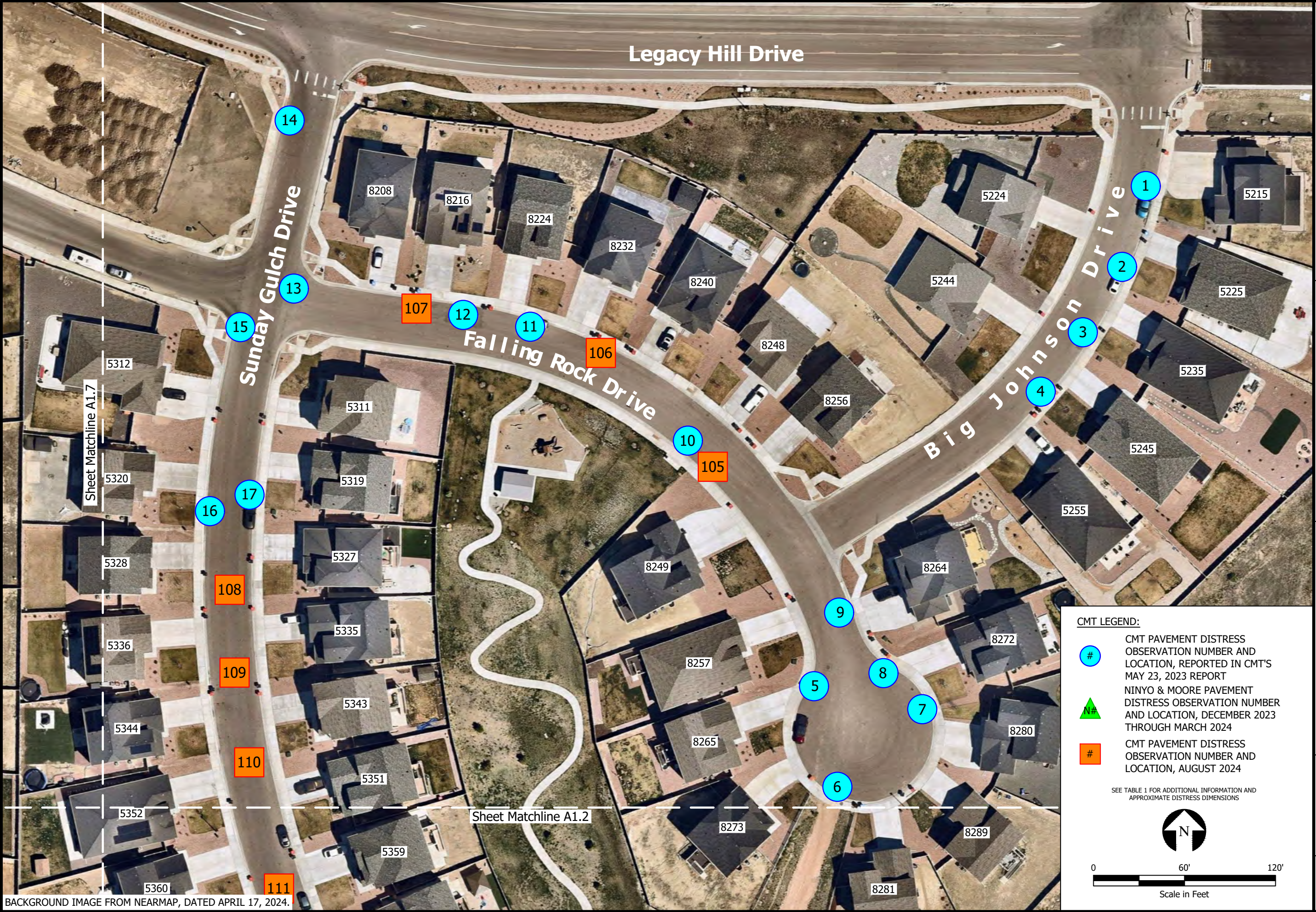
CMT LEGEND:



BACKGROUND IMAGE FROM NEARMAP, DATED APRIL 17, 2024.

A1.0		PROJECT NO:	22.141
		PROJECT NAME:	Trails at Aspen Ridge Settlement Evaluation
ASPHALT DISTRESS LOCATIONS Index		DRAWN BY:	MSR
		CHECKED BY:	--
CMT TECHNICAL S E R V I C E S		DWG DATE:	09.04.24
		REV. DATE:	--

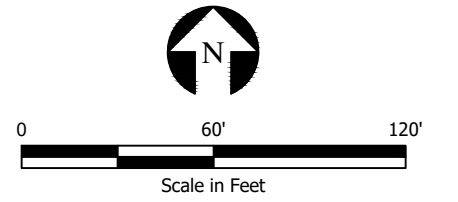
C:\Users\jmeed\CMT_Technical_Services\Colorado_Forensic - External_Sharepoint - CMT_Project_Files\22.141.F_Trails at Aspen_Ridge_Settlement_Evaluation\ACAD\22.141_Updated_Pavement_Distress_ID_Map.dwg 9/4/2024 4:28 PM



CMT LEGEND:

- # CMT PAVEMENT DISTRESS OBSERVATION NUMBER AND LOCATION, REPORTED IN CMT'S MAY 23, 2023 REPORT
- ▲ NINYO & MOORE PAVEMENT DISTRESS OBSERVATION NUMBER AND LOCATION, DECEMBER 2023 THROUGH MARCH 2024
- # CMT PAVEMENT DISTRESS OBSERVATION NUMBER AND LOCATION, AUGUST 2024

SEE TABLE 1 FOR ADDITIONAL INFORMATION AND APPROXIMATE DISTRESS DIMENSIONS



BACKGROUND IMAGE FROM NEARMAP, DATED APRIL 17, 2024.

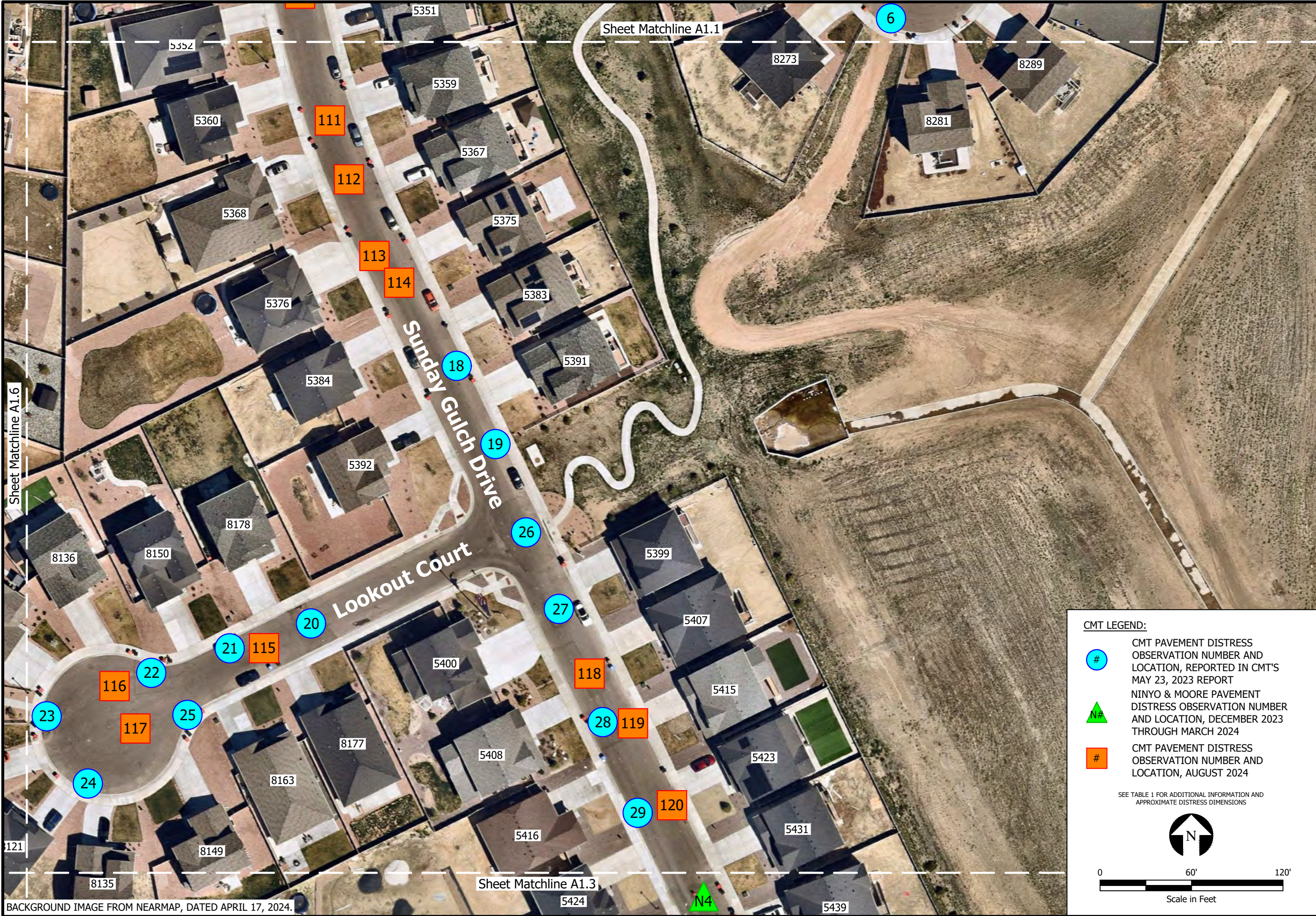


ASPHALT DISTRESS LOCATIONS

PROJECT NO:	22.141	PROJECT NAME:	Trails at Aspen Ridge Settlement Evaluation
DRAWN BY:	MSR	CHECKED BY:	--
DWG DATE:	09.04.24	REV. DATE:	--

A1.1

C:\Users\jmeed\CMT Technical Services\Colorado Forensic - External\Sharepoint - CMT Project Files\22.141.F.Trails at Aspen Ridge Settlement Evaluation\ACAD\22.141.Updated Pavement District ID Map.dwg 9/4/2024 4:28 PM

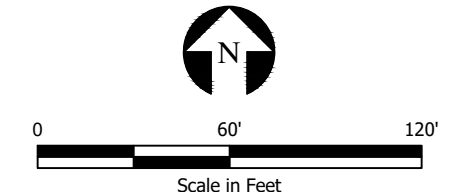


BACKGROUND IMAGE FROM NEARMAP, DATED APRIL 17, 2024.

CMT LEGEND:

- # CMT PAVEMENT DISTRESS OBSERVATION NUMBER AND LOCATION, REPORTED IN CMT'S MAY 23, 2023 REPORT
- ▲ NINYO & MOORE PAVEMENT DISTRESS OBSERVATION NUMBER AND LOCATION, DECEMBER 2023 THROUGH MARCH 2024
- # CMT PAVEMENT DISTRESS OBSERVATION NUMBER AND LOCATION, AUGUST 2024

SEE TABLE 1 FOR ADDITIONAL INFORMATION AND APPROXIMATE DISTRESS DIMENSIONS

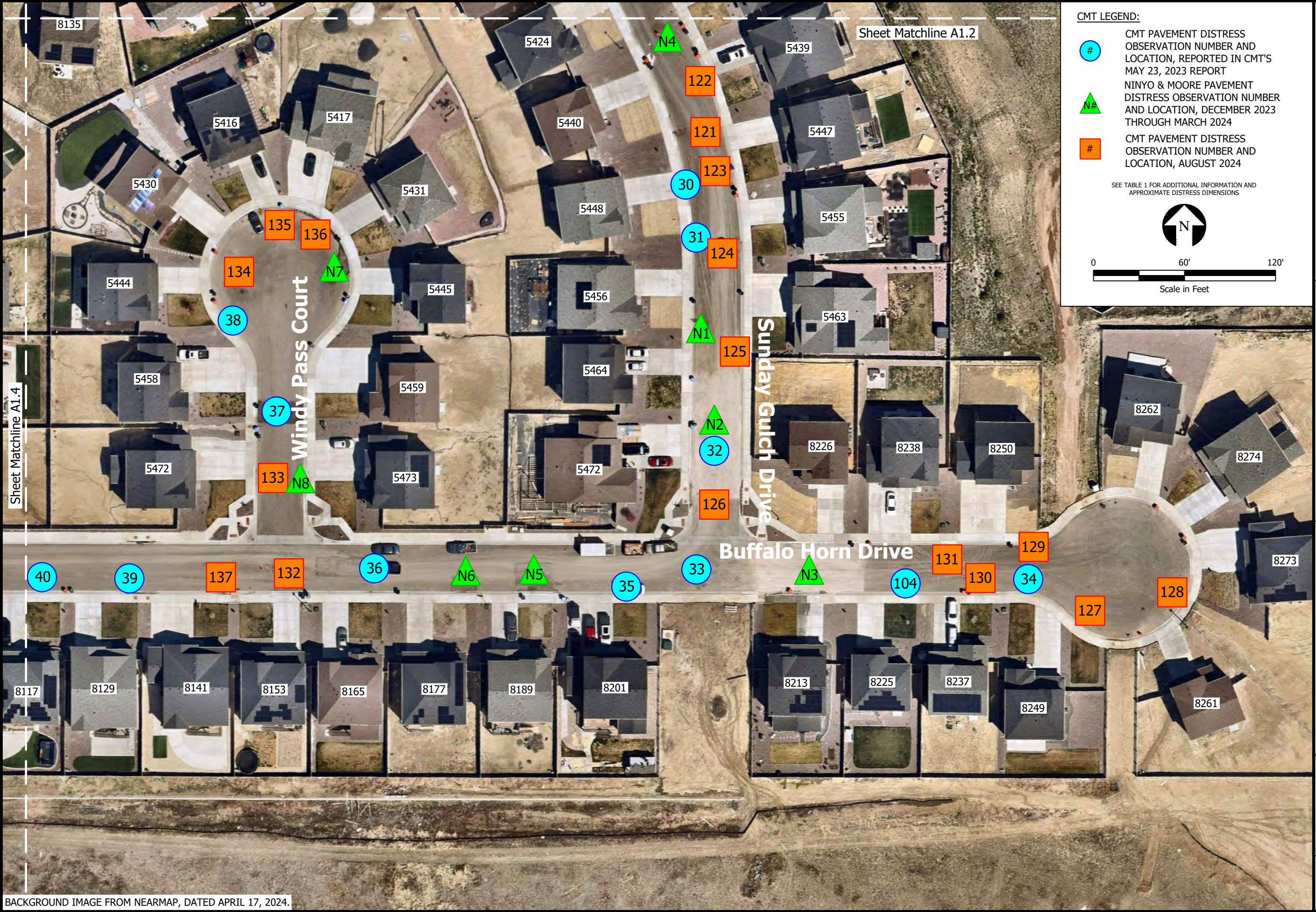


ASPHALT DISTRESS LOCATIONS

PROJECT NO:	22.141	PROJECT NAME:	Trails at Aspen Ridge Settlement Evaluation
DRAWN BY:	MSR	CHECKED BY:	--
DWG DATE:	09.04.24	REV. DATE:	--

A1.2

C:\Users\jmeed\CMT Technical Services\Colorado Forensic - External\Sharepoint - CMT Project Files\22.141.F.Trails at Aspen Ridge Settlement Evaluation\ACAD\22.141.Updated Pavement Distress ID Map.dwg 9/4/2024 4:28 PM



CMT LEGEND:

- # CMT PAVEMENT DISTRESS OBSERVATION NUMBER AND LOCATION, REPORTED IN CMT'S MAY 23, 2023 REPORT
- N# NINYO & MOORE PAVEMENT DISTRESS OBSERVATION NUMBER AND LOCATION, DECEMBER 2023 THROUGH MARCH 2024
- # CMT PAVEMENT DISTRESS OBSERVATION NUMBER AND LOCATION, AUGUST 2024

SEE TABLE 1 FOR ADDITIONAL INFORMATION AND APPROXIMATE DISTRESS DIMENSIONS

Scale in Feet



ASPHALT DISTRESS LOCATIONS

PROJECT NO:	22.141
PROJECT NAME:	Trails at Aspen Ridge Settlement Evaluation
DRAWN BY:	MSR
DWG DATE:	09.04.24
CHECKED BY:	--
REV. DATE:	--

A1.3

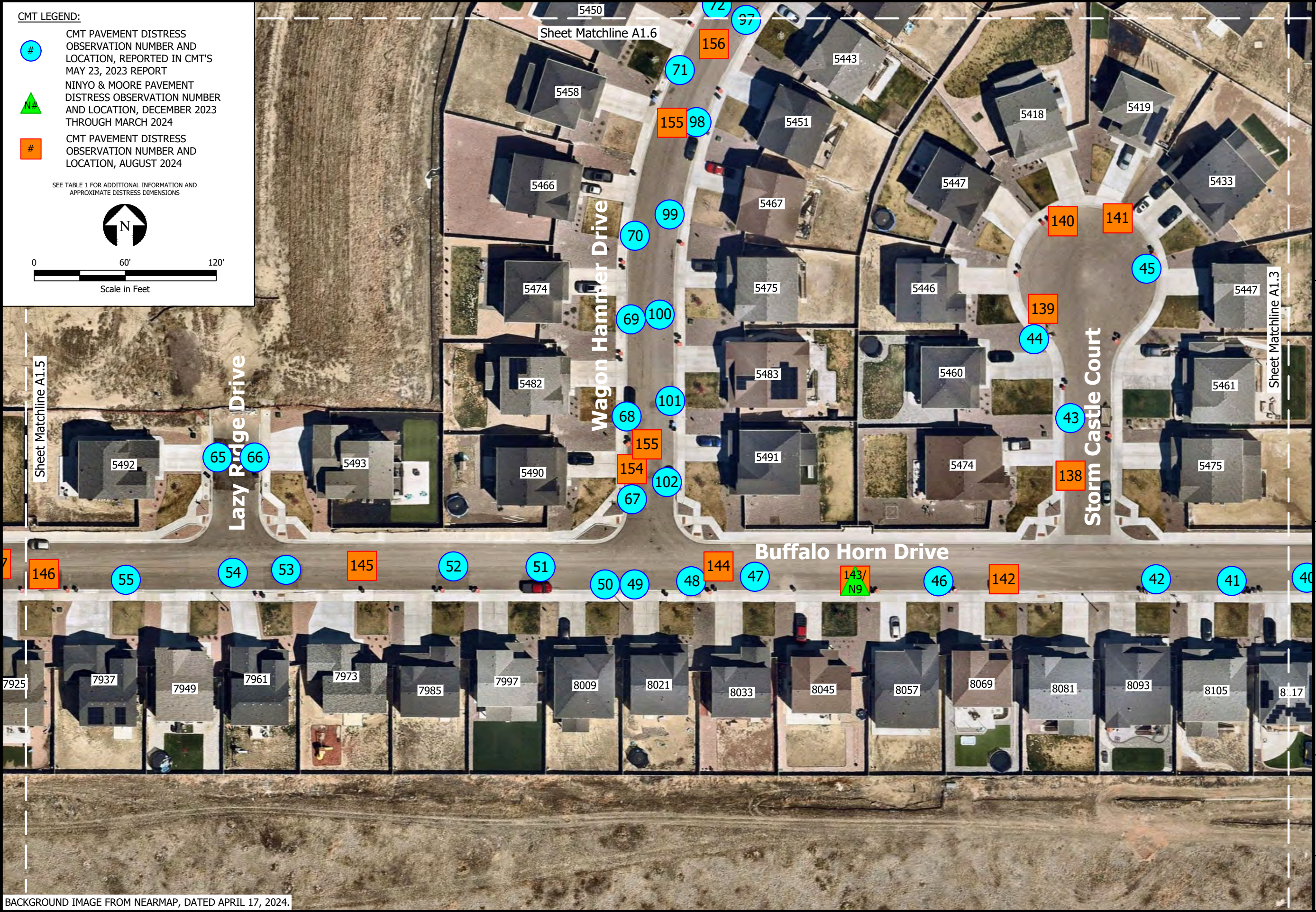
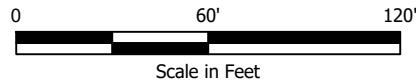
BACKGROUND IMAGE FROM NEARMAP, DATED APRIL 17, 2024.

C:\Users\jmeed\CMT Technical Services\Colorado Forensic - External\Sharepoint - CMT Project Files\22.141.F.Trails at Aspen, Ridge Settlement Evaluation\ACAD\22.141.Updated Pavement Distress ID Map.dwg 9/4/2024 4:28 PM

CMT LEGEND:

- # CMT PAVEMENT DISTRESS OBSERVATION NUMBER AND LOCATION, REPORTED IN CMT'S MAY 23, 2023 REPORT
- ▲ NINYO & MOORE PAVEMENT DISTRESS OBSERVATION NUMBER AND LOCATION, DECEMBER 2023 THROUGH MARCH 2024
- # CMT PAVEMENT DISTRESS OBSERVATION NUMBER AND LOCATION, AUGUST 2024

SEE TABLE 1 FOR ADDITIONAL INFORMATION AND APPROXIMATE DISTRESS DIMENSIONS



ASPHALT DISTRESS LOCATIONS

PROJECT NO:	22.141
PROJECT NAME:	Trails at Aspen Ridge Settlement Evaluation
DRAWN BY:	MSR
DWG DATE:	09.04.24
CHECKED BY:	--
REV. DATE:	--

A1.4

C:\Users\jmeed\CMT Technical Services\Colorado Forensic - External\Sharepoint - CMT Project Files\22.141.F.Trails at Aspen Ridge Settlement Evaluation\ACAD\22.141.Updated Pavement Distress ID Map.dwg 9/4/2024 4:28 PM

CMT LEGEND:



CMT PAVEMENT DISTRESS OBSERVATION NUMBER AND LOCATION, REPORTED IN CMT'S MAY 23, 2023 REPORT



NINYO & MOORE PAVEMENT DISTRESS OBSERVATION NUMBER AND LOCATION, DECEMBER 2023 THROUGH MARCH 2024



CMT PAVEMENT DISTRESS OBSERVATION NUMBER AND LOCATION, AUGUST 2024

SEE TABLE 1 FOR ADDITIONAL INFORMATION AND APPROXIMATE DISTRESS DIMENSIONS



0 60' 120'

Scale in Feet



BACKGROUND IMAGE FROM NEARMAP, DATED APRIL 17, 2024.



ASPHALT DISTRESS LOCATIONS

PROJECT NO:	22.141
PROJECT NAME:	Trails at Aspen Ridge Settlement Evaluation
DRAWN BY:	MSR
DWG DATE:	09.04.24
CHECKED BY:	--
REV. DATE:	--

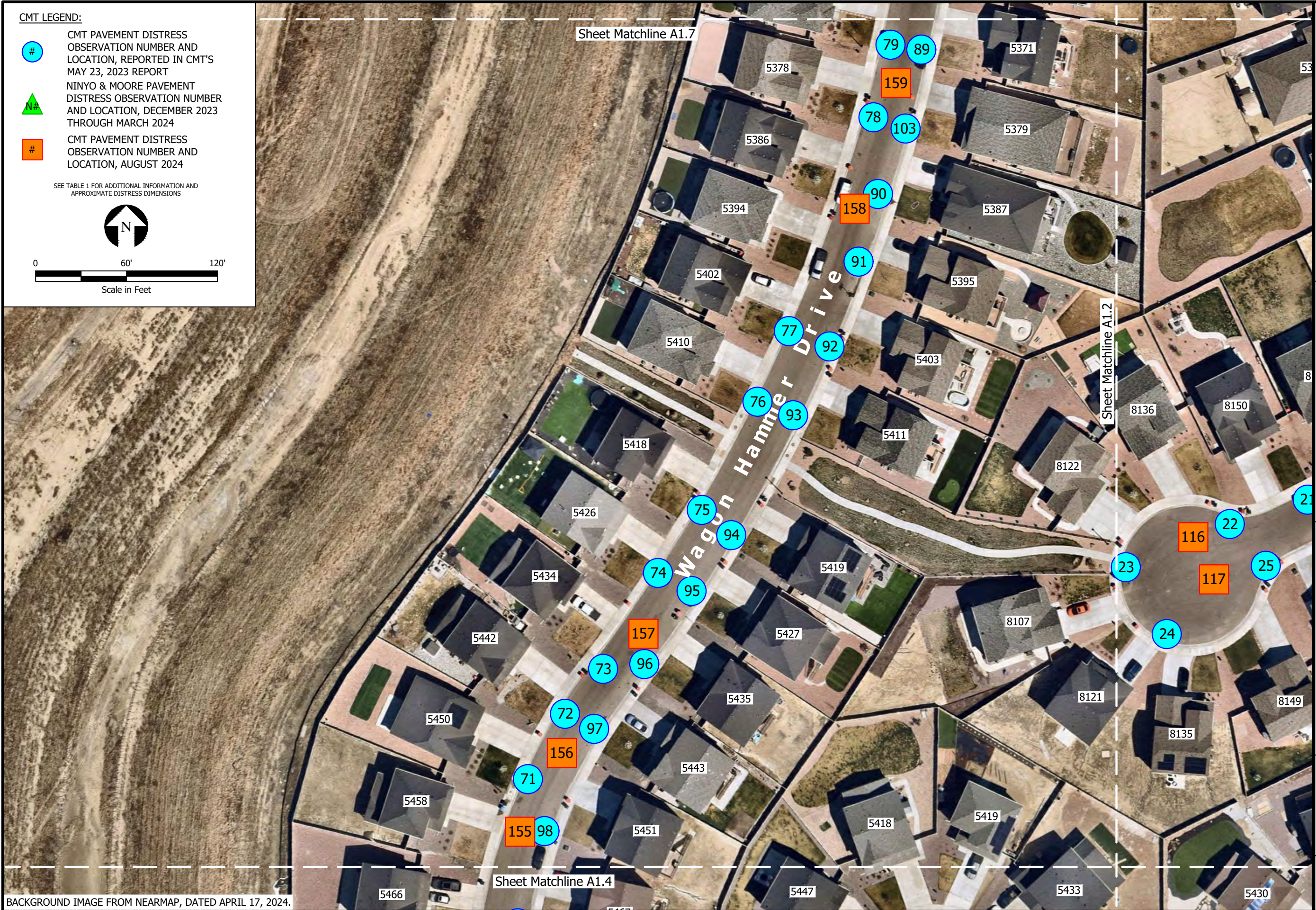
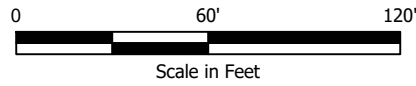
A1.5

C:\Users\jmeed\CMT Technical Services\Colorado Forensic - External\Sharepoint - CMT Project Files\22.141.F.Trails at Aspen Ridge Settlement Evaluation\ACAD\22.141.Updated Pavement Distress ID Map.dwg 9/4/2024 4:28 PM

CMT LEGEND:

- # CMT PAVEMENT DISTRESS OBSERVATION NUMBER AND LOCATION, REPORTED IN CMT'S MAY 23, 2023 REPORT
- ▲ NINYO & MOORE PAVEMENT DISTRESS OBSERVATION NUMBER AND LOCATION, DECEMBER 2023 THROUGH MARCH 2024
- # CMT PAVEMENT DISTRESS OBSERVATION NUMBER AND LOCATION, AUGUST 2024

SEE TABLE 1 FOR ADDITIONAL INFORMATION AND APPROXIMATE DISTRESS DIMENSIONS



BACKGROUND IMAGE FROM NEARMAP, DATED APRIL 17, 2024.



ASPHALT DISTRESS LOCATIONS

PROJECT NO:	22.141
PROJECT NAME:	Trails at Aspen Ridge Settlement Evaluation
DRAWN BY:	MSR
DWG DATE:	09.04.24
CHECKED BY:	--
REV. DATE:	--

A1.6

C:\Users\jmsreed\CMT Technical Services\Colorado Forensic - External\Sharepoint - CMT Project Files\22.141.F.Trails at Aspen Ridge Settlement Evaluation\ACAD\22.141.Updated Pavement Distress ID Map.dwg 9/4/2024 4:28 PM

CMT LEGEND:



CMT PAVEMENT DISTRESS OBSERVATION NUMBER AND LOCATION, REPORTED IN CMT'S MAY 23, 2023 REPORT

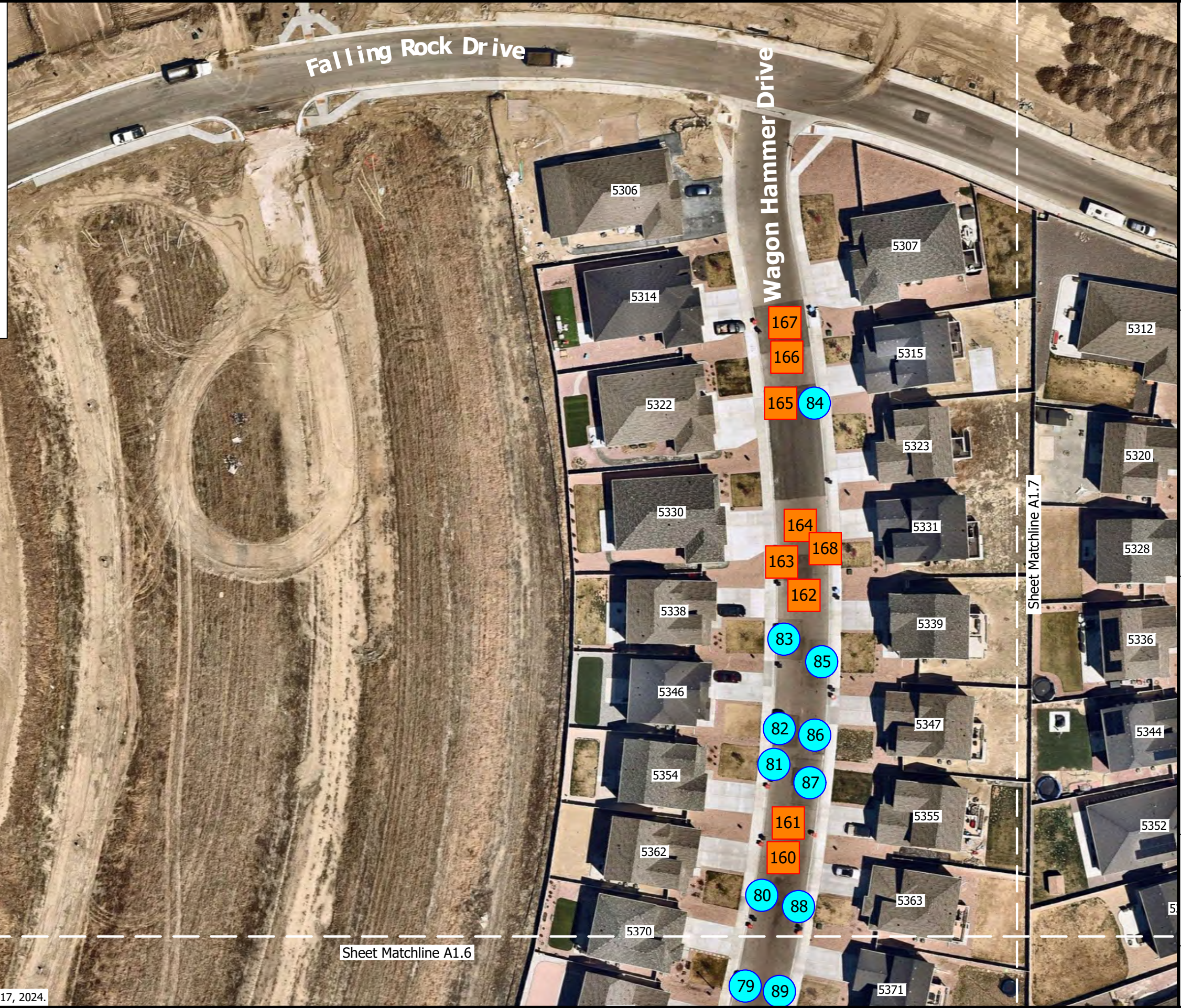
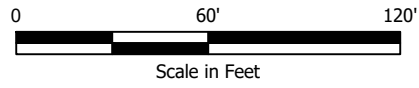


NINYO & MOORE PAVEMENT DISTRESS OBSERVATION NUMBER AND LOCATION, DECEMBER 2023 THROUGH MARCH 2024



CMT PAVEMENT DISTRESS OBSERVATION NUMBER AND LOCATION, AUGUST 2024

SEE TABLE 1 FOR ADDITIONAL INFORMATION AND APPROXIMATE DISTRESS DIMENSIONS



Sheet Matchline A1.6

Sheet Matchline A1.7



ASPHALT DISTRESS LOCATIONS

PROJECT NO:	22.141
PROJECT NAME:	Trails at Aspen Ridge Settlement Evaluation
DRAWN BY:	MSR
DWG DATE:	09.04.24
CHECKED BY:	--
REV. DATE:	--

A1.7

BACKGROUND IMAGE FROM NEARMAP, DATED APRIL 17, 2024.



DIST_01-1



DIST_01-2



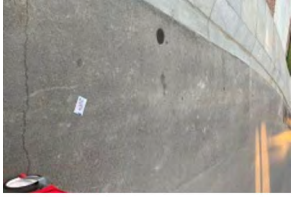
DIST_01-3



DIST_01-4



DIST_02-1



DIST_02-2



DIST_03-1



DIST_03-2



DIST_03-3



DIST_04-1



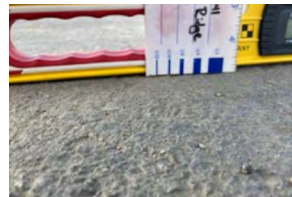
DIST_04-2



DIST_05-1



DIST_05-2



DIST_06-1



DIST_06-2



DIST_07-1



DIST_07-2



DIST_08-1



DIST_08-2



DIST_09-1



DIST_09-2



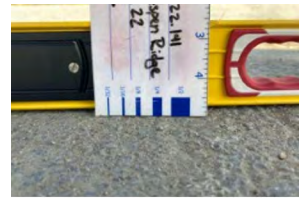
DIST_10-1



DIST_10-2



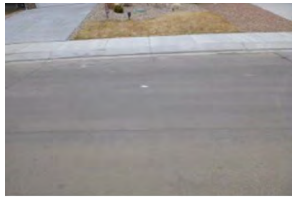
DIST_11-1



DIST_12-1



DIST_12-2



DIST_12-3



DIST_12-4



DIST_12-5



DIST_13-1



DIST_13-2



DIST_13-3



DIST_14-1



DIST_14-2



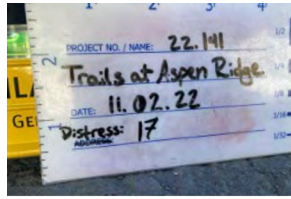
DIST_15-1



DIST_16-1



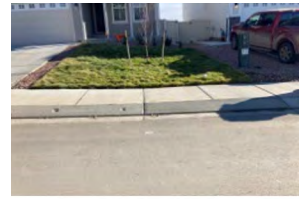
DIST_17-1



DIST_17-2



DIST_18-1



DIST_18-2



DIST_19-1



DIST_19-2



DIST_19-3



DIST_19-4



DIST_20-1



DIST_20-2



DIST_20-3



DIST_20-4



DIST_21-1



DIST_21-2



DIST_21-3



DIST_21-4



DIST_21-5



DIST_22-1



DIST_22-2



DIST_22-3



DIST_23-1



DIST_23-2



DIST_24-1



DIST_24-2



DIST_25-1



DIST_25-2



DIST_26-1



DIST_26-2



DIST_26-3



DIST_26-4



DIST_26-5



DIST_26-6



DIST_27-1



DIST_27-2



DIST_28-1



DIST_28-2



DIST_28-3



DIST_29-1



DIST_29-2



DIST_30-1



DIST_30-2



DIST_31-1



DIST_32-1



DIST_32-2



DIST_32-3



DIST_33-1



DIST_33-2



DIST_34-1



DIST_34-2



DIST_34-3



DIST_34-4



DIST_35-1



DIST_35-2



DIST_36-1



DIST_36-2



DIST_37-1



DIST_37-2



DIST_38-1



DIST_38-2



DIST_39-1



DIST_39-2



DIST_40-1



DIST_41-1



DIST_42-1



DIST_42-2



DIST_43-1



DIST_43-2



DIST_43-3



DIST_43-4



DIST_43-5



DIST_43-6



DIST_44-1



DIST_44-2



DIST_44-3



DIST_44-4



DIST_44-5



DIST_44-6



DIST_44-7



DIST_45-1



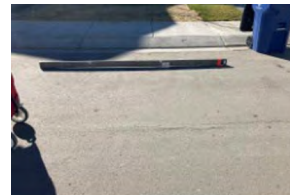
DIST_45-2



DIST_46-1



DIST_46-2



DIST_47-1



DIST_47-2



DIST_47-3



DIST_48-1



DIST_48-2



DIST_49-1



DIST_50-1



DIST_51-1



DIST_51-2



DIST_51-3



DIST_52-1



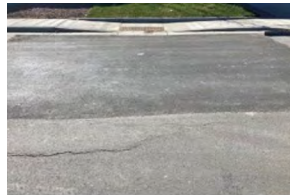
DIST_52-2



DIST_52-3



DIST_53-1



DIST_53-2



DIST_53-3



DIST_53-4



DIST_54-1



DIST_55-1



DIST_55-2



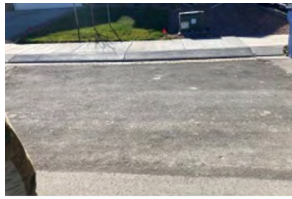
DIST_56-1



DIST_57-1



DIST_58-1



DIST_58-2



DIST_58-3



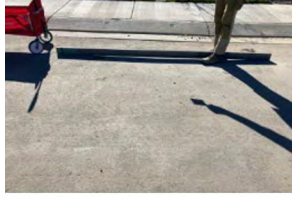
DIST_59-1



DIST_59-2



DIST_60-1



DIST_60-2



DIST_61-1



DIST_61-2



DIST_62-1



DIST_63-1



DIST_63-2



DIST_64-1



DIST_64-2



DIST_64-3



DIST_64-4



DIST_64-5



DIST_64-6



DIST_65-1



DIST_66-1



DIST_66-2



DIST_67-1



DIST_67-2



DIST_67-3



DIST_67-4



DIST_68-1



DIST_68-2



DIST_68-3



DIST_68-4



DIST_68-5



DIST_68-6



DIST_68-7



DIST_68-8



DIST_68-9



DIST_68-10



DIST_69-1



DIST_69-2



DIST_69-3



DIST_69-4



DIST_69-5



DIST_69-6



DIST_69-7



DIST_69-8



DIST_69-9



DIST_70-1



DIST_70-2



DIST_70-3



DIST_70-4



DIST_70-5



DIST_70-6



DIST_70-7



DIST_71-1



DIST_71-2



DIST_71-3



DIST_71-4



DIST_71-5



DIST_72-1



DIST_72-2



DIST_72-3



DIST_72-4



DIST_73-1



DIST_73-2



DIST_73-3



DIST_73-4



DIST_73-5



DIST_73-6



DIST_73-7



DIST_73-8



DIST_73-9



DIST_73-10



DIST_73-11



DIST_73-12



DIST_73-13



DIST_74-1



DIST_74-2



DIST_74-3



DIST_74-4



DIST_75-1



DIST_75-2



DIST_75-3



DIST_75-4



DIST_76-1



DIST_76-2



DIST_76-3



DIST_76-4



DIST_77-1



DIST_77-2



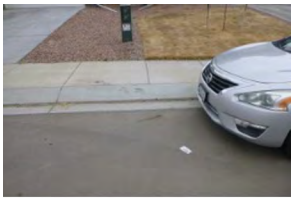
DIST_77-3



DIST_77-4



DIST_77-5



DIST_77-6



DIST_77-7



DIST_78-1



DIST_78-2



DIST_78-3



DIST_79-1



DIST_79-2



DIST_79-3



DIST_79-4



DIST_79-5



DIST_80-1



DIST_80-2



DIST_80-3



DIST_80-4



DIST_80-5



DIST_80-6



DIST_80-7



DIST_80-8



DIST_80-9



DIST_80-10



DIST_81-1



DIST_81-2



DIST_81-3



DIST_81-4



DIST_81-5



DIST_81-6



DIST_81-7



DIST_81-8



DIST_81-9



DIST_81-10



DIST_81-11



DIST_82-1



DIST_82-2



DIST_82-3



DIST_82-4



DIST_82-5



DIST_82-6



DIST_82-7



DIST_82-8



DIST_82-9



DIST_82-10



DIST_82-11



DIST_82-12



DIST_82-13



DIST_82-14



DIST_83-1



DIST_83-2



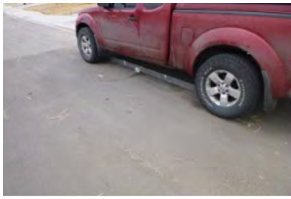
DIST_83-3



DIST_83-4



DIST_83-5



DIST_83-6



DIST_83-7



DIST_83-8



DIST_83-9



DIST_83-10



DIST_83-11



DIST_83-12



DIST_83-13



DIST_83-14



DIST_84-1



DIST_84-2



DIST_84-3



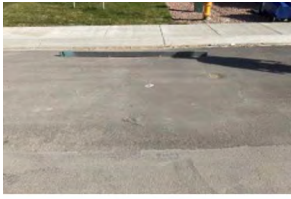
DIST_84-4



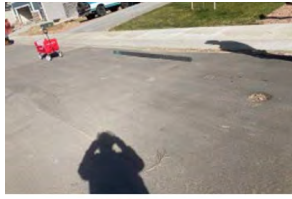
DIST_84-5



DIST_85-1



DIST_85-2



DIST_85-3



DIST_86-1



DIST_86-2



DIST_86-3



DIST_86-4



DIST_86-5



DIST_86-6



DIST_87-1



DIST_88-1



DIST_88-2



DIST_88-3



DIST_88-4



DIST_89-1



DIST_89-2



DIST_89-3



DIST_89-4



DIST_89-5



DIST_89-6



DIST_89-7



DIST_89-8



DIST_89-9



DIST_89-10



DIST_90-1



DIST_90-2



DIST_90-3



DIST_90-4



DIST_90-5



DIST_90-6



DIST_90-7



DIST_90-8



DIST_90-9



DIST_90-10



DIST_90-11



DIST_91-1



DIST_91-2



DIST_91-3



DIST_91-4



DIST_91-5



DIST_91-6



DIST_91-7



DIST_91-8



DIST_92-1



DIST_92-2



DIST_92-3



DIST_92-4



DIST_92-5



DIST_92-6



DIST_92-7



DIST_92-8



DIST_92-9



DIST_92-10



DIST_92-11



DIST_92-12



DIST_93-1



DIST_93-2



DIST_93-3



DIST_93-4



DIST_93-5



DIST_93-6



DIST_93-7



DIST_94-1



DIST_94-2



DIST_95-1



DIST_95-2



DIST_95-3



DIST_95-4



DIST_95-5



DIST_95-6



DIST_95-7



DIST_95-8



DIST_95-9



DIST_95-10



DIST_95-11



DIST_95-12



DIST_95-13



DIST_95-14



DIST_95-15



DIST_96-1



DIST_96-2



DIST_96-3



DIST_96-4



DIST_96-5



DIST_96-6



DIST_96-7



DIST_96-8



DIST_96-9



DIST_96-10



DIST_96-11



DIST_96-12



DIST_97-1



DIST_97-2



DIST_97-3



DIST_97-4



DIST_97-5



DIST_98-1



DIST_98-2



DIST_98-3



DIST_98-4



DIST_98-5



DIST_99-1



DIST_99-2



DIST_99-3



DIST_99-4



DIST_99-5



DIST_99-6



DIST_99-7



DIST_99-8



DIST_99-9



DIST_99-10



DIST_99-11



DIST_100-1



DIST_100-2



DIST_100-3



DIST_100-4



DIST_100-5



DIST_100-6



DIST_100-7



DIST_100-8



DIST_100-9



DIST_101-1



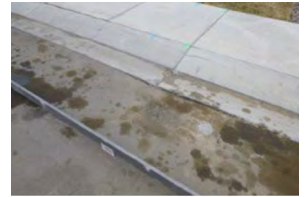
DIST_101-2



DIST_101-3



DIST_101-4



DIST_101-5



DIST_101-6



DIST_101-7



DIST_101-8



DIST_101-9



DIST_101-10



DIST_101-11



DIST_102-1



DIST_102-2



DIST_102-3



DIST_102-4



DIST_102-5



DIST_103-1



DIST_103-2



DIST_103-3



DIST_103-4



DIST_103-5



DIST_103-6



DIST_103-7



DIST_103-8



DIST_103-9



DIST_103-10



DIST_103-11



DIST_103-12



DIST_103-13



DIST_103-14



DIST_103-15



DIST_103-16



DIST_103-17



DIST_104-1



DIST_104-2



DIST_104-3



DIST_104-4



DIST_104-5



DIST_01-9



DIST_02-3



DIST_02-4



DIST_02-5



DIST_02-6



DIST_02-7



DIST_02-8



DIST_03-4



DIST_03-5



DIST_03-6



DIST_03-7



DIST_03-8



DIST_04-3



DIST_04-4



DIST_04-5



DIST_04-6



DIST_04-7



DIST_05-3



DIST_05-4



DIST_05-5



DIST_05-6



DIST_06-3



DIST_06-4



DIST_06-5



DIST_06-6



DIST_06-7



DIST_07-3



DIST_07-4



DIST_07-5



DIST_07-6



DIST_08-3



DIST_08-4



DIST_08-5



DIST_08-6



DIST_08-7



DIST_09-3



DIST_09-4



DIST_09-5



DIST_09-6



DIST_09-7



DIST_10-3



DIST_10-4



DIST_10-5



DIST_10-6



DIST_10-7



DIST_11-2



DIST_11-3



DIST_11-4



DIST_11-5



DIST_11-6



DIST_12-6



DIST_12-7



DIST_12-8



DIST_12-9



DIST_13-4



DIST_13-5



DIST_13-6



DIST_13-7



DIST_14-3



DIST_14-4



DIST_14-5



DIST_14-6



DIST_15-2



DIST_15-3



DIST_15-4



DIST_15-5



DIST_16-2



DIST_16-3



DIST_16-4



DIST_16-5



DIST_16-6



DIST_16-7



DIST_16-8



DIST_17-3



DIST_17-4



DIST_17-5



DIST_17-6



DIST_17-7



DIST_17-8



DIST_17-9



DIST_18-3



DIST_18-4



DIST_18-5



DIST_18-6



DIST_18-7



DIST_18-8



DIST_18-9



DIST_19-5



DIST_19-6



DIST_19-7



DIST_19-8



DIST_19-9



DIST_20-5



DIST_20-6



DIST_20-7



DIST_20-8



DIST_20-9



DIST_20-10



DIST_21-6



DIST_21-7



DIST_21-8



DIST_21-9



DIST_21-10



DIST_21-11



DIST_22-4



DIST_22-5



DIST_22-6



DIST_22-7



DIST_22-8



DIST_22-9



DIST_23-3



DIST_23-4



DIST_23-5



DIST_23-6



DIST_23-7



DIST_23-8



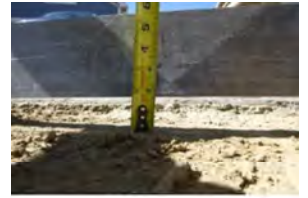
DIST_24-3



DIST_24-4



DIST_24-5



DIST_24-6



DIST_25-3



DIST_25-4



DIST_25-5



DIST_25-6



DIST_25-7



DIST_25-8



DIST_25-9



DIST_25-10



DIST_25-11



DIST_25-12



DIST_26-7



DIST_26-8



DIST_26-9



DIST_26-10



DIST_26-11



DIST_26-12



DIST_26-13



DIST_26-14



DIST_26-15



DIST_26-16



DIST_26-17



DIST_26-18



DIST_26-19



DIST_27-3



DIST_27-4



DIST_27-5



DIST_27-6



DIST_27-7



DIST_27-8



DIST_27-9



DIST_27-10



DIST_27-11



DIST_27-12



DIST_28-4



DIST_28-5



DIST_28-6



DIST_28-7



DIST_28-8



DIST_28-9



DIST_28-10



DIST_29-3



DIST_29-4



DIST_29-5



DIST_29-6



DIST_29-7



DIST_30-3



DIST_30-4



DIST_30-5



DIST_31-2



DIST_31-3



DIST_31-4



DIST_31-5



DIST_31-6



DIST_31-7



DIST_32-4



DIST_32-5



DIST_32-6



DIST_32-7



DIST_32-8



DIST_33-4



DIST_33-5



DIST_33-6



DIST_33-7



DIST_33-8



DIST_33-9



DIST_33-10



DIST_34-5



DIST_34-6



DIST_34-7



DIST_34-8



DIST_35-3



DIST_35-4



DIST_35-5



DIST_35-6



DIST_35-7



DIST_35-8



DIST_36-3



DIST_36-4



DIST_36-5



DIST_36-6



DIST_36-7



DIST_36-8



DIST_36-9



DIST_36-10



DIST_36-11



DIST_36-12



DIST_36-13



DIST_36-14



DIST_36-15



DIST_36-16



DIST_36-17



DIST_36-18



DIST_36-19



DIST_36-20



DIST_37-3



DIST_37-4



DIST_37-5



DIST_37-6



DIST_37-7



DIST_37-8



DIST_37-9



DIST_37-10



DIST_38-3



DIST_38-4



DIST_38-5



DIST_38-6



DIST_38-7



DIST_38-8



DIST_38-9



DIST_38-10



DIST_39-3



DIST_39-4



DIST_39-5



DIST_39-6



DIST_39-7



DIST_39-8



DIST_40-2



DIST_40-3



DIST_40-4



DIST_40-5



DIST_40-6



DIST_41-2



DIST_41-3



DIST_41-4



DIST_42-3



DIST_42-4



DIST_42-5



DIST_43-7



DIST_43-8



DIST_43-9



DIST_43-10



DIST_45-3



DIST_45-4



DIST_45-5



DIST_45-6



DIST_46-3



DIST_46-4



DIST_46-5



DIST_46-6



DIST_46-7



DIST_46-8



DIST_47-4



DIST_47-5



DIST_47-6



DIST_47-7



DIST_47-8



DIST_47-9



DIST_47-10



DIST_48-3



DIST_48-4



DIST_48-5



DIST_48-6



DIST_48-7



DIST_48-8



DIST_49-2



DIST_49-3



DIST_49-4



DIST_49-5



DIST_50-2



DIST_50-3



DIST_50-4



DIST_50-5



DIST_50-6



DIST_50-7



DIST_50-8



DIST_51-4



DIST_51-5



DIST_51-6



DIST_51-7



DIST_51-8



DIST_52-4



DIST_52-5



DIST_52-6



DIST_52-7



DIST_52-8



DIST_53-5



DIST_53-6



DIST_53-7



DIST_53-8



DIST_53-9



DIST_53-10



DIST_53-11



DIST_53-12



DIST_53-13



DIST_54-2



DIST_54-3



DIST_54-4



DIST_54-5



DIST_54-6



DIST_54-7



DIST_54-8



DIST_54-9



DIST_54-10



DIST_54-11



DIST_54-12



DIST_55-3



DIST_55-4



DIST_55-5



DIST_55-6



DIST_55-7



DIST_55-8



DIST_56-2



DIST_56-3



DIST_56-4



DIST_56-5



DIST_56-6



DIST_57-2



DIST_57-3



DIST_57-4



DIST_57-5



DIST_57-6



DIST_57-7



DIST_58-4



DIST_58-5



DIST_58-6



DIST_58-7



DIST_58-8



DIST_58-9



DIST_59-3



DIST_59-4



DIST_59-5



DIST_59-6



DIST_59-7



DIST_59-8



DIST_59-9



DIST_60-3



DIST_60-4



DIST_60-5



DIST_60-6



DIST_60-7



DIST_60-8



DIST_61-3



DIST_61-4



DIST_61-5



DIST_61-6



DIST_61-7



DIST_61-8



DIST_62-2



DIST_62-3



DIST_62-4



DIST_62-5



DIST_62-6



DIST_62-7



DIST_62-8



DIST_62-9



DIST_62-10



DIST_63-3



DIST_63-4



DIST_63-5



DIST_63-6



DIST_63-7



DIST_63-8



DIST_63-9



DIST_64-7



DIST_64-8



DIST_64-9



DIST_64-10



DIST_65-2



DIST_65-3



DIST_65-4



DIST_65-5



DIST_65-6



DIST_65-7



DIST_65-8



DIST_65-9



DIST_65-10



DIST_67-5



DIST_67-6



DIST_68-11



DIST_68-12



DIST_68-13



DIST_68-14



DIST_68-15



DIST_68-16



DIST_68-17



DIST_69-10



DIST_69-11



DIST_69-12



DIST_69-13



DIST_69-14



DIST_69-15



DIST_70-8



DIST_70-9



DIST_70-10



DIST_70-11



DIST_70-12



DIST_71-6



DIST_71-7



DIST_71-8



DIST_71-9



DIST_71-10



DIST_72-5



DIST_72-6



DIST_72-7



DIST_72-8



DIST_72-9



DIST_72-10



DIST_73-14



DIST_73-15



DIST_73-16



DIST_73-17



DIST_73-18



DIST_73-19



DIST_74-5



DIST_74-6



DIST_74-7



DIST_74-8



DIST_75-5



DIST_75-6



DIST_75-7



DIST_75-8



DIST_76-5



DIST_76-6



DIST_76-7



DIST_76-8



DIST_77-8



DIST_77-9



DIST_77-10



DIST_77-11



DIST_78-4



DIST_78-5



DIST_78-6



DIST_78-7



DIST_78-8



DIST_78-9



DIST_78-10



DIST_78-11



DIST_79-6



DIST_79-7



DIST_79-8



DIST_79-9



DIST_79-10



DIST_79-11



DIST_79-12



DIST_79-13



DIST_79-14



DIST_80-11



DIST_80-12



DIST_80-13



DIST_80-14



DIST_80-15



DIST_80-16



DIST_80-17



DIST_81-12



DIST_81-13



DIST_81-14



DIST_81-15



DIST_81-16



DIST_81-17



DIST_82-15



DIST_82-16



DIST_82-17



DIST_82-18



DIST_82-19



DIST_83-15



DIST_83-16



DIST_83-17



DIST_83-18



DIST_83-19



DIST_84-6



DIST_84-7



DIST_84-8



DIST_84-9



DIST_85-4



DIST_85-5



DIST_85-6



DIST_85-7



DIST_86-7



DIST_86-8



DIST_86-9



DIST_86-10



DIST_86-11



DIST_87-2



DIST_87-3



DIST_87-4



DIST_87-5



DIST_88-5



DIST_88-6



DIST_88-7



DIST_88-8



DIST_88-9



DIST_88-10



DIST_88-11



DIST_88-12



DIST_89-11



DIST_89-12



DIST_89-13



DIST_89-14



DIST_89-15



DIST_90-12



DIST_90-13



DIST_90-14



DIST_90-15



DIST_90-16



DIST_90-17



DIST_90-18



DIST_90-19



DIST_90-20



DIST_91-9



DIST_91-10



DIST_91-11



DIST_91-12



DIST_91-13



DIST_91-14



DIST_91-15



DIST_91-16



DIST_92-13



DIST_92-14



DIST_92-15



DIST_92-16



DIST_92-17



DIST_92-18



DIST_93-8



DIST_93-9



DIST_93-10



DIST_93-11



DIST_94-3



DIST_94-4



DIST_94-5



DIST_94-6



DIST_95-16



DIST_95-17



DIST_95-18



DIST_95-19



DIST_95-20



DIST_95-21



DIST_95-22



DIST_95-23



DIST_96-13



DIST_96-14



DIST_96-15



DIST_96-16



DIST_96-17



DIST_96-18



DIST_96-19



DIST_96-20



DIST_97-6



DIST_97-7



DIST_97-8



DIST_97-9



DIST_97-10



DIST_98-6



DIST_98-7



DIST_98-8



DIST_98-9



DIST_98-10



DIST_98-11



DIST_99-12



DIST_99-13



DIST_99-14



DIST_99-15



DIST_99-16



DIST_100-10



DIST_100-11



DIST_100-12



DIST_100-13



DIST_100-14



DIST_101-12



DIST_101-13



DIST_101-14



DIST_101-15



DIST_101-16



DIST_101-17



DIST_101-18



DIST_102-6



DIST_102-7



DIST_102-8



DIST_102-9



DIST_102-10



DIST_103-18



DIST_103-19



DIST_103-20



DIST_103-21



DIST_103-22



DIST_104-6



DIST_104-7



DIST_104-8



DIST_104-9



DIST_105-1



DIST_105-2



DIST_105-3



DIST_105-4



DIST_105-5



DIST_106-1



DIST_106-2



DIST_106-3



DIST_106-4



DIST_106-5



DIST_107-1



DIST_107-2



DIST_107-3



DIST_107-4



DIST_107-5



DIST_107-6



DIST_108-1



DIST_108-2



DIST_108-3



DIST_108-4



DIST_108-5



DIST_108-6



DIST_108-7



DIST_109-1



DIST_109-2



DIST_109-3



DIST_109-4



DIST_109-5



DIST_110-1



DIST_110-3



DIST_110-4



DIST_110-5



DIST_110-6



DIST_110-7



DIST_110-8



DIST_111-1



DIST_111-2



DIST_111-3



DIST_111-4



DIST_111-5



DIST_111-6



DIST_112-1



DIST_112-2



DIST_112-3



DIST_112-4



DIST_112-5



DIST_113-1



DIST_113-2



DIST_113-3



DIST_113-4



DIST_113-5



DIST_114-1



DIST_114-2



DIST_114-3



DIST_114-4



DIST_114-5



DIST_115-1



DIST_115-2



DIST_115-3



DIST_115-4



DIST_115-5



DIST_116-1



DIST_116-2



DIST_116-3



DIST_116-4



DIST_116-5



DIST_116-6



DIST_116-7



DIST_117-1



DIST_117-2



DIST_117-3



DIST_117-4



DIST_117-5



DIST_118-1



DIST_118-2



DIST_118-3



DIST_118-4



DIST_118-5



DIST_118-6



DIST_118-7



DIST_119-1



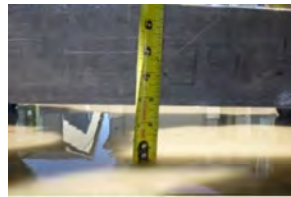
DIST_119-2



DIST_119-3



DIST_119-4



DIST_119-5



DIST_119-6



DIST_119-7



DIST_120-1



DIST_120-2



DIST_120-3



DIST_120-4



DIST_120-5



DIST_120-6



DIST_120-7



DIST_120-8



DIST_120-9



DIST_120-10



DIST_120-11



DIST_120-12



DIST_121-1



DIST_121-2



DIST_125-5



DIST_126-1



DIST_126-2



DIST_126-3



DIST_126-4



DIST_126-5



DIST_126-6



DIST_127-1



DIST_127-2



DIST_127-3



DIST_127-4



DIST_128-1



DIST_128-2



DIST_128-3



DIST_128-4



DIST_129-1



DIST_129-2



DIST_129-3



DIST_129-4



DIST_129-5



DIST_130-1



DIST_130-2



DIST_130-3



DIST_130-4



DIST_131-1



DIST_131-2



DIST_131-3



DIST_131-4



DIST_131-5



DIST_131-6



DIST_131-7



DIST_131-8



DIST_131-9



DIST_131-10



DIST_131-11



DIST_132-1



DIST_132-2



DIST_132-3



DIST_132-4



DIST_132-5



DIST_132-6



DIST_132-7



DIST_132-8



DIST_132-9



DIST_133-1



DIST_133-2



DIST_133-3



DIST_133-4



DIST_133-5



DIST_134-1



DIST_134-2



DIST_134-3



DIST_134-4



DIST_134-5



DIST_134-6



DIST_134-7



DIST_134-8



DIST_134-9



DIST_135-1



DIST_135-2



DIST_135-3



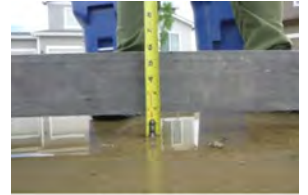
DIST_136-1



DIST_136-2



DIST_136-3



DIST_136-4



DIST_137-1



DIST_137-2



DIST_137-3



DIST_137-4



DIST_137-5



DIST_137-6



DIST_137-7



DIST_137-8



DIST_137-9



DIST_137-10



DIST_138-1



DIST_138-2



DIST_138-3



DIST_138-4



DIST_138-5



DIST_138-6



DIST_138-7



DIST_138-8



DIST_138-9



DIST_139-1



DIST_139-2



DIST_139-3



DIST_139-4



DIST_139-5



DIST_140-1



DIST_140-2



DIST_140-3



DIST_140-4



DIST_140-5



DIST_140-6



DIST_141-1



DIST_141-2



DIST_141-3



DIST_141-4



DIST_141-5



DIST_141-6



DIST_141-7



DIST_141-8



DIST_141-9



DIST_142-1



DIST_142-2



DIST_142-3



DIST_142-4



DIST_142-5



DIST_142-6



DIST_142-7



DIST_142-8



DIST_143-1



DIST_143-2



DIST_143-3



DIST_143-4



DIST_143-5



DIST_143-6



DIST_144-1



DIST_144-2



DIST_144-3



DIST_144-4



DIST_145-1



DIST_145-2



DIST_145-3



DIST_145-4



DIST_145-5



DIST_146-1



DIST_146-2



DIST_146-3



DIST_146-4



DIST_146-5



DIST_147-1



DIST_147-2



DIST_147-3



DIST_147-4



DIST_147-5



DIST_148-1



DIST_148-2



DIST_149-1



DIST_149-2



DIST_149-3



DIST_149-4



DIST_150-1



DIST_150-2



DIST_150-3



DIST_150-4



DIST_150-5



DIST_150-6



DIST_151-1



DIST_151-2



DIST_151-3



DIST_151-4



DIST_152-1



DIST_152-2



DIST_152-3



DIST_152-4



DIST_152-5



DIST_153-1



DIST_153-2



DIST_153-3



DIST_153-4



DIST_153-5



DIST_154-1



DIST_154-2



DIST_154-3



DIST_154-4



DIST_154-5



DIST_155-1



DIST_155-2



DIST_155-3



DIST_155-4



DIST_155-5



DIST_156-1



DIST_156-2



DIST_156-3



DIST_156-4



DIST_157-1



DIST_157-2



DIST_157-3



DIST_157-4



DIST_158-1



DIST_158-2



DIST_158-3



DIST_158-4



DIST_158-5



DIST_158-6



DIST_158-7



DIST_158-8



DIST_158-9



DIST_159-1



DIST_159-2



DIST_159-3



DIST_159-4



DIST_160-1



DIST_160-2



DIST_160-3



DIST_160-4



DIST_160-5



DIST_161-1



DIST_161-2



DIST_161-3



DIST_161-4



DIST_161-5



DIST_162-1



DIST_162-2



DIST_162-3



DIST_162-4



DIST_162-5



DIST_162-6



DIST_163-1



DIST_163-2



DIST_163-3



DIST_163-4



DIST_163-5



DIST_164-1



DIST_164-2



DIST_164-3



DIST_164-4



DIST_165-1



DIST_165-2



DIST_165-3



DIST_165-4



DIST_165-5



DIST_165-6



DIST_166-1



DIST_166-2



DIST_166-3



DIST_166-4



DIST_166-5



DIST_167-1



DIST_167-2



DIST_167-3



DIST_167-4



DIST_167-5



DIST_167-6



DIST_168-1



DIST_168-2



DIST_168-3



DIST_168-4



DIST_168-5



DIST_168-6



DIST_01-5



DIST_01-6



DIST_01-7



DIST_01-8



DIST_N3-2



DIST_N3-3



DIST_N3-4



DIST_N3-5



DIST_N4-1



DIST_N4-2



DIST_N4-3



DIST_N4-4



DIST_N4-5



DIST_N4-6



DIST_N4-7



DIST_N4-8



DIST_N4-9



DIST_N4-10



DIST_N4-11



DIST_N4-12



DIST_N4-13



DIST_N4-14



DIST_N4-15



DIST_N5-1



DIST_N5-2



DIST_N5-3



DIST_N5-4



DIST_N5-5



DIST_N5-6



DIST_N5-7



DIST_N5-8



DIST_N5-9



DIST_N6-1



DIST_N6-2



DIST_N6-3



DIST_N6-4



DIST_N6-5



DIST_N6-6



DIST_N6-7



DIST_N7-1



DIST_N7-2



DIST_N7-3



DIST_N7-4



DIST_N7-5



DIST_N7-6



DIST_N8-1



DIST_N8-2



DIST_N8-3



DIST_N8-4



DIST_N8-5



DIST_N8-6



DIST_N9-1



DIST_N9-2



DIST_N9-3



DIST_N9-4



DIST_N9-5



DIST_N9-6



DIST_N10-1



DIST_N10-2



DIST_N10-3



DIST_N10-4



DIST_N10-5



DIST_N11-1



DIST_N11-2



DIST_N11-3



DIST_N11-4



DIST_N11-5



DIST_N11-6



DIST_N11-7



DIST_N12-1



DIST_N12-2



DIST_N12-3



DIST_N12-4



DIST_N1-1



DIST_N1-2



DIST_N1-3



DIST_N1-4



DIST_N1-5



DIST_N1-6



DIST_N2-1



DIST_N2-2



DIST_N2-3



DIST_N3-1