

Architectural  
Structural  
Geotechnical



Materials Testing  
Forensic  
Civil/Planning

Job No. 191138

March 28<sup>th</sup>, 2023

Hicok Limited, LLC  
626 S 29th St  
Colorado Springs, CO 80904

Attn: Ryan Howser

Re: SDP Application – Floor Plan Letter  
Westsider's Garage  
626 S 29th St  
Lot 16B, A Resubdivision of Lots 15, 16 and 17 in Staggs Industrial Development  
Colorado Springs, Colorado

This letter serves as a notice that an architectural floor plan is being prepared for this project as a part of the Site Development Plan application.

I hope this provides the information you have requested. Should you have questions, please feel free to contact our office.

Cordially,

RMG – Rocky Mountain Group

A handwritten signature in blue ink that reads 'Tim Talboys'. The signature is written in a cursive, flowing style.

Timothy Talboys  
Civil Staff Engineer

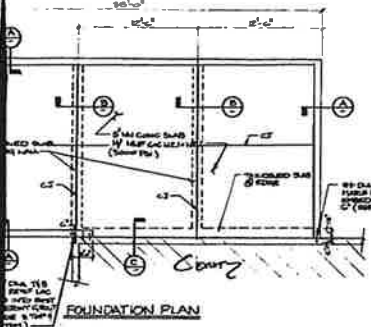


**SPORER ENGINEERING**  
 303 LAUREL AVE.  
 CHICAGO, ILL. 60608  
 TEL. 312-321-1111  
 FAX 312-321-1111

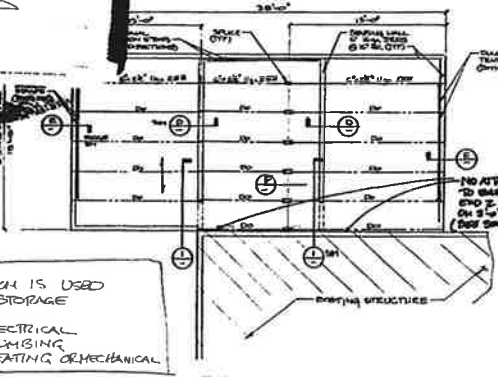
PROJECT: FOUNDATION & FRAMING  
 DRAWING NO.: 100-100-100-100  
 DATE: 10/10/10

1. FOUNDATION PLAN  
 2. FRAMING PLAN  
 3. SECTION  
 4. THICKENED SLAB  
 5. THICKENED EDGE  
 6. BRG DETAIL  
 7. EXT BRG DETAIL  
 8. SPLICE DETAIL

1. FOUNDATION PLAN  
 2. FRAMING PLAN  
 3. SECTION  
 4. THICKENED SLAB  
 5. THICKENED EDGE  
 6. BRG DETAIL  
 7. EXT BRG DETAIL  
 8. SPLICE DETAIL

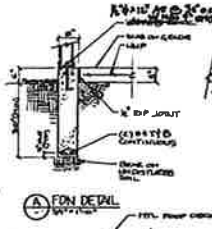


FOUNDATION PLAN

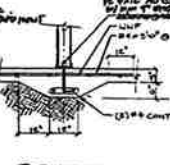


FRAMING PLAN

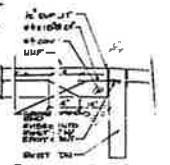
ADDITION IS USED FOR STORAGE  
 NO ELECTRICAL  
 NO PLUMBING  
 NO HEATING OR MECHANICAL



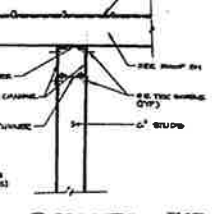
FOUNDATION DETAIL



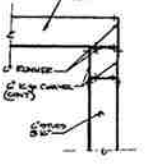
THICKENED SLAB



THICKENED EDGE



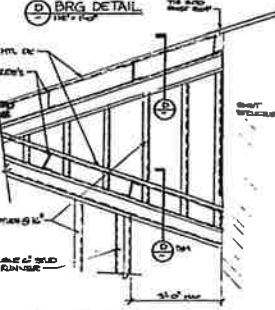
BRG DETAIL



EXT BRG DETAIL



SPLICE DETAIL



SECTION

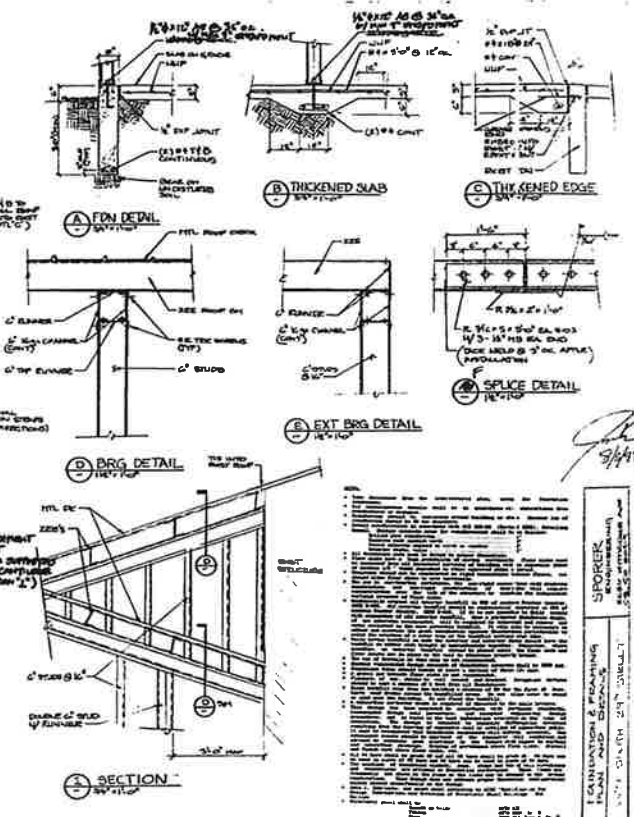
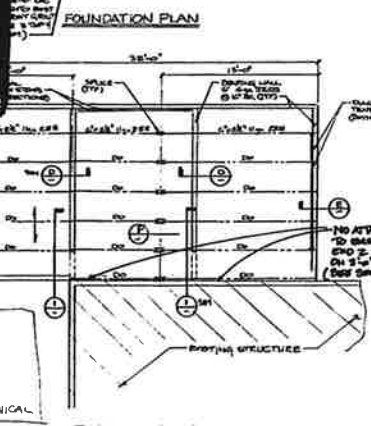
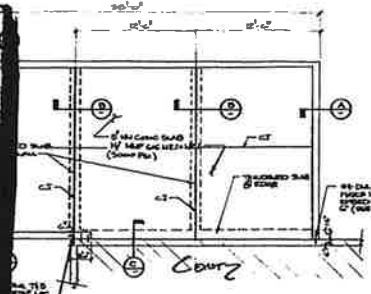
1. FOUNDATION PLAN  
 2. FRAMING PLAN  
 3. SECTION  
 4. THICKENED SLAB  
 5. THICKENED EDGE  
 6. BRG DETAIL  
 7. EXT BRG DETAIL  
 8. SPLICE DETAIL

FOUNDATION & FRAMING  
 PLAN AND BEAMS  
 SPORER ENGINEERING  
 303 LAUREL AVE.  
 CHICAGO, ILL. 60608  
 TEL. 312-321-1111  
 FAX 312-321-1111

**SPORER ENGINEERING**  
 201 LINDEN ST. S.W.  
 CORVALLIS, ORE. 97331  
 TEL. 325-4111

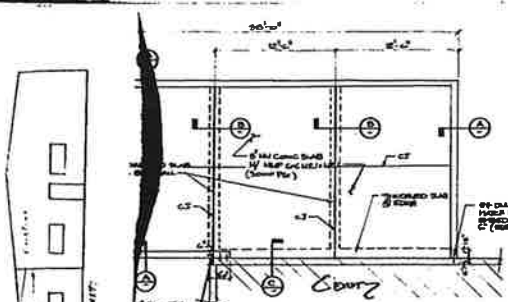
PROJECT: [unclear]  
 SHEET: [unclear]

$A_{10} = 2.71 \times 2.71 = 7.35 \text{ sq ft}$   
 $C = 2.71 \times 2.71 = 7.35 \text{ sq ft}$   
 $C_2 = 2.71 \times 2.71 = 7.35 \text{ sq ft}$   
 $C_3 = 2.71 \times 2.71 = 7.35 \text{ sq ft}$   
 $C_4 = 2.71 \times 2.71 = 7.35 \text{ sq ft}$   
 $C_5 = 2.71 \times 2.71 = 7.35 \text{ sq ft}$   
 $C_6 = 2.71 \times 2.71 = 7.35 \text{ sq ft}$   
 $C_7 = 2.71 \times 2.71 = 7.35 \text{ sq ft}$   
 $C_8 = 2.71 \times 2.71 = 7.35 \text{ sq ft}$   
 $C_9 = 2.71 \times 2.71 = 7.35 \text{ sq ft}$   
 $C_{10} = 2.71 \times 2.71 = 7.35 \text{ sq ft}$   
 $C_{11} = 2.71 \times 2.71 = 7.35 \text{ sq ft}$   
 $C_{12} = 2.71 \times 2.71 = 7.35 \text{ sq ft}$   
 $C_{13} = 2.71 \times 2.71 = 7.35 \text{ sq ft}$   
 $C_{14} = 2.71 \times 2.71 = 7.35 \text{ sq ft}$   
 $C_{15} = 2.71 \times 2.71 = 7.35 \text{ sq ft}$   
 $C_{16} = 2.71 \times 2.71 = 7.35 \text{ sq ft}$   
 $C_{17} = 2.71 \times 2.71 = 7.35 \text{ sq ft}$   
 $C_{18} = 2.71 \times 2.71 = 7.35 \text{ sq ft}$   
 $C_{19} = 2.71 \times 2.71 = 7.35 \text{ sq ft}$   
 $C_{20} = 2.71 \times 2.71 = 7.35 \text{ sq ft}$   
 $C_{21} = 2.71 \times 2.71 = 7.35 \text{ sq ft}$   
 $C_{22} = 2.71 \times 2.71 = 7.35 \text{ sq ft}$   
 $C_{23} = 2.71 \times 2.71 = 7.35 \text{ sq ft}$   
 $C_{24} = 2.71 \times 2.71 = 7.35 \text{ sq ft}$   
 $C_{25} = 2.71 \times 2.71 = 7.35 \text{ sq ft}$   
 $C_{26} = 2.71 \times 2.71 = 7.35 \text{ sq ft}$   
 $C_{27} = 2.71 \times 2.71 = 7.35 \text{ sq ft}$   
 $C_{28} = 2.71 \times 2.71 = 7.35 \text{ sq ft}$   
 $C_{29} = 2.71 \times 2.71 = 7.35 \text{ sq ft}$   
 $C_{30} = 2.71 \times 2.71 = 7.35 \text{ sq ft}$   
 $C_{31} = 2.71 \times 2.71 = 7.35 \text{ sq ft}$   
 $C_{32} = 2.71 \times 2.71 = 7.35 \text{ sq ft}$   
 $C_{33} = 2.71 \times 2.71 = 7.35 \text{ sq ft}$   
 $C_{34} = 2.71 \times 2.71 = 7.35 \text{ sq ft}$   
 $C_{35} = 2.71 \times 2.71 = 7.35 \text{ sq ft}$   
 $C_{36} = 2.71 \times 2.71 = 7.35 \text{ sq ft}$   
 $C_{37} = 2.71 \times 2.71 = 7.35 \text{ sq ft}$   
 $C_{38} = 2.71 \times 2.71 = 7.35 \text{ sq ft}$   
 $C_{39} = 2.71 \times 2.71 = 7.35 \text{ sq ft}$   
 $C_{40} = 2.71 \times 2.71 = 7.35 \text{ sq ft}$   
 $C_{41} = 2.71 \times 2.71 = 7.35 \text{ sq ft}$   
 $C_{42} = 2.71 \times 2.71 = 7.35 \text{ sq ft}$   
 $C_{43} = 2.71 \times 2.71 = 7.35 \text{ sq ft}$   
 $C_{44} = 2.71 \times 2.71 = 7.35 \text{ sq ft}$   
 $C_{45} = 2.71 \times 2.71 = 7.35 \text{ sq ft}$   
 $C_{46} = 2.71 \times 2.71 = 7.35 \text{ sq ft}$   
 $C_{47} = 2.71 \times 2.71 = 7.35 \text{ sq ft}$   
 $C_{48} = 2.71 \times 2.71 = 7.35 \text{ sq ft}$   
 $C_{49} = 2.71 \times 2.71 = 7.35 \text{ sq ft}$   
 $C_{50} = 2.71 \times 2.71 = 7.35 \text{ sq ft}$   
 $C_{51} = 2.71 \times 2.71 = 7.35 \text{ sq ft}$   
 $C_{52} = 2.71 \times 2.71 = 7.35 \text{ sq ft}$   
 $C_{53} = 2.71 \times 2.71 = 7.35 \text{ sq ft}$   
 $C_{54} = 2.71 \times 2.71 = 7.35 \text{ sq ft}$   
 $C_{55} = 2.71 \times 2.71 = 7.35 \text{ sq ft}$   
 $C_{56} = 2.71 \times 2.71 = 7.35 \text{ sq ft}$   
 $C_{57} = 2.71 \times 2.71 = 7.35 \text{ sq ft}$   
 $C_{58} = 2.71 \times 2.71 = 7.35 \text{ sq ft}$   
 $C_{59} = 2.71 \times 2.71 = 7.35 \text{ sq ft}$   
 $C_{60} = 2.71 \times 2.71 = 7.35 \text{ sq ft}$   
 $C_{61} = 2.71 \times 2.71 = 7.35 \text{ sq ft}$   
 $C_{62} = 2.71 \times 2.71 = 7.35 \text{ sq ft}$   
 $C_{63} = 2.71 \times 2.71 = 7.35 \text{ sq ft}$   
 $C_{64} = 2.71 \times 2.71 = 7.35 \text{ sq ft}$   
 $C_{65} = 2.71 \times 2.71 = 7.35 \text{ sq ft}$   
 $C_{66} = 2.71 \times 2.71 = 7.35 \text{ sq ft}$   
 $C_{67} = 2.71 \times 2.71 = 7.35 \text{ sq ft}$   
 $C_{68} = 2.71 \times 2.71 = 7.35 \text{ sq ft}$   
 $C_{69} = 2.71 \times 2.71 = 7.35 \text{ sq ft}$   
 $C_{70} = 2.71 \times 2.71 = 7.35 \text{ sq ft}$   
 $C_{71} = 2.71 \times 2.71 = 7.35 \text{ sq ft}$   
 $C_{72} = 2.71 \times 2.71 = 7.35 \text{ sq ft}$   
 $C_{73} = 2.71 \times 2.71 = 7.35 \text{ sq ft}$   
 $C_{74} = 2.71 \times 2.71 = 7.35 \text{ sq ft}$   
 $C_{75} = 2.71 \times 2.71 = 7.35 \text{ sq ft}$   
 $C_{76} = 2.71 \times 2.71 = 7.35 \text{ sq ft}$   
 $C_{77} = 2.71 \times 2.71 = 7.35 \text{ sq ft}$   
 $C_{78} = 2.71 \times 2.71 = 7.35 \text{ sq ft}$   
 $C_{79} = 2.71 \times 2.71 = 7.35 \text{ sq ft}$   
 $C_{80} = 2.71 \times 2.71 = 7.35 \text{ sq ft}$   
 $C_{81} = 2.71 \times 2.71 = 7.35 \text{ sq ft}$   
 $C_{82} = 2.71 \times 2.71 = 7.35 \text{ sq ft}$   
 $C_{83} = 2.71 \times 2.71 = 7.35 \text{ sq ft}$   
 $C_{84} = 2.71 \times 2.71 = 7.35 \text{ sq ft}$   
 $C_{85} = 2.71 \times 2.71 = 7.35 \text{ sq ft}$   
 $C_{86} = 2.71 \times 2.71 = 7.35 \text{ sq ft}$   
 $C_{87} = 2.71 \times 2.71 = 7.35 \text{ sq ft}$   
 $C_{88} = 2.71 \times 2.71 = 7.35 \text{ sq ft}$   
 $C_{89} = 2.71 \times 2.71 = 7.35 \text{ sq ft}$   
 $C_{90} = 2.71 \times 2.71 = 7.35 \text{ sq ft}$   
 $C_{91} = 2.71 \times 2.71 = 7.35 \text{ sq ft}$   
 $C_{92} = 2.71 \times 2.71 = 7.35 \text{ sq ft}$   
 $C_{93} = 2.71 \times 2.71 = 7.35 \text{ sq ft}$   
 $C_{94} = 2.71 \times 2.71 = 7.35 \text{ sq ft}$   
 $C_{95} = 2.71 \times 2.71 = 7.35 \text{ sq ft}$   
 $C_{96} = 2.71 \times 2.71 = 7.35 \text{ sq ft}$   
 $C_{97} = 2.71 \times 2.71 = 7.35 \text{ sq ft}$   
 $C_{98} = 2.71 \times 2.71 = 7.35 \text{ sq ft}$   
 $C_{99} = 2.71 \times 2.71 = 7.35 \text{ sq ft}$   
 $C_{100} = 2.71 \times 2.71 = 7.35 \text{ sq ft}$



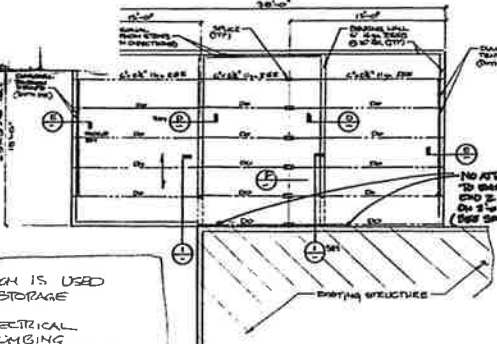
SPORER ENGINEERING  
 201 LINDEN ST. S.W.  
 CORVALLIS, ORE. 97331  
 TEL. 325-4111

SPORER  
 FOUNDATION & FRAMING  
 PLAN AND SECTION  
 3/4/99

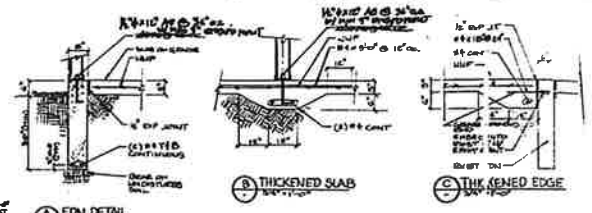


**FOUNDATION PLAN**

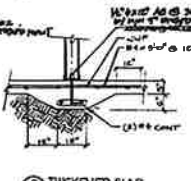
ADDITION IS USED FOR STORAGE  
 NO ELECTRICAL  
 NO PLUMBING  
 NO HEATING OR MECHANICAL



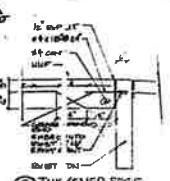
**FRAMING PLAN**



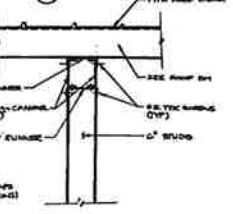
**A) FDN DETAIL**



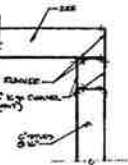
**B) THICKENED SLAB**



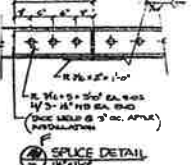
**C) THICK EDGED**



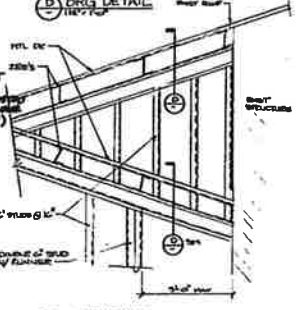
**D) BRG DETAIL**



**E) EXT BRG DETAIL**



**SPLICE DETAIL**

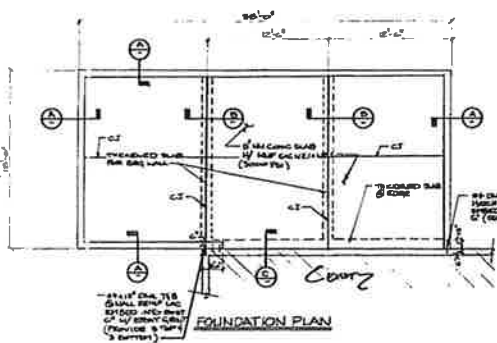


**SECTION**

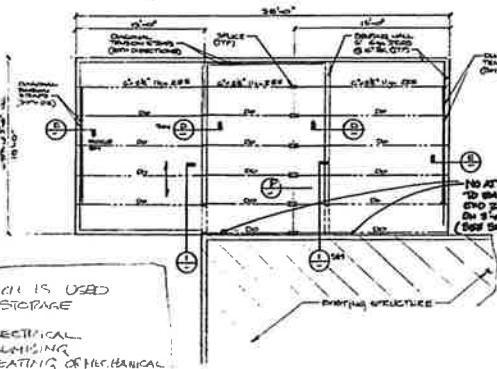
REVISIONS

NO.	DESCRIPTION	DATE
1	ISSUED FOR PERMITS	3/1/78
2	REVISIONS AS SHOWN	3/1/78
3	REVISIONS AS SHOWN	3/1/78
4	REVISIONS AS SHOWN	3/1/78
5	REVISIONS AS SHOWN	3/1/78
6	REVISIONS AS SHOWN	3/1/78
7	REVISIONS AS SHOWN	3/1/78
8	REVISIONS AS SHOWN	3/1/78
9	REVISIONS AS SHOWN	3/1/78
10	REVISIONS AS SHOWN	3/1/78
11	REVISIONS AS SHOWN	3/1/78
12	REVISIONS AS SHOWN	3/1/78
13	REVISIONS AS SHOWN	3/1/78
14	REVISIONS AS SHOWN	3/1/78
15	REVISIONS AS SHOWN	3/1/78
16	REVISIONS AS SHOWN	3/1/78
17	REVISIONS AS SHOWN	3/1/78
18	REVISIONS AS SHOWN	3/1/78
19	REVISIONS AS SHOWN	3/1/78
20	REVISIONS AS SHOWN	3/1/78
21	REVISIONS AS SHOWN	3/1/78
22	REVISIONS AS SHOWN	3/1/78
23	REVISIONS AS SHOWN	3/1/78
24	REVISIONS AS SHOWN	3/1/78
25	REVISIONS AS SHOWN	3/1/78
26	REVISIONS AS SHOWN	3/1/78
27	REVISIONS AS SHOWN	3/1/78
28	REVISIONS AS SHOWN	3/1/78
29	REVISIONS AS SHOWN	3/1/78
30	REVISIONS AS SHOWN	3/1/78

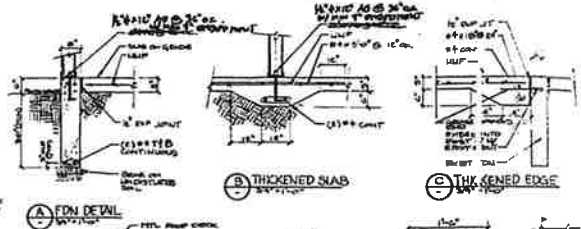
**SPOKER**  
 CIVIL ENGINEER  
 LICENSE NO. 12345  
 STATE OF TEXAS



FOUNDATION PLAN



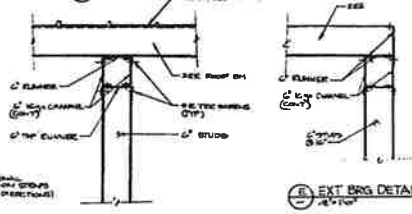
FRAMING PLAN



A) FDN DETAIL

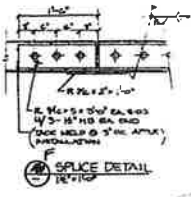
B) THICKENED SLAB

C) THICKENED EDGE

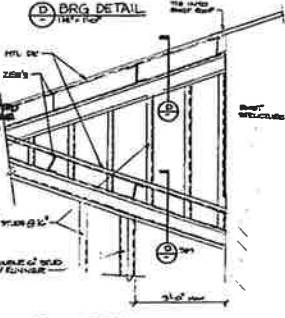


D) BRG DETAIL

E) EXT BRG DETAIL



F) SPLICE DETAIL



SECTION

Table with multiple columns and rows of technical specifications and notes, including material specifications and construction details.

SPRINKLER  
FRAMES AND BEAMS  
...  
...  
...