

# RV STORAGE PROJECT TAMLIN ROAD

5080 TAMLIN ROAD

LOCATED IN SECTION 21, TOWNSHIP 13S, RANGE 65W OF THE 6TH P.M.,  
COUNTY OF EL PASO, STATE OF COLORADO

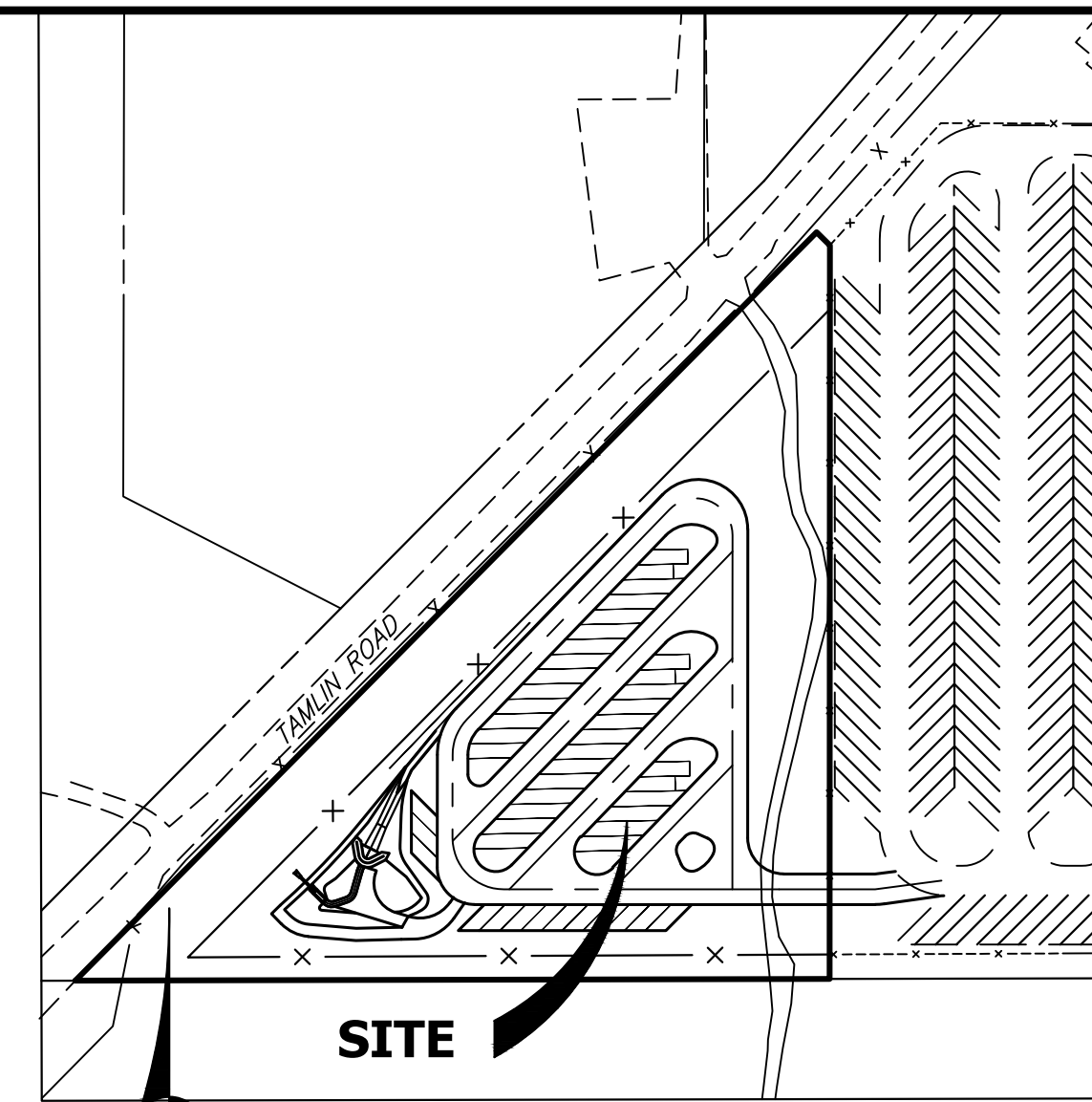
## LIGHTING PLAN

### LIGHTING SCHEDULE

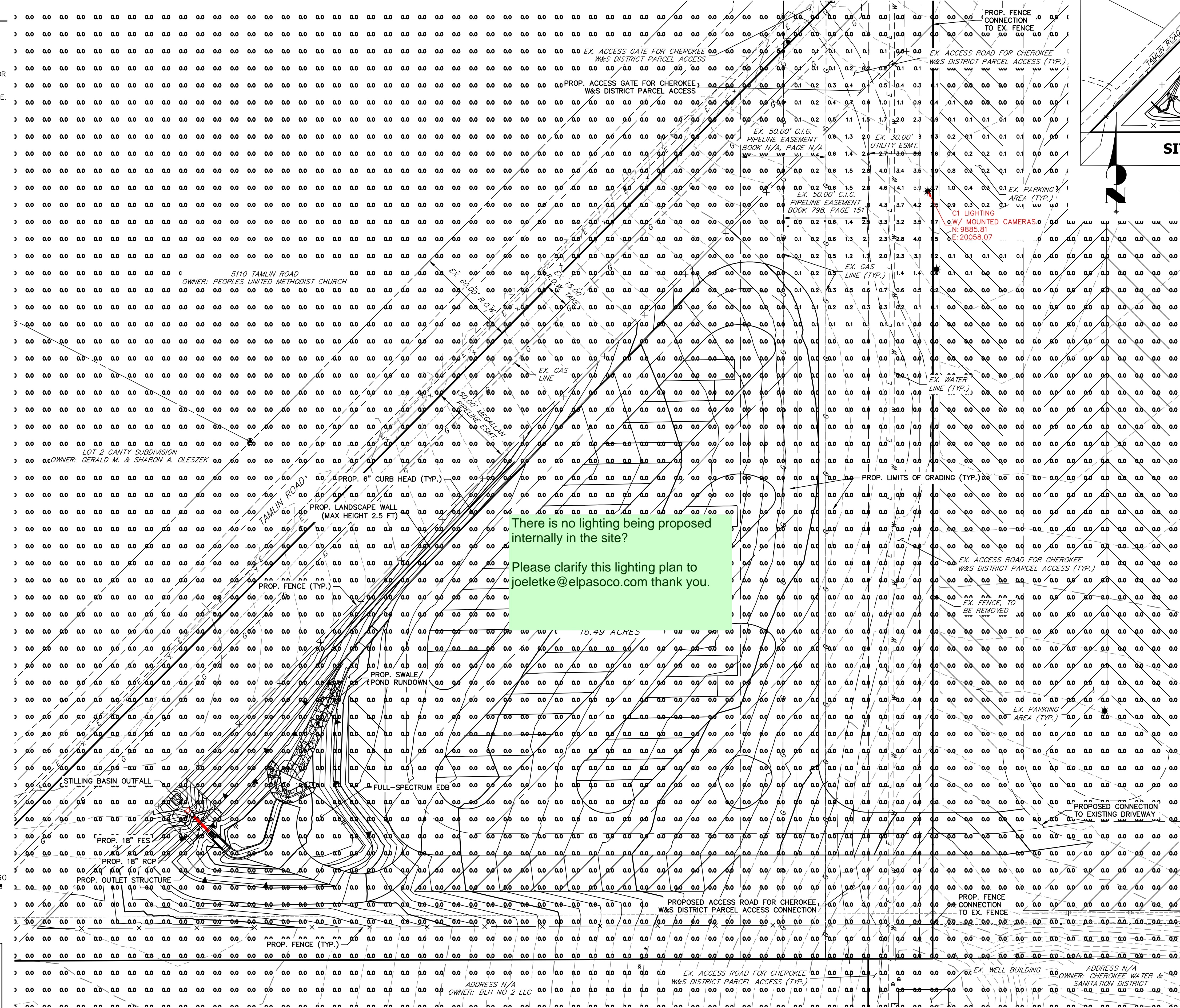
SYMBOL	LABEL (1)	QTY	BRAND	WATTS	DISTRIBUTION	LUMEN OUTPUT	MANUFACTURER	CATALOG NUMBER
C1		1	Gleon	225	TYPE V SHORT	24,391	McGraw-Edison	GLEON-AF-03-LED-E1-14W

### NOTES

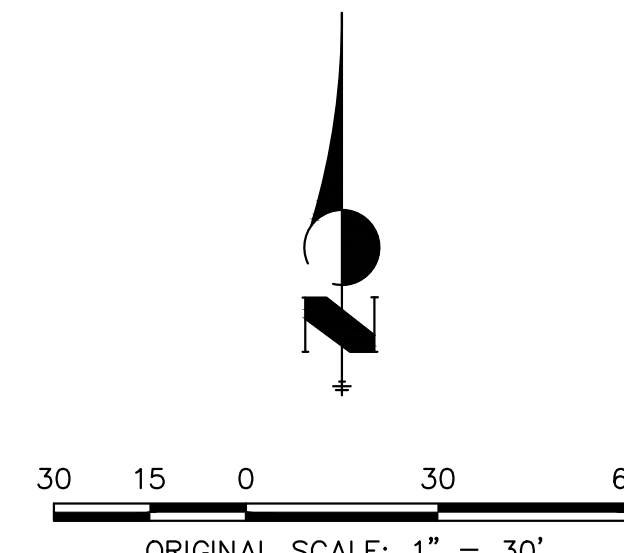
- VALUES SHOWN ARE HORIZONTAL ILLUMINANCE VALUES IN FOOT-CANDELES (FC) MEASURED AT GRADE.
- ANY PROPOSED LIGHT FIXTURES INSTALLED ON PRIVATE PROPERTY, ADJACENT TO THE PUBLIC ROW, SHALL BE ORIENTED IN SUCH A MANNER OR LIMITED IN LUMEN OUTPUT TO PREVENT GLARE PROBLEMS AND SHALL NOT EXCEED NATIONAL I.E.S. LIGHTING STANDARDS FOR DISABILITY GLARE.



KEY MAP  
SCALE: 1"=150'



There is no lighting being proposed internally in the site?  
Please clarify this lighting plan to [joeletke@elpasoco.com](mailto:joeletke@elpasoco.com) thank you.



THE LOCATIONS OF EXISTING ABOVE GROUND AND UNDERGROUND UTILITIES ARE SHOWN IN AN APPROXIMATE WAY ONLY. THE CONTRACTOR SHALL DETERMINE THE EXACT LOCATION OF ALL EXISTING UTILITIES BEFORE COMMENCING WORK. THE CONTRACTOR SHALL BE FULLY RESPONSIBLE FOR ANY AND ALL DAMAGES WHICH MIGHT BE CAUSED BY HIS FAILURE TO EXACTLY LOCATE AND PRESERVE ANY AND ALL ABOVE GROUND AND UNDERGROUND UTILITIES.

UNTIL SUCH TIME AS THESE DRAWINGS ARE APPROVED BY THE APPROPRIATE REVIEWING AGENCIES, OR ENGINEERING APPROVES THEIR USE, THESE DRAWINGS ARE DESIGNATED BY WRITTEN AUTHORIZATION.

PREPARED FOR  
**TAMLIN STORAGE LLC**  
57 NEWPORT CIRCLE UNIT B  
COLORADO SPRINGS, CO 80906  
PARKER SAMELSON  
(719) 659-7126

**J.R. ENGINEERING**  
A Wehrman Company  
Central 303-740-9888 • Colorado Springs 719-583-2693  
Fort Collins 970-491-9888 • [www.jrengineering.com](http://www.jrengineering.com)

BY	DATE	REVISION

H-SCALE	V-SCALE	DATE	DESIGNED BY	DRAWN BY	CHECKED BY
1"=30'	N/A	09/17/24	PAL	PAL	

RV STORAGE PROJECT  
TAMLIN ROAD  
LIGHTING PLAN

SHEET 1 OF 2  
JOB NO. 25305.00

811  
Know what's below.  
Call before you dig.

