

# RV STORAGE PROJECT TAMLIN ROAD

## 5080 TAMLIN ROAD

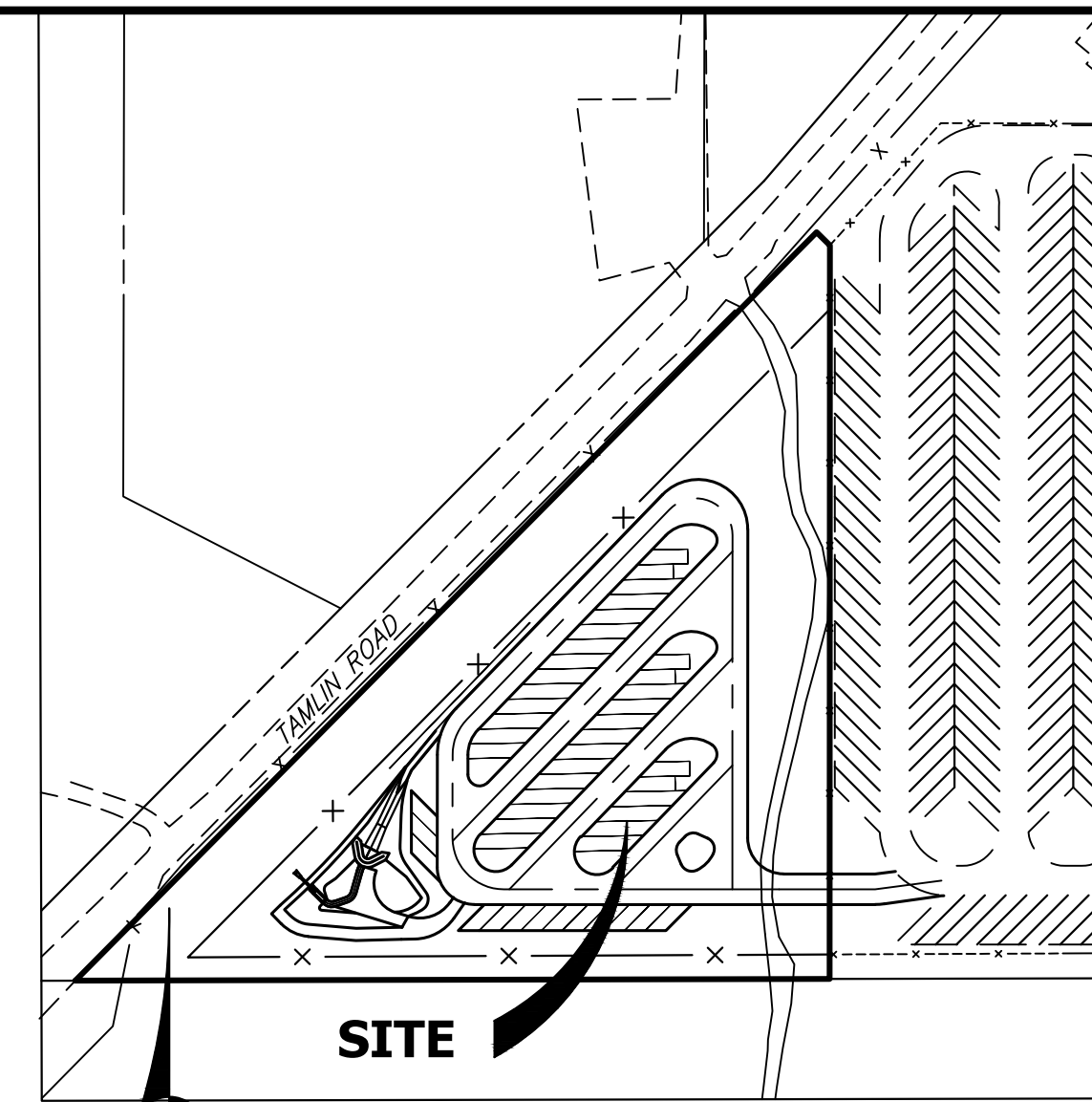
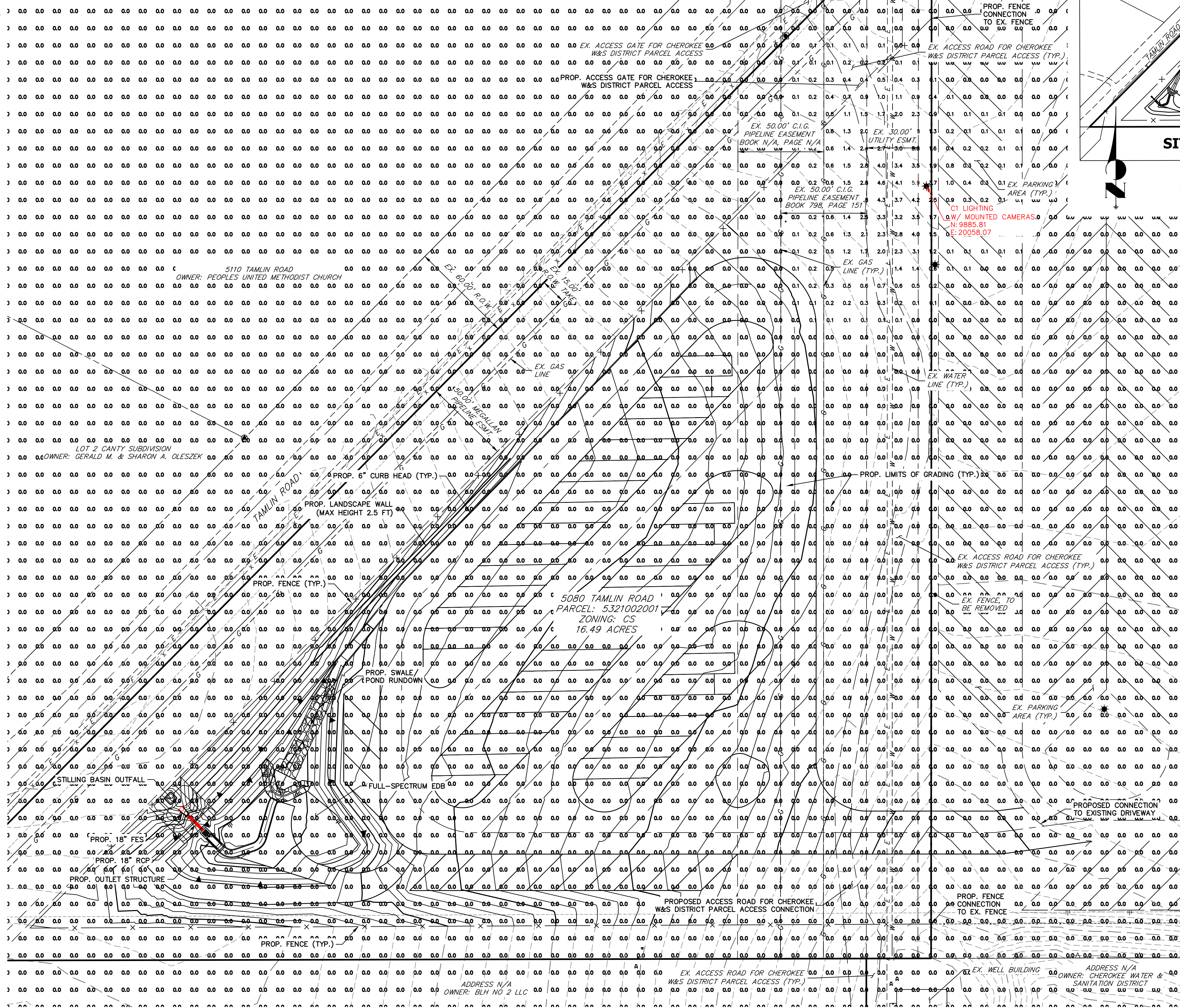
### LOCATED IN SECTION 21, TOWNSHIP 13S, RANGE 65W OF THE 6TH P.M., COUNTY OF EL PASO, STATE OF COLORADO

# LIGHTING PLAN

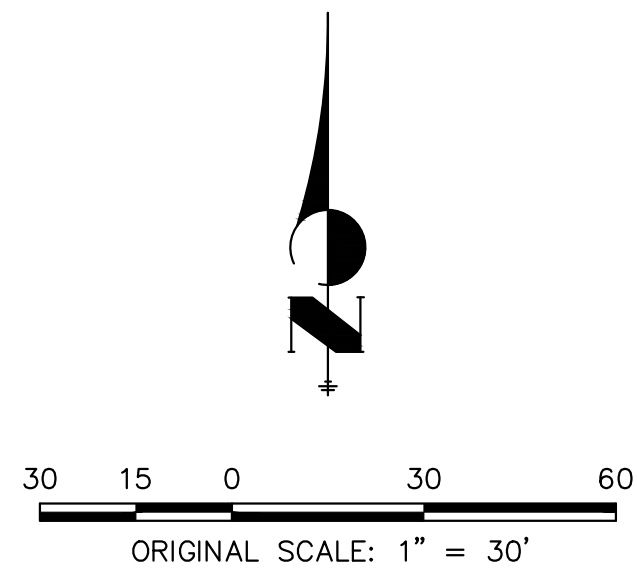
LIGHTING SCHEDULE								
SYMBOL	LABEL (1)	QTY	BRAND	WATTS	DISTRIBUTION	LUMEN OUTPUT	MANUFACTURER	CATALOG NUMBER
	C1	1	Gleon	225	TYPE V SHORT	24,391	McGraw-Edison	GLEON-AF-03-LED-E1-T4W

**NOTES**

1. VALUES SHOWN ARE HORIZONTAL ILLUMINANCE VALUES IN FOOT-CANDLES (FC) MEASURED AT GRADE.
2. ANY PROPOSED LIGHT FIXTURES INSTALLED ON PRIVATE PROPERTY, ADJACENT TO THE PUBLIC ROW, SHALL BE ORIENTED IN SUCH A MANNER OR LIMITED IN LUMEN OUTPUT TO PREVENT GLARE PROBLEMS AND SHALL NOT EXCEED NATIONAL I.E.S. LIGHTING STANDARDS FOR DISABILITY GLARE.



**KEY MAP**  
SCALE: 1"=150'



THE LOCATIONS OF EXISTING ABOVE GROUND AND UNDERGROUND UTILITIES ARE SHOWN IN AN APPROXIMATE WAY ONLY. THE CONTRACTOR SHALL DETERMINE THE EXACT LOCATION OF ALL EXISTING UTILITIES BEFORE COMMENCING WORK. THE CONTRACTOR SHALL BE FULLY RESPONSIBLE FOR ANY AND ALL DAMAGES WHICH MIGHT BE CAUSED BY HIS FAILURE TO EXACTLY LOCATE AND PRESERVE ANY AND ALL ABOVE GROUND AND UNDERGROUND UTILITIES.

UNTIL SUCH TIME AS THESE DRAWINGS ARE APPROVED BY THE APPROPRIATE REVIEWING AGENCIES, OR ENGINEERING APPROVES THEIR USE, THESE DRAWINGS ARE DESIGNATED BY WRITTEN AUTHORIZATION.  
 PREPARED FOR  
**TAMLIN STORAGE LLC**  
 57 NEWPORT CIRCLE UNIT B  
 COLORADO SPRINGS, CO 80906  
 PARKER SAMELSON  
 (719) 659-7126

**J.R. ENGINEERING**  
 A Westman Company  
 Centennial 300-740-9888 • Colorado Springs 719-583-2593  
 Fort Collins 970-491-9888 • www.jrengineering.com

No.	REVISION	BY	DATE

H-SCALE	1"=30'	V-SCALE	N/A	DATE	09/17/24	DESIGNED BY	PAL	DRAWN BY	PAL	CHECKED BY	
---------	--------	---------	-----	------	----------	-------------	-----	----------	-----	------------	--



Know what's below.  
Call before you dig.

RV STORAGE PROJECT  
 TAMLIN ROAD  
 LIGHTING PLAN

