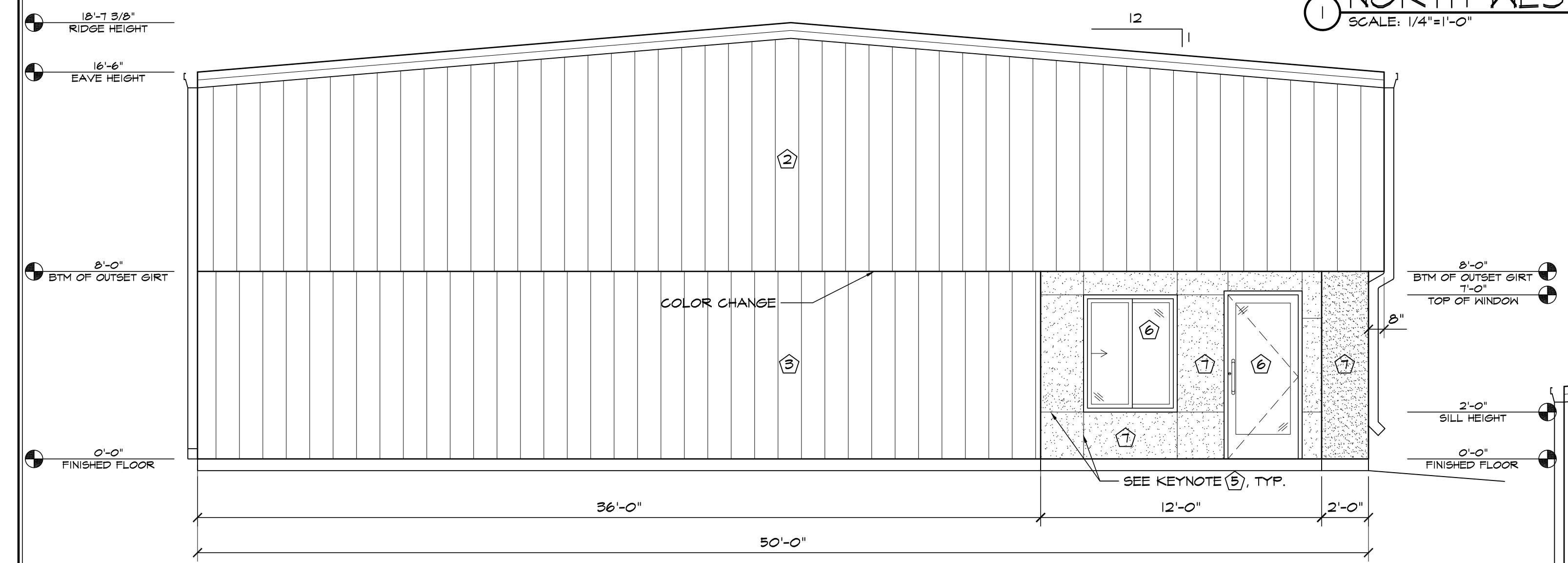
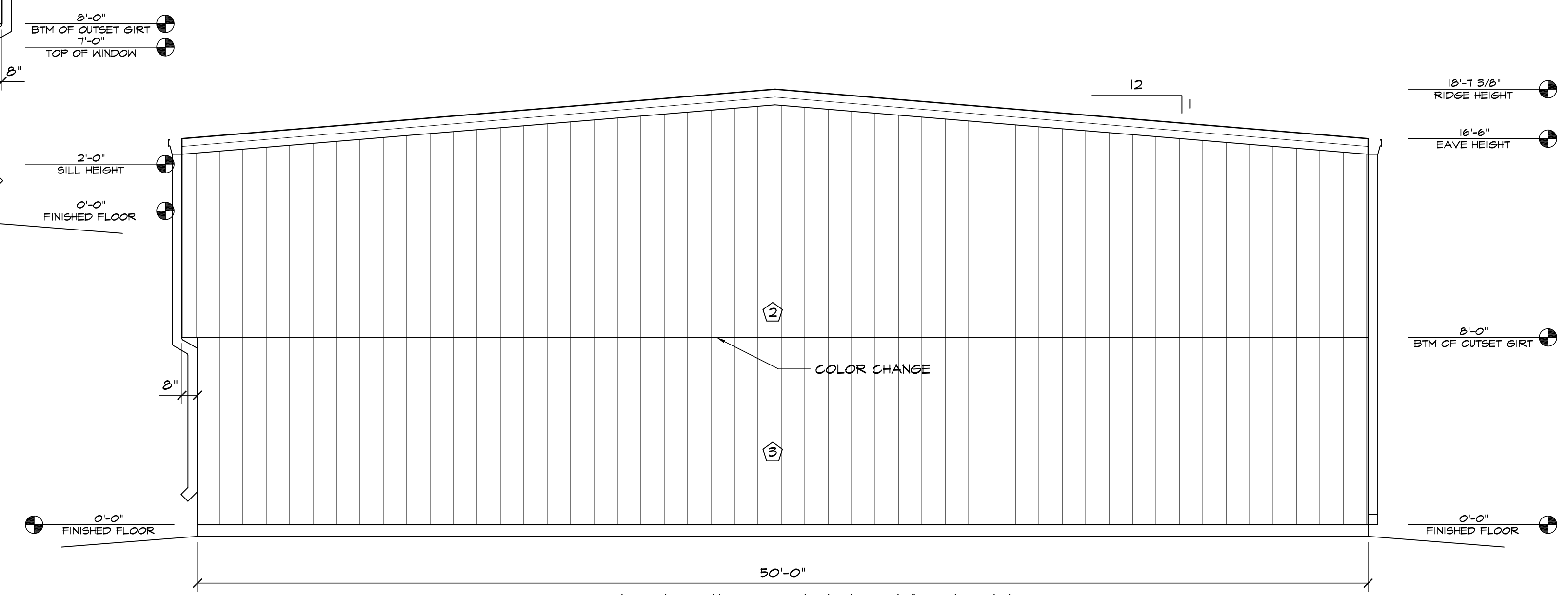


1 NORTH-WEST ELEVATION
SCALE: 1/4"=1'-0"

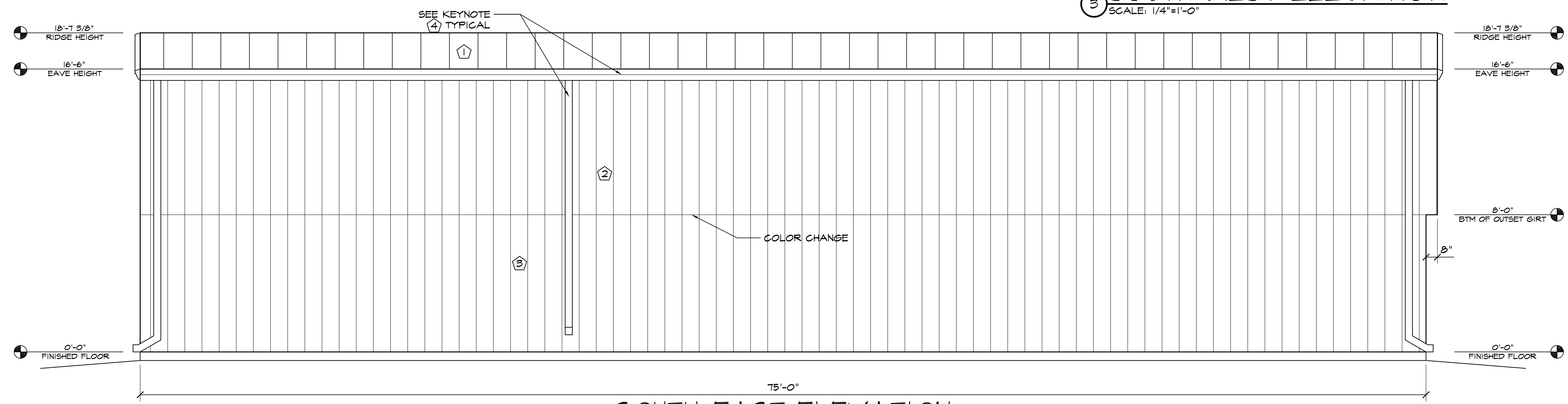
ELEVATION KEY NOTES			
1	PREFINISHED 24 GA. "PBR" METAL ROOF PANELS BY METAL BUILDING PROVIDER	4	PREFINISHED GUTTER & DOWNSPOUTS BY METAL BUILDING PROVIDER
2	PREFINISHED 26 GA. "PBR" METAL WALL PANELS BY METAL BUILDING PROVIDER	5	WALL PACK LIGHT - TOP OF LIGHT @ 15'-6" A.F.F.
3	PREFINISHED 26 GA. "PBR" METAL WALL PANELS BY METAL BUILDING PROVIDER	6	SEE SCHEDULES ON A4.1 FOR ALL DOOR & WINDOW INFORMATION
	COLOR - TO BE DETERMINED	7	3/4" STUCCO FINISH SYS., EXPANSION JOINT - 120 SF MAX AREA



2 NORTH-EAST ELEVATION
SCALE: 1/4"=1'-0"



3 SOUTH-WEST ELEVATION
SCALE: 1/4"=1'-0"



4 SOUTH-EAST ELEVATION
SCALE: 1/4"=1'-0"

HAMMERS
CONSTRUCTION INC.

COMMERCIAL GENERAL CONTRACTORS SPECIALIZING IN DESIGN/BUILD
PRESIDENT: STEVE R. HAMMERS
VICE PRES: DAVID J. HAMMERS
1411 WOOLSEY HEIGHTS
COLORADO SPRINGS, CO 80915
(719) 570-1599 FAX (719) 570-7008
www.hammersconstruction.com

THIS DRAWING CONTAINS MATERIAL & INFORMATION WHICH MAY NOT BE REPRODUCED WITHOUT WRITTEN CONSENT OF HAMMERS CONSTRUCTION, INC. THESE DRAWINGS ARE INTENDED TO BE USED ONLY BY HAMMERS CONSTRUCTION & ITS REPRESENTATIVES. THESE DRAWINGS HAVE NOT BEEN PREPARED FOR ANY OTHER PURPOSE THAN TO INDICATE THE GENERAL FEATURES AND PLACEMENT OF THE PROPOSED PROJECT. COPYRIGHT © 2017 HAMMERS CONSTRUCTION

CRACKERJACK
C/P 2-2

7315 McCLAIN PT
COLORADO SPRINGS, CO 80915
EL PASO COUNTY, COLORADO

DATE: JUNE 28, 2017
DRAWN BY: D. AQUINO
PROJ. MNGR: Y. DYACHENKO
SCALE: SEE PLAN
APPROVED BY:
JOB NO: 1027

△	RESUBMITTALS:
△	10/02/17 - FINAL SUBMITTAL
△	
△	
△	
△	