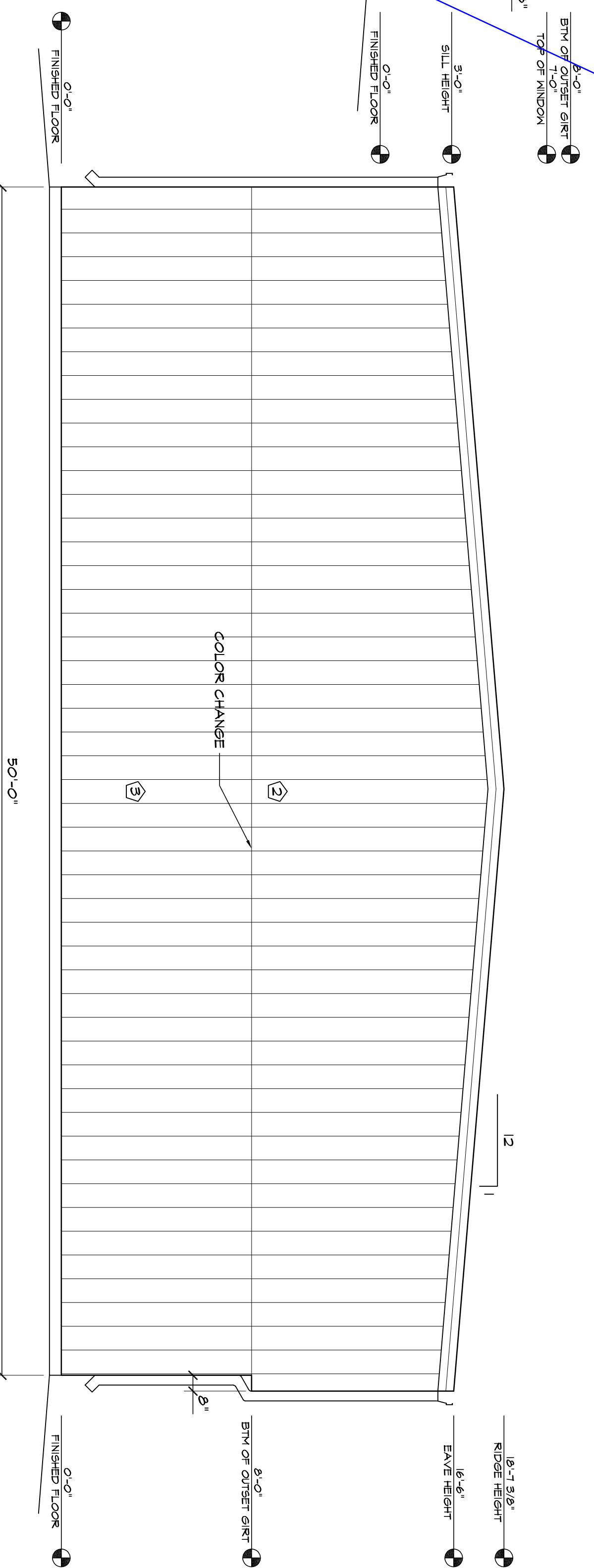


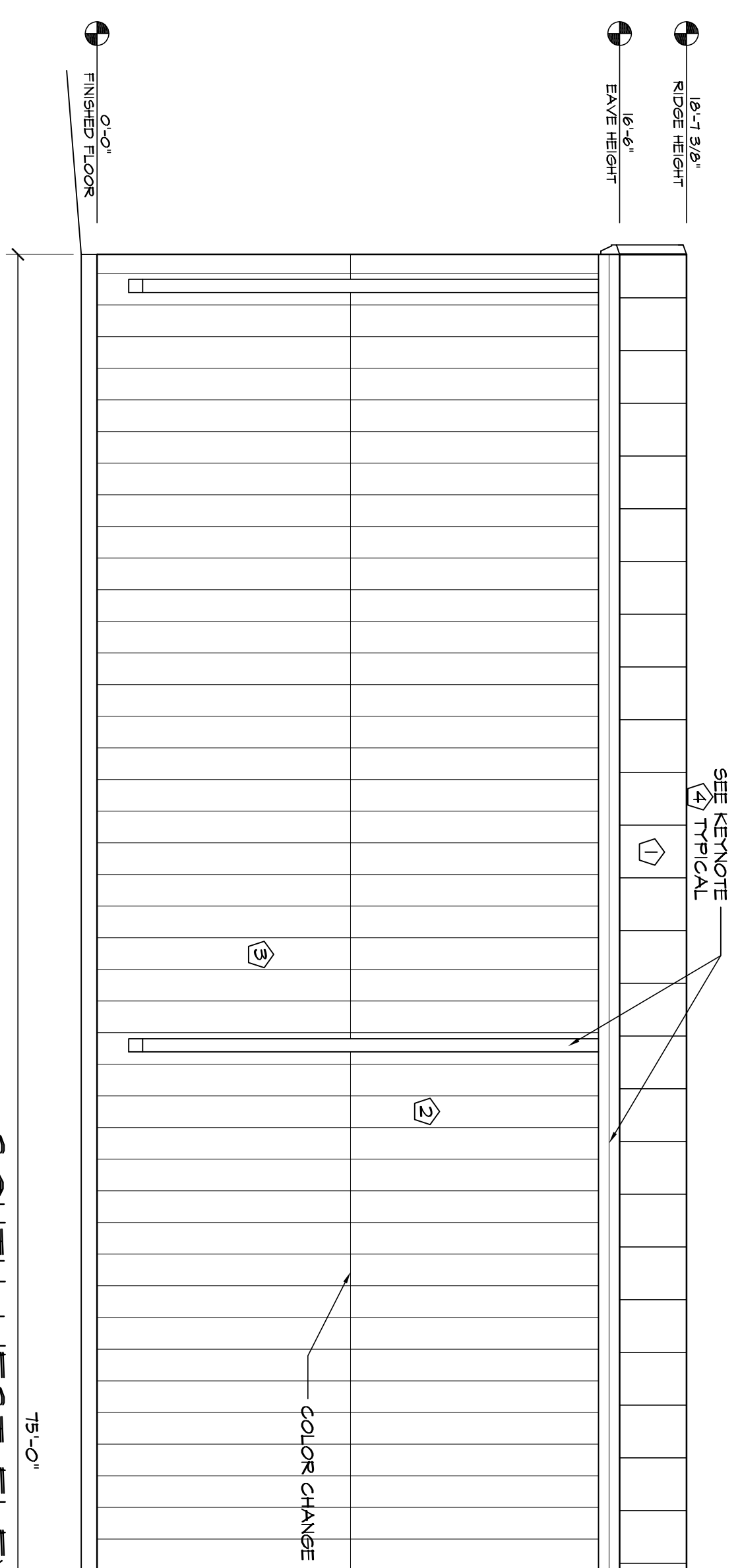
1 NORTH-EAST ELEVATION
SCALE: 1/4"=1'-0"



2 NORTH-WEST ELEVATION
SCALE: 1/4"=1'-0"



3 SOUTH-EAST ELEVATION
SCALE: 1/4"=1'-0"



4 SOUTH-WEST ELEVATION
SCALE: 1/4"=1'-0"

ELEVATION KEY NOTES

1	PREFINISHED 24 GA. IPBR METAL ROOF PANELS BY METAL BUILDING PROVIDER	4	PREFINISHED GUTTER & DOWNSPOUTS BY METAL BUILDING PROVIDER
2	PREFINISHED 26 GA. IPBR METAL WALL PANELS BY METAL BUILDING PROVIDER	5	MALL PACK LIGHT - TOP OF LIGHT @ 15'-6" A.F.F.
3	COLOR - TO BE DETERMINED	6	SEE SCHEDULES ON A41 FOR ALL DOOR & WINDOW INFORMATION
7	PREFINISHED 26 GA. IPBR METAL WALL PANELS BY METAL BUILDING PROVIDER	17	5/4" STUCCO FINISH STS. EXPANSION JOINT - 120 SF MAX AREA

Vice Versa

Vice Versa

HAMMERS CONSTRUCTION INC.
COMMERCIAL GENERAL CONTRACTORS SPECIALIZING IN DESIGN/BUILD

PRESIDENT: STEVE R. HAMMERS
VICE PRES: DAVID J. HAMMERS
1411 WOOLSEY HEIGHTS
COLORADO SPRINGS, CO 80915
(719) 570-1599 FAX (719) 570-7008
www.hammersconstruction.com

THE DRAWING CONTAINS MATERIAL & INFORMATION WHICH MAY NOT BE REPRODUCED WITHOUT WRITTEN PERMISSION OF CRACKERJACK CONSTRUCTION, INC. THESE DRAWINGS ARE INTENDED FOR CONSTRUCTION ONLY. REPRESENTATIVES OF THESE DRAWINGS HAVE NOT BEEN OBLIGATED TO INDICATE THE GENERAL PLANNING AND FLASCOPI OF THE CONSTRUCTION OF THE PROJECT.

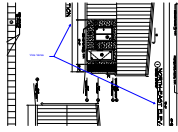
CRACKERJACK
GBP 21-2
7315 McCLAIN PT
COLORADO SPRINGS, CO 80915
EL PASO COUNTY, COLORADO

DATE: JUNE 28, 2017
DRAWN BY: J. AQUINO
PROJ. MGR: T. DYACHENKO
SCALE: SEE PLAN
APPROVED BY:
JOB NO: 1027

RESUBMITTALS:

Markup Summary

1 (2)



Subject: Callout

Vice Versa

Page Label: 1

Lock: Locked

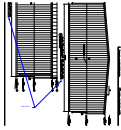
Status:

Checkmark: Unchecked

Author: dsdlaforce

Date: 7/31/2017 2:31:30 PM

Color: ■



Subject: Callout

Vice Versa

Page Label: 1

Lock: Locked

Status:

Checkmark: Unchecked

Author: dsdlaforce

Date: 7/31/2017 2:31:30 PM

Color: ■