

# 2290 OLD RANCH ROAD

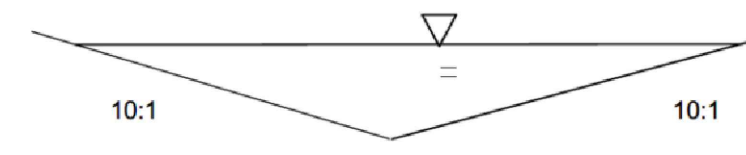
LOTS 8, BLOCK E, AMENDED FILING OF SPRINGS CREST SUBDIVISION  
NW 1/4, SEC. 28, T.12 S., R. 66 W OF THE 6TH P.M.  
COUNTY OF EL PASO, STATE OF COLORADO

## GRADING LEGEND

- DIRECTIONAL FLOW ARROW
- 6885- EXISTING CONTOUR
- 83 PROPOSED CONTOUR
- x85.3 PROPOSED SPOT ELEVATION
- ZONE AE FLOODPLAIN LIMITS FOR KETTLE CREEK - F.I.R.M. NO. 08041C0506G, DEC. 7, 2018

### Swale A1 - for Basins O1 + A1 flow - Grass-lined

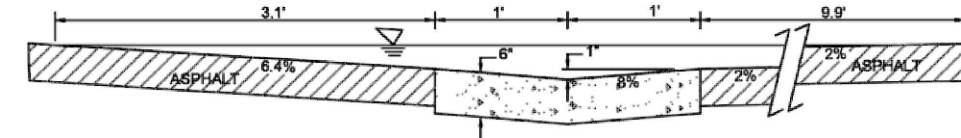
Q100 = 4.18 cfs       $Q = \frac{1.486AR^{2.33}}{n}$   
S = 2.1 %      n = 0.035



D = 0.44      N = 0.035      Q = 4.37 cfs  
A = 1.94 sf      V = 2.3 fps  
10 WP = 8.84 ft  
10 S = 0.021 %

### Swale B1 for Basin B1 - Concrete and Asphalt

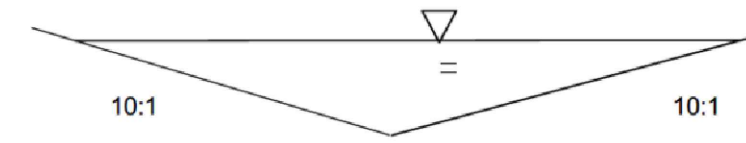
Q100 = 2.82 cfs       $Q = \frac{1.486AR^{2.33}}{n}$   
S = 0.7 %      n = 0.017



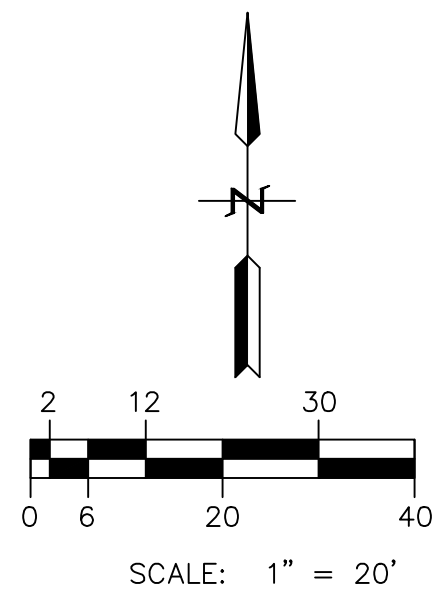
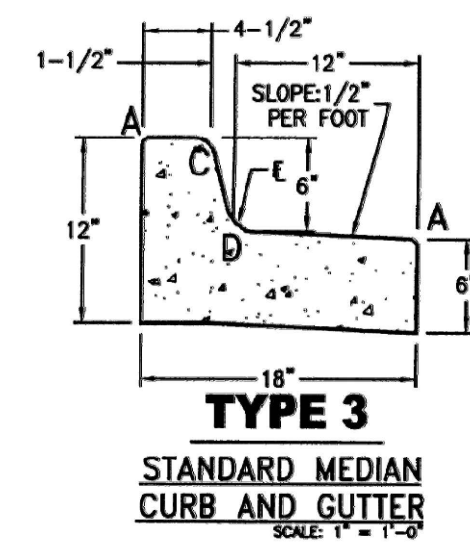
D = 0.28'      N = 0.017      Q = 3.13 cfs  
A = 1.76 sf      V = 1.8 fps  
15.00 ft WP  
S = 0.007 %

### Swale A2 for Basins O1 + A1 + A2 flow - Grass-lined

Q100 = 4.34 cfs       $Q = \frac{1.486AR^{2.33}}{n}$   
S = 1.2 %      n = 0.035

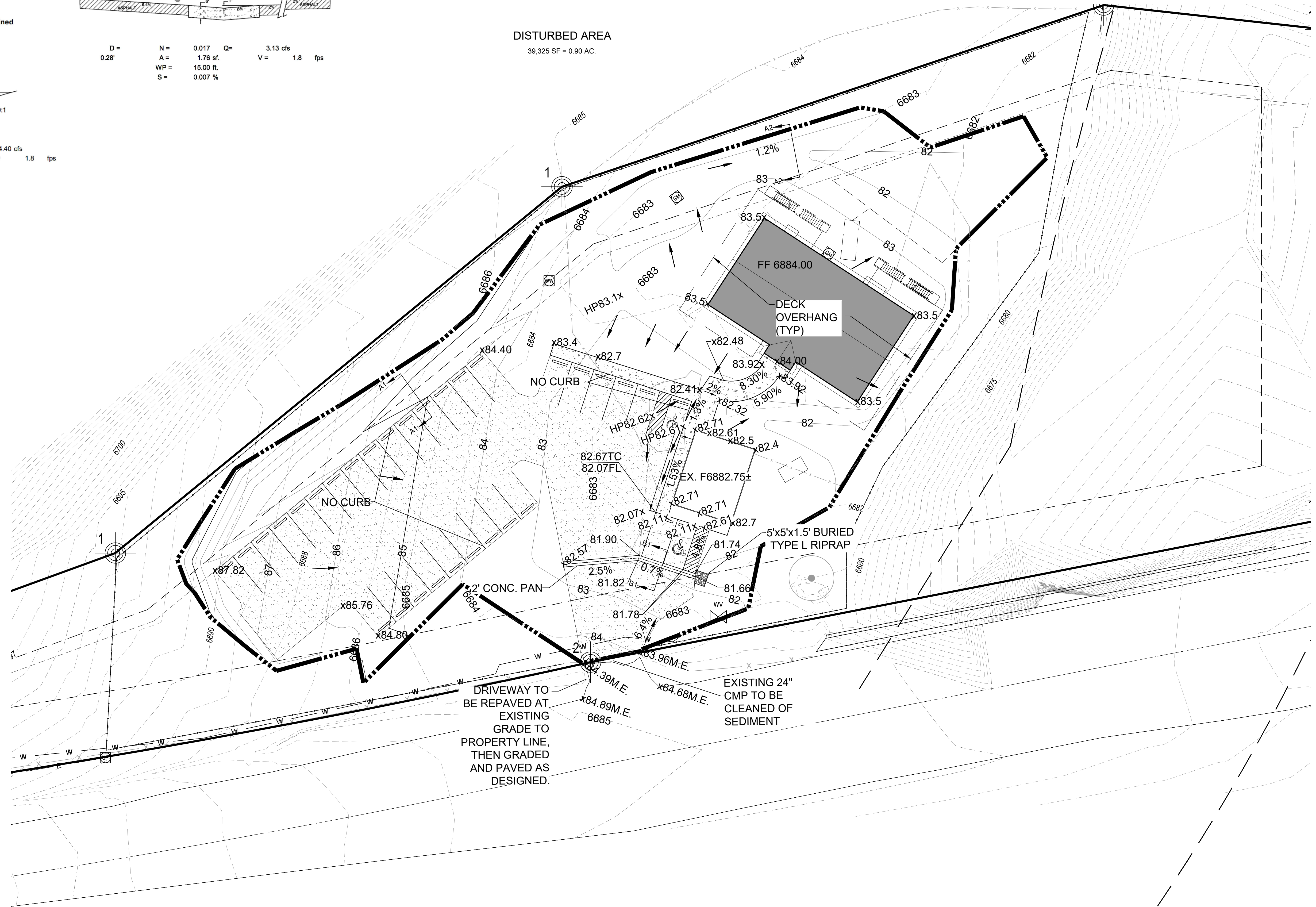


D = 0.49      N = 0.035      Q = 4.40 cfs  
A = 2.40 sf      V = 1.8 fps  
10 WP = 9.85 ft  
10 S = 0.012 %



### DISTURBED AREA

39,325 SF = 0.90 AC.



BEFORE YOU DIG CALL UTILITY NOTIFICATION CENTER OF COLORADO 811 CALL 7 BUSINESS DAYS IN ADVANCE BEFORE YOU BEGIN ANY EXCAVATION WORK. MARKING OF UNDERGROUND UTILITIES					
NO.	REVISIONS	DATE	BY	DESCRIPTION	COUNTY COMMENTS
1		06-25-20	CLE		
PREPARED BY: <b>TRUE WEST CO., LLC</b> 16352 E Bates Drive Aurora, CO 80013 303-823-3664 truewest@truest.net					
DESCRIPTION: <b>GRADING PLAN</b> HOTCHKISS COMMERCIAL OFFICES 2290 OLD RANCH ROAD					
PREPARED FOR: JOHN HOTCHKISS 9161 ESTEBARY CIRCLE COLORADO SPRINGS, CO 80920-7580					
ENGINEERS SEAL:					
DESIGNED BY: CLE DRAWN BY: CLE CHECKED BY: CLE DRAWER NUMBER:					
DATE: 8/5/2019 SCALE: 1" = 20' SHEET NUMBER: 1 OF 1					