

#### KEYED NOTES

1. LOCATION OF UTILITY METER DISCONNECT SWITCH AND CT CABINET. REFER TO "RISER DIAGRAM" ON SHEET E3.01.
2. PROVIDE 120V ELECTRICAL CONNECTION WITH (2)#8 & (1)#8G. IN 2" PVC ROUTED BELOW GRADE FOR DRIVE-THRU BACKLIT MENU BOARD PER MANUFACTURER'S INSTRUCTIONS. CONDUIT SHALL COME UP IN CENTER OF POST. SIGN COMPANY REPRESENTATIVE TO GIVE EXACT LOCATIONS/DIMENSIONS FOR GC TO MATCH. CONTRACTOR SHALL REPAIR EXISTING PARKING SURFACES FROM TRENCHING TO MATCH PREVIOUS CONDITIONS.
3. PROVIDE 120V ELECTRICAL CONNECTION WITH (2)#8 & (1)#8G. IN 2" PVC ROUTED BELOW GRADE FOR NEW MONUMENT SIGN PER REPRESENTATIVE PRIOR TO ROUGH-IN. CONTRACTOR SHALL REPAIR EXISTING PARKING SURFACES FROM TRENCHING TO MATCH PREVIOUS CONDITIONS.
4. NOT USED.
5. LOCATION OF CABLE INTERNET DEMARC
6. PROVIDE 2" CONDUIT W/ PULL STRING 24" BEHIND MENU BOARD TO CHRISTY BOX FOR FUTURE DIGITAL MENU BOARD UPGRADE. COORDINATE W/ SIGN MANUFACTURER.
7. PROVIDE 2" CONDUIT W/ PULL STRING TO CHRISTY BOX BETWEEN "CHOOSE LANE" DIRECTIONAL SIGNAGE AND CLEARANCE BAR FOR FUTURE DRIVE THRU SENSORS.

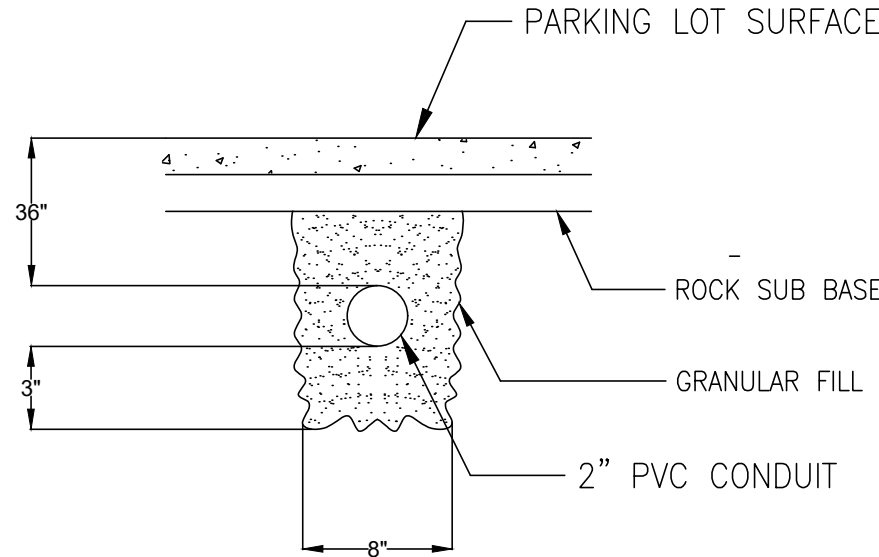
SEE S1.4 FOR POLE BASE DETAIL

#### GENERAL NOTES

1. FOR UTILITY TRANSFORMER, TELEPHONE SERVICE, GAS, WATER, AND SANITARY SEWER LOCATIONS; SEE CIVIL SITE PLAN.
2. THE ELECTRICAL CONTRACTOR IS RESPONSIBLE FOR COORDINATION AND COMPLIANCE WITH ALL UTILITY COMPANIES REQUIREMENTS. INCOMING POWER AND TELEPHONE SERVICES IS EXISTING TO REMAIN. VERIFY REQUIREMENTS WITH UTILITIES PRIOR TO INSTALLATION.

#### SITE NOTES

WATER LINES, CONDUITS FOR ELECTRICAL, OR OTHER UTILITIES SHALL BE LOCATED SO AS TO NOT CONFLICT WITH REQUIRED TREE LOCATIONS FOR STREETS AND PARKING LOTS.



#### 3 TRENCHING DETAIL

SCALE: N.T.S.



Schedule									
Symbol	Label	Quantity	Manufacturer	Catalog Number	Description	Number Lamps	Lumens Per Lamp	Light Loss Factor	Wattage
L6	L6	1	RAS LIGHTING INC.	WPLED26-WPLED26/D10 (WALLPACK) - ALED26-ALED26/D10 (AREA LIGHTER)	CAST FINNED METAL HOUSING, MACHINED METAL HEAT SINK, 1 CIRCUIT BOARD WITH 1 LED, MOLDED PLASTIC REFLECTOR WITH SEMI-SPECULAR FINISH, CLEAR FLAT GLASS LENS IN CAST BROWN PAINTED METAL FRAME.	1	3474	0.92	30
L7	L7	4	Self	WPLED26-WPLED26/D10 (WALLPACK) - ALED26-ALED26/D10 (AREA LIGHTER)	CROWN-L90-277V 830_BA110	1	4200	0.92	40
L9	L9	10	DMF LIGHTING	DRDSS-4R-10930	DRDSS-4R-10930	1	1015	0.92	11.8
P	P	7	NLS Lighting	NV-1-T4-48L-140K-UNV-HSS	T4 OPTICS WITH BLACK HSS	1	9674	0.92	156

Statistics						
Description	Symbol	Avg	Max	Min	Max/Min	Avg/Min
Building	+	7.7 fc	17.6 fc	1.1 fc	16.6:1	7.0:1
Drive Thru	+	4.1 fc	16.3 fc	2.0 fc	8.2:1	2.1:1
Parking	+	3.0 fc	4.9 fc	1.3 fc	3.8:1	2.3:1
Trash	+	1.6 fc	2.6 fc	0.6 fc	4.3:1	2.7:1

**CASE**  
Engineering Inc.

796 Merus Court  
St. Louis, MO 63026

T 636.349.1600  
F 636.349.1730



1001 SE SANDY BLVD, SUITE 100  
PORTLAND, OR 97214  
V. 503.552.9079  
F. 503.241.7055  
WWW.GNICHARCH.COM

08.20.21



Project No: CO-0707

Dutch Bros Coffee - New Freestanding Store  
7520 Falcon Market Place  
Falcon, CO 80831  
For: Dutch Bros Coffee  
110 SW 4th Street  
Grants Pass, OR 97526

DB2550-A1

ISSUED FOR PERMIT  
REVIEW:  
08.20.2021

REV: DATE: DESCRIPTION:

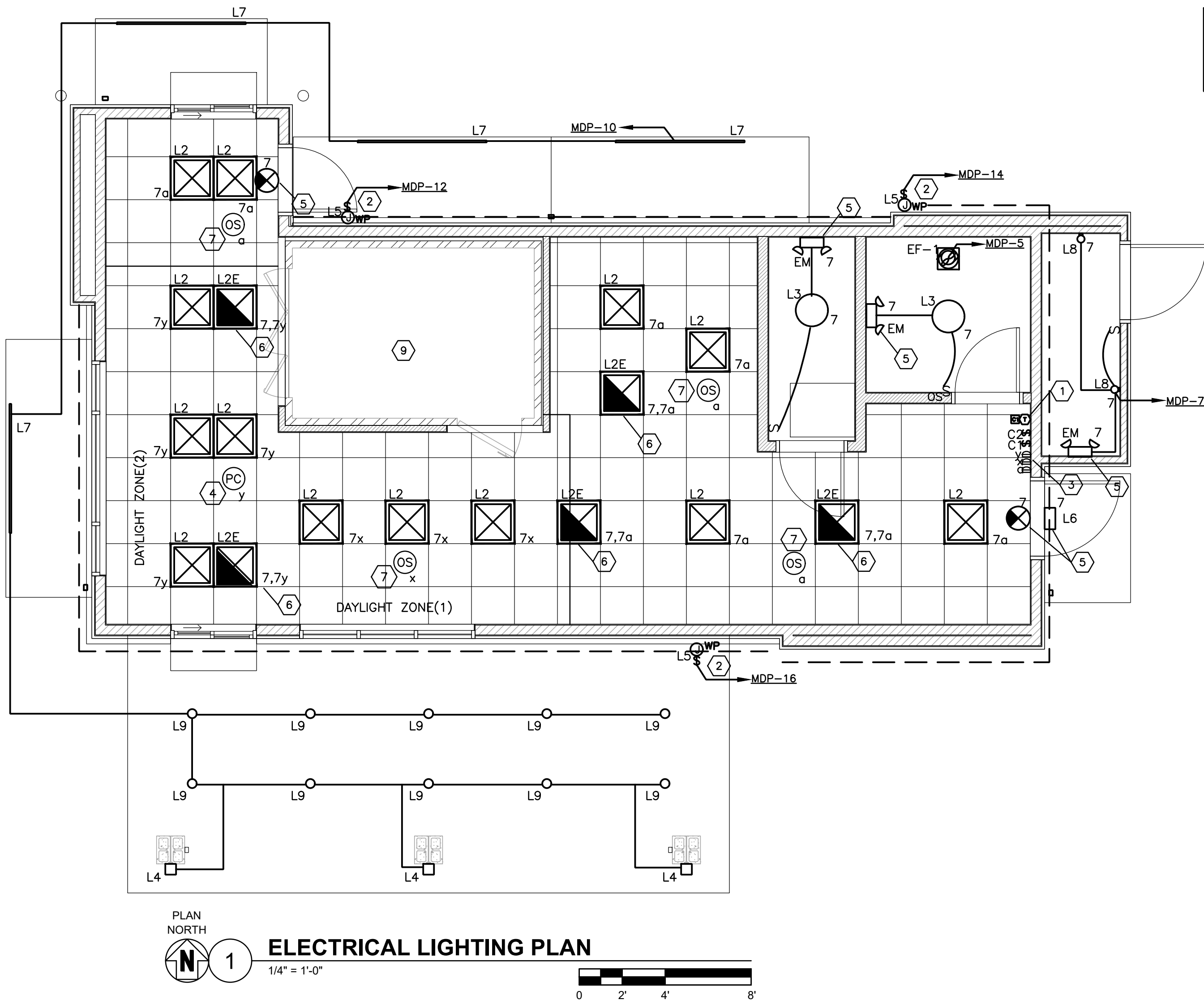
SHEET NAME:

ELECTRICAL  
SITE & PHOTOMETRIC  
PLAN

SHEET NUMBER:

E0.01





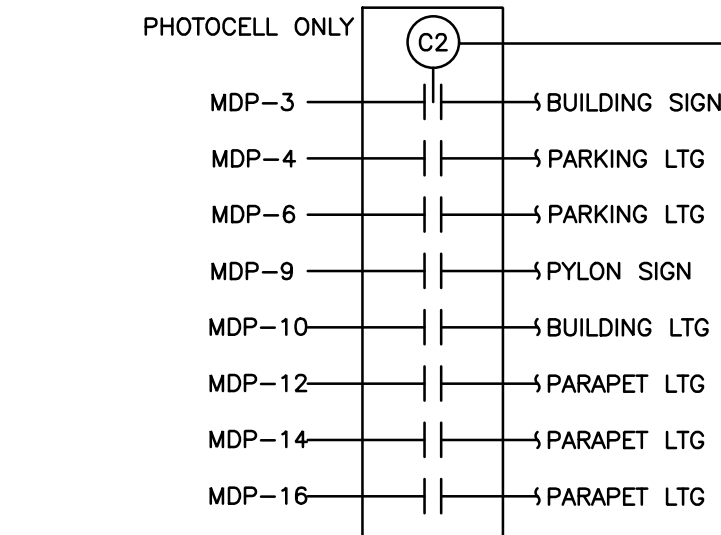
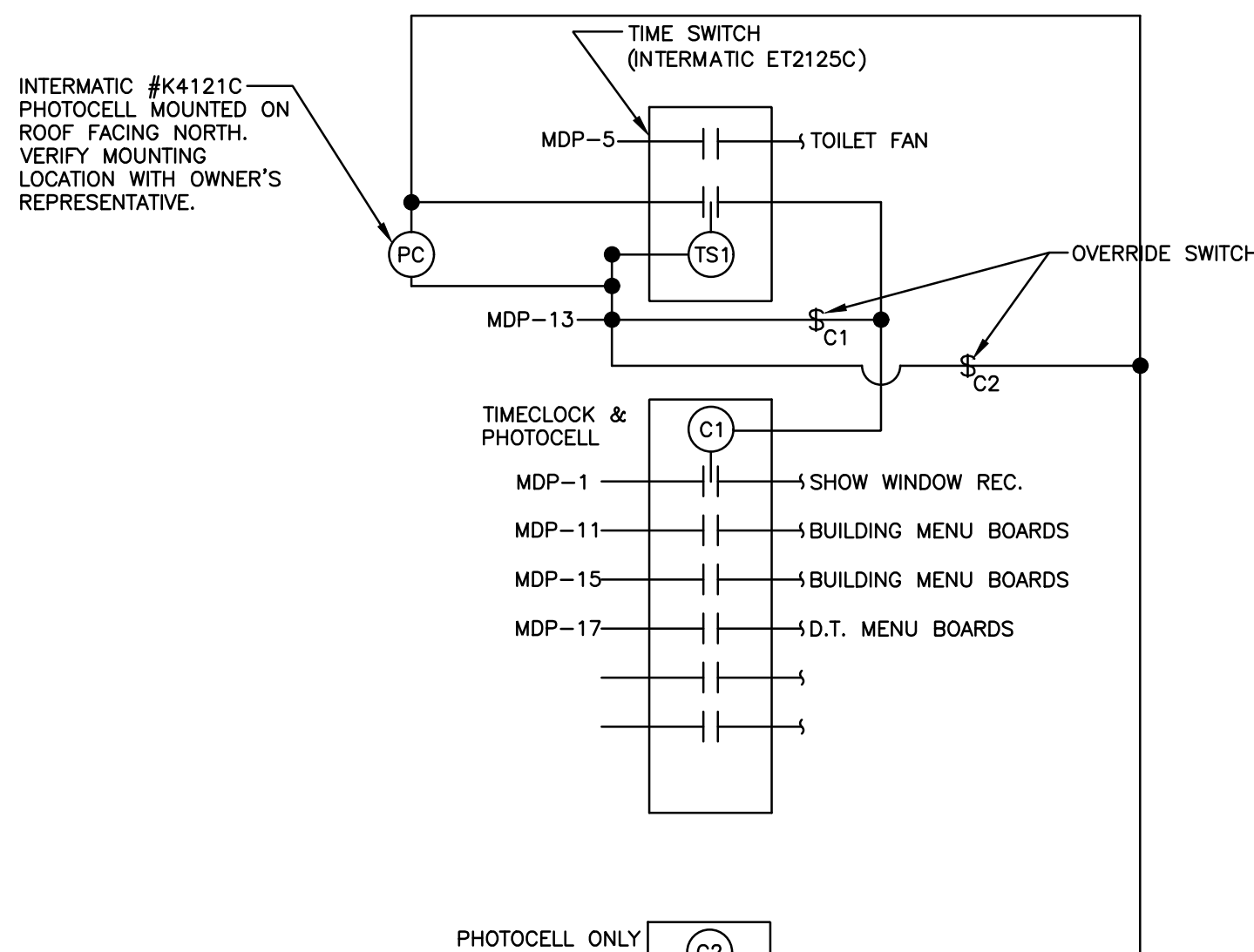
LIGHTING FIXTURE SCHEDULE						
ID	MANUFACTURER	MODEL #	LAMPS	VOLTAGE	WATTAGE	REMARKS
L2	EIKO	SLM22-4CB-40K-U/09764 MV, 0-10V DIM	LED	120/277	30W	2x2 FLAT PANEL, LAYIN GRID CEILING, FROSTED LENS, LED 30W, 3750LM, 4000K, 0-10V DIM
L2E	EIKO	SLM22-4CB-40K-U/09764 MV, 0-10V DIM	LED	120/277	30W	2x2 FLAT PANEL, LAYIN GRID CEILING, FROSTED LENS, LED 30W, 3750LM, 4000K, 0-10V DIM, EMERGENCY BATTERY PACK
L3	NUVO	26W/LED/15/RND/FLUSH/3K/WH-62-1191SP MV, 120V ELV DIM	LED	120/277	26W	16" DIA SURFACE J-BOX MOUNTED LED MILK-WHITE DIFFUSER, ROUND WHITE TRIM, 26W, 2000LM, 3000K ELV DIM
L4	TECH LIGHTING	700 OWVEX-9-3000K-4-H-UNV 120V NON-DIM	LED	120/277	19W	EXTERIOR LIGHT SCENCE, 5" SQUARE, 19W 600LM, 3000K, WET LOCATION, ADJUSTABLE UP/DOWN BEAM COLOR CHARCOAL
L5	LEKTRON	RIGID LED LASER/LEON LED SIMULATED NEON	LED	120/277	100W	RIGID SYSTEM BASED ON PHILIPS ADVANCED 100W, 24V OUTPUT LED DRIVER - LEDINTAG024V4170 APPROX 118FT PER STORE, 24V, 1.5W/FT, LOCATED INSIDE OF BUILDING, ACCESSIBLE LOCATION. USE USE TRANSFORMER SIZES PER RUNS/WIRING GROUPS - DEFAULT 180W. COORDINATE WITH SIGN COMPANY. SEE CONTACTS ON COVER SHEET.
L6	RAB	WPLED-26-Y/ESP MV, NON-DIM	LED	120/277	40W	EXTERIOR DECORATIVE WALLPACK, APPROX 40W, 5000LM, 3000K, W/EMERGENCY BACK UP, NO MOTION SENSOR OR PHOTOCELL
L7	SELF	CROWN-70-40K-110-S-SSP	LED	120/277	60W	6" WET LOCATION LINKABLE BATTEN STRIP, LED, HIGH-OUTPUT, 60W, 6300LM, 4000K, INTEGRAL DRIVER
L8	NUVO	65-226 (CEILING MOUNT)	LED	120/277	13W	CEILING MOUNTED VAPOR PROOF FIXTURE, WITH GUARD, WILVER, LED, 13W, 850LM, 500K, WET LOCATION LISTED, FOR ELECTRICAL OR MECHANICAL ROOM.
L9	DMF LTG	DRD5S-4-R	LED	120/277	12W	4" ROUND CANOPY DOWNLIGHT
P	IMPERIAL LTG	NV-1-T4-48L-1-40K-UNV-HSS WITH FSP-211 MOTION SENSOR & HOUSE SIDE SHIELD	LED	120/277	156W	SITE POLE HEAD, LED 156W, 9674LM, 4000K, DARK BRONZE, TYPE II DISTRIBUTION, WITH 17"POLE, VERIFY PER LOCAL REQUIREMENTS PRIOR TO ORDERING - WATTS/LUMINS, KELVIN LIGHT TEMPERATURE, TYPE DIST, MOUNTING CONFIG, SINGLE OR DOUBLE, COLOR AND HEIGHT DRILL HOLES IN POLES FOR HEADS IF REQUIRED IN FIELD VERIFY COLOR/HEIGHT BEFORE ORDERING.
X	BEST	EZXTEU2RWEM MV,NON DIM, 4W	LED	120/277	30W	EXIT, SELF POWERED SINGLE/DOUBLE FACE, UNIVERSAL MOUNT, LED, RED ON WHITE, VERIFY COLORS
EM	LITHONIA	ELM2-LED-W	LED	120/277	1.8W	BUG EYE LED UNIT WITH WHITE FINISH.
A. INSTALLATION OF LIGHT FIXTURES SHALL BE ACCORDING TO MANUFACTURER'S RECOMMENDATIONS AND APPLICABLE CODE REQUIREMENTS.						
B. VERIFY THE EXACT MOUNTING HEIGHT AND FINISH OF ALL LIGHTING FIXTURES WITH ARCHITECT PRIOR TO PLACING ORDER OR COMMENCING ROUGH-IN.						
C. LIGHT FIXTURES SHALL BE PROVIDED BY THE ELECTRICAL CONTRACTOR.						
D. ALL MEANS OF EGRESS LIGHTING AND EXIT SIGNS SHALL HAVE A MINIMUM OF 90 MINUTES BACKUP POWER.						

PERIMETER LIGHT NOTE:

L5 - LED STRIP LIGHTING AT PERIMETER OF PARAPET 2, APPROX 118FT. RUN

KEYED NOTES

- 1 LIGHTING CONTACTORS AND TIMECLOCK OVERRIDE SWITCH. REFER TO "LIGHTING CONTROL DIAGRAM" ON THIS SHEET. COORDINATE LOCATION WITH OWNER'S REPRESENTATIVE PRIOR TO ROUGHIN.
- 2 POWER FOR PARAPET LIGHTING DRIVER. EC TO COORDINATE WITH LEKTRON FOR TRANSFORMER LOCATIONS.
- 3 LIGHTING CONTROL SWITCHBANK. LOCATION BY BACK DOOR.
- 4 PROVIDE "SENSOR SWITCH" CM ADC AUTOMATIC DAYLIGHTING PHOTOCELL AND PP-15 POWER PACK. SEE DETAIL #3 THIS SHEET.
- 5 EC TO CONNECT EMERGENCY BATTERY DRIVER, EXIT SIGNS, AND NL TO UNSWITCHED LEG OF LOCAL CIRCUIT INDICATED.
- 6 EC TO CONNECT FIXTURE LED DRIVER TO SWITCHED LEG OF CIRCUIT AND EMERGENCY BATTERY DRIVER TO UNSWITCHED LEG OF CIRCUIT. EMERGENCY BATTERY DRIVER ARE SHIPPED SEPARATELY AND ARE TO BE FIELD INSTALLED AND CONNECTED BY EC.
- 7 EC TO PROVIDE AQUITY BRANDS LOW VOLTAGE DUAL TECHNOLOGY CEILING MOUNTED OCCUPANCY SENSOR SWITCH CM-PDT9 & PP-15 POWER PACK. SENSOR SHALL ENERGIZE SWITCH FOR LOCAL CONTROL WHERE REQUIRED.
- 8 EC TO PROVIDE EXTERIOR OCCUPANCY SENSOR LISTED FOR OUTDOOR USE. COMPATIBLE WITH CANOPY LUMINAIRES FOR AUTOMATIC DIMMING CONTROLS PER C130.2(c)3. SENSOR SHALL BE CAPABLE OF AUTOMATICALLY REDUCING LIGHTING BY 40% WHEN AREA IS UNOCCUPIED AND NO MORE THAN 90% WHEN OCCUPIED.
- 9 SEE KEYED NOTE #5 ON SHEET E2.01 FOR WALK-IN COOLER LIGHTING REQUIREMENTS. LIGHTING FIXTURES THAT ARE FURNISHED LOOSE BY THE WALK-IN MANUFACTURER SHALL BE INSTALLED AND CONNECTED BY THE EC IN ACCORDANCE WITH WALK-IN MANUFACTURERS REQUIREMENTS.



CONTACTOR 'C1' TO BE PHOTOCELL ON AND TIMECLOCK OFF  
CONTACTOR 'C2' TO BE PHOTOCELL ON AND OFF

2 LIGHTING CONTROL DIAGRAM

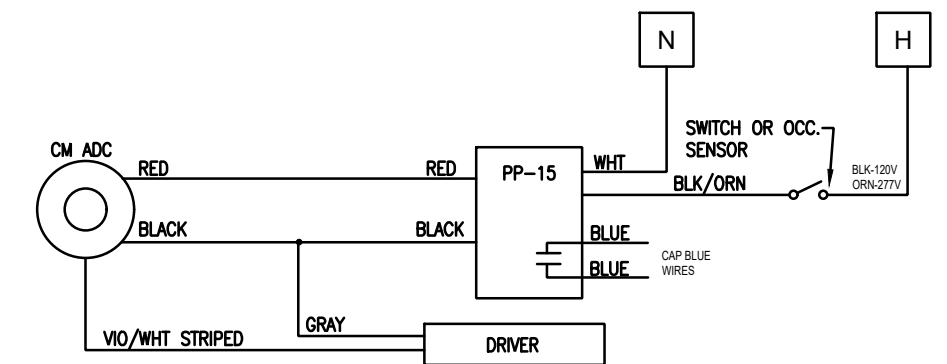
E1.01 SCALE: N.T.S.

LIGHTING GENERAL NOTES

- A. CONNECT EXIT SIGNS, EMERGENCY AND NIGHT LIGHTS TO AN UNSWITCHED LIGHTING CIRCUIT, NOT CONTROLLED BY ANY OCCUPANCY SENSORS, SWITCHES OR CONTACTORS.
- B. PROVIDE A DEDICATED NEUTRAL WITH ALL DIMMING SYSTEM CIRCUITS, NO COMMON NEUTRALS SHALL BE ALLOWED.
- C. REFER TO ARCHITECTURAL REFLECTED CEILING PLAN AND DETAILS FOR THE EXACT LOCATION OF ALL LIGHTING FIXTURES AND ANY OTHER EQUIPMENT INSTALLED IN THE CEILING SYSTEM. VERIFY EXACT MOUNTING HEIGHTS AND FINISHES WITH ARCHITECT PRIOR TO ROUGH-IN.
- D. REFER TO THE POWER PLANS FOR LOCATIONS OF ELECTRICAL EQUIPMENT.
- E. PROVIDE TWO ADDITIONAL #12 CONDUCTORS FOR ALL 0-10V DIMMING CIRCUITS.
- F. 15" MIN TO BOTTOM OF ALL ROUGH-IN BOXES FOR USER CONTROLLED SWITCHES, OUTLETS ETC. AND 48" MAX TO TOP OF ROUGH-IN BOX.
- G. 48" TO TOP OF ROUGH-IN BOX.

ELECTRICAL SYMBOLS

SYMBOL	DESCRIPTION
A-1	HOME RUN TO PANEL. CIRCUIT NUMBERS, PHASE, NEUTRAL AND GROUND CONDUCTORS INDICATED ALONG WITH ISOLATED GROUND CONDUCTOR IF APPLICABLE
A-1	PARTIAL CIRCUIT
S	SINGLE POLE SWITCH, +3'-10" OR AS NOTED
S2	DOUBLE POLE, SINGLE THROW SWITCH, +3'-10" OR AS NOTED
S3	THREE-WAY SWITCH, +3'-10" OR AS NOTED
D	DIMMER, +3'-10" OR AS NOTED
SoS	WALL MOUNTED OCCUPANCY SENSOR, +3'-10" OR AS NOTED
So	WALL MOUNTED OCCUPANCY SENSOR, +3'-10" OR AS NOTED, CONTROLLED BY ROOM CONTROLLER
SoS	CEILING MOUNTED OCCUPANCY SENSOR
So	CEILING MOUNTED OCCUPANCY SENSOR, CONTROLLED BY ROOM CONTROLLER
SoS	CEILING MOUNTED INTERIOR DAYLIGHT HARVESTING PHOTOCELL SENSOR CONTROLLED BY ROOM CONTROLLER
PP	POWER PACK, INSTALLED ABOVE ACCESSIBLE CEILING
DP	DUPLEX RECEPTACLE, +18" OR AS NOTED
DP	GFI DUPLEX RECEPTACLE +18" OR AS NOTED
DP	QUADPLEX RECEPTACLE, +18" OR AS NOTED
DP	GFI QUADPLEX RECEPTACLE, +18" OR AS NOTED
DP	GROUND FAULT INTERRUPTING RECEPTACLE, +18" OR AS NOTED
DP	WEATHERPROOF GROUND FAULT INTERRUPTING RECEPTACLE, +18" OR AS NOTED
DP	SPECIAL RECEPTACLE, NEMA STYLE AS NOTED, +18" OR AS NOTED
DP	USB CHARGING DUPLEX RECEPTACLE, +18" OR AS NOTED
DP	RECEPTACLE INSTALLED FLUSH IN CEILING
DP	SWITCHED RECEPTACLE FOR INTERIOR SIGNAGE, +100" OR AS NOTED, LABEL RECEPTACLE ACCORDINGLY
DP	SWITCHED RECEPTACLE FOR PARTY LIGHTS, +100" OR AS NOTED, LABEL RECEPTACLE ACCORDINGLY
DP	JUNCTION BOX
DP	DISCONNECT SWITCH, TOP AT +6'-0" OR AS NOTED
DP	DISCONNECT SWITCH PROVIDE WITH EQUIPMENT
DP	LIGHTING CONTACTOR, INSTALLED AS NOTED
DP	TIME CLOCK, +6'-2" OR AS NOTED
DP	EXTERIOR PHOTOCELL, INSTALLED ON ROOF FACING NORTH
DP	ROOM CONTROLLER
DP	PLUG LOAD CONTROLLER
DP	ELECTRICALLY OPERATED DAMPER, PROVIDED BY MECHANICAL CONTRACTOR, WIRE BY ELECTRICAL CONTRACTOR
DP	THERMOSTAT, TEMPERATURE SENSOR, CARBON DIOXIDE SENSOR AND HUMIDISTAT PROVIDED BY MECHANICAL CONTRACTOR, +3'-10" OR AS NOTED
DP	PUSHBUTTON, TOP AT +4'-6" OR AS NOTED
DP	DOOR BELL CHIME, +8'-0" OR AS NOTED
DP	TELEPHONE/DATA OUTLET, +18" WITH 1" CONDUIT TO ABOVE CEILING
DP	DATA OUTLET, +18" WITH 3/4" CONDUIT TO ABOVE CEILING
DP	MOUNTING HEIGHT ABOVE FINISHED FLOOR TO CENTERLINE OF DEVICE
DP	TYPICAL
DP	FIRE ALARM CONTROL PANEL, FLUSH MOUNTED, TOP AT +6'-0"
DP	MANUAL FIRE ALARM PULL STATION, +3'-10" PER ADA
DP	FIRE ALARM HORN/STROBE, +80" TO BOTTOM OF DEVICE PER ADA
DP	EXTERIOR WEATHERPROOF FIRE ALARM HORN, +10'-0" AFG
DP	STROBE ONLY, +80" TO BOTTOM OF DEVICE PER ADA
DP	FIRE ALARM HORN/STROBE, CEILING MOUNTED
DP	STROBE ONLY, CEILING MOUNTED
DP	AREA TYPE PHOTOELECTRIC SMOKE DETECTOR WITH SAMPLING TUBES AND REMOTE INDICATOR LIGHT MOUNTED FLUSH IN CEILING BELOW DETECTOR



3 DAYLIGHT ZONE WIRING DIAGRAM

E1.01 SCALE: N.T.S.

**CASE**  
Engineering Inc.

796 Merus Court  
St. Louis, MO 63026  
T 636.349.1600  
F 636.349.1730



1001 SE SANDY BLVD, SUITE 100  
PORTLAND, OR 97214  
V. 503.552.9079  
F. 503.241.7055  
WWW.GNICHARCH.COM

08.20.21



Project No: CO-0707  
Dutch Bros Coffee - New Freestanding Store  
7520 Falcon Market Place  
Falcon, CO 80831  
For: Dutch Bros Coffee  
110 SW 4th Street  
Grants Pass, OR 97526

ISSUED FOR PERMIT  
REVIEW:  
08.20.2021

REV#	DATE	DESCRIPTION

SHEET NAME:

LIGHTING  
PLAN

SHEET NUMBER:

E1.01