

Clarify whether approval for pre-subdivision site grading is being requested. (Other documents say it's not.)

GRADING AND EROSION CONTROL PLANS

THE COMMONS AT FALCON FIELD

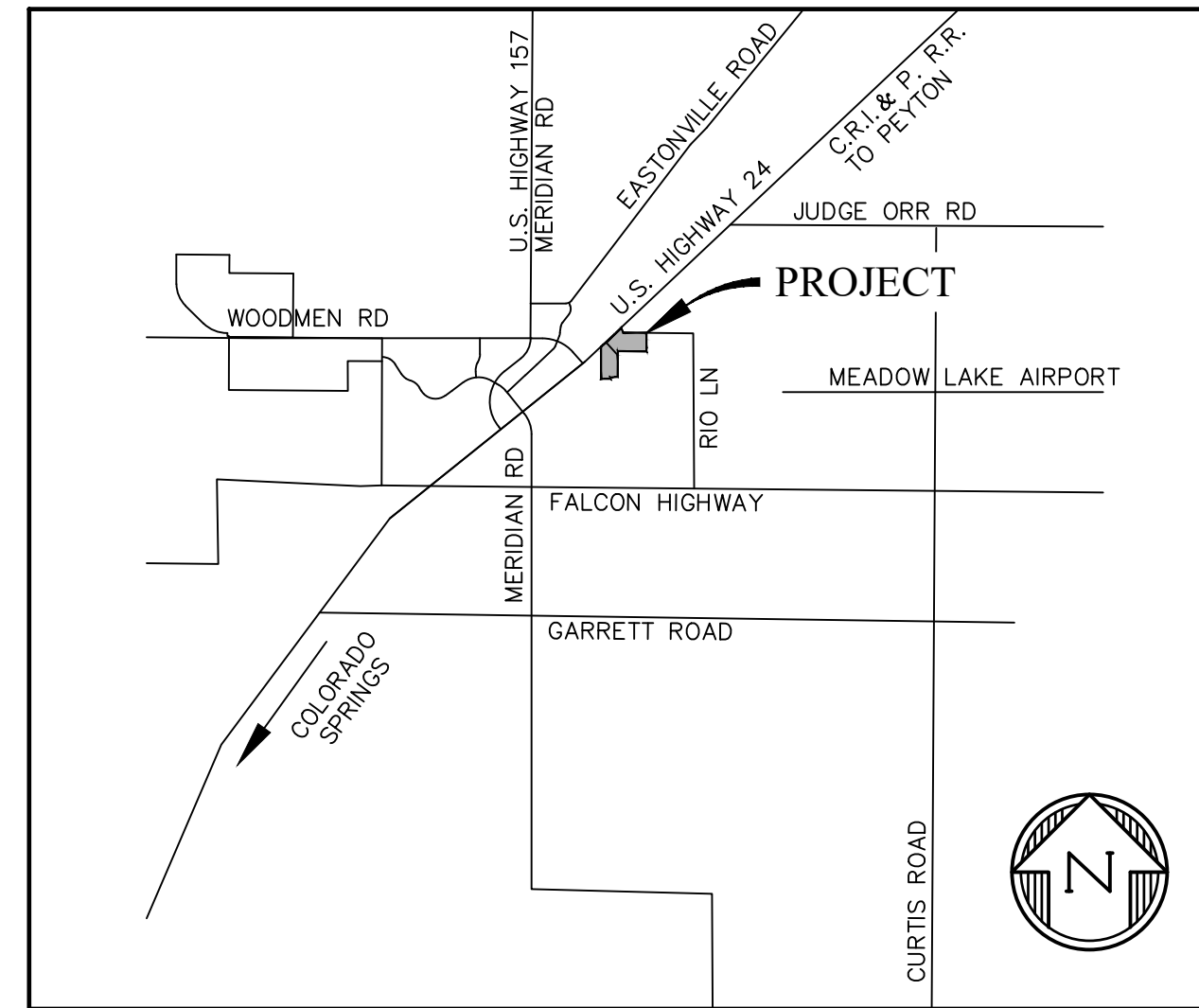
SECTION 7, TOWNSHIP 13 SOUTH, RANGE 64 WEST OF THE 6TH P.M.
PEYTON, EL PASO COUNTY, COLORADO

EPC STORMWATER REVIEW COMMENTS
IN ORANGE BOXES WITH BLACK TEXT

Update standard notes for EPC Grading and Erosion Control Plans. Some of the highlighted notes are in the wrong order or do not match the current standard notes. See current GEC Checklist for current notes.

STANDARD NOTES FOR EL PASO COUNTY GRADING AND EROSION CONTROL PLANS

- STORMWATER DISCHARGES FROM CONSTRUCTION SITES SHALL NOT CAUSE OR THREATEN TO CAUSE POLLUTION, CONTAMINATION, OR DEGRADATION OF STATE WATERS. ALL WORK AND EARTH DISTURBANCE SHALL BE DONE IN A MANNER THAT MINIMIZES POLLUTION OF ANY ON-SITE OR OFF SITE WATERS, INCLUDING WETLANDS.
- NOTWITHSTANDING ANYTHING DEPICTED IN THESE PLANS IN WORDS OR GRAPHIC REPRESENTATION, ALL DESIGN AND CONSTRUCTION RELATED TO ROADS, STORM DRAINAGE AND EROSION CONTROL SHALL CONFORM TO THE STANDARDS AND REQUIREMENTS OF THE MOST RECENT VERSION OF THE RELEVANT ADOPTED EL PASO COUNTY STANDARDS, INCLUDING THE LAND DEVELOPMENT CODE, THE ENGINEERING CRITERIA MANUAL, THE DRAINAGE CRITERIA MANUAL, AND THE DRAINAGE CRITERIA MANUAL VOLUME 2. ANY DEVIATIONS TO REGULATIONS AND STANDARDS MUST BE REQUESTED, AND APPROVED, IN WRITING.
- A SEPARATE STORMWATER MANAGEMENT PLAN (SWMP) FOR THIS PROJECT SHALL BE COMPLETED AND AN EROSION AND STORMWATER QUALITY CONTROL PERMIT (ESQCP) ISSUED PRIOR TO COMMENCING CONSTRUCTION. DURING CONSTRUCTION THE SWMP IS THE RESPONSIBILITY OF THE DESIGNATED STORMWATER MANAGER, SHALL BE LOCATED ON SITE AT ALL TIMES AND SHALL BE KEPT UP TO DATE WITH WORK PROGRESS AND CHANGES IN THE FIELD.
- ONCE THE ESQCP HAS BEEN ISSUED, THE CONTRACTOR MAY INSTALL THE INITIAL STAGE EROSION AND SEDIMENT CONTROL BMPs AS INDICATED ON THE GEC. A PRECONSTRUCTION MEETING BETWEEN THE CONTRACTOR, ENGINEER, AND EL PASO COUNTY WILL BE HELD PRIOR TO ANY CONSTRUCTION. IT IS THE RESPONSIBILITY OF THE APPLICANT TO COORDINATE THE MEETING TIME AND PLACE WITH COUNTY DSD INSPECTIONS STAFF.
- SOIL EROSION CONTROL MEASURES FOR ALL SLOPES, CHANNELS, DITCHES, OR ANY DISTURBED LAND AREA SHALL BE COMPLETED WITHIN 21 CALENDAR DAYS AFTER FINAL GRADING, OR FINAL EARTH DISTURBANCE, HAS BEEN COMPLETED. DISTURBED AREAS AND STOCKPILES WHICH ARE NOT AT FINAL GRADE BUT WILL REMAIN DORMANT FOR LONGER THAN 30 DAYS SHALL ALSO BE MULCHED WITHIN 21 DAYS AFTER INTERIM GRADING. AN AREA THAT IS GOING TO REMAIN IN AN INTERIM STATE FOR MORE THAN 60 DAYS SHALL ALSO BE SEEDED. ALL TEMPORARY SOIL EROSION CONTROL MEASURES AND BMPs SHALL BE MAINTAINED UNTIL PERMANENT SOIL EROSION CONTROL MEASURES ARE IMPLEMENTED AND ESTABLISHED.
- TEMPORARY SOIL EROSION CONTROL FACILITIES SHALL BE REMOVED AND EARTH DISTURBANCE AREAS GRADED AND STABILIZED WITH PERMANENT SOIL EROSION CONTROL MEASURES PURSUANT TO STANDARDS AND SPECIFICATION PRESCRIBED IN THE DCM VOLUME II AND THE ENGINEERING CRITERIA MANUAL (ECM) APPENDIX I.
- ALL PERSONS ENGAGED IN EARTH DISTURBANCE SHALL IMPLEMENT AND MAINTAIN ACCEPTABLE SOIL EROSION AND SEDIMENT CONTROL MEASURES INCLUDING BMPs IN CONFORMANCE WITH THE EROSION CONTROL TECHNICAL STANDARDS OF THE DRAINAGE CRITERIA MANUAL (DCM) VOLUME II AND IN ACCORDANCE WITH THE STORMWATER MANAGEMENT PLAN (SWMP).
- ALL TEMPORARY EROSION CONTROL FACILITIES INCLUDING BMPs AND ALL PERMANENT FACILITIES INTENDED TO CONTROL EROSION OF ANY EARTH DISTURBANCE OPERATIONS, SHALL BE INSTALLED AS DEFINED IN THE APPROVED PLANS, THE SWMP AND THE DCM VOLUME II AND MAINTAINED THROUGHOUT THE DURATION OF THE EARTH DISTURBANCE OPERATION.
- ANY EARTH DISTURBANCE SHALL BE CONDUCTED IN SUCH A MANNER SO AS TO EFFECTIVELY REDUCE ACCELERATED SOIL EROSION AND RESULTING SEDIMENTATION. ALL DISTURBANCES SHALL BE DESIGNED, CONSTRUCTED, AND COMPLETED SO THAT THE EXPOSED AREA OF ANY DISTURBED LAND SHALL BE LIMITED TO THE SHORTEST PRACTICAL PERIOD OF TIME.
- ANY TEMPORARY OR PERMANENT FACILITY DESIGNED AND CONSTRUCTED FOR THE CONVEYANCE OF STORMWATER AROUND, THROUGH, OR FROM THE EARTH DISTURBANCE AREA SHALL BE DESIGNED TO LIMIT THE DISCHARGE TO A NON-EROSIVE VELOCITY.
- CONCRETE WASH WATER SHALL BE CONTAINED AND DISPOSED OF IN ACCORDANCE WITH THE SWMP. NO WASH WATER SHALL BE DISCHARGED TO OR ALLOWED TO RUNOFF TO STATE WATERS, INCLUDING ANY SURFACE OR SUBSURFACE STORM DRAINAGE SYSTEM OR FACILITIES.
- EROSION CONTROL BLANKETING IS TO BE USED ON SLOPES STEEPER THAN 3:1.
- BUILDING, CONSTRUCTION, EXCAVATION, OR OTHER WASTE MATERIALS SHALL NOT BE TEMPORARILY PLACED OR STORED IN THE STREET, ALLEY, OR OTHER PUBLIC WAY, UNLESS IN ACCORDANCE WITH AN APPROVED TRAFFIC CONTROL PLAN. BMP'S MAY BE REQUIRED BY EL PASO COUNTY ENGINEERING IF DEEMED NECESSARY, BASED ON SPECIFIC CONDITIONS AND CIRCUMSTANCES.
- VEHICLE TRACKING OF SOILS AND CONSTRUCTION DEBRIS OFF-SITE SHALL BE MINIMIZED. MATERIALS TRACKED OFFSITE SHALL BE CLEANED UP AND PROPERLY DISPOSED OF IMMEDIATELY.
- CONTRACTOR SHALL BE RESPONSIBLE FOR THE REMOVAL OF ALL WASTES FROM THE CONSTRUCTION SITE FOR DISPOSAL IN ACCORDANCE WITH LOCAL AND STATE REGULATORY REQUIREMENTS. NO CONSTRUCTION DEBRIS, TREE SLASH, BUILDING MATERIAL WASTES OR UNUSED BUILDING MATERIALS SHALL BE BURIED, DUMPED, OR DISCHARGED AT THE SITE.
- THE OWNER, SITE DEVELOPER, CONTRACTOR, AND/OR THEIR AUTHORIZED AGENTS SHALL BE RESPONSIBLE FOR THE REMOVAL OF ALL CONSTRUCTION DEBRIS, DIRT, TRASH, ROCK, SEDIMENT, AND SAND THAT MAY ACCUMULATE IN THE STORM SEWER OR OTHER DRAINAGE CONVEYANCE SYSTEM AND STORMWATER APPURTENANCES AS A RESULT OF SITE DEVELOPMENT.
- THE QUANTITY OF MATERIALS STORED ON THE PROJECT SITE SHALL BE LIMITED, AS MUCH AS PRACTICAL, TO THAT QUANTITY REQUIRED TO PERFORM THE WORK IN AN ORDERLY SEQUENCE. ALL MATERIALS STORED ON-SITE SHALL BE STORED IN A NEAT, ORDERLY MANNER, IN THEIR ORIGINAL CONTAINERS, WITH ORIGINAL MANUFACTURER'S LABELS.



VICINITY MAP
NTS

STANDARD NOTES FOR EL PASO COUNTY GRADING AND EROSION CONTROL PLANS

- NO CHEMICALS ARE TO BE USED BY THE CONTRACTOR, WHICH HAVE THE POTENTIAL TO BE RELEASED IN STORMWATER UNLESS PERMISSION FOR THE USE OF A SPECIFIC CHEMICAL IS GRANTED IN WRITING BY THE ECM ADMINISTRATOR. IN GRANTING THE USE OF SUCH CHEMICALS, SPECIAL CONDITIONS AND MONITORING MAY BE REQUIRED.
- BULK STORAGE STRUCTURES FOR PETROLEUM PRODUCTS AND OTHER CHEMICALS SHALL HAVE ADEQUATE PROTECTION SO AS TO CONTAIN ALL SPILLS AND PREVENT ANY SPILLED MATERIAL FROM ENTERING STATE WATERS, INCLUDING ANY SURFACE OR SUBSURFACE STORM DRAINAGE SYSTEM OR FACILITIES.
- NO PERSON SHALL CAUSE THE IMPEDIMENT OF STORMWATER FLOW IN THE FLOW LINE OF THE CURB AND GUTTER OR IN THE DITCHLINE.
- INDIVIDUALS SHALL COMPLY WITH THE "COLORADO WATER QUALITY CONTROL ACT" (TITLE 25, ARTICLE 8, CRS), AND THE "CLEAN WATER ACT" (33 USC 1344), IN ADDITION TO THE REQUIREMENTS INCLUDED IN THE DCM VOLUME II AND THE ECM APPENDIX I. ALL APPROPRIATE PERMITS MUST BE OBTAINED BY THE CONTRACTOR PRIOR TO CONSTRUCTION (NPDES, FLOODPLAIN, 404, FUGITIVE DUST, ETC.). IN THE EVENT OF CONFLICTS BETWEEN THESE REQUIREMENTS AND LAWS, RULES, OR REGULATIONS OF OTHER FEDERAL, STATE, OR COUNTY AGENCIES, THE MORE RESTRICTIVE LAWS, RULES, OR REGULATIONS SHALL APPLY.
- ALL CONSTRUCTION TRAFFIC MUST ENTER/EXIT THE SITE AT APPROVED CONSTRUCTION ACCESS POINTS.
- PRIOR TO ACTUAL CONSTRUCTION THE PERMITEE SHALL VERIFY THE LOCATION OF EXISTING UTILITIES.
- A WATER SOURCE SHALL BE AVAILABLE ON SITE DURING EARTHWORK OPERATIONS AND UTILIZED AS REQUIRED TO MINIMIZE DUST FROM EARTHWORK EQUIPMENT AND WIND.
- THE SOILS REPORT FOR THIS SITE HAS BEEN PREPARED BY PROFESSIONAL SERVICE INDUSTRIES, INC. (PSI), PSI PROJECT No. 0532637, DATED JUNE 13, 2013 AND SHALL BE CONSIDERED A PART OF THESE PLANS.
- AT LEAST TEN DAYS PRIOR TO THE ANTICIPATED START OF CONSTRUCTION, FOR PROJECTS THAT WILL DISTURB 1 ACRE OR MORE, THE OWNER OR OPERATOR OF CONSTRUCTION ACTIVITY SHALL SUBMIT A PERMIT APPLICATION FOR STORMWATER DISCHARGE TO THE COLORADO DEPARTMENT OF PUBLIC HEALTH AND ENVIRONMENT, WATER QUALITY CONTROL DIVISION. THE APPLICATION CONTAINS CERTIFICATION OF COMPLETION OF A STORMWATER MANAGEMENT PLAN (SWMP), OF WHICH THIS GRADING AND EROSION CONTROL PLAN MAY BE A PART. FOR INFORMATION OR APPLICATION MATERIALS CONTACT:

COLORADO DEPARTMENT OF PUBLIC HEALTH AND ENVIRONMENT
WATER QUALITY CONTROL DIVISION
WQCD - PERMITS
4300 CHERRY CREEK DRIVE SOUTH
DENVER, CO 80246-1530
ATTN: PERMITS UNIT

SHEET INDEX

CVR - GRADING AND EROSION CONTROL COVER SHEET
EC1-4 - EROSION CONTROL PLAN
DT1-2 - EROSION CONTROL DETAILS

BENCHMARK:

Provide the horizontal and vertical datum.

TO BE DECIDED.

ENGINEER'S STATEMENT

THIS EROSION CONTROL/GRADING PLAN WAS PREPARED UNDER MY DIRECTION AND SUPERVISION AND IS CORRECT TO THE BEST OF MY KNOWLEDGE AND BELIEF. SAID PLAN HAS BEEN PREPARED ACCORDING TO THE CRITERIA ESTABLISHED BY THE COUNTY FOR GRADING AND EROSION CONTROL PLANS. I ACCEPT RESPONSIBILITY FOR ANY LIABILITY CAUSED BY NEGLIGENT ACTS, ERRORS OR OMISSIONS ON MY PART IN PREPARING THIS REPORT.

TIM D. McCONNELL, P.E. _____ DATE _____

OWNER'S STATEMENT

THE OWNER WILL COMPLY WITH THE REQUIREMENTS OF THE GRADING AND EROSION CONTROL PLAN.

Update statement to match the GEC Checklist statement.

OWNER/DEVELOPER _____ DATE _____

EL PASO COUNTY

Add last paragraph to signature block shown in the GEC Checklist.

COUNTY PLAN REVIEW IS PROVIDED ONLY FOR GENERAL CONFORMANCE WITH COUNTY DESIGN CRITERIA. THE COUNTY IS NOT RESPONSIBLE FOR THE ACCURACY AND ADEQUACY OF THE DESIGN DIMENSIONS, AND/OR ELEVATIONS WHICH SHALL BE CONFIRMED AT THE JOB SITE. THE COUNTY THROUGH THE APPROVAL OF THIS DOCUMENTS ASSUMES NO RESPONSIBILITY FOR COMPLETENESS AND/OR ACCURACY OF THIS DOCUMENT.

FILED IN ACCORDANCE WITH THE REQUIREMENTS OF THE EL PASO COUNTY LAND DEVELOPMENT CODE, DRAINAGE CRITERIA, AND ENGINEERING CRITERIA MANUAL AS AMENDED.

JOSHUA PALMER, COUNTY ENGINEER _____ DATE _____

PREPARED BY:

DREXEL, BARRELL & CO.
Engineers-Surveyors
3 SOUTH 7TH STREET
COLORADO SPGS, COLORADO 80905
CONTACT: TIM D. McCONNELL, P.E.
(719) 475-7474
BOULDER • COLORADO SPRINGS • GREELEY

CLIENT:

FALCON FIELD, LLC.
3230 ELECTRA DR N.
COLORADO SPRINGS, CO 80906
(719) 475-7474
CONTACT: PJ ANDERSON

CONSTRUCTION DOCUMENTS FOR:
**THE COMMONS AT
FALCON FIELD**
12445 RIO LANE, AND VACANT LAND
PEYTON, EL PASO COUNTY, COLORADO

ISSUE	DATE
INITIAL ISSUE	3/16/23

DESIGNED BY: TDM
DRAWN BY: GES
CHECKED BY: TDM
FILE NAME: 21604-00ECCV

PREPARED UNDER MY DIRECT SUPERVISION FOR AND ON BEHALF OF DREXEL, BARRELL & CO.

DRAWING SCALE:
HORIZONTAL: N/A
VERTICAL: N/A

GRADING AND
EROSION CONTROL
COVER SHEET

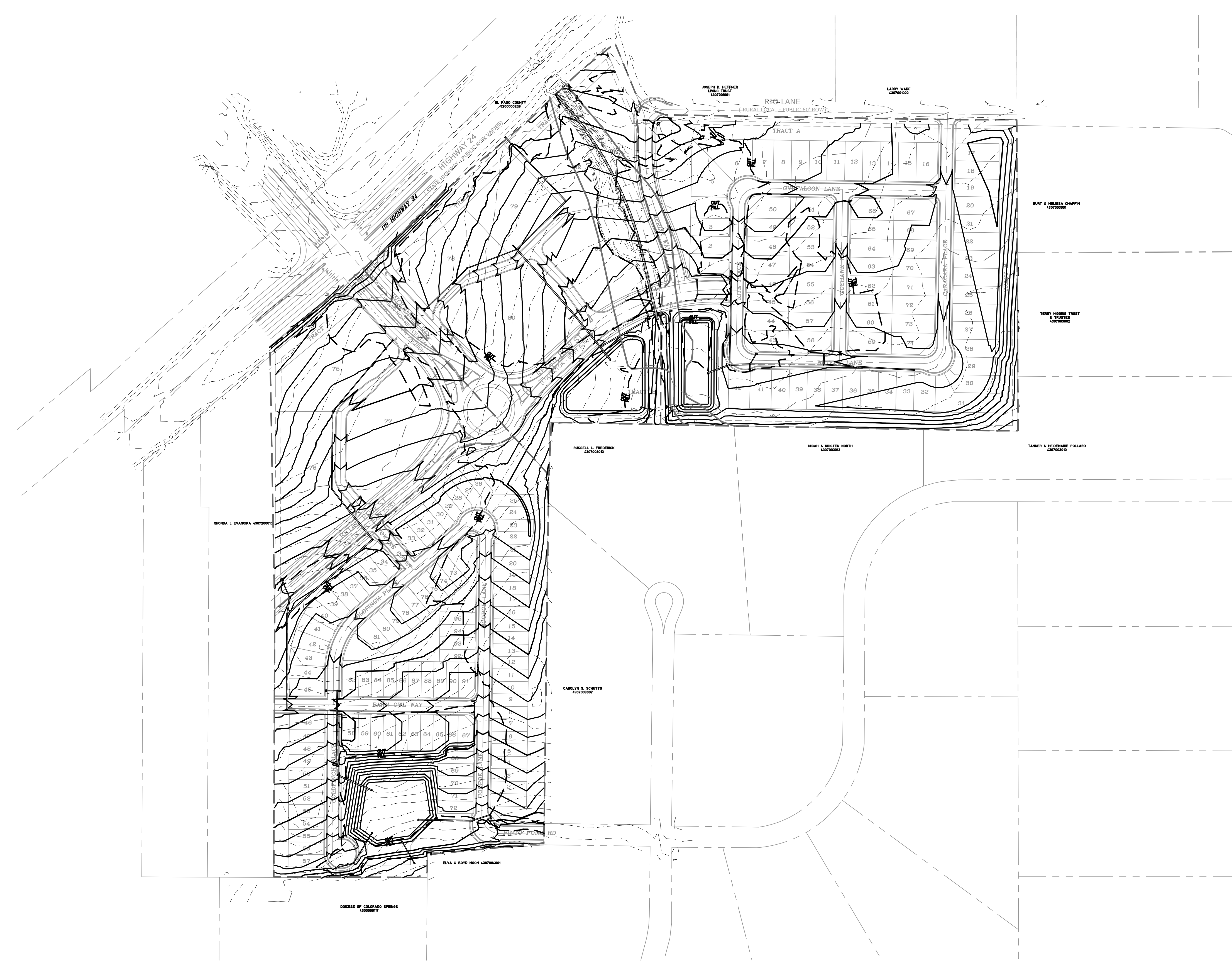
PROJECT NO. 21604-00CSCV
DRAWING NO.

CVR

SHEET: 1 OF 8



Know what's below.
Call before you dig.
CALL 3-BUSINESS DAYS IN ADVANCE BEFORE YOU DIG, GRADE, OR EXCAVATE FOR THE MARKING OF UNDERGROUND MEMBER UTILITIES.

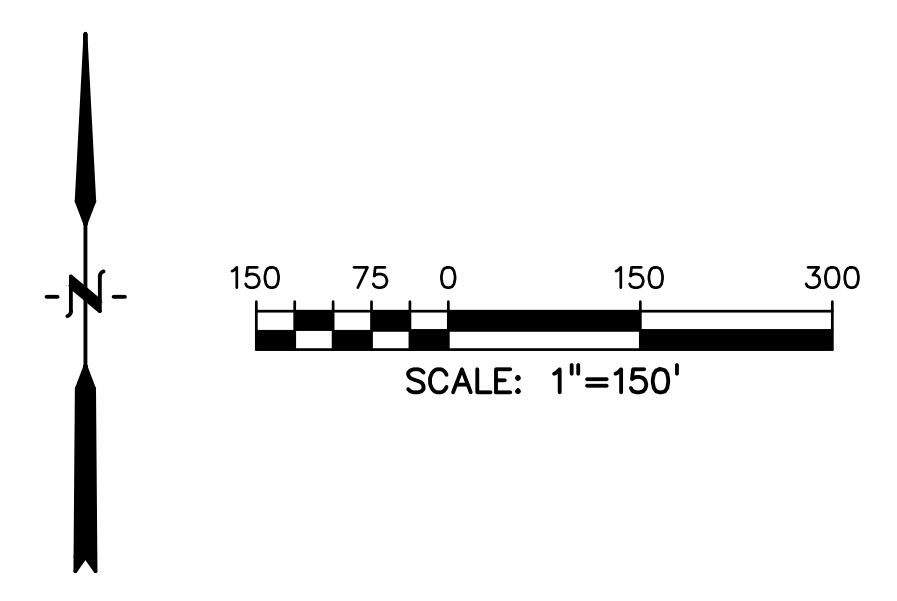


LEGEND

- PROPOSED INTERMEDIATE CONTOUR..... 5522
- PROPOSED INDEX CONTOUR..... 5520
- EX. INTERMEDIATE CONTOUR..... 5364
- EX. INDEX CONTOUR..... 5365
- DIRECTION OF FLOW..... ←
- HIGH POINT..... HP
- LOW POINT..... LP
- PROPOSED STORM SEWER..... [Symbol]
- PROPOSED INLET..... [Symbol]
- PROPOSED MANHOLE..... [Symbol]
- LIMITS OF DISTURBANCE/
CONSTRUCTION SITE BOUNDARY..... [Symbol]
- CUT/FILL LINE..... [Symbol]
- INITIAL STOCKPILE..... [Symbol] (SEE DETAIL SHEET 6)
- INITIAL INLET PROTECTION..... [Symbol] (SEE DETAIL SHEET 5)
- INITIAL SILT FENCE..... [Symbol] (SEE DETAIL SHEET 6)
- INITIAL CONCRETE WASHOUT AREA..... [Symbol] (SEE DETAIL SHEET 6)
- INITIAL VEHICLE TRACKING CONTROL..... [Symbol] (SEE DETAIL SHEET 5)
- INITIAL STRAW BALE CHECK DAM..... [Symbol] (SEE DETAIL SHEET 5)
- INITIAL STABILIZED STAGING AREA..... [Symbol] (SEE DETAIL SHEET 6)

Show 100-yr floodplain
linestyle in legend.

- NOTES:
1. WASTE DISPOSAL BIN LOCATIONS ARE TBD AND WILL BE ADDED TO THE SWMP ONCE DETERMINED BY THE CONTRACTOR.
 2. ONSITE LOCATION OF THE SWMP IS TBD AND WILL BE ADDED TO THE SWMP ONCE DETERMINED BY THE CONTRACTOR.
 3. THE NEED FOR DEWATERING IS NOT ANTICIPATED. IN THE EVENT THAT DEWATERING BECOMES NECESSARY THE CONTRACTOR, WITH INPUT FROM THE COUNTY STORMWATER INSPECTOR, WILL DESIGN THE LOCATIONS OF DIVERSION, PUMP & DISCHARGES.
 4. NO BATCH PLANTS WILL BE UTILIZED ONSITE.



PREPARED BY:



DREXEL, BARRELL & CO.
Engineers + Surveyors
3 SOUTH 7TH STREET
COLORADO SPGS, COLORADO 80905
CONTACT: TIM D. McCONNELL, P.E.
(719) 260-0887
BOULDER • COLORADO SPRINGS • GREELEY

CLIENT:

FALCON FIELD, LLC.
3230 ELECTRA DR N.
COLORADO SPRINGS, CO 80906
(719) 475-7474
CONTACT: PJ ANDERSON

CONSTRUCTION DOCUMENTS FOR:

**THE COMMONS AT
FALCON FIELD**
12445 RIO LANE, AND VACANT LAND
PEYTON, EL PASO COUNTY, COLORADO

ISSUE	DATE
INITIAL ISSUE	3/16/23

DESIGNED BY: KGV
DRAWN BY: KGV
CHECKED BY: TDM
FILE NAME: 21604-01EC1-4

PREPARED UNDER MY DIRECT
SUPERVISION FOR AND ON
BEHALF OF
DREXEL, BARRELL & CO.

DRAWING SCALE:
HORIZONTAL: 1" = 150'
VERTICAL: N/A

**OVERALL
EROSION CONTROL
PLAN**

PROJECT NO. 21604-00CSCV
DRAWING NO.

OVR



SWMP Checklist Item 4 & 5. Show and clearly label final stabilization measures on GEC Plans.

GEC Checklist Item i: Show existing vegetation or add a note. Typical for all GEC plan sheets.

Provide temporary sediment ponds for disturbed drainage areas greater than 1 ac per GEC Checklist and SWMP discussion.

Per SWMP, add surface roughening or note regarding surface roughening to the plans per the SWMP text discussion.

LEGEND

- PROPOSED INTERMEDIATE CONTOUR 5522
- PROPOSED INDEX CONTOUR 5520
- EX. INTERMEDIATE CONTOUR 5364
- EX. INDEX CONTOUR 5365
- DIRECTION OF FLOW ←
- HIGH POINT HP
- LOW POINT LP
- PROPOSED STORM SEWER ————
- PROPOSED INLET ■
- PROPOSED MANHOLE ●
- LIMITS OF DISTURBANCE/
CONSTRUCTION SITE BOUNDARY - - - -
- CUT/FILL LINE ————

- interim INITIAL STOCKPILE (SEE DETAIL SHEET 6) [SP]
- interim INITIAL INLET PROTECTION (SEE DETAIL SHEET 5) [IP]
- INITIAL SILT FENCE (SEE DETAIL SHEET 6) [SF]
- interim INITIAL CONCRETE WASHOUT AREA (SEE DETAIL SHEET 6) [CWA]
- INITIAL VEHICLE TRACKING CONTROL (SEE DETAIL SHEET 5) [VTC]
- interim INITIAL STRAW BALE CHECK DAM (SEE DETAIL SHEET 5) [CD]
- INITIAL STABILIZED STAGING AREA (SEE DETAIL SHEET 6) [SSA]

GEC Checklist Item V. Label all proposed temporary construction BMPs by phase of implementation (initial, interim, final). True for all sheets.

NOTES:

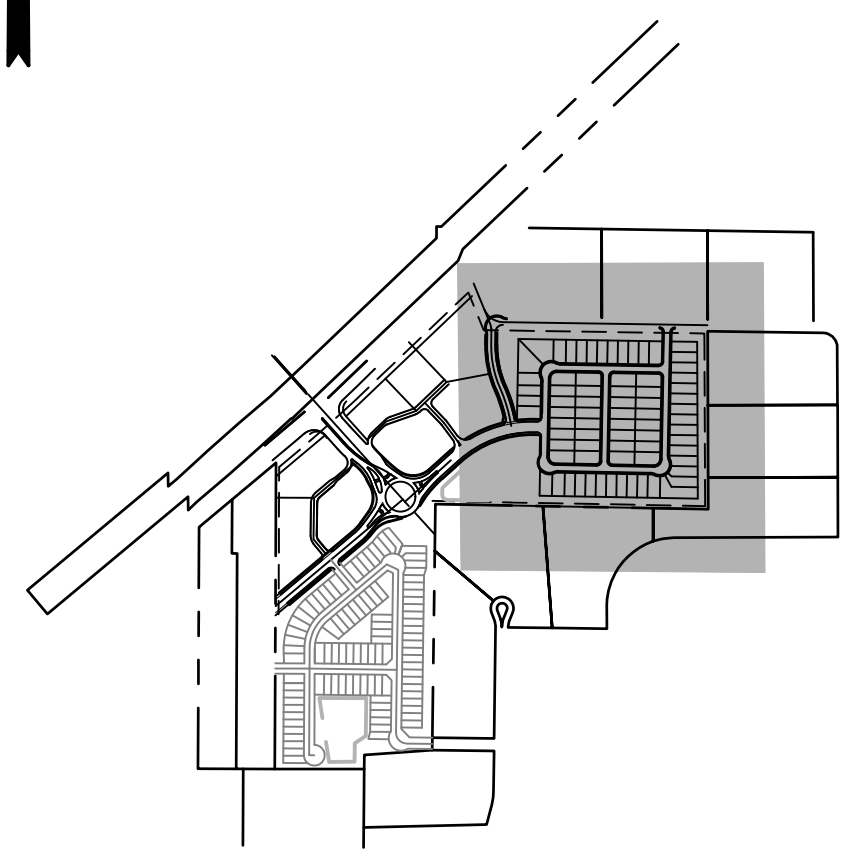
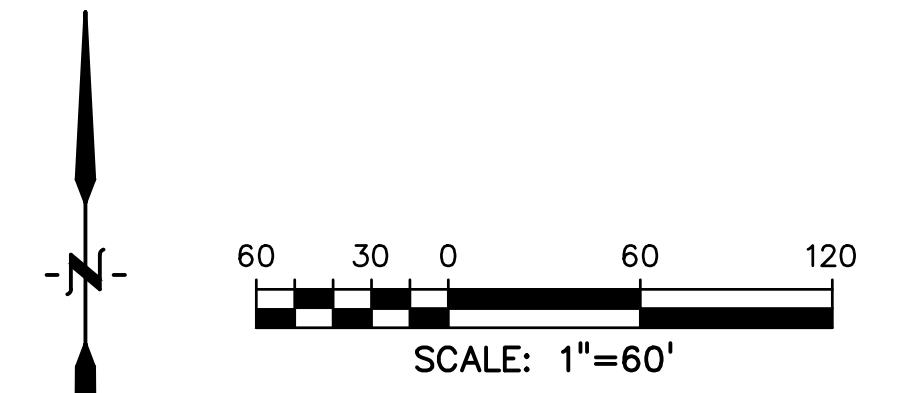
1. WASTE DISPOSAL BIN LOCATIONS ARE TBD AND WILL BE ADDED TO THE SWMP ONCE DETERMINED BY THE CONTRACTOR.
2. ONSITE LOCATION OF THE SWMP IS TBD AND WILL BE ADDED TO THE SWMP ONCE DETERMINED BY THE CONTRACTOR.
3. THE NEED FOR DEWATERING IS NOT ANTICIPATED. IN THE EVENT THAT DEWATERING BECOMES NECESSARY THE CONTRACTOR, WITH INPUT FROM THE COUNTY STORMWATER INSPECTOR, WILL DESIGN THE LOCATIONS OF DIVERSION, PUMP & DISCHARGES.
4. NO BATCH PLANTS WILL BE UTILIZED ONSITE.

BURT & MELISSA CHAFFIN
4307003001

TERRY HIGGINS TRUST & TRUSTEE
4307003002

TANNER & HEIDEMARIE POLLARD
4307003010

MICAH & KRISTEN NORTH
4307003012



PREPARED BY:



DREXEL, BARRELL & CO.
Engineers & Surveyors
3 SOUTH 7TH STREET
COLORADO SPGS, COLORADO 80905
CONTACT: TIM D. MCCONNELL, P.E.
(719) 475-7474
BOULDER • COLORADO SPRINGS • GREELEY

CLIENT:

FALCON FIELD, LLC.
3230 ELECTRA DR. N.
COLORADO SPRINGS, CO 80906
(719) 475-7474
CONTACT: PJ ANDERSON

CONSTRUCTION DOCUMENTS FOR:
**THE COMMONS AT
FALCON FIELD**
12445 RIO LANE, AND VACANT LAND
PEYTON, EL PASO COUNTY, COLORADO

ISSUE	DATE
INITIAL ISSUE	3/16/23

DESIGNED BY: KGV
DRAWN BY: KGV
CHECKED BY: TDM
FILE NAME: 21604-01EC1-4

PREPARED UNDER MY DIRECT SUPERVISION FOR AND ON BEHALF OF DREXEL, BARRELL & CO.

DRAWING SCALE:
HORIZONTAL: 1" = 60'
VERTICAL: N/A

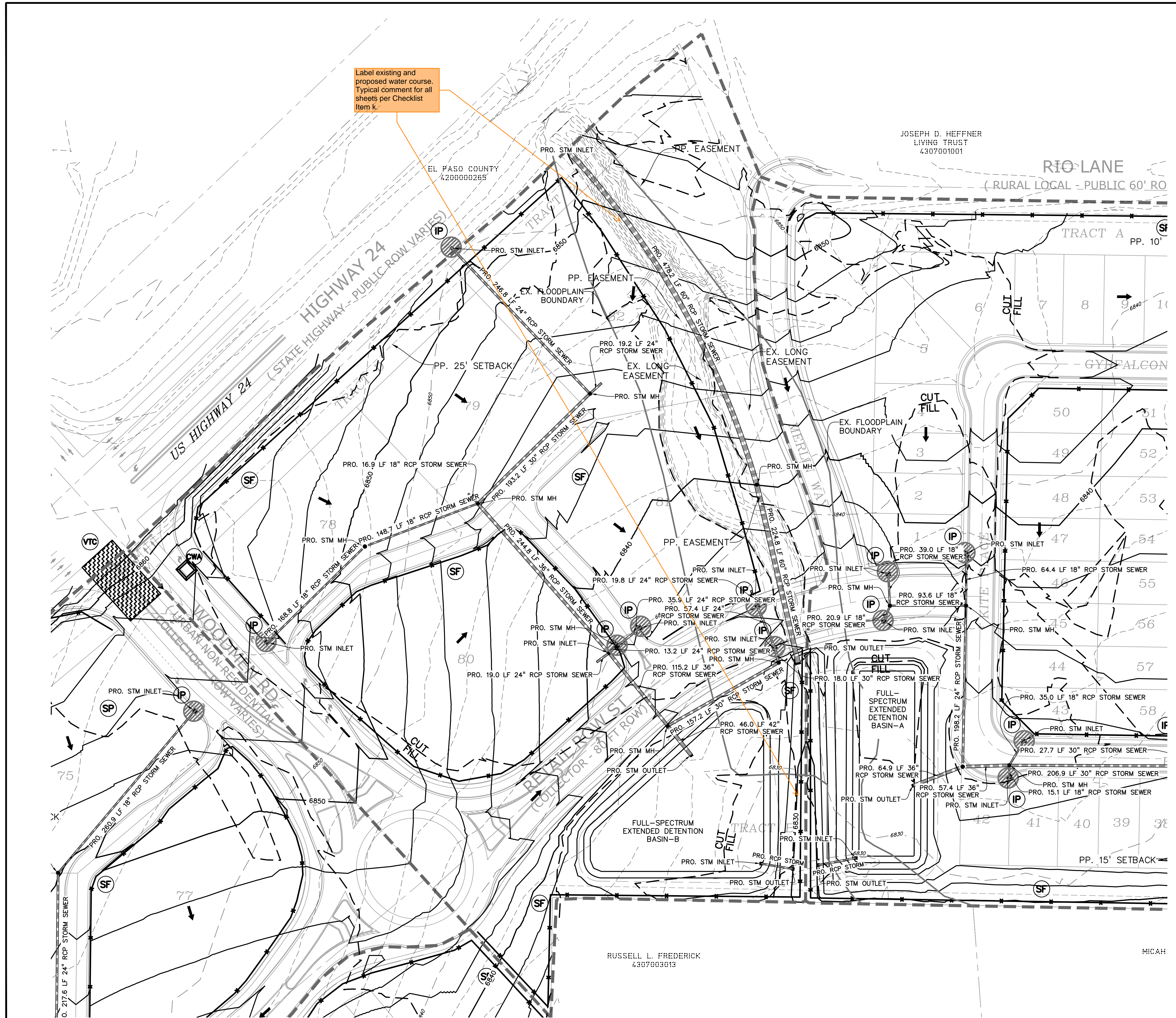
**INITIAL/INTERIM
EROSION CONTROL
PLAN**

PROJECT NO. 21604-00CSCV
DRAWING NO.

EC-1

SHEET: 3 OF 8





Label existing and proposed water course. Typical comment for all sheets per Checklist Item k.

JOSEPH D. HEFFNER
LIVING TRUST
4307001001

RUSSELL L. FREDERICK
4307003013

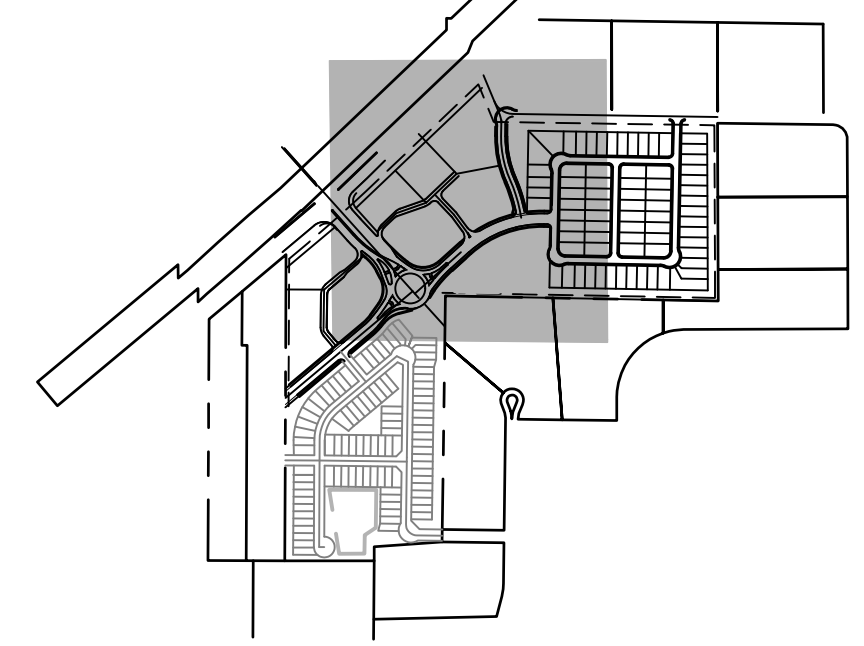
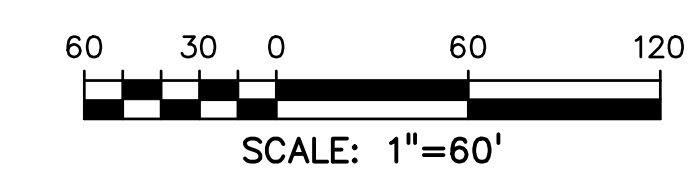
MICAH

LEGEND

- PROPOSED INTERMEDIATE CONTOUR 5522
- PROPOSED INDEX CONTOUR 5520
- EX. INTERMEDIATE CONTOUR 5364
- EX. INDEX CONTOUR 5365
- DIRECTION OF FLOW ←
- HIGH POINT HP
- LOW POINT LP
- PROPOSED STORM SEWER [Symbol]
- PROPOSED INLET [Symbol]
- PROPOSED MANHOLE [Symbol]
- LIMITS OF DISTURBANCE/
CONSTRUCTION SITE BOUNDARY [Symbol]
- CUT/FILL LINE [Symbol]
- INITIAL STOCKPILE [Symbol] (SEE DETAIL SHEET 6)
- INITIAL INLET PROTECTION [Symbol] (SEE DETAIL SHEET 5)
- INITIAL SILT FENCE [Symbol] (SEE DETAIL SHEET 6)
- INITIAL CONCRETE WASHOUT AREA [Symbol] (SEE DETAIL SHEET 6)
- INITIAL VEHICLE TRACKING CONTROL [Symbol] (SEE DETAIL SHEET 5)
- INITIAL STRAW BALE CHECK DAM [Symbol] (SEE DETAIL SHEET 5)
- INITIAL STABILIZED STAGING AREA [Symbol] (SEE DETAIL SHEET 6)

NOTES:

1. WASTE DISPOSAL BIN LOCATIONS ARE TBD AND WILL BE ADDED TO THE SWMP ONCE DETERMINED BY THE CONTRACTOR.
2. ONSITE LOCATION OF THE SWMP IS TBD AND WILL BE ADDED TO THE SWMP ONCE DETERMINED BY THE CONTRACTOR.
3. THE NEED FOR DEWATERING IS NOT ANTICIPATED. IN THE EVENT THAT DEWATERING BECOMES NECESSARY THE CONTRACTOR, WITH INPUT FROM THE COUNTY STORMWATER INSPECTOR, WILL DESIGN THE LOCATIONS OF DIVERSION, PUMP & DISCHARGES.
4. NO BATCH PLANTS WILL BE UTILIZED ONSITE.



PREPARED BY:



DREXEL, BARRELL & CO.
Engineers & Surveyors
3 SOUTH 7TH STREET
COLORADO SPGS, COLORADO 80905
CONTACT: TIM D. MCCONNELL, P.E.
(719) 260-0887
BOULDER • COLORADO SPRINGS • GREELEY

CLIENT:

FALCON FIELD, LLC.
3230 ELECTRA DR N.
COLORADO SPRINGS, CO 80906
(719) 475-7474
CONTACT: PJ ANDERSON

CONSTRUCTION DOCUMENTS FOR:

**THE COMMONS AT
FALCON FIELD**
12445 RIO LANE, AND VACANT LAND
PEYTON, EL PASO COUNTY, COLORADO

ISSUE	DATE
INITIAL ISSUE	3/16/23

DESIGNED BY: KGV
DRAWN BY: KGV
CHECKED BY: TDM
FILE NAME: 21604-01EC1-4

PREPARED UNDER MY DIRECT SUPERVISION FOR AND ON BEHALF OF DREXEL, BARRELL & CO.

DRAWING SCALE:
HORIZONTAL: 1" = 60'
VERTICAL: N/A

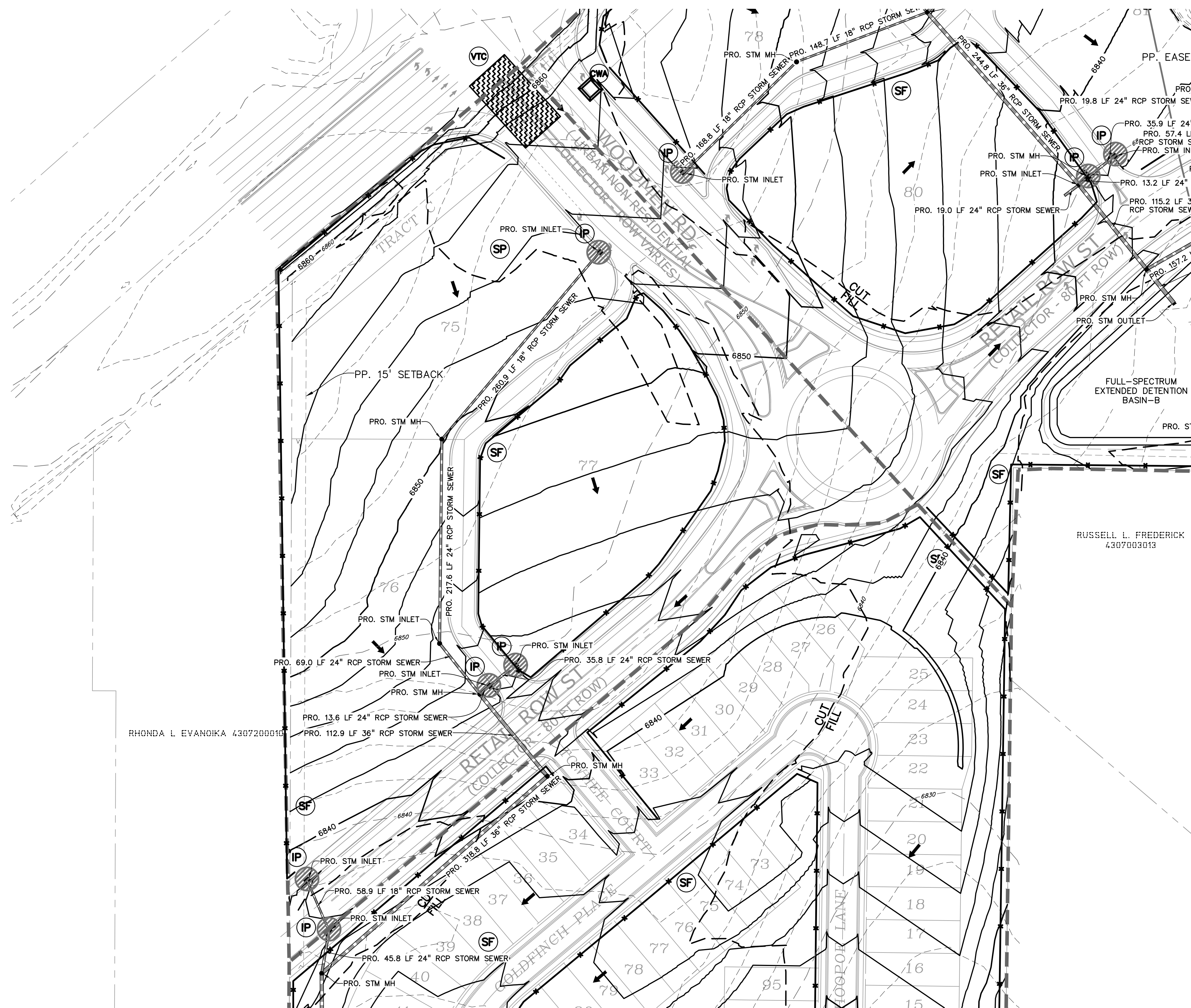
**INITIAL/INTERIM
EROSION CONTROL
PLAN**

PROJECT NO. 21604-00CSV
DRAWING NO.

EC-2



811 Know what's below.
Call before you dig.
CALL 3-BUSINESS DAYS IN ADVANCE BEFORE YOU DIG, GRADE, OR EXCAVATE FOR THE MARKING OF UNDERGROUND MEMBER UTILITIES.



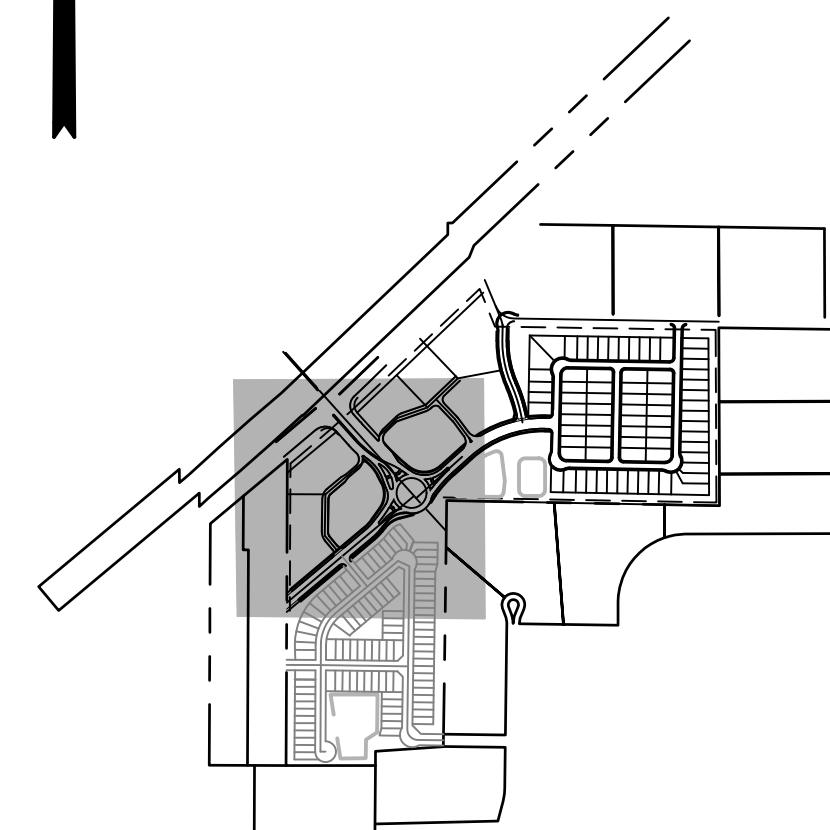
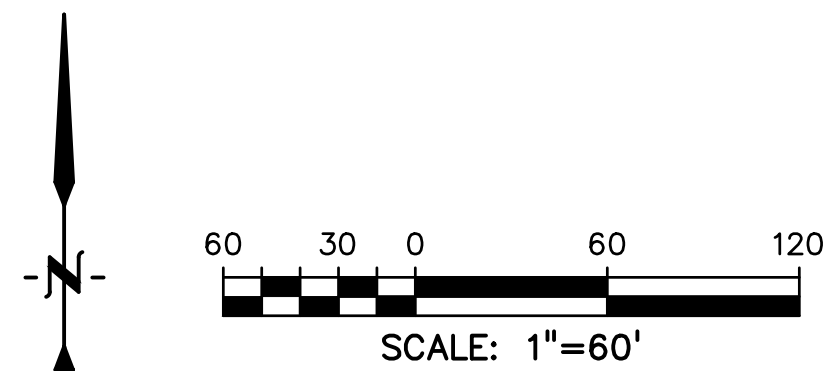
RHONDA L. EVANOVA 4307200810

RUSSELL L. FREDERICK
4307003013

LEGEND

- PROPOSED INTERMEDIATE CONTOUR..... 5522
- PROPOSED INDEX CONTOUR..... 5520
- EX. INTERMEDIATE CONTOUR..... 5364
- EX. INDEX CONTOUR..... 5365
- DIRECTION OF FLOW..... ←
- HIGH POINT..... HP
- LOW POINT..... LP
- PROPOSED STORM SEWER.....
- PROPOSED INLET.....
- PROPOSED MANHOLE.....
- LIMITS OF DISTURBANCE/
CONSTRUCTION SITE BOUNDARY.....
- CUT/FILL LINE..... CUT
FILL
- INITIAL STOCKPILE..... (SEE DETAIL SHEET 6)
- INITIAL INLET PROTECTION..... (SEE DETAIL SHEET 5)
- INITIAL SILT FENCE..... (SEE DETAIL SHEET 6)
- INITIAL CONCRETE WASHOUT AREA..... (SEE DETAIL SHEET 6)
- INITIAL VEHICLE TRACKING CONTROL..... (SEE DETAIL SHEET 5)
- INITIAL STRAW BALE CHECK DAM..... (SEE DETAIL SHEET 5)
- INITIAL STABILIZED STAGING AREA..... (SEE DETAIL SHEET 6)

- NOTES:
1. WASTE DISPOSAL BIN LOCATIONS ARE TBD AND WILL BE ADDED TO THE SWMP ONCE DETERMINED BY THE CONTRACTOR.
 2. ONSITE LOCATION OF THE SWMP IS TBD AND WILL BE ADDED TO THE SWMP ONCE DETERMINED BY THE CONTRACTOR.
 3. THE NEED FOR DEWATERING IS NOT ANTICIPATED. IN THE EVENT THAT DEWATERING BECOMES NECESSARY THE CONTRACTOR, WITH INPUT FROM THE COUNTY STORMWATER INSPECTOR, WILL DESIGN THE LOCATIONS OF DIVERSION, PUMP & DISCHARGES.
 4. NO BATCH PLANTS WILL BE UTILIZED ONSITE.



811 Know what's below.
Call before you dig.
CALL 3-BUSINESS DAYS IN ADVANCE
BEFORE YOU DIG, GRADE, OR
EXCAVATE FOR THE MARKING OF
UNDERGROUND MEMBER UTILITIES.

PREPARED BY:

DREXEL, BARRELL & CO.
Engineers • Surveyors
3 SOUTH 7TH STREET
COLORADO SPGS, COLORADO 80905
CONTACT: TIM D. MCCONNELL, P.E.
(719) 475-7474
BOULDER • COLORADO SPRINGS • GREELEY

CLIENT:

FALCON FIELD, LLC.
3230 ELECTRA DR N.
COLORADO SPRINGS, CO 80906
(719) 475-7474
CONTACT: PJ ANDERSON

CONSTRUCTION DOCUMENTS FOR:

**THE COMMONS AT
FALCON FIELD**
12445 RIO LANE, AND VACANT LAND
PEYTON, EL PASO COUNTY, COLORADO

ISSUE	DATE
INITIAL ISSUE	3/16/23

DESIGNED BY: KGV
DRAWN BY: KGV
CHECKED BY: TDM
FILE NAME: 21604-01EC1-4

PREPARED UNDER MY DIRECT SUPERVISION FOR AND ON BEHALF OF DREXEL, BARRELL & CO.

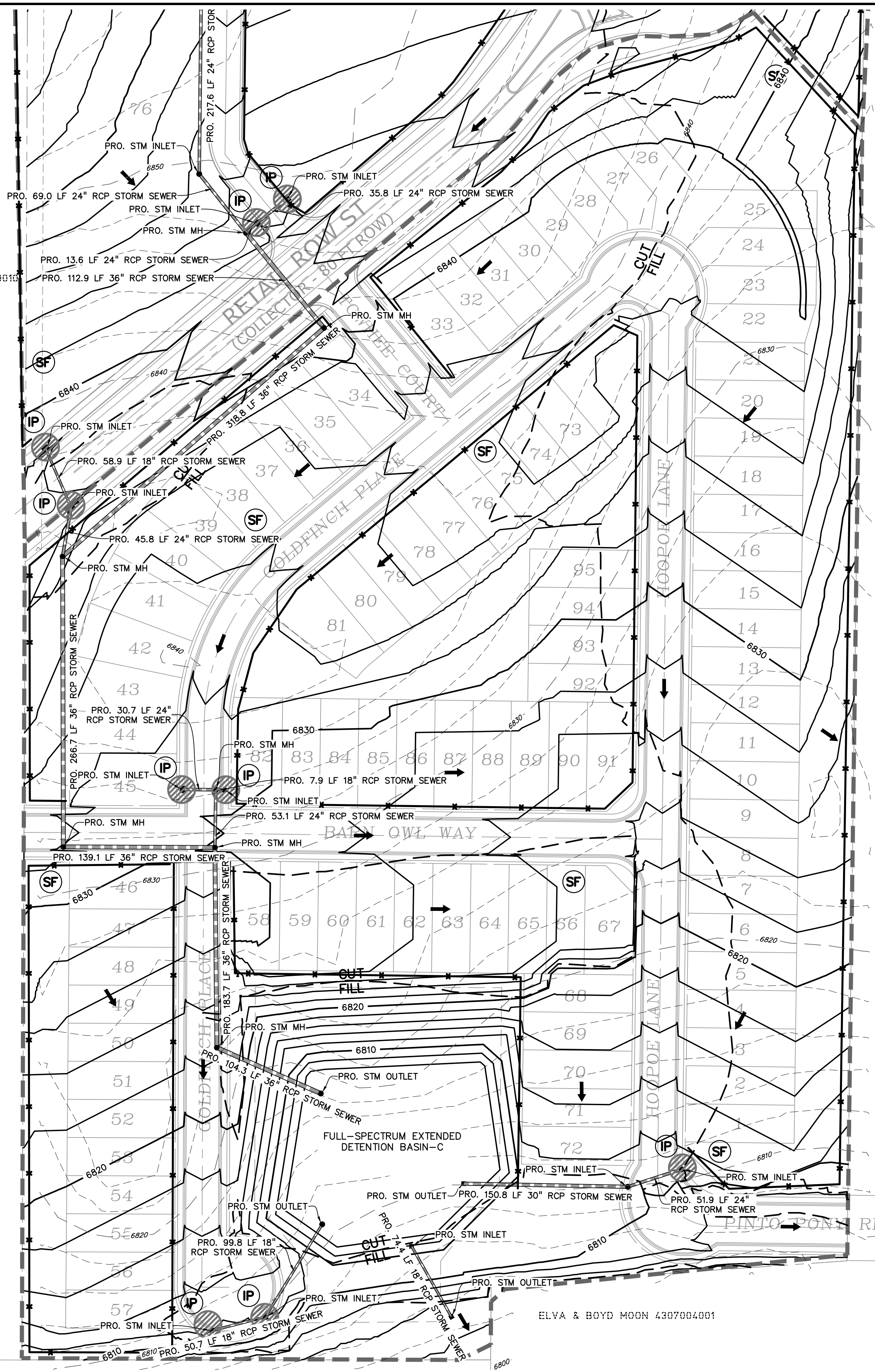
DRAWING SCALE:
HORIZONTAL: 1" = 60'
VERTICAL: N/A

**INITIAL/INTERIM
EROSION CONTROL
PLAN**

PROJECT NO. 21604-00CSCV
DRAWING NO.

EC-3

SHEET: 5 OF 8



RHONDA L. EVANOKA 4307200010

RUSSELL L. FREDERICK
4307003013

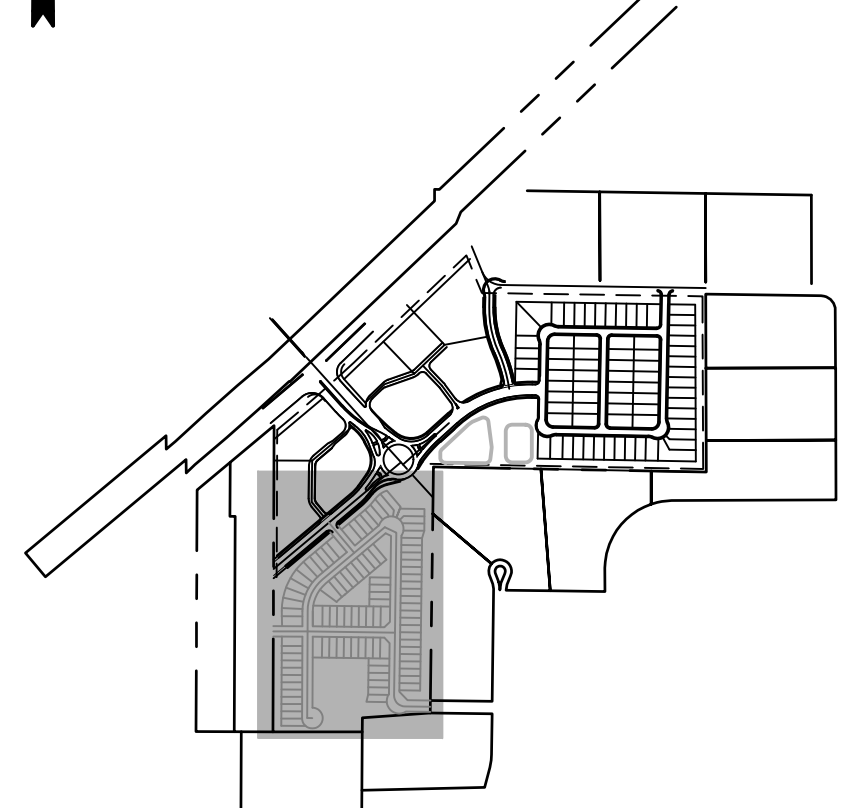
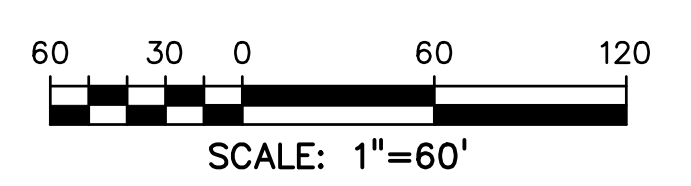
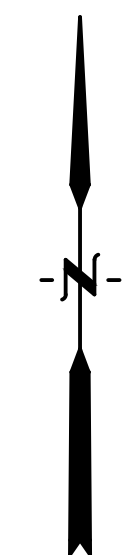
CAROLYN S. SCHUTTS
4307003007

ELVA & BOYD MOON 4307004001

LEGEND

- PROPOSED INTERMEDIATE CONTOUR 5522
- PROPOSED INDEX CONTOUR 5520
- EX. INTERMEDIATE CONTOUR 5364
- EX. INDEX CONTOUR 5365
- DIRECTION OF FLOW ←
- HIGH POINT HP
- LOW POINT LP
- PROPOSED STORM SEWER ————
- PROPOSED INLET ————
- PROPOSED MANHOLE ●
- LIMITS OF DISTURBANCE/
CONSTRUCTION SITE BOUNDARY - - - - -
- CUT/FILL LINE - - - - -
- INITIAL STOCKPILE (SEE DETAIL SHEET 6) **SP**
- INITIAL INLET PROTECTION (SEE DETAIL SHEET 5) **IP**
- INITIAL SILT FENCE (SEE DETAIL SHEET 6) **SF**
- INITIAL CONCRETE WASHOUT AREA (SEE DETAIL SHEET 6) **CWA**
- INITIAL VEHICLE TRACKING CONTROL (SEE DETAIL SHEET 5) **VTC**
- INITIAL STRAW BALE CHECK DAM (SEE DETAIL SHEET 5) **CD**
- INITIAL STABILIZED STAGING AREA (SEE DETAIL SHEET 6) **SSA**

- NOTES:
- WASTE DISPOSAL BIN LOCATIONS ARE TBD AND WILL BE ADDED TO THE SWMP ONCE DETERMINED BY THE CONTRACTOR.
 - ONSITE LOCATION OF THE SWMP IS TBD AND WILL BE ADDED TO THE SWMP ONCE DETERMINED BY THE CONTRACTOR.
 - THE NEED FOR DEWATERING IS NOT ANTICIPATED. IN THE EVENT THAT DEWATERING BECOMES NECESSARY THE CONTRACTOR, WITH INPUT FROM THE COUNTY STORMWATER INSPECTOR, WILL DESIGN THE LOCATIONS OF DIVERSION, PUMP & DISCHARGES.
 - NO BATCH PLANTS WILL BE UTILIZED ONSITE.



**811 Know what's below.
Call before you dig.**
CALL 3-BUSINESS DAYS IN ADVANCE BEFORE YOU DIG, GRADE, OR EXCAVATE FOR THE MARKING OF UNDERGROUND MEMBER UTILITIES.

PREPARED BY:



DREXEL, BARRELL & CO.
Engineers & Surveyors
3 SOUTH 7TH STREET
COLORADO SPGS, COLORADO 80905
CONTACT: TIM D. McCONNELL, P.E.
(719) 260-0887
BOULDER • COLORADO SPRINGS • GREELEY

CLIENT:

FALCON FIELD, LLC.

3230 ELECTRA DR N.
COLORADO SPRINGS, CO 80906
(719) 475-7474
CONTACT: PJ ANDERSON

CONSTRUCTION DOCUMENTS FOR:

**THE COMMONS AT
FALCON FIELD**
12445 RIO LANE, AND VACANT LAND
PEYTON, EL PASO COUNTY, COLORADO

ISSUE	DATE
INITIAL ISSUE	3/16/23

DESIGNED BY:	KGV
DRAWN BY:	KGV
CHECKED BY:	TDM
FILE NAME:	21604-01EC1-4

PREPARED UNDER MY DIRECT SUPERVISION FOR AND ON BEHALF OF
DREXEL, BARRELL & CO.

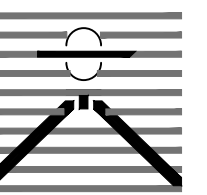
DRAWING SCALE:
HORIZONTAL: 1" = 60'
VERTICAL: N/A

**INITIAL/INTERIM
EROSION CONTROL
PLAN**

PROJECT NO. 21604-00CSCV
DRAWING NO.

EC-4

PREPARED BY:



DREXEL, BARRELL & CO.
Engineers • Surveyors
3 SOUTH 7TH STREET
COLORADO SPGS, COLORADO 80905
CONTACT: TIM D. MCCONNELL, P.E.
(719) 475-7474
BOULDER • COLORADO SPRINGS • GREELEY

CLIENT:

FALCON FIELD, LLC.

3230 ELECTRA DR N.
COLORADO SPRINGS, CO 80906
(719) 475-7474
CONTACT: PJ ANDERSON

CONSTRUCTION DOCUMENTS FOR:
THE COMMONS AT
FALCON FIELD
12445 RIO LANE, AND VACANT LAND
PEYTON, EL PASO COUNTY, COLORADO

Table with 2 columns: ISSUE, DATE. Row 1: INITIAL ISSUE, 3/16/23

DESIGNED BY: TDM
DRAWN BY: KGV
CHECKED BY: TDM

FILE NAME: 21604-00ECDT1-2

PREPARED UNDER MY DIRECT SUPERVISION FOR AND ON BEHALF OF DREXEL, BARRELL & CO.

DRAWING SCALE:
HORIZONTAL: N/A
VERTICAL: N/A

EROSION CONTROL DETAILS

PROJECT NO. 21604-00CSCV
DRAWING NO.

DT-1

SHEET: 7 OF 8

SC-6 Inlet Protection (IP)

GENERAL INLET PROTECTION INSTALLATION NOTES

- 1. SEE PLAN VIEW FOR:
- LOCATION OF INLET PROTECTION
- TYPE OF INLET PROTECTION (IP-1, IP-2, IP-3, IP-4, IP-5, IP-6)
2. INLET PROTECTION SHALL BE INSTALLED PROMPTLY AFTER INLET CONSTRUCTION OR PAVING IS COMPLETE (TYPICALLY WITHIN 48 HOURS). IF A RAINFALL/MUDFALL EVENT IS FORECAST, INSTALL INLET PROTECTION PRIOR TO ONSET OF EVENT.
3. MANY JURISDICTIONS HAVE BMP DETAILS THAT VARY FROM USFCO STANDARD DETAILS. CONSULT WITH LOCAL JURISDICTIONS AS TO WHICH DETAIL SHOULD BE USED WHEN DIFFERENCES ARE NOTED.

INLET PROTECTION MAINTENANCE NOTES

- 1. INSPECT BMPs EACH WORKDAY AND MAINTAIN THEM IN EFFECTIVE OPERATING CONDITION. MAINTENANCE OF BMPs SHOULD BE PROACTIVE, NOT REACTIVE. INSPECT BMPs AS SOON AS POSSIBLE (AND ALWAYS WITHIN 24 HOURS) FOLLOWING A STORM THAT CAUSES SURFACE EROSION AND PERFORM NECESSARY MAINTENANCE.
2. FREQUENT OBSERVATIONS AND MAINTENANCE ARE NECESSARY TO MAINTAIN BMPs IN EFFECTIVE OPERATING CONDITION. INSPECTIONS AND CORRECTIVE MEASURES SHOULD BE DOCUMENTED THOROUGHLY.
3. WHERE BMPs HAVE FAILED, REPAIR OR REPLACEMENT SHOULD BE INITIATED UPON DISCOVERY OF THE FAILURE.
4. SEDIMENT ACCUMULATED UPSTREAM OF INLET PROTECTION SHALL BE REMOVED AS NECESSARY TO MAINTAIN BMP EFFECTIVENESS, TYPICALLY WHEN SEDIMENT VOLUME REACHES 50% OF CAPACITY. A DEPTH OF 6" WHEN SILT FENCE IS USED, OR 4" OF THE HEIGHT FOR STRAW BALES.

- 5. INLET PROTECTION IS TO REMAIN IN PLACE UNTIL THE UPSTREAM DISTURBED AREA IS PERMANENTLY STABILIZED, UNLESS THE LOCAL JURISDICTION APPROVES EARLIER REMOVAL OF INLET PROTECTION IN STREETS.
6. WHEN INLET PROTECTION AT AREA INLETS IS REMOVED, THE DISTURBED AREA SHALL BE COVERED WITH TOP SOIL, SEEDS AND MULCHED, OR OTHERWISE STABILIZED IN A MANNER APPROVED BY THE LOCAL JURISDICTION.
(DETAILS ADAPTED FROM USFCO, COLORADO, NOT AVAILABLE IN AUTODO)

NOTE: MANY JURISDICTIONS HAVE BMP DETAILS THAT VARY FROM USFCO STANDARD DETAILS. CONSULT WITH LOCAL JURISDICTIONS AS TO WHICH DETAIL SHOULD BE USED WHEN DIFFERENCES ARE NOTED.

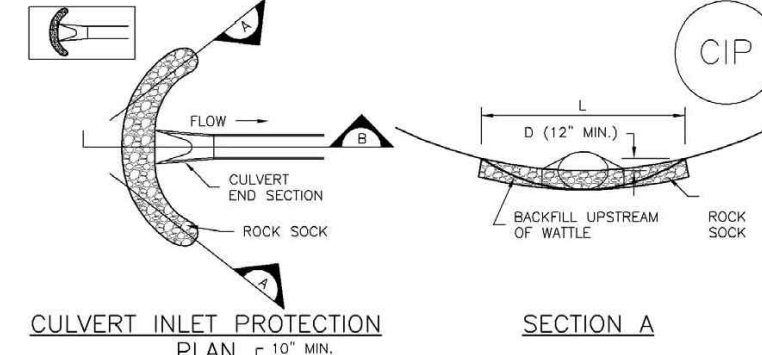
NOTE: THE DETAILS INCLUDED WITH THIS SHEET SHOW COMMONLY USED CONVENTIONAL METHODS OF INLET PROTECTION IN THE DENVER METROPOLITAN AREA. THERE ARE MANY PROPRIETARY INLET PROTECTION METHODS ON THE MARKET. USFCO MEMBER ENGINEERS MAY DISCOUNTAGE USE OF PROPRIETARY INLET PROTECTION; HOWEVER, IN THE EVENT PROPRIETARY METHODS ARE USED, THE APPROPRIATE DETAIL FROM THE MANUFACTURER MUST BE INCLUDED IN THE SWAMP AND THE BMP MUST BE INSTALLED AND MAINTAINED AS SHOWN IN THE MANUFACTURER'S DETAILS.

NOTE: SOME MUNICIPALITIES DISCOURAGE OR PROHIBIT THE USE OF STRAW BALES FOR INLET PROTECTION. CONSULT WITH LOCAL JURISDICTION TO DETERMINE IF STRAW BALE INLET PROTECTION IS ACCEPTABLE.
(DETAILS ADAPTED FROM USFCO, COLORADO, NOT AVAILABLE IN AUTODO)

NOTE: MANY JURISDICTIONS HAVE BMP DETAILS THAT VARY FROM USFCO STANDARD DETAILS. CONSULT WITH LOCAL JURISDICTIONS AS TO WHICH DETAIL SHOULD BE USED WHEN DIFFERENCES ARE NOTED.

IP-8 Urban Drainage and Flood Control District
Urban Storm Drainage Criteria Manual Volume 3 August 2013

Inlet Protection (IP) SC-6



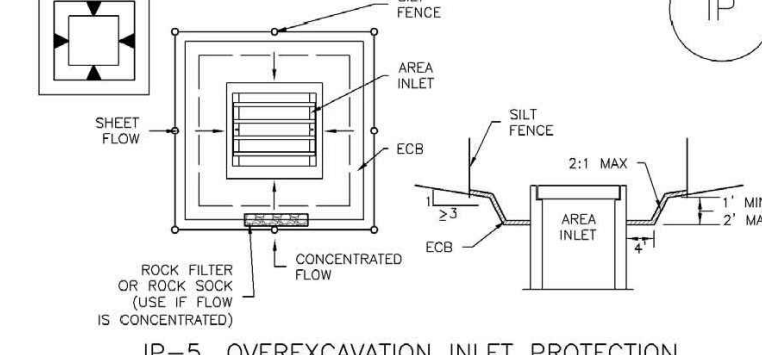
CIP-1 CULVERT INLET PROTECTION

- 1. SEE PLAN VIEW FOR:
- LOCATION OF CULVERT INLET PROTECTION
2. SEE ROCK SOCK DESIGN DETAIL FOR ROCK GRABBER REQUIREMENTS AND JOINTING DETAIL.
CULVERT INLET PROTECTION MAINTENANCE NOTES
1. INSPECT BMPs EACH WORKDAY AND MAINTAIN THEM IN EFFECTIVE OPERATING CONDITION. MAINTENANCE OF BMPs SHOULD BE PROACTIVE, NOT REACTIVE. INSPECT BMPs AS SOON AS POSSIBLE (AND ALWAYS WITHIN 24 HOURS) FOLLOWING A STORM THAT CAUSES SURFACE EROSION AND PERFORM NECESSARY MAINTENANCE.
2. FREQUENT OBSERVATIONS AND MAINTENANCE ARE NECESSARY TO MAINTAIN BMPs IN EFFECTIVE OPERATING CONDITION. INSPECTIONS AND CORRECTIVE MEASURES SHOULD BE DOCUMENTED THOROUGHLY.
3. WHERE BMPs HAVE FAILED, REPAIR OR REPLACEMENT SHOULD BE INITIATED UPON DISCOVERY OF THE FAILURE.
4. SEDIMENT ACCUMULATED UPSTREAM OF THE CULVERT SHALL BE REMOVED WHEN THE SEDIMENT DEPTH IS 8" OF THE HEIGHT OF THE ROCK SOCK.
5. CULVERT INLET PROTECTION SHALL REMAIN IN PLACE UNTIL THE UPSTREAM DISTURBED AREA IS PERMANENTLY STABILIZED AND APPROVED BY THE LOCAL JURISDICTION.
(DETAILS ADAPTED FROM USFCO, COLORADO, NOT AVAILABLE IN AUTODO)

NOTE: MANY JURISDICTIONS HAVE BMP DETAILS THAT VARY FROM USFCO STANDARD DETAILS. CONSULT WITH LOCAL JURISDICTIONS AS TO WHICH DETAIL SHOULD BE USED WHEN DIFFERENCES ARE NOTED.

IP-7 Urban Drainage and Flood Control District
Urban Storm Drainage Criteria Manual Volume 3 August 2013

SC-6 Inlet Protection (IP)



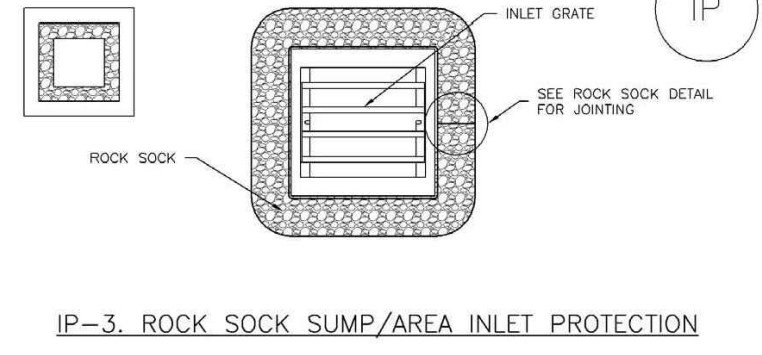
IP-5 OVEREXCAVATION INLET PROTECTION

- 1. THIS FORM OF INLET PROTECTION IS PRIMARILY APPLICABLE FOR SITES THAT HAVE NOT YET REACHED FINAL GRADE AND SHOULD BE USED ONLY FOR INLETS WITH A RELATIVELY SMALL CONTRIBUTING DRAINAGE AREA.
2. WHEN USING FOR CONCENTRATED FLOW, SHAPE BASIN IN 2:1 RATIO WITH LENGTH ORIENTED TOWARD DIRECTION OF FLOW.
3. SEDIMENT MUST BE PERIODICALLY REMOVED FROM THE OVEREXCAVATED AREA.
OVEREXCAVATION INLET PROTECTION INSTALLATION NOTES
1. SEE ROCK SOCK DESIGN DETAIL FOR INSTALLATION REQUIREMENTS.
2. STRAW MATS/SEDIMENT CONTROL LOSSES MAY BE USED IN PLACE OF ROCK SOCKS FOR INLETS IN PREVIOUS AREAS. INSTALL PER SEDIMENT CONTROL LOG DETAIL.
3. SEDIMENT TRACKS ONTO PAVED ROADS IS TO BE REMOVED THROUGHOUT THE DAY AND AT THE END OF THE DAY BY SHOVELING OR SHEEPING. SEDIMENT MAY NOT BE WASHED DOWN STORM SEWER DRAINAGE.
NOTE: MANY JURISDICTIONS HAVE BMP DETAILS THAT VARY FROM USFCO STANDARD DETAILS. CONSULT WITH LOCAL JURISDICTIONS AS TO WHICH DETAIL SHOULD BE USED WHEN DIFFERENCES ARE NOTED.

(DETAILS ADAPTED FROM USFCO, COLORADO, NOT AVAILABLE IN AUTODO)

IP-6 Urban Drainage and Flood Control District
Urban Storm Drainage Criteria Manual Volume 3 August 2013

Inlet Protection (IP) SC-6



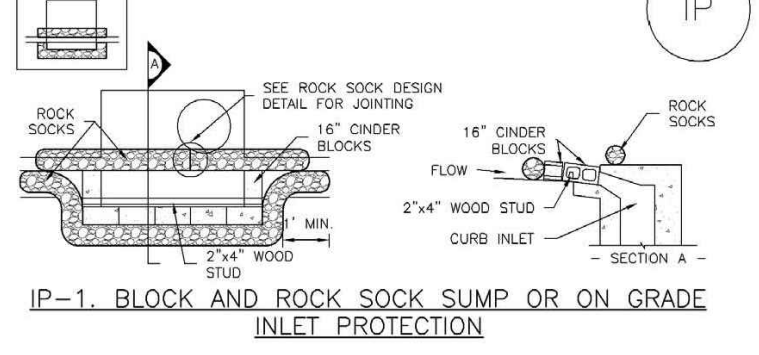
IP-3 ROCK SOCK SUMP/AREA INLET PROTECTION

- 1. SEE ROCK SOCK DESIGN DETAIL FOR INSTALLATION REQUIREMENTS.
2. POSTS SHALL BE PLACED AT EACH CORNER OF THE INLET AND AROUND THE EDGES AT A MAXIMUM SPACING OF 3 FEET.
3. STRAW MATS/SEDIMENT CONTROL LOSSES MAY BE USED IN PLACE OF SILT FENCE FOR INLETS IN PREVIOUS AREAS. INSTALL PER SEDIMENT CONTROL LOG DETAIL.
SILT FENCE INLET PROTECTION INSTALLATION NOTES
1. SEE SILT FENCE DESIGN DETAIL FOR INSTALLATION REQUIREMENTS.
2. POSTS SHALL BE PLACED AT EACH CORNER OF THE INLET AND AROUND THE EDGES AT A MAXIMUM SPACING OF 3 FEET.
3. STRAW MATS/SEDIMENT CONTROL LOSSES MAY BE USED IN PLACE OF SILT FENCE FOR INLETS IN PREVIOUS AREAS. INSTALL PER SEDIMENT CONTROL LOG DETAIL.
NOTE: MANY JURISDICTIONS HAVE BMP DETAILS THAT VARY FROM USFCO STANDARD DETAILS. CONSULT WITH LOCAL JURISDICTIONS AS TO WHICH DETAIL SHOULD BE USED WHEN DIFFERENCES ARE NOTED.

(DETAILS ADAPTED FROM USFCO, COLORADO, NOT AVAILABLE IN AUTODO)

IP-5 Urban Drainage and Flood Control District
Urban Storm Drainage Criteria Manual Volume 3 August 2013

SC-6 Inlet Protection (IP)



IP-1 BLOCK AND ROCK SOCK SUMP OR ON GRADE INLET PROTECTION

- 1. SEE ROCK SOCK DESIGN DETAIL FOR INSTALLATION REQUIREMENTS.
2. CONCRETE "CHOKER" BLOCKS SHALL BE LAD ON THEIR SIDES AROUND THE INLET IN A SINGLE ROW, ADJUTING ONE ANOTHER WITH THE OPEN END FACING AWAY FROM THE CURB.
3. GRVEL BASE SHALL BE PLACED AROUND CONCRETE BLOCKS, CLOSELY ADJUTING ONE ANOTHER AND JOINTED TOGETHER IN ACCORDANCE WITH ROCK SOCK DESIGN DETAIL.
CURB ROCK SOCK INLET PROTECTION INSTALLATION NOTES
1. SEE ROCK SOCK DESIGN DETAIL FOR INSTALLATION REQUIREMENTS.
2. PLACEMENT OF THE SOCK SHALL BE APPROXIMATELY 30 DEGREES FROM PERPENDICULAR IN THE OPPOSITE DIRECTION OF FLOW.
3. SOCKS ARE TO BE FLUSH WITH THE CURB AND SPACED A MINIMUM OF 1/2 FEET APART.
4. AT LEAST TWO CURB SOCKS IN SERIES ARE REQUIRED UPSTREAM OF ON-GRADE INLETS.

(DETAILS ADAPTED FROM USFCO, COLORADO, NOT AVAILABLE IN AUTODO)

IP-4 Urban Drainage and Flood Control District
Urban Storm Drainage Criteria Manual Volume 3 August 2013

EC-12 Check Dams (CD)

CHECK DAM INSTALLATION NOTES

- 1. SEE PLAN VIEW FOR:
- LOCATION OF CHECK DAMS
- CHECK DAM TYPE (CHECK DAM OR REINFORCED CHECK DAM)
- LENGTH (L), CREST LENGTH (CL), AND DEPTH (D)
2. CHECK DAMS INDICATED ON INITIAL SWAMP SHALL BE INSTALLED AFTER CONSTRUCTION FENCE, BUT PRIOR TO ANY UPSTREAM LAND DISTURBING ACTIVITIES.
3. RRAPs UTILIZED FOR CHECK DAMS SHOULD BE OF APPROPRIATE SIZE FOR THE APPLICATION. TYPICAL TYPES OF RRAP USED FOR CHECK DAMS ARE TYPE "M" (D50 12") OR TYPE "L" (D50 8").
4. RRAP PAV SHALL BE TRENCHED INTO THE GROUND A MINIMUM OF 1".
5. THE ENDS OF THE CHECK DAM SHALL BE A MINIMUM OF 1' 6" HIGHER THAN THE CENTER OF THE CHECK DAM.
CHECK DAM MAINTENANCE NOTES
1. INSPECT BMPs EACH WORKDAY AND MAINTAIN THEM IN EFFECTIVE OPERATING CONDITION. MAINTENANCE OF BMPs SHOULD BE PROACTIVE, NOT REACTIVE. INSPECT BMPs AS SOON AS POSSIBLE (AND ALWAYS WITHIN 24 HOURS) FOLLOWING A STORM THAT CAUSES SURFACE EROSION AND PERFORM NECESSARY MAINTENANCE.
2. FREQUENT OBSERVATIONS AND MAINTENANCE ARE NECESSARY TO MAINTAIN BMPs IN EFFECTIVE OPERATING CONDITION. INSPECTIONS AND CORRECTIVE MEASURES SHOULD BE DOCUMENTED THOROUGHLY.
3. WHERE BMPs HAVE FAILED, REPAIR OR REPLACEMENT SHOULD BE INITIATED UPON DISCOVERY OF THE FAILURE.
4. SEDIMENT ACCUMULATED UPSTREAM OF THE CHECK DAMS SHALL BE REMOVED WHEN THE SEDIMENT DEPTH IS 8" OF THE HEIGHT OF THE CREST.
5. CHECK DAMS ARE TO REMAIN IN PLACE UNTIL THE UPSTREAM DISTURBED AREA IS STABILIZED AND APPROVED BY THE LOCAL JURISDICTION.
6. WHEN CHECK DAMS ARE REMOVED, FLOWWAYS SHALL BE FILLED WITH SUITABLE COMPACTED BACKFILL. DISTURBED AREA SHALL BE SEEDS AND MULCHED AND COVERED WITH GEOTEXTILE OR OTHERWISE STABILIZED IN A MANNER APPROVED BY THE LOCAL JURISDICTION.
(DETAILS ADAPTED FROM USFCO, COLORADO, NOT AVAILABLE IN AUTODO)

NOTE: MANY JURISDICTIONS HAVE BMP DETAILS THAT VARY FROM USFCO STANDARD DETAILS. CONSULT WITH LOCAL JURISDICTIONS AS TO WHICH DETAIL SHOULD BE USED WHEN DIFFERENCES ARE NOTED.

CD-4 Urban Drainage and Flood Control District
Urban Storm Drainage Criteria Manual Volume 3 November 2010

SM-4 Vehicle Tracking Control (VTC)

STABILIZED CONSTRUCTION ENTRANCE/EXIT INSTALLATION NOTES

- 1. SEE PLAN VIEW FOR:
- LOCATION OF CONSTRUCTION ENTRANCE(S)/EXIT(S)
- TYPE OF CONSTRUCTION ENTRANCE(S)/EXIT(S) (WITH/WITHOUT WHEEL WASH, CONSTRUCTION MAT OR TRM)
2. CONSTRUCTION MAT OR TRM STABILIZED CONSTRUCTION ENTRANCES ARE ONLY TO BE USED ON SHORT DURATION PROJECTS (TYPICALLY RANGING FROM A WEEK TO A MONTH) WHERE THERE WILL BE LIMITED VEHICULAR ACCESS.
3. A STABILIZED CONSTRUCTION ENTRANCE/EXIT SHALL BE LOCATED AT ALL ACCESS POINTS WHERE VEHICLES ACCESS THE CONSTRUCTION SITE FROM PAVED RIGHT-OF-WAYS.
4. STABILIZED CONSTRUCTION ENTRANCE/EXIT SHALL BE INSTALLED PRIOR TO ANY LAND DISTURBING ACTIVITIES.
5. A NON-WOVEN GEOTEXTILE FABRIC SHALL BE PLACED UNDER THE STABILIZED CONSTRUCTION ENTRANCE/EXIT PRIOR TO THE PLACEMENT OF ROCK.
6. UNLESS OTHERWISE SPECIFIED BY LOCAL JURISDICTION, ROCK SHALL CONSIST OF DOT SECT. #703, AASHTO #3 COARSE AGGREGATE OR 6" (MINUS) ROCK.
STABILIZED CONSTRUCTION ENTRANCE/EXIT MAINTENANCE NOTES
1. INSPECT BMPs EACH WORKDAY AND MAINTAIN THEM IN EFFECTIVE OPERATING CONDITION. MAINTENANCE OF BMPs SHOULD BE PROACTIVE, NOT REACTIVE. INSPECT BMPs AS SOON AS POSSIBLE (AND ALWAYS WITHIN 24 HOURS) FOLLOWING A STORM THAT CAUSES SURFACE EROSION AND PERFORM NECESSARY MAINTENANCE.
2. FREQUENT OBSERVATIONS AND MAINTENANCE ARE NECESSARY TO MAINTAIN BMPs IN EFFECTIVE OPERATING CONDITION. INSPECTIONS AND CORRECTIVE MEASURES SHOULD BE DOCUMENTED THOROUGHLY.
3. WHERE BMPs HAVE FAILED, REPAIR OR REPLACEMENT SHOULD BE INITIATED UPON DISCOVERY OF THE FAILURE.
4. ROCK SHALL BE REAPPLIED OR REGRASSED AS NECESSARY TO THE STABILIZED ENTRANCE/EXIT TO MAINTAIN A CONSISTENT DEPTH.
5. SEDIMENT TRACKS ONTO PAVED ROADS IS TO BE REMOVED THROUGHOUT THE DAY AND AT THE END OF THE DAY BY SHOVELING OR SHEEPING. SEDIMENT MAY NOT BE WASHED DOWN STORM SEWER DRAINAGE.
NOTE: MANY JURISDICTIONS HAVE BMP DETAILS THAT VARY FROM USFCO STANDARD DETAILS. CONSULT WITH LOCAL JURISDICTIONS AS TO WHICH DETAIL SHOULD BE USED WHEN DIFFERENCES ARE NOTED.
(DETAILS ADAPTED FROM USFCO, COLORADO, NOT AVAILABLE IN AUTODO)

(DETAILS ADAPTED FROM USFCO, COLORADO, NOT AVAILABLE IN AUTODO)

City of Colorado Springs
Stormwater Quality
Figure CD-1
Check Dam
Construction Detail and Maintenance Requirements
3/20

SM-4 Vehicle Tracking Control (VTC)

STABILIZED CONSTRUCTION ENTRANCE/EXIT INSTALLATION NOTES

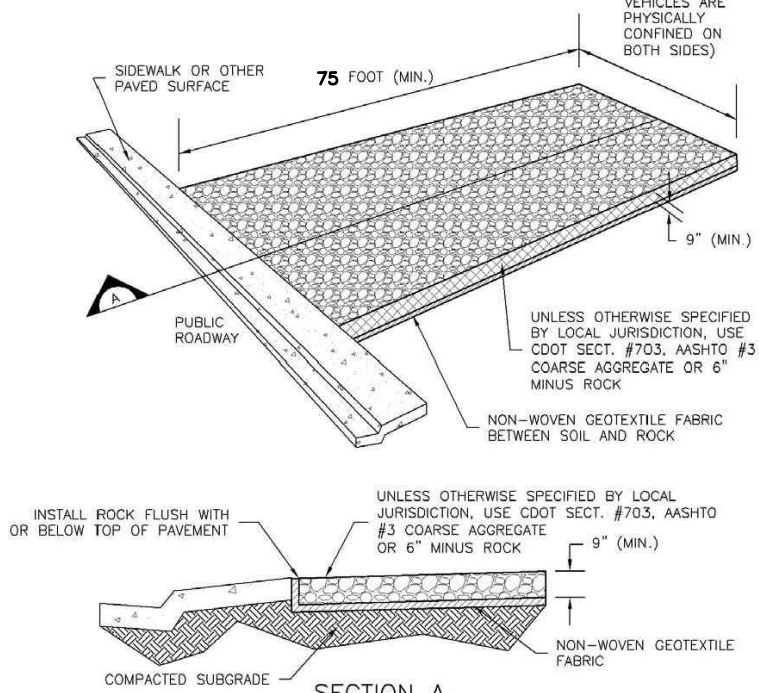
- 1. SEE PLAN VIEW FOR:
- LOCATION OF CONSTRUCTION ENTRANCE(S)/EXIT(S)
- TYPE OF CONSTRUCTION ENTRANCE(S)/EXIT(S) (WITH/WITHOUT WHEEL WASH, CONSTRUCTION MAT OR TRM)
2. CONSTRUCTION MAT OR TRM STABILIZED CONSTRUCTION ENTRANCES ARE ONLY TO BE USED ON SHORT DURATION PROJECTS (TYPICALLY RANGING FROM A WEEK TO A MONTH) WHERE THERE WILL BE LIMITED VEHICULAR ACCESS.
3. A STABILIZED CONSTRUCTION ENTRANCE/EXIT SHALL BE LOCATED AT ALL ACCESS POINTS WHERE VEHICLES ACCESS THE CONSTRUCTION SITE FROM PAVED RIGHT-OF-WAYS.
4. STABILIZED CONSTRUCTION ENTRANCE/EXIT SHALL BE INSTALLED PRIOR TO ANY LAND DISTURBING ACTIVITIES.
5. A NON-WOVEN GEOTEXTILE FABRIC SHALL BE PLACED UNDER THE STABILIZED CONSTRUCTION ENTRANCE/EXIT PRIOR TO THE PLACEMENT OF ROCK.
6. UNLESS OTHERWISE SPECIFIED BY LOCAL JURISDICTION, ROCK SHALL CONSIST OF DOT SECT. #703, AASHTO #3 COARSE AGGREGATE OR 6" (MINUS) ROCK.
STABILIZED CONSTRUCTION ENTRANCE/EXIT MAINTENANCE NOTES
1. INSPECT BMPs EACH WORKDAY AND MAINTAIN THEM IN EFFECTIVE OPERATING CONDITION. MAINTENANCE OF BMPs SHOULD BE PROACTIVE, NOT REACTIVE. INSPECT BMPs AS SOON AS POSSIBLE (AND ALWAYS WITHIN 24 HOURS) FOLLOWING A STORM THAT CAUSES SURFACE EROSION AND PERFORM NECESSARY MAINTENANCE.
2. FREQUENT OBSERVATIONS AND MAINTENANCE ARE NECESSARY TO MAINTAIN BMPs IN EFFECTIVE OPERATING CONDITION. INSPECTIONS AND CORRECTIVE MEASURES SHOULD BE DOCUMENTED THOROUGHLY.
3. WHERE BMPs HAVE FAILED, REPAIR OR REPLACEMENT SHOULD BE INITIATED UPON DISCOVERY OF THE FAILURE.
4. ROCK SHALL BE REAPPLIED OR REGRASSED AS NECESSARY TO THE STABILIZED ENTRANCE/EXIT TO MAINTAIN A CONSISTENT DEPTH.
5. SEDIMENT TRACKS ONTO PAVED ROADS IS TO BE REMOVED THROUGHOUT THE DAY AND AT THE END OF THE DAY BY SHOVELING OR SHEEPING. SEDIMENT MAY NOT BE WASHED DOWN STORM SEWER DRAINAGE.
NOTE: MANY JURISDICTIONS HAVE BMP DETAILS THAT VARY FROM USFCO STANDARD DETAILS. CONSULT WITH LOCAL JURISDICTIONS AS TO WHICH DETAIL SHOULD BE USED WHEN DIFFERENCES ARE NOTED.
(DETAILS ADAPTED FROM USFCO, COLORADO, NOT AVAILABLE IN AUTODO)

(DETAILS ADAPTED FROM USFCO, COLORADO, NOT AVAILABLE IN AUTODO)

VTC-6 Urban Drainage and Flood Control District
Urban Storm Drainage Criteria Manual Volume 3 November 2010

SM-4 Vehicle Tracking Control (VTC)

VEHICLE TRACKING CONTROL

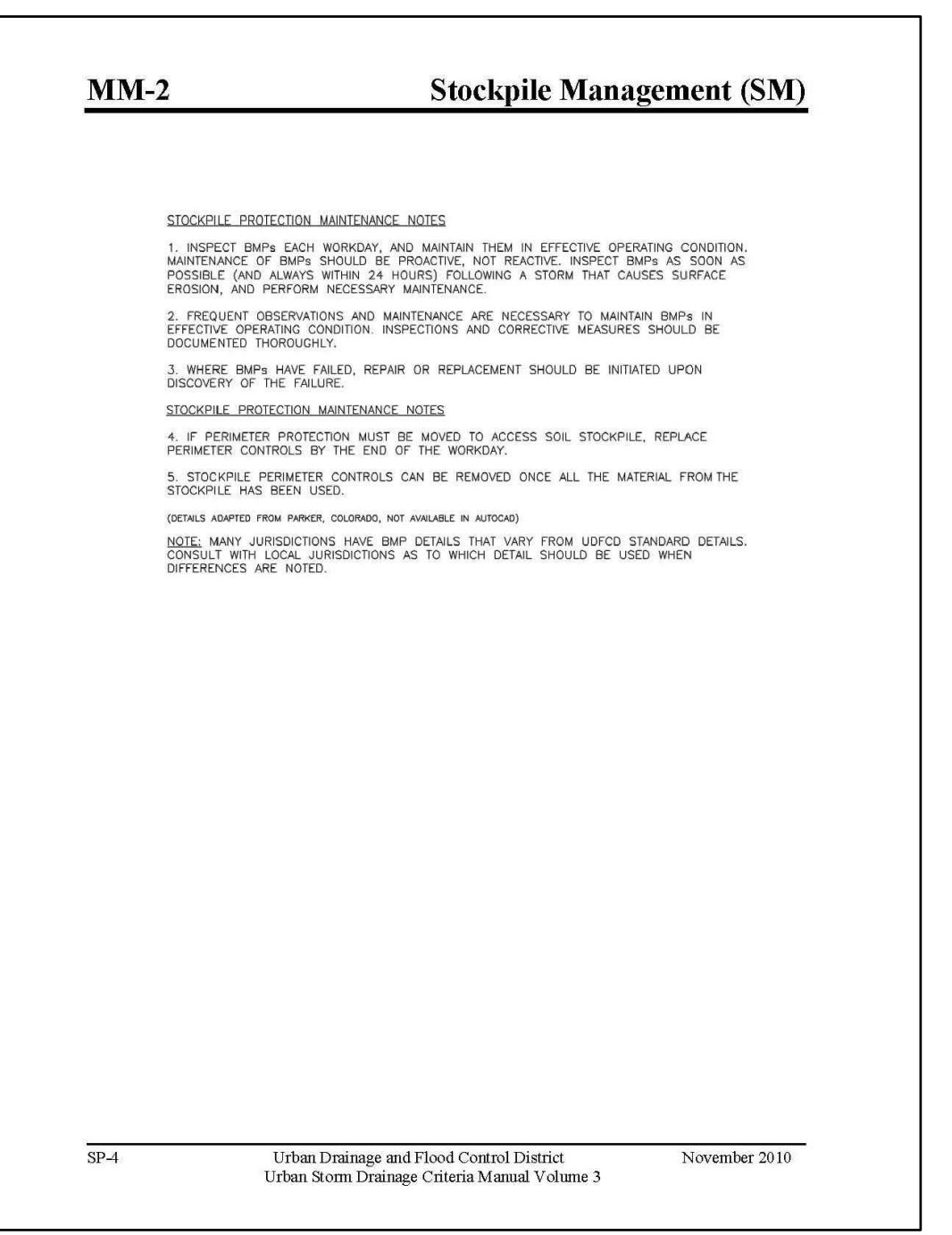
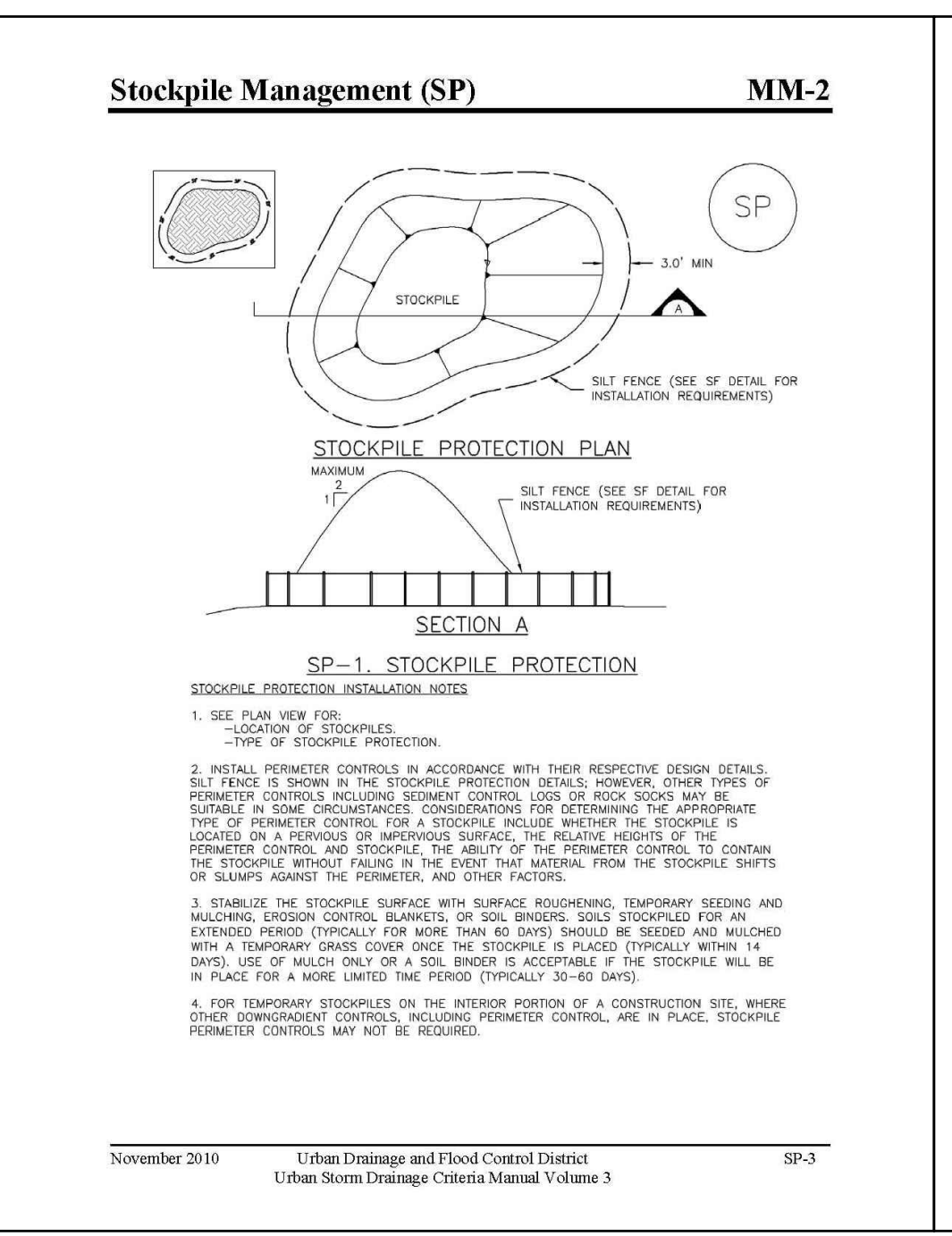
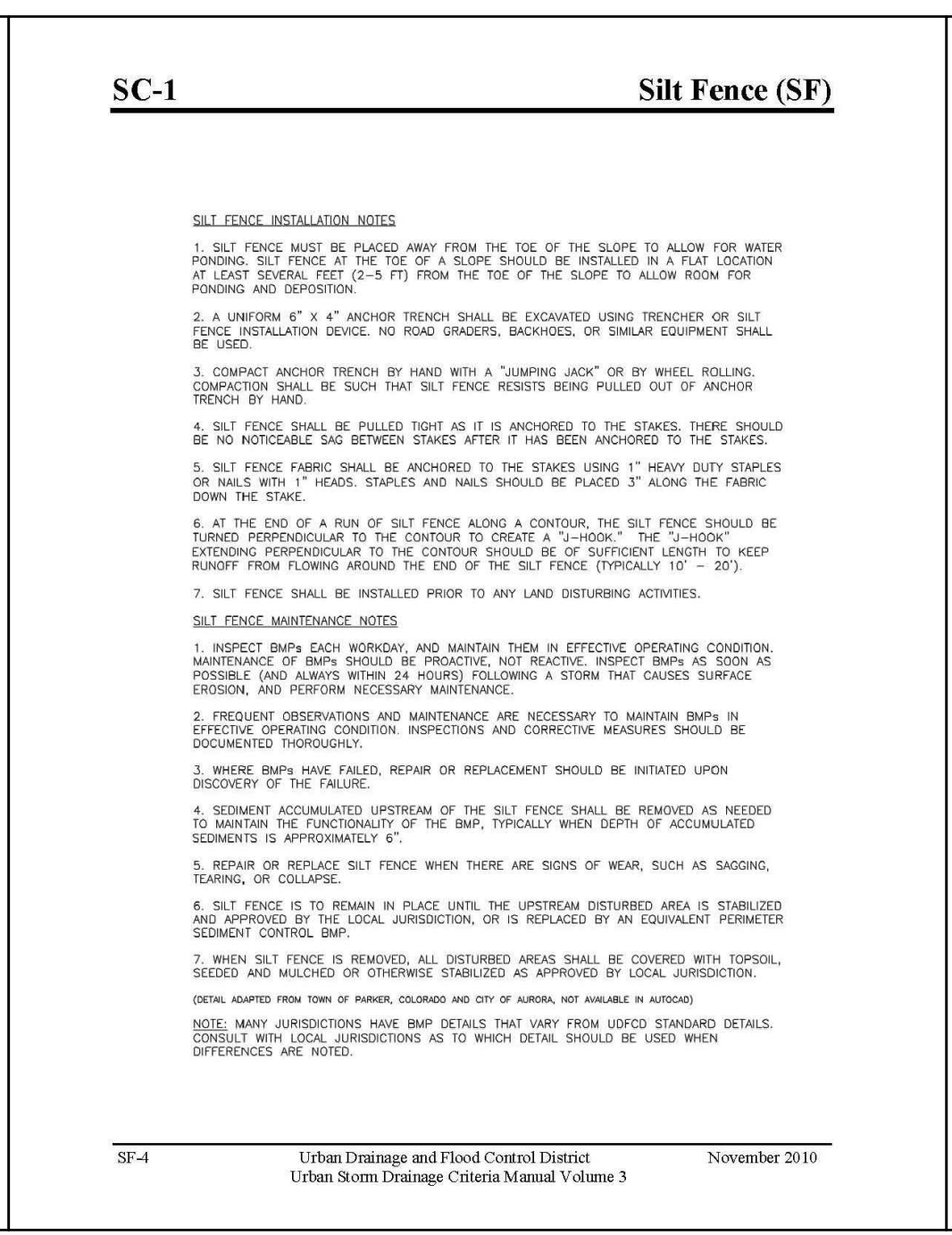
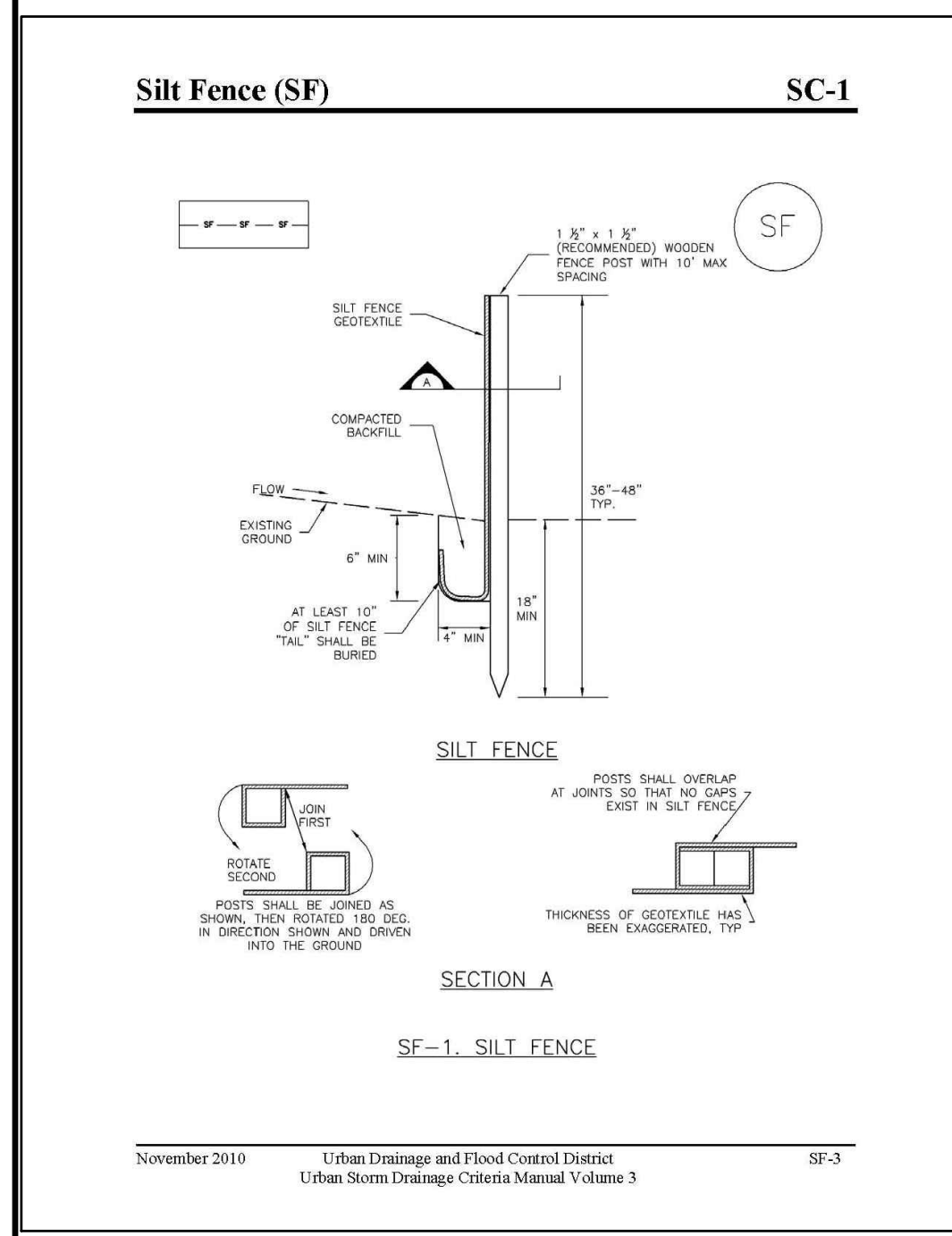
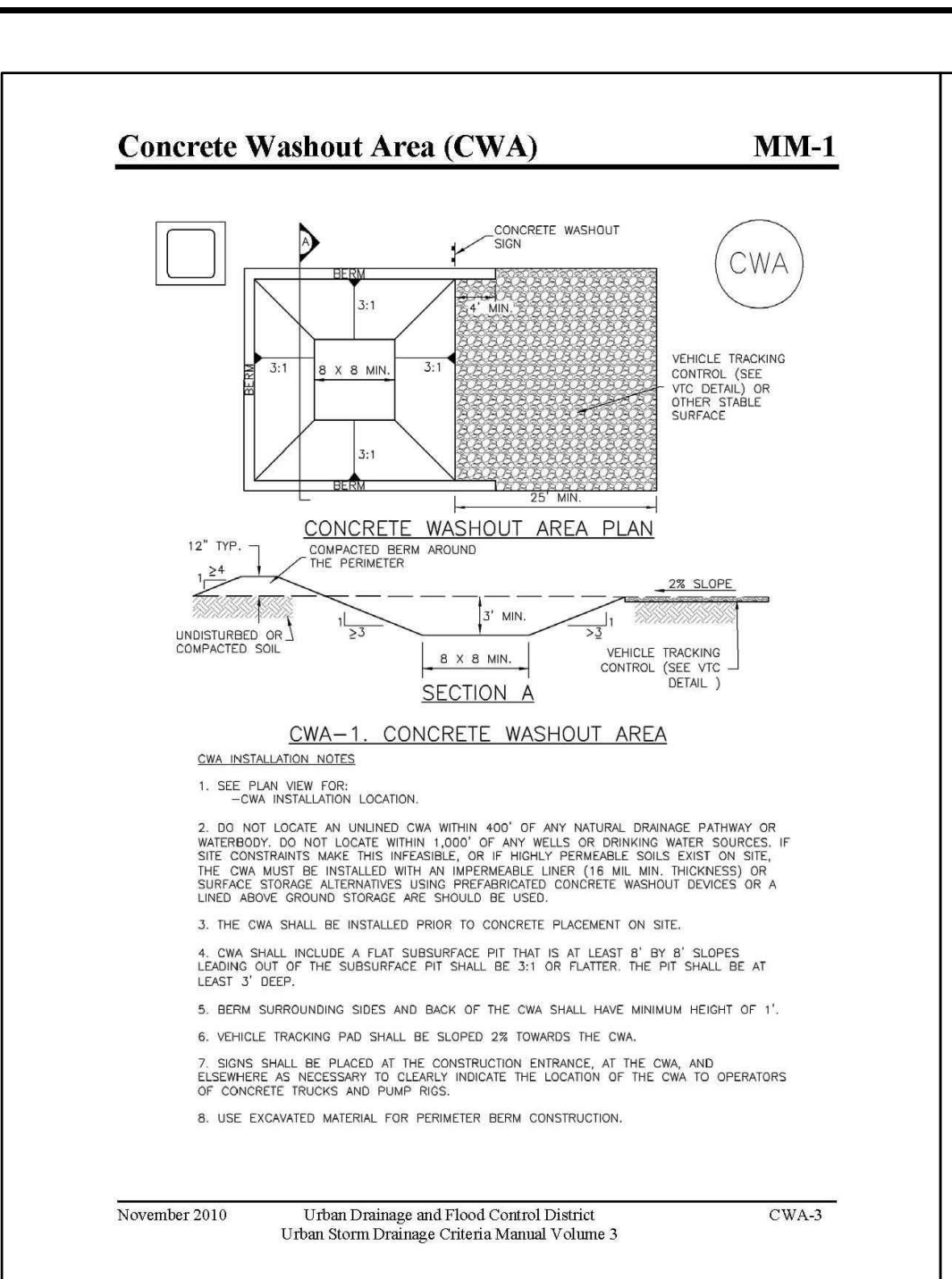
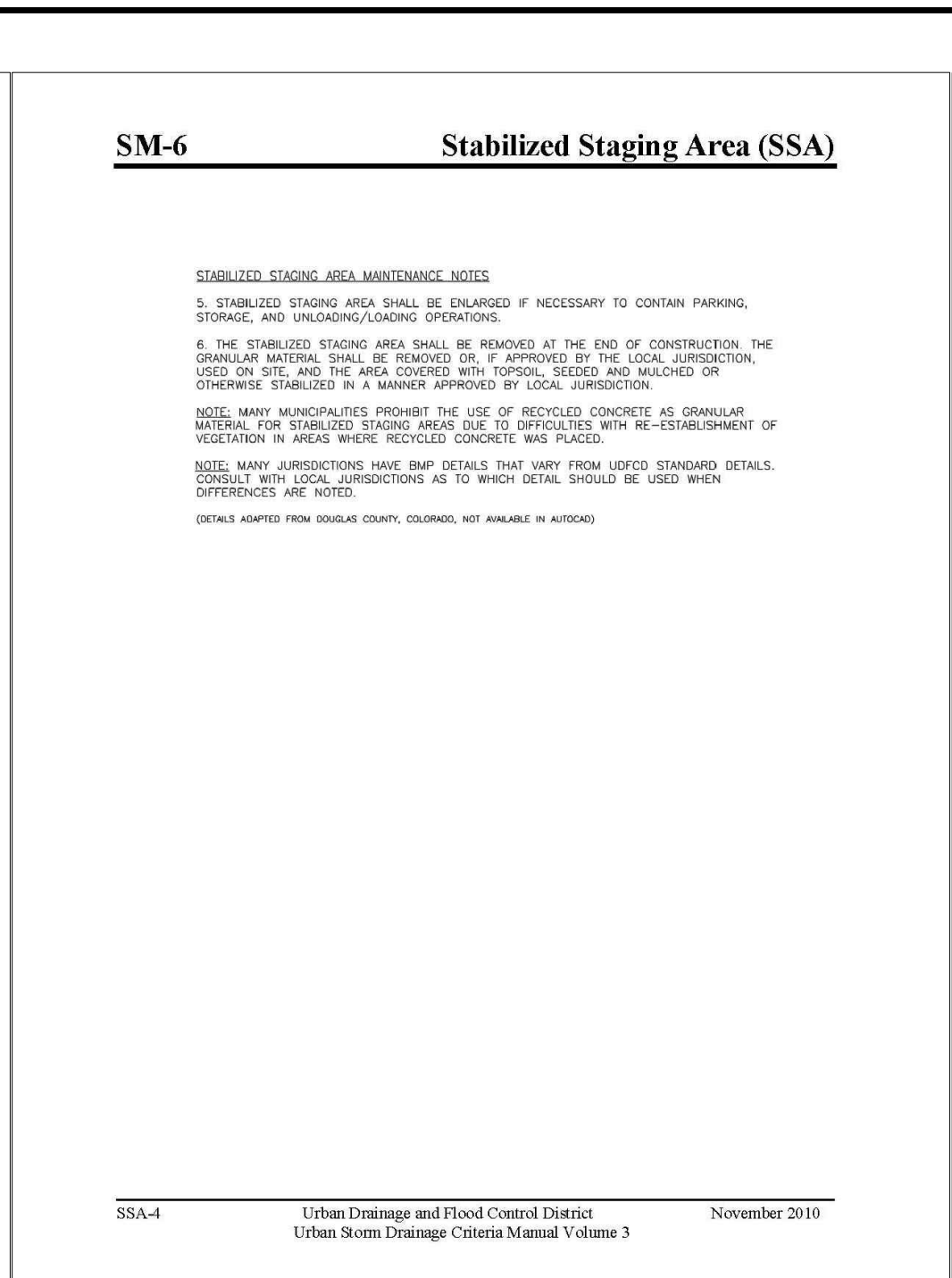
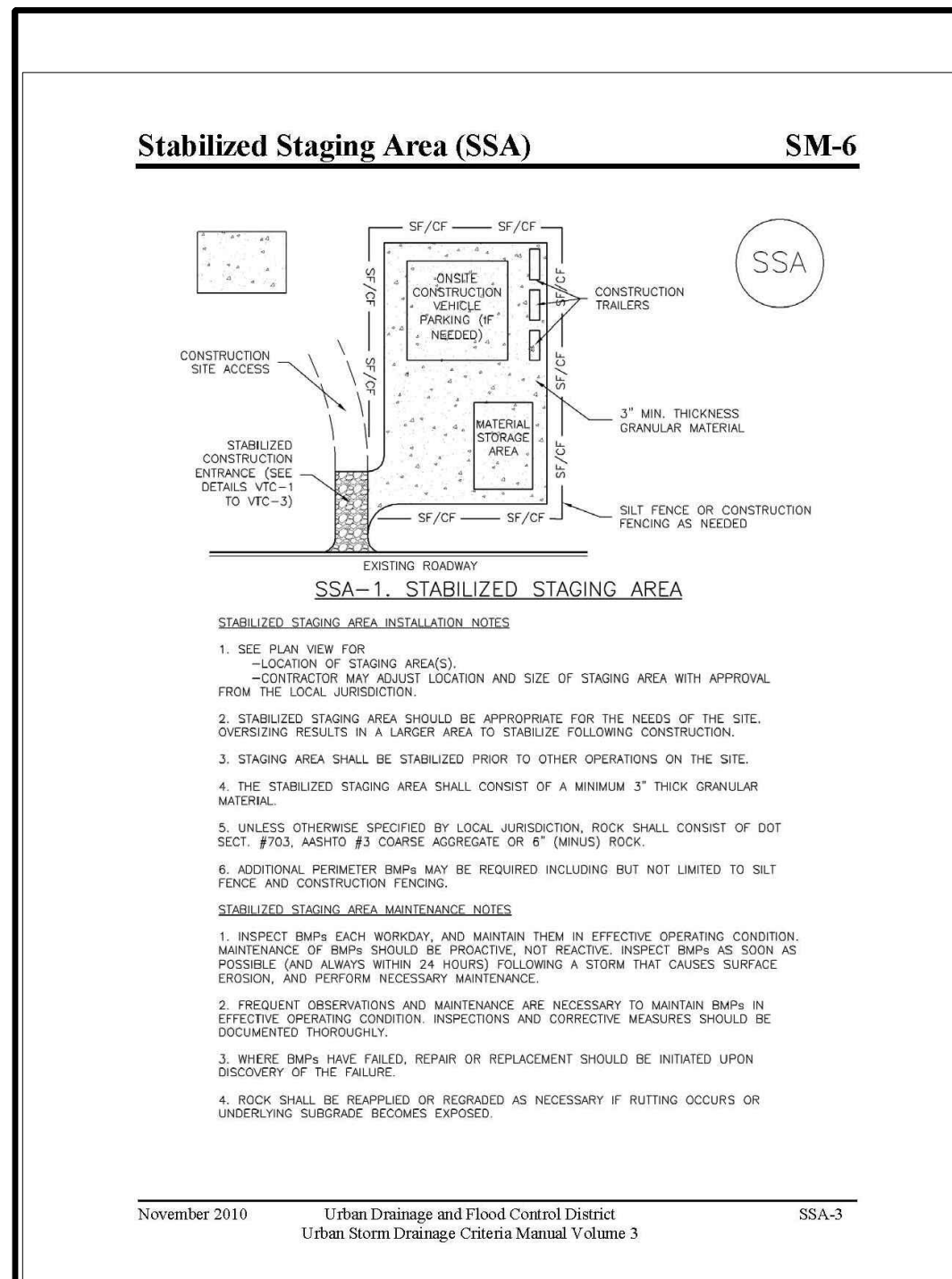


VTC-1 AGGREGATE VEHICLE TRACKING CONTROL

VTC-3 Urban Drainage and Flood Control District
Urban Storm Drainage Criteria Manual Volume 3 November 2010



Know what's below.
Call before you dig.
CALL 3-BUSINESS DAYS IN ADVANCE BEFORE YOU DIG, GRADE, OR EXCAVATE FOR THE MARKING OF UNDERGROUND MEMBER UTILITIES.



TEMPORARY SEEDING NOTES

- SOIL IS TO BE CONDITIONED FOR PLANT GROWTH BY APPLYING TOPSOIL, FERTILIZER OR LIME.
- SOIL IS TO BE TILLED IMMEDIATELY PRIOR TO APPLYING SEEDS. COMPACT SOILS ESPECIALLY NEED TO BE LOOSENED.
- SEEDBED DEPTH IS TO BE 4 INCHES FOR SLOPES FLATTER THAN 2:1 AND 1 INCH FOR SLOPES STEEPER THAN 2:1.
- ANNUAL GRASSES LISTED IN THE TABLE BELOW ARE TO BE USED FOR TEMPORARY SEEDING. SEED MIXES ARE NOT TO CONTAIN ANY NOXIOUS WEED SEEDS INCLUDING RUSSIAN OR CANADIAN THISTLE, KNAPEWEED, PURPLE LOOSESTRIPE, EUROPEAN BINDWEED, JOHNSON GRASS, AND LEAFY SPURGE.
- THE TABLE BELOW ALSO PROVIDES REQUIREMENTS FOR SEEDING RATES, SEEDING DATES, AND PLANTING DEPTHS FOR THE APPROVED TYPES OF ANNUAL GRASSES.
- SEEDING IS TO BE APPLIED USING MECHANICAL TYPE DRILLS EXCEPT WHERE SLOPES ARE STEEP OR ACCESS IS LIMITED THEN HYDRAULIC SEEDING MAY BE USED.
- ALL SEEDED AREAS ARE TO BE MULCHED.
- IF HYDRAULIC SEEDING IS USED THEN HYDRAULIC MULCHING SHALL BE DONE SEPARATELY TO AVOID SEEDS BECOMING ENCAPSULATED IN THE MULCH.

MULCHING NOTES

INSTALLATION REQUIREMENTS

- MATERIAL USED FOR MULCH CAN BE CERTIFIED CLEAN, WEED-AND SEED-FREE LONG STEMMED FIELD OR MARSH HAY, OR STRAW OF OATS, BARLEY, WHEAT, RYE, OR TRITICALE CERTIFIED BY THE COLORADO DEPARTMENT OF AGRICULTURE WEED FREE FORAGE CERTIFICATION PROGRAM.
- HYDRAULIC MULCHING MATERIAL SHALL CONSIST OF VIRGIN WOOD FIBER MANUFACTURED FROM CLEAN WHOLE WOOD CHIPS. WOOD CHIPS CANNOT CONTAIN ANY GROWTH OR GERMINATION INHIBITORS OR BE PRODUCED FROM RECYCLED MATERIAL.
- MULCH IS TO BE APPLIED EVENLY AT A RATE OF 2 TONS PER ACRE.
- MULCH IS TO BE ANCHORED EITHER BY CRIMPING (TUCKING MULCH FIBERS 4 INCHES INTO THE SOIL), USING NETTING (USED ON SMALL AREAS WITH STEEP SLOPES) OR WITH A TACKIFIER.
- HYDRAULIC MULCHING AND TACKIFIERS ARE NOT TO BE USED IN THE PRESENCE OF FREE SURFACE WATER.

MAINTENANCE REQUIREMENTS

- REGULAR INSPECTIONS ARE TO BE MADE OF ALL MULCHED AREAS.
- MULCH IS TO BE REPLACED IMMEDIATELY IN THOSE AREAS IT HAS BEEN REMOVED, AND IF NECESSARY THE AREA SHOULD BE RESEDED.

SEEDING PLAN

NATIVE SEEDING MIX

SOIL PREPARATION, FERTILIZER, SEEDING, MULCHING AND MULCH TACKIFIER WILL BE REQUIRED FOR DISTURBED AREAS EXCLUDING THE RIGHT-OF-WAYS.

THE FOLLOWING TYPES AND RATES SHALL BE USED:

COMMON NAME	SCIENTIFIC NAME	LBS PLS/ACRE
SAND BLUESTEM V. ELIDA	ANDROPOGON HALLII	2.0
WESTERN WHEATGRASS V. ARRIBA	PASCOPYRUM SMITHII	7.0
SIDEOATS GRAMA V. VAUGHN	BOUPELOUA CURTIPENDULA	4.0
GALLETTA V. VIVA (CARYOPSIS)	HILARIA JAMESII	1.0
LITTLE BLUESTEM V. PASTURA	SCHIZACHYRIUM SCOPARIUM	3.0
PRARIE SANDREED V. GASHEN	CALAMOVILFA LONGIFOLIA	2.0
SWITCHGRASS V. NEBR 28	PANICUM VIRGATUM	1.0
BLANKETFLOWER	GALLIARDIA ARISTATA	1.0
PRARIE CONEFLOWER	RATIBIDA COLUMNIFERA	0.5
BLUE FLAX	LINUM LEWISII	1.0
OATS	AVENA SATIVA	3.0
WINTER WHEAT	TRITICUM AESTIVUM	3.0
TOTAL/POUNDS/ACRE		28.5

FERTILIZER	RATE PER ACRE
NITROGEN	27
PHOSPHORUS (P205)	69

SEEDING APPLICATION: DRILL SEED 0.25"-0.5" INTO TOPSOIL. AREA NOT ACCESSIBLE TO A DRILL SEEDER AND SLOPES STEEPER THAN 2:1 SHALL BE HAND BROADCAST AND DOUBLE THE ABOVE SEED RATE AND RAKED AT 1/4 TO 1/2 INTO THE TOPSOIL.

MULCHING APPLICATION: 1 1/2 TONS CERTIFIED WEED FREE NATIVE HAY PER ACRE MECHANICALLY CRIMED IN TOPSOIL IN COMBINATION WITH AN ORGANIC MULCH TACKIFIER.

PREPARED BY:

DREXEL, BARRELL & CO.
 Engineers • Surveyors
 3 SOUTH 7TH STREET
 COLORADO SPRGS, COLORADO 80905
 CONTACT: TIM D. MCCONNELL, P.E.
 (719)260-0887
 BOULDER • COLORADO SPRINGS • GREELEY

CLIENT:

FALCON FIELD, LLC.

3230 ELECTRA DR N.
 COLORADO SPRINGS, CO 80906
 (719) 475-7474
 CONTACT: FJ ANDERSON

CONSTRUCTION DOCUMENTS FOR:

**THE COMMONS AT
 FALCON FIELD**

12445 RIO LANE, AND VACANT LAND
 PEYTON, EL PASO COUNTY, COLORADO

ISSUE	DATE
INITIAL ISSUE	3/16/23
DESIGNED BY:	TDM
DRAWN BY:	KGV
CHECKED BY:	TDM
FILE NAME:	21604-00ECDT1-2

PREPARED UNDER MY DIRECT SUPERVISION FOR AND ON BEHALF OF
DREXEL, BARRELL & CO.

DRAWING SCALE:
HORIZONTAL: N/A
VERTICAL: N/A

EROSION CONTROL DETAILS

PROJECT NO. 21604-00CSCV
 DRAWING NO.

DT-2

SHEET: 8 OF 8

