

EARLY GRADING AND EROSION CONTROL PLANS

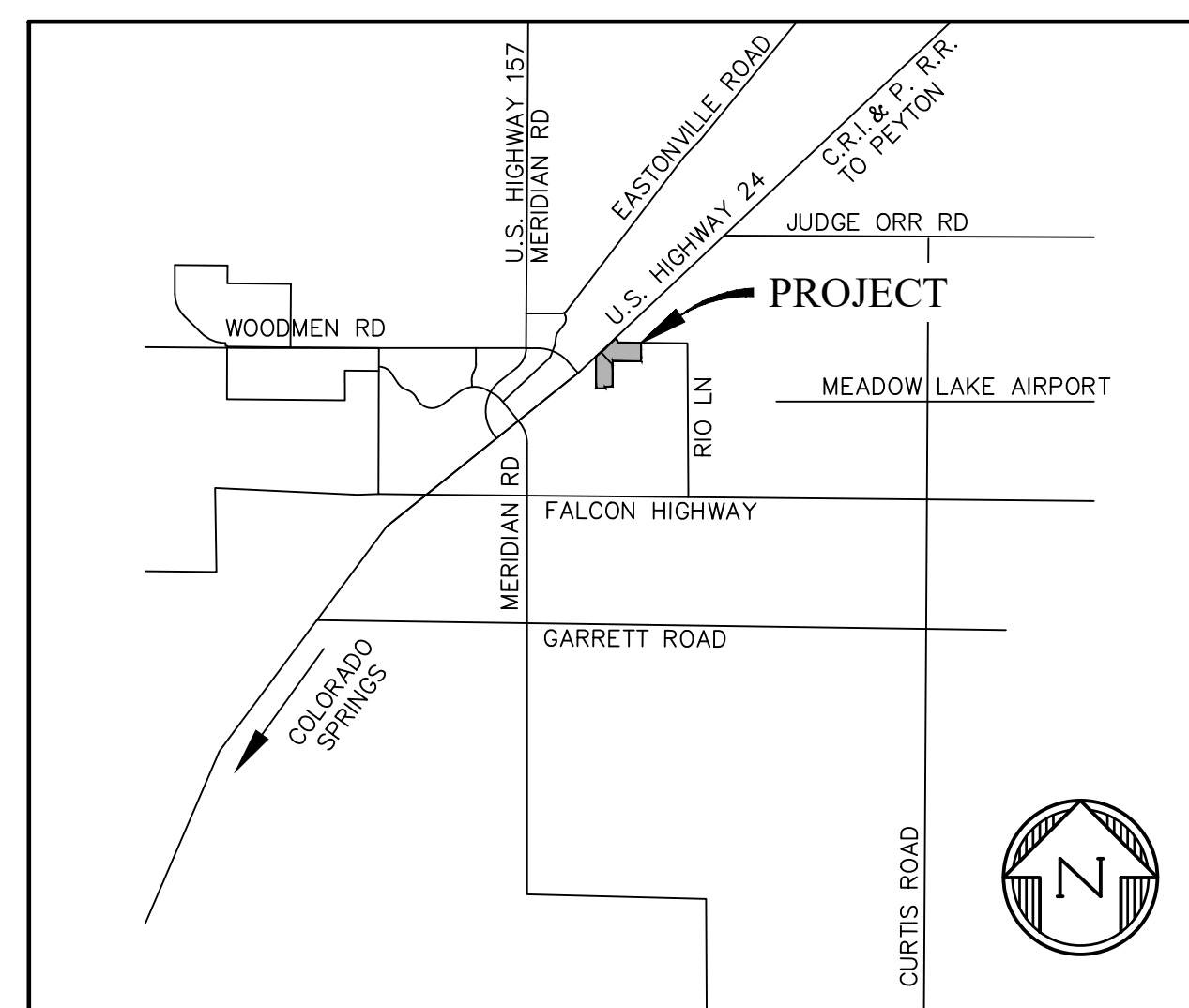
THE COMMONS AT FALCON FIELD

SECTION 7, TOWNSHIP 13 SOUTH, RANGE 64 WEST OF THE 6TH P.M.

PEYTON, EL PASO COUNTY, COLORADO

STANDARD NOTES FOR EL PASO COUNTY GRADING AND EROSION CONTROL PLANS

1. STORMWATER DISCHARGES FROM CONSTRUCTION SITES SHALL NOT CAUSE OR THREATEN TO CAUSE POLLUTION, CONTAMINATION, OR DEGRADATION OF STATE WATERS. ALL WORK AND EARTH DISTURBANCE SHALL BE DONE IN A MANNER THAT MINIMIZES POLLUTION OF ANY ON-SITE OR OFF SITE WATERS, INCLUDING WETLANDS.
2. NOTWITHSTANDING ANYTHING DEPICTED IN THESE PLANS IN WORDS OR GRAPHIC REPRESENTATION, ALL DESIGN AND CONSTRUCTION RELATED TO ROADS, STORM DRAINAGE AND EROSION CONTROL SHALL CONFORM TO THE STANDARDS AND REQUIREMENTS OF THE MOST RECENT VERSION OF THE RELEVANT ADOPTED EL PASO COUNTY STANDARDS, INCLUDING THE LAND DEVELOPMENT CODE, THE ENGINEERING CRITERIA MANUAL, THE DRAINAGE CRITERIA MANUAL, AND THE DRAINAGE CRITERIA MANUAL VOLUME 2. ANY DEVIATIONS TO REGULATIONS AND STANDARDS MUST BE REQUESTED, AND APPROVED, IN WRITING.
3. A SEPARATE STORMWATER MANAGEMENT PLAN (SMWP) FOR THIS PROJECT SHALL BE COMPLETED AND AN EROSION AND STORMWATER QUALITY CONTROL PERMIT (ESQCP) ISSUED PRIOR TO COMMENCING CONSTRUCTION. MANAGEMENT OF THE SWMP DURING CONSTRUCTION THE SWMP IS THE RESPONSIBILITY OF THE DESIGNATED STORMWATER MANAGER OR CERTIFIED EROSION CONTROL INSPECTOR. THE SWMP SHALL BE LOCATED ON-SITE AT ALL TIMES DURING CONSTRUCTION AND SHALL BE KEPT UP TO DATE WITH WORK PROGRESS AND CHANGES IN THE FIELD.
4. ONCE THE ESQCP IS APPROVED AND A "NOTICE TO PROCEED" HAS BEEN ISSUED, THE CONTRACTOR MAY INSTALL THE INITIAL STAGE EROSION AND SEDIMENT CONTROL MEASURES AS INDICATED ON THE APPROVED GEC. A PRECONSTRUCTION MEETING BETWEEN THE CONTRACTOR, ENGINEER, AND EL PASO COUNTY WILL BE HELD PRIOR TO ANY CONSTRUCTION. IT IS THE RESPONSIBILITY OF THE APPLICANT TO COORDINATE THE MEETING TIME AND PLACE WITH COUNTY STAFF.
5. CONTROL MEASURES MUST BE INSTALLED PRIOR TO COMMENCEMENT OF ACTIVITIES THAT COULD CONTRIBUTE POLLUTANTS TO STORMWATER. CONTROL MEASURES FOR ALL SLOPES, CHANNELS, DITCHES, AND DISTURBED LAND AREAS SHALL BE INSTALLED IMMEDIATELY UPON COMPLETION OF THE DISTURBANCE.
6. ALL TEMPORARY SEDIMENT AND EROSION CONTROL MEASURES SHALL BE MAINTAINED AND REMAIN IN EFFECTIVE OPERATING CONDITION UNTIL PERMANENT SOIL EROSION CONTROL MEASURES ARE IMPLEMENTED AND FINAL STABILIZATION IS ESTABLISHED. ALL PERSONS ENGAGED IN LAND DISTURBANCE ACTIVITIES SHALL ASSESS THE ADEQUACY OF CONTROL MEASURES AT THE SITE AND IDENTIFY IF CHANGES TO THOSE CONTROL MEASURES ARE NEEDED TO ENSURE THE CONTINUED EFFECTIVE PERFORMANCE OF THE CONTROL MEASURES. ALL CHANGES TO TEMPORARY SEDIMENT AND EROSION CONTROL MEASURES MUST BE INCORPORATED INTO THE STORMWATER MANAGEMENT PLAN.
7. TEMPORARY STABILIZATION SHALL BE IMPLEMENTED ON DISTURBED AREAS AND STOCKPILES WHERE GROUND DISTURBING CONSTRUCTION ACTIVITY HAS PERMANENTLY CEASED OR TEMPORARILY CEASED FOR LONGER THAN 14 DAYS.
8. FINAL STABILIZATION MUST BE IMPLEMENTED AT ALL APPLICABLE CONSTRUCTION SITES. FINAL STABILIZATION IS ACHIEVED WHEN ALL GROUND DISTURBING ACTIVITIES ARE COMPLETE AND ALL DISTURBED AREAS EITHER HAVE A UNIFORM VEGETATIVE COVER WITH INDIVIDUAL PLANT DENSITY OF 70 PERCENT OF PRE-DISTURBANCE LEVELS ESTABLISHED OR EQUIVALENT PERMANENT ALTERNATIVE STABILIZATION METHOD IS IMPLEMENTED. ALL TEMPORARY SEDIMENT AND EROSION CONTROL MEASURES SHALL BE REMOVED UPON FINAL STABILIZATION AND BEFORE PERMIT CLOSURE.
9. ALL PERMANENT STORMWATER MANAGEMENT FACILITIES SHALL BE INSTALLED AS DESIGNED IN THE APPROVED PLANS. ANY PROPOSED CHANGES THAT EFFECT THE DESIGN OR FUNCTION OF PERMANENT STORMWATER MANAGEMENT STRUCTURES MUST BE APPROVED BY THE ECM ADMINISTRATOR PRIOR TO IMPLEMENTATION.
10. EARTH DISTURBANCES SHALL BE CONDUCTED IN SUCH A MANNER SO AS TO EFFECTIVELY MINIMIZE ACCELERATED SOIL EROSION AND RESULTING SEDIMENTATION. ALL DISTURBANCES SHALL BE DESIGNED, CONSTRUCTED, AND COMPLETED SO THAT THE EXPOSED AREA OF ANY DISTURBED LAND SHALL BE LIMITED TO THE SHORTEST PRACTICAL PERIOD OF TIME. PRE-EXISTING VEGETATION SHALL BE PROTECTED AND MAINTAINED WITHIN 50 HORIZONTAL FEET OF A WATERS OF THE STATE UNLESS SHOWN TO BE INFEASIBLE AND SPECIFICALLY REQUESTED AND APPROVED.
11. COMPACTION OF SOIL MUST BE PREVENTED IN AREAS DESIGNATED FOR INFILTRATION CONTROL MEASURES OR WHERE FINAL STABILIZATION WILL BE ACHIEVED BY VEGETATIVE COVER. AREAS DESIGNATED FOR INFILTRATION CONTROL MEASURES SHALL ALSO BE PROTECTED FROM SEDIMENTATION DURING CONSTRUCTION UNTIL FINAL STABILIZATION IS ACHIEVED. IF COMPACTION PREVENTION IS NOT FEASIBLE DUE TO SITE CONSTRAINTS, ALL AREAS DESIGNATED FOR INFILTRATION AND VEGETATION CONTROL MEASURES MUST BE LOOSENEED PRIOR TO INSTALLATION OF THE CONTROL MEASURE(S).
12. ANY TEMPORARY OR PERMANENT FACILITY DESIGNED AND CONSTRUCTED FOR THE CONVEYANCE OF STORMWATER AROUND, THROUGH, OR FROM THE EARTH DISTURBANCE AREA SHALL BE A STABILIZED CONVEYANCE DESIGNED TO MINIMIZE EROSION AND THE DISCHARGE OF SEDIMENT OFF-SITE.
13. CONCRETE WASH WATER SHALL BE CONTAINED AND DISPOSED OF IN ACCORDANCE WITH THE SWMP. NO WASH WATER SHALL BE DISCHARGED TO OR ALLOWED TO ENTER STATE WATERS, INCLUDING ANY SURFACE OR SUBSURFACE STORM DRAINAGE SYSTEM OR FACILITIES. CONCRETE WASHOUTS SHALL NOT BE LOCATED IN AN AREA WHERE SHALLOW GROUNDWATER MAY BE PRESENT, OR WITHIN 50 FEET OF A SURFACE WATER BODY, CREEK OR STREAM.
14. DURING DEWATERING OPERATIONS, UNCONTAMINATED GROUNDWATER MAY BE DISCHARGED ON-SITE, BUT SHALL NOT LEAVE THE SITE IN THE FORM OF SURFACE RUNOFF UNLESS AN APPROVED STATE DEWATERING PERMIT IS IN PLACE.
15. EROSION CONTROL BLANKETING OR OTHER PROTECTIVE COVERING SHALL BE USED ON SLOPES STEEPER THAN 3:1.
16. CONTRACTOR SHALL BE RESPONSIBLE FOR THE REMOVAL OF ALL WASTES FROM THE CONSTRUCTION SITE FOR DISPOSAL IN ACCORDANCE WITH LOCAL AND STATE REGULATORY REQUIREMENTS. NO CONSTRUCTION DEBRIS, TREE SLASH, BUILDING MATERIAL WASTES OR UNUSED BUILDING MATERIALS SHALL BE BURIED, DUMPED, OR DISCHARGED AT THE SITE.
17. WASTE MATERIALS SHALL NOT BE TEMPORARILY PLACED OR STORED IN THE STREET, ALLEY, OR OTHER PUBLIC WAY, UNLESS IN ACCORDANCE WITH AN APPROVED TRAFFIC CONTROL PLAN. CONTROL MEASURES MAY BE REQUIRED BY EL PASO COUNTY ENGINEERING IF DEEMED NECESSARY, BASED ON SPECIFIC CONDITIONS AND CIRCUMSTANCES.



VICINITY MAP
NTS

STANDARD NOTES FOR EL PASO COUNTY GRADING AND EROSION CONTROL PLANS

18. TRACKING OF SOILS AND CONSTRUCTION DEBRIS OFF-SITE SHALL BE MINIMIZED. MATERIALS TRACKED OFF-SITE SHALL BE CLEANED UP AND PROPERLY DISPOSED OF IMMEDIATELY.
19. THE OWNER/DEVELOPER SHALL BE RESPONSIBLE FOR THE REMOVAL OF ALL CONSTRUCTION DEBRIS, DIRT, TRASH, ROCK, SEDIMENT, SOIL, AND SAND THAT MAY ACCUMULATE IN ROADS, STORM DRAINS AND OTHER DRAINAGE CONVEYANCE SYSTEMS AND STORMWATER APPURTENANCES AS A RESULT OF SITE DEVELOPMENT.
20. THE QUANTITY OF MATERIALS STORED ON THE PROJECT SITE SHALL BE LIMITED, AS MUCH AS PRACTICAL, TO THAT QUANTITY REQUIRED TO PERFORM THE WORK IN AN ORDERLY SEQUENCE. ALL MATERIALS STORED ON-SITE SHALL BE STORED IN A NEAT, ORDERLY MANNER, IN THEIR ORIGINAL CONTAINERS, WITH ORIGINAL MANUFACTURER'S LABELS.
21. NO CHEMICAL(S) HAVING THE POTENTIAL TO BE RELEASED IN STORMWATER ARE TO BE STORED OR USED ON-SITE UNLESS PERMISSION FOR THE USE OF SUCH CHEMICAL(S) IS GRANTED IN WRITING BY THE ECM ADMINISTRATOR. IN GRANTING APPROVAL FOR THE USE OF SUCH CHEMICAL(S), SPECIAL CONDITIONS AND MONITORING MAY BE REQUIRED.
22. BULK STORAGE OF ALLOWED PETROLEUM PRODUCTS OR OTHER ALLOWED LIQUID CHEMICALS IN EXCESS OF 55 GALLONS SHALL REQUIRE ADEQUATE SECONDARY CONTAINMENT PROTECTION TO CONTAIN ALL SPILLS ON-SITE AND TO PREVENT ANY SPILLED MATERIALS FROM ENTERING STATE WATERS, ANY SURFACE OR SUBSURFACE STORM DRAINAGE SYSTEM OR OTHER FACILITIES.
23. NO PERSON SHALL CAUSE THE IMPEDIMENT OF STORMWATER FLOW IN THE CURB AND GUTTER OR DITCH EXCEPT WITH APPROVED SEDIMENT CONTROL MEASURES.
24. OWNER/DEVELOPER AND THEIR AGENTS SHALL COMPLY WITH THE "COLORADO WATER QUALITY CONTROL ACT" (TITLE 25, ARTICLE 8, CRS), AND THE "CLEAN WATER ACT" (33 USC 1344), IN ADDITION TO THE REQUIREMENTS OF THE LAND DEVELOPMENT CODE, DCM VOLUME II AND THE ECM APPENDIX I. ALL APPROPRIATE PERMITS MUST BE OBTAINED BY THE CONTRACTOR PRIOR TO CONSTRUCTION (1041, NPDES, FLOODPLAIN, 404, FUGITIVE DUST, ETC.). IN THE EVENT OF CONFLICTS BETWEEN THESE REQUIREMENTS AND OTHER LAWS, RULES, OR REGULATIONS OF OTHER FEDERAL, STATE, LOCAL, OR COUNTY AGENCIES, THE MOST RESTRICTIVE LAWS, RULES, OR REGULATIONS SHALL APPLY.
25. ALL CONSTRUCTION TRAFFIC MUST ENTER/EXIT THE SITE ONLY AT APPROVED CONSTRUCTION ACCESS POINTS.
26. PRIOR TO CONSTRUCTION THE PERMITTEE SHALL VERIFY THE LOCATION OF EXISTING UTILITIES.
27. A WATER SOURCE SHALL BE AVAILABLE ON-SITE DURING EARTHWORK OPERATIONS AND SHALL BE UTILIZED AS REQUIRED TO MINIMIZE DUST FROM EARTHWORK EQUIPMENT AND WIND.
28. THE SOILS REPORT FOR THIS SITE HAS BEEN PREPARED BY ENTECH ENGINEERING, INCORPORATED, JANUARY 20, 2021 AND SHALL BE CONSIDERED A PART OF THESE PLANS.
29. AT LEAST TEN DAYS PRIOR TO THE ANTICIPATED START OF CONSTRUCTION, FOR PROJECTS THAT WILL DISTURB 1 ACRE OR MORE, THE OWNER OR OPERATOR OF CONSTRUCTION ACTIVITY SHALL SUBMIT A PERMIT APPLICATION FOR STORMWATER DISCHARGE TO THE COLORADO DEPARTMENT OF PUBLIC HEALTH AND ENVIRONMENT, WATER QUALITY DIVISION. THE APPLICATION CONTAINS CERTIFICATION OF COMPLETION OF A STORMWATER MANAGEMENT PLAN (SWMP), OF WHICH THIS GRADING AND EROSION CONTROL PLAN MAY BE A PART. FOR INFORMATION OR APPLICATION MATERIALS CONTACT:

COLORADO DEPARTMENT OF PUBLIC HEALTH AND ENVIRONMENT
WATER QUALITY CONTROL DIVISION
WQCD - PERMITS
4300 CHERRY CREEK DRIVE SOUTH
DENVER, CO 80246-1530
ATTN: PERMITS UNIT

SHEET INDEX

- CVR - GRADING AND EROSION CONTROL COVER SHEET
- EC1-4 - INITIAL EROSION CONTROL PLAN
- DT1-2 - EROSION CONTROL DETAILS

BENCHMARK:

TO BE DETERMINED.

ENGINEER'S STATEMENT

THIS EROSION CONTROL/GRADING PLAN WAS PREPARED UNDER MY DIRECTION AND SUPERVISION AND IS CORRECT TO THE BEST OF MY KNOWLEDGE AND BELIEF. SAID PLAN HAS BEEN PREPARED ACCORDING TO THE CRITERIA ESTABLISHED BY THE COUNTY FOR GRADING AND EROSION CONTROL PLANS. I ACCEPT RESPONSIBILITY FOR ANY LIABILITY CAUSED BY NEGLIGENT ACTS, ERRORS OR OMISSIONS ON MY PART IN PREPARING THIS REPORT.

TIM D. McCONNELL, P.E.

DATE

OWNER'S STATEMENT

I, THE OWNER/DEVELOPER HAVE READ AND WILL COMPLY WITH THE REQUIREMENTS OF THE GRADING AND EROSION CONTROL PLAN.

OWNER/DEVELOPER

DATE

EL PASO COUNTY

COUNTY PLAN REVIEW IS PROVIDED ONLY FOR GENERAL CONFORMANCE WITH COUNTY DESIGN CRITERIA. THE COUNTY IS NOT RESPONSIBLE FOR THE ACCURACY AND ADEQUACY OF THE DESIGN DIMENSIONS, AND/OR ELEVATIONS WHICH SHALL BE CONFIRMED AT THE JOB SITE. THE COUNTY THROUGH THE APPROVAL OF THIS DOCUMENTS ASSUMES NO RESPONSIBILITY FOR COMPLETENESS AND/OR ACCURACY OF THIS DOCUMENT.

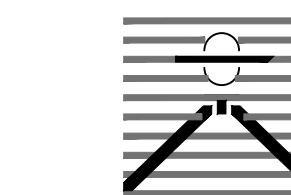
FILED IN ACCORDANCE WITH THE REQUIREMENTS OF THE EL PASO COUNTY LAND DEVELOPMENT CODE, DRAINAGE CRITERIA, AND ENGINEERING CRITERIA MANUAL AS AMENDED.

IN ACCORDANCE WITH ECM SECTION 1.12, THESE CONSTRUCTION DOCUMENTS WILL BE VALID FOR CONSTRUCTION FOR A PERIOD OF 2 YEARS FROM THE DATE SIGNED BY THE EL PASO COUNTY ENGINEER. IF CONSTRUCTION HAS NOT STARTED WITHIN THOSE 2 YEARS, THE PLANS WILL NEED TO BE RESUBMITTED FOR APPROVAL, INCLUDING PAYMENT OF REVIEW FEES AT THE PLANNING AND COMMUNITY DEVELOPMENT DIRECTOR'S DISCRETION.

JOSHUA PALMER, COUNTY ENGINEER

DATE

PREPARED BY:



DREXEL, BARRELL & CO.
Engineers • Surveyors
101 SAWATCH ST. SUITE 100
COLORADO SPGS, COLORADO 80903
CONTACT: TIM D. McCONNELL, P.E.
(719) 475-7474
COLORADO SPRINGS • LAFAYETTE

CLIENT:

FALCON FIELD, LLC.

3230 ELECTRA DR N.
COLORADO SPRINGS, CO 80906
(719) 475-7474
CONTACT: PJ ANDERSON

EARLY G.E.C. PLANS FOR:
**THE COMMONS AT
FALCON FIELD**
12445 RIO LANE, AND VACANT LAND
PEYTON, EL PASO COUNTY, COLORADO

ISSUE	DATE
INITIAL ISSUE	2/12/24

DESIGNED BY:	TDM
DRAWN BY:	CGH
CHECKED BY:	TDM
FILE NAME:	21604-00EGCV

PREPARED UNDER MY DIRECT SUPERVISION FOR AND ON BEHALF OF
DREXEL, BARRELL & CO.

DRAWING SCALE:
HORIZONTAL: N/A
VERTICAL: N/A

GRADING AND
EROSION CONTROL
COVER SHEET

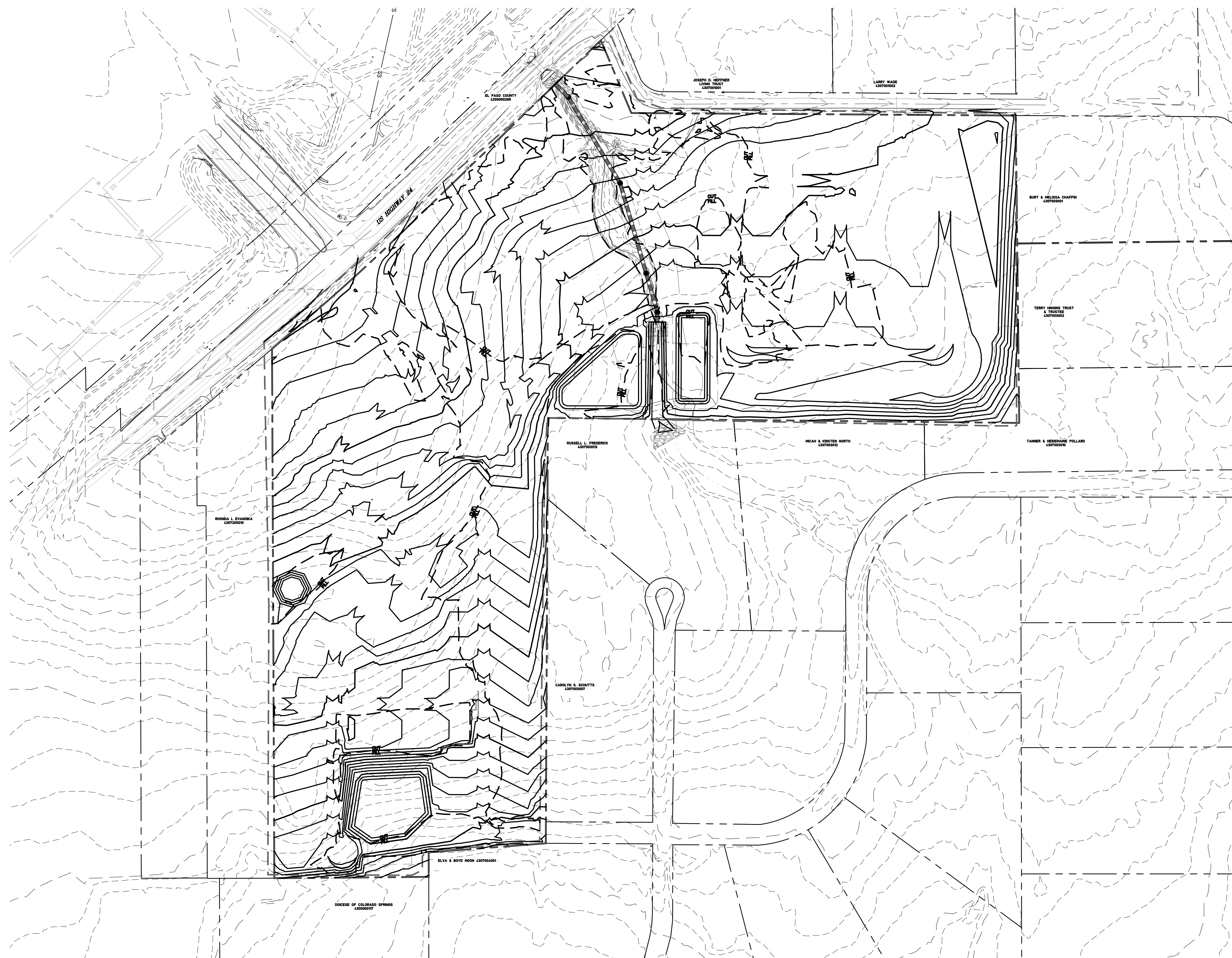
PROJECT NO. 21604-00CSCV
DRAWING NO.

CVR

SHEET: 1 OF 8



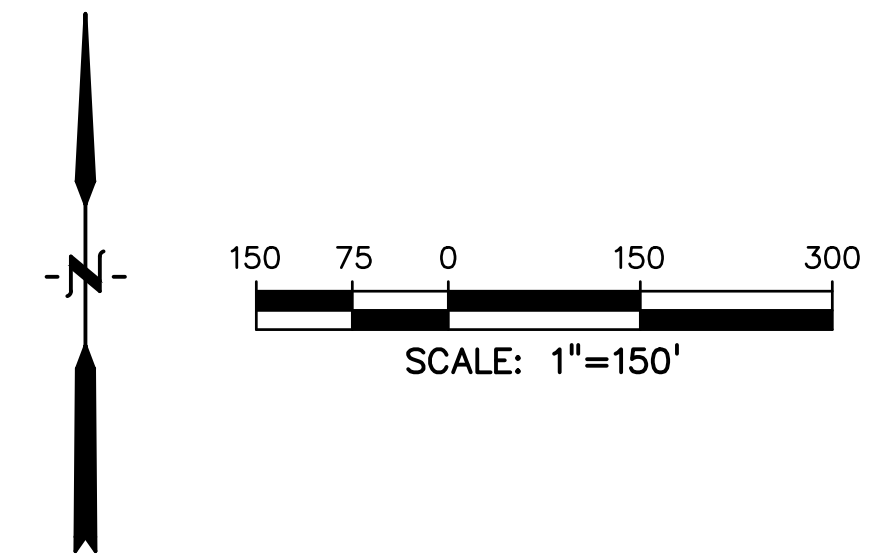
Know what's below.
Call before you dig.
CALL 3-BUSINESS DAYS IN ADVANCE
BEFORE YOU DIG, GRADE, OR
EXCAVATE FOR THE MARKING OF
UNDERGROUND MEMBER UTILITIES.



LEGEND

- PROPOSED INTERMEDIATE CONTOUR..... 5522
- PROPOSED INDEX CONTOUR 5520
- EX. INTERMEDIATE CONTOUR 5364
- EX. INDEX CONTOUR 5365
- DIRECTION OF FLOW ←
- HIGH POINT..... HP
- LOW POINT LP
- PROPOSED STORM SEWER..... [Symbol]
- PROPOSED INLET..... [Symbol]
- PROPOSED MANHOLE..... [Symbol]
- LIMITS OF DISTURBANCE/
CONSTRUCTION SITE BOUNDARY..... [Symbol]
- CUT/FILL LINE..... [Symbol]
- 100-YR FLOODPLAIN..... [Symbol]

- NOTES:
1. OVERLOT GRADING WILL OCCUR ACROSS THE ENTIRETY OF THE SITE.
 2. WASTE DISPOSAL BIN LOCATIONS ARE TBD AND WILL BE ADDED TO THE SWMP ONCE DETERMINED BY THE CONTRACTOR.
 3. ONSITE LOCATION OF THE SWMP IS TBD AND WILL BE ADDED TO THE SWMP ONCE DETERMINED BY THE CONTRACTOR.
 4. IN THE EVENT THAT DEWATERING BECOMES NECESSARY THE CONTRACTOR, WITH INPUT FROM THE COUNTY STORMWATER INSPECTOR, WILL DESIGN THE LOCATIONS OF DIVERSION, PUMP & DISCHARGES.
 5. NO BATCH PLANTS WILL BE UTILIZED ONSITE.
 6. THE SITE CURRENTLY IS MADE UP OF ROUGHLY 98% NATIVE GRASSES AND VEGETATION.



PREPARED BY:



DREXEL, BARRELL & CO.
 Engineers • Surveyors
 101 SAWATCH ST. SUITE 100
 COLORADO SPGS, COLORADO 80903
 CONTACT: TIM D. MCCONNELL, P.E.
 (719) 475-7474
 COLORADO SPRINGS • LAFAYETTE

CLIENT:

FALCON FIELD, LLC.
 3230 ELECTRA DR N.
 COLORADO SPRINGS, CO 80906
 (719) 475-7474
 CONTACT: PJ ANDERSON

EARLY G.E.C. PLANS FOR:
**THE COMMONS AT
 FALCON FIELD**
 12445 RIO LANE, AND VACANT LAND
 PEYTON, EL PASO COUNTY, COLORADO

ISSUE	DATE
INITIAL ISSUE	2/12/24

DESIGNED BY: KGV
 DRAWN BY: CGH
 CHECKED BY: TDM
 FILE NAME: 21604-01EG1-4

PREPARED UNDER MY DIRECT
 SUPERVISION FOR AND ON
 BEHALF OF
 DREXEL, BARRELL & CO.

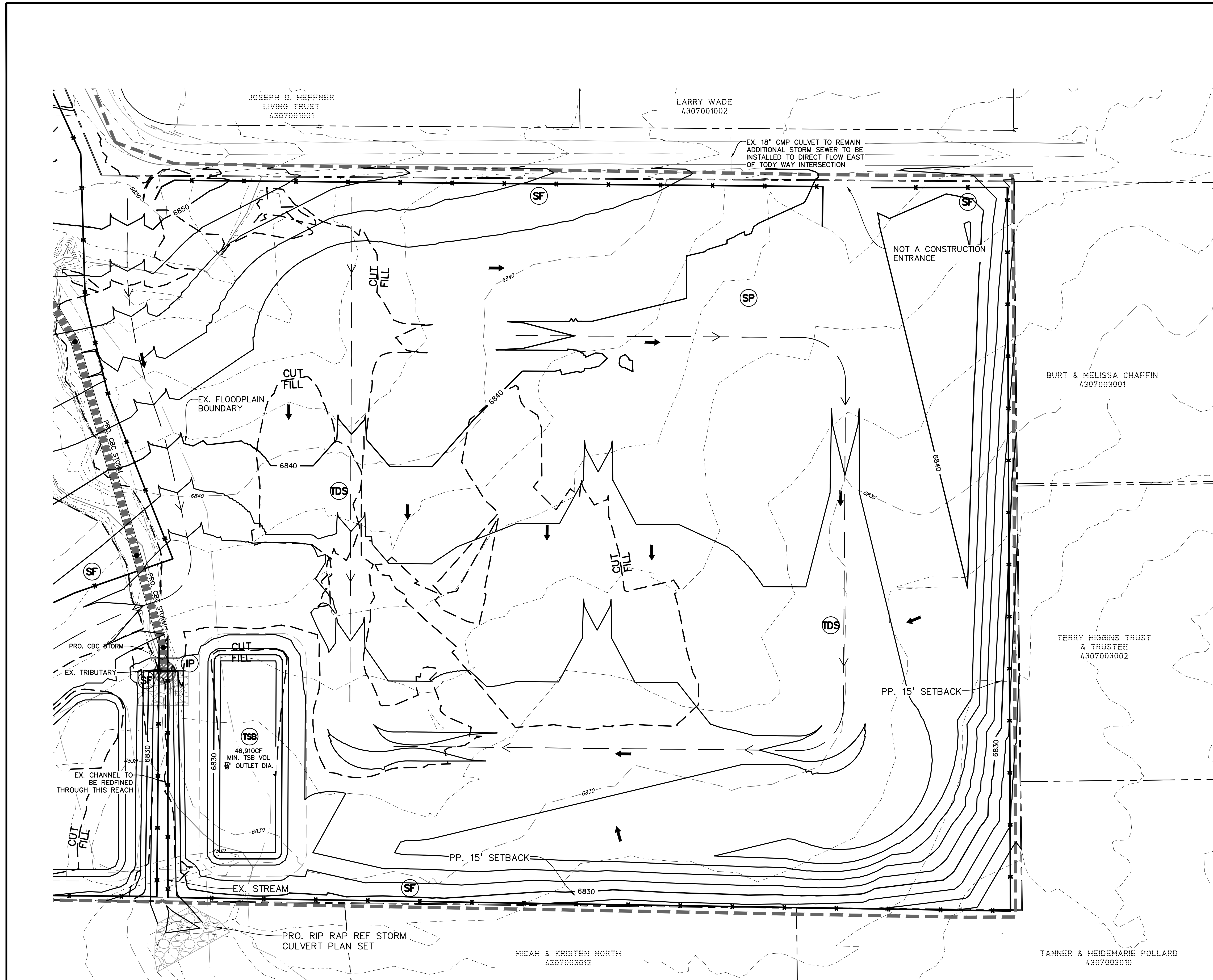
DRAWING SCALE:
 HORIZONTAL: 1" = 150'
 VERTICAL: N/A

**OVERALL INITIAL
 EROSION
 CONTROL PLAN**

PROJECT NO. 21604-00CSCV
 DRAWING NO.



OVR

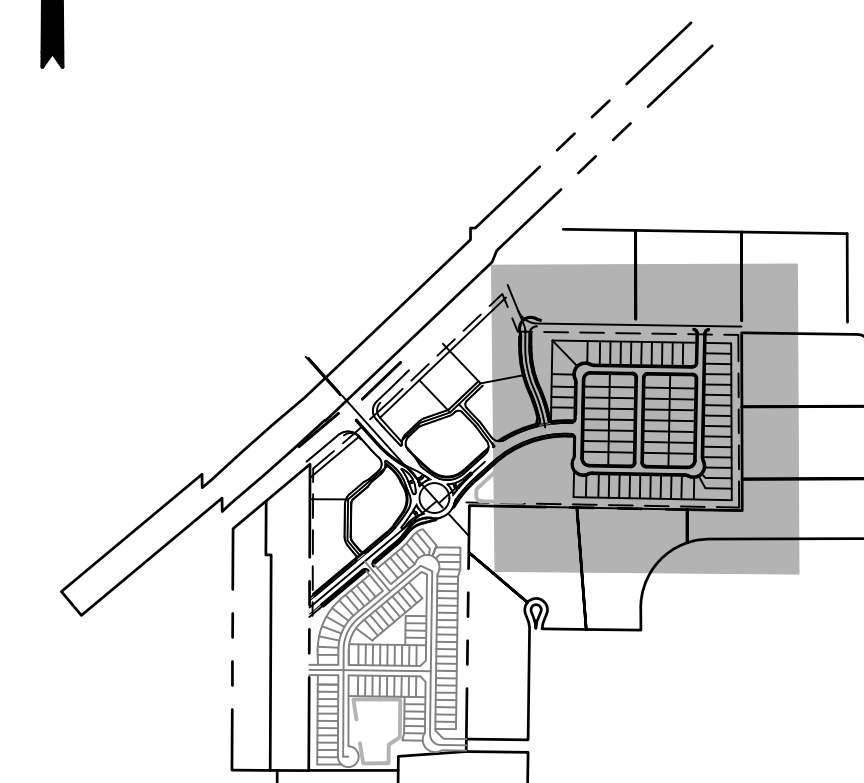
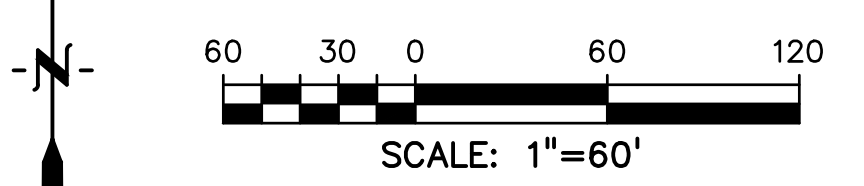


LEGEND

- PROPOSED INTERMEDIATE CONTOUR 5522
- PROPOSED INDEX CONTOUR 5520
- EX. INTERMEDIATE CONTOUR 5364
- EX. INDEX CONTOUR 5365
- DIRECTION OF FLOW ←
- HIGH POINT HP
- LOW POINT LP
- PROPOSED STORM SEWER —+—+—+—+—
- PROPOSED INLET ■
- PROPOSED MANHOLE ●
- LIMITS OF DISTURBANCE/
CONSTRUCTION SITE BOUNDARY - - - - -
- CUT/FILL LINE —+—+—
- 100-YR FLOODPLAIN —+—+—
- INITIAL/INTERIM STOCKPILE (SP)
- INITIAL/INTERIM SILT FENCE (SF) —
- INITIAL/INTERIM CONCRETE WASHOUT AREA (CWA) □
- INITIAL/INTERIM TEMPORARY SEDIMENT BASIN (TSB) □
- INITIAL/INTERIM VEHICLE TRACKING CONTROL (VTC) ▨
- INITIAL/INTERIM STABILIZED STAGN AREA (SSA) ○
- TEMPORARY DIVERSION SWALE (TDS) —→

NOTES:

1. OVERLOT GRADING WILL OCCUR ACROSS THE ENTIRETY OF THE SITE.
2. WASTE DISPOSAL BIN LOCATIONS ARE TBD AND WILL BE ADDED TO THE SWMP ONCE DETERMINED BY THE CONTRACTOR.
3. ONSITE LOCATION OF THE SSA IS TBD AND WILL BE ADDED TO THE SWMP ONCE DETERMINED BY THE CONTRACTOR.
4. IN THE NEED FOR DEWATERING IS NOT ANTICIPATED. IN THE EVENT THAT DEWATERING BECOMES NECESSARY THE CONTRACTOR, WITH INPUT FROM THE COUNTY STORMWATER INSPECTOR, WILL DESIGN THE LOCATIONS OF DIVERSION, PUMP & DISCHARGES.
5. NO BATCH PLANTS WILL BE UTILIZED ONSITE.
6. THE SITE CURRENTLY IS MADE UP OF ROUGHLY 98% NATIVE GRASSES AND VEGETATION.



PREPARED BY:

DREXEL, BARRELL & CO.
 Engineers • Surveyors
 101 SAWATCH ST. SUITE 100
 COLORADO SPGS, COLORADO 80903
 CONTACT: TIM D. MCCONNELL, P.E.
 (719) 475-7474
 COLORADO SPRINGS • LAFAYETTE

CLIENT:

FALCON FIELD, LLC.
 3230 ELECTRA DR N.
 COLORADO SPRINGS, CO 80906
 (719) 475-7474
 CONTACT: PJ ANDERSON

EARLY G.E.C. PLANS FOR:
**THE COMMONS AT
 FALCON FIELD**
 12445 RIO LANE, AND VACANT LAND
 PEYTON, EL PASO COUNTY, COLORADO

ISSUE	DATE
INITIAL ISSUE	2/12/24

DESIGNED BY: KGV
 DRAWN BY: CGH
 CHECKED BY: TDM
 FILE NAME: 21604-01EG1-4

PREPARED UNDER MY DIRECT SUPERVISION FOR AND ON BEHALF OF DREXEL, BARRELL & CO.

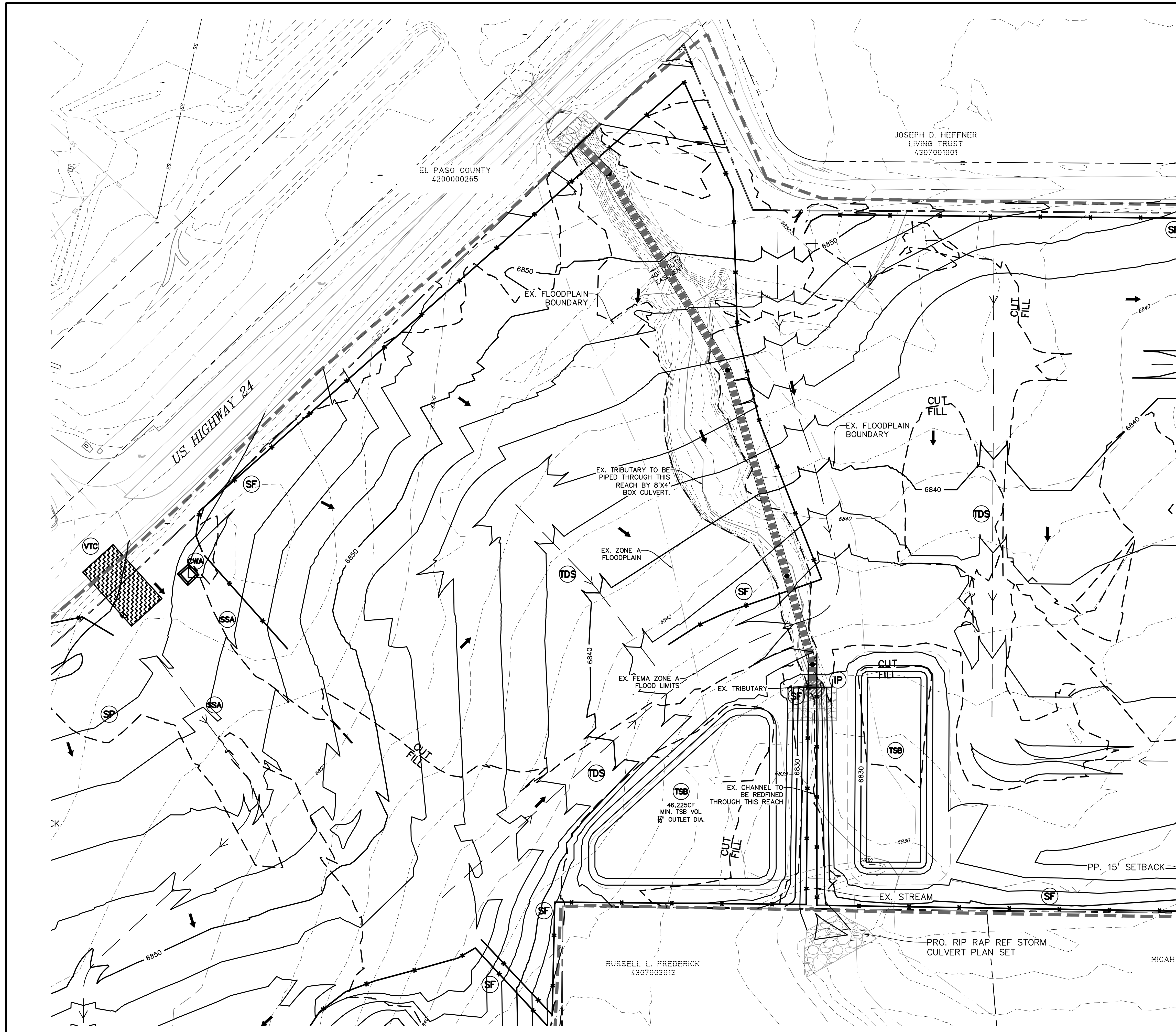
DRAWING SCALE:
 HORIZONTAL: 1" = 60'
 VERTICAL: N/A

**INITIAL
 EROSION
 CONTROL PLAN**

PROJECT NO. 21604-00CSCV
 DRAWING NO.

EC-1

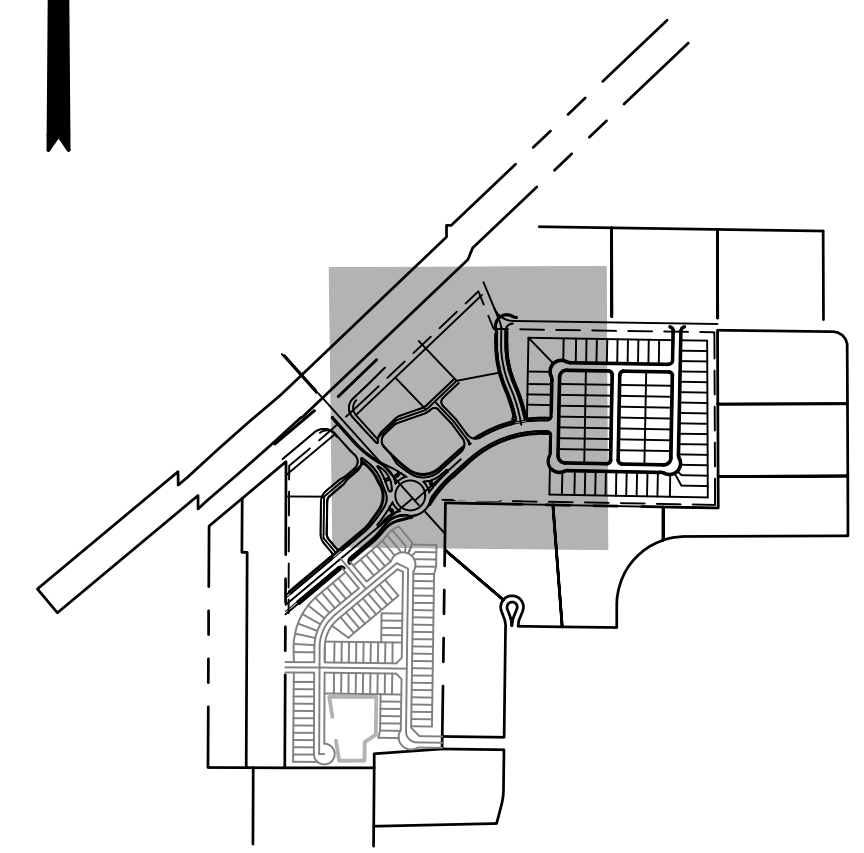
811 Know what's below.
 Call before you dig.
 CALL 3-BUSINESS DAYS IN ADVANCE
 BEFORE YOU DIG, GRADE, OR
 EXCAVATE FOR THE MARKING OF
 UNDERGROUND MEMBER UTILITIES.



LEGEND

PROPOSED INTERMEDIATE CONTOUR 5522
PROPOSED INDEX CONTOUR 5520
EX. INTERMEDIATE CONTOUR 5364
EX. INDEX CONTOUR 5365
DIRECTION OF FLOW	←
HIGH POINT	HP
LOW POINT	LP
PROPOSED STORM SEWER	———
PROPOSED INLET	■
PROPOSED MANHOLE	●
LIMITS OF DISTURBANCE/ CONSTRUCTION SITE BOUNDARY	- - - -
CUT/FILL LINE	— CUT — FILL
100-YR FLOODPLAIN
INITIAL/INTERIM STOCKPILE (SEE DETAIL SHEET 12)	(SP)
INITIAL/INTERIM SILT FENCE (SEE DETAIL SHEET 12)	(SF) — X
INITIAL/INTERIM CONCRETE WASHOUT AREA (SEE DETAIL SHEET 12)	(CWA) □
INITIAL/INTERIM TEMPORARY SEDIMENT BASIN (SEE DETAIL SHEET 12)	(TSB) [Pattern]
INITIAL/INTERIM VEHICLE TRACKING CONTROL (SEE DETAIL SHEET 11)	(VTC) [Pattern]
INITIAL/INTERIM STABILIZED STAGN AREA TO BE LOCATED BY CONTRACTOR	(SSA) [Pattern]
TEMPORARY DIVERSION SWALE	(TDS) —>

- NOTES:
- OVERLOT GRADING WILL OCCUR ACROSS THE ENTIRETY OF THE SITE.
 - WASTE DISPOSAL BIN LOCATIONS ARE TBD AND WILL BE ADDED TO THE SWMP ONCE DETERMINED BY THE CONTRACTOR.
 - ONSITE LOCATION OF THE SSA IS TBD AND WILL BE ADDED TO THE SWMP ONCE DETERMINED BY THE CONTRACTOR.
 - THE NEED FOR DEWATERING IS NOT ANTICIPATED. IN THE EVENT THAT DEWATERING BECOMES NECESSARY THE CONTRACTOR, WITH INPUT FROM THE COUNTY STORMWATER INSPECTOR, WILL DESIGN THE LOCATIONS OF DIVERSION, PUMP & DISCHARGES.
 - NO BATCH PLANTS WILL BE UTILIZED ONSITE.
 - THE SITE CURRENTLY IS MADE UP OF ROUGHLY 98% NATIVE GRASSES AND VEGETATION.



811 Know what's below.
Call before you dig.
CALL 3-BUSINESS DAYS IN ADVANCE BEFORE YOU DIG, GRADE, OR EXCAVATE FOR THE MARKING OF UNDERGROUND MEMBER UTILITIES.

PREPARED BY:

DREXEL, BARRELL & CO.
 Engineers • Surveyors
 101 SAWATCH ST. SUITE 100
 COLORADO SPGS, COLORADO 80903
 CONTACT: TIM D. MCCONNELL, P.E.
 (719) 475-7474
 COLORADO SPRINGS • LAFAYETTE

CLIENT:
FALCON FIELD, LLC.
 3230 ELECTRA DR. N.
 COLORADO SPRINGS, CO 80906
 (719) 475-7474
 CONTACT: PJ ANDERSON

EARLY G.E.C. PLANS FOR:
**THE COMMONS AT
 FALCON FIELD**
 12445 RIO LANE, AND VACANT LAND
 PEYTON, EL PASO COUNTY, COLORADO

ISSUE	DATE
INITIAL ISSUE	2/12/24

DESIGNED BY: KGV
 DRAWN BY: CGH
 CHECKED BY: TDM
 FILE NAME: 21604-01EG1-4

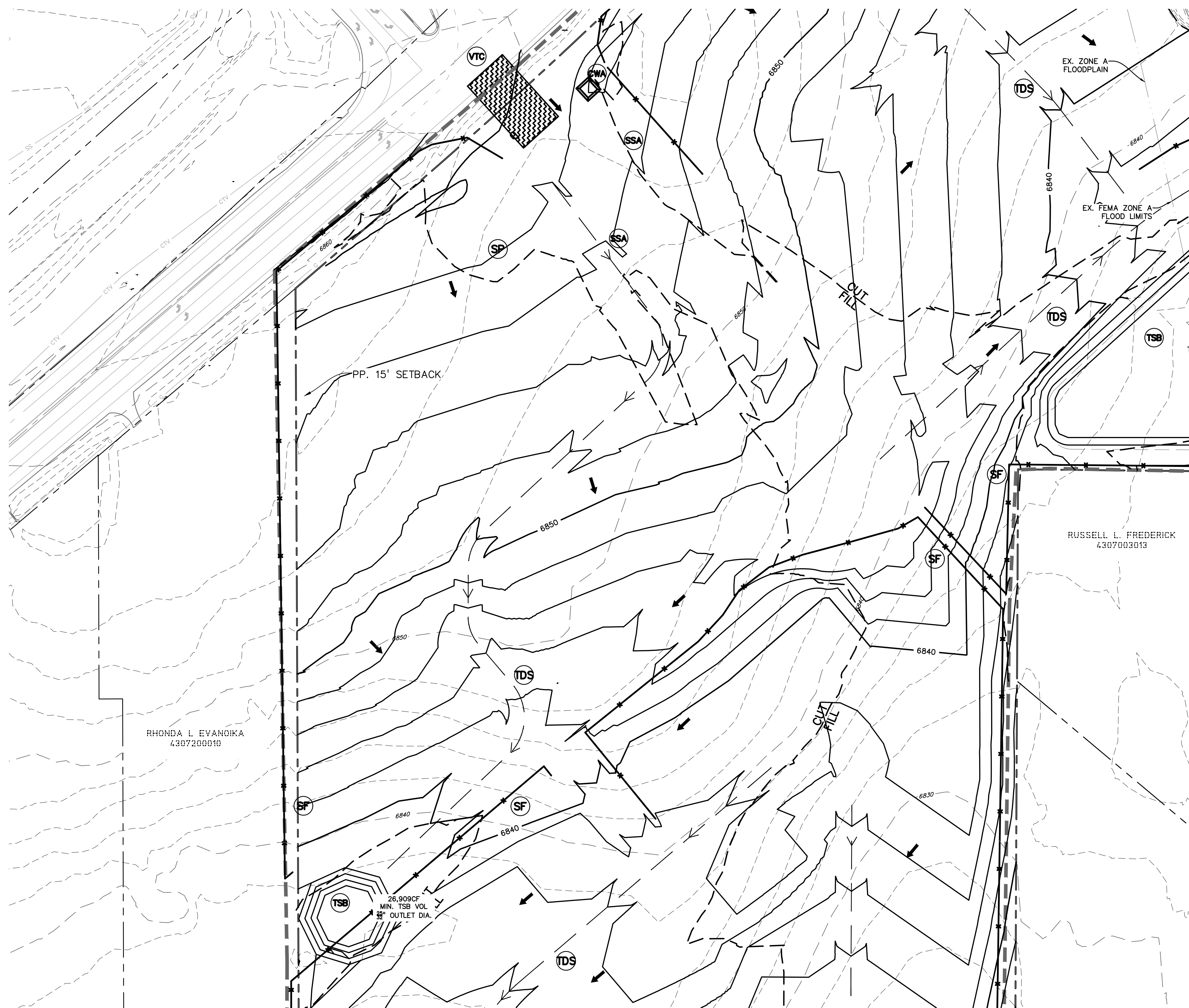
PREPARED UNDER MY DIRECT SUPERVISION FOR AND ON BEHALF OF DREXEL, BARRELL & CO.

DRAWING SCALE:
 HORIZONTAL: 1" = 60'
 VERTICAL: N/A

INITIAL
 EROSION
 CONTROL PLAN

PROJECT NO. 21604-00CSCV
 DRAWING NO.

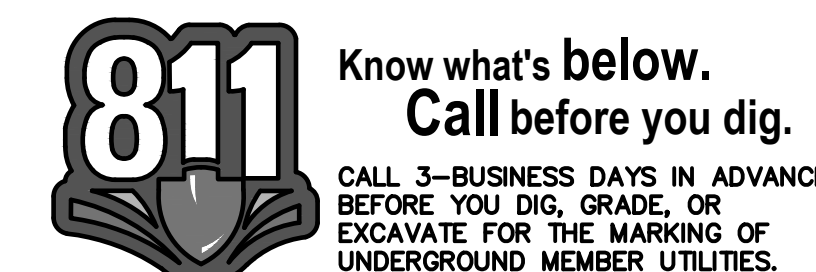
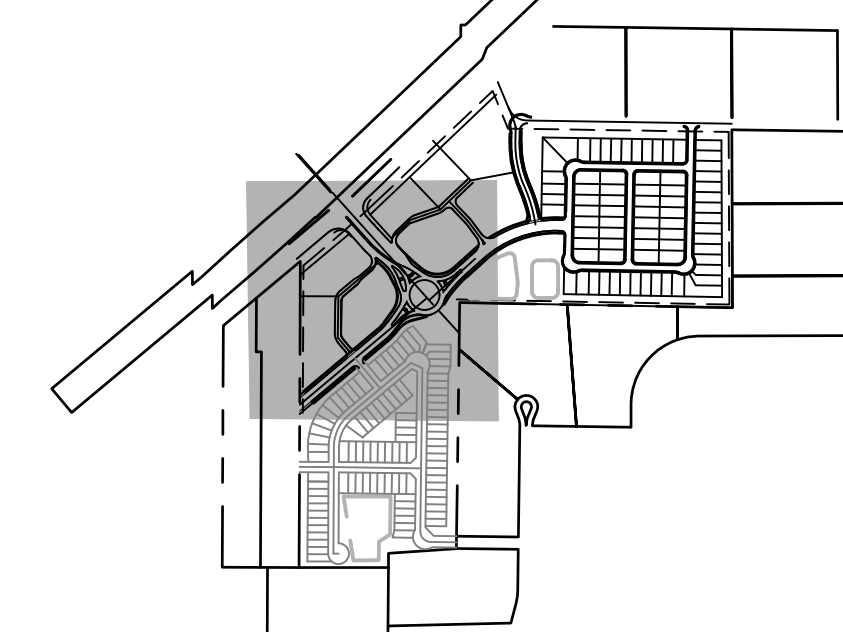
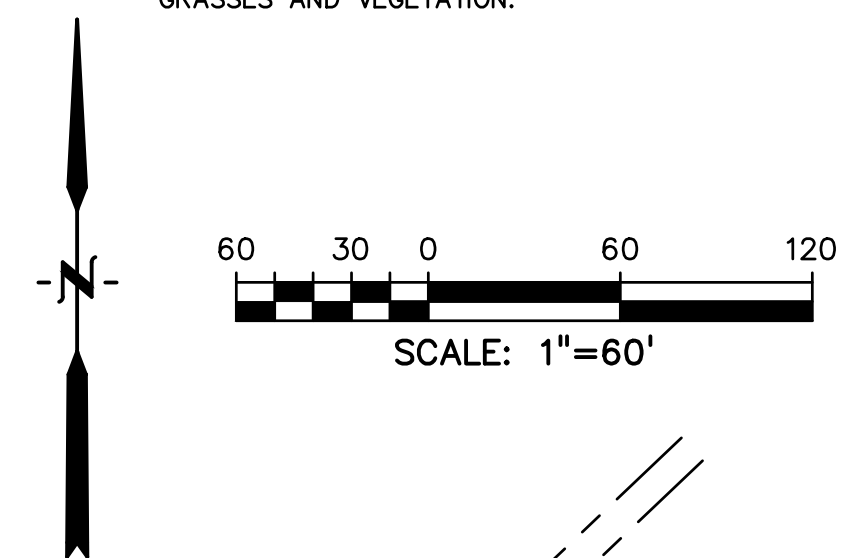
EC-2



LEGEND

- PROPOSED INTERMEDIATE CONTOUR 5522
- PROPOSED INDEX CONTOUR 5520
- EX. INTERMEDIATE CONTOUR 5364
- EX. INDEX CONTOUR 5365
- DIRECTION OF FLOW ←
- HIGH POINT HP
- LOW POINT LP
- PROPOSED STORM SEWER ————
- PROPOSED INLET ————
- PROPOSED MANHOLE ●
- LIMITS OF DISTURBANCE/
CONSTRUCTION SITE BOUNDARY - - - -
- CUT/FILL LINE ———— CUT / ———— FILL
- 100-YR FLOODPLAIN ————
- INITIAL/INTERIM STOCKPILE (SP)
- INITIAL/INTERIM SILT FENCE (SF) ✕
- INITIAL/INTERIM CONCRETE WASHOUT AREA (CWA) □
- INITIAL/INTERIM TEMPORARY SEDIMENT BASIN (TSB) ○
- INITIAL/INTERIM VEHICLE TRACKING CONTROL (VTC) ■■■■
- INITIAL/INTERIM STABILIZED STAGIN AREA (SSA) ○
- TO BE LOCATED BY CONTRACTOR
- TEMPORARY DIVERSION SWALE (TDS) ———— →

- NOTES:
- OVERLOT GRADING WILL OCCUR ACROSS THE ENTIRETY OF THE SITE.
 - WASTE DISPOSAL BIN LOCATIONS ARE TBD AND WILL BE ADDED TO THE SWMP ONCE DETERMINED BY THE CONTRACTOR.
 - ONSITE LOCATION OF THE SSA IS TBD AND WILL BE ADDED TO THE SWMP ONCE DETERMINED BY THE CONTRACTOR.
 - IN THE NEED FOR DEWATERING IS NOT ANTICIPATED, IN THE EVENT THAT DEWATERING BECOMES NECESSARY THE CONTRACTOR, WITH INPUT FROM THE COUNTY STORMWATER INSPECTOR, WILL DESIGN THE LOCATIONS OF DIVERSION, PUMP & DISCHARGES.
 - NO BATCH PLANTS WILL BE UTILIZED ONSITE.
 - THE SITE CURRENTLY IS MADE UP OF ROUGHLY 98% NATIVE GRASSES AND VEGETATION.



PREPARED BY:



CLIENT:

FALCON FIELD, LLC.
3230 ELECTRA DR N.
COLORADO SPRINGS, CO 80906
(719) 475-7474
CONTACT: PJ ANDERSON

EARLY G.E.C. PLANS FOR:
**THE COMMONS AT
FALCON FIELD**
12445 RIO LANE, AND VACANT LAND
PEYTON, EL PASO COUNTY, COLORADO

ISSUE	DATE
INITIAL ISSUE	2/12/24

DESIGNED BY: KGV
DRAWN BY: CGH
CHECKED BY: TDM
FILE NAME: 21604-01EG1-4

PREPARED UNDER MY DIRECT
SUPERVISION FOR AND ON
BEHALF OF
DREXEL, BARRELL & CO.

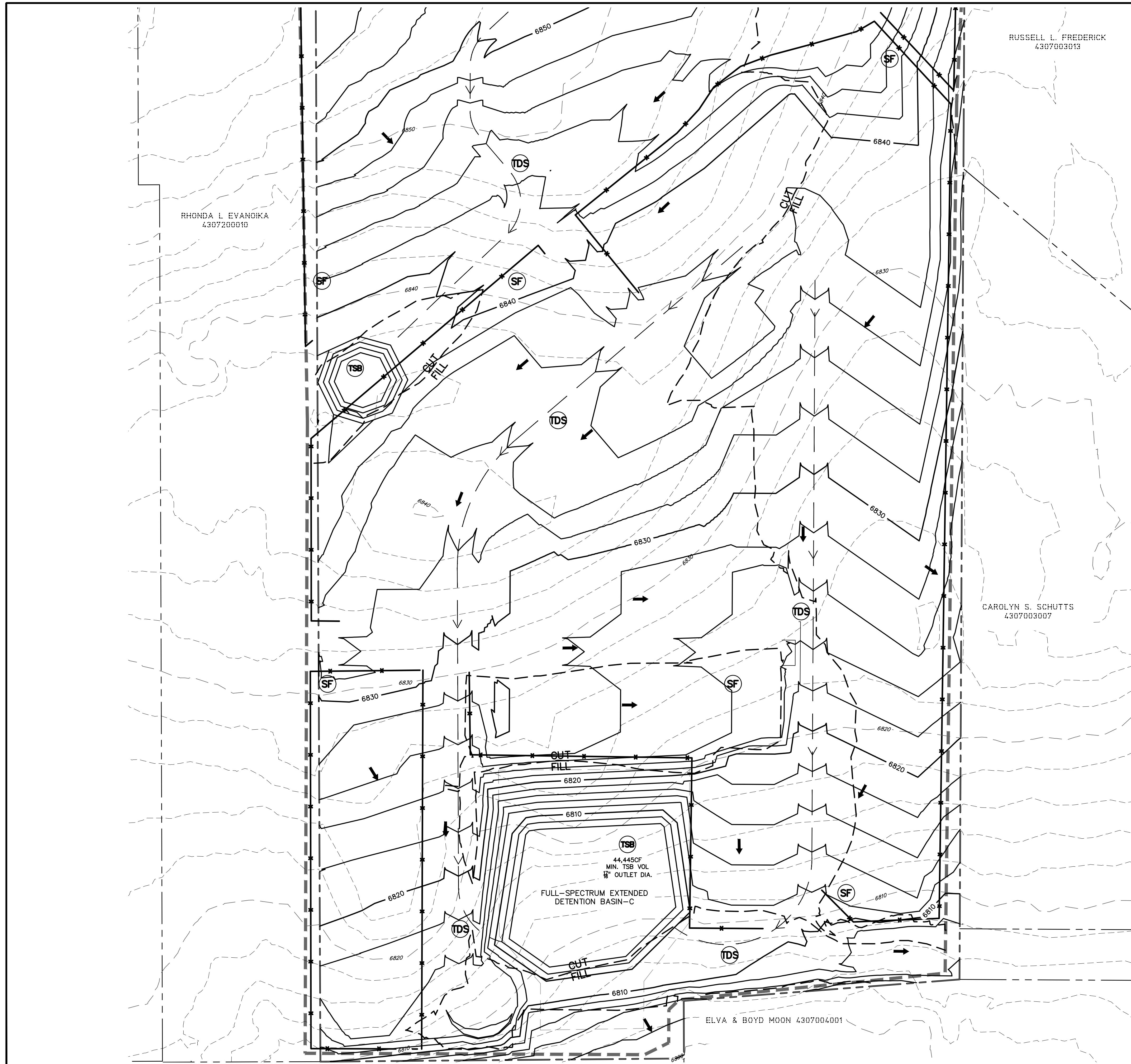
DRAWING SCALE:
HORIZONTAL: 1" = 60'
VERTICAL: N/A

INITIAL
EROSION
CONTROL PLAN

PROJECT NO. 21604-00CSCV
DRAWING NO.

EC-3

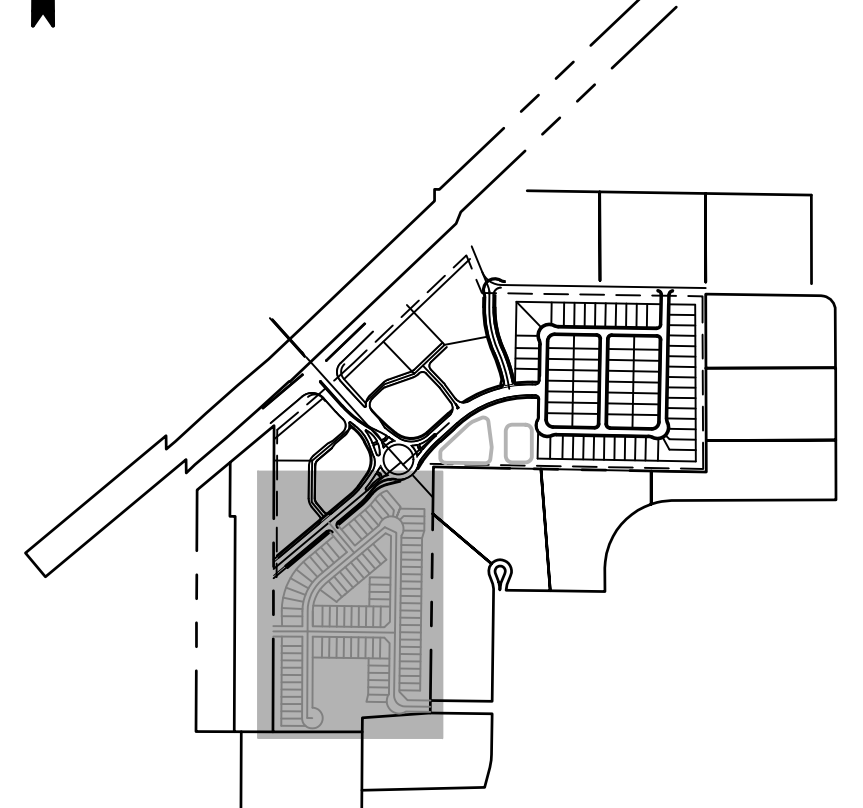
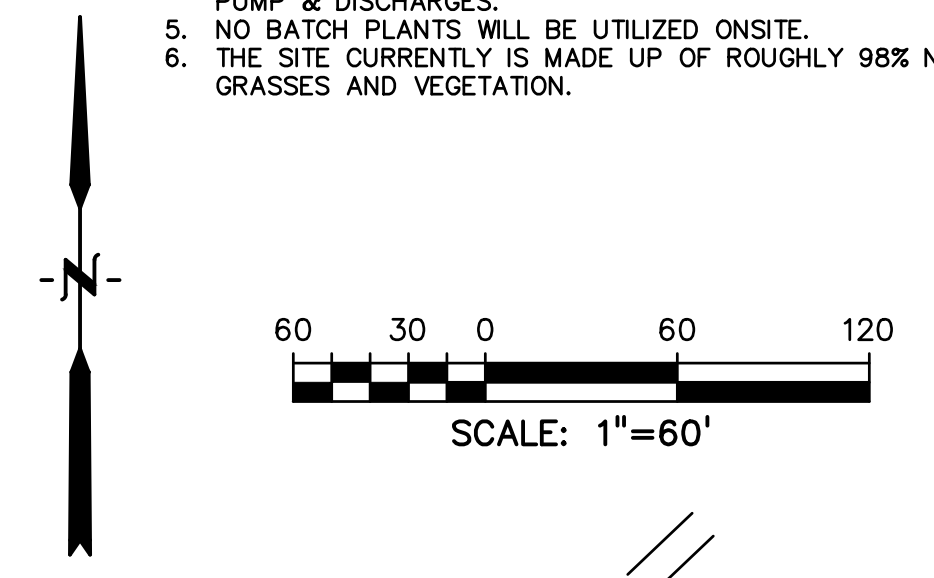
SHEET: 5 OF 8



LEGEND

- PROPOSED INTERMEDIATE CONTOUR 5522
- PROPOSED INDEX CONTOUR 5520
- EX. INTERMEDIATE CONTOUR 5364
- EX. INDEX CONTOUR 5365
- DIRECTION OF FLOW ←
- HIGH POINT HP
- LOW POINT LP
- PROPOSED STORM SEWER ————
- PROPOSED INLET ■
- PROPOSED MANHOLE ●
- LIMITS OF DISTURBANCE/
CONSTRUCTION SITE BOUNDARY - - - - -
- CUT/FILL LINE ———— CUT / ———— FILL
- 100-YR FLOODPLAIN ————
- INITIAL/INTERIM STOCKPILE (SP)
- INITIAL/INTERIM SILT FENCE (SF) — X
- INITIAL/INTERIM CONCRETE WASHOUT AREA (CWA) □
- INITIAL/INTERIM TEMPORARY SEDIMENT BASIN (TSB) □
- INITIAL/INTERIM VEHICLE TRACKING CONTROL (VTC) [hatched pattern]
- INITIAL/INTERIM STABILIZED STAGIN AREA (SSA) ○
- TO BE LOCATED BY CONTRACTOR
- TEMPORARY DIVERSION SWALE (TDS) —>

- NOTES:**
- OVERLOT GRADING WILL OCCUR ACROSS THE ENTIRETY OF THE SITE.
 - WASTE DISPOSAL BIN LOCATIONS ARE TBD AND WILL BE ADDED TO THE SWMP ONCE DETERMINED BY THE CONTRACTOR.
 - ONSITE LOCATION OF THE SSA IS TBD AND WILL BE ADDED TO THE SWMP ONCE DETERMINED BY THE CONTRACTOR.
 - THE NEED FOR DEWATERING IS NOT ANTICIPATED. IN THE EVENT THAT DEWATERING BECOMES NECESSARY THE CONTRACTOR, WITH INPUT FROM THE COUNTY STORMWATER INSPECTOR, WILL DESIGN THE LOCATIONS OF DIVERSION, PUMP & DISCHARGES.
 - NO BATCH PLANTS WILL BE UTILIZED ONSITE.
 - THE SITE CURRENTLY IS MADE UP OF ROUGHLY 98% NATIVE GRASSES AND VEGETATION.



PREPARED BY:

DREXEL, BARRELL & CO.
 Engineers • Surveyors
 101 SAIWATCH ST. SUITE 100
 COLORADO SPGS, COLORADO 80903
 CONTACT: TIM D. MCCONNELL, P.E.
 (719) 475-7474
 COLORADO SPRINGS • LAFAYETTE

CLIENT:

FALCON FIELD, LLC.
 3230 ELECTRA DR N.
 COLORADO SPRINGS, CO 80906
 (719) 475-7474
 CONTACT: PJ ANDERSON

EARLY G.E.C. PLANS FOR:
**THE COMMONS AT
 FALCON FIELD**
 12445 RIO LANE, AND VACANT LAND
 PEYTON, EL PASO COUNTY, COLORADO

ISSUE	DATE
INITIAL ISSUE	2/12/24

DESIGNED BY: KGV
 DRAWN BY: CGH
 CHECKED BY: TDM
 FILE NAME: 21604-01EG1-4

PREPARED UNDER MY DIRECT
 SUPERVISION FOR AND ON
 BEHALF OF
 DREXEL, BARRELL & CO.

DRAWING SCALE:
 HORIZONTAL: 1" = 60'
 VERTICAL: N/A

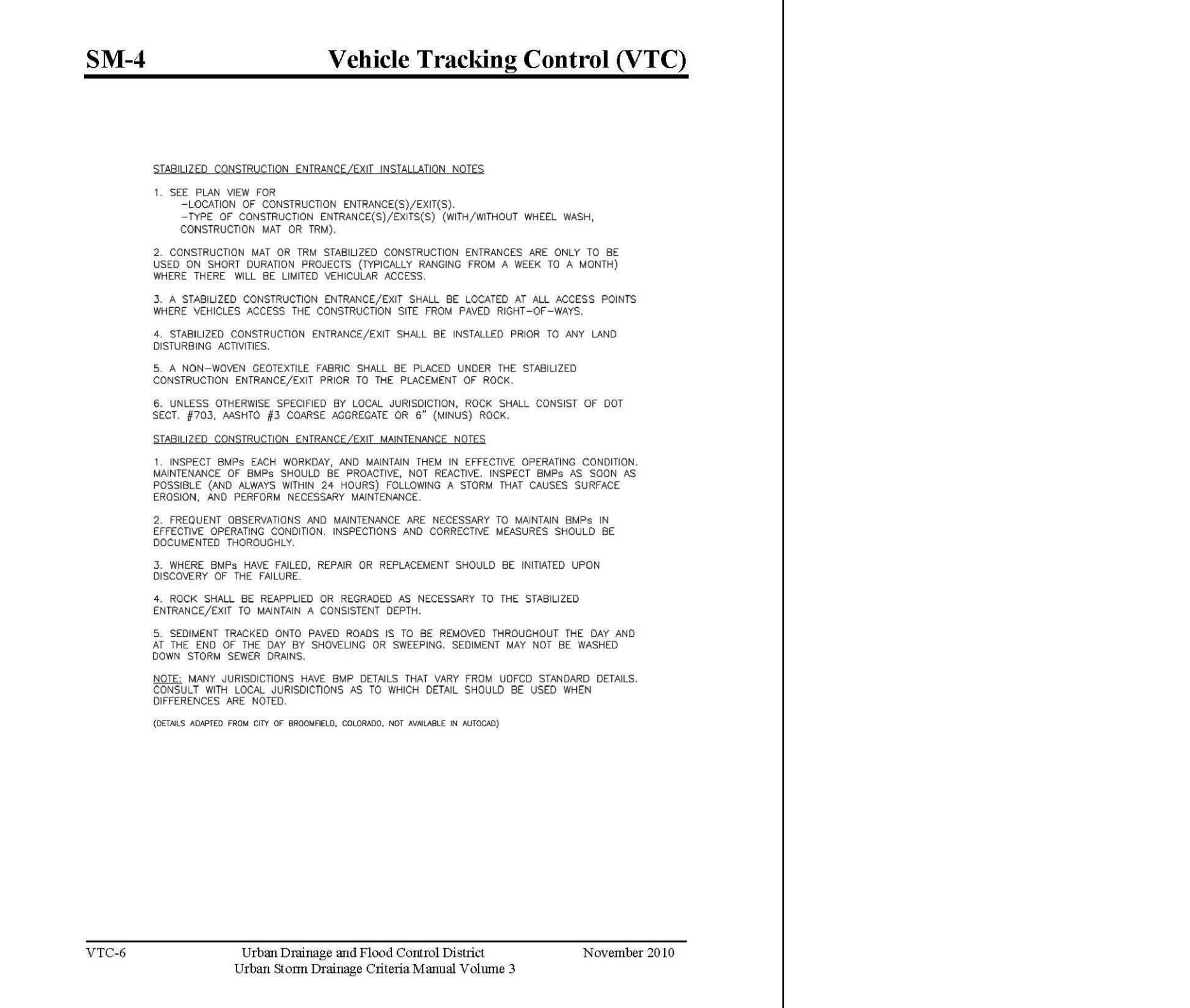
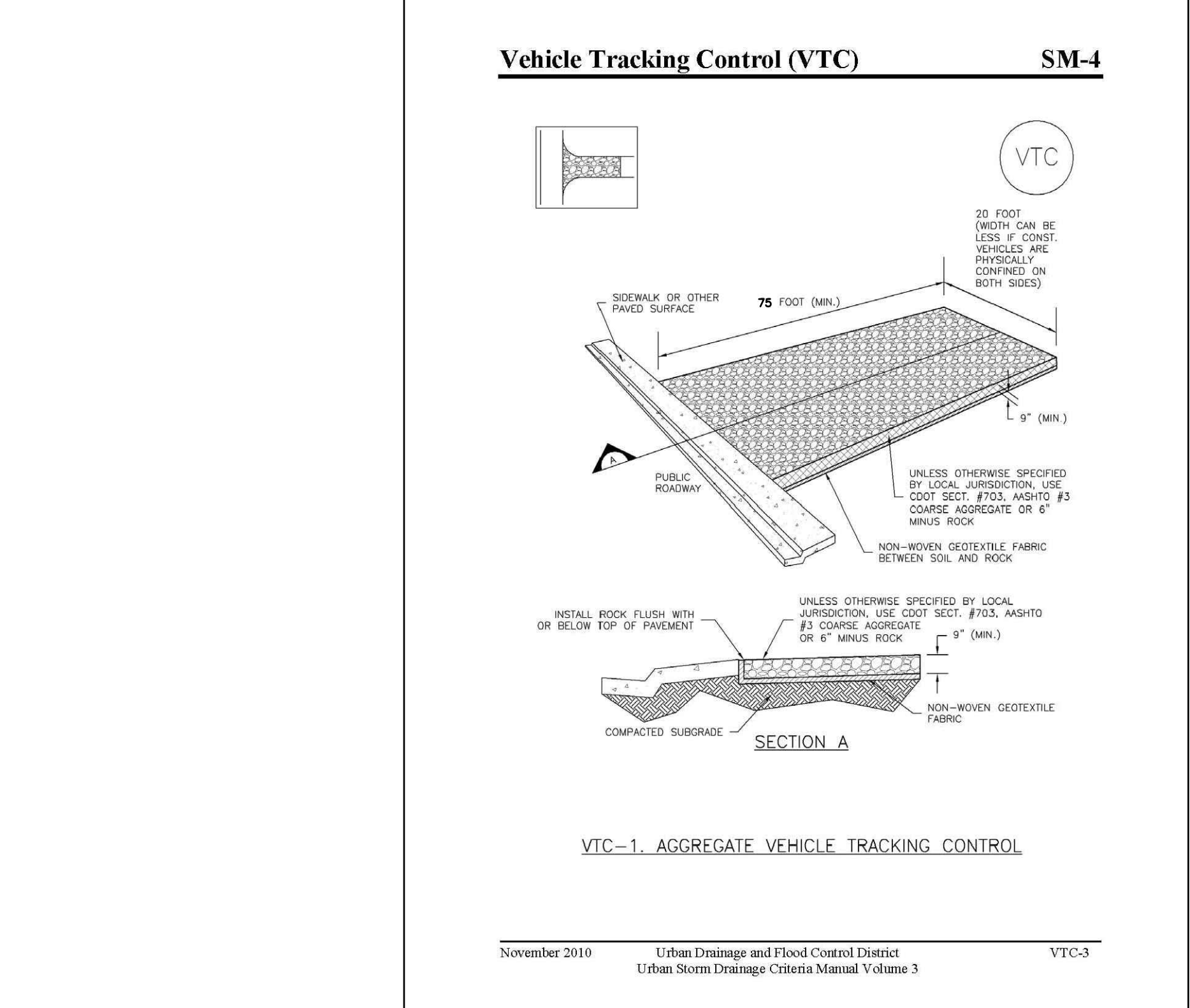
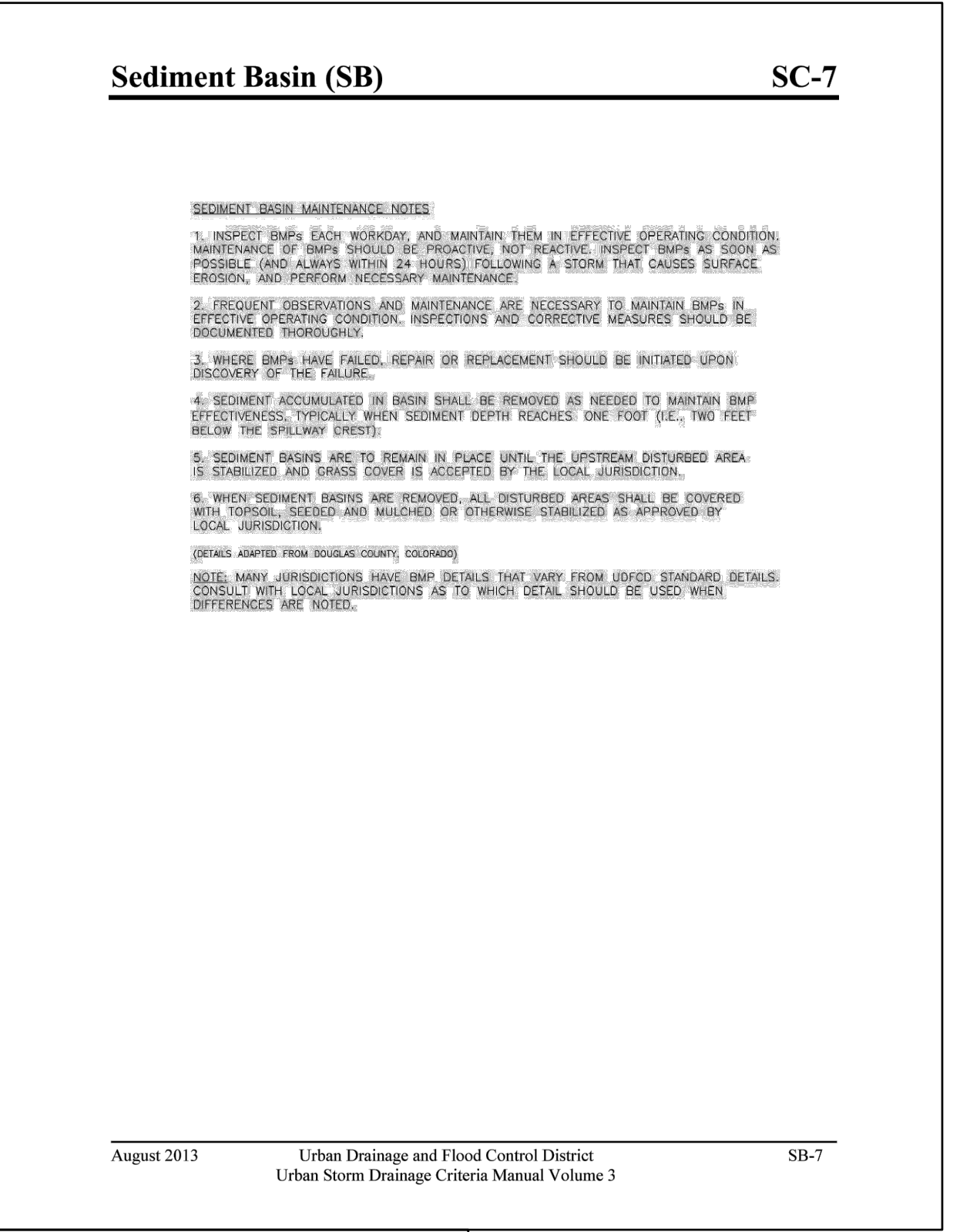
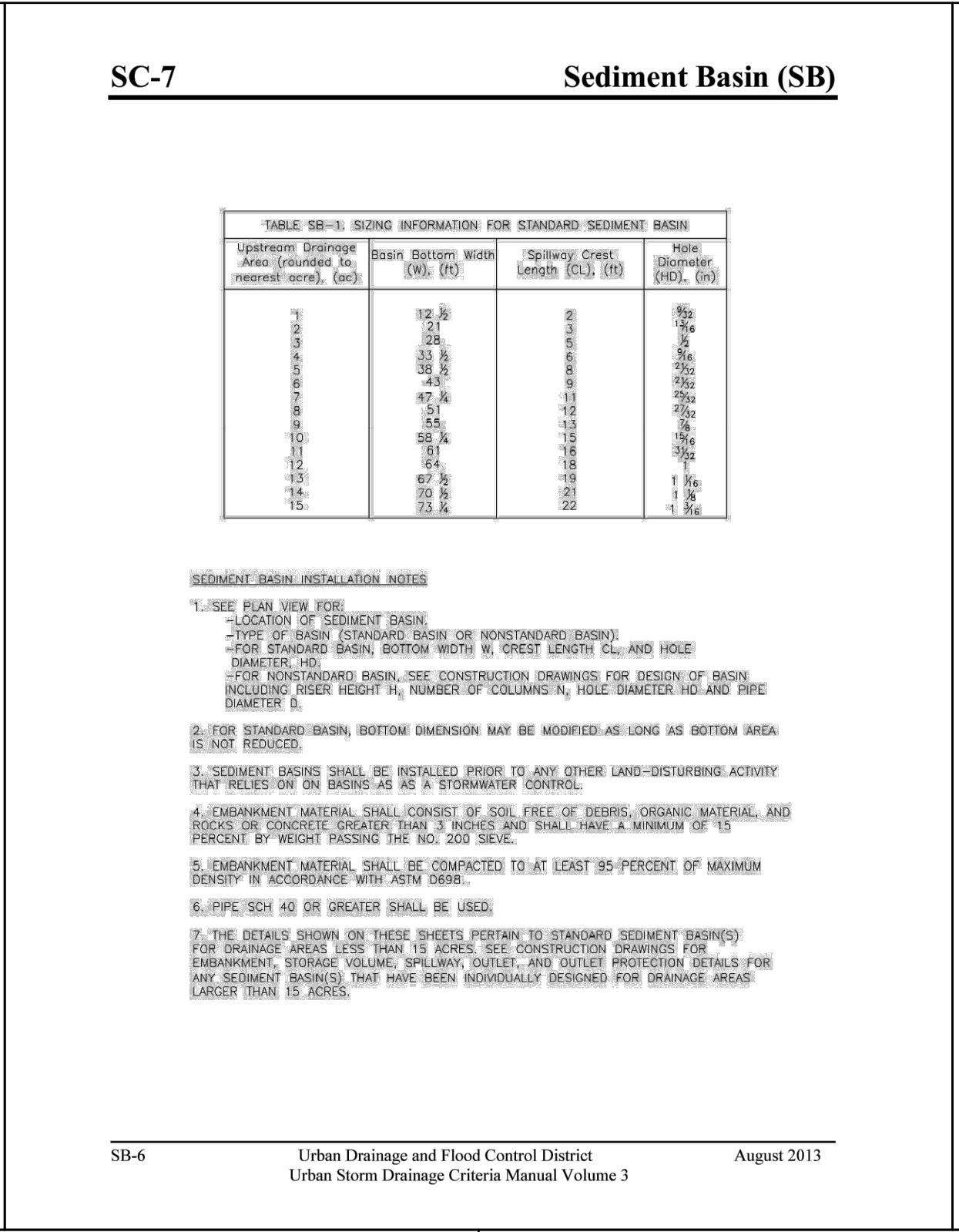
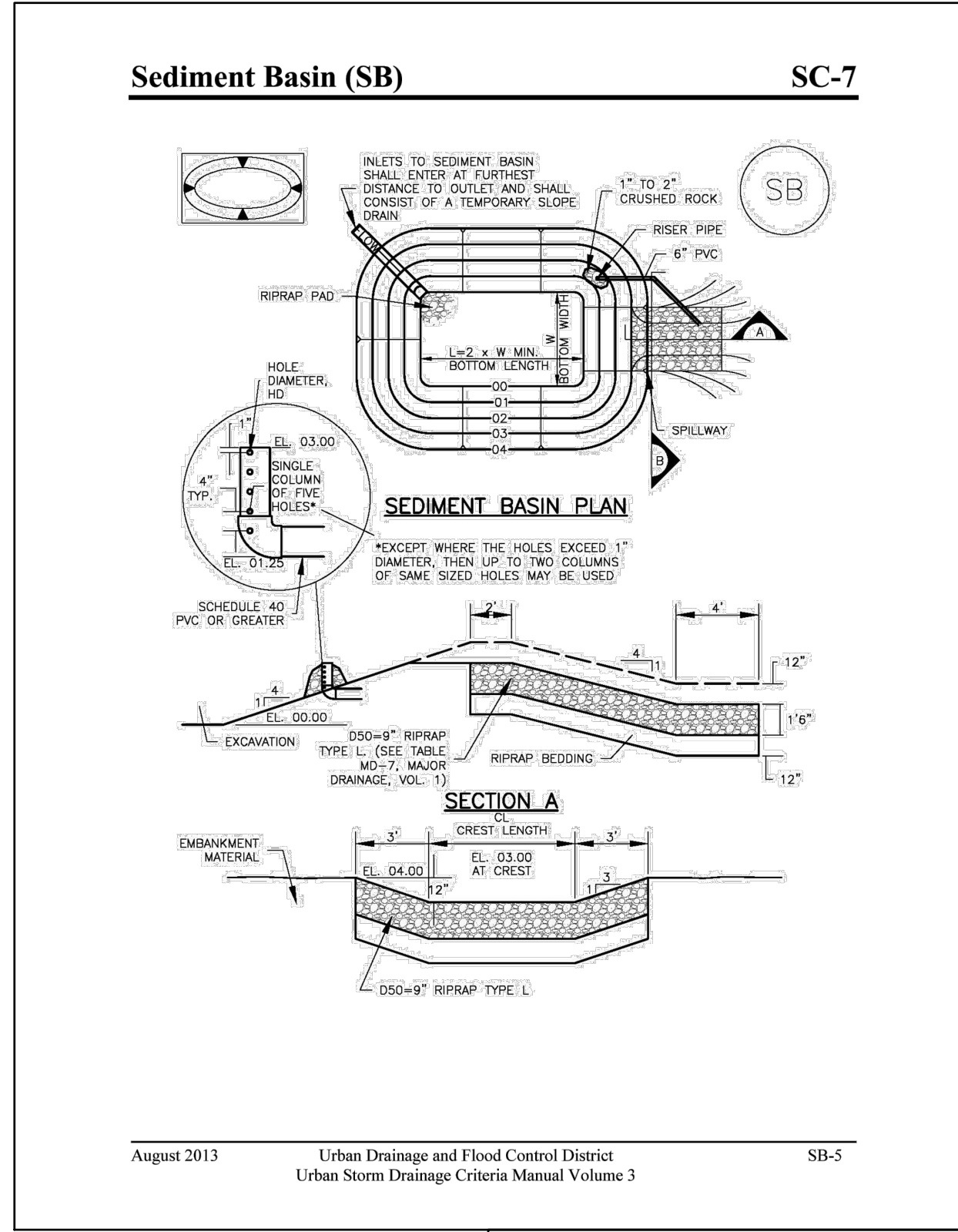
**INITIAL
 EROSION
 CONTROL PLAN**

PROJECT NO. 21604-00CSCV
 DRAWING NO.

811 Know what's below.
 Call before you dig.
 CALL 3-BUSINESS DAYS IN ADVANCE
 BEFORE YOU DIG, GRADE, OR
 EXCAVATE FOR THE MARKING OF
 UNDERGROUND MEMBER UTILITIES.

EC-4

SHEET: 6 OF 8



PREPARED BY:



CLIENT:

FALCON FIELD, LLC.
3230 ELECTRA DR. N.
COLORADO SPRINGS, CO 80906
(719) 475-7474
CONTACT: PJ ANDERSON

EARLY G.E.C. PLANS FOR:
**THE COMMONS AT
FALCON FIELD**
12445 RIO LANE, AND VACANT LAND
PEYTON, EL PASO COUNTY, COLORADO

ISSUE	DATE
INITIAL ISSUE	2/12/24
DESIGNED BY:	TDM
DRAWN BY:	CGH
CHECKED BY:	TDM
FILE NAME:	21604-00EGD11-2

PREPARED UNDER MY DIRECT SUPERVISION FOR AND ON BEHALF OF DREXEL, BARRELL & CO.

DRAWING SCALE:
HORIZONTAL: N/A
VERTICAL: N/A

EROSION CONTROL DETAILS

PROJECT NO. 21604-00CSCV
DRAWING NO.

DT-1

SHEET: 7 OF 8



