

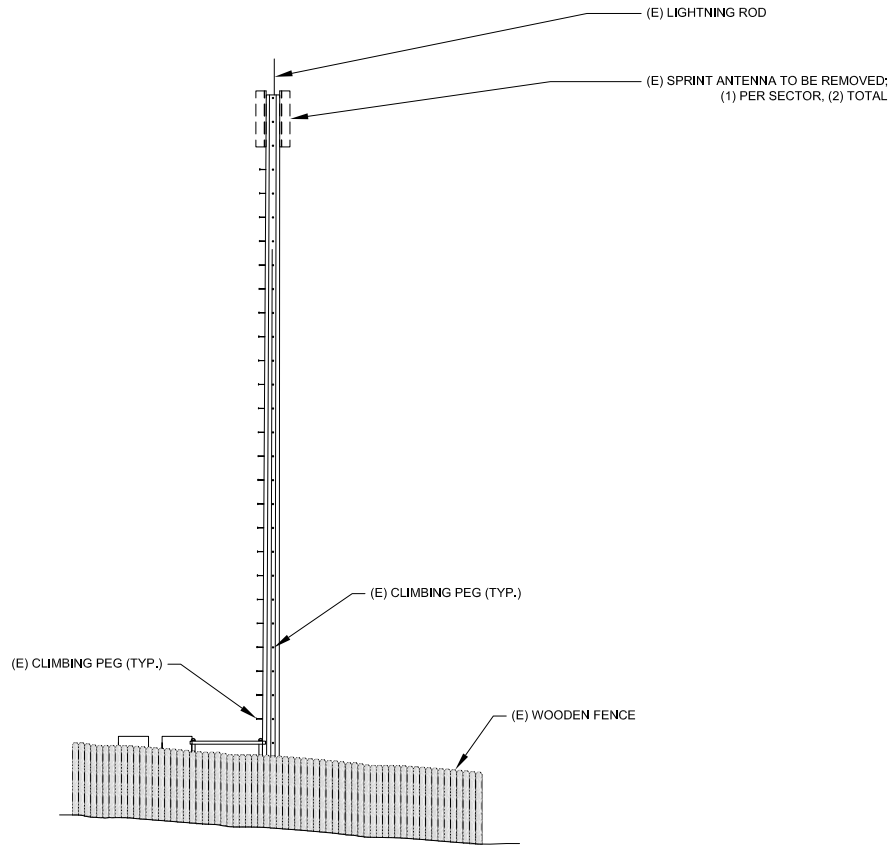
TOP OF (E) SPRINT PANEL ANTENNAS
ELEV. 60'-4" AGL

TOP OF (E) MONOPOLE
ELEV. 60'-0" AGL

RAD CENTER OF (E) SPRINT PANEL ANTENNAS
ELEV. 58'-0" AGL

(E) EQUIPMENT PLATFORM LEVEL
ELEV. ±1'-6" AGL

GROUND LEVEL
ELEV. 0'-0" AGL



EXISTING SOUTHWEST ELEVATION

24"x36" SCALE: 1/8" = 1'-0"
11"x17" SCALE: 1/4" = 1'-0"

0" 4' 8' 16'

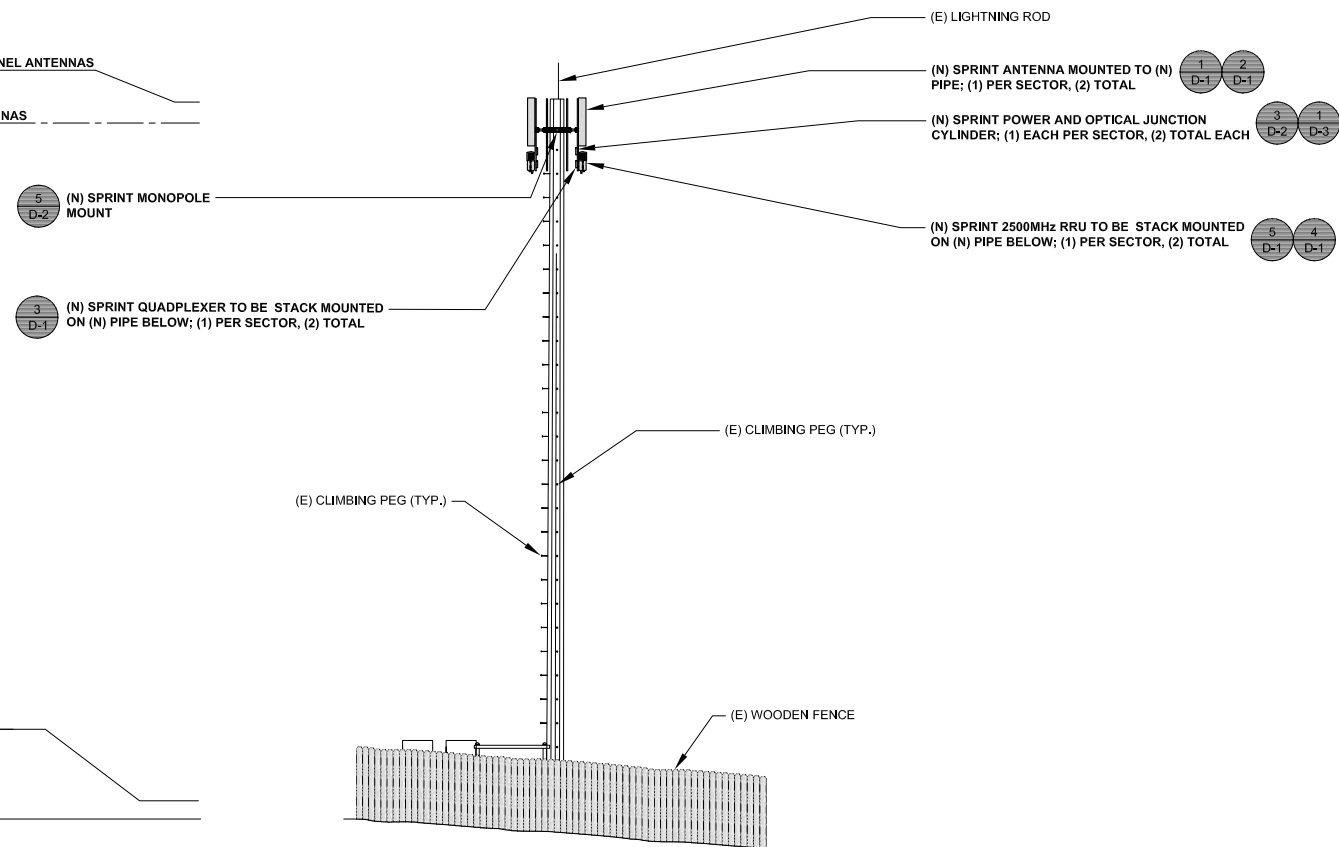
1

TOP OF (E) MONOPOLE AND (N) SPRINT PANEL ANTENNAS
ELEV. 60'-0" AGL

RAD CENTER OF (N) SPRINT PANEL ANTENNAS
ELEV. 58'-0" AGL

(E) EQUIPMENT PLATFORM LEVEL
ELEV. ±1'-6" AGL

GROUND LEVEL
ELEV. 0'-0" AGL



PROPOSED SOUTHWEST ELEVATION

24"x36" SCALE: 1/8" = 1'-0"
11"x17" SCALE: 1/4" = 1'-0"

0" 4' 8' 16'

2



M SQUARE
WIRELESS

1387 CALLE AVANZADO
SAN CLEMENTE CA 92673 (949) 391-8824

DRAWN BY: MB
CHECKED BY: MM

REV	DATE	DESCRIPTION
B	11/30/2017	90% CD'S - REVISED
A	11/2/2017	90% CD'S FOR REVIEW

IT IS A VIOLATION OF LAW FOR ANY PERSON, UNLESS THEY ARE ACTING UNDER THE DIRECTION OF A LICENSED PROFESSIONAL ENGINEER, TO ALTER THIS DOCUMENT.

USWW MANITOU WATER
DN14XC247
7225 WEST HIGHWAY 24
MANITOU SPRINGS, CO 80829
MONOPOLE

SHEET TITLE
ELEVATIONS

SHEET NUMBER
A-4