



STRUCTURAL DESIGN

ENCLOSED BUILDING

20x26x8

**MAXIMUM 30'-0" WIDE X 20'-0" EAVE HEIGHT- ~~BOX EAVE~~
~~FRAME AND~~ BOW FRAME**

15 October 2019

Revision 3

M&A Project No. 17149S/18285S/19214S/19302S

Prepared for:

Coast to Coast Carports, Inc.
22425 I-40
Knoxville, Arkansas 72845






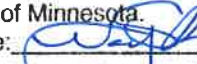

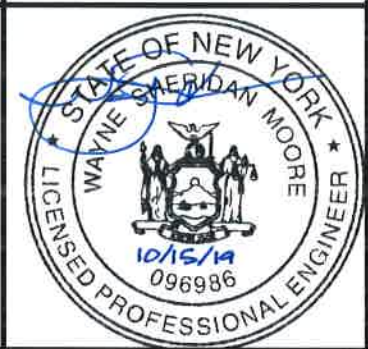
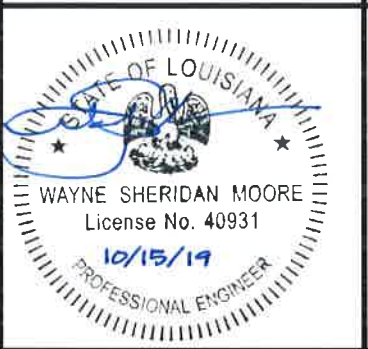

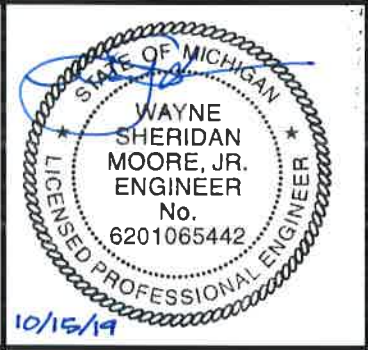

Prepared by:

Moore and Associates Engineering and Consulting, Inc.

1009 East Avenue
North Augusta, SC 29841

401 S. Main Street, Suite 200
Mount Airy, NC 27030



			
		<p>I hereby certify that this plan, specification, or report was prepared by me or under my direct supervision and that I am a duly Licensed Professional Engineer under the laws of the state of Minnesota.</p> <p>Signature: </p> <p>Typed or Printed Name: <u>WAYNE S. MOORE</u></p> <p>Date: <u>10/15/19</u> License Number: <u>54715</u></p>	
			
		<p>I HAVE RESEARCHED THIS CHAPTER AND THE LOUISIANA STATE UNIFORM CONSTRUCTION CODE AND TO THE BEST OF MY KNOWLEDGE AND BELIEF, THESE DRAWINGS ARE IN COMPLIANCE THEREWITH. I TAKE FULL RESPONSIBILITY FOR THE CONTENTS OF THESE PLANS.</p>	
	<p>Professional Certification</p> <p>I hereby certify that these documents were prepared or approved by me, and that I am a duly licensed professional engineer under the laws of the State of Maryland, License No. 49744, Expiration Date <u>6/8/20</u></p>		
<p>MOORE AND ASSOCIATES ENGINEERING AND CONSULTING, INC.</p> <p><small>THIS DOCUMENT IS THE PROPERTY OF MOORE AND ASSOCIATES ENGINEERING AND CONSULTING. THE UNAUTHORIZED REPRODUCTION, COPYING, OR OTHERWISE USE OF THIS DOCUMENT IS STRICTLY PROHIBITED AND ANY INFRINGEMENT THEREUPON MAY BE SUBJECT TO LEGAL ACTION.</small></p>		<p>DRAWN BY: AST</p> <p>CHECKED BY: PDH</p> <p>PROJECT MGR: WSH</p> <p>CLIENT: COAST TO COAST</p>	<p>COAST TO COAST CARPORTS, INC. 22525 I-40 KNOXVILLE, ARKANSAS 72845 30'-0"x20'-0" ENCLOSED STRUCTURE</p> <p>07/09/2020 12:48:54 PM WSS/ 1152635 9214S/19302S shelley CONSTRUCTION</p> <p>DATE: 10-15-19 SCALE: NTS SHT. 1A DWG. NO.: SK-19-03</p>

DRAWING INDEX

SHEET 1	PE SEAL COVER SHEET (1 OF 2)
SHEET 1A	PE SEAL COVER SHEET (2 OF 2)
SHEET 2	DRAWING INDEX
SHEET 3	INSTALLATION NOTES AND SPECIFICATIONS
SHEET 4	TYPICAL SIDE AND END ELEVATIONS
SHEET 5	TYPICAL RAFTER/COLUMN END AND SIDE FRAMING SECTIONS (BOX EAVE RAFTER) EXPOSURE B
SHEET 5A	TYPICAL RAFTER/COLUMN END AND SIDE FRAMING SECTION (BOX EAVE RAFTER) EXPOSURE B
SHEET 5B	TYPICAL RAFTER/COLUMN END AND SIDE FRAMING SECTION (BOX EAVE RAFTER) EXPOSURE B
SHEET 5C	TYPICAL RAFTER/COLUMN END AND SIDE FRAMING SECTION (BOX EAVE RAFTER) EXPOSURE C
SHEET 5D	TYPICAL RAFTER/COLUMN END FRAMING SECTION (BOX EAVE RAFTER) EXPOSURE C
SHEET 5E	TYPICAL RAFTER/COLUMN END FRAMING SECTION (BOX EAVE RAFTER) EXPOSURE C
SHEET 6	RAFTER/COLUMN CONNECTION DETAILS (BOX EAVE RAFTER) EXPOSURE B LACED COLUMN OPTION
SHEET 6A	RAFTER/COLUMN CONNECTION DETAILS (BOX EAVE RAFTER) EXPOSURE B LACED COLUMN OPTION
SHEET 6B	RAFTER/COLUMN CONNECTION DETAILS (BOX EAVE RAFTER) EXPOSURE B
SHEET 6C	RAFTER/COLUMN CONNECTION DETAILS (BOX EAVE RAFTER) EXPOSURE C LACED COLUMN OPTION
SHEET 6D	RAFTER/COLUMN CONNECTION DETAILS (BOX EAVE RAFTER) EXPOSURE C LACED COLUMN OPTION
SHEET 6E	RAFTER/COLUMN CONNECTION DETAILS (BOX EAVE RAFTER) EXPOSURE C
SHEET 7	TYPICAL RAFTER/COLUMN END AND SIDE FRAMING SECTION (BOW RAFTER) EXPOSURE B
SHEET 7A	TYPICAL RAFTER/COLUMN END AND SIDE FRAMING SECTION (BOW RAFTER) EXPOSURE B
SHEET 7B	TYPICAL RAFTER/COLUMN END AND SIDE FRAMING SECTION (BOW RAFTER) EXPOSURE B
SHEET 7C	TYPICAL RAFTER/COLUMN END FRAMING SECTION (BOW RAFTER) EXPOSURE C
SHEET 8	RAFTER/COLUMN CONNECTION DETAILS (BOW RAFTER) EXPOSURE B
SHEET 8A	RAFTER/COLUMN CONNECTION DETAILS (BOW RAFTER) EXPOSURE C
SHEET 9	OPTIONAL BASE RAIL ANCHORAGE
SHEET 10	TYPICAL END WALL AND SIDE WALL FRAMING SECTIONS (BOX EAVE RAFTER)
SHEET 11	TYPICAL END WALL AND SIDE WALL FRAMING SECTIONS (BOW RAFTER)
SHEET 12	CONNECTION DETAILS
SHEET 13	CONNECTION DETAILS
SHEET 14	LEAN-TO OPTIONS (BOX EAVE RAFTER)
SHEET 15	LEAN-TO OPTIONS (BOW RAFTER)
SHEET 16	VERTICAL ROOF/SIDING OPTION

**MOORE AND ASSOCIATES
ENGINEERING AND CONSULTING, INC.**

DRAWN BY: AST

CHECKED BY: PDH

PROJECT MGR: WSM

CLIENT: COAST TO COAST

COAST TO COAST CARPORTS, INC.
22525 I-40
KNOXVILLE, ARKANSAS 72845
30'-0"x20'-0" ENCLOSED STRUCTURE

DATE: 10-15-19

SHT. 2

SCALE: NTS

DWG. NO: SI

3

THIS DOCUMENT IS THE PROPERTY OF MOORE AND ASSOCIATES ENGINEERING AND CONSULTING. THE UNAUTHORIZED REPRODUCTION, COPYING, OR OTHERWISE USE OF THIS DOCUMENT IS STRICTLY PROHIBITED AND ANY INFRINGEMENT THEREUPON MAY BE SUBJECT TO LEGAL ACTION.

07/09/2020 12:48:54 PM
1182855/1214S/19302S
shelley
CONSTRUCTION

INSTALLATION NOTES AND SPECIFICATIONS

- 1 DESIGN IS FOR MAXIMUM 30'-0" WIDE x 20'-0" EAVE HEIGHT ENCLOSED STRUCTURES.
- 2 DESIGN WAS DONE IN ACCORDANCE WITH THE 2018 NORTH CAROLINA BUILDING CODE, 2006 INTERNATIONAL BUILDING CODE (IBC), 2009 IBC, 2012 IBC, 2015 IBC AND 2018 IBC.
- 3 DESIGN LOADS ARE AS FOLLOWS:
 - A) DEAD LOAD = 1.5 PSF
 - B) LIVE LOAD = 12 PSF
 - C) GROUND SNOW LOAD = 30 PSF (< 24'-0") WITH U-CHANNEL RAFTER TIE
 = 35 PSF (< 30'-0") WITH WELDED RAFTER TIE
 = 65 PSF (< 30'-0") WITH WELDED RAFTER TIE @ 4'-0" O.C. SPACING, USING TS 2 1/4"x2 1/4"-12 GA.
- 4 UNBALANCED SNOW LOADS DUE TO DRIFTING HAS NOT BEEN ANALYZED.
- 5 LOW ULTIMATE WIND SPEED (LW) 105 TO 140 MPH (NOMINAL WIND SPEED 81 TO 109 MPH): MAXIMUM RAFTER/POST AND END POST SPACING = 50 FEET
- 6 END WALL POSTS ARE EQUIVALENT TO SIDE WALL POSTS UNLESS NOTED OTHERWISE.
- 7 HAZARD RISK CATEGORY I.
- 8 WIND EXPOSURE CATEGORY B OR C.
- 9 SPECIFICATIONS APPLICABLE TO 29 GAUGE METAL PANELS FASTENED DIRECTLY TO 2 1/2"x2 1/2"-14 GAUGE TUBE STEEL (TS) FRAMING MEMBERS (UNLESS NOTED OTHERWISE).
- 10 AVERAGE FASTENER SPACING ON-CENTERS ALONG RAFTERS OR HAT CHANNELS, AND COLUMNS (INTERIOR OR END) = 8' O.C. (MAX). LW.
- 11 FASTENERS CONSIST OF #12-14x3/4" SELF-DRILLING FASTENER (SDF), USE CONTROL SEAL WASHER WITH EXTERIOR FASTENERS. SPECIFICATIONS APPLICABLE ONLY FOR MEAN ROOF HEIGHT OF 20 FEET OR LESS, AND ROOF SLOPES OF 14' (3:12 PITCH) OR LESS SPACING REQUIREMENTS FOR OTHER ROOF HEIGHTS AND/OR SLOPES MAY VARY.
- 12 ANCHORS SHALL BE INSTALLED THROUGH BASE RAIL WITHIN 6" OF EACH RAFTER COLUMN ALONG SIDES.
- 13 STANDARD GROUND ANCHORS (SOIL NAILS) CONSIST OF #4 REBAR W/ WELDED NUT x 30' LONG AND MAY BE USED IN SUITABLE SOIL CONDITIONS. OPTIONAL ANCHORAGE MAY BE USED IN SUITABLE SOILS AND MUST BE USED IN UNSUITABLE SOILS AS NOTED.
- 14 WIND FORCES GOVERN OVER SEISMIC FORCES. SEISMIC PARAMETERS ANALYZED ARE:
 SOIL SITE CLASS = D
 RISK CATEGORY I/II/III
 R= 3.25 I_E= 1.0
 S_{DS}= 2039 g V= C_SW
 S_{DI}= 1258 g

**MOORE AND ASSOCIATES
ENGINEERING AND CONSULTING, INC.**

DRAWN BY: AST

CHECKED BY: PDH

PROJECT MGR: WSM

CLIENT: COAST TO COAST

COAST TO COAST CARPORTS, INC.
22525 I-40
KNOXVILLE, ARKANSAS 72845
30'-0"x20'-0" ENCLOSED STRUCTURE

DATE: 10-15-19

SHT. 3

SCALE: NTS

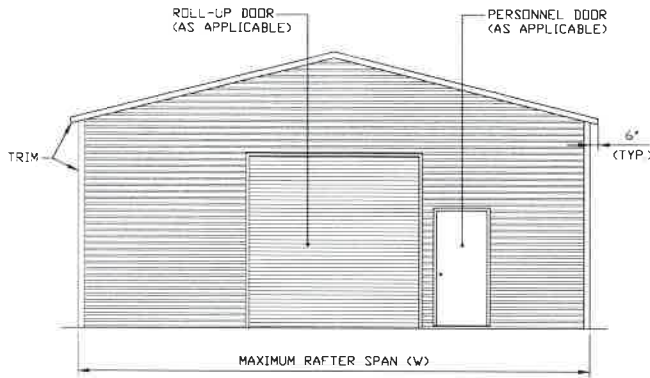
DWG. NO: SK-3

REV: 3

THIS DOCUMENT IS THE PROPERTY OF MOORE AND ASSOCIATES ENGINEERING AND CONSULTING. THE UNAUTHORIZED REPRODUCTION, COPYING, OR OTHERWISE USE OF THIS DOCUMENT IS STRICTLY PROHIBITED AND ANY INFRINGEMENT THEREUPON MAY BE SUBJECT TO LEGAL ACTION.

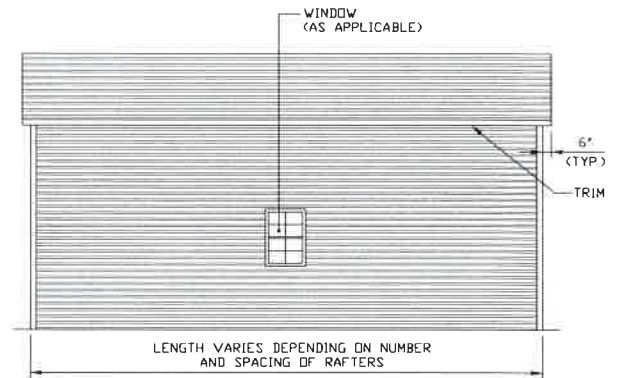
07/09/2020 13:48:54 JTW/MS/
182635 19214S/19302S
shelley
CONSTRUCTION

BOX EAVE FRAME RAFTER STRUCTURE (Sheets 5, 5A, 5B, 5C, 5D, 5E, 6, 6A, 6B, 6C, 6D, 6E, 9, 10, 12, 13, 14 AND 16)



TYPICAL END ELEVATION

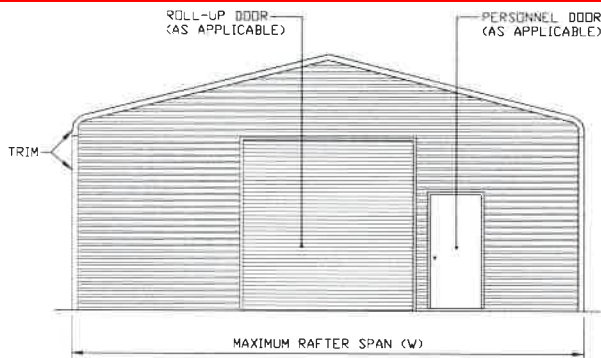
SCALE: NTS



TYPICAL SIDE ELEVATION

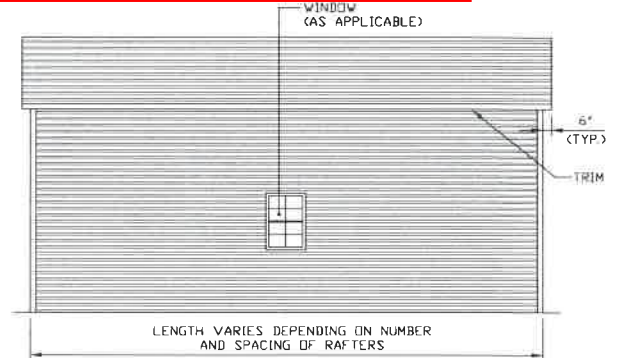
SCALE: NTS

BOW FRAME RAFTER STRUCTURE (Sheets 7, 7A, 7B, 7C, 8, 8A, 9, 11, 12, 13 AND 15)



TYPICAL END ELEVATION

SCALE: NTS



TYPICAL SIDE ELEVATION

SCALE: NTS

**MOORE AND ASSOCIATES
ENGINEERING AND CONSULTING, INC.**

DRAWN BY: AST

CHECKED BY: PDH

PROJECT MGR: WSM

CLIENT: COAST TO COAST

COAST TO COAST CARPORTS, INC.
22525 I-40
KNOXVILLE, ARKANSAS 72845
30'-0" x 20'-0" ENCLOSED STRUCTURE

DATE: 10-15-19

SHT. 4

SCALE: NTS

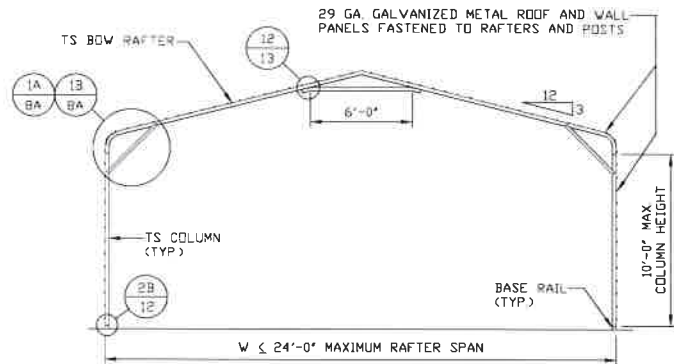
DWG. NO. SK-1182855-19214S/19302S

REV. 3

THIS DOCUMENT IS THE PROPERTY OF MOORE AND ASSOCIATES ENGINEERING AND CONSULTING. THE UNAUTHORIZED REPRODUCTION, COPYING, OR OTHERWISE USE OF THIS DOCUMENT IS STRICTLY PROHIBITED AND ANY INFRINGEMENT THEREUPON MAY BE SUBJECT TO LEGAL ACTION.

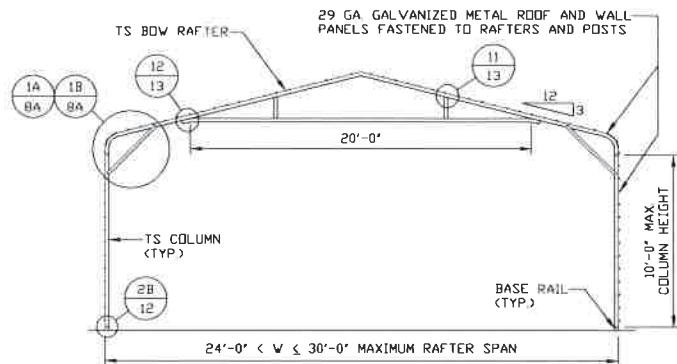
07/09/2020 10:54 PM
Released for Permit
shelley
CONSTRUCTION

EXPOSURE C



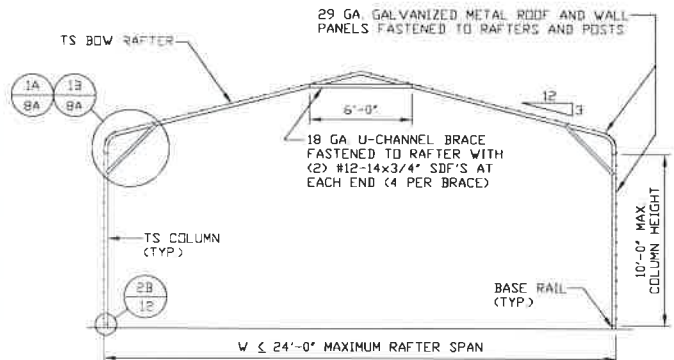
TYPICAL RAFTER/COLUMN END FRAME SECTION

SCALE: NTS



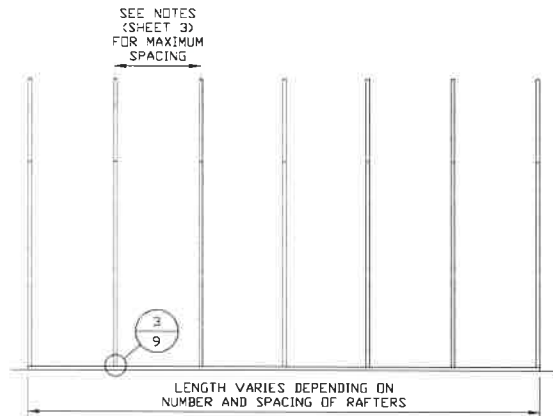
TYPICAL RAFTER/COLUMN END FRAME SECTION

SCALE: NTS



TYPICAL RAFTER/COLUMN END FRAME SECTION

SCALE: NTS



TYPICAL RAFTER/COLUMN SIDE FRAMING SECTION

SCALE: NTS

**MOORE AND ASSOCIATES
ENGINEERING AND CONSULTING, INC.**

DRAWN BY: AST

CHECKED BY: PDH

PROJECT MGR: WSH

CLIENT: COAST TO COAST

COAST TO COAST CARPORTS, INC.
22525 I-40
KNOXVILLE, ARKANSAS 72845
30'-0"x20'-0" ENCLOSED STRUCTURE

DATE: 10-13-19

SHT. 7C

SCALE: NTS

DWG. NO: SK-3

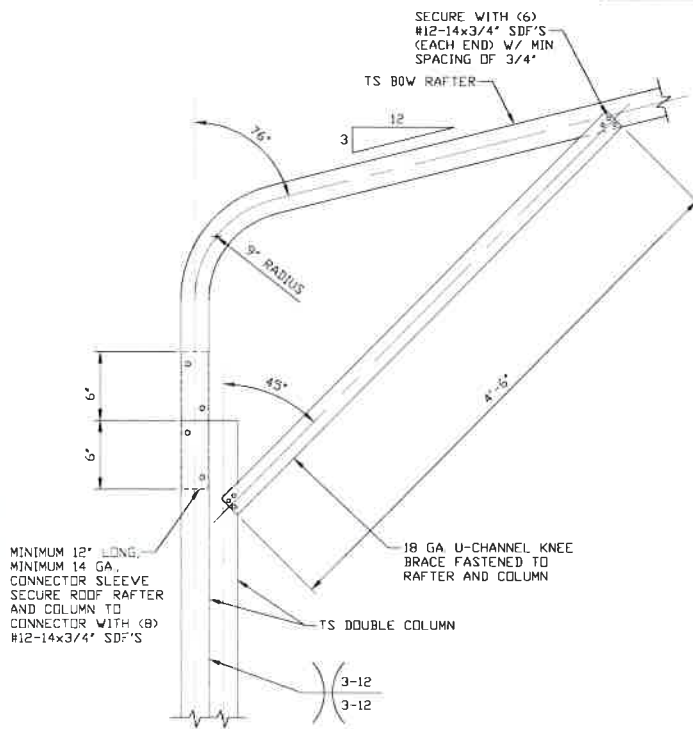
07/09/2020 10:48:54 AM

11/16/2019 12:14S/19302S

THIS DOCUMENT IS THE PROPERTY OF MOORE AND ASSOCIATES ENGINEERING AND CONSULTING. THE UNAUTHORIZED REPRODUCTION, COPYING, OR OTHERWISE USE OF THIS DOCUMENT IS STRICTLY PROHIBITED AND ANY INFRINGEMENT THEREUPON MAY BE SUBJECT TO LEGAL ACTION.

shelley CONSTRUCTION

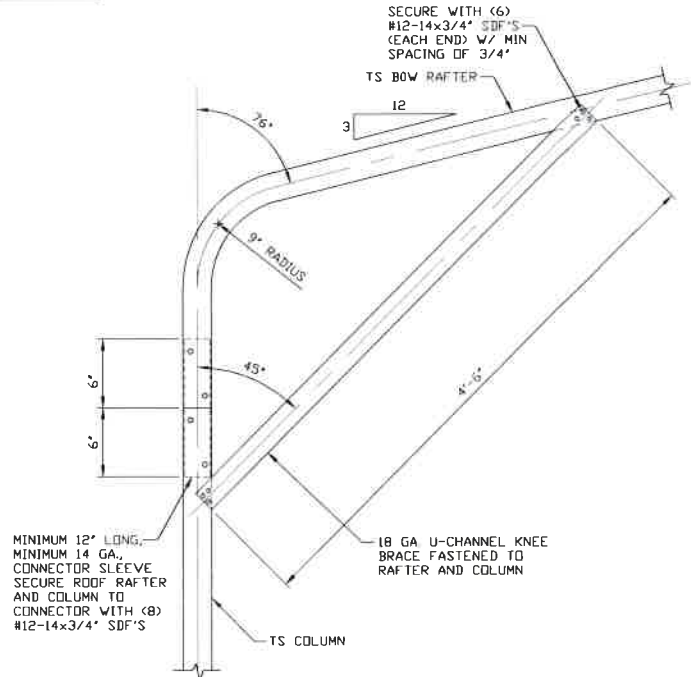
EXPOSURE C



BOX EAVE RAFTER COLUMN CONNECTION DETAIL FOR HEIGHTS 10'-0" < TO ≤ 14'-0"

1

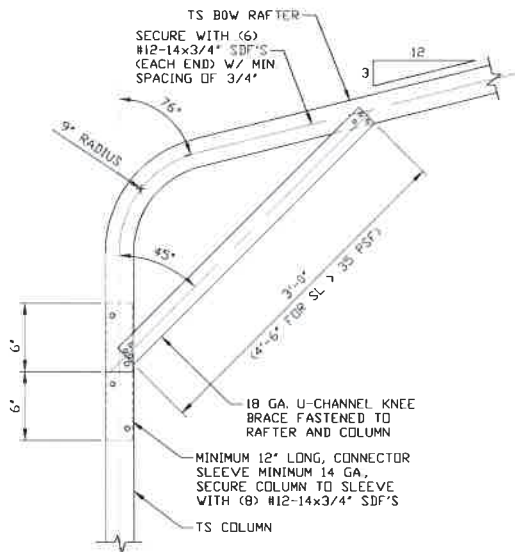
SCALE: NTS



BOX EAVE RAFTER COLUMN CONNECTION DETAIL FOR HEIGHTS 8'-0" < TO ≤ 10'-0"

1A

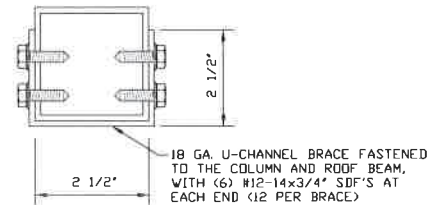
SCALE: NTS



BOX EAVE RAFTER COLUMN CONNECTION DETAIL FOR HEIGHTS ≤ 8'-0"

1B

SCALE: NTS



BRACE SECTION

SCALE: NTS

MOORE AND ASSOCIATES
ENGINEERING AND CONSULTING, INC.

DRAWN BY: AST

CHECKED BY: PDH

PROJECT MGR: WSM

CLIENT: COAST TO COAST

COAST TO COAST CARPORTS, INC.
22525 I-40

KNOXVILLE, ARKANSAS 72845

30'-0"x20'-0" ENCLOSURE

DATE: 10-15-19

SHT. 8A

SCALE: NTS

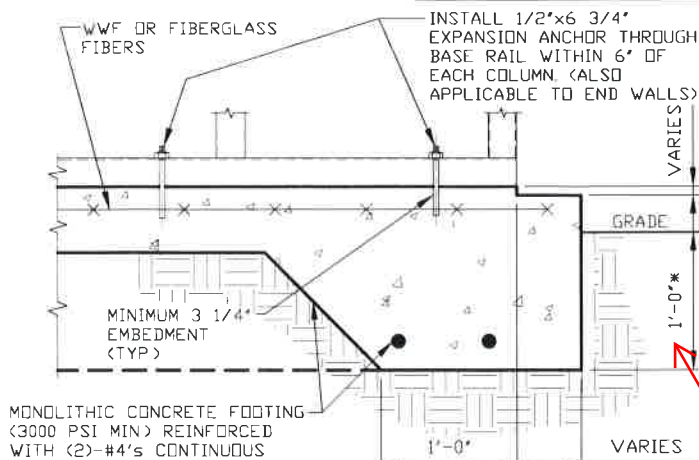
DWG. NO. SK-3

REV. 3

THIS DOCUMENT IS THE PROPERTY OF MOORE AND ASSOCIATES ENGINEERING AND CONSULTING. THE UNAUTHORIZED REPRODUCTION, COPYING, OR OTHERWISE USE OF THIS DOCUMENT IS STRICTLY PROHIBITED AND ANY INFRINGEMENT THEREUPON MAY BE SUBJECT TO LEGAL ACTION.

Released for Permit
17149S/
1902SS/19214S/19302S
CONSTRUCTION

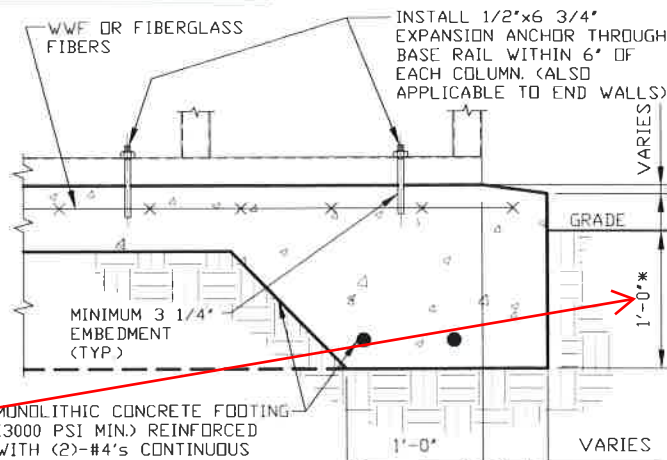
OPTIONAL BASE RAIL ANCHORAGE



3A

CONCRETE MONOLITHIC SLAB BASE RAIL ANCHORAGE

SCALE: NTS
(MINIMUM ANCHOR EDGE DISTANCE IS 4")
* COORDINATE WITH LOCAL CODES/ORD.



3B

CONCRETE MONOLITHIC SLAB BASE RAIL ANCHORAGE

SCALE: NTS
(MINIMUM ANCHOR EDGE DISTANCE IS 4")
* COORDINATE WITH LOCAL CODES/ORD.

GENERAL NOTES

NOTE: CONCRETE MONOLITHIC SLAB DESIGN BASED ON MINIMUM SOIL BEARING CAPACITY OF 1,500 PSF.

CONCRETE:

CONCRETE SHALL HAVE A MINIMUM SPECIFIED COMPRESSIVE STRENGTH OF 3,000 PSI AT 28 DAYS.

COVER OVER REINFORCING STEEL:

FOR FOUNDATIONS, MINIMUM CONCRETE COVER OVER REINFORCING BARS SHALL BE PER ACI-318:

3" IN FOUNDATIONS WHERE THE CONCRETE IS CAST AGAINST AND PERMANENTLY IN CONTACT WITH THE EARTH OR EXPOSED TO THE EARTH OR WEATHER, AND 1 1/2" ELSEWHERE.

REINFORCING STEEL:

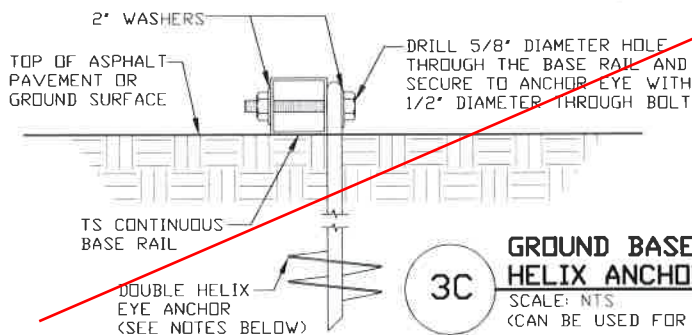
THE TURNDOWN REINFORCING STEEL SHALL BE ASTM A615 GRADE 60. THE SLAB REINFORCEMENT SHALL BE WELDED WIRE FABRIC MEETING ASTM A185 OR FIBERGLASS FIBER REINFORCEMENT.

REINFORCEMENT MAY BE BENT IN THE SHOP OR THE FIELD PROVIDED:

1. REINFORCEMENT IS BENT COLD.
2. THE DIAMETER OF THE BEND, MEASURED ON THE INSIDE OF THE BAR, IS NOT LESS THAN SIX-BAR DIAMETERS.
3. REINFORCEMENT PARTIALLY EMBEDDED IN CONCRETE SHALL NOT BE FIELD BENT.

HELIX ANCHOR NOTES:

1. FOR VERY DENSE AND/OR CEMENTED SANDS, COARSE GRAVEL AND COBBLES, CALICHE, PRELOADED SILTS AND CLAYS, USE MINIMUM (2) 4" HELICES WITH MINIMUM 30" EMBEDMENT OR SINGLE 6" HELIX WITH MINIMUM 50" EMBEDMENT.
2. FOR CORAL USE MINIMUM (2) 4" HELICES WITH MINIMUM 30" EMBEDMENT OR SINGLE 6" HELIX WITH MINIMUM 50" EMBEDMENT.
3. FOR MEDIUM DENSE COARSE SANDS, SANDY GRAVELS, VERY STIFF SILTS, AND CLAYS USE MINIMUM (2) 4" HELICES WITH MINIMUM 30 INCH EMBEDMENT OR SINGLE 6" HELIX WITH MINIMUM 50" EMBEDMENT.
4. FOR LOOSE TO MEDIUM DENSE SANDS, FIRM TO STIFF CLAYS AND SILTS ALLUVIAL FILL, USE MINIMUM (2) 6" HELICES WITH MINIMUM 50" EMBEDMENT.
5. FOR VERY LOOSE TO MEDIUM DENSE SANDS, FIRM TO STIFFER CLAYS AND SILTS, ALLUVIAL FILL, USE MINIMUM (2) 8" HELICES WITH MINIMUM 50" EMBEDMENT.



3C

GROUND BASE HELIX ANCHORAGE

SCALE: NTS
(CAN BE USED FOR ASPHALT)

Helix not allowed

**SOILS REPORT AND FOUNDATION DESIGN
BY LICENSED COLORADO ENGINEER OR
ARCHITECT SHALL BE ON HAND
AT TIME OF FIRST INSPECTION.**

**MOORE AND ASSOCIATES
ENGINEERING AND CONSULTING, INC.**

DRAWN BY: AST

CHECKED BY: PDH

PROJECT MGR: WSM

CLIENT: COAST TO COAST

COAST TO COAST CARPORTS, INC.
22525 I-40

KNOXVILLE, ARKANSAS 77845

30'-0" x 20'-0" ENCLOSURE

DATE: 10-15-19

SHT. 9

SCALE: NTS

DWG. NO. SK-3

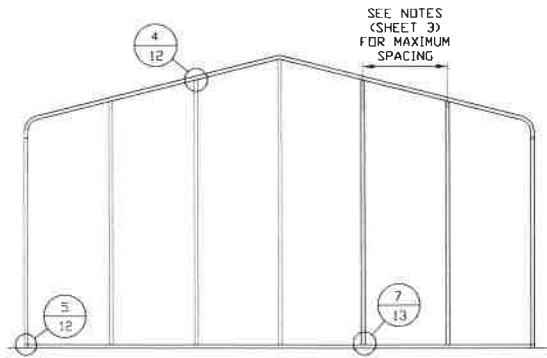
REV. 3

THIS DOCUMENT IS THE PROPERTY OF MOORE AND ASSOCIATES ENGINEERING AND CONSULTING. THE UNAUTHORIZED REPRODUCTION, COPYING, OR OTHERWISE USE OF THIS DOCUMENT IS STRICTLY PROHIBITED AND ANY INFRINGEMENT THEREUPON MAY BE SUBJECT TO LEGAL ACTION.

JOB NO. 17149S/
19214S/19302S
shelley

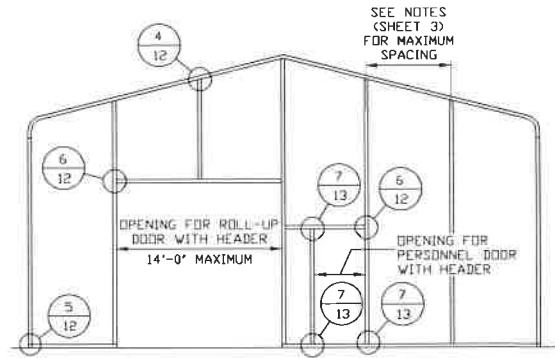
CONSTRUCTION

BOW RAFTER END WALL AND SIDE WALL OPENINGS



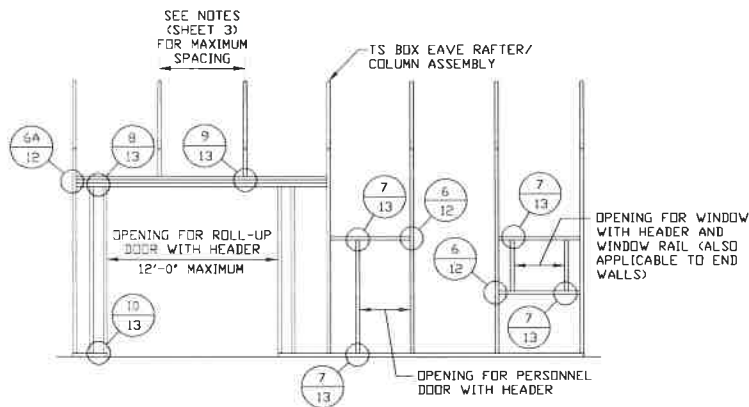
TYPICAL BOW RAFTER END WALL FRAMING SECTION

SCALE: NTS



TYPICAL BOW RAFTER END WALL OPENINGS FRAMING SECTION

SCALE: NTS



TYPICAL BOW RAFTER SIDE WALL OPENINGS FRAMING SECTION

SCALE: NTS

**MOORE AND ASSOCIATES
ENGINEERING AND CONSULTING, INC.**

DRAWN BY: AST

CHECKED BY: PDH

PROJECT MGR: WSM

CLIENT: COAST TO COAST

COAST TO COAST CARPORTS, INC.
22525 I-40

KNOXVILLE, ARKANSAS 72845
Released for Permit
30'-0"x20'-0" ENCLOSURE

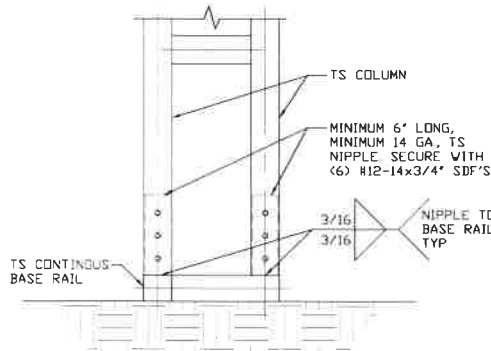
DATE: 10-15-19
SCALE: NTS

DWG. NO: SK-3
REV: 3

THIS DOCUMENT IS THE PROPERTY OF MOORE AND ASSOCIATES ENGINEERING AND CONSULTING. THE UNAUTHORIZED REPRODUCTION, COPYING, OR OTHERWISE USE OF THIS DOCUMENT IS STRICTLY PROHIBITED AND ANY INFRINGEMENT THEREUPON MAY BE SUBJECT TO LEGAL ACTION.

JTS NO: 17149S/
19214S/19302S
CONSTRUCTION

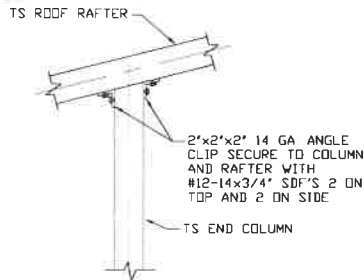
CONNECTION DETAILS



2

COLUMN/BASE RAIL CONNECTION DETAIL

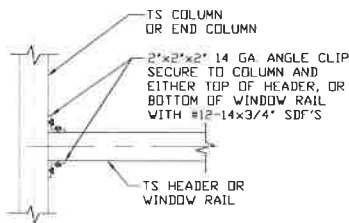
SCALE: NTS



4

END COLUMN/RAFTER CONNECTION DETAIL

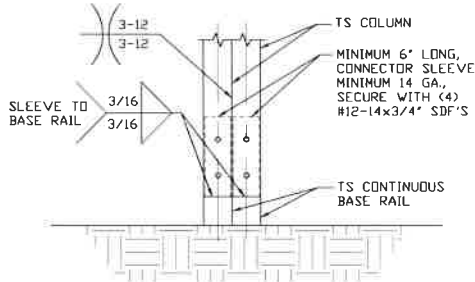
SCALE: NTS



6

COLUMN OR WINDOW RAIL TO POST CONNECTION DETAIL

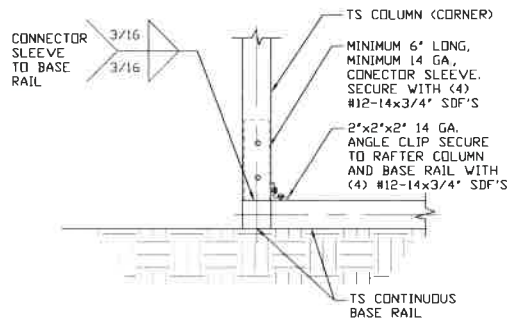
SCALE: NTS



2A

COLUMN/BASE RAIL CONNECTION DETAIL

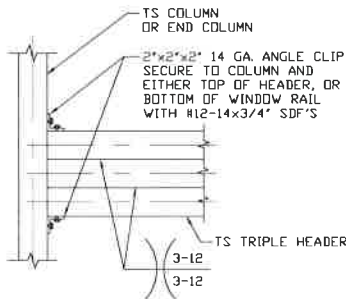
SCALE: NTS



5

END COLUMN/BASE RAIL CONNECTION DETAIL

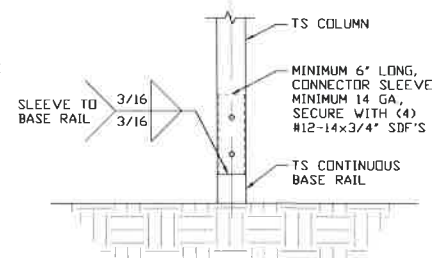
SCALE: NTS



6A

COLUMN OR WINDOW RAIL TO POST CONNECTION DETAIL

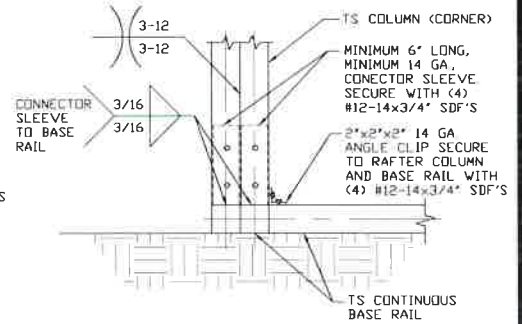
SCALE: NTS



2B

COLUMN/BASE RAIL CONNECTION DETAIL

SCALE: NTS



5A

END COLUMN/BASE RAIL CONNECTION DETAIL

SCALE: NTS

MOORE AND ASSOCIATES
ENGINEERING AND CONSULTING, INC.

DRAWN BY: AST

CHECKED BY: PDH

PROJECT MGR: WSM

CLIENT: COAST TO COAST

COAST TO COAST CARPORTS, INC.
22525 I-40

KNOXVILLE, ARKANSAS 77845

30'-0"x20'-0" ENCLOSURE

17/09/2020 2:48:54 PM

DATE: 10-15-19

SCALE: NTS

DWG. NO SK-3

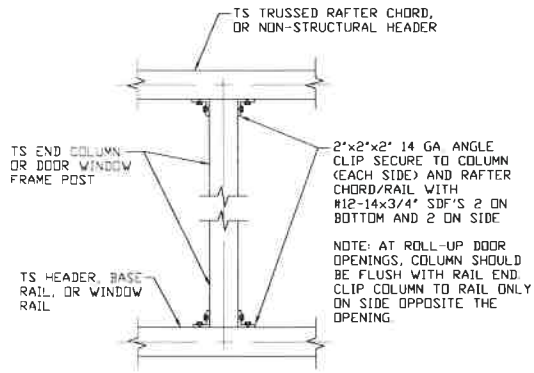
REV: 3

JOB NO: 17149S/
19214S/19302S

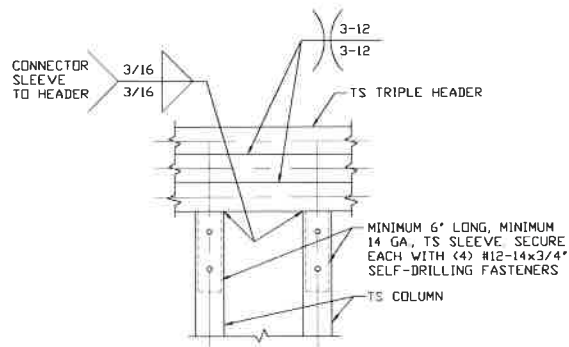
CONSTRUCTION

THIS DOCUMENT IS THE PROPERTY OF MOORE AND ASSOCIATES ENGINEERING AND CONSULTING. THE UNAUTHORIZED REPRODUCTION, COPYING, OR OTHERWISE USE OF THIS DOCUMENT IS STRICTLY PROHIBITED AND ANY INFRINGEMENT THEREUPON MAY BE SUBJECT TO LEGAL ACTION.

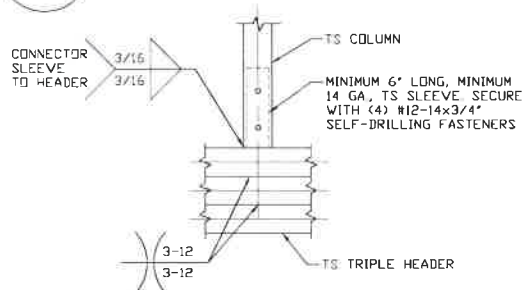
CONNECTION DETAILS



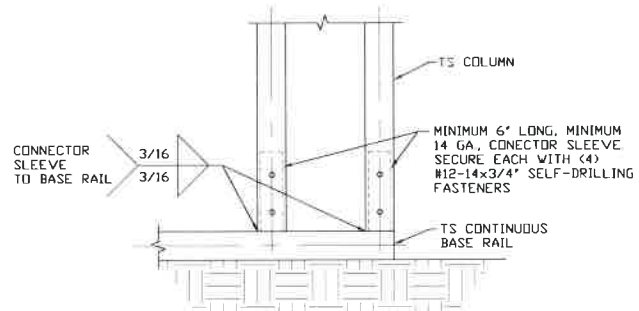
7 COLUMN TO HEADER, BASE RAIL OR WINDOW RAIL CONNECTION DETAIL
SCALE: NTS



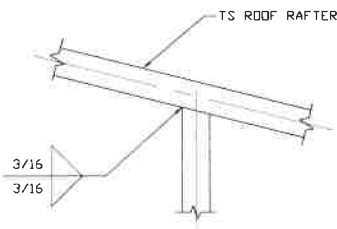
8 TRIPLE HEADER/COLUMN CONNECTION DETAIL
SCALE: NTS



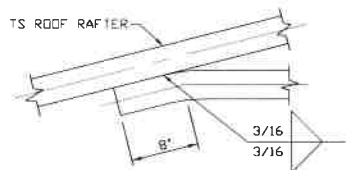
9 COLUMN/TRIPLE HEADER CONNECTION DETAIL
SCALE: NTS



10 COLUMN/BASE RAIL CONNECTION DETAIL
SCALE: NTS



11 RAFTER TO CHORD CONNECTION DETAIL
SCALE: NTS



12 COLLAR TIE CONNECTION DETAIL
SCALE: NTS

MOORE AND ASSOCIATES
ENGINEERING AND CONSULTING, INC.

DRAWN BY: AST

CHECKED BY: PDH

PROJECT MGR: WSM

CLIENT: COAST TO COAST

COAST TO COAST CARPORTS, INC.
22525 I-40

KNOXVILLE, ARKANSAS 77845

30'-0"x20'-0" ENCLOSURE

DATE: 10-15-19 SCALE: NTS

DWG. NO SK-3

REV: 3

THIS DOCUMENT IS THE PROPERTY OF MOORE AND ASSOCIATES ENGINEERING AND CONSULTING. THE UNAUTHORIZED REPRODUCTION, COPYING, OR OTHERWISE USE OF THIS DOCUMENT IS STRICTLY PROHIBITED AND ANY INFRINGEMENT THEREUPON MAY BE SUBJECT TO LEGAL ACTION.