

IMAGE 1



IMAGE 2



IMAGE 3



IMAGE 4



IMAGE 5



IMAGE 6



IMAGE 7



IMAGE 8



IMAGE 9



IMAGE 10



IMAGE 11



IMAGE 12



IMAGE 13

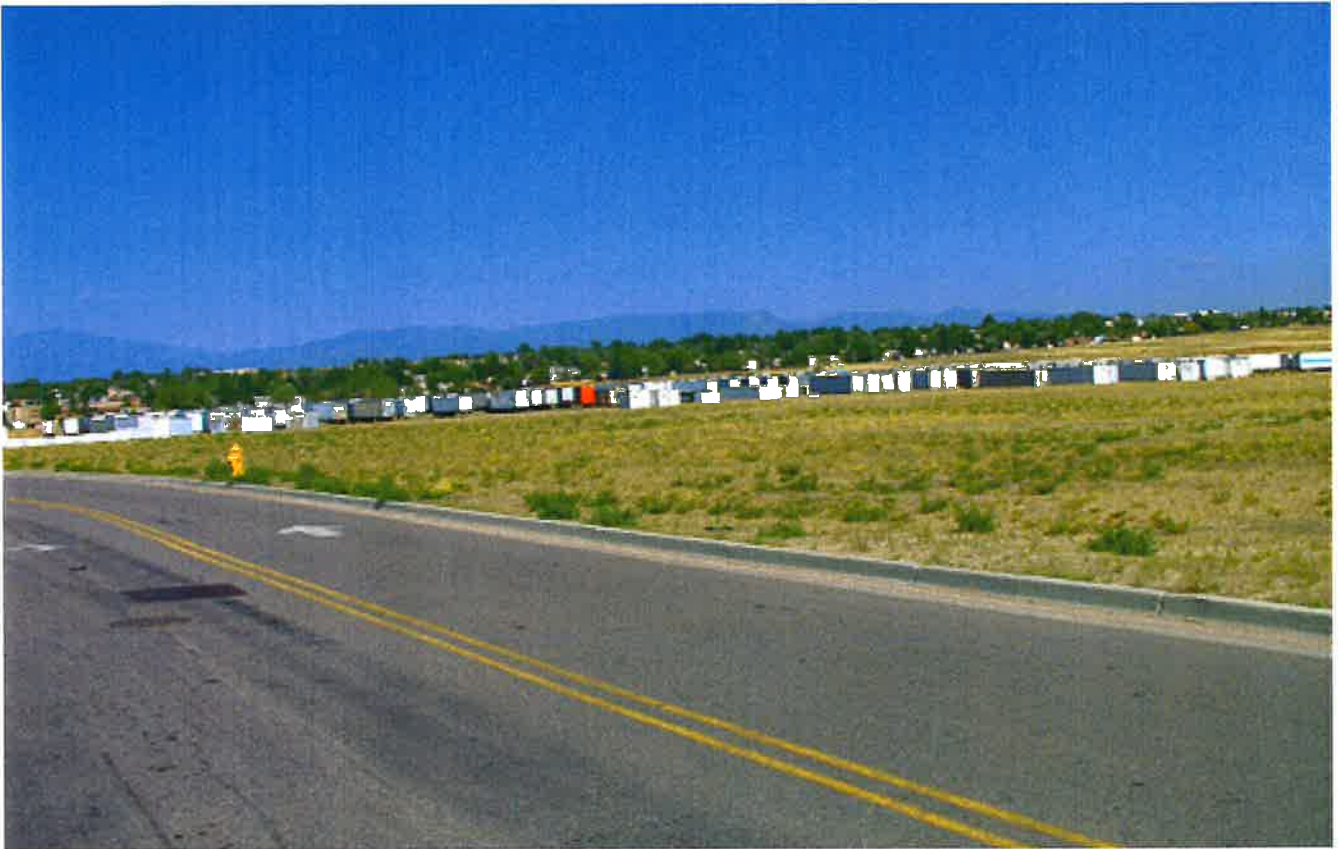


IMAGE 14



IMAGE 15



IMAGE 16

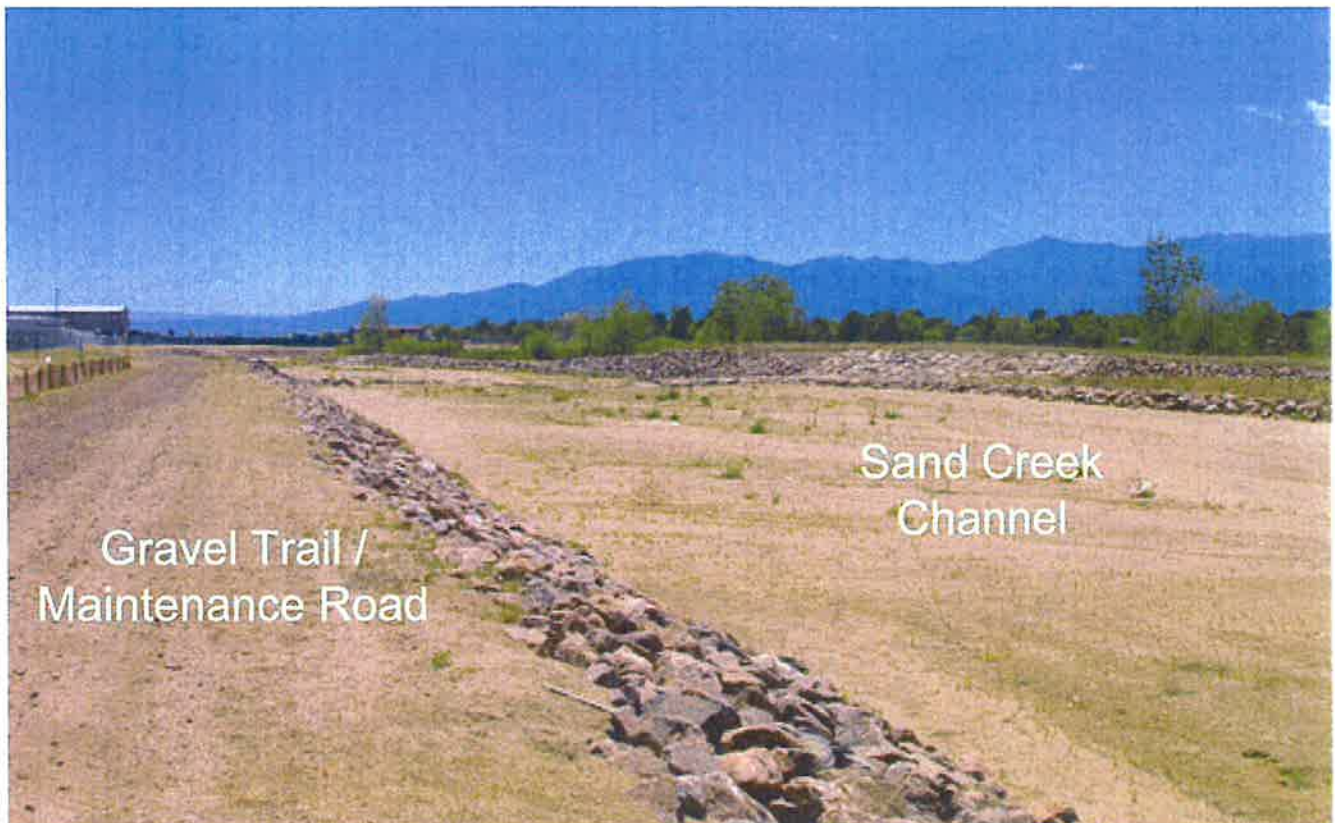


IMAGE 17



Sand Creek
Channel

Gravel Trail /
Maintenance Road

IMAGE 18

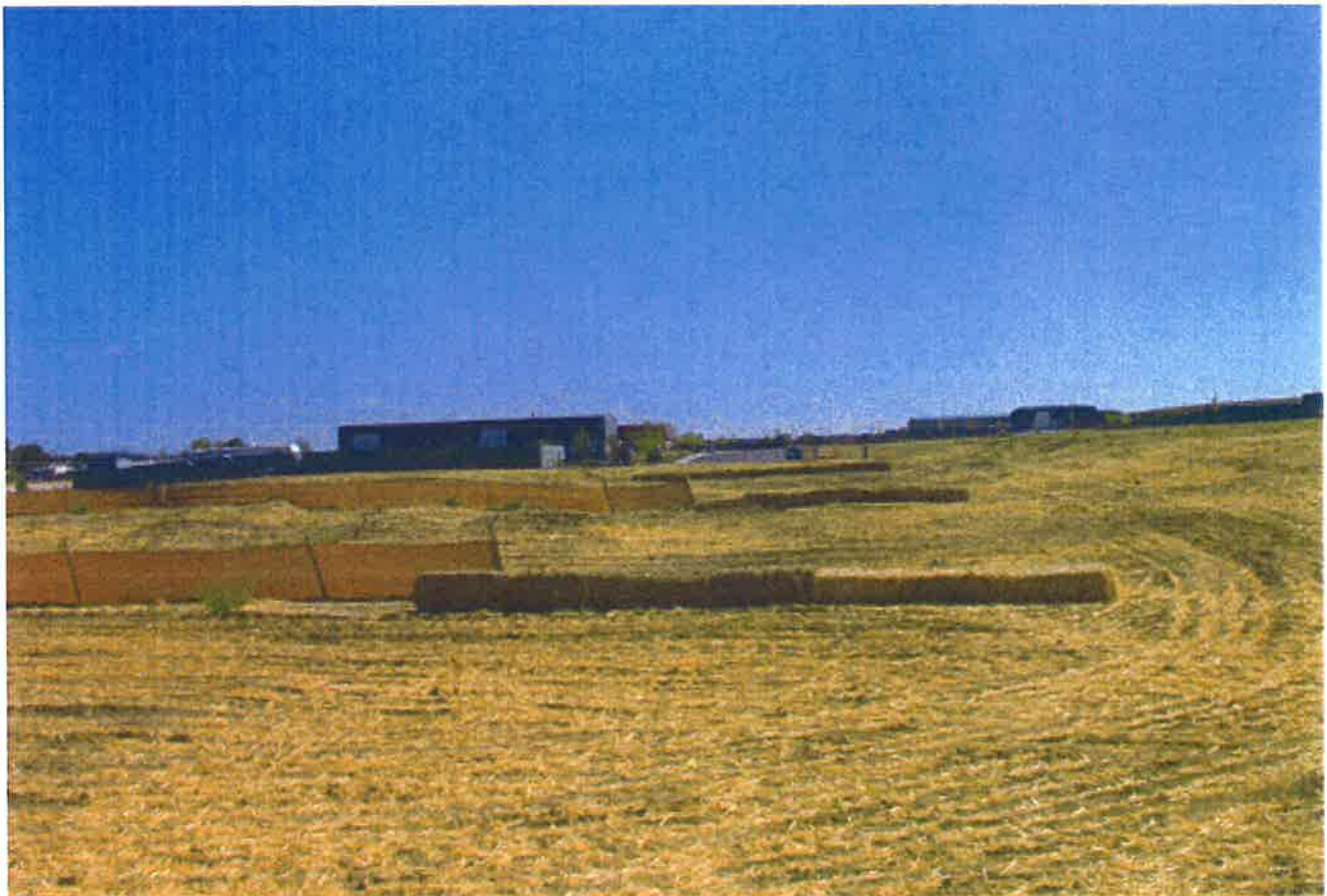


IMAGE 19



IMAGE 20

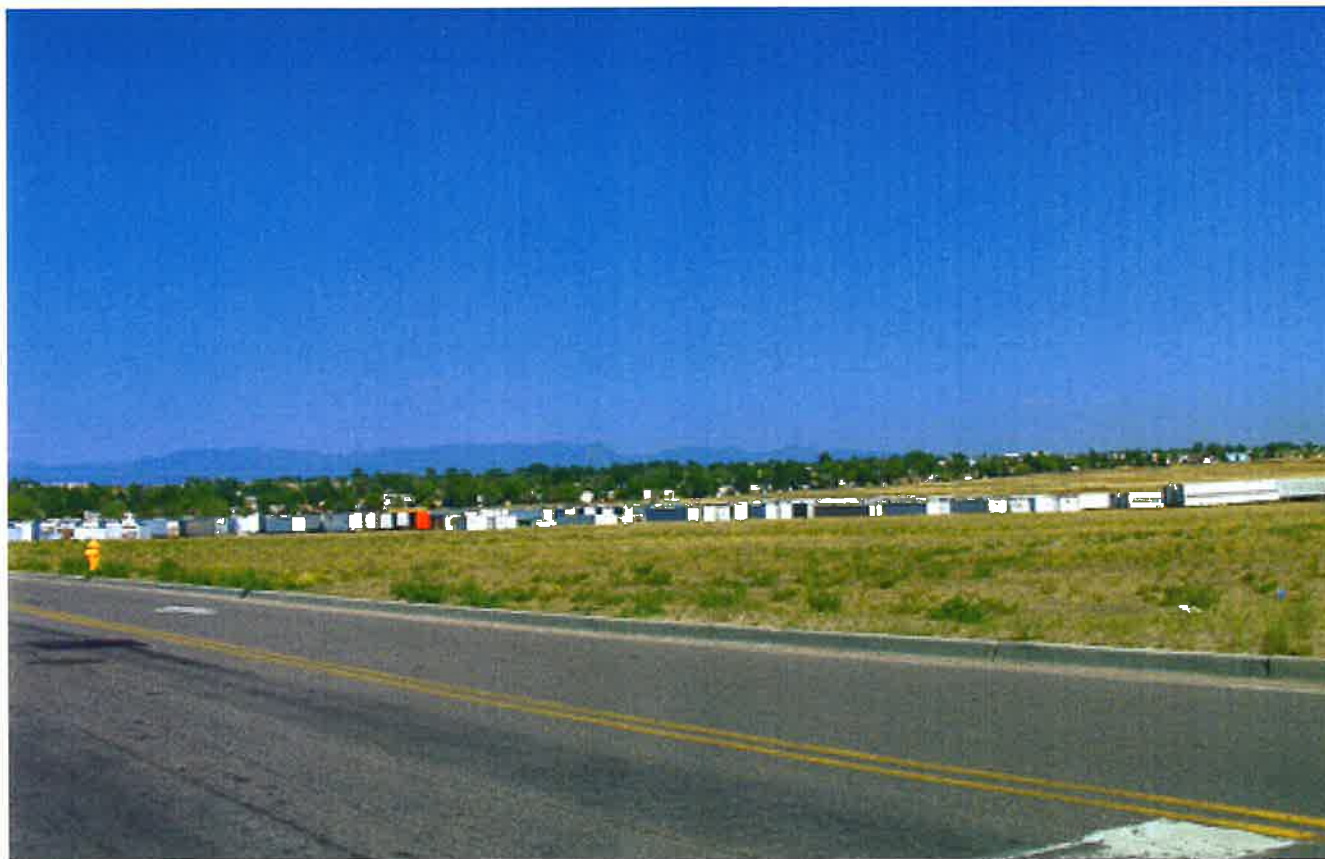


IMAGE 21



IMAGE 22



IMAGE 23



IMAGE 24



IMAGE 25



IMAGE 26



IMAGE 27



IMAGE 28



IMAGE 29



IMAGE 30

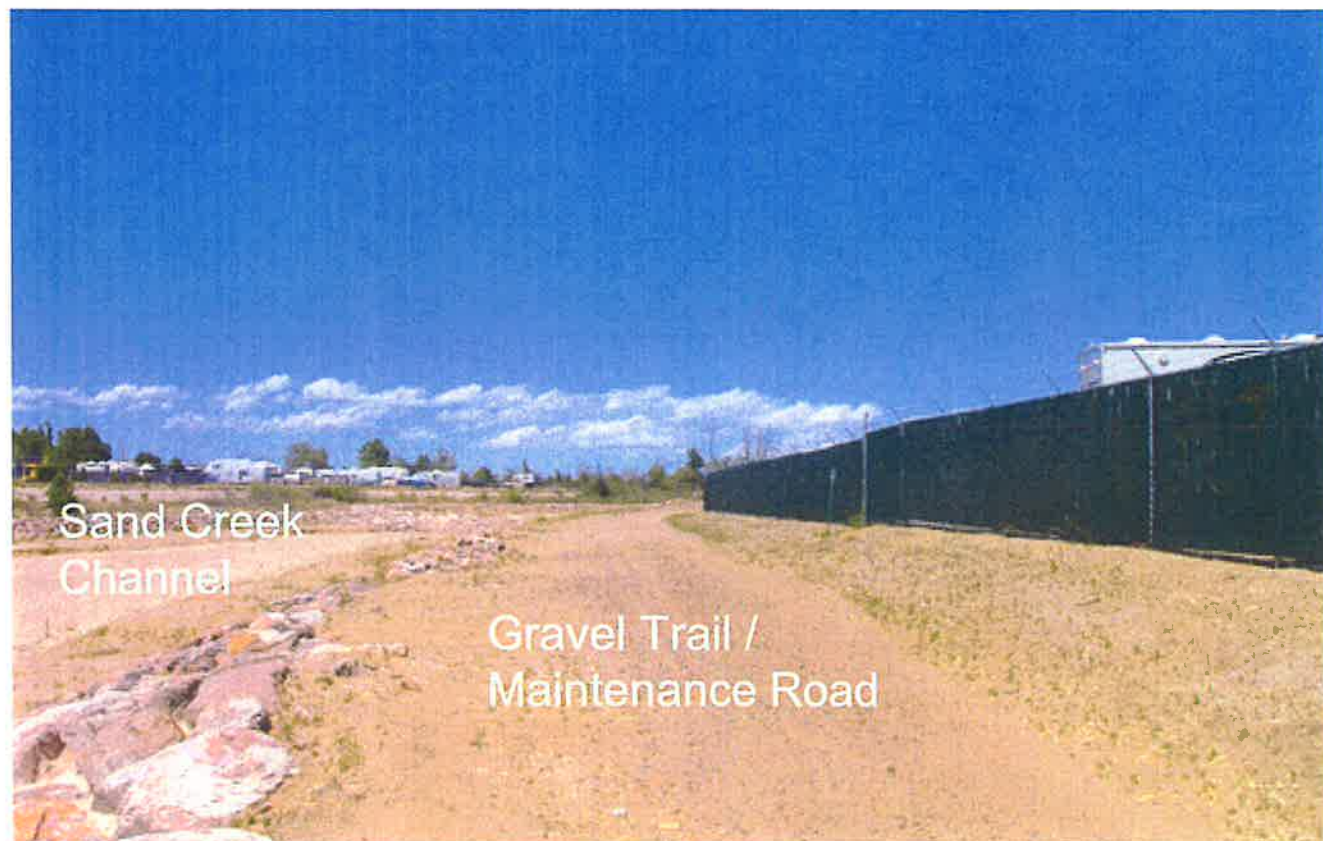


IMAGE 31



IMAGE 32



IMAGE 33



IMAGE 34



REVENUE 1010-11-12-13

Connection: REEDED 2, Installed STRAW Bales 3 SEEDS



Correction: ReGraded & Installed Straw Bales & Seeded



REPAIRED SILVER FENCE
REGRADED & SEED



KEITH'S NO. 10

SEWER LINE WAS BACKFILL ON 11/17/06

AND EXCAVATION IN SEWER WATER LINES IN FUTURE WILL BE CONDUCTED BY STONIS INC. IN THE FUTURE



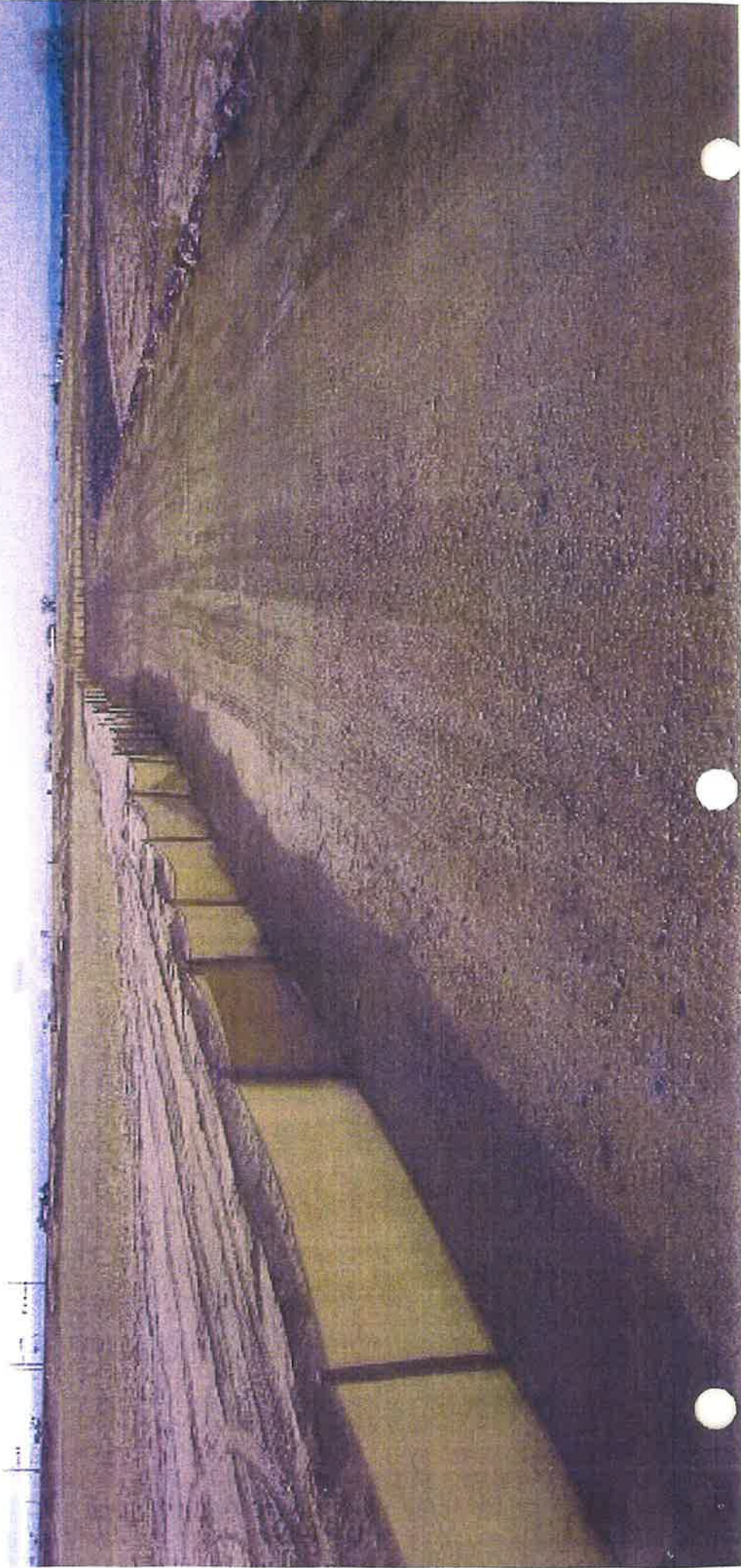
REPAIRS PHOTO 2-2-9

REPAIRED SILT FENCE ADDED STRAW BALES
RELEASED ACCESS ROAD ALONG CHANNEL



REFERENCE PHOTO # 2-8-7

REPAIRED SILT FENCE
Graded disturbed areas & RESEED



KEENCE PHOTO 4-5-6-1

REPAIRED SILT FENCE

GRADED ACCESS ROAD ALONG CHANNEL

SEEDED TOP OF RIP-RAP ALONG CHANNEL

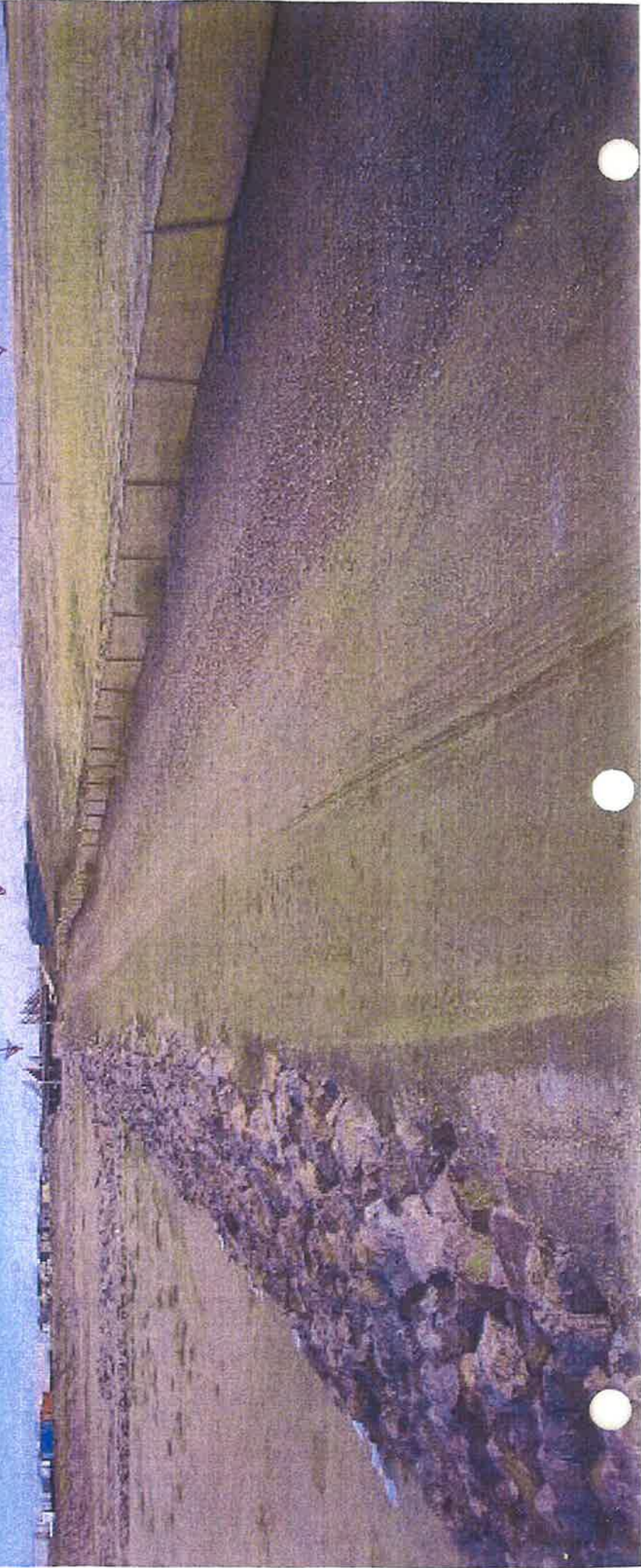


Order of Property was contacted and Corrections were made.
Hammers Construction does not own this property

EROSION REPAIRED & RESEDED

Installed Silt Fence

Seed & Mulch on Disturbed Area



100% Force Repair = Added Stress Bales
All Disturbed Areas have been RESEED



REVIEW THE WORK TO BE DONE

SILT FENCE REPAIRED & ADDED STRENGTH
ALL DISTURBED AREAS HAVE BEEN RESEDED



Site Photographs

Photograph date: 11/16/2006

Claremont Development, Inc.
Claremont Business Park
El Paso County, Colorado



Photograph 17

Photo 17 is 18 Apr 2006 10



Photograph 18

Site 1000000000 on 10/16/06
of 10/16/06

Site Photographs

Photograph date: 11/16/2006

Claremont Development, Inc.
Claremont Business Park
El Paso County, Colorado



Photograph 1



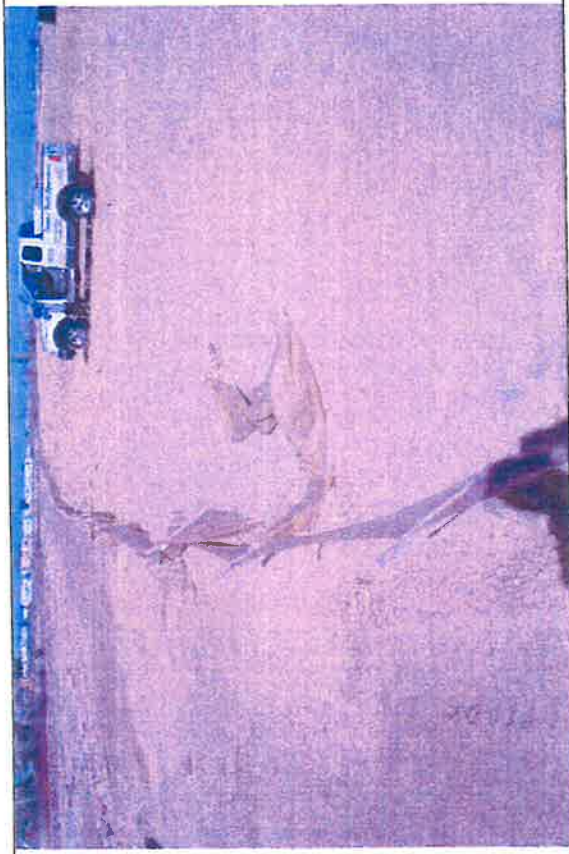
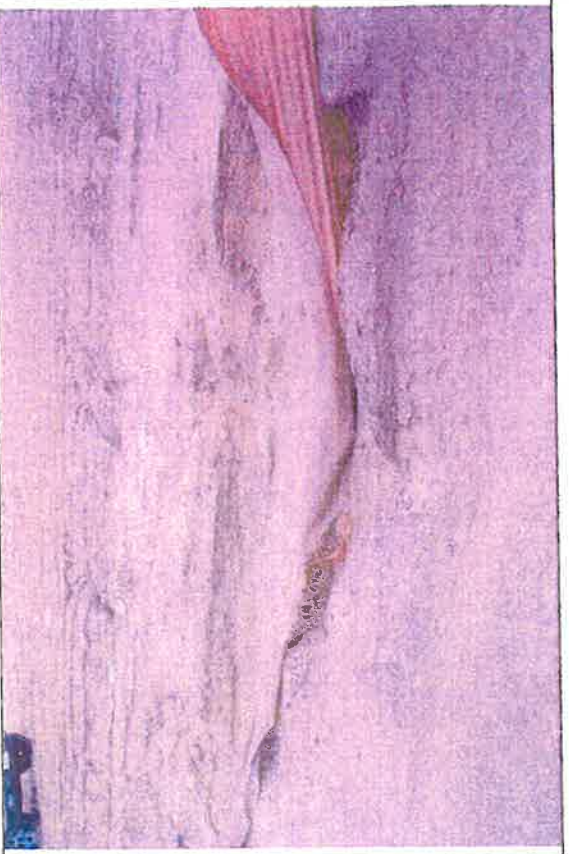


Photograph 2



Photograph 3



Photograph 4

Site Photographs	Claremont Development, Inc. Claremont Business Park El Paso County, Colorado	Photograph date: 11/16/2006
		Photograph 6
		Photograph 8

Site Photographs

Photograph date: 11/16/2006

Claremont Development, Inc.
Claremont Business Park
El Paso County, Colorado



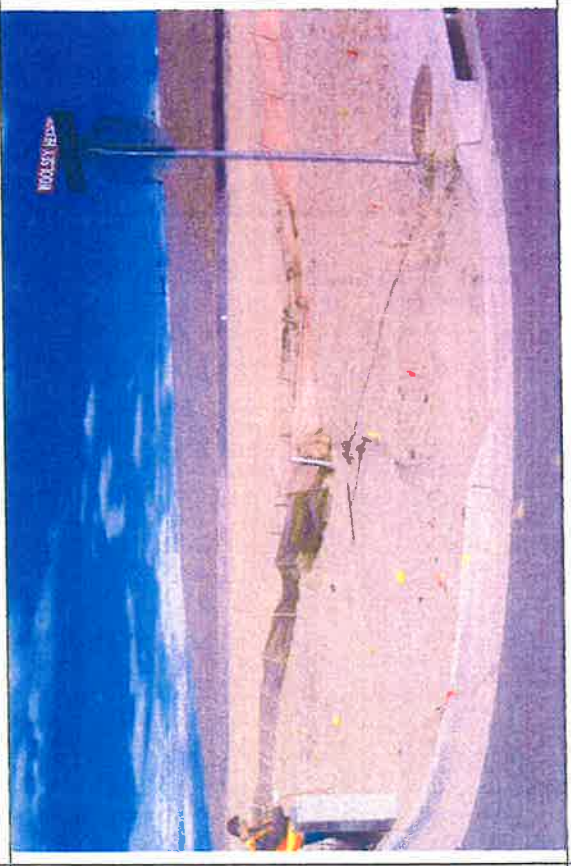
Photograph 9



Photograph 10



Photograph 11



Photograph 12

Site Photographs

Photograph date: 11/16/2006

Claremont Development, Inc.
Claremont Business Park
El Paso County, Colorado



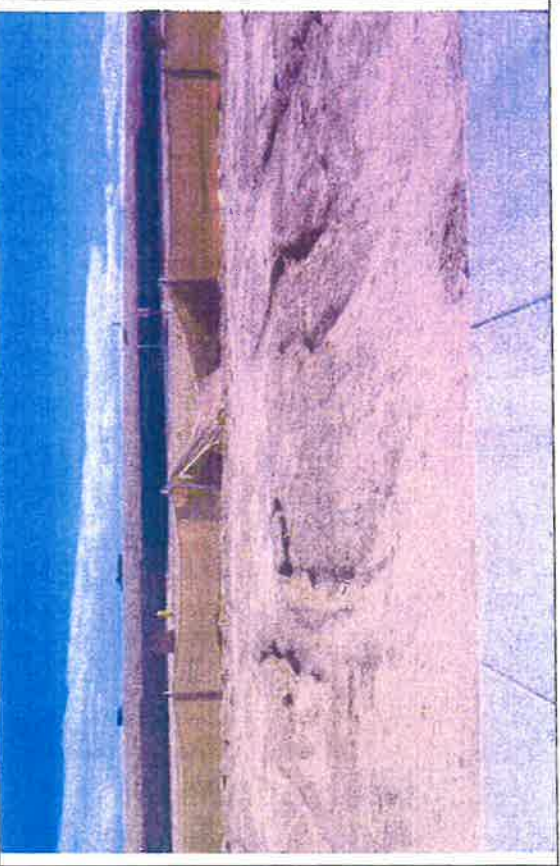
Photograph 13



Photograph 14



Photograph 15

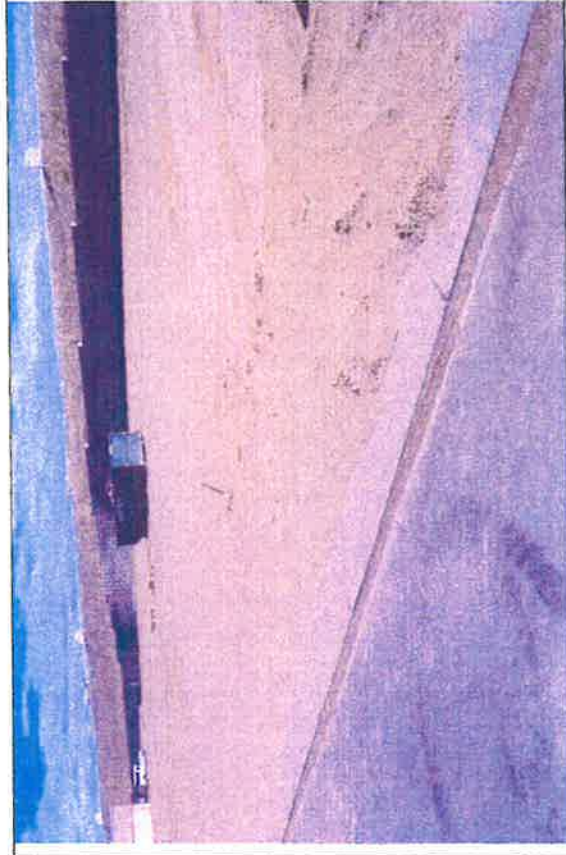


Photograph 16

Site Photographs

Photograph date: 11/16/2006

Claremont Development, Inc.
Claremont Business Park
El Paso County, Colorado



Photograph 17



Photograph 18