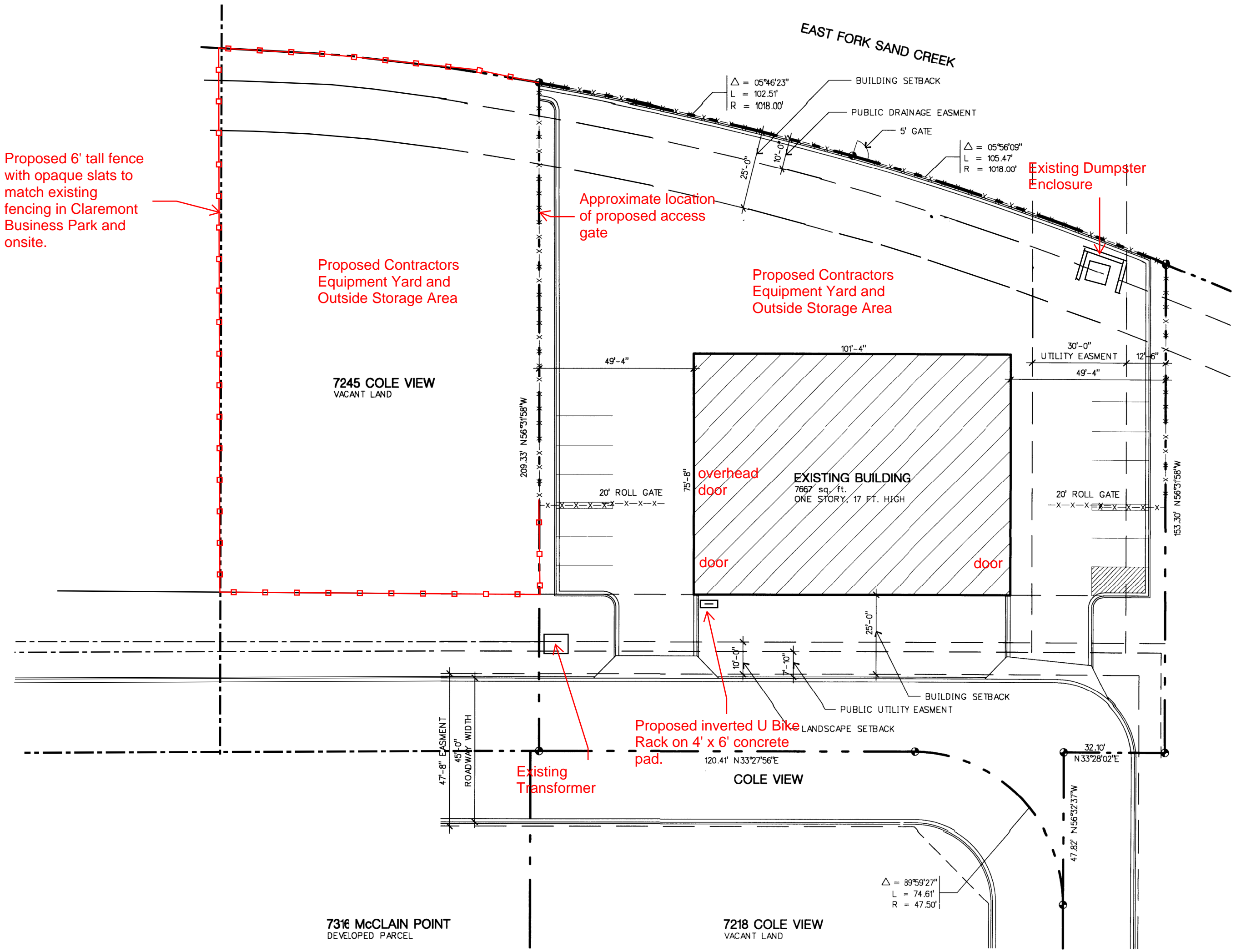


A-1 Chipseal Special Use Exhibit and Site Plan

7231 Cole View
7245 Cole View

1095 WESTERN DRIVE
MOBILE HOME PARK

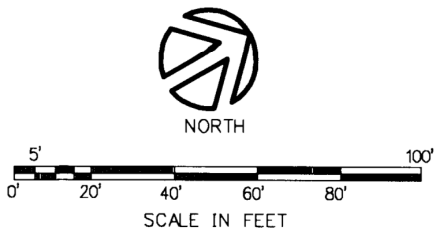


Existing Parking: 10 spaces
Proposed Parking: 10 spaces
Existing HC Parking: 1 van accessible space
Proposed HC Parking: 1 van accessible space
Existing Bike Parking: 0
Proposed Bike Parking: 1 Rack

7189 COLE VIEW
DEVELOPED PARCEL

EXISTING SITE PLAN

SCALE: 1" = 20'







Approved
By: Lindsay Darden
Date: 11/30/2020
El Paso County Planning & Community Development

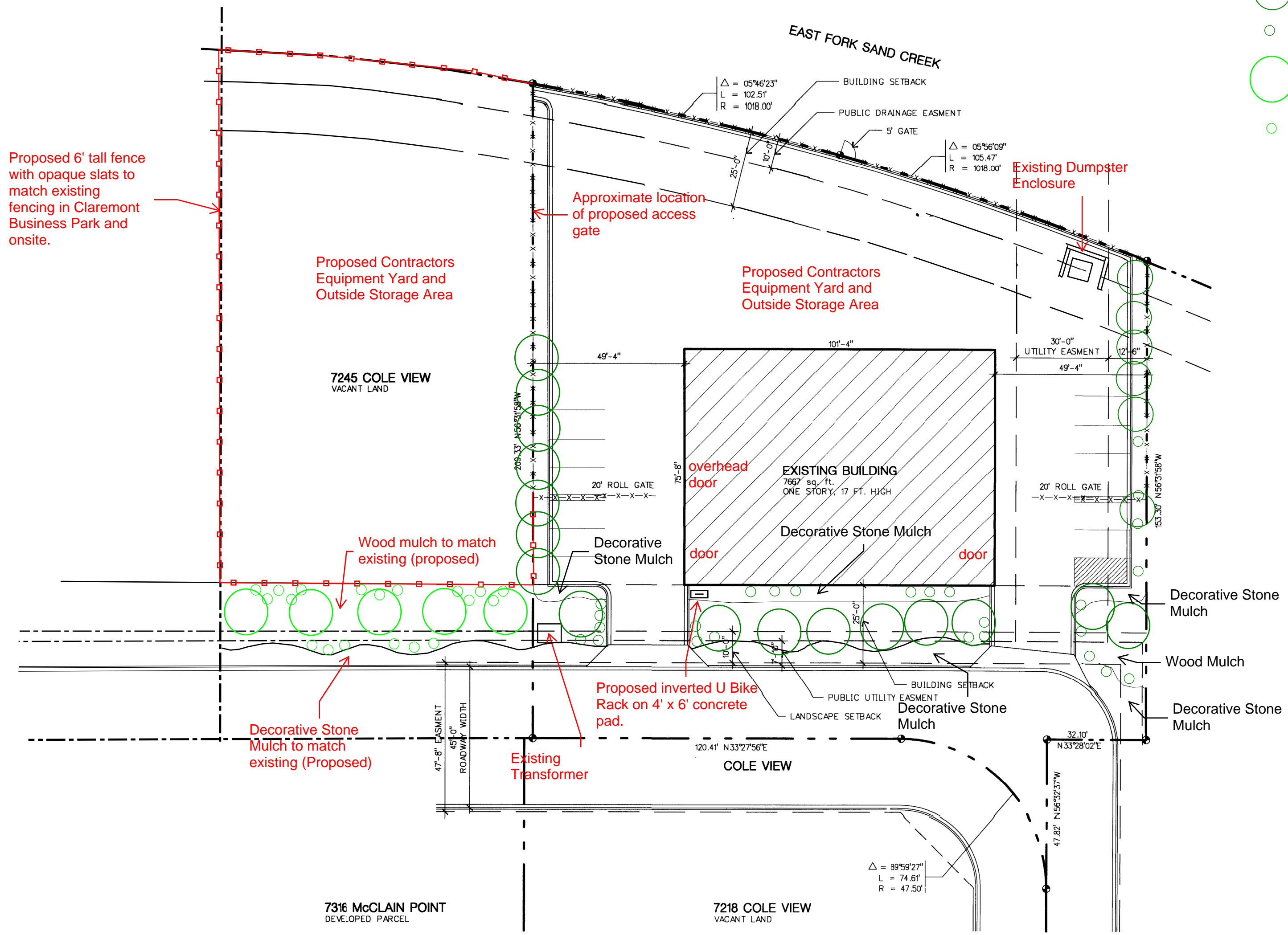


A-1 Chipseal Landscape Plan

7231 Cole View
7245 Cole View

1095 WESTERN DRIVE
MOBILE HOME PARK

-  Existing Tree
-  Existing Shrub
-  5 - Proposed Trees - Select from the existing tree species planted in front of 7231 Cole View
Minimum size at time of planting - 1.5" caliper B&B
-  19 - Proposed Shrubs - Select from the existing shrub species planted in front of 7231 Cole View
Minimum size at time of planting - 5 Gallon Container

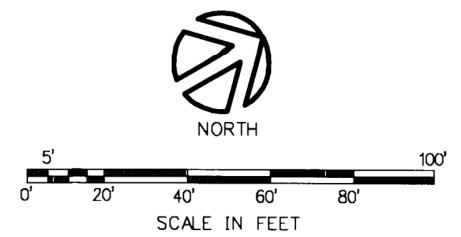


Existing Parking: 10 spaces
Proposed Parking: 10 spaces
Existing HC Parking: 1 van accessible space
Proposed HC Parking: 1 van accessible space
Existing Bike Parking: 0
Proposed Bike Parking: 1 Rack

7189 COLE VIEW
DEVELOPED PARCEL

EXISTING SITE PLAN

SCALE: 1" = 20'



Approved
By: Lindsay Darden
Date: 11/30/2020
El Paso County Planning & Community Development

