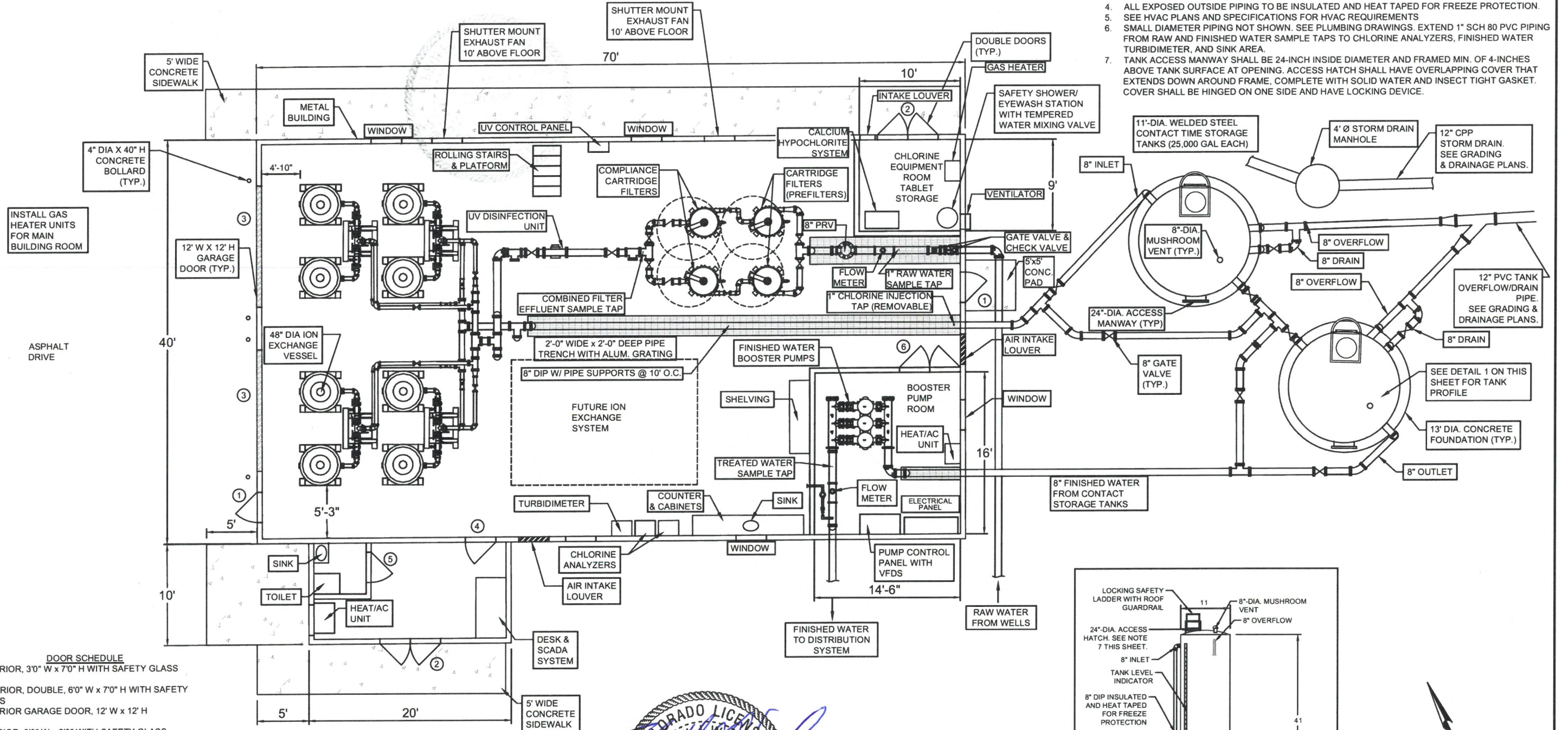


STRATMOOR HILLS WATER DISTRICT - CENTRALIZED WATER TREATMENT

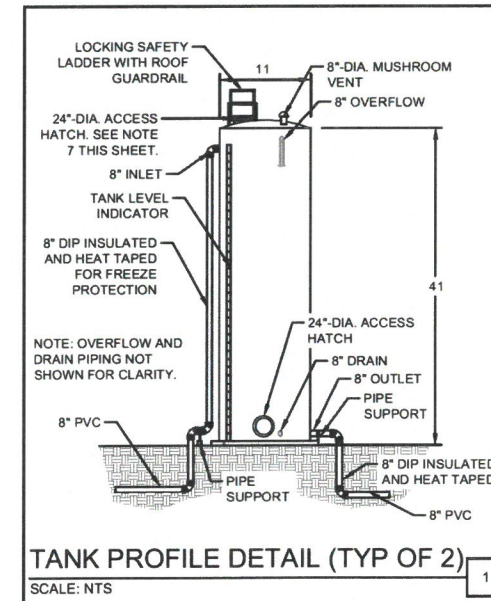
SITE DEVELOPMENT PLANS
LOT 2, GLENARM SUBDIVISION FILING NO. 2

NOTES:

- SEE SITE PLANS FOR SIDEWALKS, DRIVEWAY, AND EXTERIOR DOOR STOODS.
- ALL INTERIOR PIPING 4" DIAMETER AND LARGER TO BE CL 350 FLANGED DUCTILE IRON PIPE. INTERIOR PIPING LESS THAN 4" DIAMETER TO BE SCH 80 PVC.
- ALL YARD PIPING TO BE DR14 C900 PVC PIPE, BURIED WITH 5' MIN. COVER OVER TOP OF PIPE. ALL FITTINGS TO BE DUCTILE IRON WITH RESTRAINED MECHANICAL JOINTS. INSTALL CONCRETE THRUST BLOCKS AT ALL BENDS.
- ALL EXPOSED OUTSIDE PIPING TO BE INSULATED AND HEAT TAPED FOR FREEZE PROTECTION.
- SEE HVAC PLANS AND SPECIFICATIONS FOR HVAC REQUIREMENTS
- SMALL DIAMETER PIPING NOT SHOWN. SEE PLUMBING DRAWINGS. EXTEND 1" SCH 80 PVC PIPING FROM RAW AND FINISHED WATER SAMPLE TAPS TO CHLORINE ANALYZERS, FINISHED WATER TURBIDIMETER, AND SINK AREA.
- TANK ACCESS MANWAY SHALL BE 24-INCH INSIDE DIAMETER AND FRAMED MIN. OF 4-INCHES ABOVE TANK SURFACE AT OPENING. ACCESS HATCH SHALL HAVE OVERLAPPING COVER THAT EXTENDS DOWN AROUND FRAME. COMPLETE WITH SOLID WATER AND INSECT TIGHT GASKET. COVER SHALL BE HINGED ON ONE SIDE AND HAVE LOCKING DEVICE.



- DOOR SCHEDULE**
- EXTERIOR, 3'0" W x 7'0" H WITH SAFETY GLASS
 - EXTERIOR, DOUBLE, 6'0" W x 7'0" H WITH SAFETY GLASS
 - EXTERIOR GARAGE DOOR, 12' W x 12' H
 - INTERIOR, 3'0" W x 6'8" WITH SAFETY GLASS
 - INTERIOR, 3'0" W x 6'8" H, SOLID
 - INTERIOR, DOUBLE, 6'0" W x 7'0" H WITH SAFETY GLASS
- WINDOW SCHEDULE**
ALL WINDOWS TO BE SINGLE-HUNG, 3'0" W x 5'0" H



NO.	REVISIONS	BY	DATE

DRAWN	S. CALE
DESIGNED	C. KOCH
APPROVED	M. WARESAK
QA	QA BY

ATTENTION
LINE IS 2 INCHES
AT FULL SIZE
(IF NOT 2" SCALE ACCORDINGLY)

STRATMOOR HILLS WATER DISTRICT

FORSGREN Associates Inc.
56 INVERNESS DRIVE EAST #112, ENGLEWOOD, CO 80112
PH: 720-214-5884

CENTRALIZED WATER TREATMENT		PROJECT NO: 04-18-0103
FLOOR PLAN		SHEET NO: 3
DATE: AUG, 2020	PAGE NO: 3 OF 4	

P:\Clients\Stratmoor Hills WSD\04-18-0103 - Centralized Treatment\CAD\SHEETS\Site Development Plans\Floor Plans\Floor Plan.dwg - 8/24/2020 3:15 PM