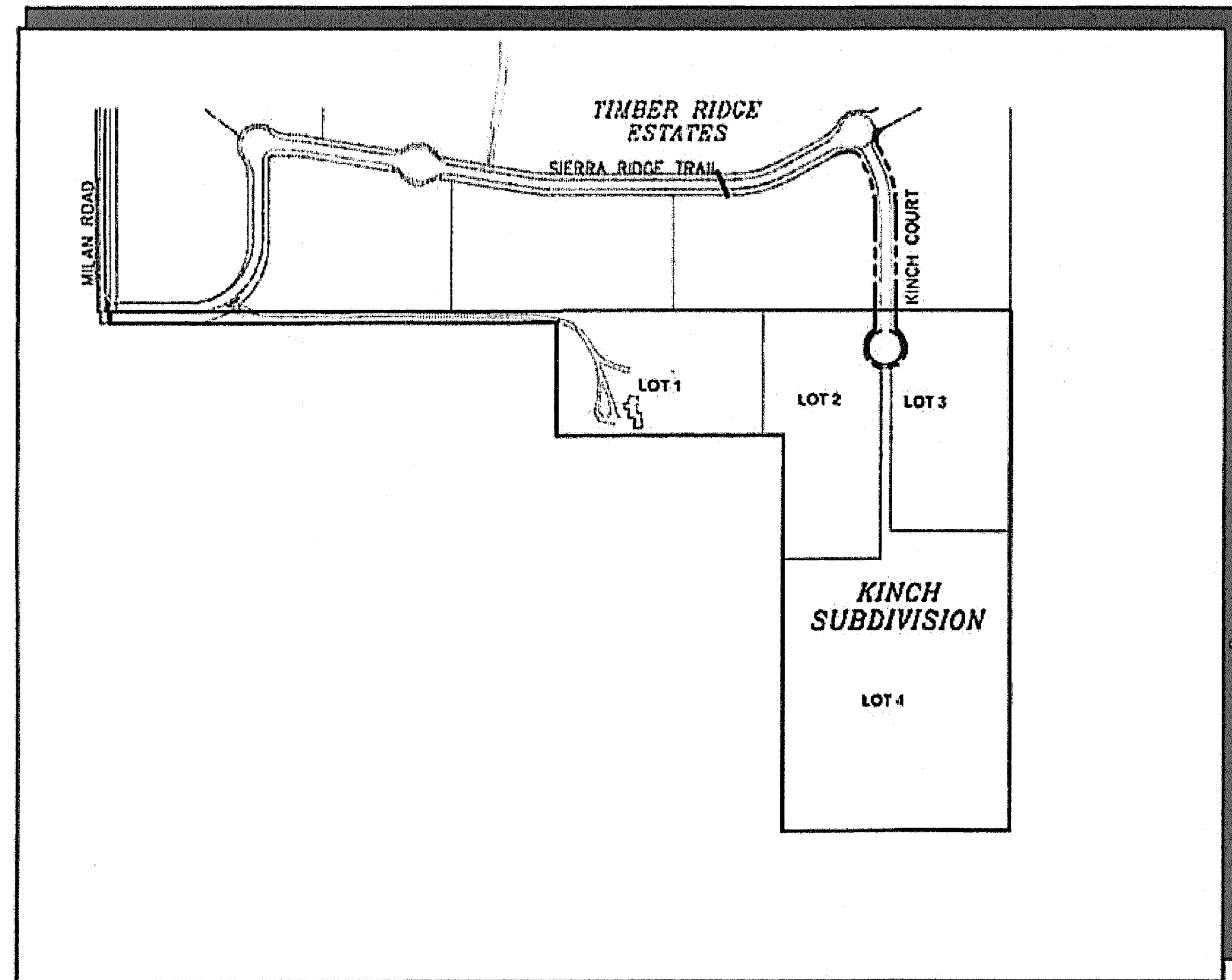


VICINITY MAP
NOT TO SCALE



SITE MAP
NOT TO SCALE

KINCH SUBDIVISION

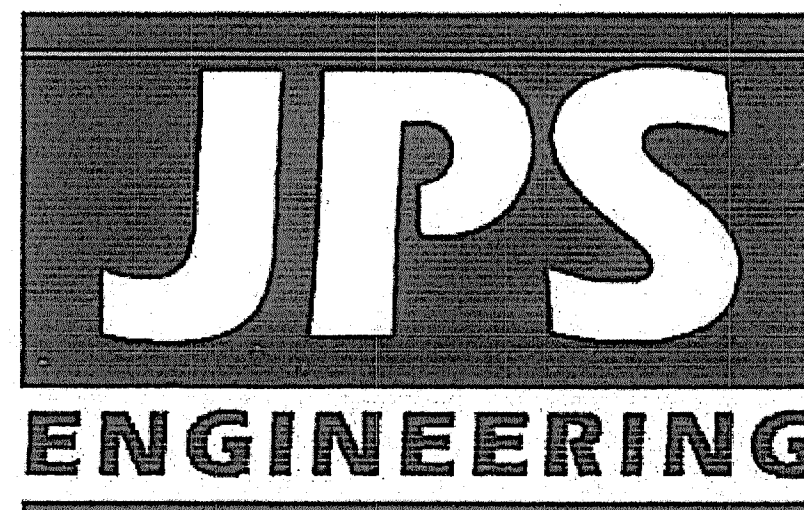
Construction Drawings

El Paso County, Colorado

PREPARED FOR:

PAUL AND AMY KINCH
10805 MILAM ROAD
Colorado Springs, CO 80908

PREPARED BY:



19 East Willamette Avenue
Colorado Springs, Colorado 80903

OCTOBER 2022
PCD FILING NO. MS-204

ENGINEERING RECORD DRAWINGS

ENGINEERING RECORD DRAWINGS
THESE RECORD DRAWINGS HAVE BEEN PREPARED, IN PART, ON THE BASIS OF INFORMATION COMPILED BY OTHERS. THEY ARE NOT INTENDED TO REPRESENT IN DETAIL THE EXACT LOCATION, TYPE OF COMPONENT, NOR MANNER OF CONSTRUCTION. THE ENGINEER WILL NOT BE RESPONSIBLE FOR ANY ERRORS OR OMISSIONS WHICH HAVE BEEN INCORPORATED INTO THE RECORD DRAWINGS. REFER TO ORIGINAL DRAWINGS FOR SIGNATURES AND SEALS.

John P. Schwab Date: 10/1/24
JOHN P. SCHWAB, PE# 29891
FOR AND ON BEHALF OF JPS ENGINEERING, INC.

SHEET INDEX

G1	TITLE SHEET
G2	GENERAL NOTES & TYPICAL SECTION
PP1	KINCH COURT PLAN & PROFILE

DESIGN ENGINEER'S STATEMENT:

THESE DETAILED PLANS AND SPECIFICATIONS WERE PREPARED UNDER MY DIRECTION AND SUPERVISION. SAID PLANS AND SPECIFICATIONS HAVE BEEN PREPARED ACCORDING TO THE CRITERIA ESTABLISHED BY THE COUNTY FOR DETAILED ROADWAY, DRAINAGE, GRADING AND EROSION CONTROL PLANS AND SPECIFICATIONS, AND SAID PLANS AND SPECIFICATIONS ARE IN CONFORMITY WITH APPLICABLE MASTER DRAINAGE PLANS AND MASTER TRANSPORTATION PLANS. SAID PLANS AND SPECIFICATIONS MEET THE PURPOSES FOR WHICH THE PARTICULAR ROADWAY AND DRAINAGE FACILITIES ARE DESIGNED AND ARE CORRECT TO THE BEST OF MY KNOWLEDGE AND BELIEF. I ACCEPT RESPONSIBILITY FOR ANY LIABILITIES INCURRED BY ANY NEGLIGENT ACTS, ERRORS OR OMISSIONS ON MY PART IN PREPARATION OF THESE DETAILED PLANS AND SPECIFICATIONS.

JOHN P. SCHWAB, P.E. #29891 DATE 11/5/22

OWNER/DEVELOPER'S STATEMENT:

I, THE OWNER/DEVELOPER HAVE READ AND WILL COMPLY WITH THE REQUIREMENTS OF THE GRADING AND EROSION CONTROL PLAN AND ALL OF THE REQUIREMENTS SPECIFIED IN THESE DETAILED PLANS AND SPECIFICATIONS.

PAUL KINCH DATE 12/6/22
10805 MILAM ROAD
COLORADO SPRINGS, COLORADO 80908

EL PASO COUNTY:

COUNTY PLAN REVIEW IS PROVIDED ONLY FOR GENERAL CONFORMANCE WITH COUNTY DESIGN CRITERIA. THE COUNTY IS NOT RESPONSIBLE FOR THE ACCURACY AND ADEQUACY OF THE DESIGN, DIMENSIONS, AND/OR ELEVATIONS WHICH SHALL BE CONFIRMED AT THE JOB SITE. THE COUNTY THROUGH THE APPROVAL OF THIS DOCUMENT ASSUMES NO RESPONSIBILITY FOR COMPLETENESS AND/OR ACCURACY OF THIS DOCUMENT.

FILED IN ACCORDANCE WITH THE REQUIREMENTS OF THE EL PASO COUNTY LAND DEVELOPMENT CODE, DRAINAGE CRITERIA MANUAL, VOLUMES 1 AND 2, AND ENGINEERING CRITERIA MANUAL AS AMENDED.

IN ACCORDANCE WITH ECM SECTION 1.12, THESE CONSTRUCTION DOCUMENTS WILL BE VALID FOR CONSTRUCTION FOR A PERIOD OF 2 YEARS, IF CONSTRUCTION HAS NOT STARTED WITHIN THOSE 2 YEARS, THE PLANS WILL NEED TO BE RESUBMITTED FOR APPROVAL, INCLUDING PAYMENT OF REVIEW FEES AT THE PLANNING AND COMMUNITY DEVELOPEMENT DIRECTORS DISCRETION.

COUNTY ENGINEER / ECM ADMINISTRATOR



PCD FILE NO. MS-204

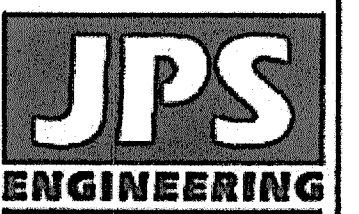
AGENCIES/CONTACTS

DEVELOPER:	PAUL AND AMY KINCH 10805 MILAM ROAD COLORADO SPRINGS, CO 80908	GAS DEPARTMENT:	BLACK HILLS ENERGY MR. GEORGE PETERSON (719) 393-6625
CIVIL ENGINEER:	JPS ENGINEERING, INC. 19 E. WILLAMETTE AVENUE COLORADO SPRINGS, CO 80903 MR. JOHN P. SCHWAB, P.E. (719) 477-9429	ELECTRIC DEPARTMENT:	MOUNTAIN VIEW ELECTRIC ASSOCIATION 11140 E. WOODMEN ROAD COLORADO SPRINGS, CO 80908 MR. DAVE WALDNER (719) 495-2283
LOCAL ROADS & DRAINAGE:	EL PASO COUNTY DSD 2880 INTERNATIONAL CIRCLE COLORADO SPRINGS, CO 80910 (719) 520-6300	TELEPHONE COMPANY:	OWEST COMMUNICATIONS (LOCATORS) (800) 922-1987
		FIRE DEPARTMENT:	BLACK FOREST FIRE DISTRICT FIRE MARSHAL (719) 495-4300

NOTE: NOTWITHSTANDING ANYTHING DEPICTED IN THESE PLANS IN WORDS OR GRAPHIC REPRESENTATION, ALL DESIGN AND CONSTRUCTION RELATED TO ROADS, STORM DRAINAGE AND EROSION CONTROL SHALL CONFORM TO THE STANDARDS AND REQUIREMENTS OF THE MOST RECENT VERSION OF THE RELEVANT ADOPTED EL PASO COUNTY STANDARDS, INCLUDING THE LAND DEVELOPMENT CODE, THE ENGINEERING CRITERIA MANUAL, THE DRAINAGE CRITERIA MANUAL, AND THE DRAINAGE CRITERIA MANUAL VOLUME 2. ANY DEVIATIONS FROM REGULATIONS AND STANDARDS MUST BE REQUESTED AND APPROVED IN WRITING TO BE ACCEPTABLE.

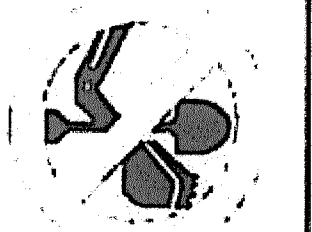
BASIS OF BEARING:
ALL BEARINGS USED HEREIN ARE BASED ON AN ASSUMED BEARING OF S00°09'37"E, A DISTANCE OF 2644.09 FEET BETWEEN A REBAR AND 2-1/2" ALUMINUM CAP STAMPED "HANNIGAN AND ASSOC. PLS 25629" AT THE WEST ONE-QUARTER CORNER OF SECTION 24, TOWNSHIP 12 SOUTH RANGE 56 WEST AND A REBAR AND 3-1/4" ALUMINUM CAP STAMPED "JR ENG. LTD. 10377" AT THE SOUTHWEST CORNER OF SAID SECTION 24.

BENCHMARK:
CONTROL POINTS AS SHOWN HEREON, ELEVATIONS ARE BASED UPON CITY OF COLORADO SPRINGS VERTICAL DATUM. (MONUMENT=F_65)



19 E. Willamette Ave.
Colorado Springs, CO
80903

PH: 719-477-9429
FAX: 719-471-0766
www.jpsengr.com



CALL UTILITY NOTIFICATION CENTER OF COLORADO
1-800-922-1987
CALL 7-BUSINESS DAYS IN ADVANCE BEFORE YOU DIG, GRAB, OR EXCAVATE FOR THE MARKING OF UNDERGROUND UTILITY LINES

KINCH SUBDIVISION

DATE	1/10/22
BY	JPS
DATE	1/22/22
BY	JPS
DATE	10/8/22
BY	JPS

TITLE SHEET

HORIZ. SCALE:	NA	DRAWN:	MSP
VERT. SCALE:	NA	DESIGNED:	JPS
SURVEYED:	NA	CHECKED:	JPS
CREATED:	11/3/21	LAST MODIFIED:	10/8/22
PROJECT NO.:	072101	MODIFIED BY:	MSP

SHEET:

G1

ENGINEERING RECORD DRAWINGS
 THESE RECORD DRAWINGS HAVE BEEN PREPARED, IN PART, ON THE BASIS OF INFORMATION COMPILED BY OTHERS. THEY ARE NOT INTENDED TO REPRESENT IN DETAIL THE EXACT LOCATION, TYPE OF COMPONENT, NOR MANNER OF CONSTRUCTION. THE ENGINEER WILL NOT BE RESPONSIBLE FOR ANY ERRORS OR OMISSIONS WHICH HAVE BEEN INCORPORATED INTO THE RECORD DRAWINGS. REFER TO ORIGINAL DRAWINGS FOR SIGNATURES AND SEALS.

John P. Schwab Date: 10/1/24
 JOHN P. SCHWAB, PE# 29891
 FOR AND ON BEHALF OF JPS ENGINEERING, INC.

COUNTY GENERAL NOTES:

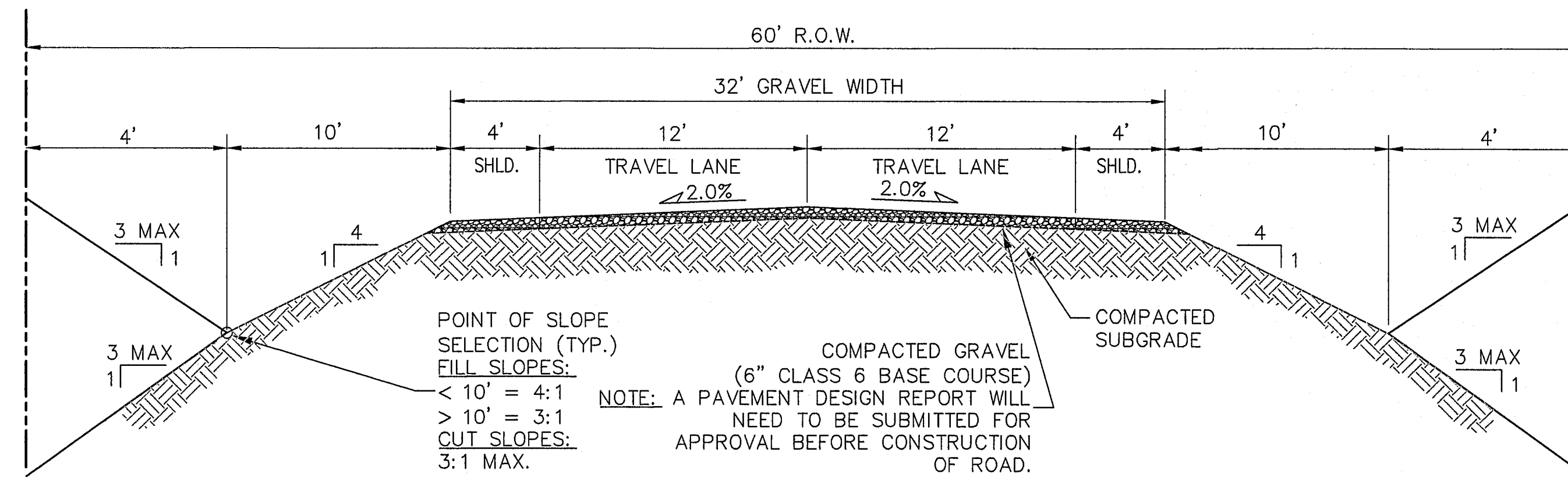
- ALL DRAINAGE AND ROADWAY CONSTRUCTION SHALL MEET THE STANDARDS AND SPECIFICATIONS OF THE CITY OF COLORADO SPRINGS/EL PASO COUNTY DRAINAGE CRITERIA MANUAL, VOLUMES 1 AND 2, AND THE EL PASO COUNTY ENGINEERING CRITERIA MANUAL.
- CONTRACTOR SHALL BE RESPONSIBLE FOR THE NOTIFICATION AND FIELD NOTIFICATION OF ALL EXISTING UTILITIES, WHETHER SHOWN ON THE PLANS OR NOT, BEFORE BEGINNING CONSTRUCTION. LOCATION OF EXISTING UTILITIES SHALL BE VERIFIED BY THE CONTRACTOR PRIOR TO CONSTRUCTION. CALL 811 TO CONTACT THE UTILITY NOTIFICATION CENTER OF COLORADO (UNCC).
- CONTRACTOR SHALL KEEP A COPY OF THESE APPROVED PLANS, THE GRADING AND EROSION CONTROL PLAN, THE STORMWATER MANAGEMENT PLAN (SWMP), THE SOILS AND GEOTECHNICAL REPORT, AND THE APPROPRIATE DESIGN AND CONSTRUCTION STANDARDS AND SPECIFICATIONS AT THE JOB SITE AT ALL TIMES, INCLUDING THE FOLLOWING:
 - EL PASO COUNTY ENGINEERING CRITERIA MANUAL (ECM)
 - CITY OF COLORADO SPRINGS/EL PASO COUNTY DRAINAGE CRITERIA MANUAL, VOLUMES 1 AND 2
 - COLORADO DEPARTMENT OF TRANSPORTATION (CDOT) STANDARD SPECIFICATIONS FOR ROAD AND BRIDGE CONSTRUCTION
 - CDOT M & S STANDARDS
- NOTWITHSTANDING ANYTHING DEPICTED IN THESE PLANS IN WORDS OR GRAPHIC REPRESENTATION, ALL DESIGN AND CONSTRUCTION RELATED TO ROADS, STORM DRAINAGE AND EROSION CONTROL SHALL CONFORM TO THE STANDARDS AND REQUIREMENTS OF THE MOST RECENT VERSION OF THE RELEVANT ADOPTED EL PASO COUNTY STANDARDS, INCLUDING THE LAND DEVELOPMENT CODE, THE DRAINAGE CRITERIA MANUAL, AND THE DRAINAGE CRITERIA MANUAL VOLUME 2. ANY DEVIATIONS FROM REGULATIONS AND STANDARDS MUST BE REQUESTED, AND APPROVED, IN WRITING. ANY MODIFICATIONS NECESSARY TO MEET CRITERIA AFTER-THE-FACT WILL BE ENTIRELY THE DEVELOPER'S RESPONSIBILITY TO RECTIFY.
- IT IS THE DESIGN ENGINEER'S RESPONSIBILITY TO ACCURATELY SHOW EXISTING CONDITIONS, BOTH ONSITE AND OFFSITE, ON THE CONSTRUCTION PLANS. ANY MODIFICATIONS NECESSARY DUE TO CONFLICTS, OMISSIONS, OR CHANGED CONDITIONS WILL BE ENTIRELY THE DEVELOPER'S RESPONSIBILITY TO RECTIFY.
- CONTRACTOR SHALL SCHEDULE A PRE-CONSTRUCTION MEETING WITH EL PASO COUNTY DEVELOPMENT SERVICES DEPARTMENT (DSD) - INSPECTIONS, PRIOR TO STARTING CONSTRUCTION.
- IT IS THE CONTRACTOR'S RESPONSIBILITY TO UNDERSTAND THE REQUIREMENTS OF ALL JURISDICTIONAL AGENCIES AND TO OBTAIN ALL REQUIRED PERMITS, INCLUDING BUT NOT LIMITED TO EL PASO COUNTY EROSION AND STORMWATER QUALITY CONTROL PERMIT (ESQCP), REGIONAL BUILDING FLOODPLAIN DEVELOPMENT PERMIT, U.S. ARMY CORPS OF ENGINEERS-ISSUED 401 AND/OR 404 PERMITS, AND COUNTY AND STATE FUGITIVE DUST PERMITS.
- CONTRACTOR SHALL NOT DEVIATE FROM THE PLANS WITHOUT FIRST OBTAINING WRITTEN APPROVAL FROM THE DESIGN ENGINEER AND DSD. CONTRACTOR SHALL NOTIFY THE DESIGN ENGINEER IMMEDIATELY UPON DISCOVERY OF ANY ERRORS OR INCONSISTENCIES.
- ALL STORM DRAIN PIPE SHALL BE CLASS III RCP WITH CLASS B BEDDING UNLESS OTHERWISE NOTED AND APPROVED BY DSD.
- CONTRACTOR SHALL COORDINATE GEOTECHNICAL TESTING PER ECM STANDARDS. PAVEMENT DESIGN SHALL BE APPROVED BY EL PASO COUNTY DSD PRIOR TO PLACEMENT OF CURB AND CUTTER AND PAVEMENT.
- ALL CONSTRUCTION TRAFFIC MUST ENTER/EXIT THE SITE AT APPROVED CONSTRUCTION ACCESS POINTS.
- SIGHT VISIBILITY TRIANGLES AS IDENTIFIED IN THE PLANS SHALL BE PROVIDED AT ALL INTERSECTIONS. OBSTRUCTIONS GREATER THAN 18 INCHES ABOVE FLOWLINE ARE NOT ALLOWED WITHIN SIGHT TRIANGLES.
- SIGNING AND STRIPING SHALL COMPLY WITH EL PASO COUNTY DOT AND MUTCD CRITERIA.
- CONTRACTOR SHALL OBTAIN ANY PERMITS REQUIRED BY EL PASO COUNTY DOT, INCLUDING WORK WITHIN THE RIGHT-OF-WAY AND SPECIAL TRANSPORT PERMITS.
- THE LIMITS OF CONSTRUCTION SHALL REMAIN WITHIN THE PROPERTY LINE UNLESS OTHERWISE NOTED. THE OWNER/DEVELOPER SHALL OBTAIN WRITTEN PERMISSION AND EASEMENTS, WHERE REQUIRED, FROM ADJOINING PROPERTY OWNER(S) PRIOR TO ANY OFF-SITE DISTURBANCE, GRADING, OR CONSTRUCTION.

COUNTY SIGNING AND STRIPING NOTES:

- ALL SIGNS AND PAVEMENT MARKINGS SHALL BE IN COMPLIANCE WITH THE CURRENT MANUAL ON UNIFORM TRAFFIC CONTROL DEVICES (MUTCD).
- REMOVAL OF EXISTING PAVEMENT MARKINGS SHALL BE ACCOMPLISHED BY A METHOD THAT DOES NOT MATERIALLY DAMAGE THE PAVEMENT. THE PAVEMENT MARKINGS SHALL BE REMOVED TO THE EXTENT THAT THEY WILL NOT BE VISIBLE UNDER DAY OR NIGHT CONDITIONS. AT NO TIME WILL IT BE ACCEPTABLE TO PAINT OVER EXISTING PAVEMENT MARKINGS.
- ANY DEVIATION FROM THE STRIPING AND SIGNING PLAN SHALL BE APPROVED BY EL PASO COUNTY DEVELOPMENT SERVICES.
- ALL SIGNS SHOWN ON THE SIGNING AND STRIPING PLAN SHALL BE NEW SIGNS. EXISTING SIGNS MAY REMAIN OR BE REUSED IF THEY MEET CURRENT EL PASO COUNTY AND MUTCD STANDARDS.
- STREET NAME AND REGULATORY STOP SIGNS SHALL BE ON THE SAME POST AT INTERSECTIONS.
- ALL REMOVED SIGNS SHALL BE DISPOSED OF IN A PROPER MANNER BY THE CONTRACTOR.
- ALL STREET NAME SIGNS SHALL HAVE "C" SERIES LETTERS, WITH LOCAL ROADWAY SIGNS BEING 4" UPPER-LOWER CASE LETTERING ON 8" BLANK AND COLLECTOR ROADWAY SIGNS BEING 6" LETTERING, UPPER-LOWER CASE ON 12" BLANK, WITH 1/2" WHITE BORDER THAT IS NOT RECESSED.
- ALL TRAFFIC SIGNS SHALL HAVE A MINIMUM HIGH INTENSITY PRISMATIC GRADE SHEETING.
- ALL LOCAL RESIDENTIAL STREET SIGNS SHALL BE MOUNTED ON A 1.75" X 1.75" SQUARE TUBE SIGN POST AND STUB POST BASE. FOR OTHER APPLICATIONS, REFER TO THE CDOT STANDARD S-614-8 REGARDING USE OF THE P2 TUBULAR STEEL POST SLIPBASE DESIGN.
- ALL SIGNS SHALL BE SINGLE SHEET ALUMINUM WITH 0.100" MINIMUM THICKNESS.
- ALL LIMIT LINES/STOP LINES, CROSSWALK LINES, PAVEMENT LEGENDS, AND ARROWS SHALL BE A MINIMUM 125 MIL THICKNESS PREFORMED THERMOPLASTIC PAVEMENT MARKINGS WITH TAPERED LEADING EDGES PER CDOT STANDARD S-627-1. WORD AND SYMBOL MARKINGS SHALL BE THE NARROW TYPE. STOP BARS SHALL BE 24" IN WIDTH. CROSSWALKS LINES SHALL BE 12" WIDE AND 8' LONG PER CDOT S-627-1.
- ALL LONGITUDINAL LINES SHALL BE A MINIMUM 15MIL THICKNESS EPOXY PAINT. ALL NON-LOCAL RESIDENTIAL ROADWAYS SHALL INCLUDE BOTH RIGHT AND LEFT EDGE LINE STRIPING AND ANY ADDITIONAL STRIPING AS REQUIRED BY CDOT S-627-1.
- THE CONTRACTOR SHALL NOTIFY EL PASO COUNTY DEVELOPMENT SERVICES (719) 520-6819 PRIOR TO AND UPON COMPLETION OF SIGNING AND STRIPING.
- THE CONTRACTOR SHALL OBTAIN A WORK IN THE RIGHT OF WAY PERMIT FROM THE EL PASO COUNTY DEPARTMENT OF TRANSPORTATION PRIOR TO ANY SIGNAGE OR STRIPING WORK WITHIN AN EXISTING EL PASO COUNTY ROADWAY.

PROJECT GENERAL NOTES:

- EXISTING CONTOUR DATA CONSISTS OF AERIAL TOPOGRAPHIC SURVEY DATA PROVIDED BY OWNER'S SURVEYOR. JPS ENGINEERING TAKES NO RESPONSIBILITY FOR THE ACCURACY OF EXISTING TOPOGRAPHIC MAPPING.
- STATIONING IS AT CENTERLINE UNLESS OTHERWISE NOTED. ALL ELEVATIONS ARE AT EDGE OF ASPHALT (EOA) UNLESS OTHERWISE NOTED. ALL DIMENSIONS ARE FROM EDGE OF ASPHALT TO EDGE OF ASPHALT UNLESS OTHERWISE NOTED.
- PROPOSED CONTOURS SHOWN ARE TO FINISHED GRADE.
- LENGTHS SHOWN FOR STORM SEWER PIPES ARE TO CENTER OF MANHOLE.
- CONTRACTOR SHALL REMOVE AND DISPOSE OF ALL EXISTING STRUCTURES, DEBRIS, WASTE AND OTHER UNSUITABLE FILL MATERIAL FOUND WITHIN THE LIMITS OF EXCAVATION.
- MATCH INTO EXISTING GRADES AT 3:1 MAX CUT AND FILL SLOPES.
- REVEGETATION OF ALL DISTURBED AREAS SHALL BE DONE WITH SPECIFIED SEED MIX WITHIN 60 DAYS AFTER FINE GRADING IS COMPLETE.
- EROSION CONTROL SHALL CONSIST OF SILT FENCE AND CONTROL MEASURES AS SHOWN ON THE DRAWING, AND TOPSOIL WITH GRASS SEED, WHICH WILL BE WATERED UNTIL VEGETATION HAS BEEN REESTABLISHED.
- THE EROSION CONTROL MEASURES OUTLINED ON THIS PLAN ARE THE RESPONSIBILITY OF THE DEVELOPER TO MONITOR AND REPLACE, REGRADE, AND REBUILD AS NECESSARY UNTIL VEGETATION IS REESTABLISHED.
- EROSION CONTROL MEASURES SHALL BE IMPLEMENTED IN A MANNER THAT WILL PROTECT ADJACENT PROPERTIES AND PUBLIC FACILITIES FROM THE ADVERSE EFFECTS OF EROSION AND SEDIMENTATION AS A RESULT OF CONSTRUCTION AND EARTHWORK ACTIVITIES WITHIN THE PROJECT SITE.
- ADDITIONAL EROSION CONTROL MEASURES MAY BE REQUIRED AS DETERMINED BY SITE CONDITIONS.
- THE CONTRACTOR WILL TAKE THE NECESSARY PRECAUTIONS TO PROTECT EXISTING UTILITIES FROM DAMAGE DUE TO THIS OPERATION. ANY DAMAGE TO THE UTILITIES WILL BE REPAIRED AT THE CONTRACTOR'S EXPENSE, AND ANY SERVICE DISRUPTION WILL BE SETTLED BY THE CONTRACTOR.
- ALL BACKFILL, SUB-BASE, AND/OR BASE COURSE MATERIAL SHALL BE COMPACTED PER EL PASO COUNTY AND CDOT STANDARDS AND SPECIFICATIONS.
- ALL FINISHED GRADES SHALL HAVE A MINIMUM 1.0% SLOPE TO PROVIDE POSITIVE DRAINAGE.
- WHERE PROPOSED SLOPES CONFLICT WITH PROPOSED SPOT ELEVATIONS, SPOT ELEVATIONS SHALL GOVERN.
- CONTRACTOR SHALL OBTAIN ALL REQUIRED PERMITS PRIOR TO BEGINNING WORK.



RURAL LOCAL-GRAVEL ROAD (PUBLIC)
 TYPICAL SECTION (A)
 N.T.S.

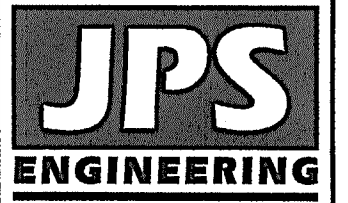
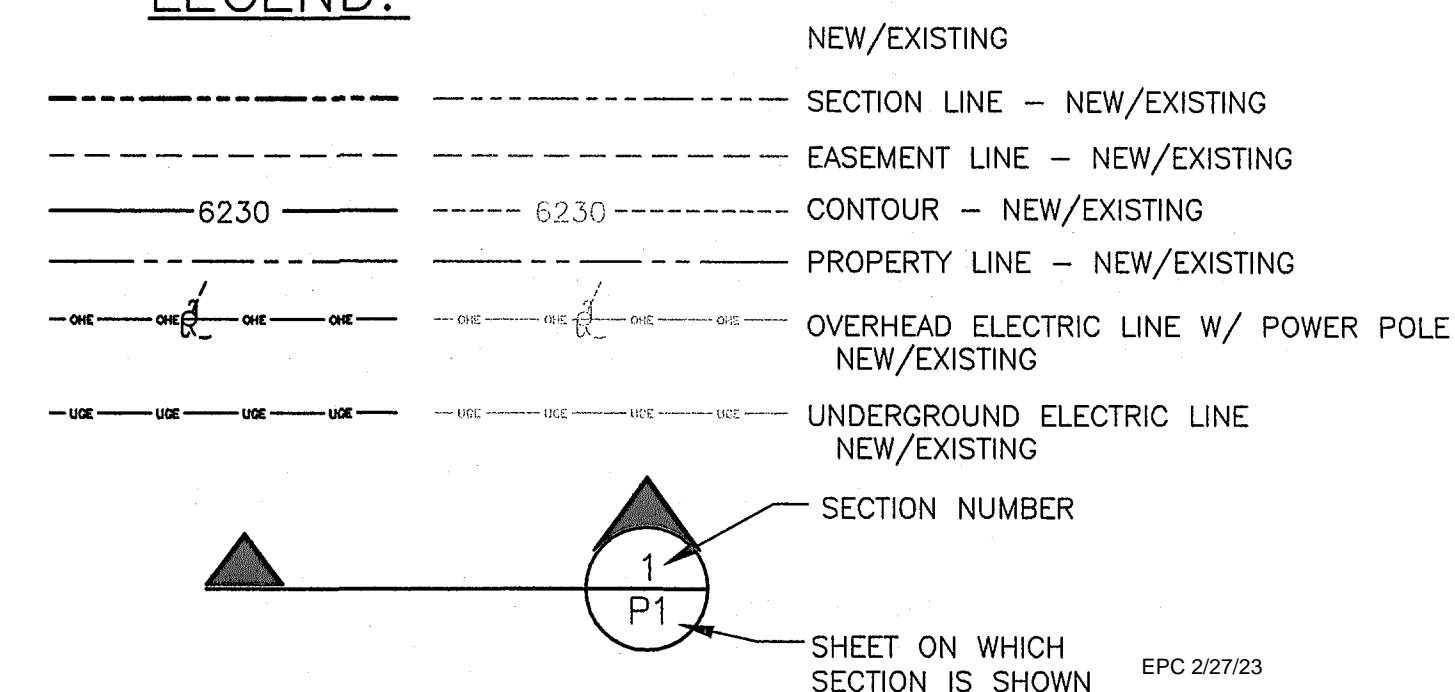
DESIGN DATA

ROAD CLASSIFICATION:	RURAL LOCAL RESIDENTIAL
DESIGN SPEED:	30 MPH
POSTED SPEED:	30 MPH
ROADWAY WIDTH (GRAVEL):	32' EOG-EOG
MIN. HORIZONTAL RADIUS:	300'
MIN. GRADE:	1.0%
MAX. GRADE:	8.0%
MIN. K-VALUE (CREST):	19
MIN. K-VALUE (SAG):	37

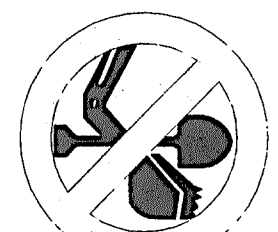
GENERAL DRAINAGE NOTES:

- INDIVIDUAL BUILDERS SHALL PROVIDE POSITIVE DRAINAGE AWAY FROM STRUCTURES AND ACCOUNT FOR POTENTIAL CROSS-LOT DRAINAGE IMPACTS WITHIN EACH LOT.
- BUILDERS AND PROPERTY OWNERS SHALL IMPLEMENT & MAINTAIN EROSION CONTROL BEST MANAGEMENT PRACTICES FOR PROTECTION OF DOWNSTREAM PROPERTIES AND FACILITIES INCLUDING PROTECTION OF EXISTING GRASS BUFFER STRIPS ALONG THE DOWNSTREAM PROPERTY BOUNDARIES.

LEGEND:



19 E. Willamette Ave.
 Colorado Springs, CO
 80903
 PH: 719-477-9429
 FAX: 719-471-0766
 www.jpsengr.com



CALL UTILITY NOTIFICATION CENTER OF COLORADO
 1-800-922-1987
 CALL 2-BUSINESS DAYS IN ADVANCE BEFORE YOU DIG, GRADE, OR EXCAVATE FOR THE MEMBER UTILITIES.

KINCH SUBDIVISION

GENERAL NOTES & TYPICAL SECTION



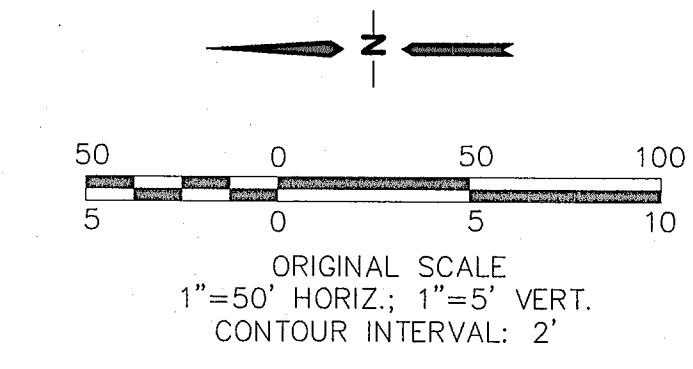
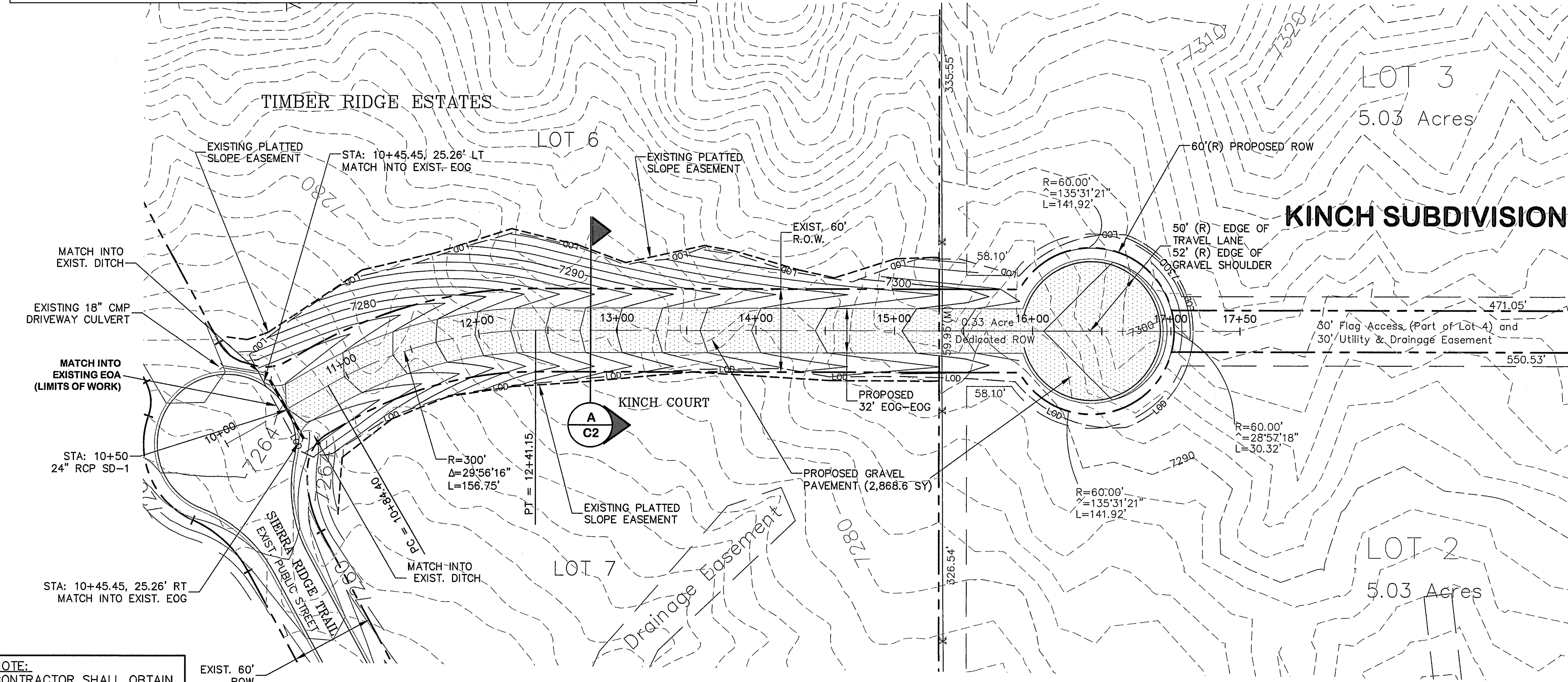
HORIZ. SCALE:	N/A	DRAWN:	MSP
VERT. SCALE:	N/A	DESIGNED:	JPS
SURVEYED:	HANNIGAN	CHECKED:	JPS
CREATED:	11/3/21	LAST MODIFIED:	7/22/22
PROJECT NO:	072101	MODIFIED BY:	MSP
SHEET:			

G2

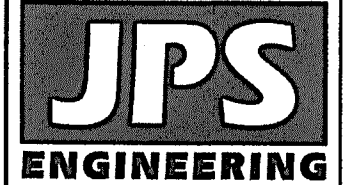
ENGINEERING RECORD DRAWINGS
 THESE RECORD DRAWINGS HAVE BEEN PREPARED, IN PART, ON THE BASIS OF INFORMATION COMPILED BY OTHERS. THEY ARE NOT INTENDED TO REPRESENT IN DETAIL, THE EXACT LOCATION, TYPE OF COMPONENT, NOR MANNER OF CONSTRUCTION. THE ENGINEER WILL NOT BE RESPONSIBLE FOR ANY ERRORS OR OMISSIONS WHICH HAVE BEEN INCORPORATED INTO THE RECORD DRAWINGS. REFER TO ORIGINAL DRAWINGS FOR SIGNATURES AND SEALS.

Date: 10/1/24
 JOHN P. SCHWAB, PE# 29891
 FOR AND ON BEHALF OF JPS ENGINEERING, INC.

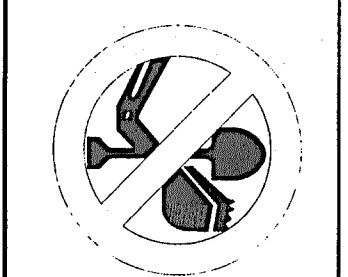
ENGINEERING RECORD DRAWINGS



NOTE:
 CONTRACTOR SHALL OBTAIN A "WORK-IN-ROW PERMIT" FOR ALL WORK WITHIN COUNTY ROW.



19 E. Willamette Ave.
 Colorado Springs, CO 80903
 PH: 719-477-9429
 FAX: 719-471-0766
 www.jpsenr.com

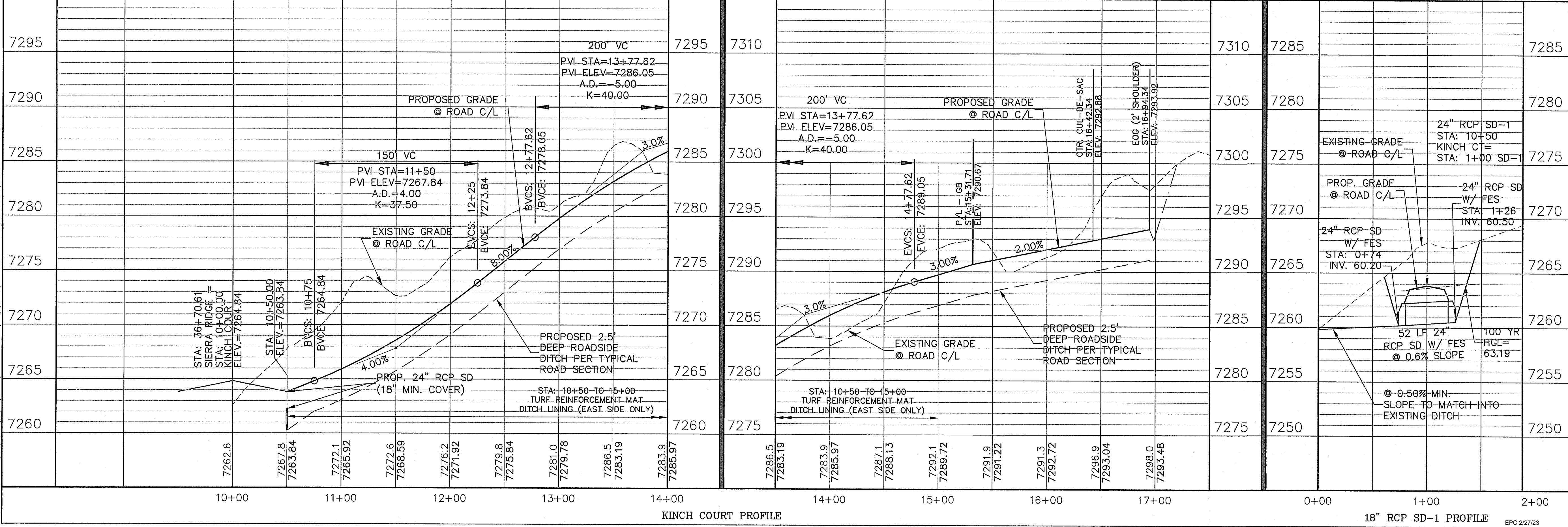


CALL UTILITY NOTIFICATION CENTER OF COLORADO
 1-800-922-1987
 CALL 2-BUSINESS DAYS IN ADVANCE BEFORE YOU DIG, GRADE, OR EXCAVATE FOR THE MEMBER UTILITIES.

KINCH SUBDIVISION

NO.	REVISION	BY	DATE
1	EPC SUBMITTAL	JPS	1/10/22
2	EPC COMMENTS	JPS	7/22/22
3	EPC COMMENTS	JPS	10/8/22

PLAN & PROFILE KINCH COURT



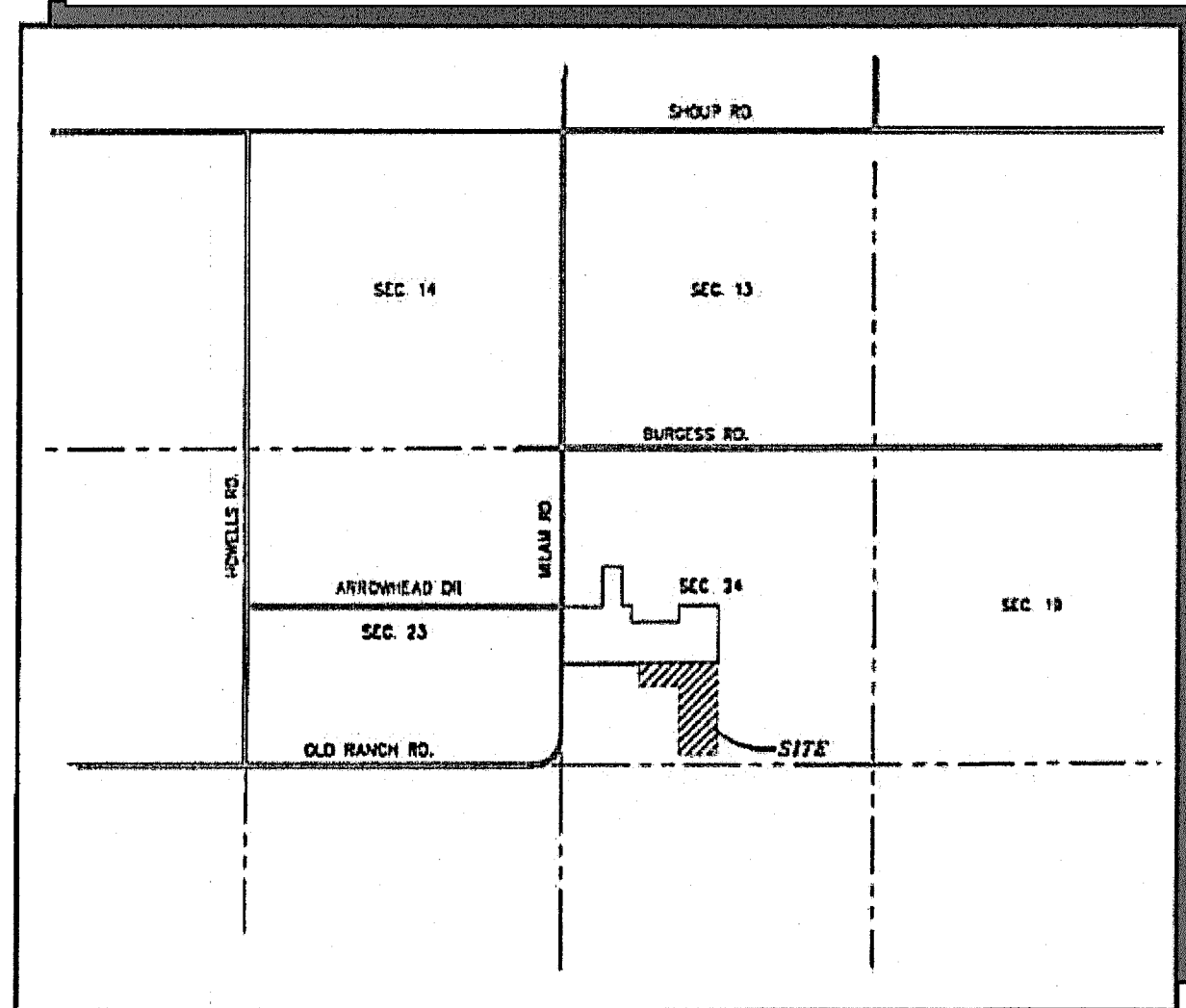
HORIZ. SCALE: 1"=50'	DRAWN: MSP
VERT. SCALE: 1"=5'	DESIGNED: JPS
SURVEYED: HANNIGAN	CHECKED: JPS
CREATED: 11/3/21	LAST MODIFIED: 10/8/22
PROJECT NO: 072101	MODIFIED BY: MSP

SHEET: **PP1**

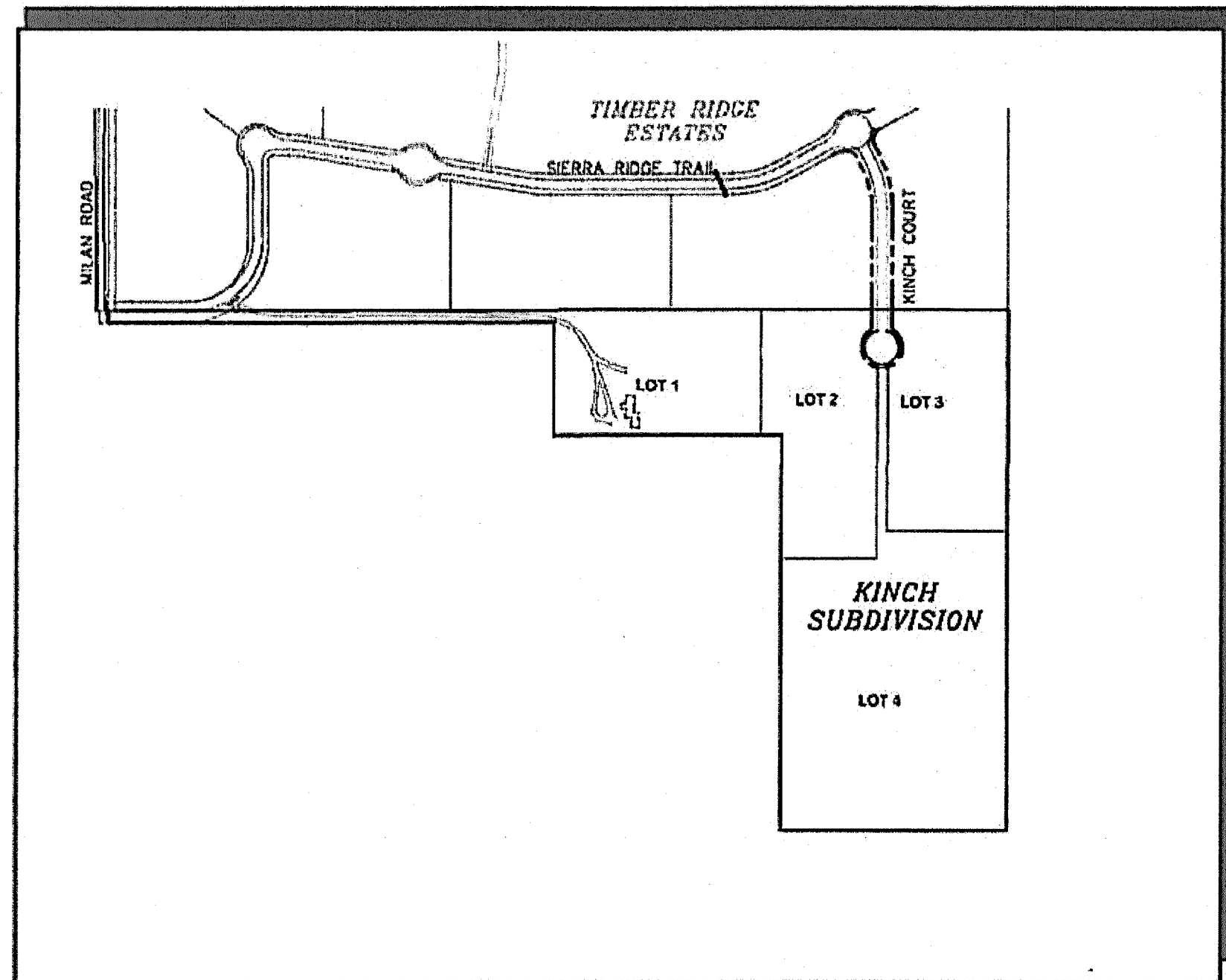
C:\Users\Owner\Desktop\jps\projects\072101\kinch\dwg\Civil\PP ORIGINAL.dwg Oct 08, 2022 - 7:24pm

ENGINEERING RECORD DRAWINGS
 THESE RECORD DRAWINGS HAVE BEEN PREPARED, IN PART, ON THE BASIS OF INFORMATION COMPILED BY OTHERS. THEY ARE NOT INTENDED TO REPRESENT IN DETAIL, THE EXACT LOCATION, TYPE OF COMPONENT, NOR MANNER OF CONSTRUCTION. THE ENGINEER WILL NOT BE RESPONSIBLE FOR ANY ERRORS OR OMISSIONS WHICH HAVE BEEN INCORPORATED INTO THE RECORD DRAWINGS. REFER TO ORIGINAL DRAWINGS FOR SIGNATURES AND SEALS.

John P. Schwab Date: 10/1/24
 JOHN P. SCHWAB, PE# 29891
 FOR AND ON BEHALF OF JPS ENGINEERING, INC.



VICINITY MAP
 NOT TO SCALE



SITE MAP
 NOT TO SCALE

KINCH SUBDIVISION

Grading & Erosion Control Plans

El Paso County, Colorado

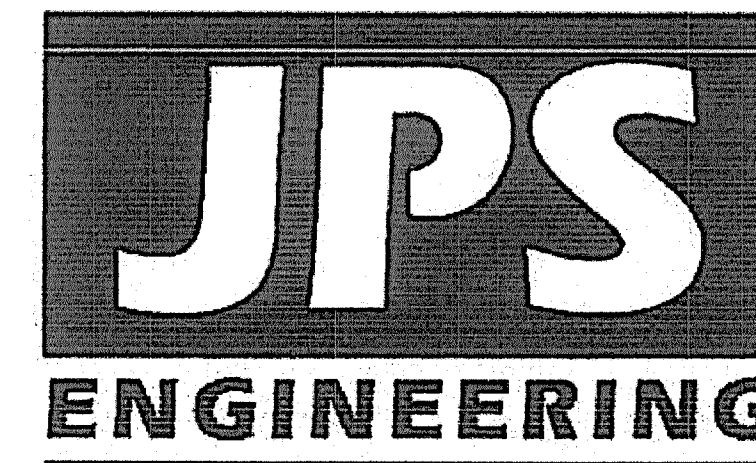
PREPARED FOR:

PAUL AND AMY KINCH

10805 MILAM ROAD

Colorado Springs, CO 80908

PREPARED BY:



19 East Willamette Avenue
Colorado Springs, Colorado 80903

OCTOBER 2022

PCD FILING NO. MS-204

SHEET INDEX

C1.0	GEC TITLE SHEET
C1.1	GRADING & EROSION CONTROL PLAN
C2	EROSION CONTROL NOTES & DETAILS

ENGINEER'S STATEMENT:

THIS GRADING AND EROSION CONTROL PLAN WAS PREPARED UNDER MY DIRECTION AND SUPERVISION AND IS CORRECT TO THE BEST OF MY KNOWLEDGE AND BELIEF. SAID PLAN HAS BEEN PREPARED ACCORDING TO THE CRITERIA ESTABLISHED BY THE COUNTY OF EL PASO GRADING AND EROSION CONTROL PLANS. I ACCEPT RESPONSIBILITY FOR ANY ERRORS OR OMISSIONS CAUSED BY NEGLIGENT ACTS, ERRORS OR OMISSIONS ON MY PART IN PREPARING THIS PLAN.

JOHN P. SCHWAB, P.E. #29891



11/5/23
 DATE

OWNER / DEVELOPER'S STATEMENT:

I, THE OWNER / DEVELOPER HAVE READ AND WILL COMPLY WITH THE REQUIREMENTS OF THE GRADING AND EROSION CONTROL PLAN.

PAUL KINCH
 10805 MILAM ROAD
 COLORADO SPRINGS, COLORADO 80908

12/6/22
 DATE

EL PASO COUNTY:

COUNTY PLAN REVIEW IS PROVIDED ONLY FOR GENERAL CONFORMANCE WITH COUNTY DESIGN CRITERIA. THE COUNTY IS NOT RESPONSIBLE FOR THE ACCURACY AND ADEQUACY OF THE DESIGN, DIMENSIONS, AND/OR ELEVATIONS WHICH SHALL BE CONFIRMED AT THE JOB SITE. THE COUNTY THROUGH THE APPROVAL OF THIS DOCUMENT ASSUMES NO RESPONSIBILITY FOR COMPLETENESS AND/OR ACCURACY OF THIS DOCUMENT.

FILED IN ACCORDANCE WITH THE REQUIREMENTS OF THE EL PASO COUNTY LAND DEVELOPMENT CODE, DRAINAGE CRITERIA MANUAL, VOLUMES 1 AND 2, AND ENGINEERING CRITERIA MANUAL AS AMENDED.

IN ACCORDANCE WITH ECM SECTION 1.12, THESE CONSTRUCTION DOCUMENTS WILL BE VALID FOR CONSTRUCTION FOR A PERIOD OF 2 YEARS. IF CONSTRUCTION HAS NOT STARTED WITHIN THOSE 2 YEARS, THE PLANS WILL NEED TO BE RESUBMITTED FOR APPROVAL, INCLUDING PAYMENT OF REVIEW FEES AT THE PLANNING AND COMMUNITY DEVELOPMENT DIRECTORS DISCRETION.

COUNTY ENGINEER / ECM ADMINISTRATOR



PCD FILE NO. MS-204

NOTE: NOTWITHSTANDING ANYTHING DEPICTED IN THESE PLANS IN WORDS OR GRAPHIC REPRESENTATION, ALL DESIGN AND CONSTRUCTION RELATED TO ROADS, STORM DRAINAGE AND EROSION CONTROL SHALL CONFORM TO THE STANDARDS AND REQUIREMENTS OF THE MOST RECENT VERSION OF THE RELEVANT ADOPTED EL PASO COUNTY STANDARDS, INCLUDING THE LAND DEVELOPMENT CODE, THE ENGINEERING CRITERIA MANUAL, THE DRAINAGE CRITERIA MANUAL, AND THE DRAINAGE CRITERIA MANUAL VOLUME 2. ANY DEVIATIONS FROM REGULATIONS AND STANDARDS MUST BE REQUESTED AND APPROVED IN WRITING TO BE ACCEPTABLE.

BASIS OF BEARING:
 ALL BEARINGS USED HEREIN ARE BASED ON AN ASSUMED BEARING OF S00°09'37"E, A DISTANCE OF 2644.09 FEET BETWEEN A REBAR AND 2-1/2" ALUMINUM CAP STAMPED "HANNIGAN AND ASSOC. PLS 25629" AT THE WEST ONE-QUARTER CORNER OF SECTION 24, TOWNSHIP 12 SOUTH RANGE 66 WEST AND A REBAR AND 3-1/4" ALUMINUM CAP STAMPED "JR ENG. LTD. 10377" AT THE SOUTHWEST CORNER OF SAID SECTION 24.

BENCHMARK:
 CONTROL POINTS AS SHOWN HEREON. ELEVATIONS ARE BASED UPON CITY OF COLORADO SPRINGS VERTICAL DATUM. (MONUMENT=F_65)

AGENCIES/CONTACTS

DEVELOPER: PAUL AND AMY KINCH
 10805 MILAM ROAD
 COLORADO SPRINGS, CO 80908

CIVIL ENGINEER: JPS ENGINEERING, INC.
 19 E. WILLAMETTE AVENUE
 COLORADO SPRINGS, CO 80903
 MR. JOHN P. SCHWAB, P.E.
 (719) 477-9429

LOCAL ROADS & DRAINAGE: EL PASO COUNTY DSD
 2880 INTERNATIONAL CIRCLE
 COLORADO SPRINGS, CO 80910
 (719) 520-6300

GAS DEPARTMENT: BLACK HILLS ENERGY
 MR. GEORGE PETERSON
 (719) 393-6625

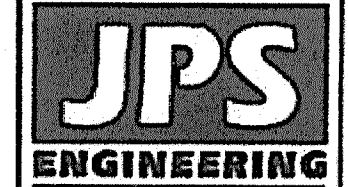
ELECTRIC DEPARTMENT: MOUNTAIN VIEW ELECTRIC ASSOCIATION
 11140 E. WOODMAN ROAD
 COLORADO SPRINGS, CO 80908
 MR. DAVE WALDNER
 (719) 495-2283

TELEPHONE COMPANY: OWEST COMMUNICATIONS
 (LOCATORS) (800) 922-1987
 A.T. & T.
 (LOCATORS) (719) 635-3674

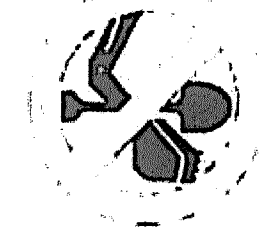
FIRE DEPARTMENT: BLACK FOREST FIRE DISTRICT
 FIRE MARSHAL
 (719) 495-4300

KINCH SUBDIVISION

GEC TITLE SHEET



19 E. Willamette Ave.
 Colorado Springs, CO
 80903
 Ph: 719-477-9429
 Fax: 719-471-0766
 www.psengr.com



CALL UTILITY NOTIFICATION CENTER OF COLORADO
 1-800-922-1987
 CALL 2-BUSINESS DAYS IN ADVANCE
 BEFORE YOU DIG, GRAB, OR EXCAVATE
 FOR THE NUMBER UNITS

NO.	DATE	BY	REVISION
1	1/10/22	JPS	FPC SUBMITTAL
2	1/22/22	JPS	FPC COMMENTS
3	10/8/22	JPS	FPC COMMENTS

HORIZ. SCALE:	NA	DRAWN:	MSP
VERT. SCALE:	NA	DESIGNED:	JPS
SURVEYED:	HANNIGAN	CHECKED:	JPS
CREATED:	11/3/21	LAST MODIFIED:	10/8/22
PROJECT NO:	072101	MODIFIED BY:	MSP

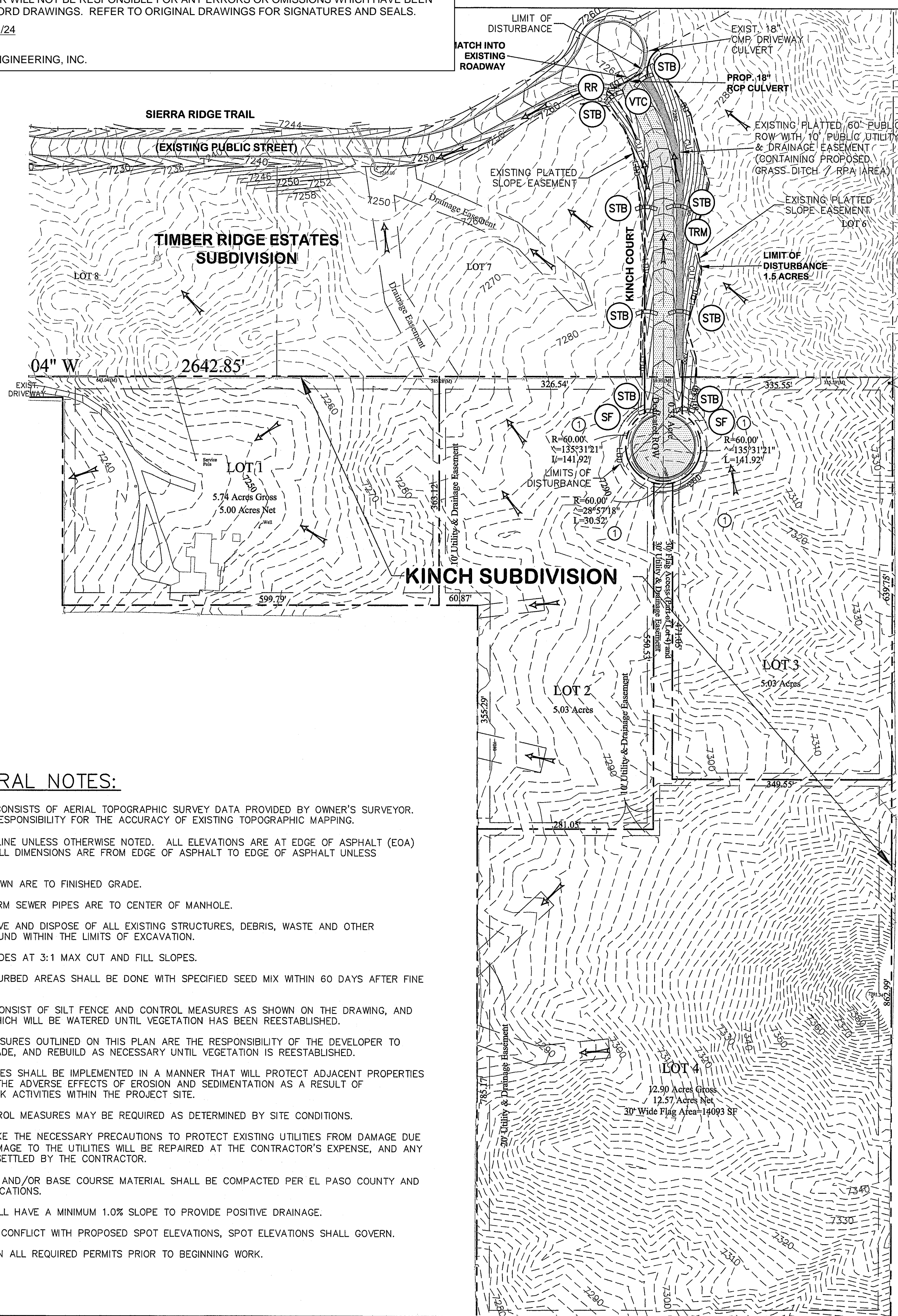
SHEET: **C1.0**

ENGINEERING RECORD DRAWINGS

ENGINEERING RECORD DRAWINGS

THESE RECORD DRAWINGS HAVE BEEN PREPARED, IN PART, ON THE BASIS OF INFORMATION COMPILED BY OTHERS. THEY ARE NOT INTENDED TO REPRESENT IN DETAIL, THE EXACT LOCATION, TYPE OF COMPONENT, NOR MANNER OF CONSTRUCTION. THE ENGINEER WILL NOT BE RESPONSIBLE FOR ANY ERRORS OR OMISSIONS WHICH HAVE BEEN INCORPORATED INTO THE RECORD DRAWINGS. REFER TO ORIGINAL DRAWINGS FOR SIGNATURES AND SEALS.

John P. Schwab Date: 10/1/24
 JOHN P. SCHWAB, PE# 29891
 FOR AND ON BEHALF OF JPS ENGINEERING, INC.



GENERAL DRAINAGE NOTES:

1. INDIVIDUAL BUILDERS SHALL PROVIDE POSITIVE DRAINAGE AWAY FROM STRUCTURES AND ACCOUNT FOR POTENTIAL CROSS-LOT DRAINAGE IMPACTS WITHIN EACH LOT.

2. BUILDERS AND PROPERTY OWNERS SHALL IMPLEMENT & MAINTAIN EROSION CONTROL BEST MANAGEMENT PRACTICES FOR PROTECTION OF DOWNSTREAM PROPERTIES AND FACILITIES INCLUDING PROTECTION OF EXISTING GRASS BUFFER STRIPS ALONG THE DOWNSTREAM PROPERTY BOUNDARIES.

ESTIMATED EARTHWORK QUANTITY:

UNCLASSIFIED EXCAVATION (TOTAL CUT) = 6,708 CY
 * EMBANKMENT FILL = 478 CY
 NET (CUT) = 6,230 CY
 *(ASSUMES 15% COMPACTION FACTOR)

NOTE: THIS ESTIMATE IS PROVIDED FOR INFORMATION ONLY, REPRESENTING THE CALCULATED BULK EARTHWORK VOLUME NOT INCLUDING ANY ADJUSTMENTS FOR PAVEMENT DEPTHS. CONTRACTOR SHALL MAKE HIS OWN DETERMINATION OF EARTHWORK QUANTITIES AS BASIS FOR BID PRICING AND NOTIFY ENGINEER OF ANY DISCREPANCIES.

DRIVEWAY CULVERT TABLE

LOT NO.	SIZE (DIA.)	MIN. SLOPE
1	18"	1.0%
2	18"	1.0%
3	18"	1.0%
4	18"	1.0%

KEYED NOTES:

① CONTRACTOR MAY WASTE EXCESS CUT MATERIAL OR BORROW SUITABLE FILL MATERIAL FROM THIS AREA. MATCH INTO EXISTING GRADES WITH 3:1 MAX CUT AND FILL SLOPES AND MAINTAIN POSITIVE DRAINAGE IN ALL AREAS.

BMP PHASING

- INITIAL BMP'S**
- INSTALL VTC
 - INSTALL SILT FENCE
- INTERIM BMP'S**
- STRAW BALE CHECK DAMS
- FINAL BMP'S**
- RIPRAP APRONS
 - SEEDING

BMP NOTES:

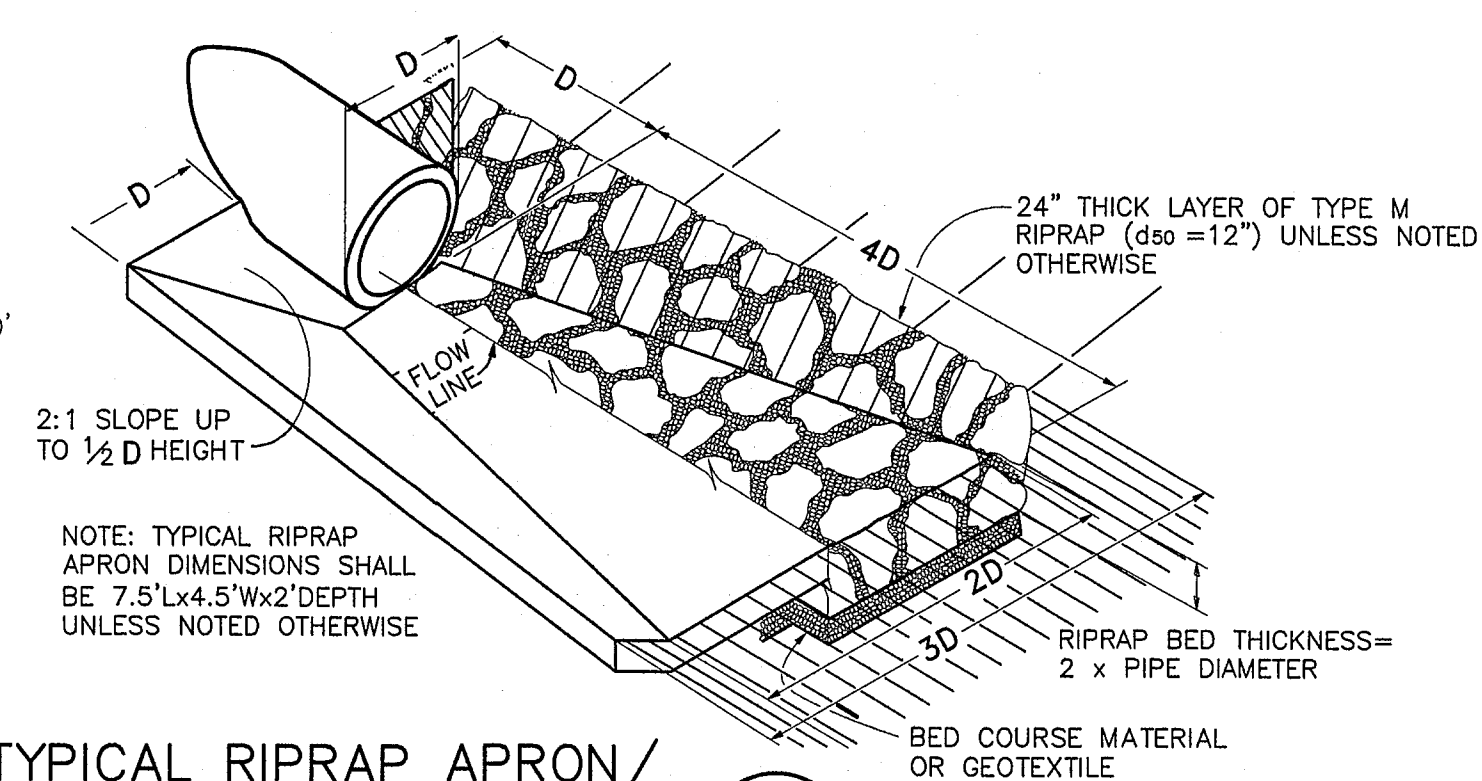
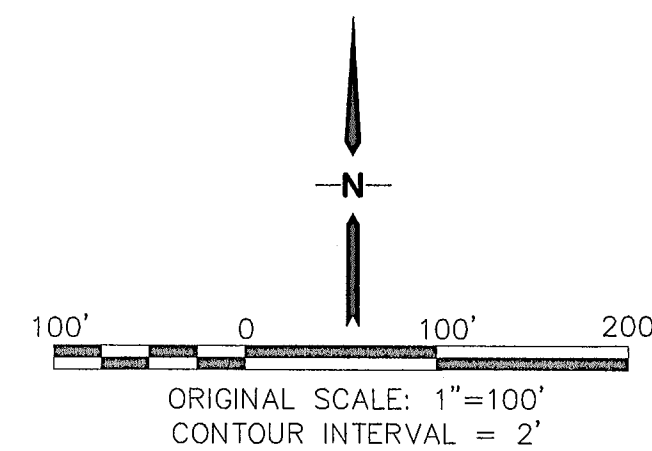
- EXISTING VEGETATION CONSISTS OF NATIVE GRASSES
- NO DEDICATED ASPHALT OR CONCRETE BATCH PLANTS ARE PLANNED ON SITE
- CONTRACTOR SHALL UPDATE AND ANNOTATE THE SWMP MAPS TO SHOW THE LOCATION OF THE CONSTRUCTION TRAILER, STABILIZED STAGING AREA, CWA AND OTHER ITEMS AS THESE LOCATIONS ARE DETERMINED ON SITE.

EROSION CONTROL:

- PROPERTY LINES
- EXISTING CONTOUR
- PROPOSED CULVERT
- FLOW DIRECTION ARROW
- FLOWLINE
- RIPRAP (RR)
- SILT FENCE (SF)
- LIMITS OF DISTURBANCE/CONSTRUCTION BOUNDARY
- CUT/FILL DEMARCATION LINES (NOTE: THIS PROJECT IS COMPLETELY IN CUT CONDITION)
- VEHICLE TRACKING PAD (VTC)
- STRAW BALE CHECK DAM (STB)
- TURF REINFORCEMENT MAT DITCH LINING (TRM)
- CONCRETE WASHOUT AREA (CWA)
- STABILIZED STAGING AREA (SSA)
- SEED & MULCH (SM)

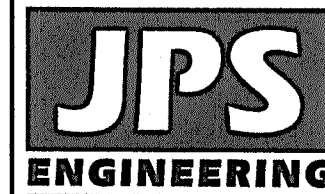
PROJECT GENERAL NOTES:

- EXISTING CONTOUR DATA CONSISTS OF AERIAL TOPOGRAPHIC SURVEY DATA PROVIDED BY OWNER'S SURVEYOR. JPS ENGINEERING TAKES NO RESPONSIBILITY FOR THE ACCURACY OF EXISTING TOPOGRAPHIC MAPPING.
- STATIONING IS AT CENTERLINE UNLESS OTHERWISE NOTED. ALL ELEVATIONS ARE AT EDGE OF ASPHALT (EOA) UNLESS OTHERWISE NOTED. ALL DIMENSIONS ARE FROM EDGE OF ASPHALT TO EDGE OF ASPHALT UNLESS OTHERWISE NOTED.
- PROPOSED CONTOURS SHOWN ARE TO FINISHED GRADE.
- LENGTHS SHOWN FOR STORM SEWER PIPES ARE TO CENTER OF MANHOLE.
- CONTRACTOR SHALL REMOVE AND DISPOSE OF ALL EXISTING STRUCTURES, DEBRIS, WASTE AND OTHER UNSUITABLE FILL MATERIAL FOUND WITHIN THE LIMITS OF EXCAVATION.
- MATCH INTO EXISTING GRADES AT 3:1 MAX CUT AND FILL SLOPES.
- REVEGETATION OF ALL DISTURBED AREAS SHALL BE DONE WITH SPECIFIED SEED MIX WITHIN 60 DAYS AFTER FINE GRADING IS COMPLETE.
- EROSION CONTROL SHALL CONSIST OF SILT FENCE AND CONTROL MEASURES AS SHOWN ON THE DRAWING, AND TOPSOIL WITH GRASS SEED, WHICH WILL BE WATERED UNTIL VEGETATION HAS BEEN REESTABLISHED.
- THE EROSION CONTROL MEASURES OUTLINED ON THIS PLAN ARE THE RESPONSIBILITY OF THE DEVELOPER TO MONITOR AND REPLACE, REGRADE, AND REBUILD AS NECESSARY UNTIL VEGETATION IS REESTABLISHED.
- EROSION CONTROL MEASURES SHALL BE IMPLEMENTED IN A MANNER THAT WILL PROTECT ADJACENT PROPERTIES AND PUBLIC FACILITIES FROM THE ADVERSE EFFECTS OF EROSION AND SEDIMENTATION AS A RESULT OF CONSTRUCTION AND EARTHWORK ACTIVITIES WITHIN THE PROJECT SITE.
- ADDITIONAL EROSION CONTROL MEASURES MAY BE REQUIRED AS DETERMINED BY SITE CONDITIONS.
- THE CONTRACTOR WILL TAKE THE NECESSARY PRECAUTIONS TO PROTECT EXISTING UTILITIES FROM DAMAGE DUE TO THIS OPERATION. ANY DAMAGE TO THE UTILITIES WILL BE REPAIRED AT THE CONTRACTOR'S EXPENSE, AND ANY SERVICE DISRUPTION WILL BE SETTLED BY THE CONTRACTOR.
- ALL BACKFILL, SUB-BASE, AND/OR BASE COURSE MATERIAL SHALL BE COMPACTED PER EL PASO COUNTY AND CDOT STANDARDS AND SPECIFICATIONS.
- ALL FINISHED GRADES SHALL HAVE A MINIMUM 1.0% SLOPE TO PROVIDE POSITIVE DRAINAGE.
- WHERE PROPOSED SLOPES CONFLICT WITH PROPOSED SPOT ELEVATIONS, SPOT ELEVATIONS SHALL GOVERN.
- CONTRACTOR SHALL OBTAIN ALL REQUIRED PERMITS PRIOR TO BEGINNING WORK.

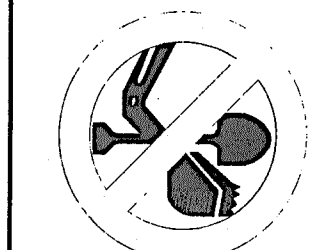


TYPICAL RIPRAP APRON/
 CULVERT OUTLET PAVING (1)
 NOT TO SCALE

KINCH SUBDIVISION



19 E. Willamette Ave.
 Colorado Springs, CO 80903
 PH: 719-477-9429
 FAX: 719-471-0766
 www.jpseng.com



CALL UTILITY NOTIFICATION CENTER OF COLORADO
 1-800-922-1987
 CALL 2-BUSINESS DAYS IN ADVANCE BEFORE THE MARKING OF UNDERGROUND MEMBER UTILITIES.

NO.	REVISION	DATE	BY
1	EPC SUBMITTAL	1/10/22	JPS
2	EPC COMMENTS	7/22/22	JPS
3	EPC COMMENTS	10/8/22	JPS

GRADING & EROSION CONTROL PLAN



HORIZ. SCALE: 1"=100'	DRAWN: MSP
VERT. SCALE: N/A	DESIGNED: JPS
SURVEYED: HANNIGAN	CHECKED: JPS
CREATED: 11/3/21	LAST MODIFIED: 10/8/22
PROJECT NO: 072101	MODIFIED BY: MSP

SHEET: **C1.1**

ENGINEERING RECORD DRAWINGS

SEEDING MIX:

Table with 3 columns: GRASS, VARIETY, AMOUNT IN PLS. LBS. PER ACRE. Includes rows for CREsted WHEAT GRASS, PERENIAL RYE, WESTERN WHEATGRASS, SMOOTH BROME GRASS, and SIDEOTS GRAMA.

SEEDING & FERTILIZER APPLICATION: DRILL SEED OR HYDRO-SEED PER CDOT SPEC. SECTION 212.

MULCHING APPLICATION: CONFORM TO CDOT SPEC-SECTION 213.

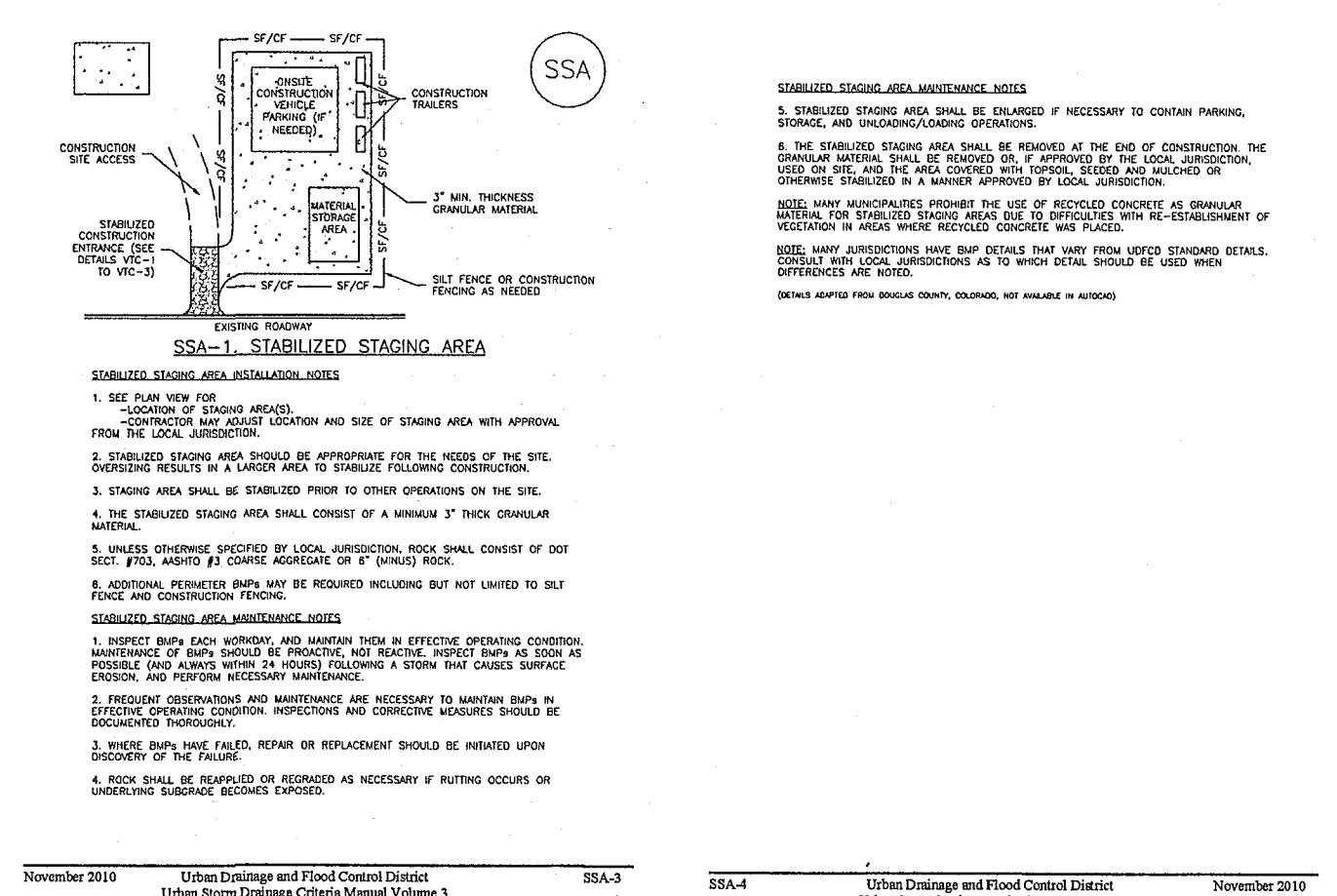
SEDIMENT CONTROL MAINTENANCE PROGRAM:

PERIODIC SITE INSPECTIONS BI-WEEKLY RE-VEGETATION OF EXPOSED SOILS WITHIN 21 DAYS OF GRADING SEDIMENT REMOVAL FROM BMP'S MONTHLY REMOVAL OF BMP'S AFTER STABILIZATION ACHIEVED

1 AND AFTER ANY PRECIPITATION OR SNOW MELT EVENT THAT CAUSES SURFACE EROSION.

ESTIMATED TIME SCHEDULE: Table with 2 columns: Activity (INSTALL BMP'S, ROADWAY GRADING, SEEDING & MULCHING, STABILIZATION) and Date (JANUARY 2023, JANUARY 2023, JUNE 2024, SEPTEMBER 2025)

Stabilized Staging Area (SSA) SM-6 SM-6 Stabilized Staging Area (SSA)

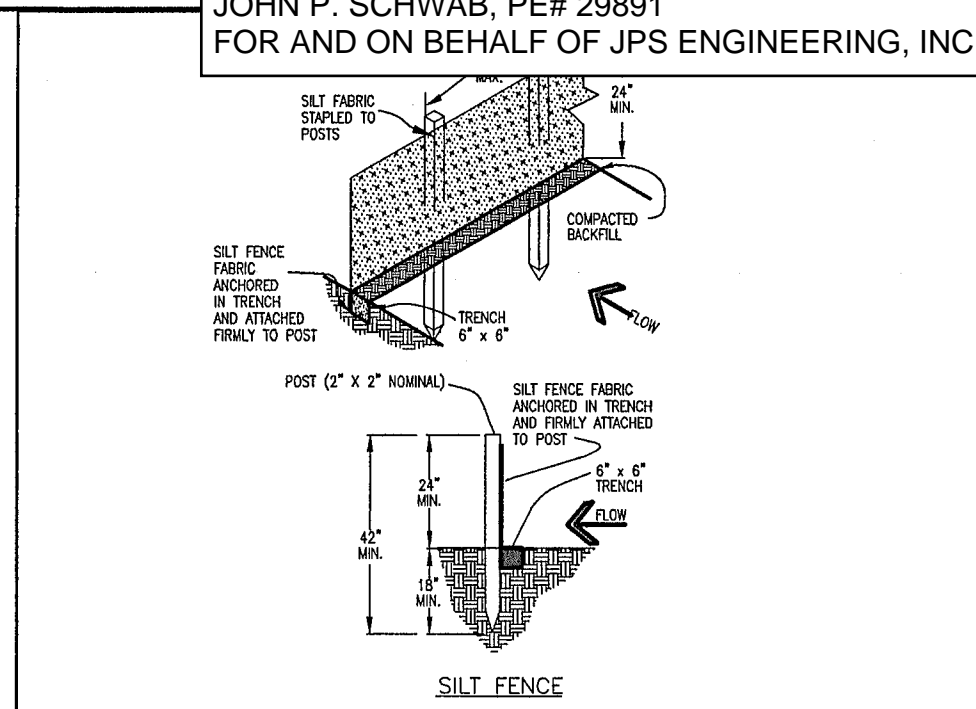


ENGINEERING RECORD DRAWINGS THESE RECORD DRAWINGS HAVE BEEN PREPARED, IN PART, ON THE BASIS OF INFORMATION COMPILED BY OTHERS. THEY ARE NOT INTENDED TO REPRESENT IN DETAIL, THE EXACT LOCATION, TYPE OF COMPONENT, NOR MANNER OF CONSTRUCTION.

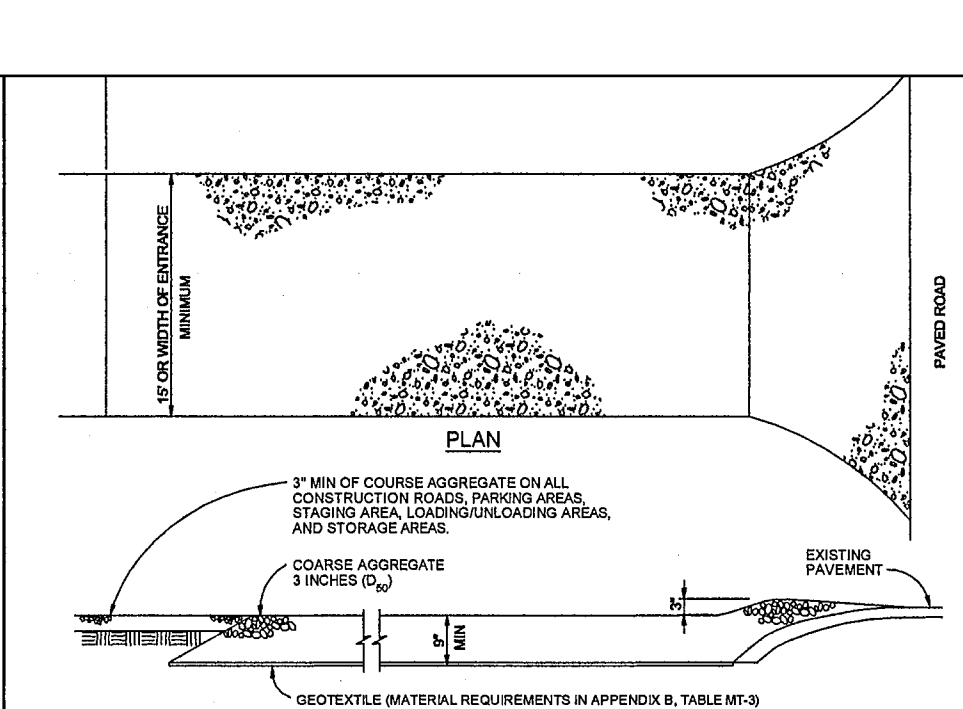
Date: 10/1/24 JOHN P. SCHWAB, PE# 29891 FOR AND ON BEHALF OF JPS ENGINEERING, INC.

STANDARD NOTES FOR EL PASO COUNTY GRADING AND EROSION CONTROL PLANS:

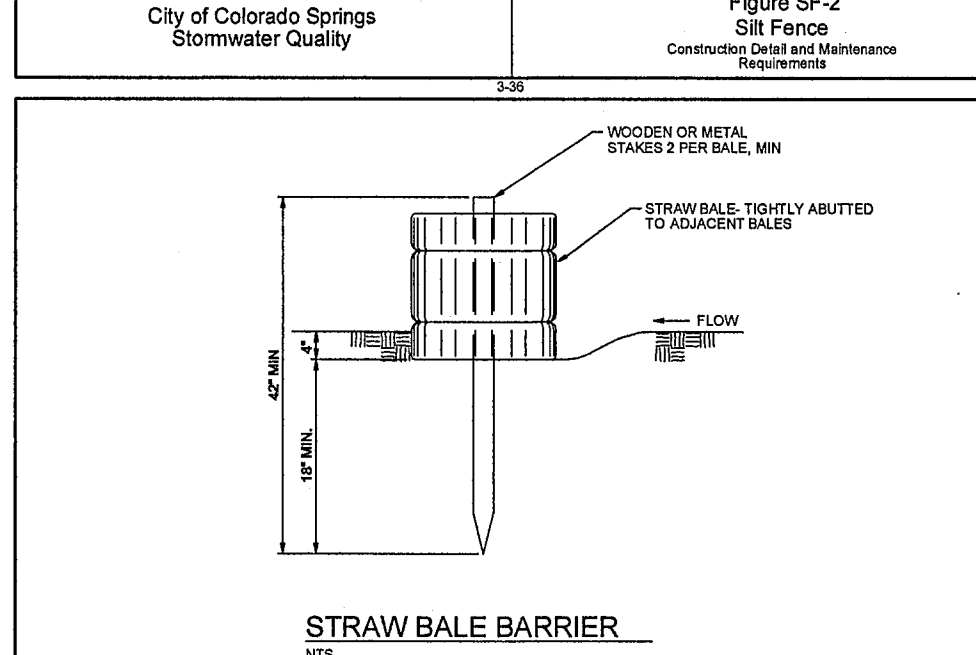
- REVISED 7/02/19 1. STORMWATER DISCHARGES FROM CONSTRUCTION SITES SHALL NOT CAUSE OR THREATEN TO CAUSE POLLUTION, CONTAMINATION, OR DEGRADATION OF STATE WATERS...



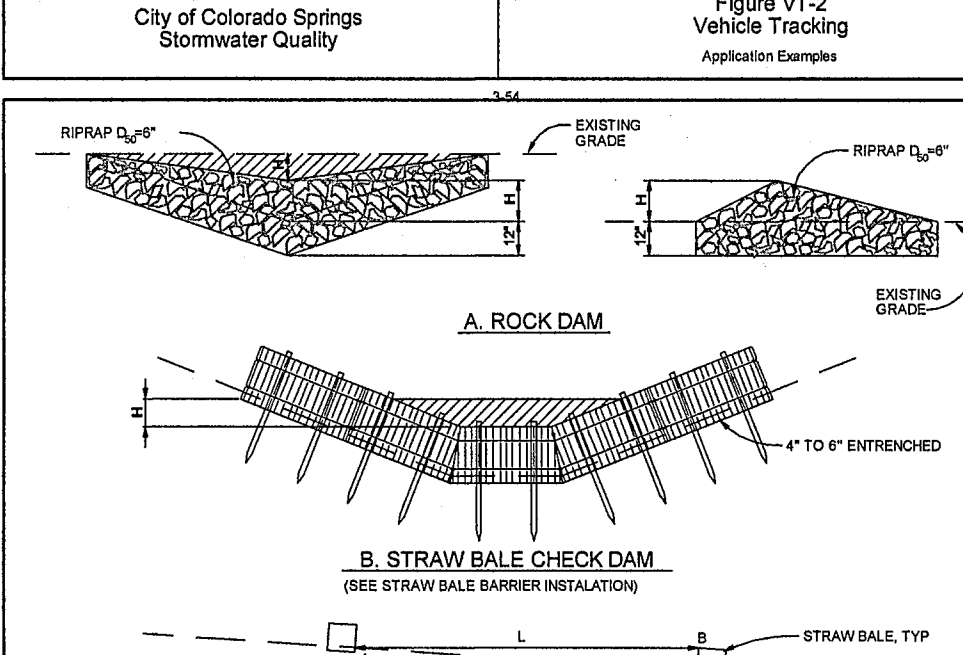
SILT FENCE NOTES INSTALLATION REQUIREMENTS 1. SILT FENCES SHALL BE INSTALLED PRIOR TO ANY LAND DISTURBING ACTIVITIES...



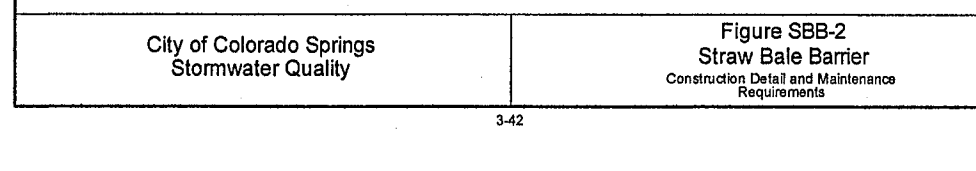
VEHICLE TRACKING NOTES INSTALLATION REQUIREMENTS 1. ALL ENTRANCES TO THE CONSTRUCTION SITE ARE TO BE STABILIZED PRIOR TO CONSTRUCTION BEGINNING...



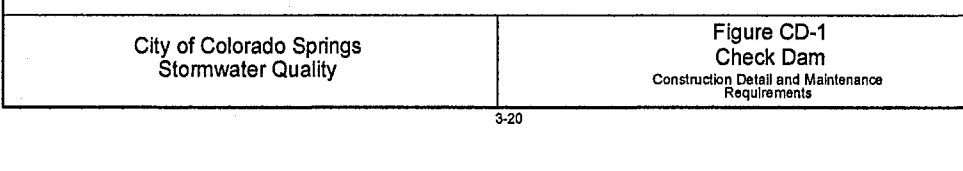
STRAW BALE BARRIER NOTES INSTALLATION REQUIREMENTS 1. STRAW BALE BARRIERS SHALL BE INSTALLED PRIOR TO ANY LAND DISTURBING ACTIVITIES...



ROCK DAM NOTES INSTALLATION REQUIREMENTS 1. CONTRACTOR SHALL INSPECT STRAW BALE BARRIERS IMMEDIATELY AFTER EACH RAINFALL...



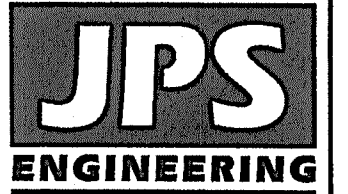
CONCRETE WASHOUT AREA (CWA) MM-1 CONCRETE WASHOUT AREA PLAN 1. CWA SHALL BE INSTALLED PRIOR TO CONSTRUCTION OF ANY ROAD OR DRIVEWAY...



INLET PROTECTION (IP) SC-6 CULVERT INLET PROTECTION 1. BEFORE EACH RAINFALL, OPERATOR SHALL INSPECT THE CONDITION OF THE CULVERT INLET PROTECTION...

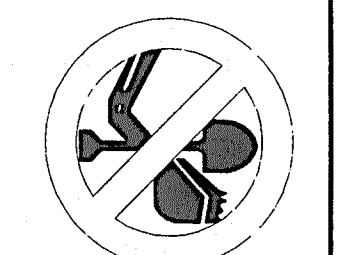
COLORADO DEPARTMENT OF PUBLIC HEALTH AND ENVIRONMENT WATER QUALITY CONTROL DIVISION WQCD - PERMITS 4300 CHERRY CREEK DRIVE SOUTH DENVER, CO 80246-1530 ATTN: PERMITS UNIT

NOTE: NOTWITHSTANDING ANY DETAILS, NOTES OR PLANS SHOWN ON THESE DRAWINGS, ALL EROSION CONTROL DESIGNS AND INSTALLATIONS SHALL CONFORM TO EL PASO COUNTY STANDARDS AND POLICIES UNLESS OTHERWISE APPROVED IN WRITING.



19 E. Willamette Ave. Colorado Springs, CO 80903

PH: 719-477-9429 FAX: 719-471-0766 www.jpsenr.com

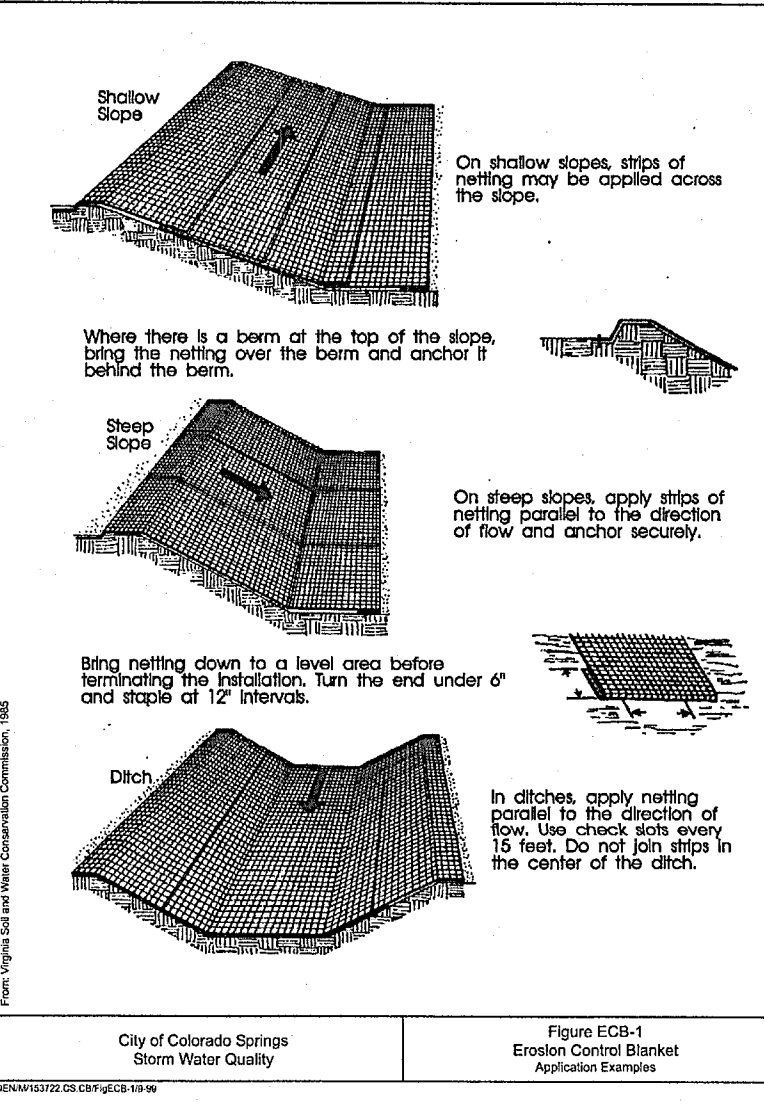


CALL UTILITY NOTIFICATION CENTER OF COLORADO 1-800-922-1987

KINCH SUBDIVISION

Revision table with columns: No., Date, By, Revision, Description. Shows revisions for EPC SUBMITTAL and EPC COMMENTS.

EROSION CONTROL NOTES & DETAILS



Scale and Drawing Information table: HORIZ. SCALE: N/A, VERT. SCALE: N/A, DRAWN: MSP, DESIGNED: JPS, SURVEYED: HANNIGAN, CHECKED: JPS, CREATED: 11/29/21, LAST MODIFIED: 7/20/22, PROJECT NO: 072101, MODIFIED BY: MSP, SHEET: C2



Vertical text on the left margin: C:\Users\Michael.Dorobax\Documents\Projects\072101_kinch\wpw\Civil\2 - EAC.dwg Jul 22, 2022 - 12:08pm