

PntNo	Bearing	Distance	Northing	Easting	Description
	N 00°03'25" E	314.40	11102.64	16721.52	
	N 89°55'03" E	434.32	11417.05	16721.83	
	N 00°11'18" E	515.91	11417.67	17156.15	
	N 89°54'20" E	448.44	11933.57	17157.84	
	N 00°11'21" E	60.00	11934.31	17606.28	
	N 89°54'20" E	506.50	11994.31	17606.48	
	N 89°54'20" E	506.50	11995.15	18112.97	
	N 00°11'18" E	429.89	12425.03	18114.39	
	N 89°55'01" E	536.28	12425.81	18650.66	
	S 00°08'03" W	429.78	11996.03	18649.66	
	N 89°54'20" E	506.00	11996.86	19155.66	
	S 00°09'20" W	60.00	11936.86	19155.49	
	S 89°54'20" W	459.94	11936.11	18695.55	
	S 00°11'43" W	828.10	11108.01	18692.73	
	S 89°50'39" W	1971.22	11102.64	16721.52	

Closure Error Distance> 0.0000 Error Bearing> N 90°00'00" E  
 Closure Precision> 1 in 412358886860976.1 Total Distance Inversed> 7500.76

Area: 1734459, 39.8177



SCALE: 1"=500'



PLANNING • SURVEYING

www.ldc-inc.com • TEL: (719) 528-6133 • FAX: (719) 528-6848

3898 MAIZELAND ROAD • COLORADO SPRINGS, CO 80909

DWN BY: JLG

DATE: 5/29/2020

CK'D BY: DLK

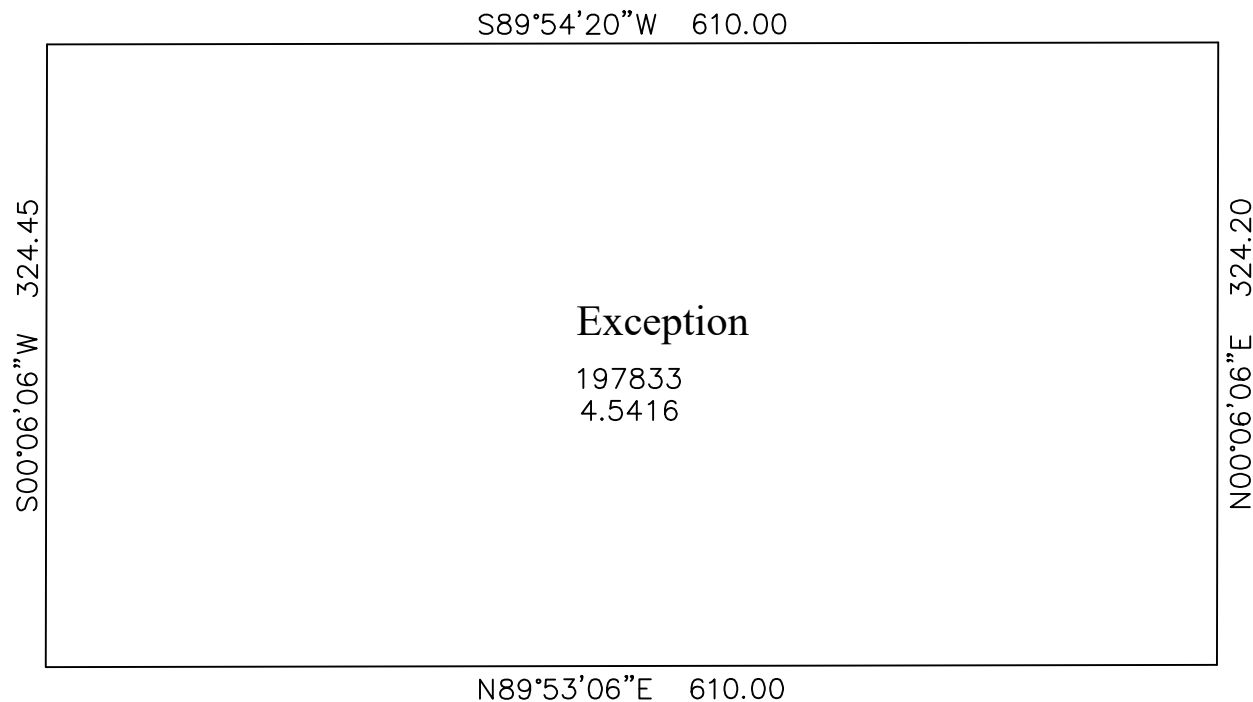
REF. NO.: N/A

REVISIONS

NO.	DESCRIPTION	DATE	BY

PROJECT NUMBER

18070



Inverse With Area

Thu May 28 11:34:55 2020

PntNo	Bearing	Distance	Northing	Easting	Description
			3783.03	17593.79	
	N 00°06'06" E	324.21	4107.24	17594.36	
	S 89°54'20" W	610.00	4106.24	16984.36	
	S 00°06'06" W	324.43	3781.81	16983.79	
	N 89°53'06" E	610.00	3783.03	17593.79	

Closure Error Distance > 0.0000 Error Bearing > N 90°00'00" E  
 Closure Precision > 1 in 839287541558.0 Total Distance Inversed > 1868.64

Area: 197833, 4.5416



SCALE: 1"=100'



PLANNING • SURVEYING

www ldc-inc.com • TEL: (719) 528-6133 • FAX: (719) 528-6848

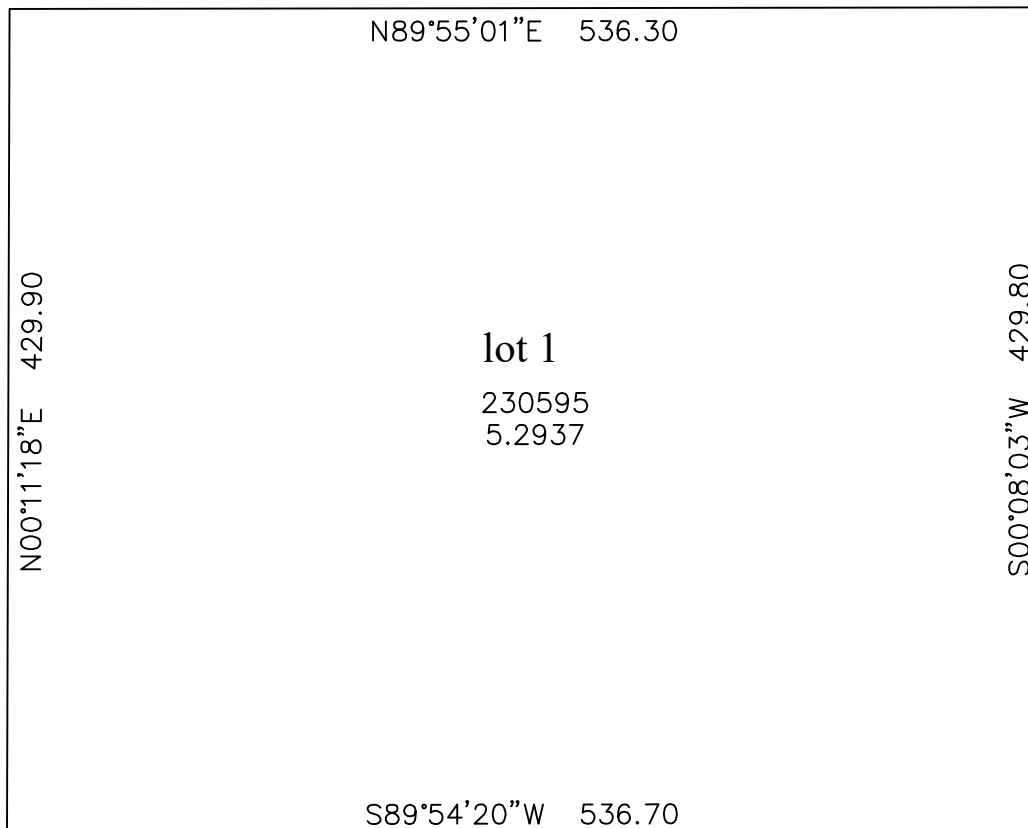
3898 MAIZELAND ROAD • COLORADO SPRINGS, CO 80909

DWN BY: JLG      DATE: 5/29/2020  
 CK'D BY: DLK      REF. NO.: N/A

REVISIONS

NO.	DESCRIPTION	DATE	BY

PROJECT NUMBER  
 18070



Inverse With Area

Thu May 28 11:25:53 2020

PntNo	Bearing	Distance	Northing	Easting	Description
	S 89°54'20" W	536.69	4739.19	17646.83	
	N 00°11'18" E	429.89	4738.30	17110.15	
	N 89°55'01" E	536.28	5168.19	17111.56	
	S 00°08'03" W	429.78	5168.96	17647.84	
			4739.19	17646.83	

Closure Error Distance> 0.0000 Error Bearing> N 90°00'00" E  
 Closure Precision> 1 in 177078789159925.8 Total Distance Inversed> 1932.63

SCALE: 1"=100'

Area: 230595, 5.2937



PLANNING • SURVEYING

www.ldc-inc.com • TEL: (719) 528-6133 • FAX: (719) 528-6848

3898 MAIZELAND ROAD • COLORADO SPRINGS, CO 80909

DWN BY: JLG DATE: 5/29/2020

CK'D BY: DLK REF. NO.: N/A

REVISIONS

NO.	DESCRIPTION	DATE	BY

PROJECT NUMBER

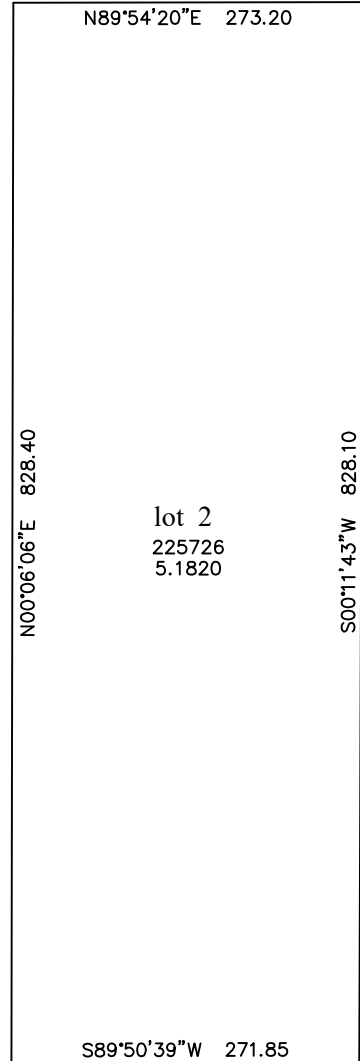
18070

Inverse With Area Thu May 28 11:17:27  
2020

PntNo	Bearing	Distance	Northing	Easting
			7252.44	17573.71
	N 00°06'06" E	828.39	8080.83	17575.18
	N 89°54'20" E	273.21	8081.28	17848.40
	S 00°11'43" W	828.10	7253.18	17845.58
	S 89°50'39" W	271.86	7252.44	17573.71

Closure Error Distance> 0.0000 Error Bearing> N 90°00'00" E  
Closure Precision> 1 in 155927864189742.7 Total Distance  
Inversed> 2201.57

Area: 225726, 5.1820



SCALE: 1"=150'



Land Development Consultants, Inc.

PLANNING • SURVEYING

www.ldc-inc.com • TEL: (719) 528-6133 • FAX: (719) 528-6848

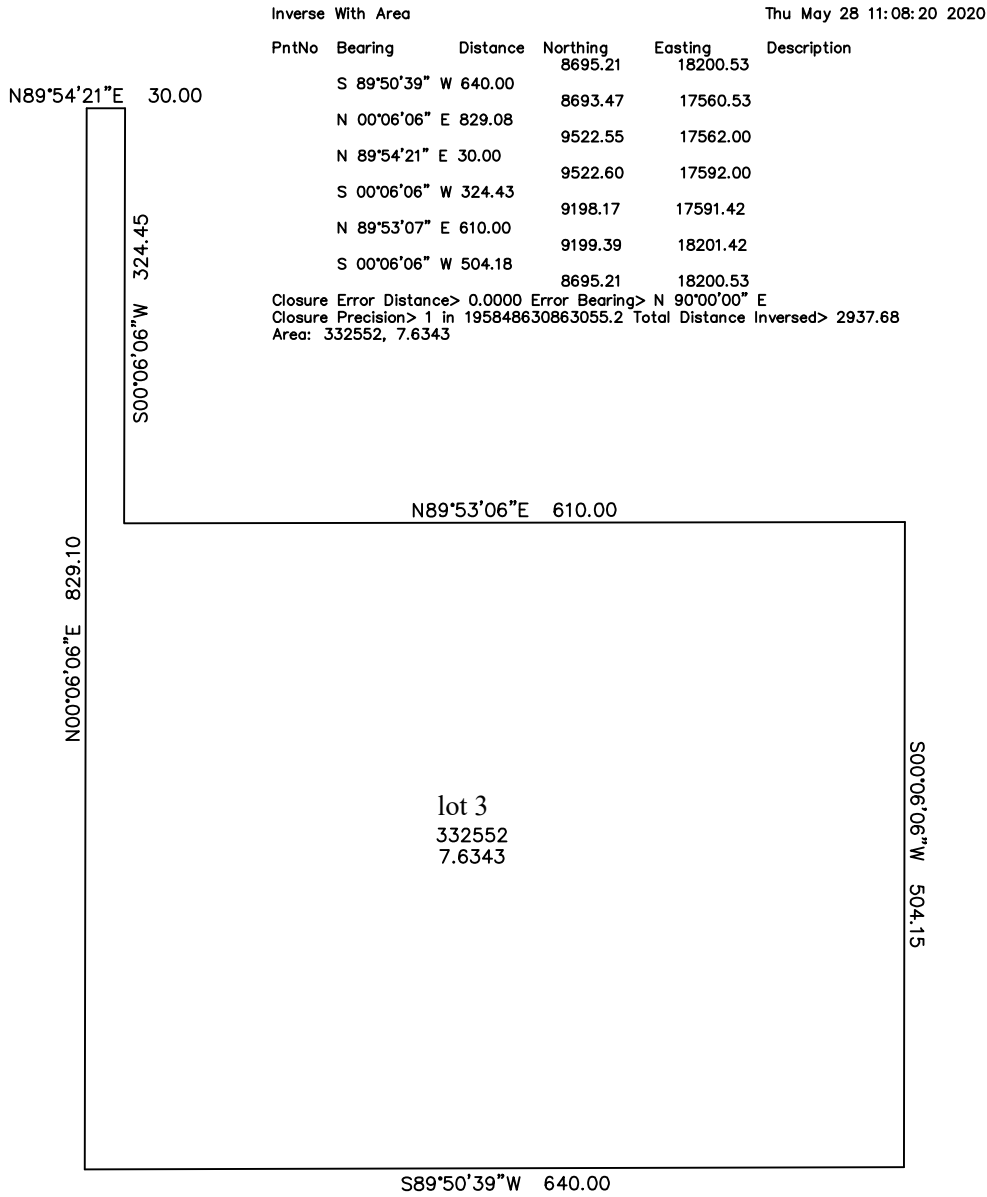
3898 MAIZELAND ROAD • COLORADO SPRINGS, CO 80909

DWN BY: JLG DATE: 5/29/2020  
CK'D BY: DLK REF. NO.: N/A

REVISIONS

NO.	DESCRIPTION	DATE	BY

PROJECT NUMBER  
18070



SCALE: 1"=150'



Land Development Consultants, Inc.

PLANNING • SURVEYING

www.ldc-inc.com • TEL: (719) 528-6133 • FAX: (719) 528-6848

3898 MAIZELAND ROAD • COLORADO SPRINGS, CO 80909

DWN BY: JLG DATE: 5/29/2020

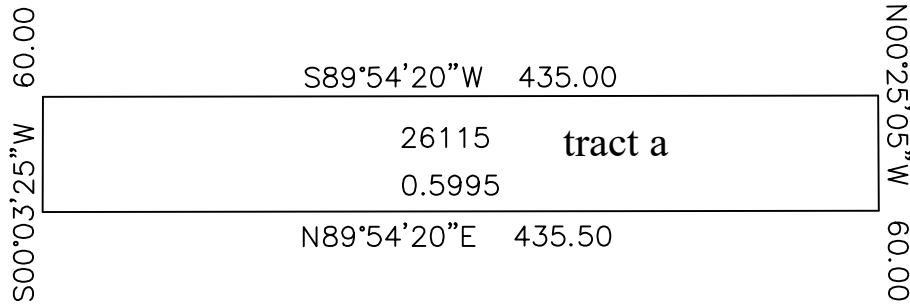
CK'D BY: DLK REF. NO.: N/A

REVISIONS

NO.	DESCRIPTION	DATE	BY

PROJECT NUMBER

18070



Inverse With Area

Thu May 28 11:28:17 2020

PntNo	Bearing	Distance	Northing	Easting	Description
	N 00°25'05" W	60.00	10063.56	16167.77	
	S 89°54'20" W	435.00	10123.56	16167.33	
	S 00°03'25" W	60.00	10122.84	15732.33	
	N 89°54'20" E	435.50	10062.84	15732.27	
			10063.56	16167.77	

Closure Error Distance > 0.0000  
 Total Distance Inversed > 990.50

Area: 26115, 0.5995



SCALE: 1"=100'



PLANNING • SURVEYING

www.ldc-inc.com • TEL: (719) 528-6133 • FAX: (719) 528-6848

3898 MAIZELAND ROAD • COLORADO SPRINGS, CO 80909

DWN BY: JLG DATE: 5/29/2020

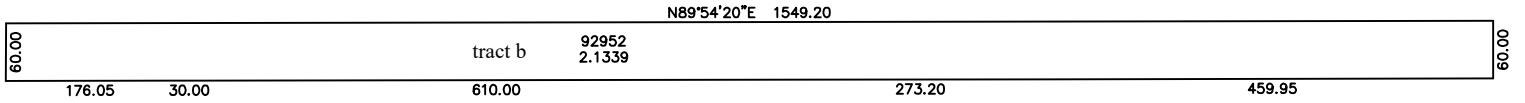
CK'D BY: DLK REF. NO.: N/A

REVISIONS

NO.	DESCRIPTION	DATE	BY

PROJECT NUMBER

18070



Inverse With Area

Thu May 28 11:03:43 2020


PntNo	Bearing	Distance	Northing	Easting	Description
			10080.66	16721.07	
	N 89°54'21" E	176.06	10080.95	16897.14	
	N 89°54'21" E	30.00	10081.00	16927.14	
	N 89°54'20" E	610.00	10082.00	17537.13	
	N 89°54'20" E	273.21	10082.45	17810.35	
	N 89°54'20" E	459.94	10083.21	18270.29	
	N 00°09'20" E	60.00	10143.21	18270.45	
	S 89°54'20" W	1549.18	10140.66	16721.27	
	S 00°11'21" W	60.00	10080.66	16721.07	



Closure Error Distance > 0.0007 Error Bearing > S 00°11'21" W  
 Closure Precision > 1 in 4382810.1 Total Distance Inversed > 3218.40

Area: 92952, 2.1339

SCALE: 1"=200'

 <p>Land Development Consultants, Inc.                  PLANNING • SURVEYING                  www.ldc-inc.com • TEL: (719) 528-6133 • FAX: (719) 528-6848                  3898 MAIZELAND ROAD • COLORADO SPRINGS, CO 80909</p>	REVISIONS			
	NO.	DESCRIPTION	DATE	BY
DWN BY: JLG      DATE: 5/29/2020 CK'D BY: DLK      REF. NO.: N/A	PROJECT NUMBER 18070			



lot 4  
654800  
15.0322



SCALE: 1"=200'

Inverse With Area Thu May 28 11:23:26 2020

PntNo	Bearing	Distance	Northing	Easting	Description
	S 89°55'03" W	434.32	6162.78	17256.86	
	S 00°03'25" W	314.40	6162.16	16822.54	
	N 89°50'39" E	1059.35	5847.75	16822.23	
	N 00°06'06" E	829.08	5850.64	17881.58	
	S 89°54'21" W	176.06	6679.71	17883.05	
	S 89°54'20" W	448.44	6679.42	17706.99	
	S 00°11'18" W	515.91	6678.68	17258.55	
			6162.78	17256.86	

Closure Error Distance> 0.0000 Error Bearing> N 90°00'00" E  
 Closure Precision> 1 in 1038366028223306.5 Total Distance Inversed> 3777.55  
 Area: 654800, 15.0322



PLANNING • SURVEYING

www.ldc-inc.com • TEL: (719) 528-6133 • FAX: (719) 528-6848

3898 MAIZELAND ROAD • COLORADO SPRINGS, CO 80909

DWN BY: JLG	DATE: 5/29/2020
CK'D BY: DLK	REF. NO.: N/A

REVISIONS

NO.	DESCRIPTION	DATE	BY

PROJECT NUMBER

18070