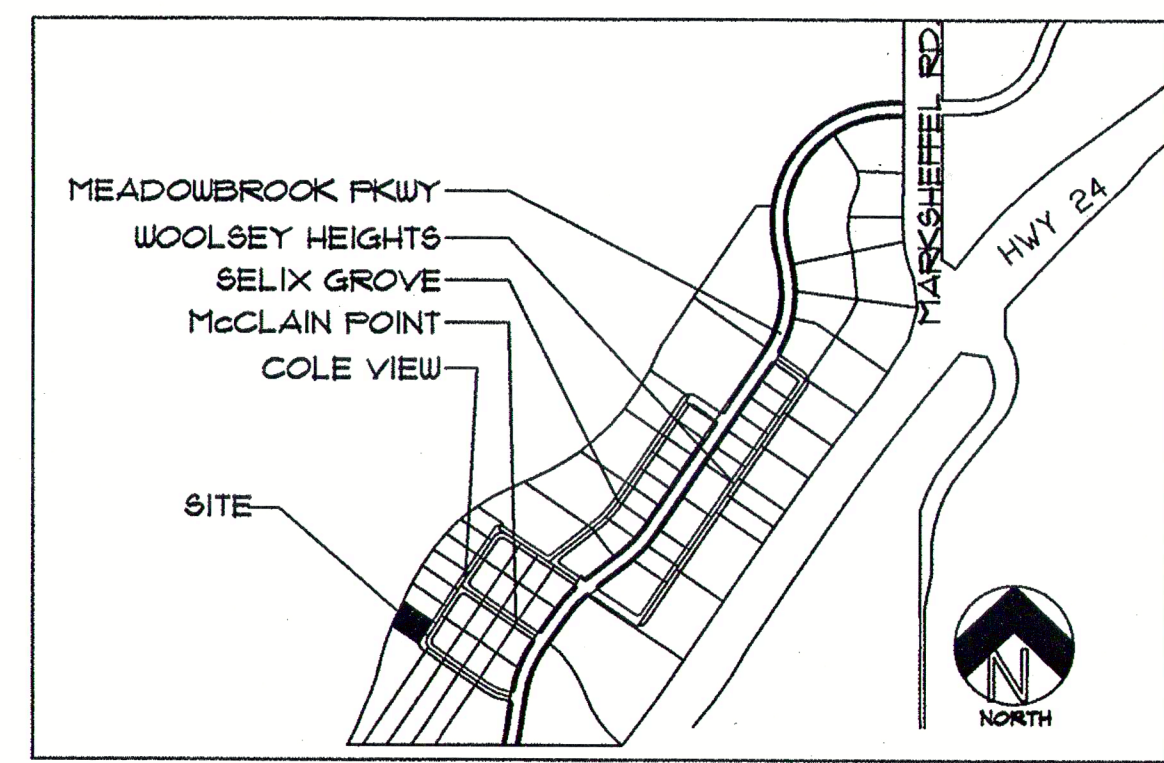


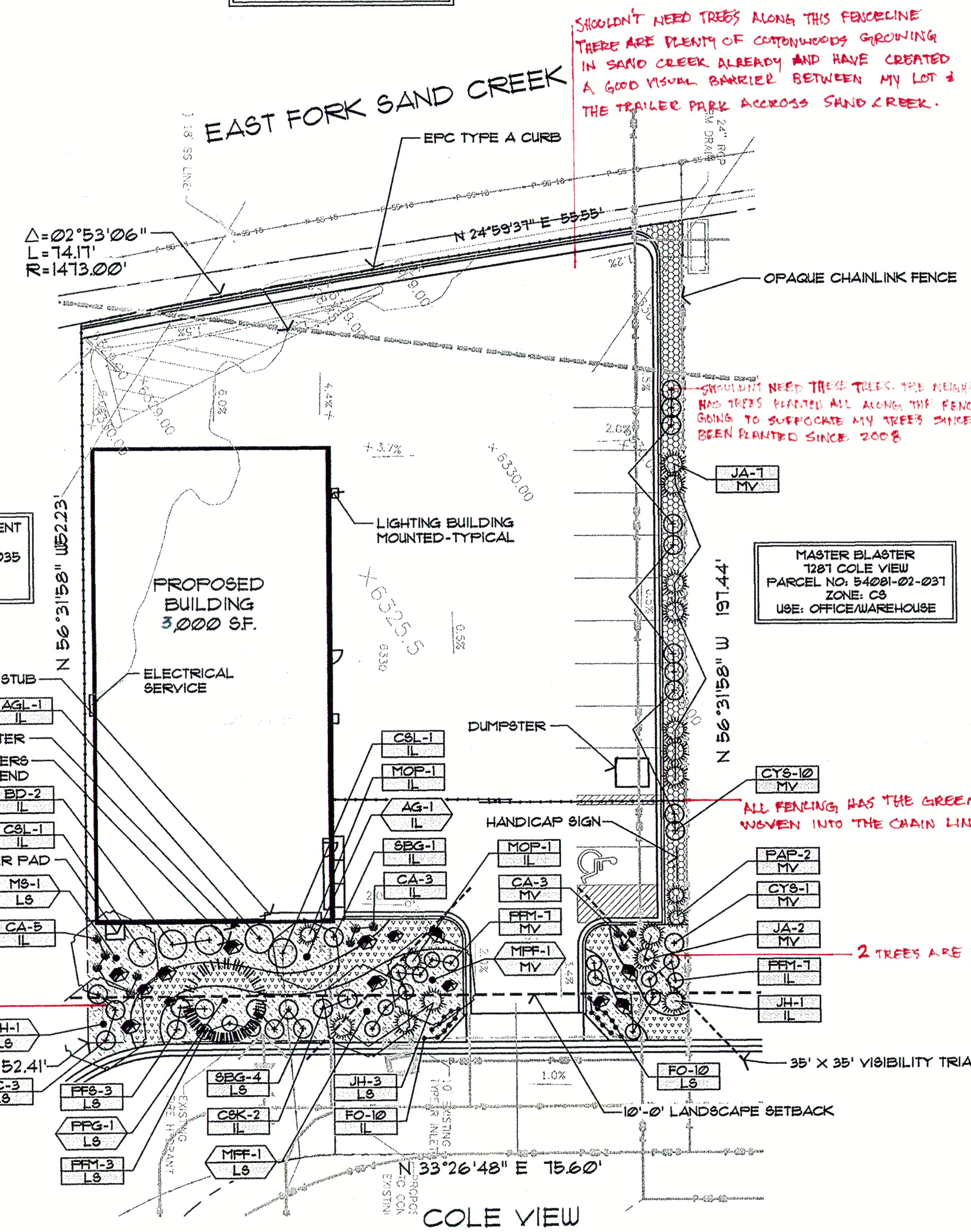
SPRINGS HOME MOBILE PARK
1095 WESTERN DRIVE
PARCEL NO. 54000-03-013
ZONE: MHP
USE: MOBIL HOME PARK



VICINITY MAP

General Notes

Revision/Issue	Date
PER DESIGN CHANGES	8/31/07
PER COMMENTS	10/9/07

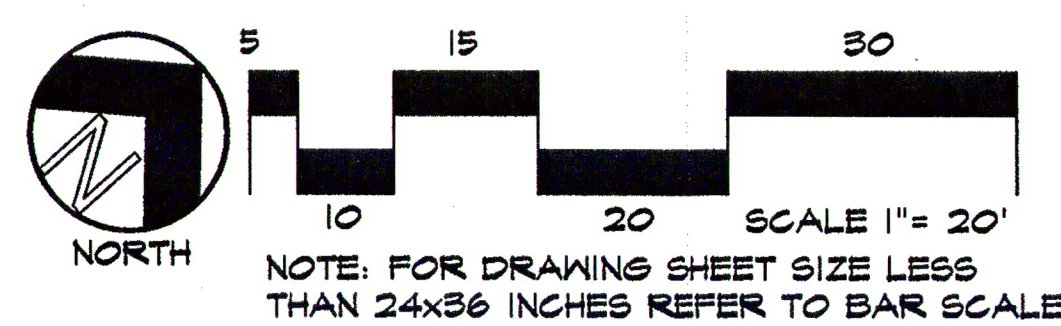


CLAREMONT DEVELOPMENT
1315 COLE VIEW
PARCEL NO. 54001-02-035
ZONE: C9
USE: VACANT

MASTER BLASTER
1281 COLE VIEW
PARCEL NO. 54001-02-031
ZONE: C9
USE: OFFICE/WAREHOUSE

CLAREMONT DEVELOPMENT
1330 COLE VIEW
PARCEL NO. 54001-02-016
ZONE: C9
USE: VACANT

FINAL LANDSCAPE PLAN



SHOULDN'T NEED TREES ALONG THIS FENCELINE
THERE ARE PLENTY OF COTONWOODS GROWING
IN SAND CREEK ALREADY AND HAVE CREATED
A GOOD VISUAL BARRIER BETWEEN MY LOT &
THE TRAILER PARK ACROSS SAND CREEK.

SHOULDN'T NEED TREES ALONG THIS FENCELINE
THERE ARE PLENTY OF COTONWOODS GROWING
IN SAND CREEK ALREADY AND HAVE CREATED
A GOOD VISUAL BARRIER BETWEEN MY LOT &
THE TRAILER PARK ACROSS SAND CREEK.

ALL FENCING HAS THE GREEN OPAQUE PIECES
WOVEN INTO THE CHAIN LINK.

2 TREES ARE PRESENT

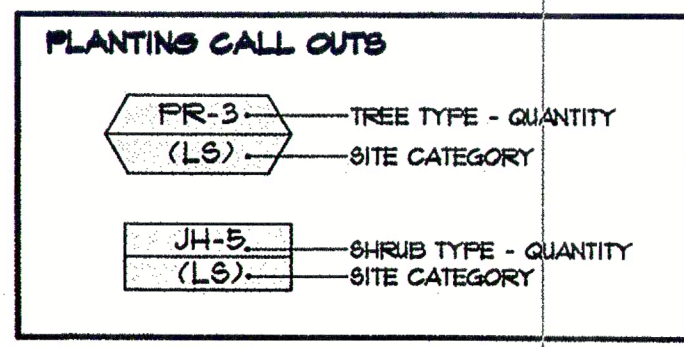
7 TREES ARE PRESENT

PLANT SCHEDULE

Symbol	Abbr.	Botanical Name	Common Name	Key from Appendix B	Mature W/H	Planting Size	Notes
EVERGREEN TREES:							
	PPG	<i>Picea pungens glauca</i> 'Fat Albert'	Fat Albert Spruce	8A	12 x 8'	6' ht.	B/B
DECIDUOUS TREES:							
	AG	<i>Anelachne x grand</i> 'Aut. Brilliance'	Autumn Brilliance Serviceberry	45/180	15'	1-1/2' cal.	B/B ORN
	CH	<i>Crataegus crataegifolia</i>	Cockspur Hawthorn	28'	20'	1-1/2' cal.	B/B
	MFF	<i>Morus 'Prairie Fire'</i>	Prairie Fire Crabapple	46/18	20'	1-1/2' cal.	B/B
	MB	<i>Morus 'Spring Snow'</i>	Spring Snow Crabapple	46/18	15'	1-1/2' cal.	ORN
EVERGREEN SHRUBS:							
	JA	<i>Juniperus chinensis</i> 'Armstrong'	Armstrong Juniper	DA	3-4' / 3-4'	5 gal.	Cont.
	JH	<i>Juniperus horizontalis</i>	Blue Chip Juniper	2568A	3-5' / 8-10'	5 gal.	P8/MV P8/VT
	MOP	<i>Pinus mugo</i> 'Mops'	Dwarf Mopple Mugho	185	2' / 3'	5 gal.	P8
	PAP	<i>Ficus alia</i> 'Pumila'	Dwarf Norway Spruce	D	3' / 3'	5 gal.	P8
DECIDUOUS SHRUBS:							
	AGL	<i>Acer ginnale</i> 'Compacta'	Compact Amur Maple	45TA	6-8' / 6-8'	5 gal.	Cont.
	BD	<i>Buddleia davidii</i> 'Empire Blue'	Butterfly Bush-Empire Blue	AD	4' / 6'	5 gal.	P8
	CC	<i>Caryopteris x clandonensis</i> 'Dark Knight'	Dark Knight Blue Mist Spirea	1235A	2' / 2-3'	5 gal.	P8
	CSK	<i>Cornus Stolonifera</i> 'Kalsweg'	Kalsweg Dogwood	A	2' / 2-3'	5 gal.	P8
	CBL	<i>Cytisus scoparius</i> 'Lilac Time'	Lilac Time Broom	D	6' / 6'	5 gal.	P8/SH
	CYS	<i>Cytisus scoparius</i> 'Lana'	Lana Broom	D	3-4'	5 gal.	P8/SH
	FRF	<i>Potentilla fruticosa</i> 'Tango Tango'	Tango Tango Potentilla	S	2' / 2'	5 gal.	P8
	FRB	<i>Potentilla fruticosa</i> 'Sutton's Gold'	Sutton's Gold	S	2' / 3'	5 gal.	P8
	SBG	<i>Spiraea x brunsdella</i> 'Goldflame'	Goldflame Spirea	8A	3-4' / 2-3'	5 gal.	P8
ORNAMENTAL GRASSES:							
	CA	<i>Calamagrostis acutiflora</i> 'Karl Foerster'	Feather Reed Grass	A	18-24"	1 gal.	P8
	FO	<i>Festuca ovina</i> 'Glauca'	Blue Fescue	23568D	1' / 1'	1 gal.	P8/VT

GROUND COVER LEGEND

SYMBOL	DESCRIPTION	APPROX. SF
	Blue/Gray River Rock Cobble 2-14" Diameter	139 SF
	Denver Granite Decorative Rock 1-1/2" Diameter	601 SF
	Organic Mulch 3" - See Notes	1,958 SF
	Decorative Broadmoor Boulders: 18-30" Diameter Varies See Plan	



PROJECT DATA

Property Area: 22,136 SF
Parking Stalls: 10
Zoning: C9
Landscape Area: 3,300 SF
Building: 5,000 SF

BEAR CLAW
7301 COLE VIEW
CLAREMONT BUSINESS PARK LOT 32-2
EL PASO COUNTY, COLORADO SPRINGS, CO 80915

CLIENT:
HAMMERS CONSTRUCTION

ALL AMERICAN LANDSCAPE, INC.
LANDSCAPE ARCHITECTURE & IRRIGATION DESIGN
RESIDENTIAL & COMMERCIAL LANDSCAPE INSTALLATION

1025 ABERDEEN DRIVE
COLORADO SPRINGS, CO 80916
719-437-0313

Drawn by: JM
Date: 2/28/07
Scale: AS NOTED

Sheet: 2 of 7

NOT FOR CONSTRUCTION (FOR APPROVAL ONLY) FOR CONSTRUCTION

COUNTY FILE NO. PPR-07-007

AAL-1141-07