

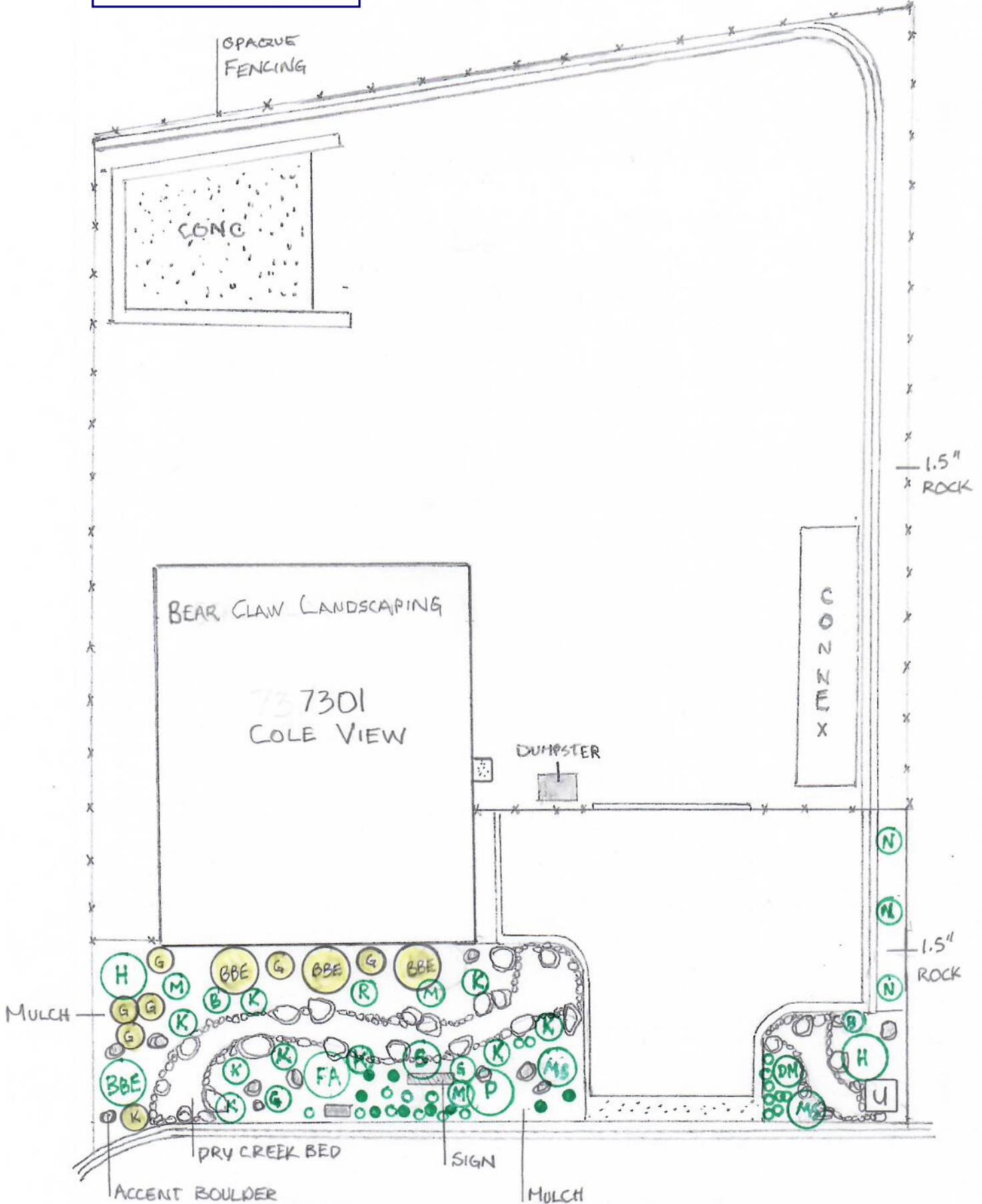
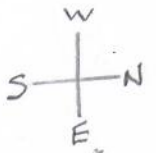
1" = 20'

EAST SAND CREEK

Approved

By: *Justin Kilgore*
Planning Manager
Date: 12/16/2024

El Paso County Planning & Community Development



ACTUAL PLANT LEGEND ON SITE

- MAY NIGHT SALVIA (9)
- STELLA DAYLILY (19)
- Ⓡ RED TWIG DOGWOOD (1)
- Ⓜ MOPPS MUGO (3)
- Ⓚ FEATHER REED GRASS (9)
- Ⓟ BLUE MIST SPIREA (2)
- ⓐ GOLDFLAME SPIREA (2)
- Ⓝ NEON FLASH SPIREA (3)

- Ⓢ DWARF MUGO (1)

- Ⓟ PRAIRIE FIRE CRAB TREE (2)
- Ⓢ SPRING SNOW CRAB TREE (1)
- Ⓜ MULTI STEM RUSSIAN HAWTHORN TREE (2)
- Ⓜ MS MONTGOMERY SPRUCE TREE (2)
- ⓕ FAT ALBERT SPRUCE TREE (2)
- Ⓟ BBE BABY BLUE EYES SPRUCE TREE (1)

NOTES - REFER TO PLAN: WE WILL ADD (3) BABY BLUE EYES SPRUCE (6) GOLDFLAME SPIREA, (1) FEATHER REED GRASS IN THE LANDSCAPE EASEMENT. THE WEST SIDE OF THE PROPERTY NEEDS NO TREES BECAUSE OF THE VAST AMOUNT OF COTONWOOD TREES ALREADY PRESENT IN SAND CREEK. NOT TO MENTION, NOT ONE OTHER BUILDING IN THE PARK HAS TREES AT THE REAR OF THE PROPERTY. THE NEIGHBORING PROPERTY ON THE NORTH ALREADY HAS TREES ALONG THE FENCELINE WHICH WILL CANOPY & SUFFOCATE ANYTHING I WOULD PLANT ON MY SIDE. LOOKING AT BUILDINGS IN THE PARK, TREES/SHRUBS ARE PLANTED AT EVERY OTHER BUILDING

THROUGHOUT THE PARK WHICH DIRECTLY INDICATES THAT
MY LOT WOULD NOT NEED TREES/SHRUBS ALONG THE NORTH
PROPERTY LINE TO REMAIN CONSISTENT WITH THE OVERALL
PARK LANDSCAPE PLAN. I AM WILLING TO ADD MORE PLANT
MATERIAL IN THE FRONT LANDSCAPE EASEMENT TO
ACCOMMODATE THE ORGANIC SQUARE FOOTAGE YOU SPOKE OF.

THANK YOU,

Ray Smith