

QUICK QUACK CAR WASH | PROPOSED SIGNAGE | WALL SIGN

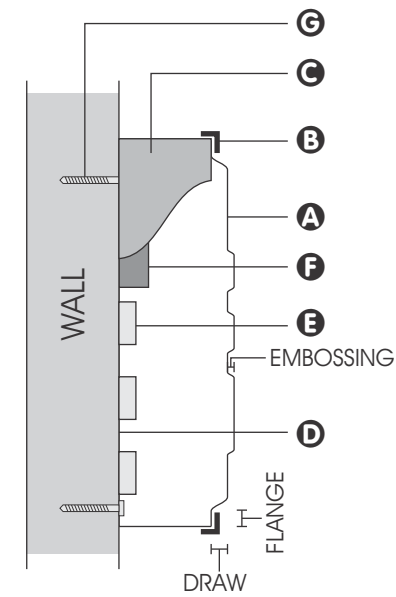
MANUFACTURE AND INSTALL

(2) SETS OF FRONT LIT WALL SIGNS WITH VACUUM-FORMED FACES

- A FACES: 3/16" CLEAR PLEX, VACUUM-FORMED WITH VINYL AND PAINTED GRAPHICS ON 2ND SURFACE
- B RETAINERS: ALL ALUMINUM, 2" PAINTED WHITE
- C RETURNS: ALL ALUMINUM 8" DEEP, PAINTED WHITE
- D BACKS: ALL ALUMINUM STOCK COLOR
- E ILLUMINATION: WHITE LEDs
****CANNOT EXCEED 2 FT CANDLES AS MEASURED 1 FT. FROM THE SURFACE OF THE SIGN****
- F POWER SUPPLY: HOUSED IN SIGN CABINET
- G FLUSH MOUNTED TO FASCIA (SEE ATTACHMENT DETAIL)

- DISCONNECT SWITCH AT SIGN
- 120V SERVICE SUPPLIED BY OTHERS

POWER REQUIREMENTS PROVIDED BY OTHERS
(1) 20 AMP CIRCUIT
120 VOLTS



TYPICAL SECTION VIEW

NTS

A separate sign permit will be required, please inform the planner if you will also will be applying for the sign permit so I can create the project

-  PMS 3425, 3M EMERALD GREEN 230-126
-  PMS 7404, 3M YELLOW 230015
-  PMS ORANGE 021, 3M ORANGE 230-44
-  PMS BLACK, 3M BLACK 230-22



A1 PRIMARY SIGNAGE



PROPOSED LAYOUT

SCALE: 1/2" = 1'-0"

PROPOSED SIGNAGE = 113.33 SF

QUICK QUACK CAR WASH | PROPOSED SIGNAGE | WALL SIGN

MANUFACTURE AND INSTALL

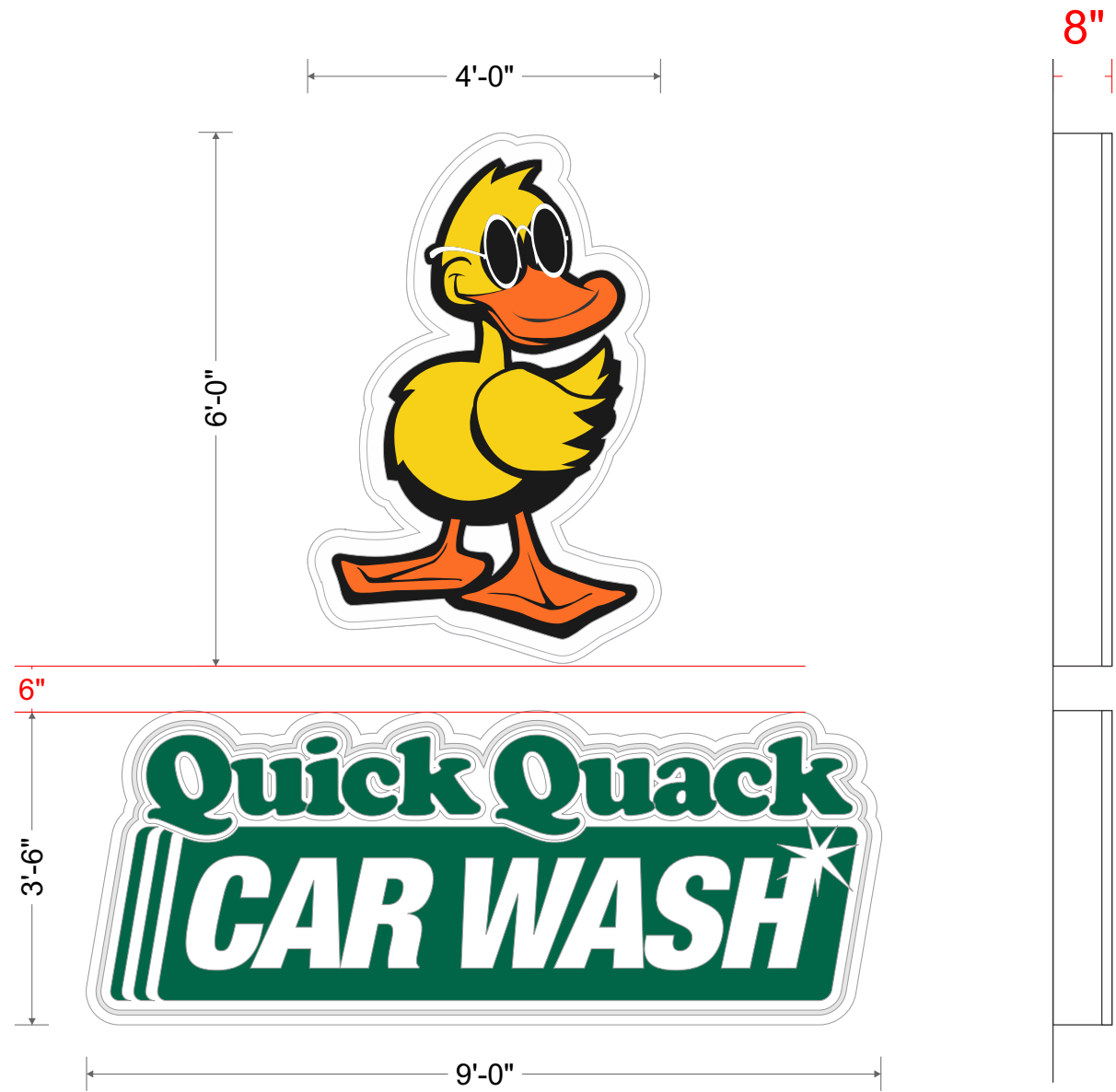
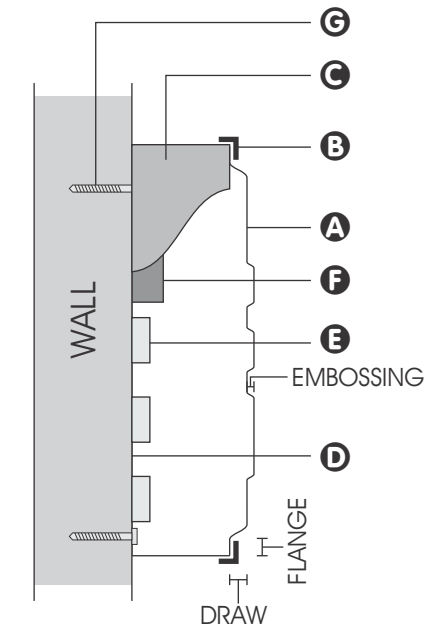
(1) SET OF NON-ILLUMINATED WALL SIGNS WITH VACUUM-FORMED FACES

(1) SET OF ILLUMINATED WALL SIGNS WITH VACUUM-FORMED FACES

- A FACES: 3/16" CLEAR PLEX, VACUUM-FORMED WITH VINYL AND PAINTED GRAPHICS ON 2ND SURFACE
- B RETAINERS: ALL ALUMINUM, 2" PAINTED WHITE
- C RETURNS: ALL ALUMINUM 8" DEEP, PAINTED WHITE
- D BACKS: ALL ALUMINUM STOCK COLOR
- E ILLUMINATION: WHITE LEDs
- F POWER SUPPLY: HOUSED IN SIGN CABINET
- G FLUSH MOUNTED TO FASCIA (SEE ATTACHMENT DETAIL)

- DISCONNECT SWITCH AT SIGN
- 120V SERVICE SUPPLIED BY OTHERS

POWER REQUIREMENTS PROVIDED BY OTHERS
(1) 20 AMP CIRCUIT
120 VOLTS



B1 SECONDARY SIGNAGE
NOT ILLUMINATED

B2 SECONDARY SIGNAGE

- PMS 3425, 3M EMERALD GREEN 230-126
- PMS 7404, 3M YELLOW 230015
- PMS ORANGE 021, 3M ORANGE 230-44
- PMS BLACK, 3M BLACK 230-22

PROPOSED LAYOUT

SCALE: 1/2" = 1'-0"

PROPOSED SIGNAGE = 55.50 SF

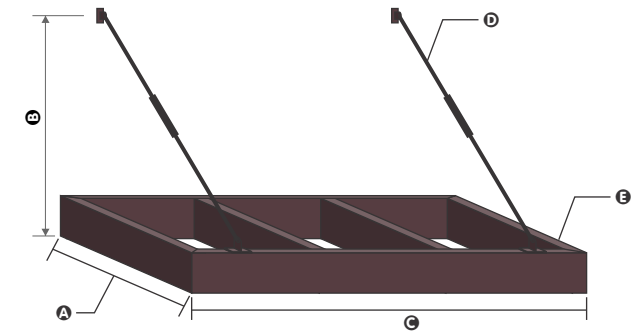
QUICK QUACK CAR WASH | PROPOSED SIGNAGE | METAL CANOPIES

MANUFACTURE AND INSTALL

(4) SUSPENDED METAL CANOPIES

- A PROJECTION: (4) @ 4'-0"
- B DROP: (2) @ 3'-8", (2) @ 7'-0"
- C WIDTH: (4) @ 23'-4"
- D TURNBUCKLE AND RODS, PAINTED P1
- E CANOPY FRAME: 2"x12" ALL ALUMINUM CONSTRUCTION, PAINTED P1

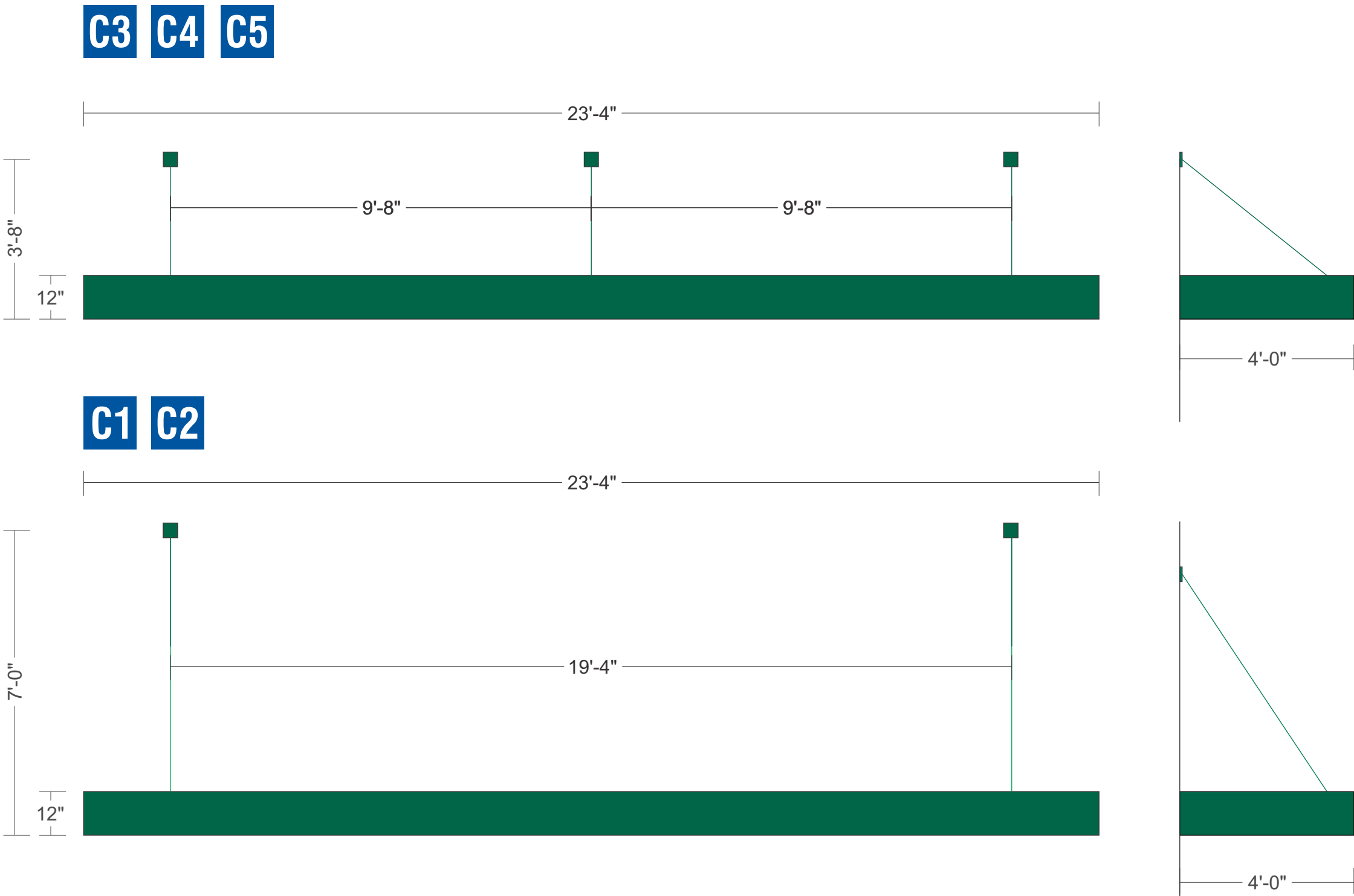
PAINT TO MATCH SW 6755
"STARBOARD" GREEN



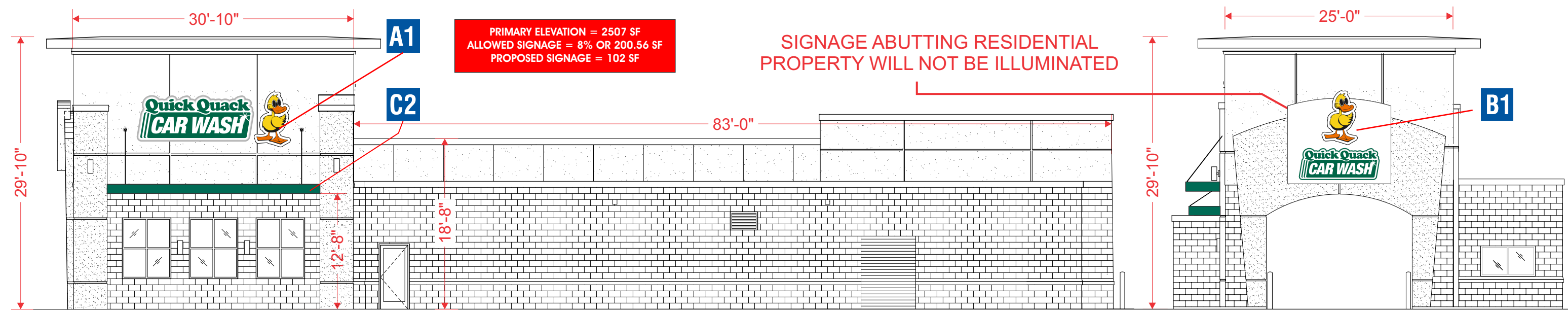
TYPICAL METAL AWNING
NTS (FINAL FRAMING MAY VARY)

PROPOSED LAYOUT

SCALE: 3/8" = 1'-0"

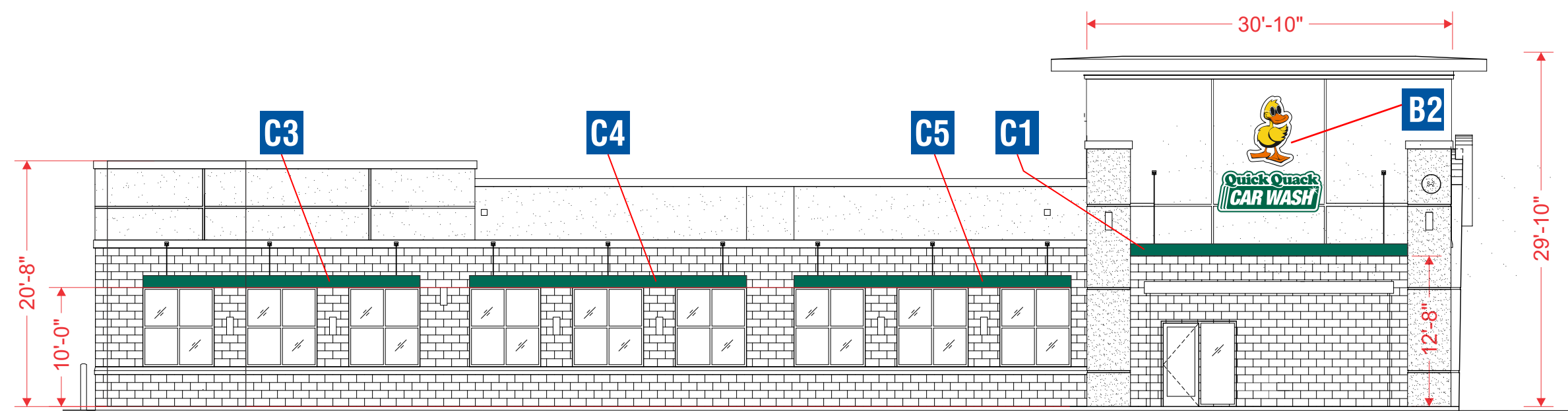


QUICK QUACK CAR WASH | PROPOSED SIGNAGE | ELEVATIONS



PRIMARY ELEVATION
SCALE: 3/32"=1'-0"

SECONDARY ELEVATION
SCALE: 3/32"=1'-0"



B1 SECONDARY ELEVATION
ALLOWED SIGNAGE = 56.65 SF
PROPOSED SIGNAGE = 55.50 SF

B1 SECONDARY ELEVATION
ALLOWED SIGNAGE = 56.65 SF
PROPOSED SIGNAGE = 55.50 SF

SECONDARY ELEVATION
SCALE: 3/32"=1'-0"

QUICK QUACK CAR WASH | PROPOSED SIGNAGE | MONUMENT SIGN

MANUFACTURE AND INSTALL

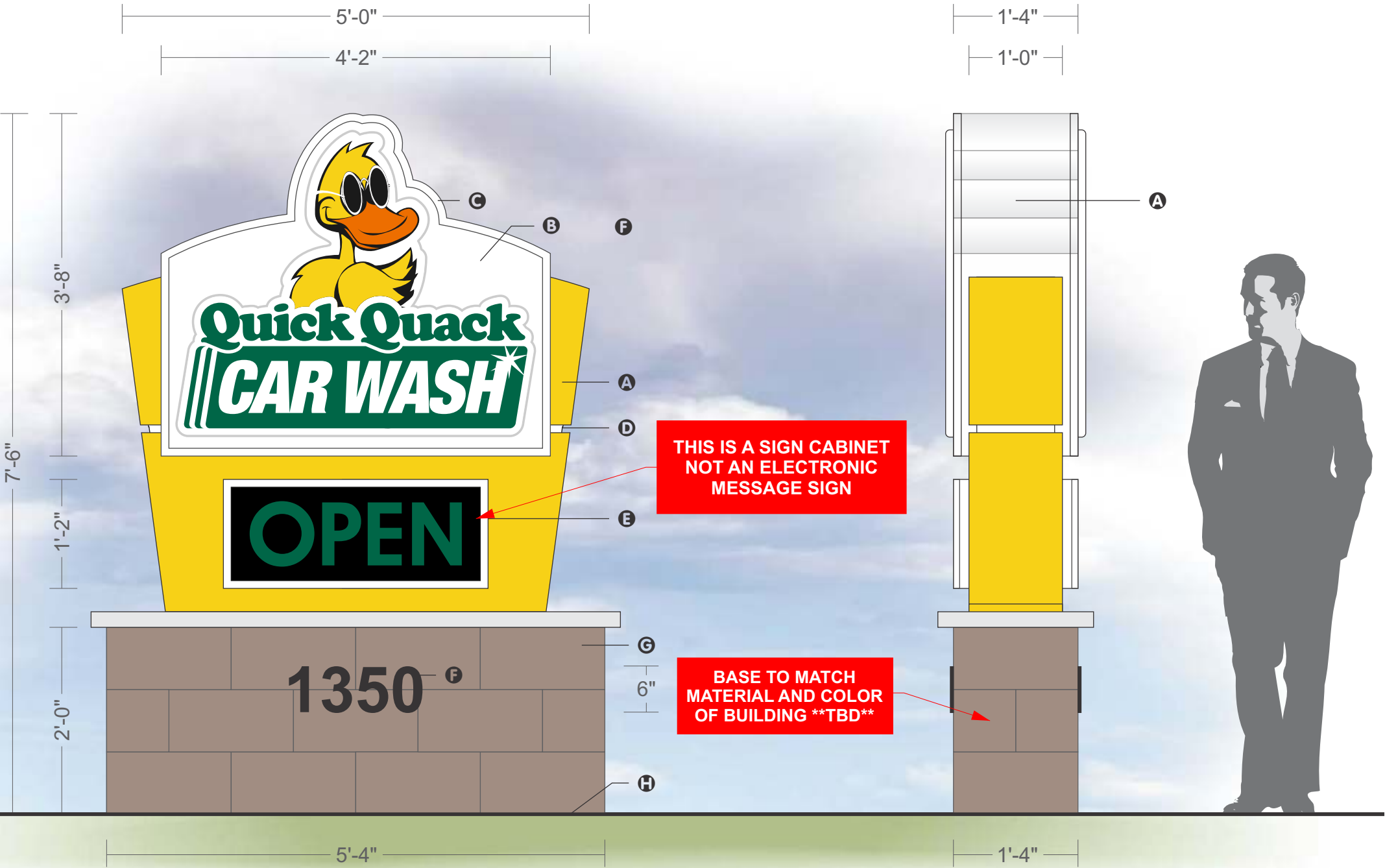
(1) D/F MONUMENT SIGN

- A MAIN SIGN BODY: ALL ALUMINUM CONSTRUCTION, PAINTED P1-P2
- B FACES: 3/16" CLEAR PLEX, VACUUM-FORMED WITH VINYL AND PAINTED GRAPHICS ON 2ND SURFACE
- C RETAINERS: 1" .090 ALUMINUM" PAINTED P2
- D REVEAL: 1" PAINTED WHITE
- E "OPEN" SIGN: ALL ALUMINUM CONSTRUCTION, 3/16" TRANS WHITE SG PLEX WITH VINYL GRAPHICS APPLIED
- F ADDRESS: 1/4" FCO ALUMINUM PAINTED BLACK
- G STONE BASE: ****TO MATCH BUILDING**** INSTALLED BY 3RD PARTY
- H MOW PAD: CONC. 3" ABOVE GRADE

- INTERNALLY ILLUMINATED WITH WHITE LEDs
- ****CANNOT EXCEED 2 FT CANDLES AS MEASURED 1 FT. FROM THE SURFACE OF THE SIGN****
- POWER SUPPLY HOUSED IN SIGN BODY
- SUPPORT AND FOOTING (TBD)
- DISCONNECT SWITCH AT SIGN
- 120V SERVICE SUPPLIED BY OTHERS
- ELECTRICAL SWEEP BY OTHERS
- ELECTRICAL GROUNDED TO PIPE SUPPORT

-  PMS 3425, 3M EMERALD GREEN 230-126
-  PMS 7404, 3M YELLOW 230015
-  PMS ORANGE 021, 3M ORANGE 230-44
-  PMS BLACK, 3M BLACK 230-22

PROPOSED SIGNAGE = 25 SQ.FT.

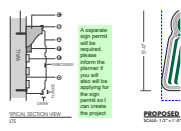


PROPOSED LAYOUT

SCALE: 3/4"=1'-0"

Markup Summary

dsdseigny (1)



Subject: Text Box
Page Label: 1
Lock: Locked
Author: dsdseigny
Date: 2/22/2019 12:54:47 PM
Color:

A separate sign permit will be required, please inform the planner if you will also will be applying for the sign permit so I can create the project