

BUCHER
DESIGN STUDIO

architecture • planning
12325 Oracle Blvd, Suite 101
Colorado Springs, CO 80921
(719) 484-0480

Brian K. Bucher, AIA
Architect
CO license no. C-4889

ELEVATION KEYED NOTES	
1	STANDING SEAM METAL ROOF SYSTEM
2	EXTERIOR PLASTER FINISH OVER RIGID INSULATION AND PLYWOOD SHEATHING
3	VERTICAL METAL SIDING, FACTORY FINISH
4	HOLLOW METAL DOORS IN HOLLOW METAL FRAME, PRIMED AND PAINTED
5	STOREFRONT WINDOW SYSTEM - ANODIZED ALUMINUM FRAME WITH THERMAL BREAK AND INSULATED, CLEAR GLASS
6	GUTTER AND DOWNSPOUTS (# AND LOCATIONS TBD) DRAIN AWAY FROM BUILDING. PROVIDE SPLASH BLOCK OR RIP RAP EROSION PROTECTION.

A NEW
BUILDING
FOR

WIDEFIELD
COMMUNITY
BIBLE CHURCH

702 QUEBEC ST
COLORADO SPRINGS, CO 80911

Sheet Title:
EXTERIOR
ELEVATIONS

Drawing Status:
SDP SUBMITTAL

NOT FOR CONSTRUCTION

Revisions:			
No.	Description	By	Date
1			

All ideas, designs, arrangements and plans indicated or represented by this drawing are owned by and the property of BUCHER DESIGN STUDIO and were created, evolved and developed for use on and in conjunction with the specified project. None of such ideas, designs, arrangements or plans shall be used by, or disclosed to any person, firm or corporation for any purpose whatsoever without the written permission of BUCHER DESIGN STUDIO.

Date: 9/30/24

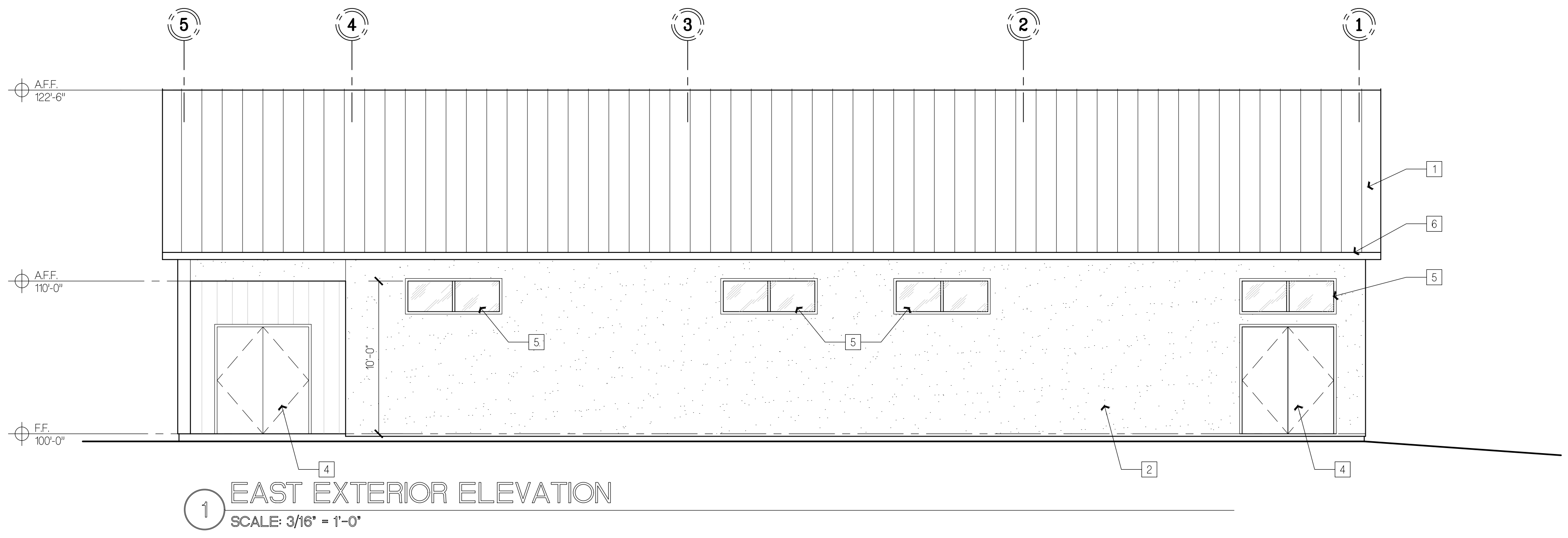
Drawn by:

Checked by:

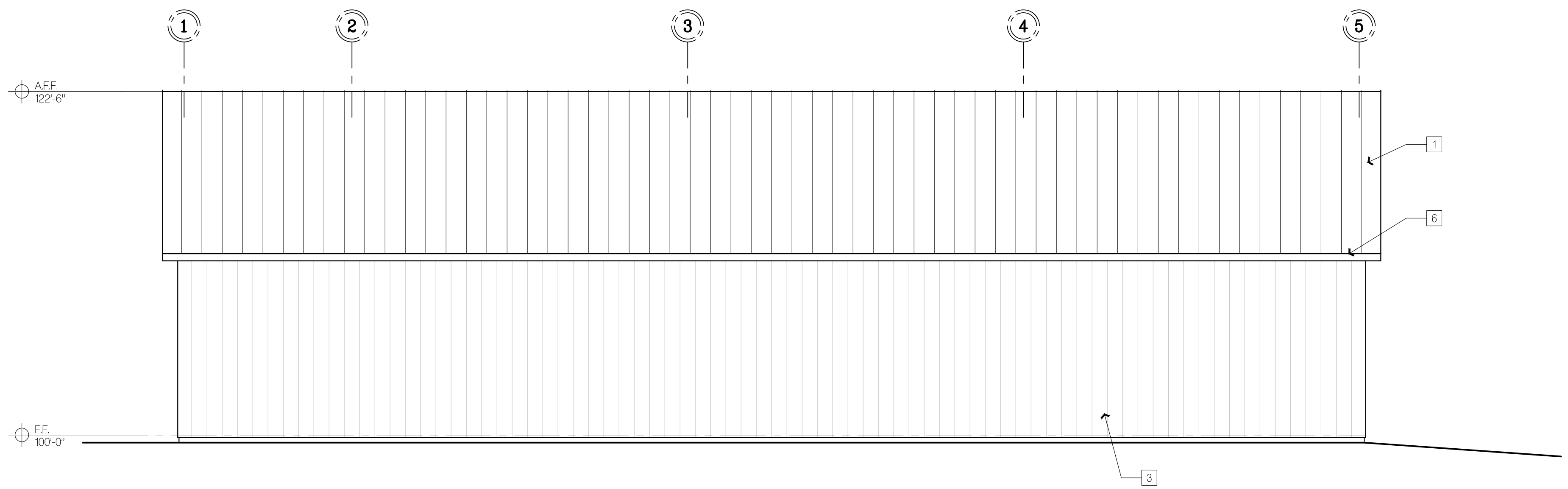
Scale: AS NOTED

Job No.:

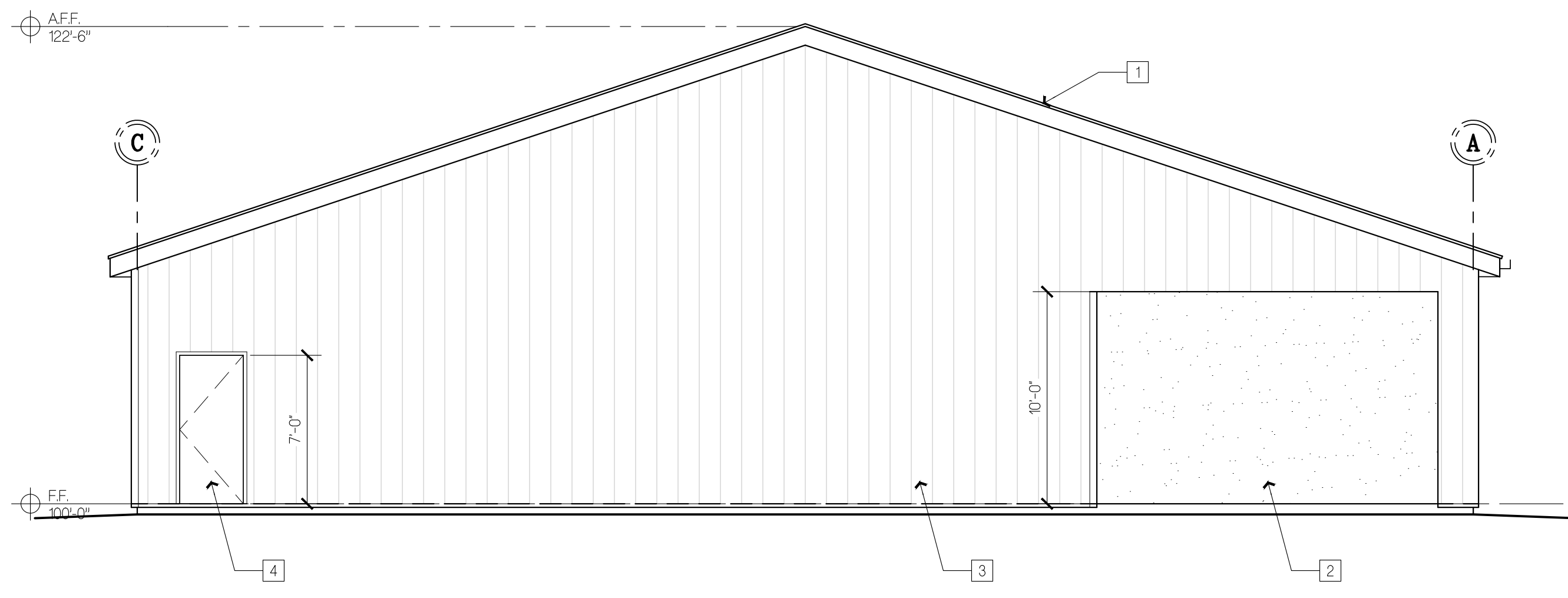
Sheet No.:
A3.1
Of



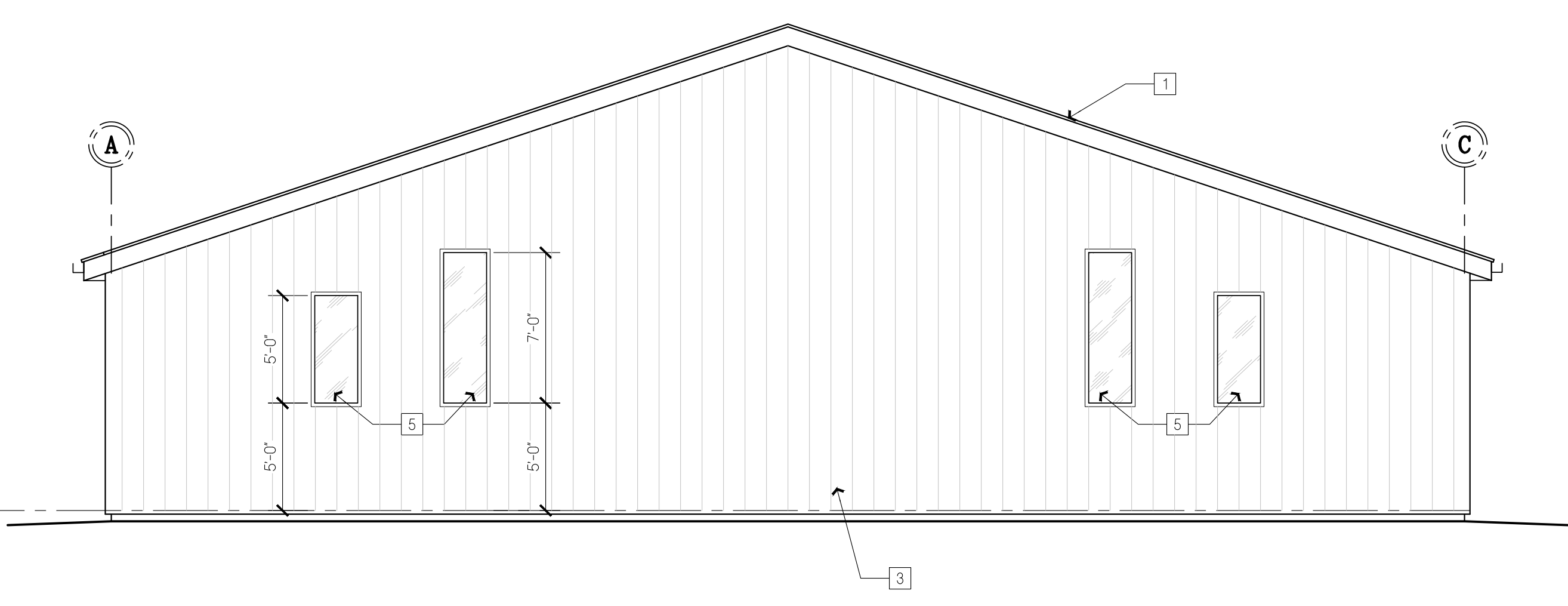
1 EAST EXTERIOR ELEVATION
SCALE: 3/16" = 1'-0"



2 WEST EXTERIOR ELEVATION
SCALE: 3/16" = 1'-0"



3 SOUTH EXTERIOR ELEVATION
SCALE: 3/16" = 1'-0"



4 NORTH EXTERIOR ELEVATION
SCALE: 3/16" = 1'-0"