

BUCHER
DESIGN STUDIO

architecture • planning
12325 Oracle Blvd, Suite 101
Colorado Springs, CO 80921
(719) 484-0480

Brian K. Bucher, AIA
Architect
CO license no. C-4889

A NEW
BUILDING
FOR

WIDEFIELD
COMMUNITY
BIBLE CHURCH

700 QUEBEC ST
COLORADO SPRINGS, CO 80911

Sheet Title:
SITE
SIGN PLAN

Drawing Status:
SDP SUBMITTAL

NOT FOR CONSTRUCTION

Revisions:

No.	Description	By	Date
1	COUNTY COMMENT REVISIONS	JS	12/6/24

△

All ideas, designs, arrangements and plans indicated or represented by this drawing are owned by and the property of BUCHER DESIGN STUDIO and were created, evolved and developed for use on, and in conjunction with, the specified project. None of such ideas, designs, arrangements or plans shall be used by, or disclosed to any person, firm or corporation for any purpose whatsoever without the written permission of BUCHER DESIGN STUDIO.

Date: 10/18/24

Drawn by:

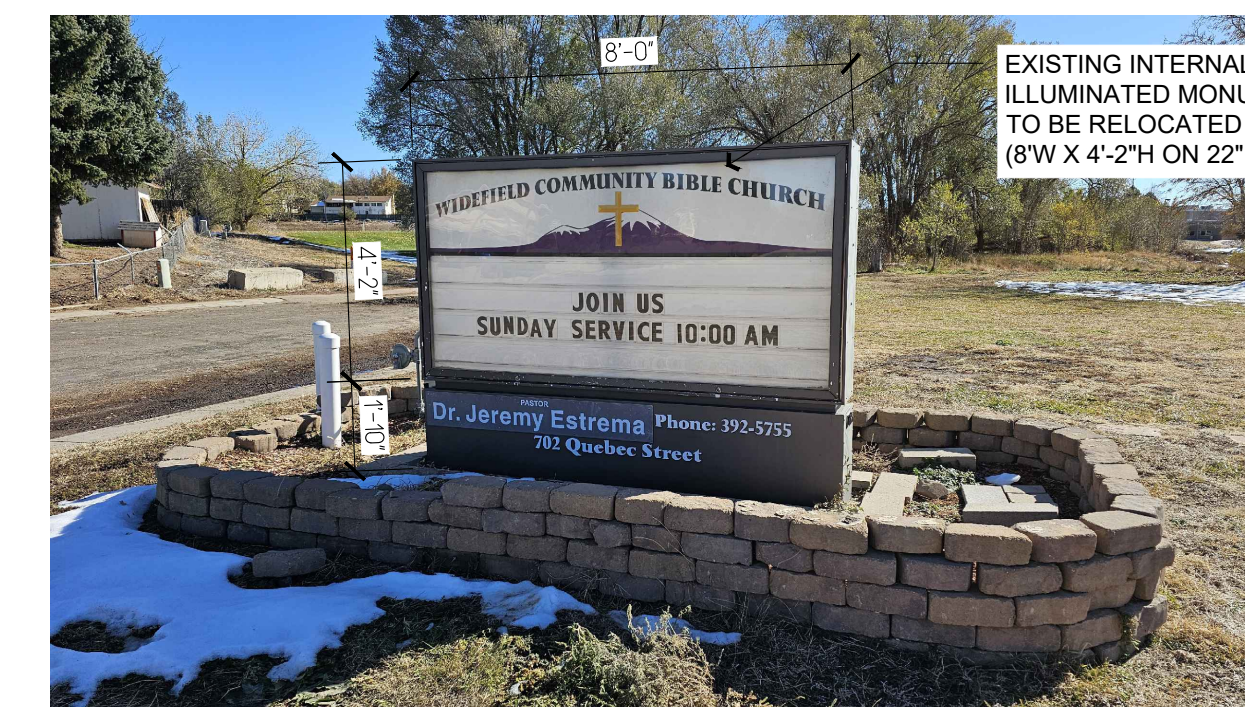
Checked by:

Scale: AS NOTED

Job No.:

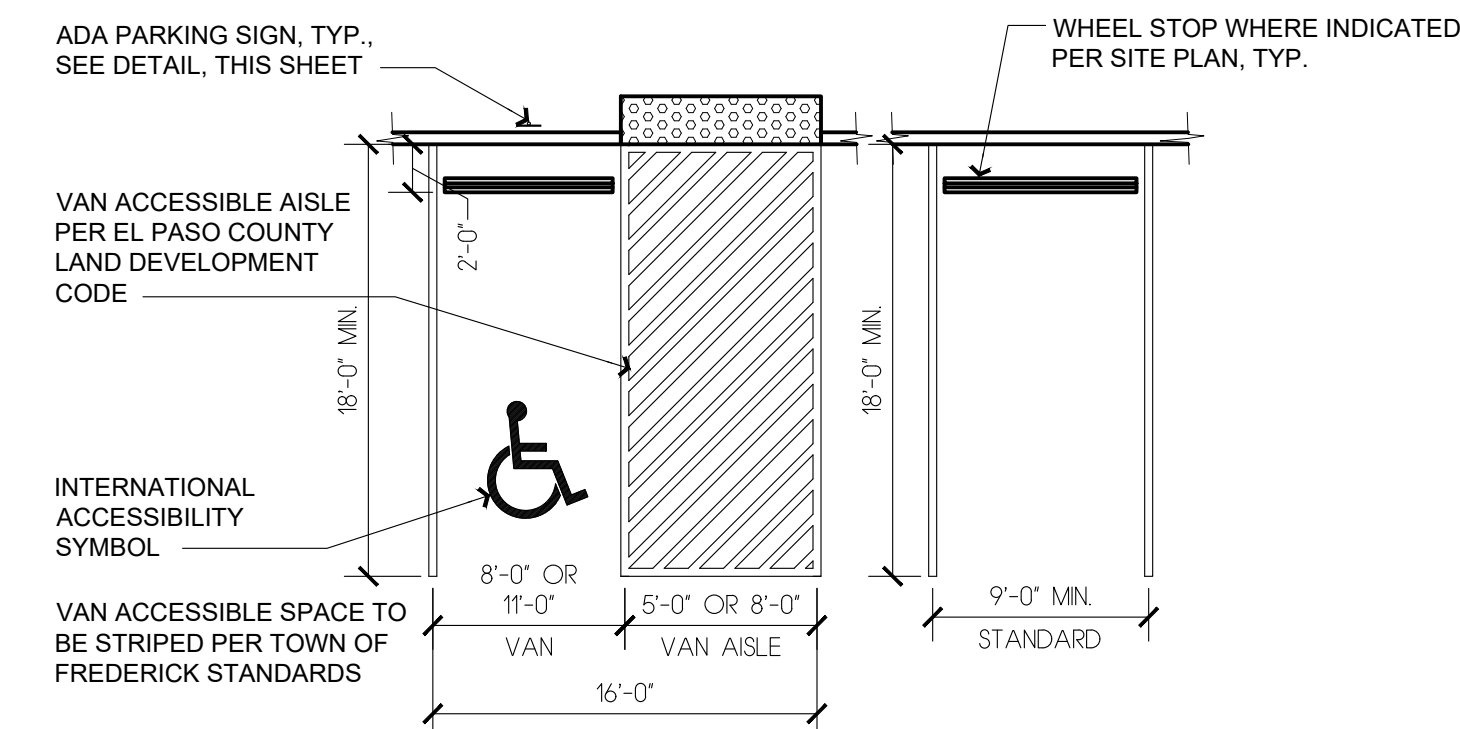
Sheet No.:

A0.2
Of



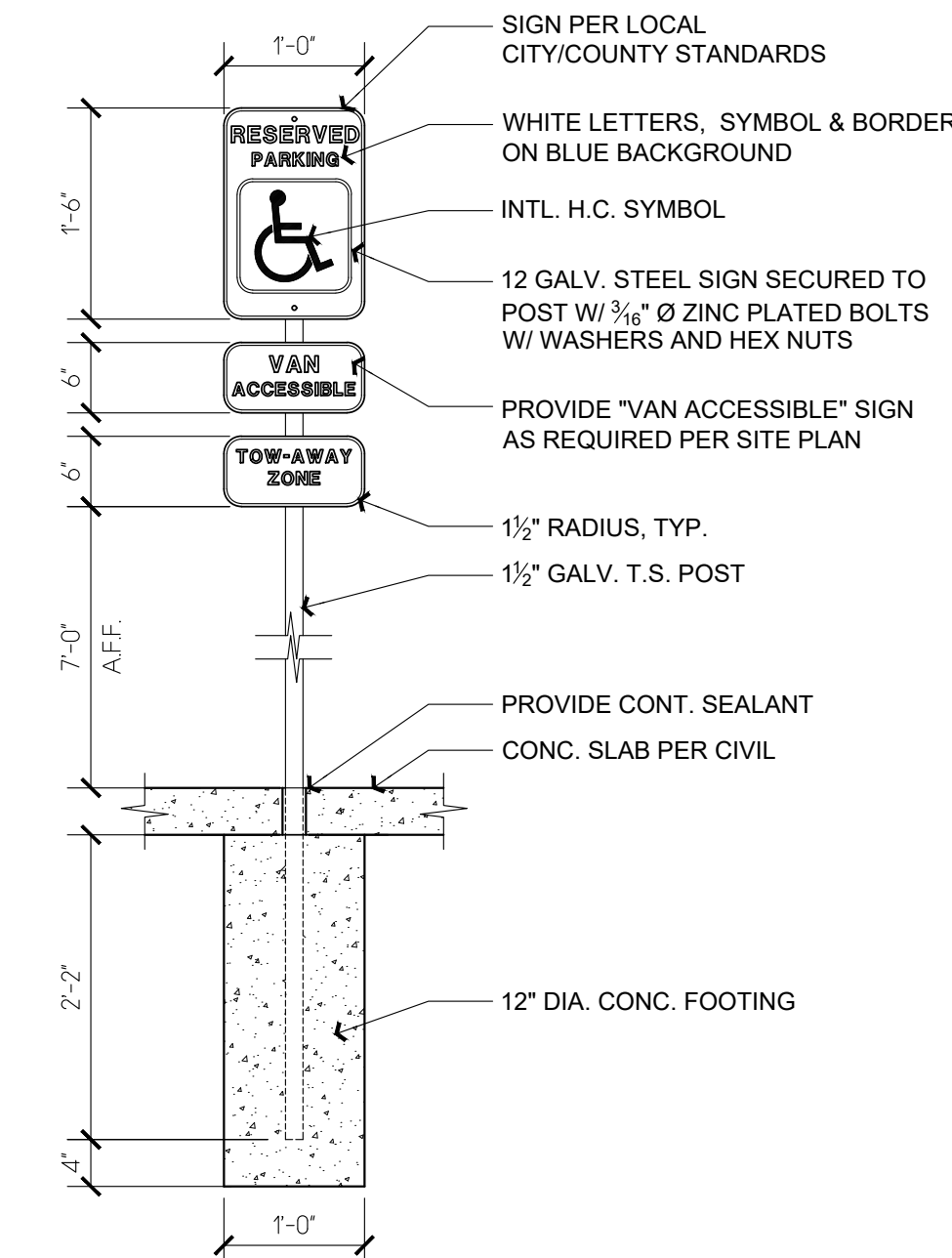
EXISTING INTERNALLY ILLUMINATED MONUMENT SIGN TO BE RELOCATED ON SITE (8'W X 4'-2"H ON 22" PEDESTAL)

1 EXIST, MONUMENT SIGN
NO SCALE

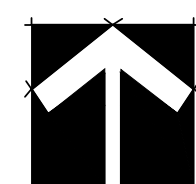
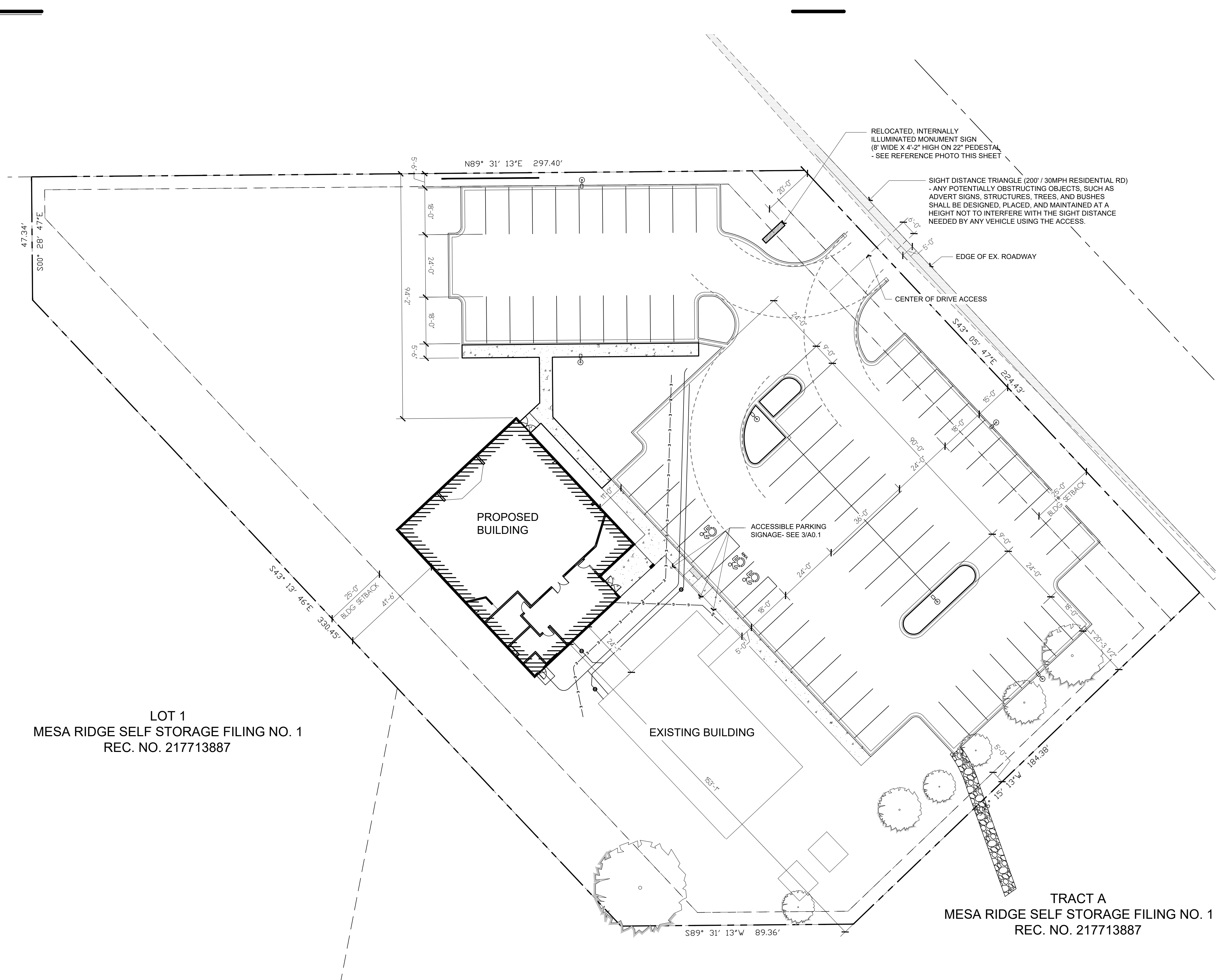


PARKING SIGNS: EACH ACCESSIBLE PARKING SPACE SHALL BE DESIGNATED AS RESERVED BY A SIGN SHOWING THE SYMBOL OF ACCESSIBILITY (A WHEELCHAIR). EACH SIGN SHALL BE NO SMALLER THAN ONE FOOT BY ONE FOOT (1' X 1') AND SHALL BE LOCATED AT THE END OF THE SPACE AT A HEIGHT BETWEEN FOUR (4) AND SEVEN FEET (7). THE SIGN MAY EITHER BE WALL MOUNTED OR FREESTANDING.

2 ACCESSIBLE PARKING
SCALE: 1/8" = 1'-0"



3 ACCESSIBLE SIGN
SCALE: 3/4" = 1'-0"



SITE SIGN PLAN

SCALE: 1" = 20'-0"

PPR2438