

EROSION CONTROL NOTES:

1. REFER TO THE COVER SHEET FOR EROSION CONTROL NOTES AND GRADING NOTES AND LEGEND.
2. THE TIMING FOR THE INSTALLATION OF THE CONTROL MEASURE IS EITHER INITIAL (PRIOR TO EARTHMOVING ACTIVITIES OCCURRING), INTERIM (AFTER INSTALLATION OF THE PROPOSED FACILITY IT WILL BE INSTALLED ALONG OR DOWNSTREAM OF) AND FINAL (AT THE END OF CONSTRUCTION).
3. EROSION CONTROL MEASURES INSTALLED IN INITIAL OR INTERIM PHASE, SHALL BE LEFT IN PLACE UNTIL AREA TRIBUTARY TO BMP IS STABILIZED.
4. CONTRACTOR TO REDLINE PLAN IF BMP LOCATIONS ARE DIFFERENT THAN SHOWN ON THE PLAN. COUNTY INSPECTOR SHALL APPROVE REDLINES.

MATCHLINE - SEE SHT C312

MATCHLINE - SEE SHT C312

GENERAL NOTES:

REVISIONS:

NO.	DATE	INITIALS	NOTES
1			
2			
3			
4			
5			
6			
7			
8			

PROFESSIONAL SEAL:



CONSTRUCTION DEPARTMENT
2727 NORTH CENTRAL AVENUE
PHOENIX, ARIZONA 85004
P: (602) 263-6502
F: (602) 277-1026

SITE ADDRESS:
U-HAUL at Falcon
Rolling Thunder Way
Falcon, CO 80831

SHEET CONTENTS:
GRADING AND EC PLAN
- INITIAL

866077

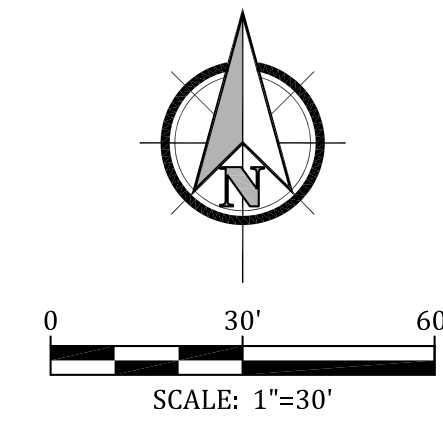
DRAWN: JRD
CHECKED: MWE
DATE: 8/26/22

C311

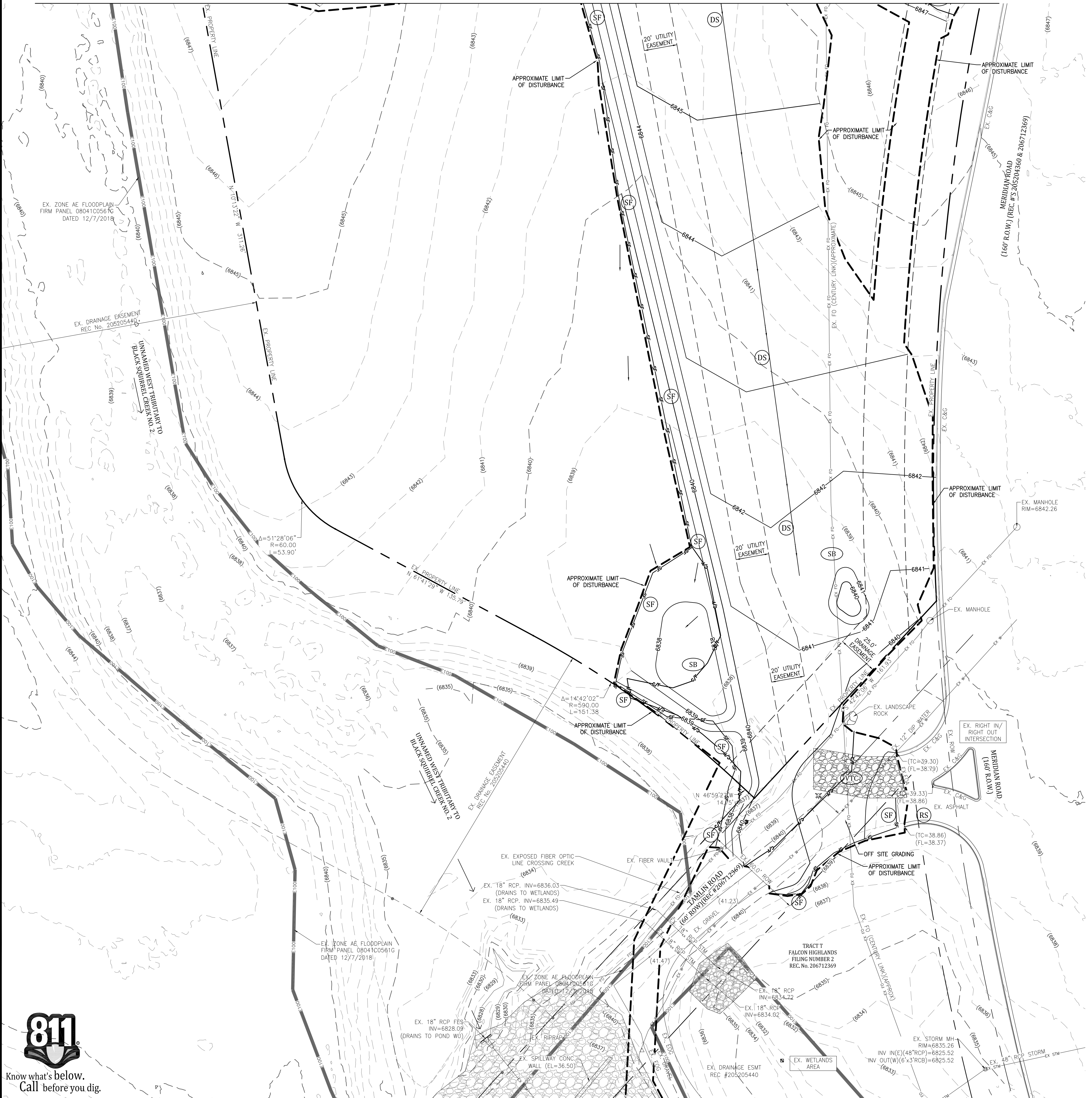
© COPYRIGHT AMERCO REAL ESTATE COMPANY

MATCHLINE - SEE SHT C311

MATCHLINE - SEE SHT C311



- EROSION CONTROL NOTES:**
1. REFER TO THE COVER SHEET FOR EROSION CONTROL NOTES AND GRADING NOTES AND LEGEND.
 2. THE TIMING FOR THE INSTALLATION OF THE CONTROL MEASURE IS EITHER INITIAL (PRIOR TO EARTHMOVING ACTIVITIES OCCURRING), INTERIM (AFTER INSTALLATION OF THE PROPOSED FACILITY IT WILL BE INSTALLED ALONG OR DOWNSTREAM OF) AND FINAL (AT THE END OF CONSTRUCTION).
 3. EROSION CONTROL MEASURES INSTALLED IN INITIAL OR INTERIM PHASE, SHALL BE LEFT IN PLACE UNTIL AREA TRIBUTARY TO BMP IS STABILIZED.
 4. CONTRACTOR TO REDLINE PLAN IF BMP LOCATIONS ARE DIFFERENT THAN SHOWN ON THE PLAN. COUNTY INSPECTOR SHALL APPROVE REDLINES.



GENERAL NOTES:

REVISIONS:

NO.	DATE	INITIALS	NOTES
1			
2			
3			
4			
5			
6			
7			
8			

PROFESSIONAL SEAL:

Kiowa
Engineering Corporation
7175 West Jefferson Avenue, Suite 2500
Lakewood, CO 80126
(303) 692-0369

AMERCO
REAL ESTATE COMPANY

CONSTRUCTION DEPARTMENT
2727 NORTH CENTRAL AVENUE
PHOENIX, ARIZONA 85004
P: (602) 263-6502
F: (602) 277-1026

SITE ADDRESS:
U-HAUL at Falcon
Rolling Thunder Way
Falcon, CO 80831

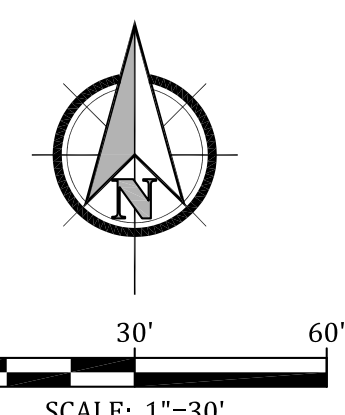
SHEET CONTENTS:
GRADING AND EC PLAN
- INITIAL

866077

DRAWN:	JRD	C312
CHECKED:	MWE	
DATE:	8/26/22	



© COPYRIGHT AMERCO REAL ESTATE COMPANY



EROSION CONTROL NOTES:
 1. REFER TO THE COVER SHEET FOR EROSION CONTROL NOTES AND GRADING NOTES AND LEGEND.
 2. THE TIMING FOR THE INSTALLATION OF THE CONTROL MEASURE IS EITHER INITIAL (PRIOR TO EARTHMOVING ACTIVITIES OCCURRING), INTERIM (AFTER INSTALLATION OF THE PROPOSED FACILITY IT WILL BE INSTALLED ALONG OR DOWNSTREAM OF) AND FINAL (AT THE END OF CONSTRUCTION).
 3. EROSION CONTROL MEASURES INSTALLED IN INITIAL OR INTERIM PHASE, SHALL BE LEFT IN PLACE UNTIL AREA TRIBUTARY TO BMP IS STABILIZED. CONTRACTOR TO REDLINE PLAN IF BMP LOCATIONS ARE DIFFERENT THAN SHOWN ON THE PLAN. COUNTY INSPECTOR SHALL APPROVE REDLINES.

BENCHMARK: USGS MONUMENT E-24. ELEVATION=6902.30 (NAVD88)

MATCHLINE - SEE SHT C314

MATCHLINE - SEE SHT C314

GENERAL NOTES:

REVISIONS:

NO.	DATE	INITIALS	NOTES
1			
2			
3			
4			
5			
6			
7			
8			

PROFESSIONAL SEAL:

AMERCO
REAL ESTATE COMPANY

CONSTRUCTION DEPARTMENT
 2727 NORTH CENTRAL AVENUE
 PHOENIX, ARIZONA 85004
 P: (602) 263-6502
 F: (602) 277-1026

SITE ADDRESS:
 U-HAUL at Falcon
 Rolling Thunder Way
 Falcon, CO 80831

SHEET CONTENTS:
 GRADING AND EC PLAN
 - INTERIM

866077

DRAWN: JRD
 CHECKED: MWE
 DATE: 8/26/22

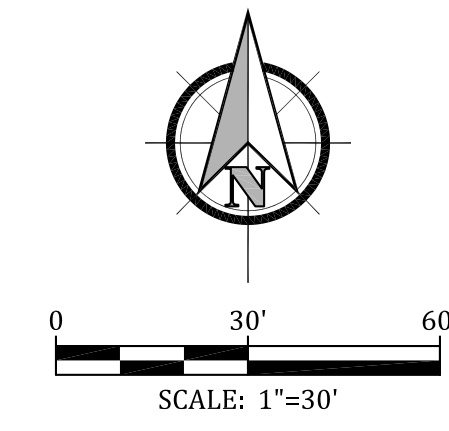
C313

© COPYRIGHT AMERCO REAL ESTATE COMPANY

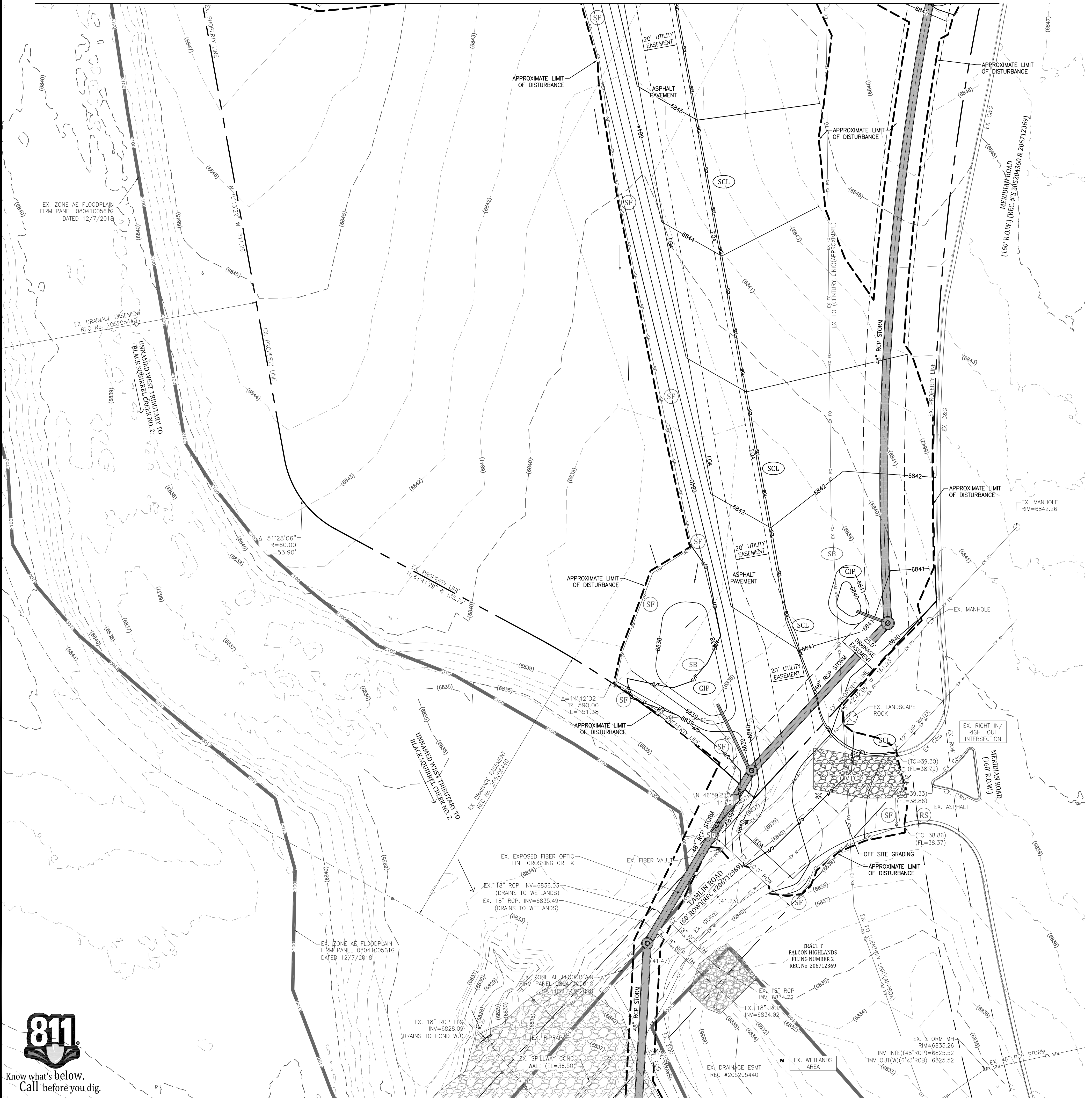


MATCHLINE - SEE SHT C313

MATCHLINE - SEE SHT C313



- EROSION CONTROL NOTES:**
1. REFER TO THE COVER SHEET FOR EROSION CONTROL NOTES AND GRADING NOTES AND LEGEND.
 2. THE TIMING FOR THE INSTALLATION OF THE CONTROL MEASURE IS EITHER INITIAL (PRIOR TO EARTHMOVING ACTIVITIES OCCURRING), INTERIM (AFTER INSTALLATION OF THE PROPOSED FACILITY IT WILL BE INSTALLED ALONG OR DOWNSTREAM OF) AND FINAL (AT THE END OF CONSTRUCTION).
 3. EROSION CONTROL MEASURES INSTALLED IN INITIAL OR INTERIM PHASE, SHALL BE LEFT IN PLACE UNTIL AREA TRIBUTARY TO BMP IS STABILIZED.
 4. CONTRACTOR TO REDLINE PLAN IF BMP LOCATIONS ARE DIFFERENT THAN SHOWN ON THE PLAN. COUNTY INSPECTOR SHALL APPROVE REDLINES.



GENERAL NOTES:

REVISIONS:

NO.	DATE	INITIALS	NOTES
1			
2			
3			
4			
5			
6			
7			
8			

PROFESSIONAL SEAL:



AMERCO
REAL ESTATE COMPANY

CONSTRUCTION DEPARTMENT
2727 NORTH CENTRAL AVENUE
PHOENIX, ARIZONA 85004

P: (602) 263-6502
F: (602) 277-1026

SITE ADDRESS:
U-HAUL at Falcon
Rolling Thunder Way
Falcon, CO 80831

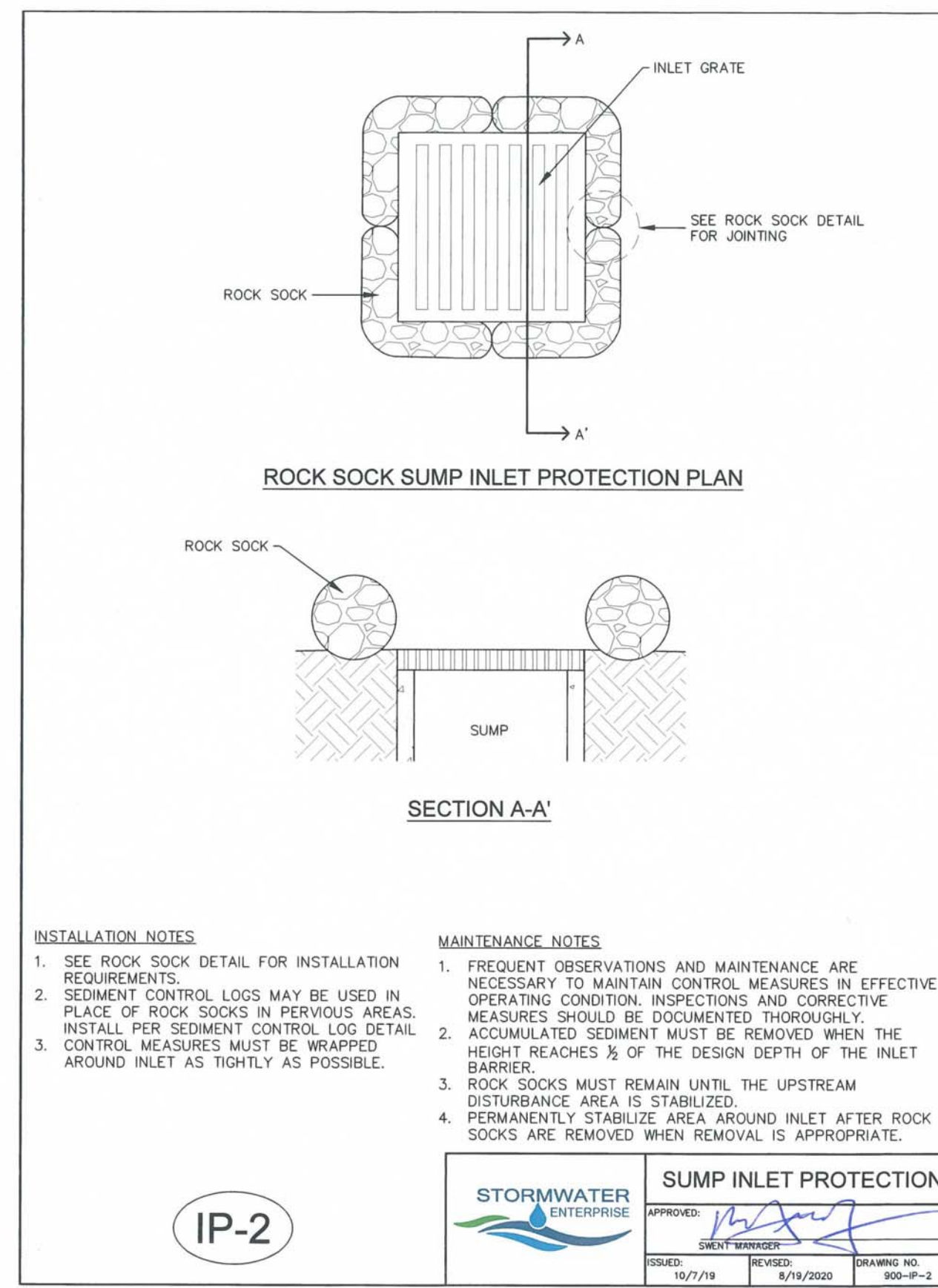
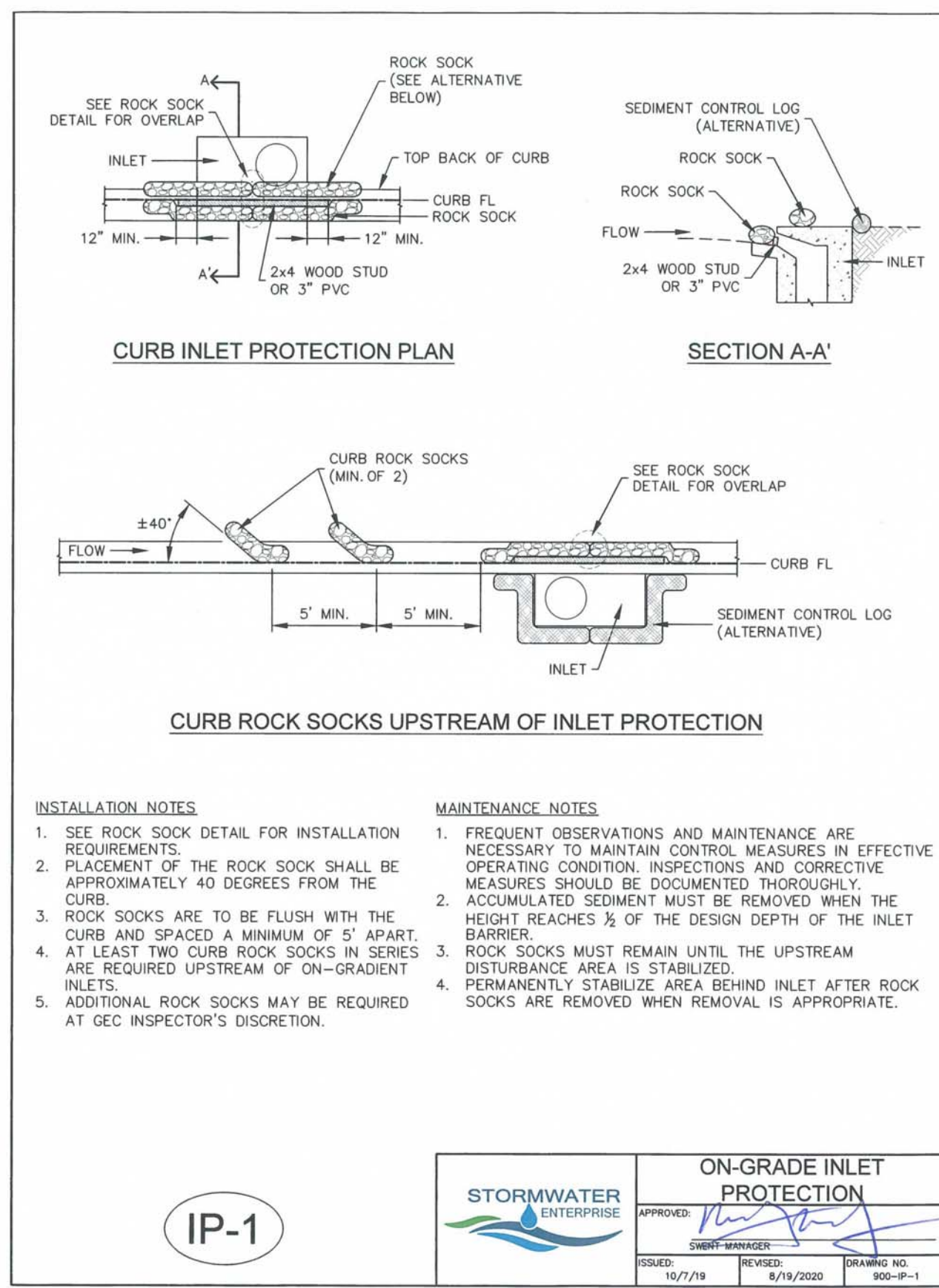
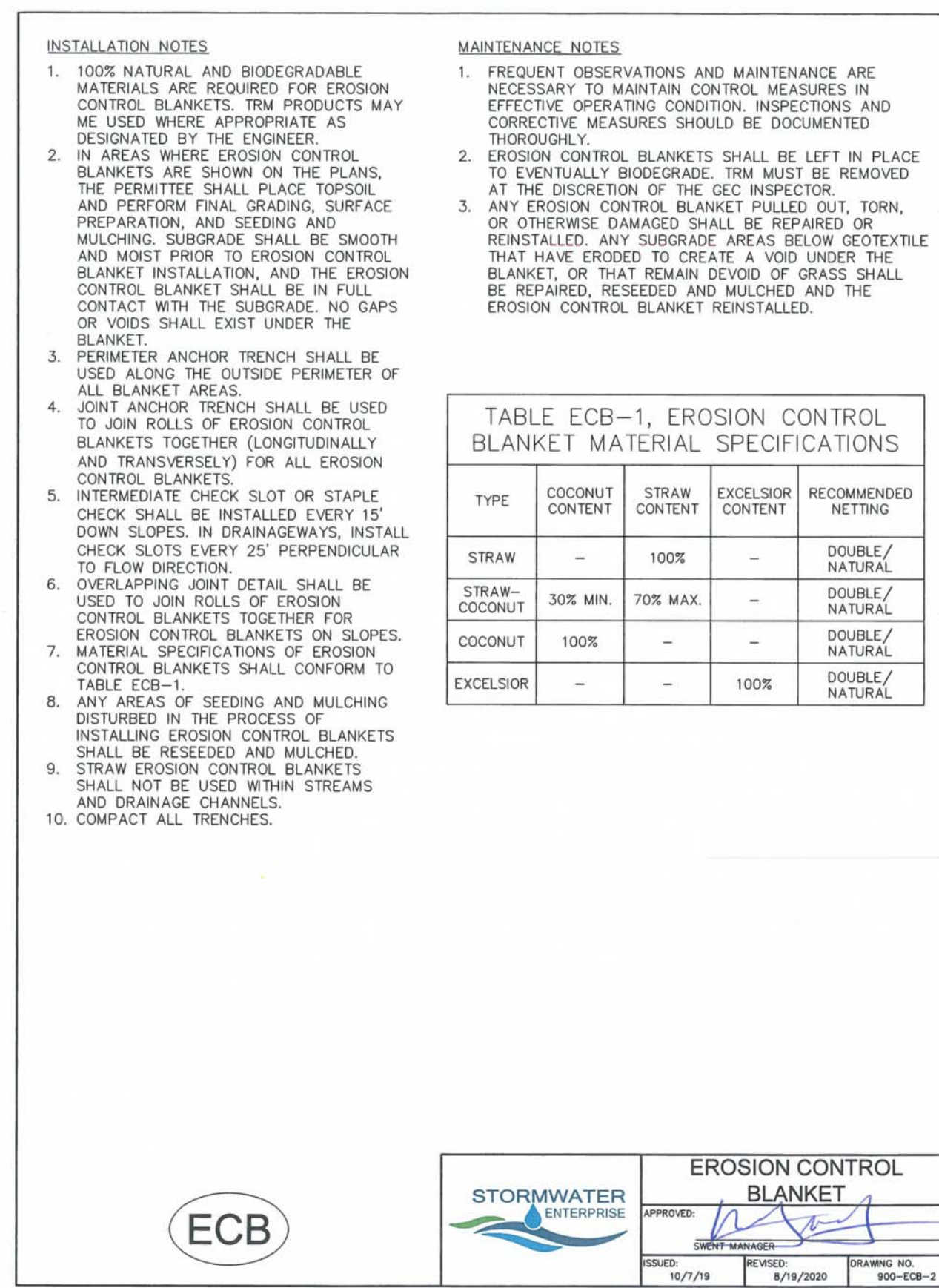
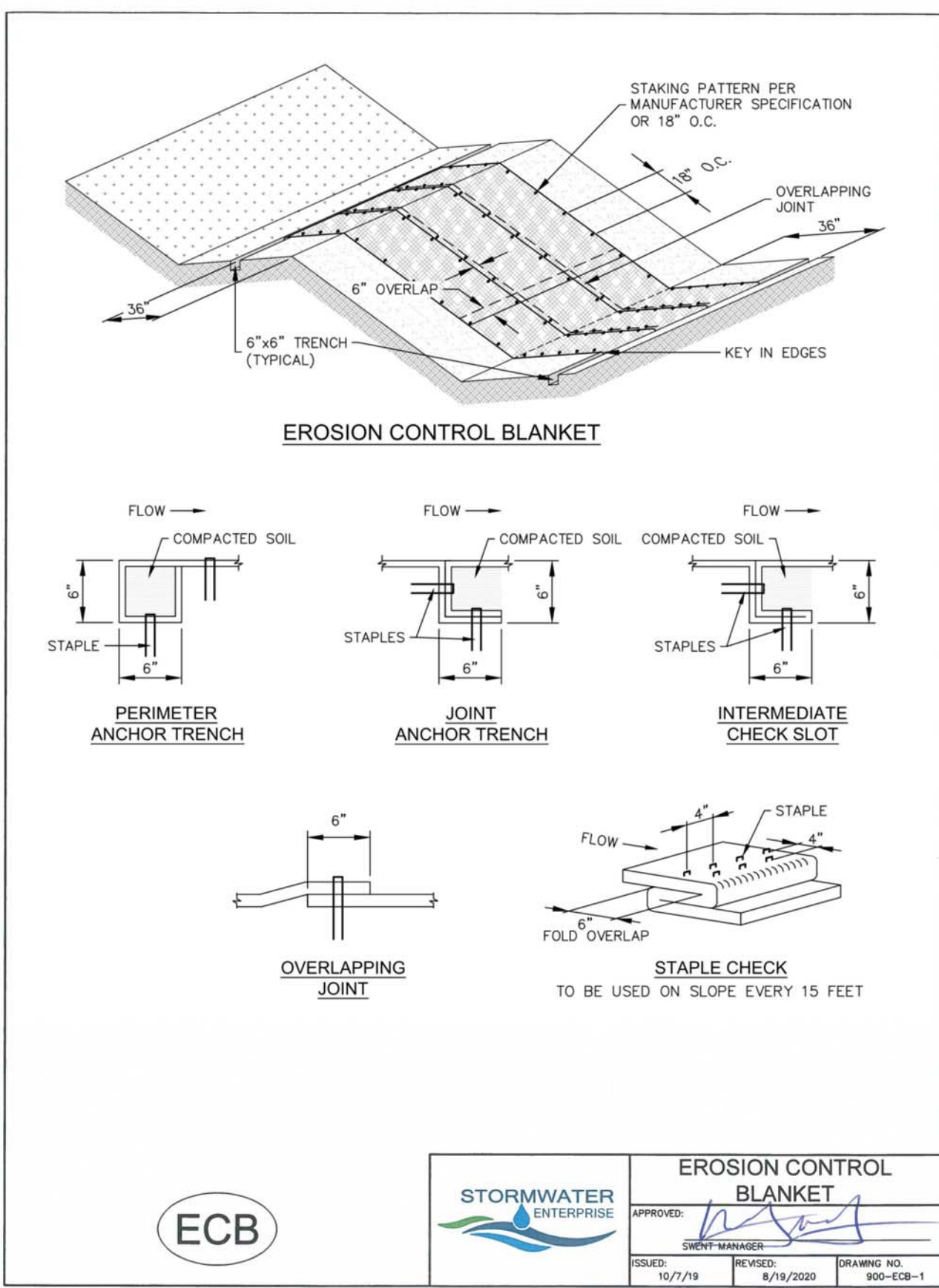
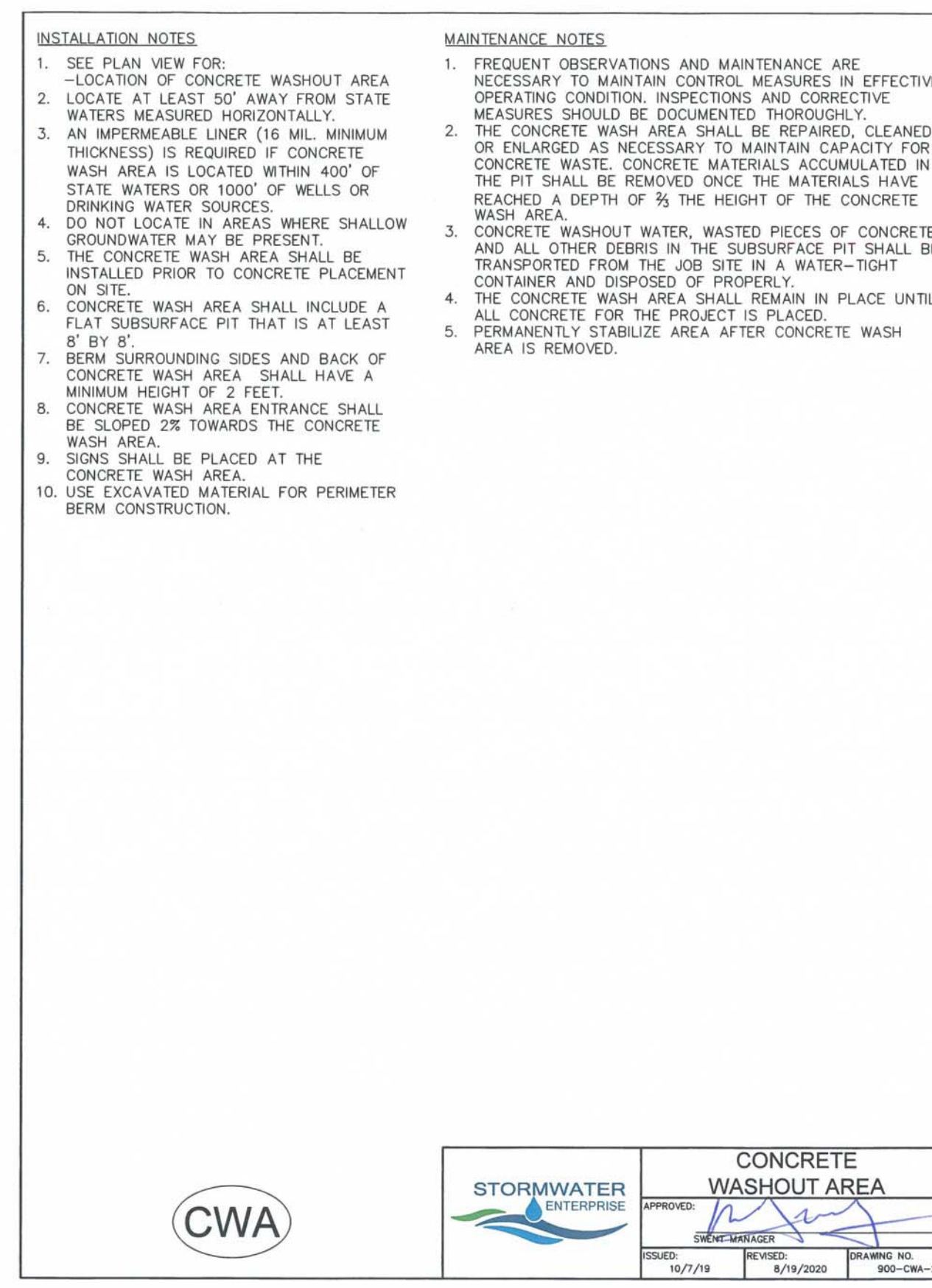
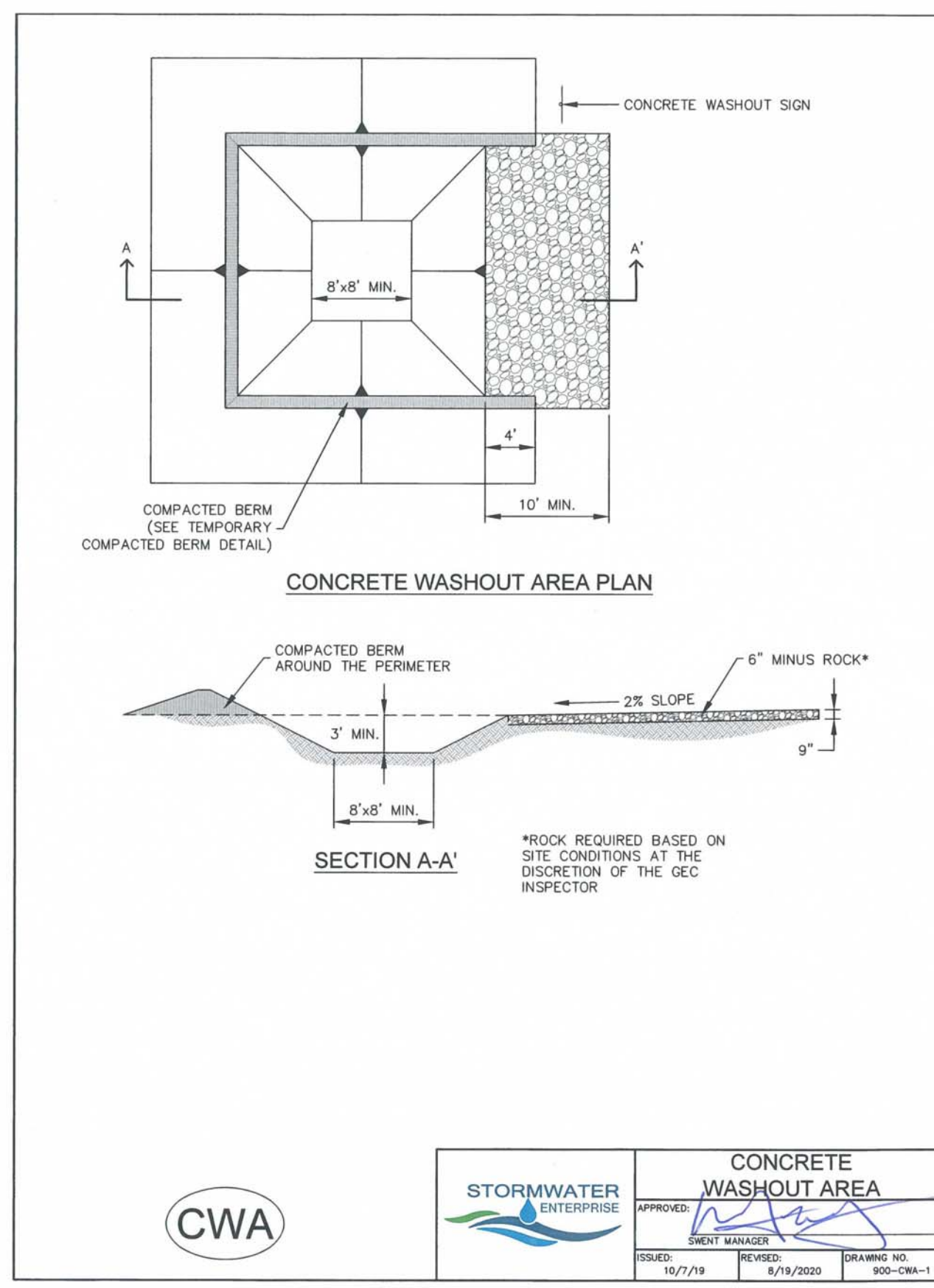
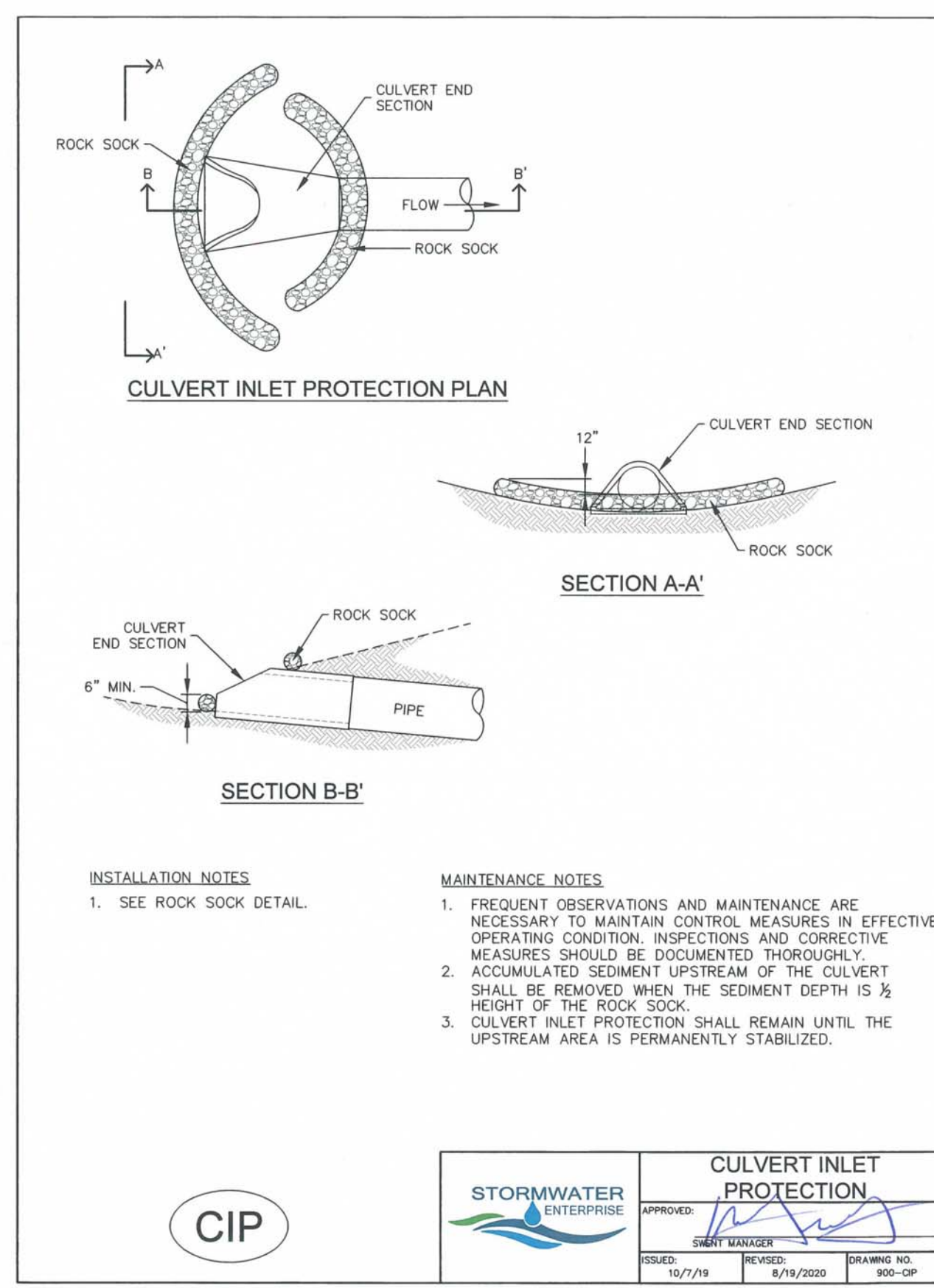
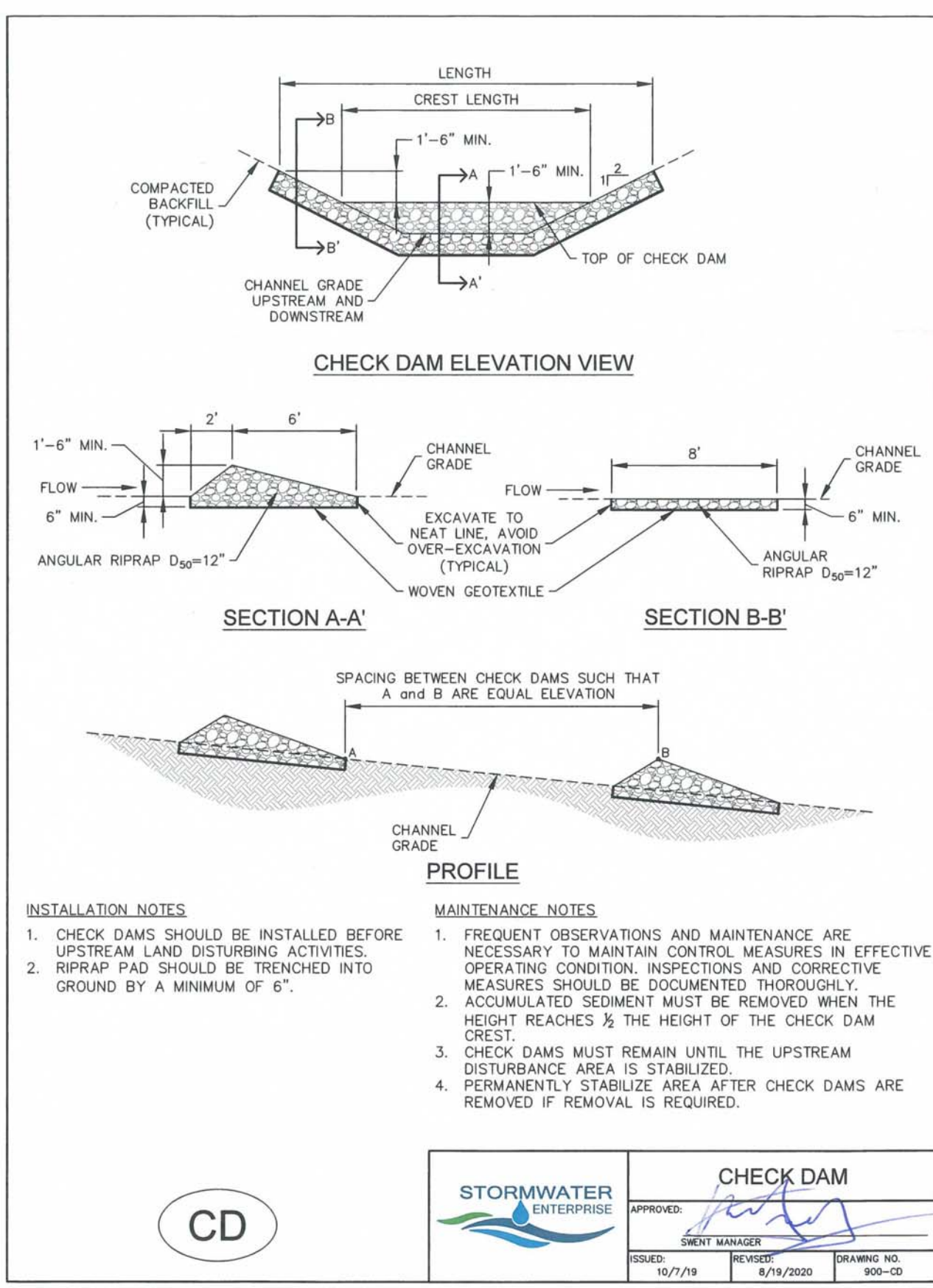
SHEET CONTENTS:
GRADING AND EC PLAN
- INTERIM

866077

DRAWN:	JRD	C314
CHECKED:	MWE	
DATE:	8/26/22	



© COPYRIGHT AMERCO REAL ESTATE COMPANY



GENERAL NOTES:

REVISIONS:

NO.	DATE	INITIALS	NOTES
1			
2			
3			
4			
5			
6			
7			
8			

PROFESSIONAL SEAL:

Kiowa Engineering Corporation
 7775 West Jefferson Avenue, Suite 2500
 Lakewood, CO 80424
 (303) 682-0366

AMERCO REAL ESTATE COMPANY

CONSTRUCTION DEPARTMENT
 2727 NORTH CENTRAL AVENUE
 PHOENIX, ARIZONA 85004
 P: (602) 263-6502
 F: (602) 277-1026

SITE ADDRESS:
 U-HAUL at Falcon
 Rolling Thunder Way
 Falcon, CO 80831

SHEET CONTENTS:
 GRADING AND EC PLAN
 - DETAIL SHT

866077

DRAWN: JRD
 CHECKED: MWE
 DATE: 8/26/22

C315

© COPYRIGHT AMERCO REAL ESTATE COMPANY

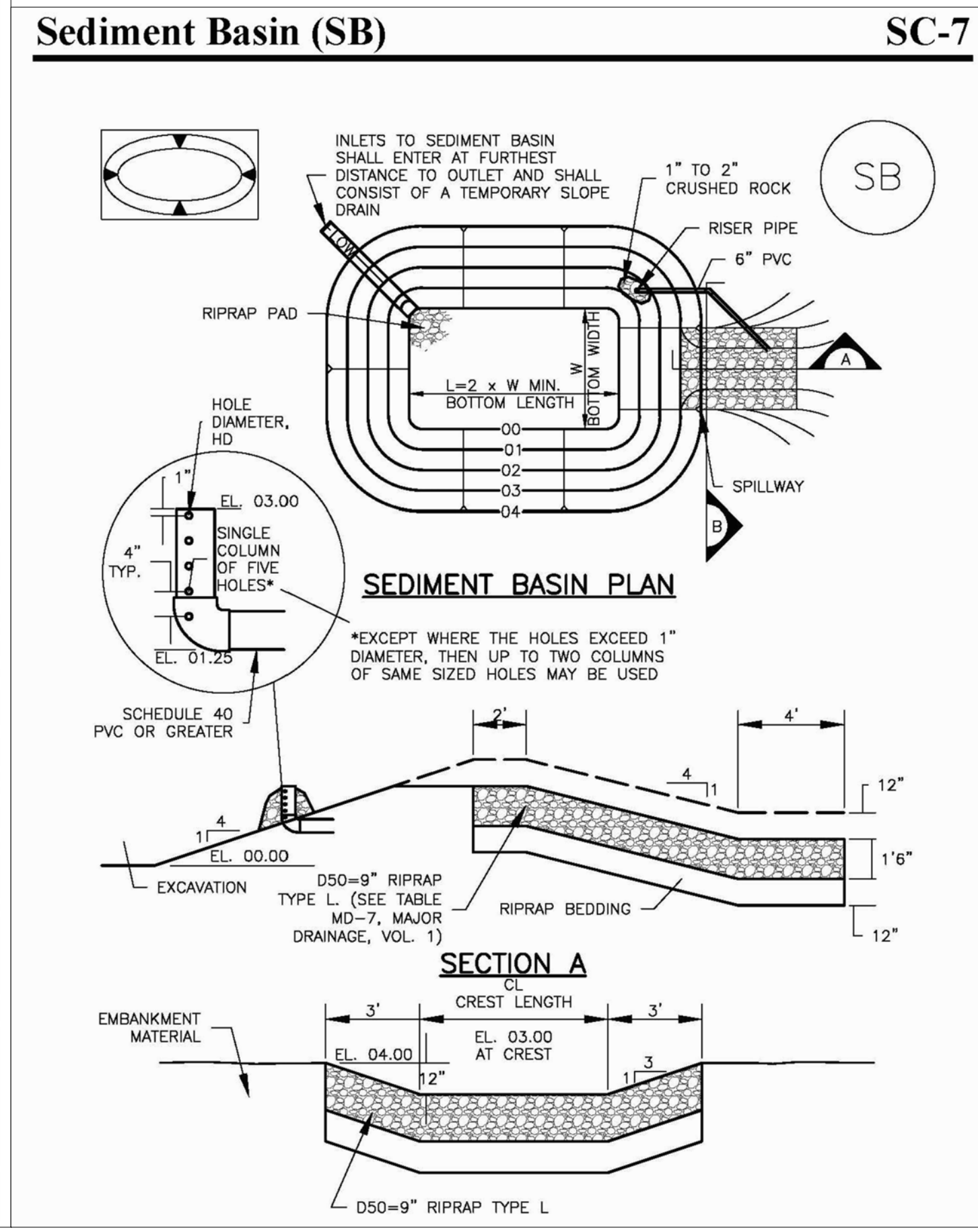
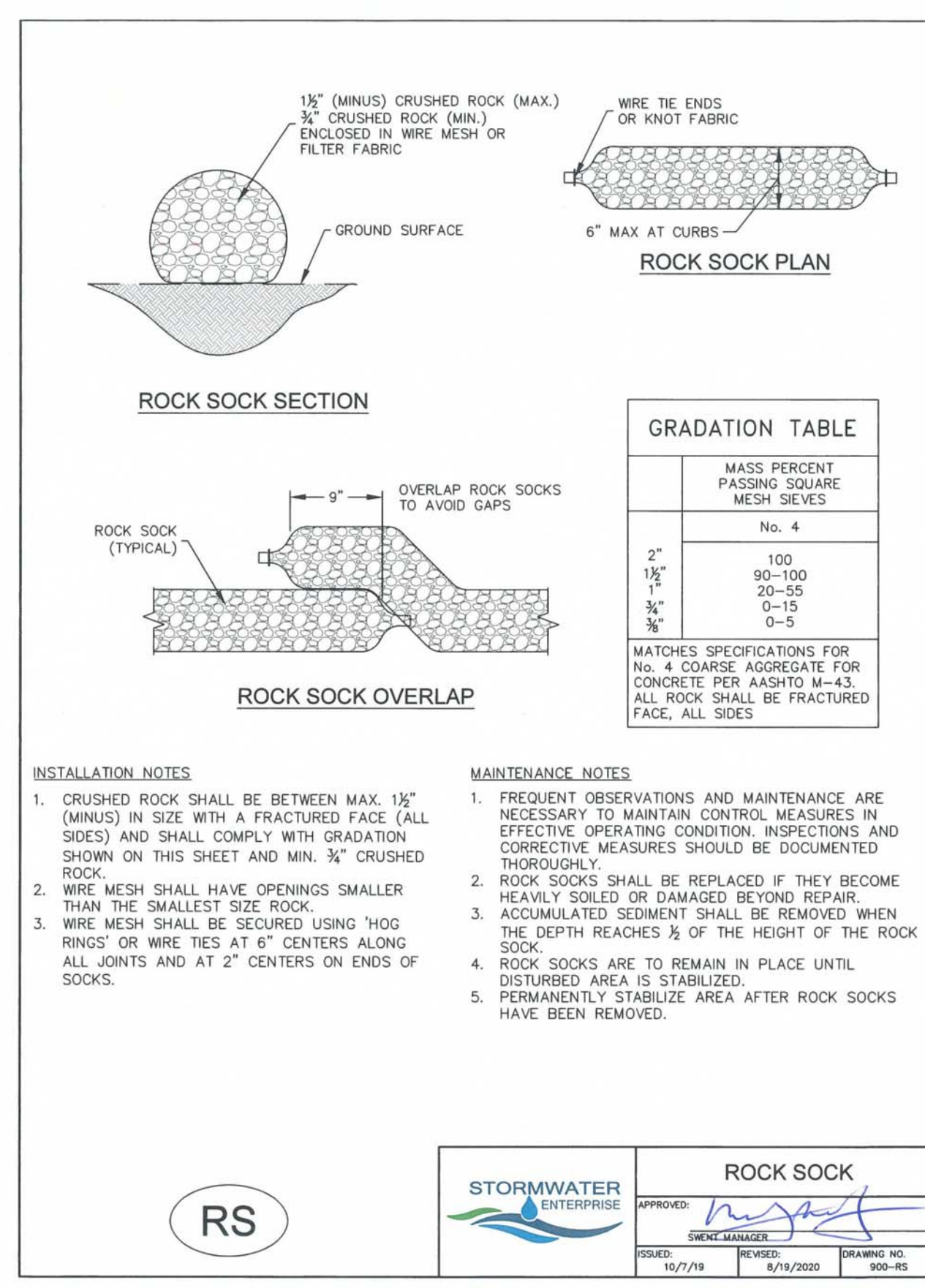
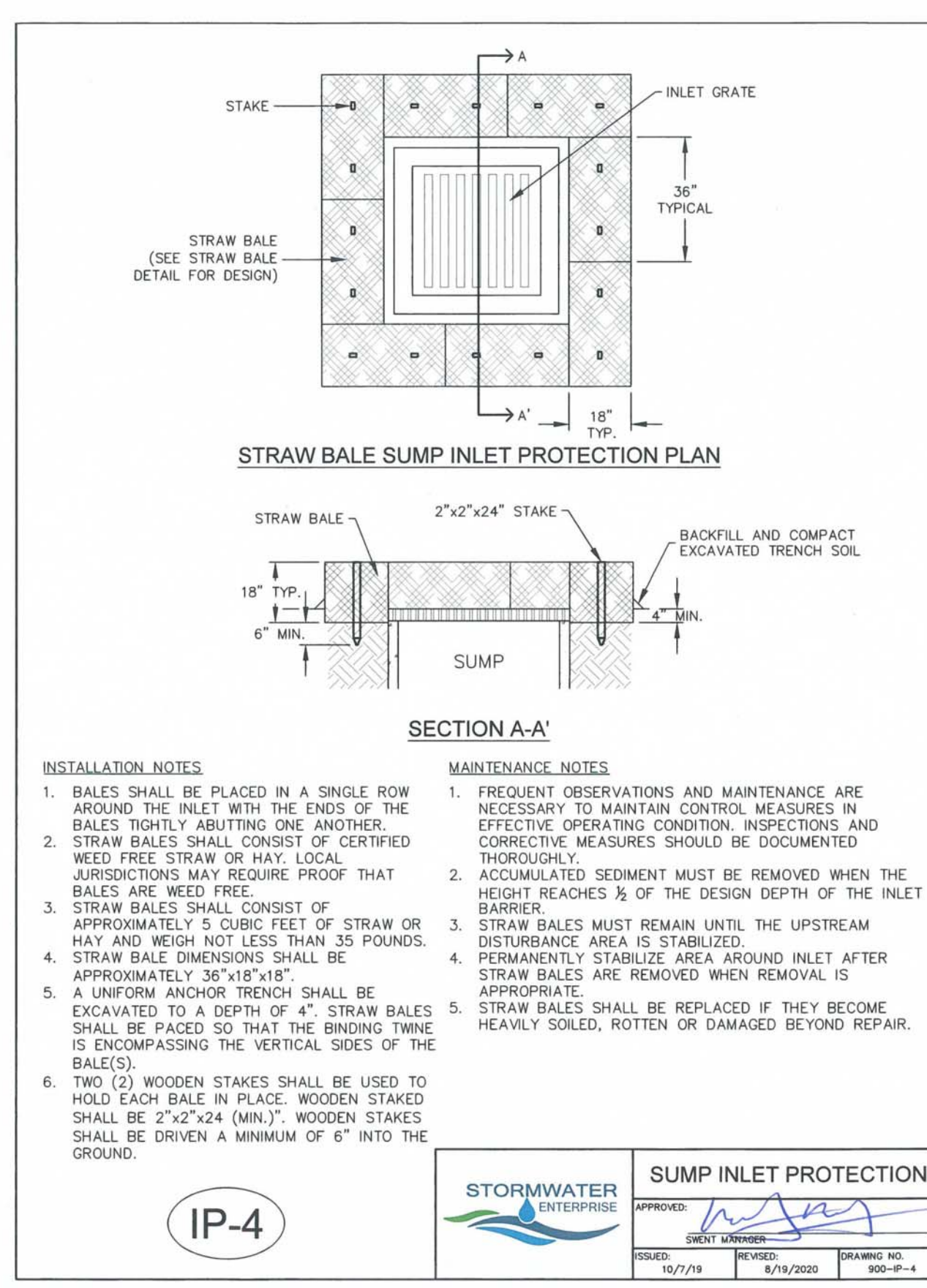
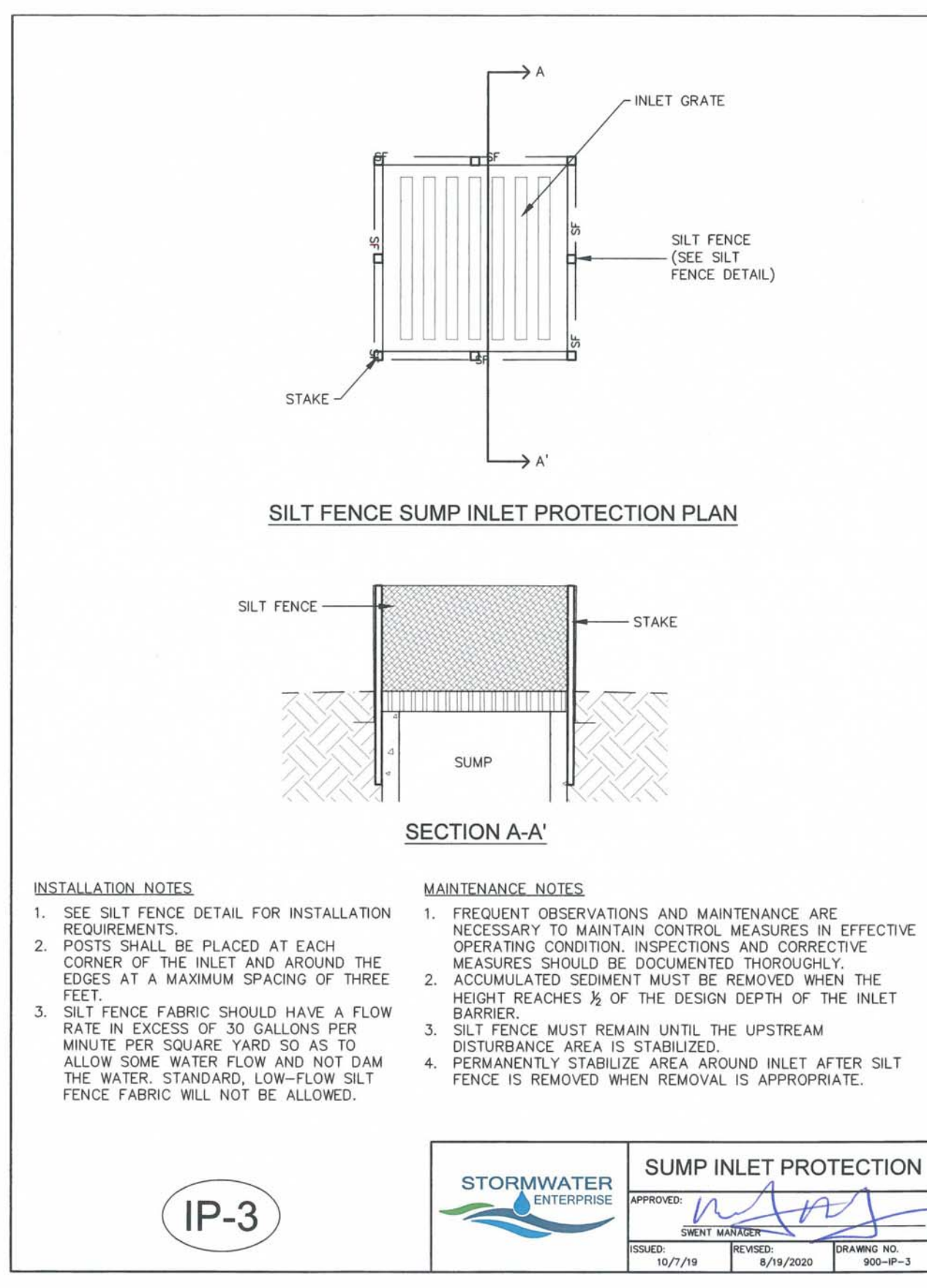


TABLE SB-1. SIZING INFORMATION FOR STANDARD SEDIMENT BASIN

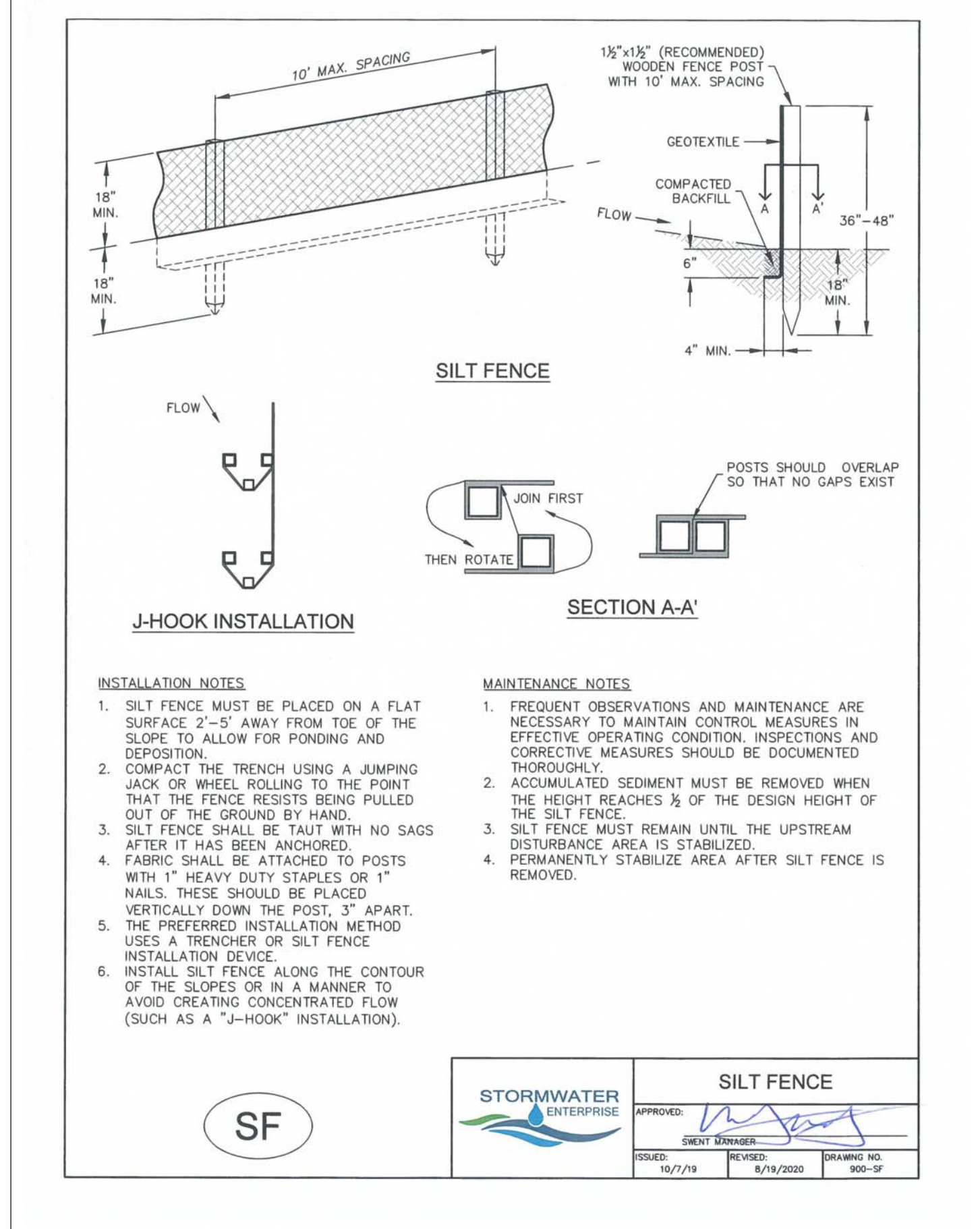
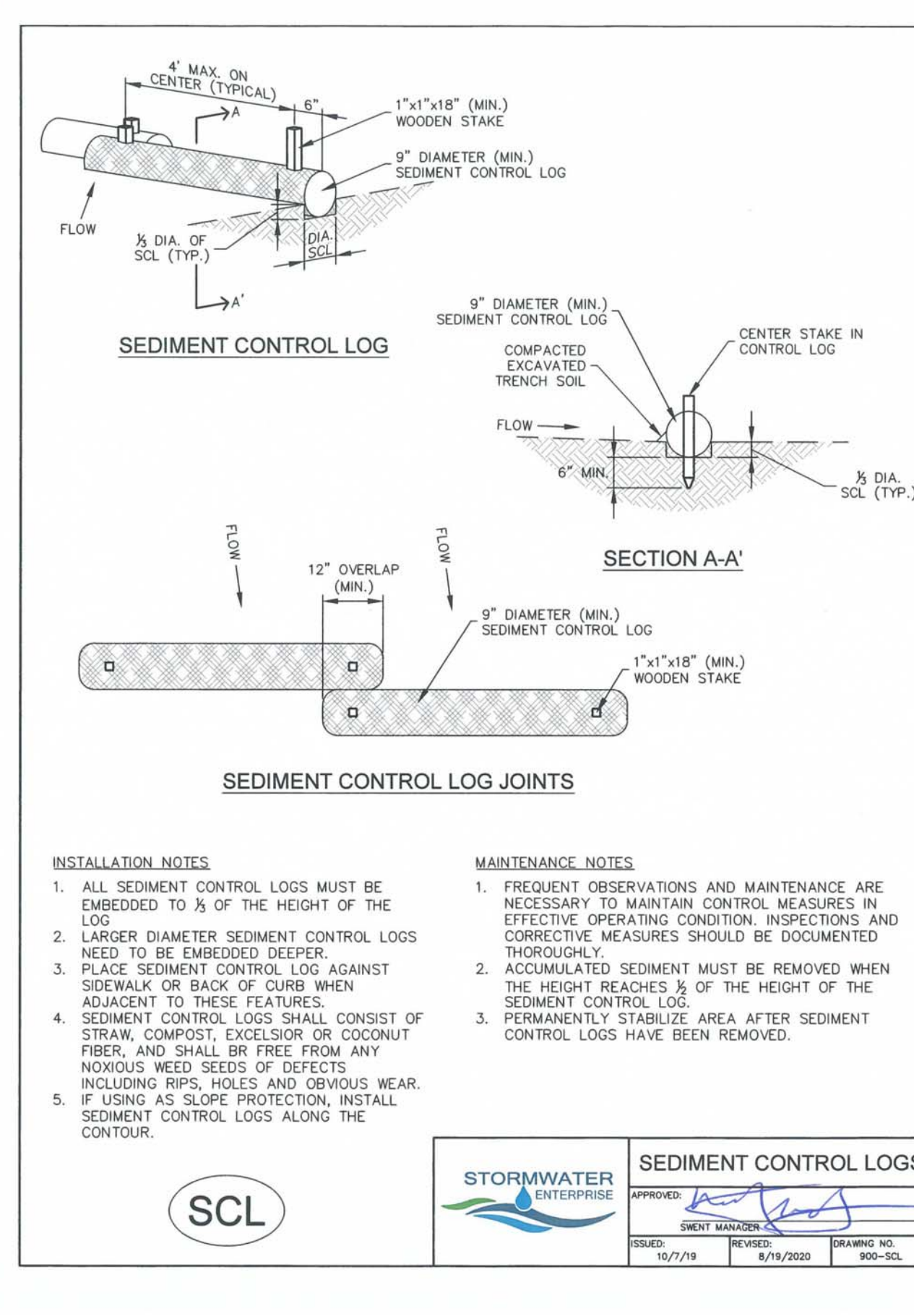
Upstream Drainage Area (rounded to nearest acre), (ac)	Basin Bottom Width (W), (ft)	Spillway Crest Length (CL), (ft)	Hole Diameter (HD), (in)
1	12 1/2	2	3/2
2	21	3	1 1/4
3	28	5	5/2
4	33 1/2	6	2 1/2
5	38 1/2	9	2 3/2
6	43	9	2 3/2
7	47 1/4	11	2 5/2
8	51	12	2 7/2
9	55	13	7/8
10	58 1/4	15	1 5/16
11	61	16	3 3/2
12	64	18	1
13	67 1/2	19	1 1/16
14	70 1/2	21	1 1/8
15	73 1/4	22	1 1/16

SEDIMENT BASIN INSTALLATION NOTES

- SEE PLAN VIEW FOR:
 - LOCATION OF SEDIMENT BASIN.
 - TYPE OF BASIN (STANDARD BASIN OR NONSTANDARD BASIN).
 - FOR STANDARD BASIN, BOTTOM WIDTH W, CREST LENGTH CL, AND HOLE DIAMETER, HD.
 - FOR NONSTANDARD BASIN, SEE CONSTRUCTION DRAWINGS FOR DESIGN OF BASIN INCLUDING RISER HEIGHT H, NUMBER OF COLUMNS N, HOLE DIAMETER HD AND PIPE DIAMETER D.
- FOR STANDARD BASIN, BOTTOM DIMENSION MAY BE MODIFIED AS LONG AS BOTTOM AREA IS NOT REDUCED.
- SEDIMENT BASINS SHALL BE INSTALLED PRIOR TO ANY OTHER LAND-DISTURBING ACTIVITY THAT RELIES ON BASINS AS A STORMWATER CONTROL.
- EMBANKMENT MATERIAL SHALL CONSIST OF SOIL FREE OF DEBRIS, ORGANIC MATERIAL, AND ROCKS OR CONCRETE GREATER THAN 3 INCHES AND SHALL HAVE A MINIMUM OF 15 PERCENT BY WEIGHT PASSING THE NO. 200 SIEVE.
- EMBANKMENT MATERIAL SHALL BE COMPACTED TO AT LEAST 95 PERCENT OF MAXIMUM DENSITY IN ACCORDANCE WITH ASTM D698.
- PIPE SCH 40 OR GREATER SHALL BE USED.
- THE DETAILS SHOWN ON THESE SHEETS PERTAIN TO STANDARD SEDIMENT BASIN(S) FOR DRAINAGE AREAS LESS THAN 15 ACRES. SEE CONSTRUCTION DRAWINGS FOR EMBANKMENT, STORAGE VOLUME, SPILLWAY, OUTLET, AND OUTLET PROTECTION DETAILS FOR ANY SEDIMENT BASIN(S) THAT HAVE BEEN INDIVIDUALLY DESIGNED FOR DRAINAGE AREAS LARGER THAN 15 ACRES.

SEDIMENT BASIN MAINTENANCE NOTES

- INSPECT BMPs EACH WORKDAY, AND MAINTAIN THEM IN EFFECTIVE OPERATING CONDITION. MAINTENANCE OF BMPs SHOULD BE PROACTIVE, NOT REACTIVE. INSPECT BMPs AS SOON AS POSSIBLE (AND ALWAYS WITHIN 24 HOURS) FOLLOWING A STORM THAT CAUSES SURFACE EROSION, AND PERFORM NECESSARY MAINTENANCE.
- FREQUENT OBSERVATIONS AND MAINTENANCE ARE NECESSARY TO MAINTAIN BMPs IN EFFECTIVE OPERATING CONDITION. INSPECTIONS AND CORRECTIVE MEASURES SHOULD BE DOCUMENTED THOROUGHLY.
- WHERE BMPs HAVE FAILED, REPAIR OR REPLACEMENT SHOULD BE INITIATED UPON DISCOVERY OF THE FAILURE.
- SEDIMENT ACCUMULATED IN BASIN SHALL BE REMOVED AS NEEDED TO MAINTAIN BMP EFFECTIVENESS, TYPICALLY WHEN SEDIMENT DEPTH REACHES ONE FOOT (I.E., TWO FEET BELOW THE SPILLWAY CREST).
- SEDIMENT BASINS ARE TO REMAIN IN PLACE UNTIL THE UPSTREAM DISTURBED AREA IS STABILIZED AND GRASS COVER IS ACCEPTED BY THE LOCAL JURISDICTION.
- WHEN SEDIMENT BASINS ARE REMOVED, ALL DISTURBED AREAS SHALL BE COVERED WITH TOPSOIL, SEEDED AND MULCHED OR OTHERWISE STABILIZED AS APPROVED BY LOCAL JURISDICTION.



GENERAL NOTES:

REVISIONS:

NO.	DATE	INITIALS	NOTES
1			
2			
3			
4			
5			
6			
7			
8			

PROFESSIONAL SEAL:

Kiowa Engineering Corporation
 7775 West Jefferson Avenue, Suite 2500
 Lakewood, CO 80226
 (303) 682-0366

AMERCO REAL ESTATE COMPANY

CONSTRUCTION DEPARTMENT
 2727 NORTH CENTRAL AVENUE
 PHOENIX, ARIZONA 85004
 P: (602) 263-6502
 F: (602) 277-1026

SITE ADDRESS:
 U-HAUL at Falcon
 Rolling Thunder Way
 Falcon, CO 80831

SHEET CONTENTS:
 GRADING AND EC PLAN
 - DETAIL SH1

866077

DRAWN: JRD
 CHECKED: MWE
 DATE: 8/26/22

C316

© COPYRIGHT - AMERCO REAL ESTATE COMPANY

SEEDING & MULCHING

ALL SOIL TESTING, SOILS AMENDMENT AND FERTILIZER DOCUMENTATION, AND SEED LOAD AND BAG TICKETS MUST BE ADDED TO THE CSWMP.

SOIL PREPARATION

- IN AREAS TO BE SEEDDED, THE UPPER 6 INCHES OF THE SOIL MUST NOT BE HEAVILY COMPACTED, AND SHOULD BE IN FRIABLE CONDITION. LESS THAN 85% STANDARD PROCTOR DENSITY IS ACCEPTABLE. AREAS OF COMPACTION OR GENERAL CONSTRUCTION ACTIVITY MUST BE SCARIFIED TO A DEPTH OF 6 TO 12 INCHES PRIOR TO SPREADING TOPSOIL TO BREAK UP COMPACTED LAYERS AND PROVIDE A BLENDING ZONE BETWEEN DIFFERENT SOIL LAYERS.
- AREAS TO BE PLANTED SHALL HAVE AT LEAST 4 INCHES OF TOPSOIL SUITABLE TO SUPPORT PLANT GROWTH.
- THE CITY RECOMMENDS THAT EXISTING AND/OR IMPORTED TOPSOIL BE TESTED TO IDENTIFY SOIL DEFICIENCIES AND ANY SOIL AMENDMENTS NECESSARY TO ADDRESS THESE DEFICIENCIES. SOIL AMENDMENTS AND/OR FERTILIZERS SHOULD BE ADDED TO CORRECT TOPSOIL DEFICIENCIES BASED ON SOIL TESTING RESULTS.
- TOPSOIL SHALL BE PROTECTED DURING THE CONSTRUCTION PERIOD TO RETAIN ITS STRUCTURE, AVOID COMPACTION, AND TO PREVENT EROSION AND CONTAMINATION. STRIPPED TOPSOIL MUST BE STORED IN AN AREA AWAY FROM MACHINERY AND CONSTRUCTION OPERATIONS, AND CARE MUST BE TAKEN TO PROTECT THE TOPSOIL AS A VALUABLE COMMODITY. TOPSOIL MUST NOT BE STRIPPED DURING UNDESIRABLE WORKING CONDITIONS (E.G. DURING WET WEATHER OR WHEN SOILS ARE SATURATED). TOPSOIL SHALL NOT BE STORED IN SWALES OR IN AREAS WITH POOR DRAINAGE.

SEEDING

- ALLOWABLE SEED MIXES ARE INCLUDED IN THE CITY OF COLORADO SPRINGS STORMWATER CONSTRUCTION MANUAL. ALTERNATIVE SEED MIXES ARE ACCEPTABLE IF INCLUDED IN AN APPROVED LANDSCAPING PLAN.
- SEED SHOULD BE DRILL-SEEDED WHENEVER POSSIBLE.
 - SEED DEPTH MUST BE $\frac{3}{8}$ TO $\frac{1}{2}$ INCHES WHEN DRILL-SEEDING IS USED.
 - BROADCAST SEEDING OR HYDRO-SEEDING WITH TACKIFIER MAY BE SUBSTITUTED ON SLOPES STEEPER THAN 3:1 OR ON OTHER AREAS NOT PRACTICAL TO DRILL SEED.
 - SEEDING RATES MUST BE DOUBLED FOR BROADCAST SEEDING OR INCREASED BY 50% IF USING A BRILLIANT DRILL OR HYDRO-SEEDING.
 - BROADCAST SEEDING MUST BE LIGHTLY HAND-RAKED INTO THE SOIL.

MULCHING

- MULCHING SHOULD BE COMPLETED AS SOON AS PRACTICABLE AFTER SEEDING, HOWEVER PLANTED AREAS MUST BE MULCHED NO LATER THAN 14 DAYS AFTER PLANTING.
- MULCHING REQUIREMENTS INCLUDE:
 - HAY OR STRAW MULCH
 - ONLY CERTIFIED WEED-FREE AND CERTIFIED SEED-FREE MULCH MAY BE USED. MULCH MUST BE APPLIED AT 2 TONS/ACRE AND ADEQUATELY SECURED BY CRIMPING AND/OR TACKIFIER.
 - CRIMPING MUST NOT BE USED ON SLOPES GREATER THAN 3:1 AND MULCH FIBERS MUST BE TUCKED INTO THE SOIL TO A DEPTH OF 3 TO 4 INCHES.
 - TACKIFIER MUST BE USED IN PLACE OF CRIMPING ON SLOPES STEEPER THAN 3:1.
 - HYDRAULIC MULCHING
 - HYDRAULIC MULCHING IS AN OPTION ON STEEP SLOPES OR WHERE ACCESS IS LIMITED.
 - IF HYDRO-SEEDING IS USED, MULCHING MUST BE APPLIED AS A SEPARATE, SECOND OPERATION.
 - WOOD CELLULOSE FIBERS MIXED WITH WATER MUST BE APPLIED AT A RATE OF 2,000 TO 2,500 POUNDS/ACRE, AND TACKIFIER MUST BE APPLIED AT A RATE OF 100 POUNDS/ACRE.
 - EROSION CONTROL BLANKET
 - EROSION CONTROL BLANKET MAY BE USED IN PLACE OF TRADITIONAL MULCHING METHODS.

SEEDING & MULCHING

APPROVED: [Signature]

CREATED: 10/7/19

REVISED: 8/19/2020

DRAWING NO. 900-5M

Table 5-1. El Paso County Conservation District All-Purpose Mix for Upland, Transition and Permanent Control Measure Areas

Common Name	Scientific Name	Growth Season / Form	% of Mix	Pounds PLS		
				Irrigated broadcast Irrigated hydroseeded	Non-irrigated broadcast Non-irrigated hydroseeded Irrigated drilled	Non-irrigated drilled
Bluestem, big	<i>Andropogon gerardii</i>	Warm, sod	20	4.4	2.2	1.1
Grama, blue	<i>Bouteloua gracilis</i>	Warm, bunch	10	0.5	0.25	0.13
Green needlegrass ²	<i>Nassella viridula</i>	Cool, bunch	10	2	1	0.5
Wheatgrass, western ²	<i>Pascopyrum smithii</i>	Cool, sod	20	6.4	3.2	1.6
Grama, sideoats	<i>Bouteloua curtipendula</i>	Warm, bunch	10	2	1	0.5
Switchgrass ²	<i>Panicum virgatum</i>	Warm, bunch/sod	10	0.8	0.4	0.2
Prairie sandreed	<i>Calamovilfa longifolia</i>	Warm, sod	10	1.2	0.6	0.3
Yellow indiagrass ²	<i>Sorghastrum nutans</i>	Warm, sod	10	2	1	0.5
Seed rate (lbs PLS/acre)				19.3	9.7	4.8

¹For portions of facilities located near or on the bottom or where wet soil conditions occur. Planting of potted nursery stock wetland plants 2-foot on-center is recommended for sites with wetland hydrology.

²Species that will do well in the bottom of pond areas.

Stabilized Staging Area (SSA) SM-6

SSA-1. STABILIZED STAGING AREA

STABILIZED STAGING AREA INSTALLATION NOTES

- SEE PLAN VIEW FOR
 - LOCATION OF STAGING AREA(S).
 - CONTRACTOR MAY ADJUST LOCATION AND SIZE OF STAGING AREA WITH APPROVAL FROM THE LOCAL JURISDICTION.
- STABILIZED STAGING AREA SHOULD BE APPROPRIATE FOR THE NEEDS OF THE SITE. OVERSIZING RESULTS IN A LARGER AREA TO STABILIZE FOLLOWING CONSTRUCTION.
- STAGING AREA SHALL BE STABILIZED PRIOR TO OTHER OPERATIONS ON THE SITE.
- THE STABILIZED STAGING AREA SHALL CONSIST OF A MINIMUM 3" THICK GRANULAR MATERIAL.
- UNLESS OTHERWISE SPECIFIED BY LOCAL JURISDICTION, ROCK SHALL CONSIST OF DOT SECT. #703, AASHTO #3 COARSE AGGREGATE OR 6" (MINUS) ROCK.
- ADDITIONAL PERIMETER BMPs MAY BE REQUIRED INCLUDING BUT NOT LIMITED TO SILT FENCE AND CONSTRUCTION FENCING.

STABILIZED STAGING AREA MAINTENANCE NOTES

- INSPECT BMPs EACH WORKDAY, AND MAINTAIN THEM IN EFFECTIVE OPERATING CONDITION. MAINTENANCE OF BMPs SHOULD BE PROACTIVE, NOT REACTIVE. INSPECT BMPs AS SOON AS POSSIBLE (AND ALWAYS WITHIN 24 HOURS) FOLLOWING A STORM THAT CAUSES SURFACE EROSION, AND PERFORM NECESSARY MAINTENANCE.
- FREQUENT OBSERVATIONS AND MAINTENANCE ARE NECESSARY TO MAINTAIN BMPs IN EFFECTIVE OPERATING CONDITION. INSPECTIONS AND CORRECTIVE MEASURES SHOULD BE DOCUMENTED THOROUGHLY.
- WHERE BMPs HAVE FAILED, REPAIR OR REPLACEMENT SHOULD BE INITIATED UPON DISCOVERY OF THE FAILURE.
- ROCK SHALL BE REAPPLIED OR REGRADED AS NECESSARY IF RUTTING OCCURS OR UNDERLYING SUBGRADE BECOMES EXPOSED.

STABILIZED STAGING AREA MAINTENANCE NOTES

- STABILIZED STAGING AREA SHALL BE ENLARGED IF NECESSARY TO CONTAIN PARKING, STORAGE, AND UNLOADING/LOADING OPERATIONS.
- THE STABILIZED STAGING AREA SHALL BE REMOVED AT THE END OF CONSTRUCTION. THE GRANULAR MATERIAL SHALL BE REMOVED OR, IF APPROVED BY THE LOCAL JURISDICTION, USED ON SITE, AND THE AREA COVERED WITH TOPSOIL, SEEDDED AND MULCHED OR OTHERWISE STABILIZED IN A MANNER APPROVED BY LOCAL JURISDICTION.

VEHICLE TRACKING CONTROL

APPROVED: [Signature]

CREATED: 10/7/19

REVISED: 8/19/2020

DRAWING NO. 900-VTC

AGGREGATE VEHICLE TRACKING CONTROL

SECTION A-A'

INSTALLATION NOTES

- A STABILIZED CONSTRUCTION ENTRANCE/EXIT SHOULD BE LOCATED AT ALL POINTS WHERE VEHICLES EXIT THE CONSTRUCTION SITE TO ADJACENT ROADWAY.
- STABILIZED CONSTRUCTION ENTRANCE/EXITS SHALL BE INSTALLED PRIOR TO ANY LAND DISTURBING ACTIVITIES.
- RADIUS MUST BE ADEQUATE FOR INTENDED CONSTRUCTION VEHICLE TURNING.
- ROCK SHOULD CONSIST OF 6" MINUS ROCK.
- INSTALL CONSTRUCTION FENCE ON BOTH SIDES OF VEHICLE TRACKING CONTROL PAD WHEN NEEDED OR REQUIRED BY INSPECTOR.

MAINTENANCE NOTES

- FREQUENT OBSERVATIONS AND MAINTENANCE ARE NECESSARY TO MAINTAIN CONTROL MEASURES IN EFFECTIVE OPERATING CONDITION. INSPECTIONS AND CORRECTIVE MEASURES SHOULD BE DOCUMENTED THOROUGHLY.
- SEDIMENT TRACKED ONTO THE ADJACENT ROAD SHALL BE REMOVED DAILY, BY SWEEPING OR SHOVELING, AND NEVER WASHED DOWN STORM DRAINS.
- ROUGHEN, REPLACE AND/OR ADD ROCK AS NEEDED TO MAINTAIN CONSISTENT DEPTH AND TO PREVENT SEDIMENT TRACKING ONTO ADJACENT STREET.
- PERMANENTLY STABILIZE AREA AFTER VEHICLE TRACKING CONTROL IS REMOVED.

VEHICLE TRACKING CONTROL

APPROVED: [Signature]

CREATED: 10/7/19

REVISED: 8/19/2020

DRAWING NO. 900-VTC

Earth Dikes and Drainage Swales (ED/DS) EC-10

ED-1. COMPACTED UNLINED EARTH DIKE FORMED BY BERM

DS-1. COMPACTED UNLINED EXCAVATED SWALE

DS-2. COMPACTED UNLINED SWALE FORMED BY CUT AND FILL

DS-3. ECB LINED SWALE (CUT AND FILL OR BERM)

ED/DS

DS-4. SYNTHETIC LINED SWALE

DS-5. RIPRAP LINED SWALE

EARTH DIKE AND DRAINAGE SWALE INSTALLATION NOTES

- SEE SITE PLAN FOR:
 - LOCATION OF DIVERSION SWALE
 - TYPE OF SWALE (UNLINED, COMPACTED AND/OR LINED)
 - LENGTH OF EACH SWALE
 - DEPTH, D, AND WIDTH, W DIMENSIONS.
 - FOR ECB/TRM LINED DITCH, SEE ECB DETAIL.
 - FOR RIPRAP LINED DITCH, SIZE OF RIPRAP, D50.
- SEE DRAINAGE PLANS FOR DETAILS OF PERMANENT CONVEYANCE FACILITIES AND/OR DIVERSION SWALES EXCEEDING 2-YEAR FLOW RATE OR 10 CFS.
- EARTH DIKES AND SWALES INDICATED ON SWMP PLAN SHALL BE INSTALLED PRIOR TO LAND-DISTURBING ACTIVITIES IN PROXIMITY.
- EMBANKMENT IS TO BE COMPACTED TO 90% OF MAXIMUM DENSITY AND WITHIN 2% OF OPTIMUM MOISTURE CONTENT ACCORDING TO ASTM D698.
- SWALES ARE TO DRAIN TO A SEDIMENT CONTROL BMP.
- FOR LINED DITCHES, INSTALLATION OF ECB/TRM SHALL CONFORM TO THE REQUIREMENTS OF THE ECB DETAIL.
- WHEN CONSTRUCTION TRAFFIC MUST CROSS A DIVERSION SWALE, INSTALL A TEMPORARY CULVERT WITH A MINIMUM DIAMETER OF 12 INCHES.

EARTH DIKE AND DRAINAGE SWALE MAINTENANCE NOTES

- INSPECT BMPs EACH WORKDAY, AND MAINTAIN THEM IN EFFECTIVE OPERATING CONDITION. MAINTENANCE OF BMPs SHOULD BE PROACTIVE, NOT REACTIVE. INSPECT BMPs AS SOON AS POSSIBLE (AND ALWAYS WITHIN 24 HOURS) FOLLOWING A STORM THAT CAUSES SURFACE EROSION, AND PERFORM NECESSARY MAINTENANCE.
- FREQUENT OBSERVATIONS AND MAINTENANCE ARE NECESSARY TO MAINTAIN BMPs IN EFFECTIVE OPERATING CONDITION. INSPECTIONS AND CORRECTIVE MEASURES SHOULD BE DOCUMENTED THOROUGHLY.
- WHERE BMPs HAVE FAILED, REPAIR OR REPLACEMENT SHOULD BE INITIATED UPON DISCOVERY OF THE FAILURE.
- SWALES SHALL REMAIN IN PLACE UNTIL THE END OF CONSTRUCTION; IF APPROVED BY LOCAL JURISDICTION, SWALES MAY BE LEFT IN PLACE.
- WHEN A SWALE IS REMOVED, THE DISTURBED AREA SHALL BE COVERED WITH TOPSOIL, SEEDDED AND MULCHED OR OTHERWISE STABILIZED IN A MANNER APPROVED BY LOCAL JURISDICTION.

GENERAL NOTES:

REVISIONS:

NO.	DATE	INITIALS	NOTES
1			
2			
3			
4			
5			
6			
7			
8			

PROFESSIONAL SEAL:

Kiowa Engineering Corporation
 7175 West Jefferson Avenue, Suite 2500
 Lakewood, CO 80401
 (303) 692-0366

AMERCO REAL ESTATE COMPANY

CONSTRUCTION DEPARTMENT
 2727 NORTH CENTRAL AVENUE
 PHOENIX, ARIZONA 85004
 P: (602) 263-6502
 F: (602) 277-1026

SITE ADDRESS:
 U-HAUL at Falcon
 Rolling Thunder Way
 Falcon, CO 80831

SHEET CONTENTS:
 GRADING AND EC PLAN
 - DETAIL SHT

866077

DRAWN: JRD	C317
CHECKED: MWE	
DATE: 8/26/22	

© COPYRIGHT - AMERCO REAL ESTATE COMPANY